

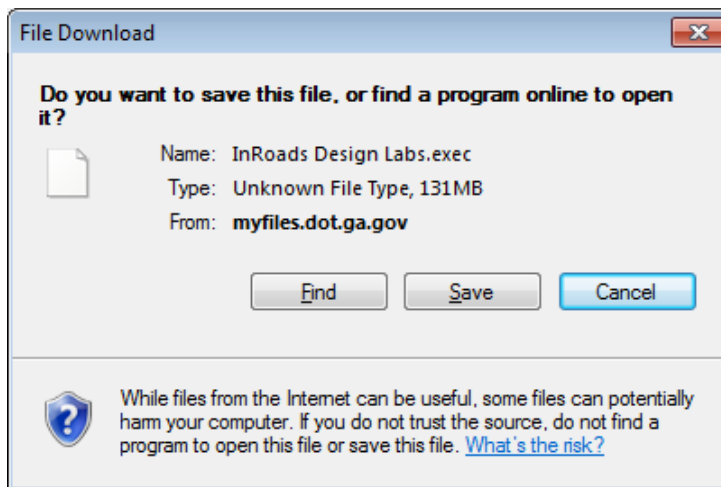
Design Labs Dataset

Before You Begin Instructions

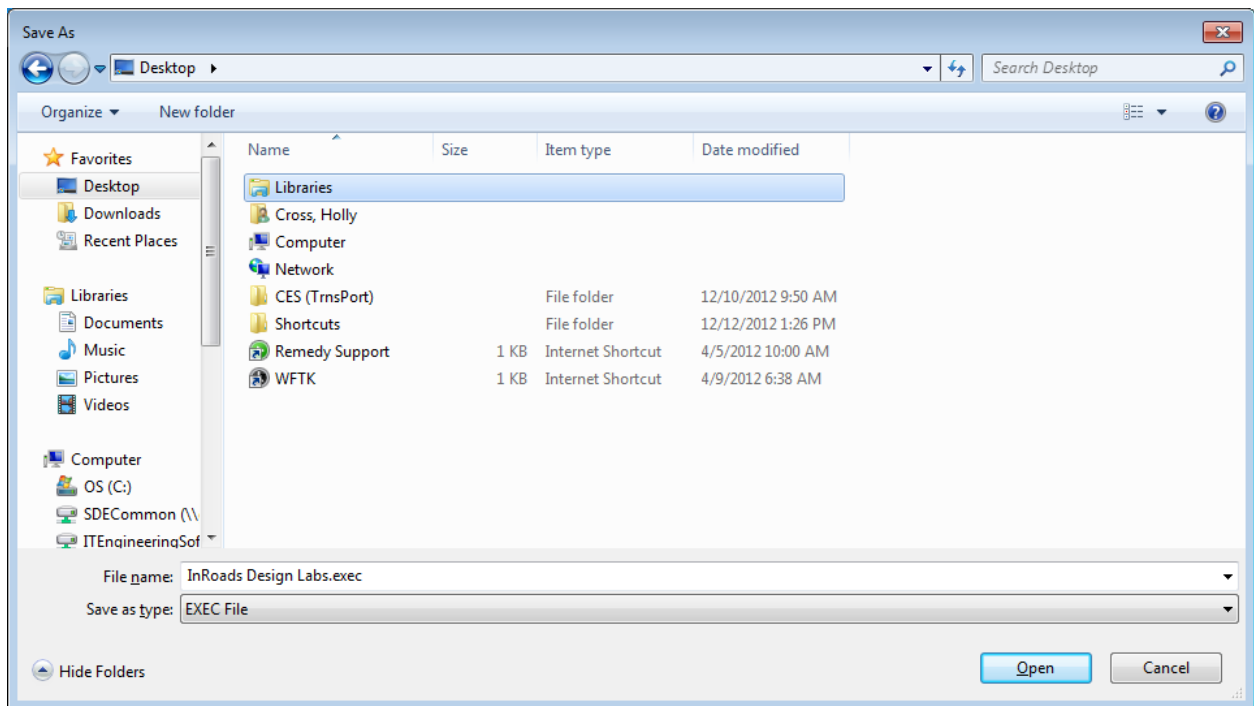
Program Information:

The following document details the steps required to load the InRoads Design Labs Dataset to your computer.

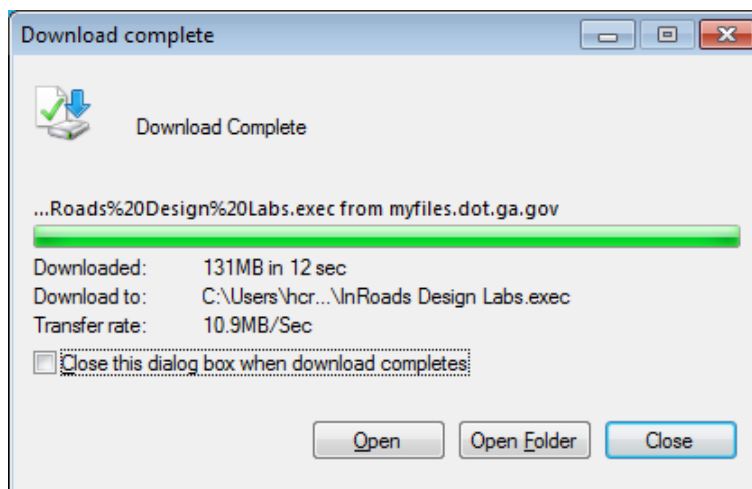
1. Double Click the **InRoads Design Labs Dataset** link and a **File Download** dialog box will appear:



2. Click the **Save** button to save the Executable to your hard drive. (Please be patient. It may take a minute for the download to begin).
3. A **Save As** dialog box will appear.

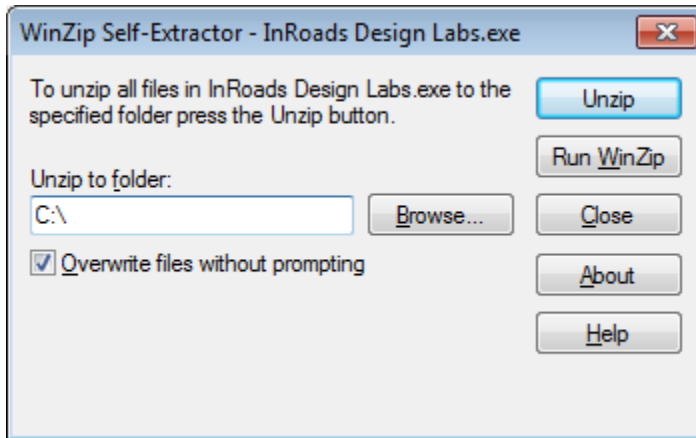


4. Browse to a location on your hard drive such as the Desktop or Downloads folder and click the **Save** button.
5. A **Download complete** dialog box will appear:

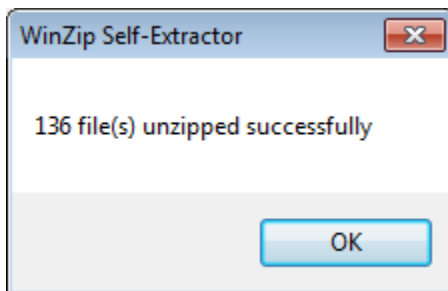


6. Click the **Close** button.

- Browse to the location where you saved the '**InRoads Design Labs.exe**' Executable. After downloading the **InRoads Design Labs.exe** to your computer – the file named '**InRoads Design Labs.exe** must be renamed to remove the 'c' in the .**exec** extension. The 'c' extension is added merely as a work around in order to make the files available on SharePoint which does not allow .**exe** files.
- Double click the **InRoads Design Labs.exe** file and a **WinZip Self Extractor** dialog box appears:



- Accept the default install location. Then click the **Unzip** button and the following message will appear informing you that 136 file(s) were unzipped successfully:



- Click **OK**
- Then click **Close** to close out of the **WinZip Self Extractor** dialog box.
- This will load the **Design Labs Dataset** into the proper folder on the hard drive. These Design Labs Dataset files will be used in association with the **Introduction to InRoads_Design.PDF** (Training Material). The Training Material will inform the user of the requisite steps to utilize the Design Labs Dataset.