



2025 State Rail Plan Public Meeting

January 14, 2025

5:00 PM



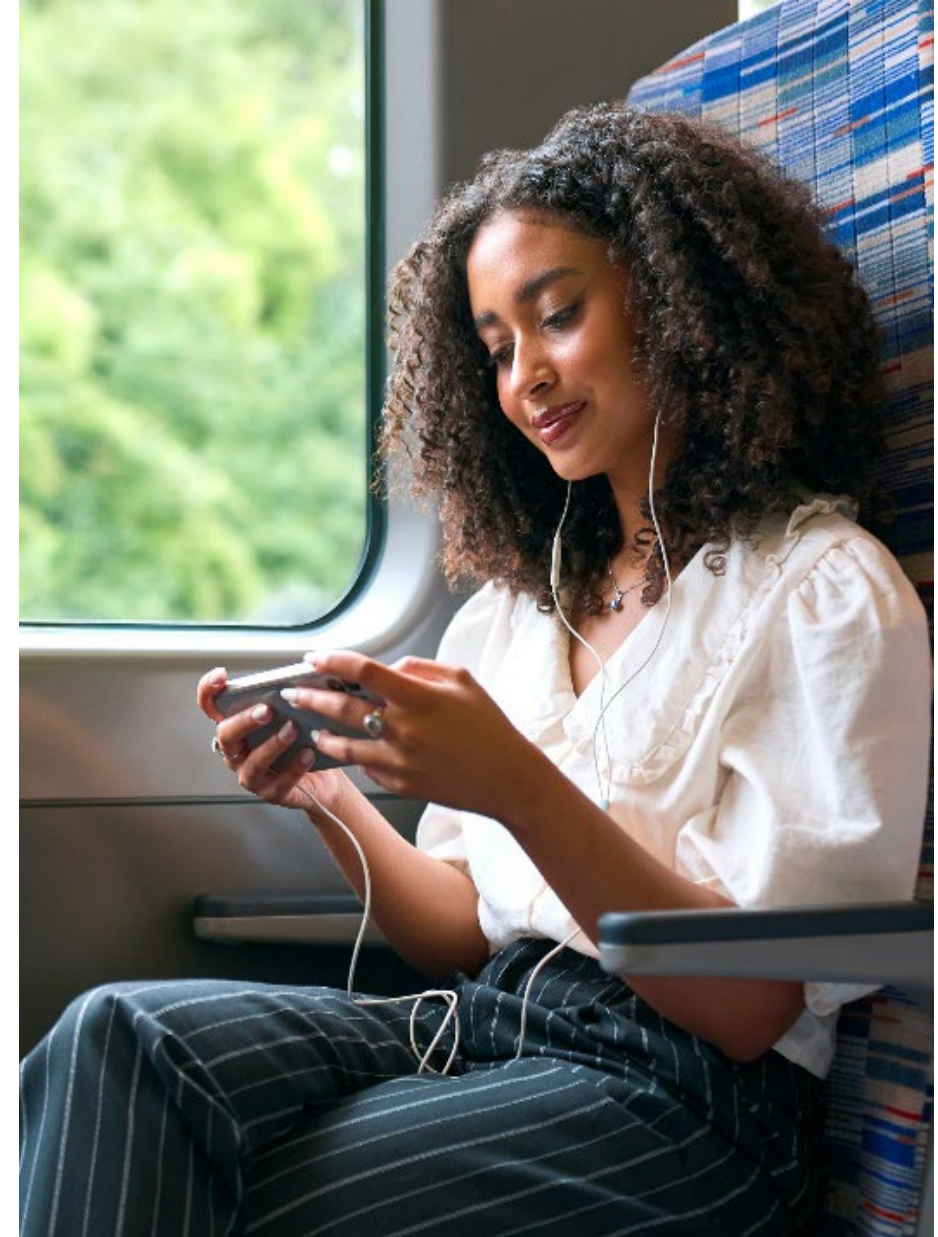
Georgia's Multimodal Transportation System Vision and Goals

The Mission

Deliver a transportation system focused on innovation, safety, sustainability, and mobility.

The Vision

Boost Georgia's competitiveness via leadership in transportation.



STATE RAIL PLAN **VISION**

A SAFE, EFFICIENT, AND RELIABLE STATE RAIL SYSTEM THAT EXPANDS ACCESS AND MOBILITY FOR PEOPLE AND GOODS TO SUSTAIN AND STRENGTHEN GEORGIA'S ECONOMIC COMPETITIVENESS

STATE RAIL PLAN **GOALS & OBJECTIVES**



Enhance rail system
SAFETY and **SECURITY**



Maintain and improve rail
assets to **ENHANCE RELIABILITY**



Support an **IMPROVED**
and **EXPANDED**
PASSENGER RAIL SYSTEM



Promote rail as an **ENERGY**
and **ENVIRONMENTALLY**
SUSTAINABLE CHOICE



Upgrade and expand
CONNECTIVITY and
ACCESS to rail for people
and goods



Further Georgia's **ECONOMIC**
DEVELOPMENT and
COMPETITIVENESS through the
STATEWIDE REACH of **RAIL**

Freight Rail



Class I Railroads

- Provide long distance freight services and serve as the backbone to North America's rail network
- Operate major yards, serve ports, and connect directly to major industries
- 6 Class I railroads in North America, 2 operate in Georgia

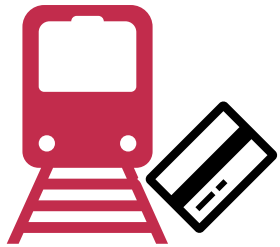


Short Line Railroads

- Provide 'first-mile, last-mile' connectivity to the rail system
- Connect smaller industries with lesser service needs to the Class I network
- Support economic development in rural Georgia
- 28 Short Lines in Georgia



Passenger Rail Services



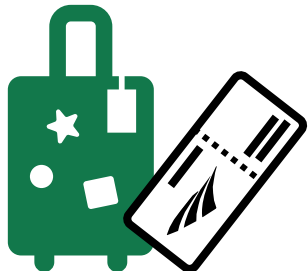
Rail Transit

- All-day frequent service
- Serves the densest urban areas
- Service based on headways (time between repeated trains)
- Most stations, closest together
- Regulated and funded by the FTA



Commuter Rail

- Serves a major metro region
- Provides daily access for workers between suburbs and the city center during peak commute times
- Many stations, close together
- Regulated and funded by the FTA



Long Distance Passenger/ Intercity Passenger Rail

- Serves long distance trips and connects multiple major cities
- Stations are spaced further apart to preserve higher speeds and faster travel times
- Regulated by the FRA



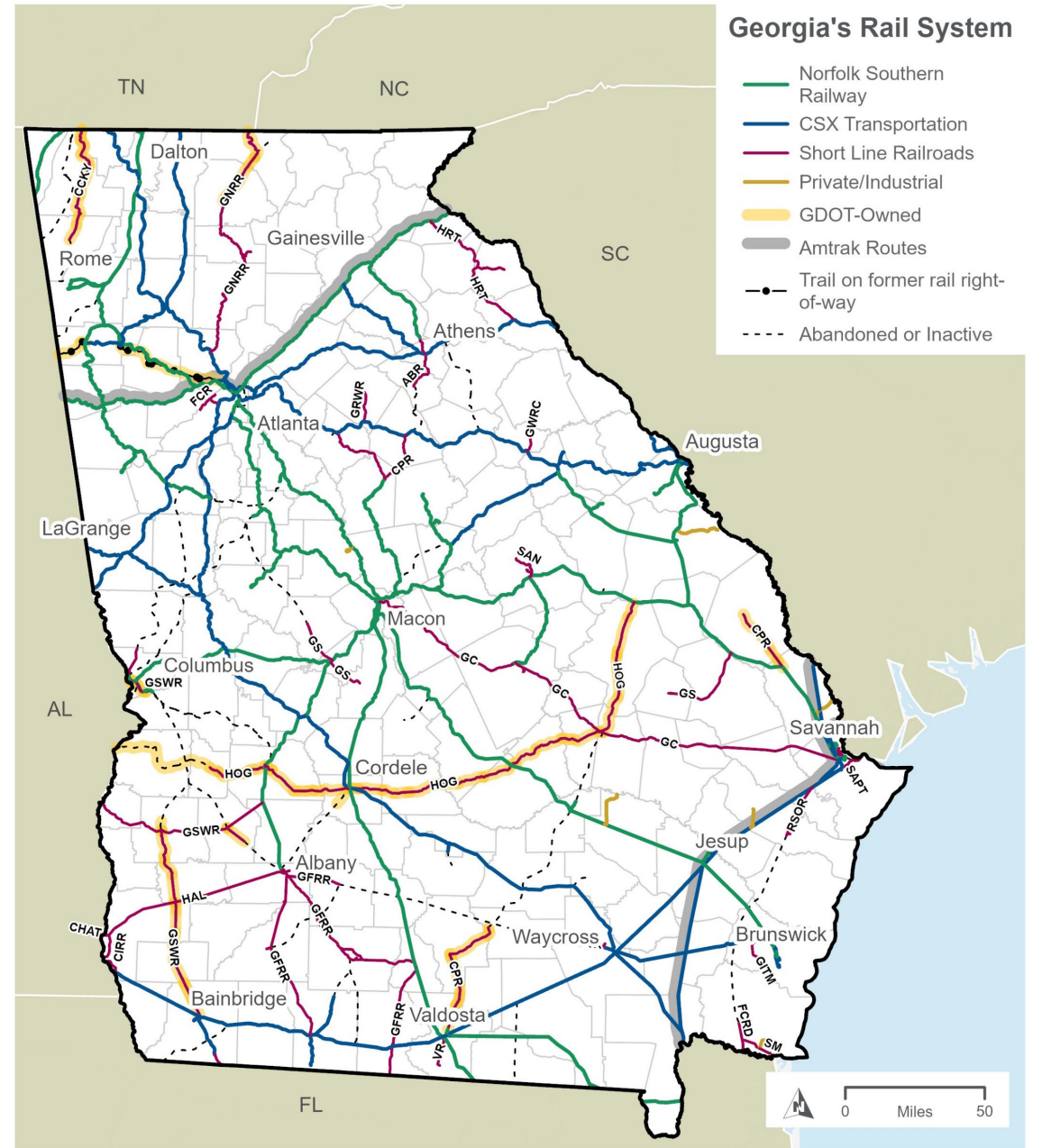


Plan Overview

The Role of Rail in Statewide Transportation

Georgia is home to the most extensive rail network and the largest intermodal hub of any state in the Southeast.

- **2** Class I Freight Railroads operating **3,288** route miles
- **28** Class III short operating **1,012** route miles
- **4** daily Amtrak routes serving **5** intercity rail stations



Definitions

SRP: State Rail Plan

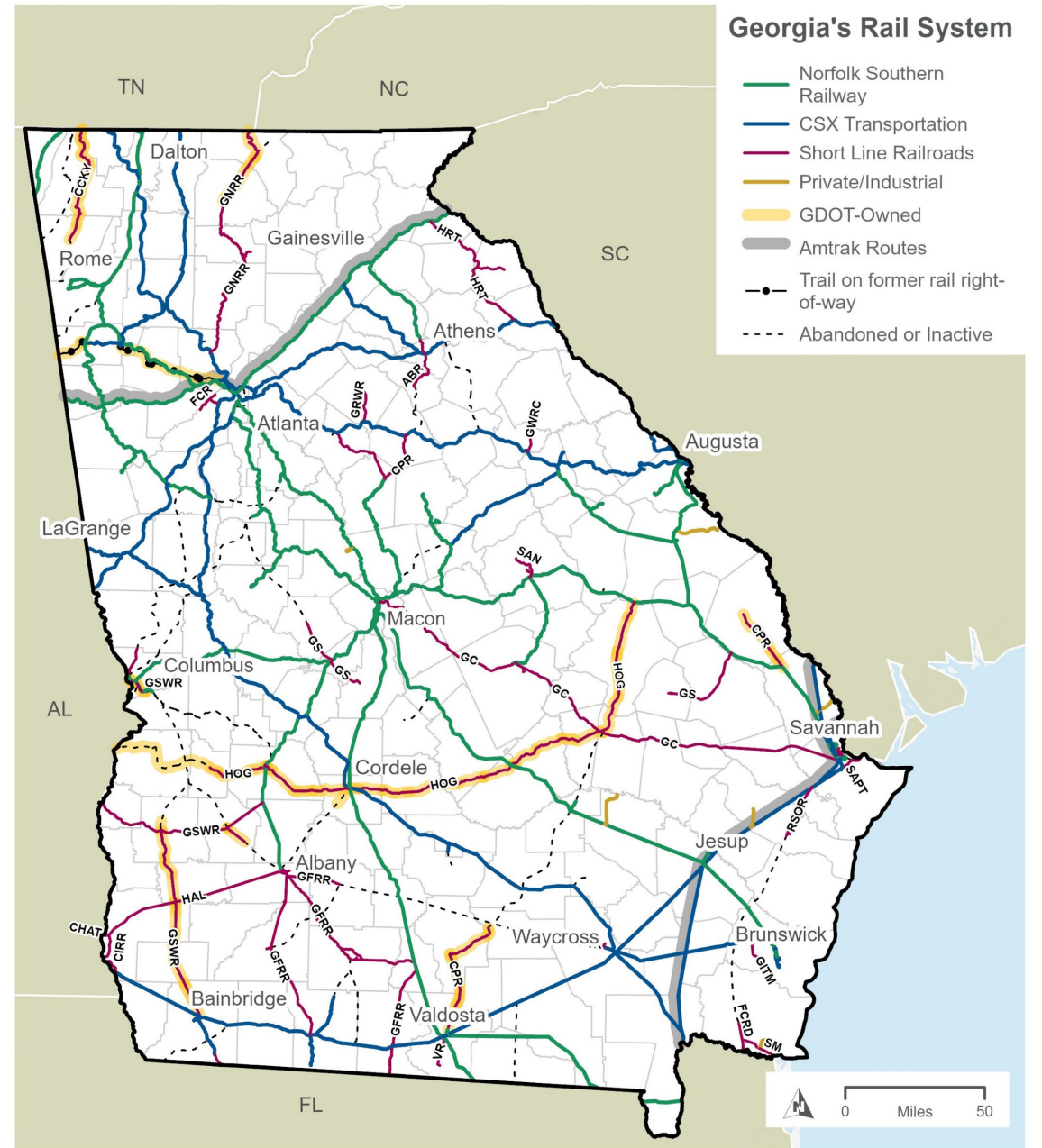
FRA: Federal Railroad Administration

Class I/Class III/Short Line: Different “sizes” of freight railroads

Intermodal: The transportation of freight in an intermodal container or vehicle, using multiple modes of transportation

Intercity/Commuter Rail: Designations for different types of passenger rail systems

Amtrak: National Railroad Passenger Corporation, a national operator of intercity passenger rail routes



State Rail Plan Strategies

1

Inform and discuss future rail priorities with stakeholders and the public.

2

Evaluate the state's rail infrastructure requirements and identify potential projects for rail system enhancements.

3

Provide clear communication to the public and policymakers about the advantages of rail and its integral role in Georgia's overall transportation framework.

4

Gain insight into the challenges and needs of the rail industry to better address them.

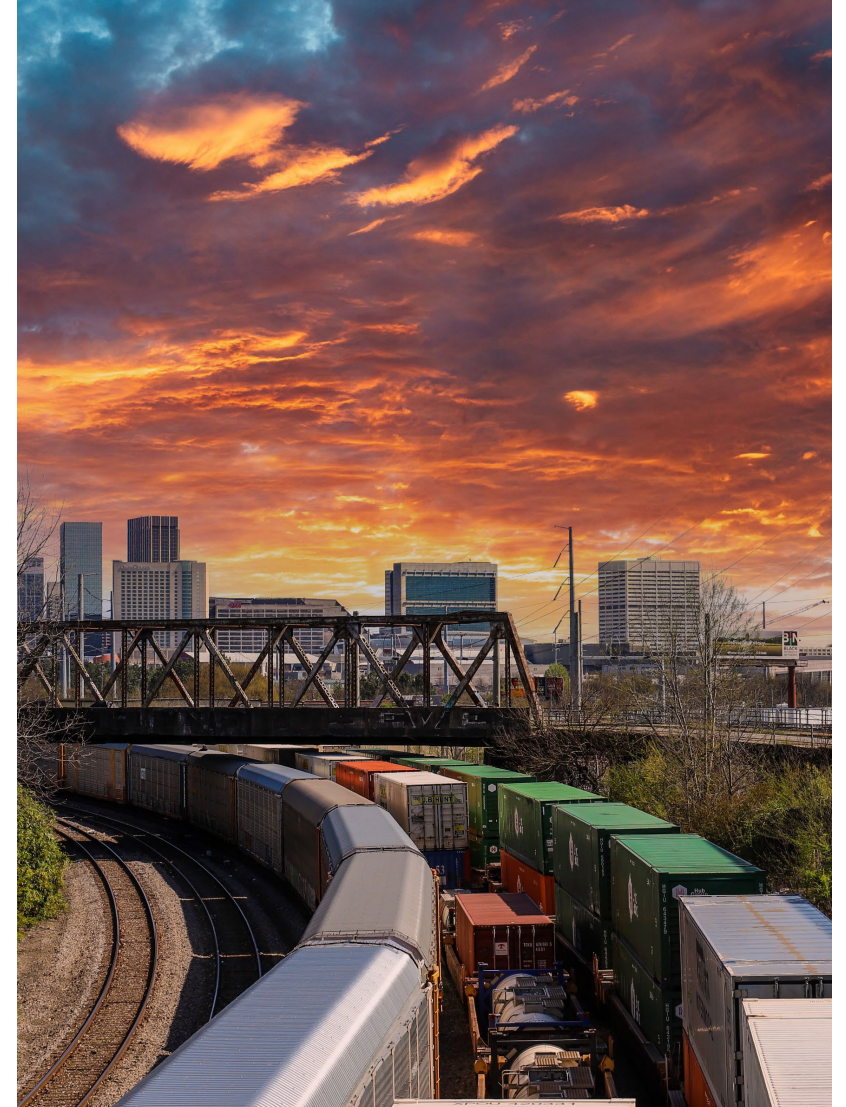


Key Findings & Updates

Railroad Interviews: What We've Heard

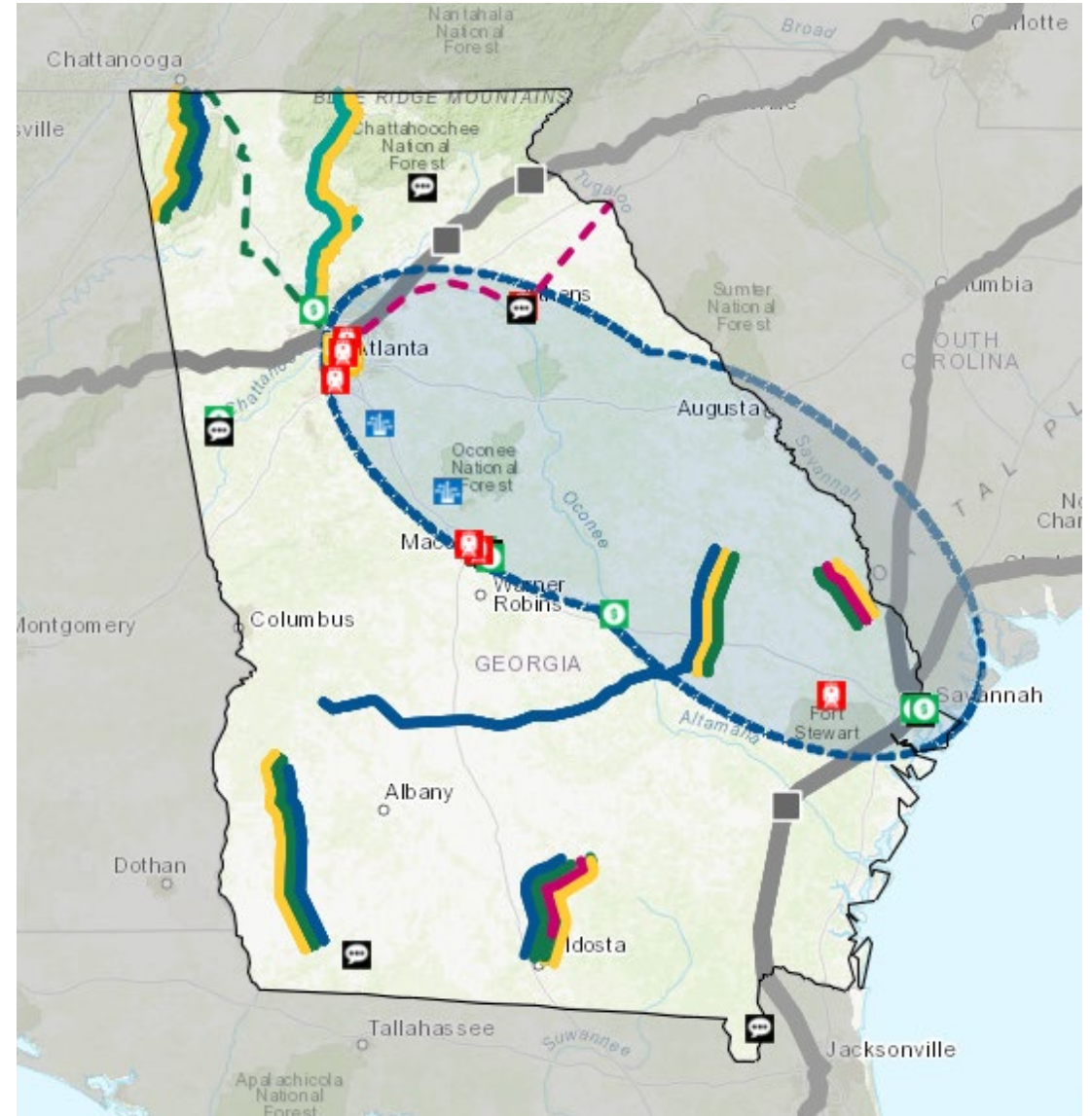
Key Takeaways:

- **Freight Growth**
Freight rail continues to grow and support the movement of goods within the State and across the Southeast.
- **Port Growth**
Georgia Ports Authority's growth has direct correlation to the increase in intermodal and other commodities.
- **Short Lines**
Short Lines continue to look for funding through State and Federal programs to support capital costs for upgrades and major infrastructure improvements.
- **Local Shipping Needs**
Shippers across the state are seeking a reliable mode of transportation of goods to compete with trucking and provide a commercial alternative to normalize costs.



Stakeholder Feedback: What We've Heard

- **Existing Bottlenecks**
 - Rebuild Howell Wye
- **Economic Development Opportunities**
 - Expand Blue Ridge Scenic Railroad to Atlanta for tourism
 - Relocate Savannah Station closer to downtown for improved passenger access
 - Focus on more substantive freight rail improvements beyond short lines
- **Other Feedback**
 - Enhance rail access for tribal grounds
 - Monitor U.S. DOJ vs. NS case on Amtrak delays for potential impacts on passenger service plans.
 - Integrate passenger rail with federal emergency response, especially for evacuation trains.

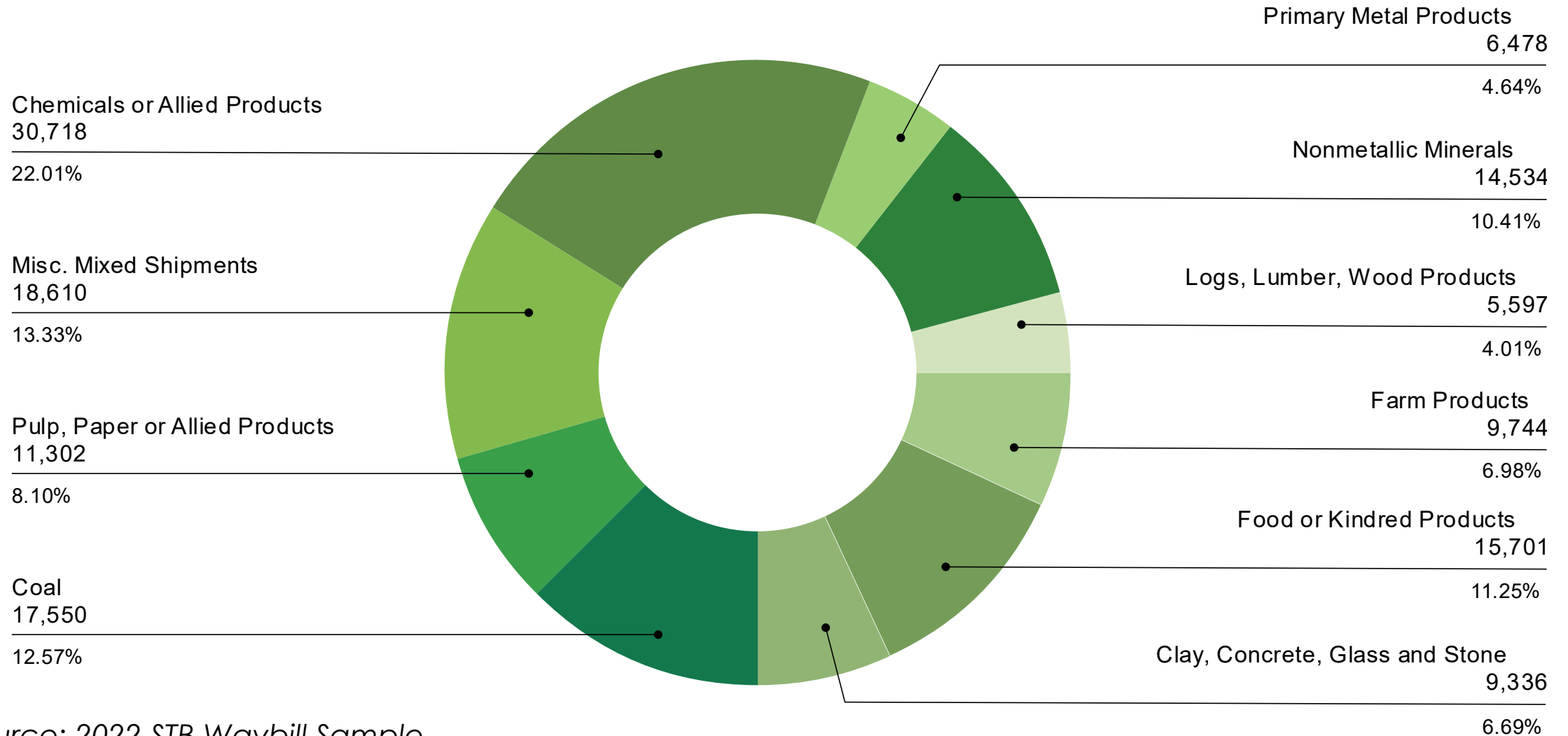


The image features a perspective view of railroad tracks receding into the distance under a clear blue sky. Overhead power lines and support structures are visible. A blurred train is moving from right to left in the background. A large white geometric shape, resembling a stylized arrow or a corner cut, is positioned on the right side of the image. The text "Freight Rail" is centered over the tracks.

Freight Rail

Freight Rail in Georgia By the Numbers

Top Rail Commodities by Tonnage (2022)



Source: 2022 STB Waybill Sample

Freight Rail in Georgia By the Numbers

3,300 Direct Jobs

Direct employment in freight rail transportation.

9,000 Additional Jobs

Includes **4,400 indirect jobs** and **4,600 induced jobs** in related industries supported by rail operations spending.

12,400 Total Jobs

Overall employment connected to freight rail services statewide.

Employment Impacts



ELECTRICAL
EQUIPMENT



FOREST
PRODUCTS



MACHINERY



PULP, PAPER OR
ALLIED PRODUCTS



TRANSPORTATION
EQUIPMENT

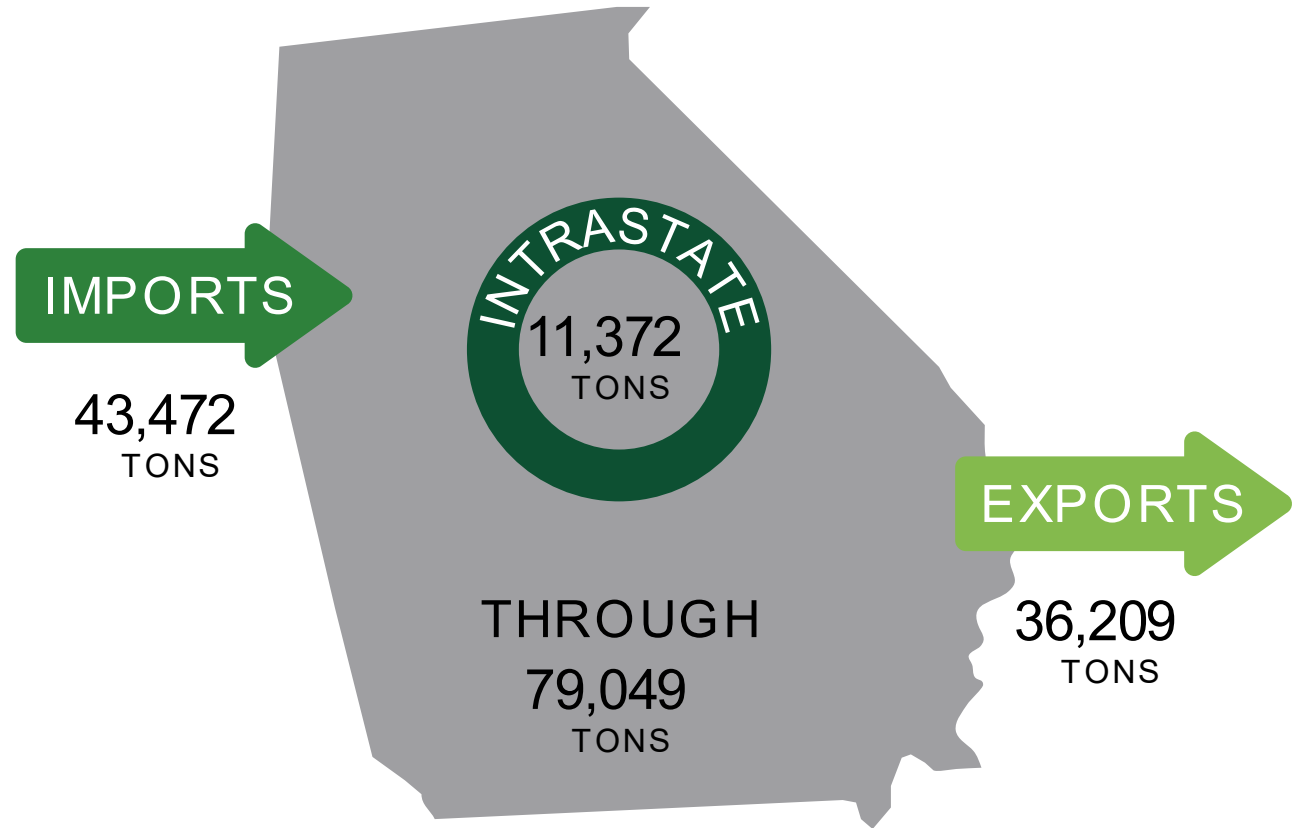
Freight Rail in Georgia by the Numbers

APPROXIMATELY

**46% OF COMMODITY
FLOWS (TONNAGE)**

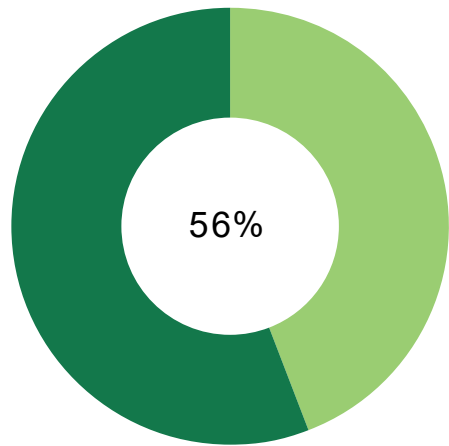
pass through Georgia as through movements.

Imports (26%) and exports (21%) are roughly equivalent to total through freight movements.

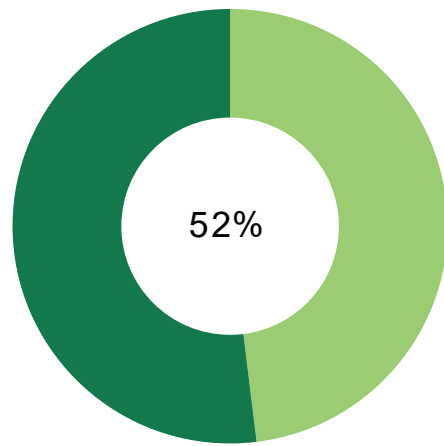


Freight Rail in Georgia by the Numbers

Inbound and Outbound Intermodal Freight Movements, 2022



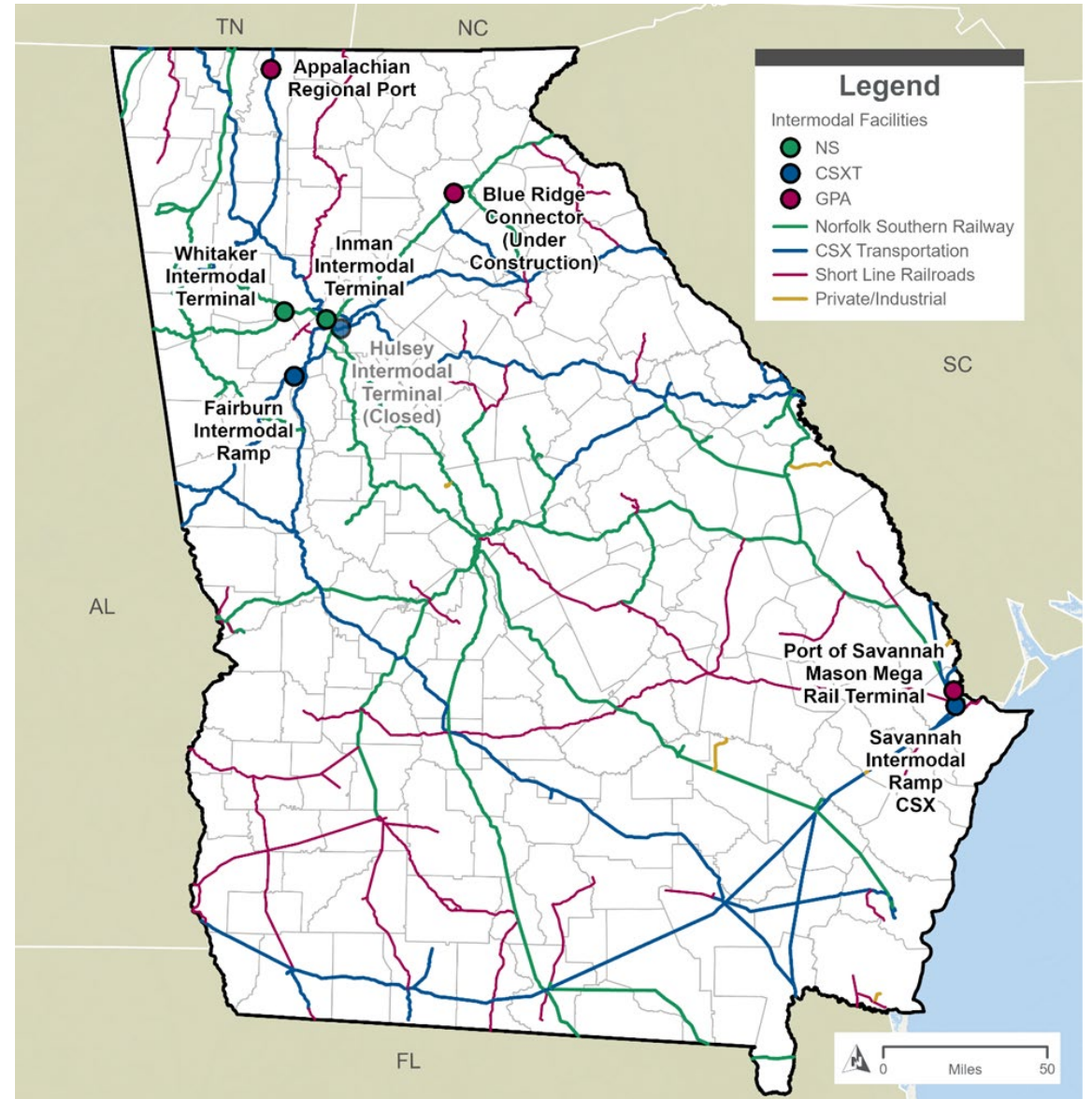
Inbound Volume



Outbound Volume

Intermodal
 All Other Freight

Source: 2022 STB Waybill Sample



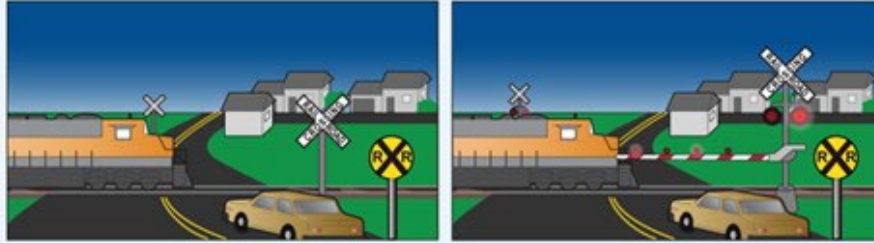
Section 130 Railroad Safety Program

Before improvements

After improvements

Active Equipment Installations/Upgrades

Includes projects that add new devices or upgrade existing ones, such as flashing lights and automatic gates. These devices give advance notice of an approaching train after the train passes over a circuit in the track.



Approach Improvements

Includes projects that add or upgrade existing traffic separation devices, such as medians that restrict driver access to the opposing lanes. Also eligible are traffic signals, guardrails, pedestrian or bicycle path improvements, and illumination.



Eliminations

Includes projects that eliminate grade crossings through closure, relocation, or the construction of a grade separation structure, such as a bridge, that separates trains from vehicle traffic.



Project Type	Total Cost	Projects
Consolidation	\$3.96M	14
Lighting	\$155K	2
Preliminary Engineering	\$400K	1
Rehab / Reconstruction	\$11.72M	28
Scoping	\$1.7M	3
Signing & Marking	\$6.52M	12
Warning Devices	\$21.43M	43
Total	\$41.92M	103

Fiscal Year 25-50

Georgia Freight Rail Program

O.C.G.A 32-2-41.3

“The **Georgia Freight Railroad Program**” was established “in order to enhance the state’s investment in freight rail projects for the public benefit and to support a safe and balanced transportation system for the state” and “shall be administered, subject to appropriations, in order to enhance the state's investment in freight rail projects for **public benefit** and to support a safe and balanced transportation system for the state.”

Freight Rail Short-Term Investment Program

120 Projects
\$168.26M

35

State-Owned
Railroad Projects
\$73.6M

4

Privately-Owned
Railroad Projects
\$57M

81

Crossing
Projects
\$37.66M

* 2025-2028

This slide has been updated to represent the timeline of the short-term investment program (FY25-28) in the 2025 Georgia Rail Plan update.

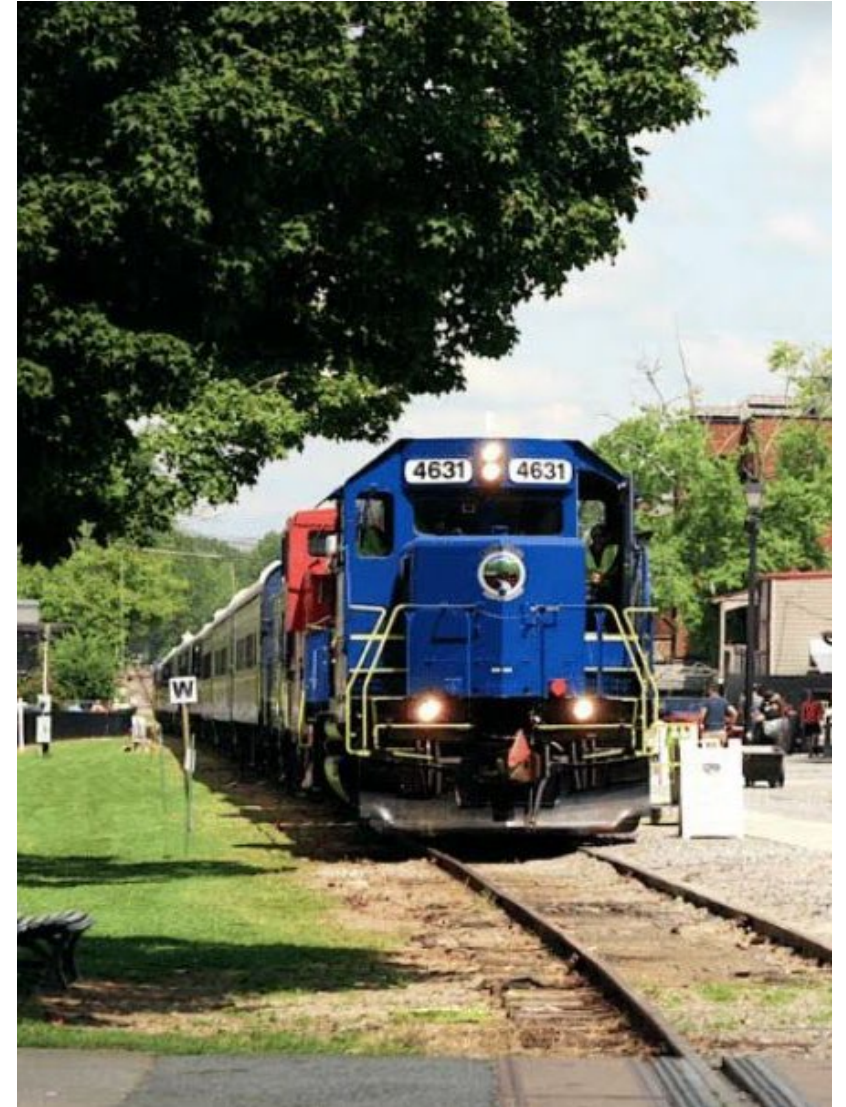
A blue passenger train is shown from a high-angle perspective, moving along a track that curves through a lush, green forest. The train's front is prominent, showing its headlights and windshield. The surrounding area is filled with dense trees and greenery, creating a serene and natural setting. The entire image has a blue color cast, and a white geometric shape is visible on the right side.

Passenger Rail

Passenger Rail in Georgia

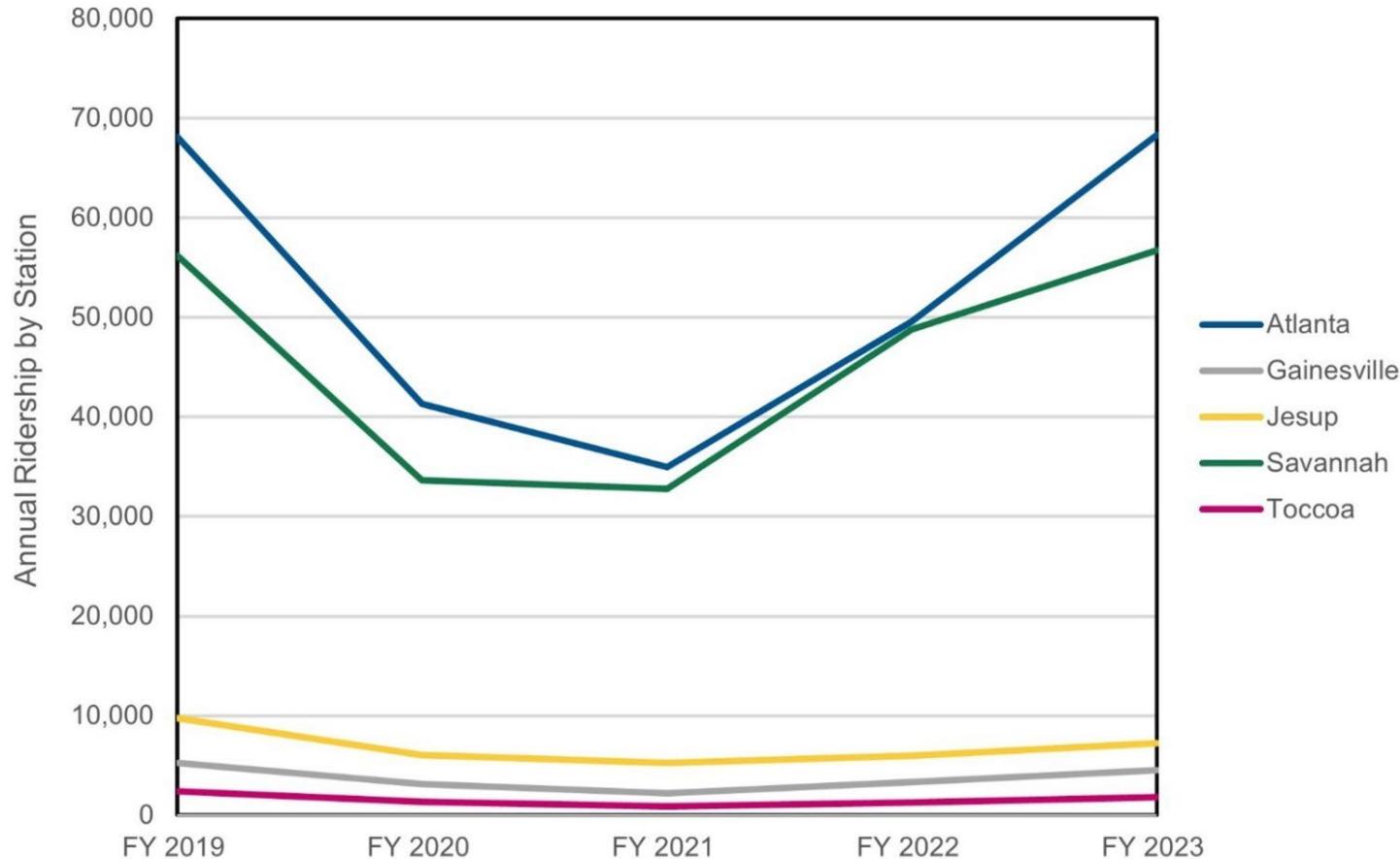
GDOT's Division of Intermodal continues to explore opportunities to expand and enhance Georgia's passenger rail services as part of our efforts to establish Georgia as a transportation leader.

- Conducts comprehensive studies for potential passenger rail projects.
- Engages community members in discussions relating to the future of passenger rail.
- Collaborates with stakeholders to assess the benefits, feasibility, and funding challenges for passenger rail.



Passenger Rail in Georgia by the Numbers

Amtrak Annual Ridership by Station in Georgia



Atlanta and Savannah station ridership returned to pre-COVID level in 2023

Top 10 Station Pairs for Amtrak Crescent Include 5 in Georgia

- Atlanta – New York, NY
- Atlanta – Washington, D.C.
- Atlanta – New Orleans, LA
- Atlanta – Greensboro, NC
- Atlanta – Charlotte, NC

Top 10 Station Pairs for Amtrak Palmetto Includes 1 in Georgia

- Savannah – Charleston, SC

Passenger Rail Needs/Opportunities

Population, Employment, and Traffic Growth

Metro Atlanta

- Metro Atlanta will add 2.4 million more people from 2020 to 2050 – 39% growth
- Employment expected to grow 23%
- Vehicle-miles expected to grow 30%

Emerging Metropolitan Areas

- 13 regions across the state
- Over 20% of Georgia's population and employment
- Counties near Savannah and Augusta grew more than 23%, 2010-2019

Rural Areas

- 20% of Georgia's population
- 33% of Georgia residents 65 and older
- 25% of all vehicle-miles



Atlanta to Savannah Passenger Rail Study: Coordination with Other Corridor ID and Long-Distance Projects

Atlanta serves as a Terminus for three Corridor ID Projects:

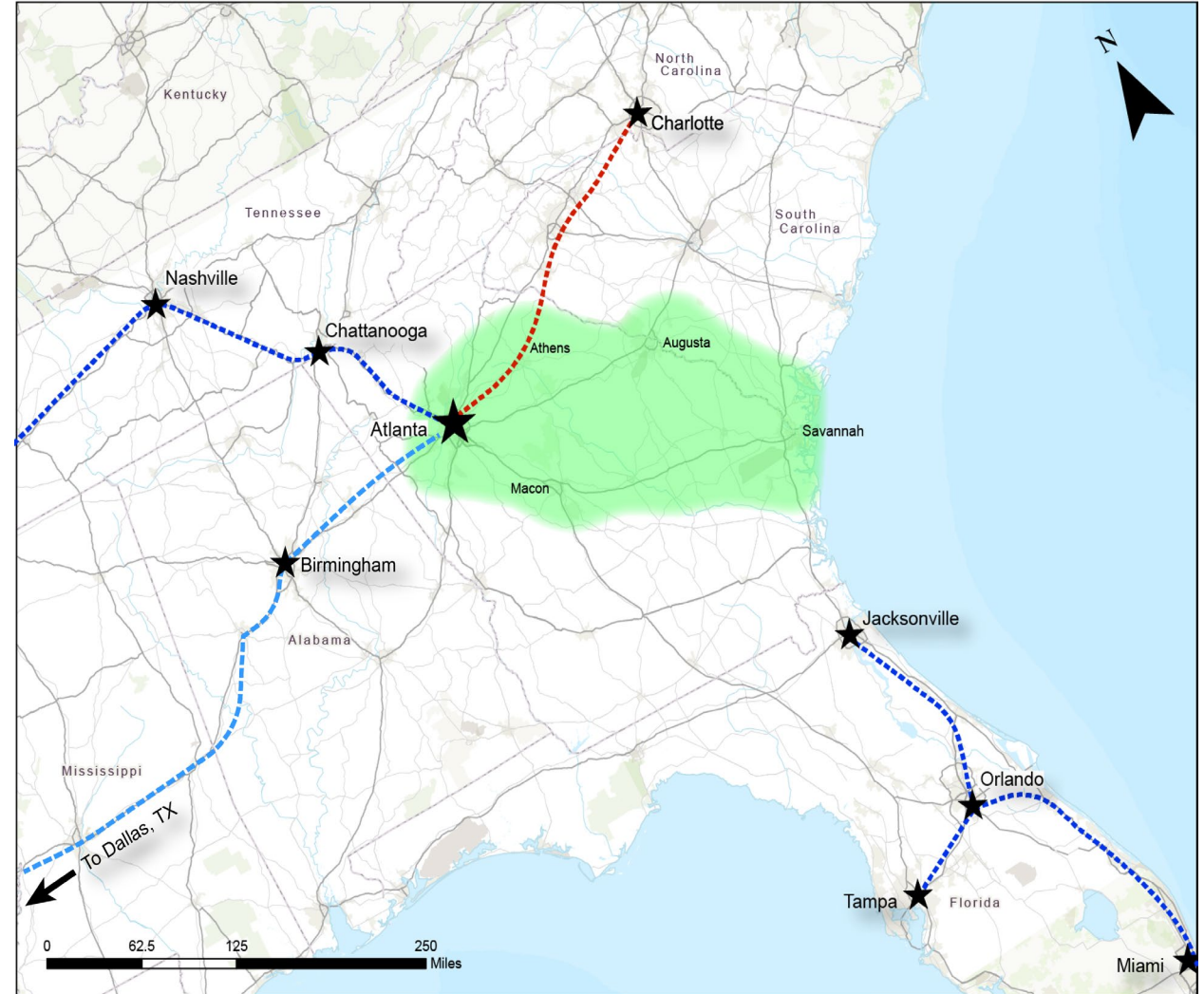
- Atlanta – Savannah (GDOT)
- Charlotte – Atlanta (NCDOT)
- Atlanta – Chattanooga – Nashville – Memphis (City of Chattanooga)

Jacksonville-Orlando-Miami Corridor ID project terminates only ~150 miles from Savannah

ATL-JAX was included in the Southeast Regional Rail plan

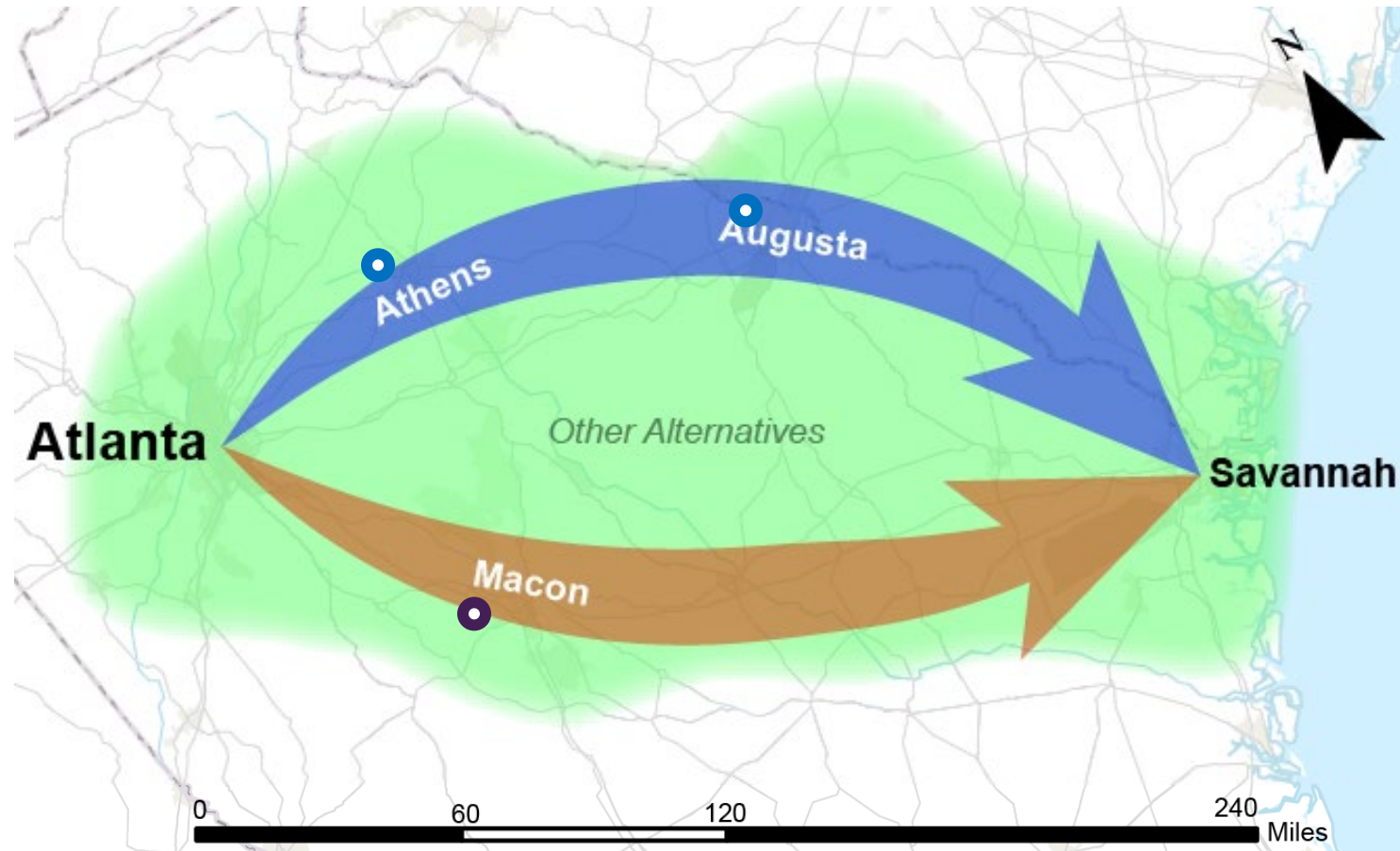
Long Distance Projects

Atlanta – Birmingham – Dallas

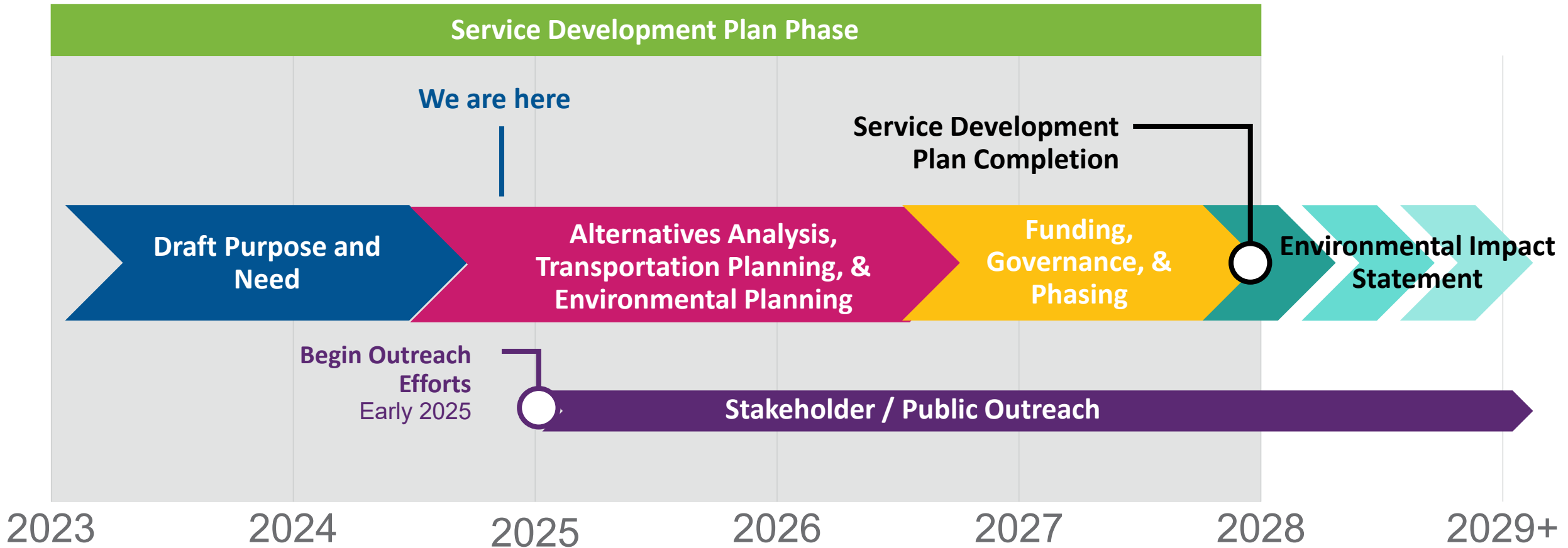


Atlanta to Savannah Passenger Rail Study: Preliminary Objectives

- Evaluate the **benefits** and **costs** of a passenger rail service between Atlanta and Savannah
- Focus on financially **feasible, practical solutions** to **implement** a passenger rail service
- Identify and narrow the range of **service alternatives** across the wide study area



Atlanta to Savannah Passenger Rail Study: Project Schedule





State Rail Plan Comment Map

State Rail Plan Comment Map



Leave a comment on our online map by January 31st



Visit www.dot.ga.gov/GDOT/pages/StateRailPlan.aspx



Email questions to railprogram@dot.ga.gov



Add Your Comment Here

Guide to Add Comment

Map Layers

Public Comment

- Areas with needed rail improvements
- Economic development opportunities
- Existing bottlenecks
- Underway projects that are not represented
- Other feedback

Amtrak Stations

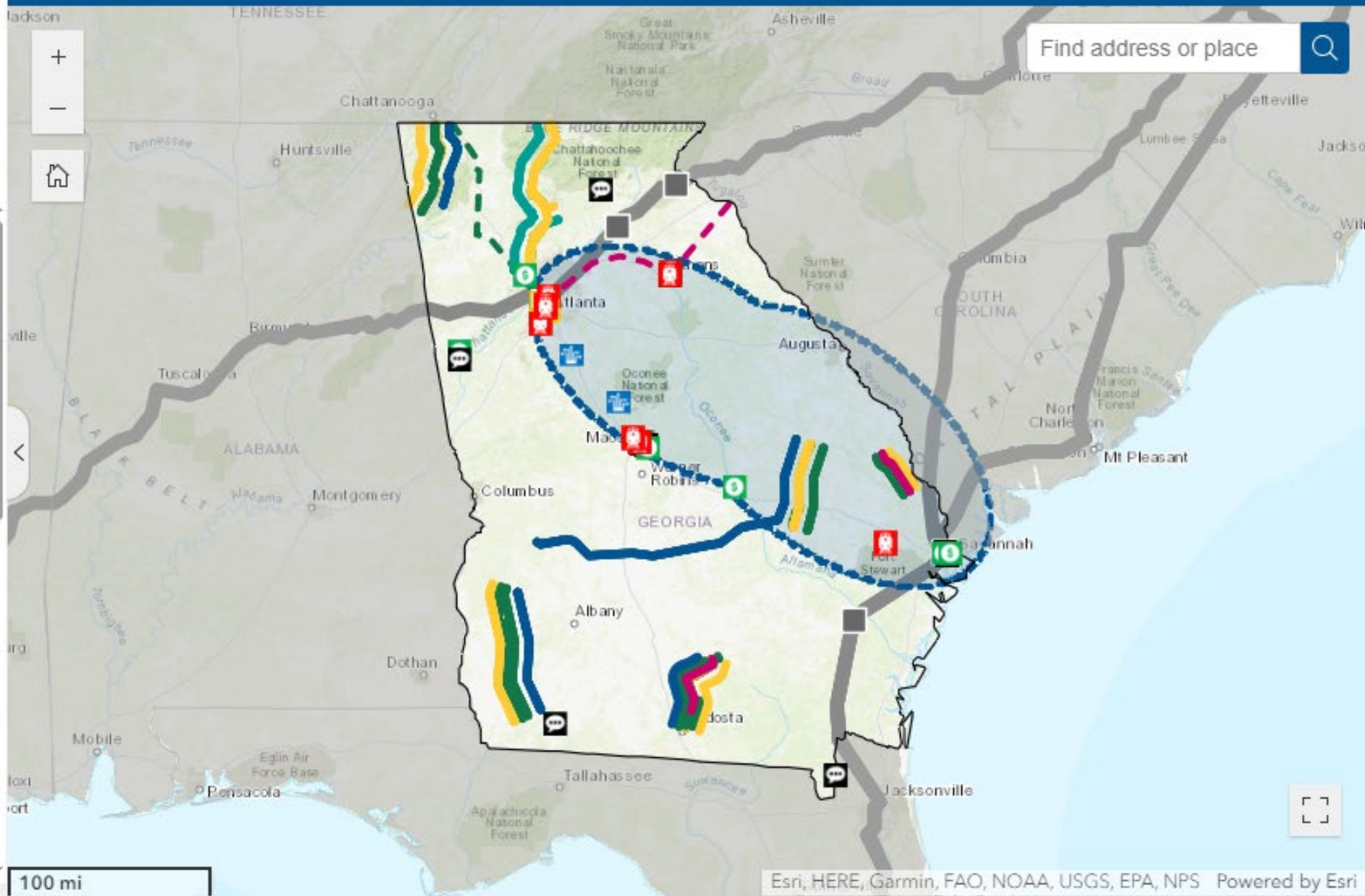


Corridor ID Studies

Applicant

- NCDOT
- City of Chattanooga

GDOT State Rail Plan 2025 Public Comment Map





State Rail Plan Schedule

State Rail Plan Schedule

	2024				2025		
	Sep	Oct	Nov	Dec	Jan	Feb	Mar
Public Involvement	[Blue Bar]						
Rail Interviews / Stakeholder Workshop	[Green Bar]						
Online Public Meeting/ Public Comments		[Blue Bar]					
Rail Infrastructure Analysis	[Green Bar]						
Chapter Preparation	[Blue Bar]						
Final Georgia Rail Plan					[Green Bar]		

State Rail Plan Schedule

Questions?

We're opening the floor to any questions or comments.

Please know that if we don't have time to answer your question, we will be happy to respond via email at a later time.



Stay Engaged



Leave a comment on our online map by January 31st



Visit www.dot.ga.gov/GDOT/pages/StateRailPlan.aspx



Email questions to railprogram@dot.ga.gov



@GeorgiaDOT



@GADeptofTrans



@gadeptoftrans

