



Georgia Department of Transportation



• ECONOMIC IMPACT REPORT FOR •  
**THOMASVILLE REGIONAL AIRPORT**



September 2020

According to Site Selection Magazine, Georgia is **ranked as the #1 state** for doing business.

## Georgia Airports Mean Business.

Airports in Georgia generate positive economic impacts as well as support many other sectors of local and state economies. In the summer of 2019, the Georgia Department of Transportation undertook a statewide study to estimate the annual economic impact of 102 study airports. The study estimated economic impacts for seven commercial airports and 95 general aviation airports. This report includes impacts related to **Thomasville Regional Airport** and summarizes all Statewide Airport Economic Impacts.

## Annual Economic Impacts for Thomasville Regional Airport

Residents, businesses, and visitors benefit from the state's well-developed airport system. While supporting transportation, healthcare, tourism, and commerce, airports contribute to the economy. The Economic Impact Study identified specific economic impacts associated with the **Thomasville Regional Airport** and other airport benefits. Key impacts for the **Thomasville Regional Airport** follow.

Annual Visitors  
**9,934**

Employment Supported  
**111**

Annual Payroll  
**\$4,890,000**

Annual Spending  
**\$15,741,800**

Annual Economic Impact  
**\$20,631,800**

Airport-Supported Annual State & Local Sales & Income Tax Revenues  
**\$774,370**

## Economic Impacts for Thomasville Regional Airport

The table below provides information on the sources of annual economic impact estimated for the **Thomasville Regional Airport**. For more information on the impacts reported here, consult the study's Technical Report available at [dot.ga.gov/IS/AirportAid](http://dot.ga.gov/IS/AirportAid).

### Annual Economic Impacts for Thomasville Regional Airport

	Employment	Payroll	Spending	Total Economic Activity
Airport Management & Business Tenants	74	\$3,842,100	\$13,079,900	\$16,922,000
Capital Investment	13	\$407,900	\$1,669,800	\$2,077,700
General Aviation Visitor Expenditures	24	\$640,000	\$992,100	\$1,632,100
<b>Total</b>	<b>111</b>	<b>\$4,890,000</b>	<b>\$15,741,800</b>	<b>\$20,631,800</b>

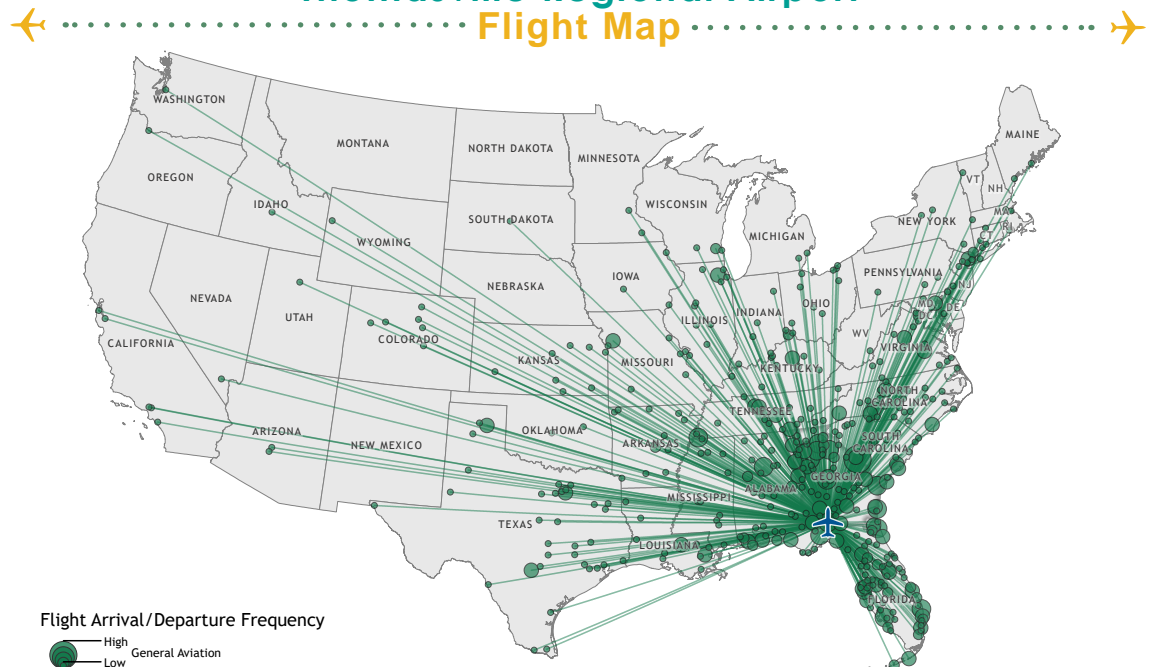
## Georgia Airports Support Connectivity

A flight from a Georgia airport is a gateway to over 40,000 worldwide airports, including over 19,000 airports in the US alone. When employers seek to relocate or expand, proximity to an airport is among the top 10 factors they consider in their decision making. Georgia's tourist industry also depends on the efficiency of air travel.

This map depicts destinations for flights departing from and arriving at **Thomasville Regional Airport** on any given day. This information is generated from the FAA's National Offload Program (NOP). Flights represent only a fraction of all destinations that can be reached directly from the airport. The map helps to show how the airport supports the travel needs of businesses, visitors, and residents of the airport's service area.

## Thomasville Regional Airport

### Flight Map



## Top Five Destinations for Thomasville Regional Airport

**1** Atlanta, Georgia

**2** Augusta, Georgia

**3** Memphis, Tennessee

**4** West Palm Beach, Florida

**5** Gainesville, Georgia

## Statewide Economic Impacts

Shown below are total annual statewide economic impacts. All economic impacts shown in this report for Hartsfield-Jackson Atlanta International Airport were obtained from a separate study for that airport conducted by the City of Atlanta. As shown, when all Georgia airports are considered, total annual statewide economic impacts are estimated at 450,502 jobs, \$9.2 billion in annual payroll, and \$73.7 billion in annual economic activity.

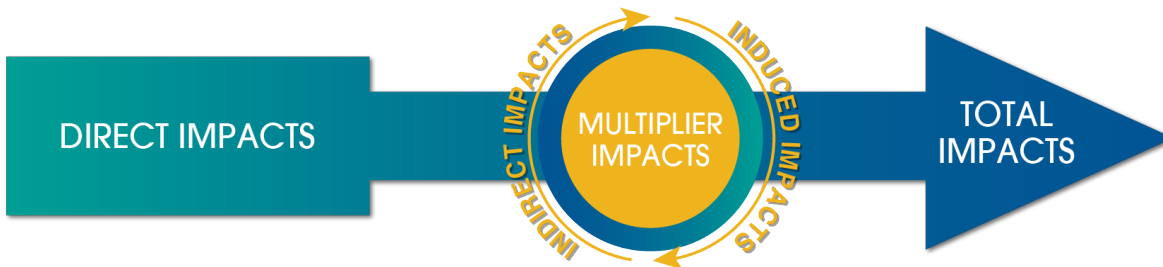
### Statewide Economic Impacts All System Airports

	Hartsfield-Jackson Atlanta International Airport*	Commercial Study Airports	General Aviation Study Airports	State Total
Employment	383,242	52,376	14,893	450,502
Payroll	\$16.7 billion	\$1.3 billion	\$271 million	\$9.2 billion
Economic Activity	\$66.8 billion	\$2.2 billion	\$828 million	\$73.7 billion

\*2016-2017 Technical Report, City of Atlanta Economic Impact Study

## Economic Impact Categories and Measurements

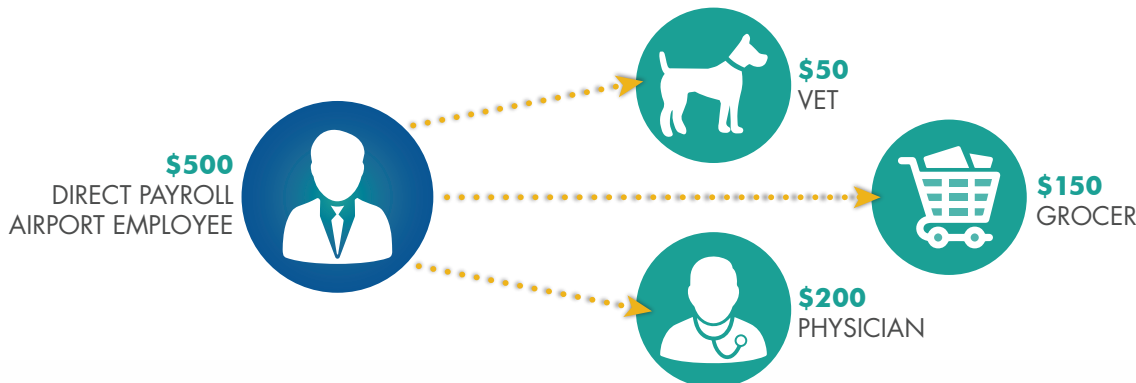
The study identified impacts related to airport management (day-to-day airport operations), aviation-related business tenants, average annual capital investment, expenditures from visitors arriving on general aviation aircraft, and expenditures by visitors arriving on scheduled commercial airline flights. For each of these five categories, impacts were measured for **employment, payroll, spending, and annual economic activity**. Annual economic activity is the sum of payroll and spending. In addition, the study estimated state and local tax revenues that are generated by airport-supported activities.



- Airport Management
- Aviation-Related Business Tenants
- Average Annual Capital Investment
- Visitors Arriving on General Aviation Aircrafts
- Visitors Arriving on Commercial Flights

## Study Methodology

Data collection and survey efforts identified **direct** economic impacts in each of the five impact categories using an approved FAA methodology. A state input/output model (**IMPLAN**) was used to estimate additional **indirect and induced** impacts, sometimes referred to as multiplier impacts. Combined, direct plus indirect/induced impacts equal total state or airport specific economic impacts.



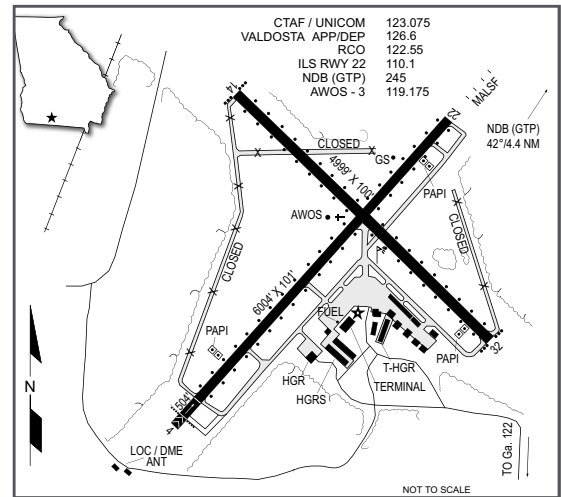
The direct impacts that start at the airport multiply within the state economy. The \$150 of direct impact spent with the grocery results in additional payroll (induced impacts) for the grocer's employees. As the grocery buys supplies, this additional business to business spending results in indirect impacts.

Thomasville is located in southwest Georgia, at the intersection of U.S. Highways 19, 84, and 319. Thomasville is 35 miles northeast of Tallahassee, Florida and is the largest city in and county seat of Thomas County. Thomasville has a diversified manufacturing base including aircraft parts, lumber, food processing, and plastics.

The Thomasville Regional Airport is owned and operated by the City of Thomasville. The airport is located six miles northeast of Thomasville and the airport has two runways. The primary runway, Runway 04/22, is 6,004 feet long and the secondary runway, Runway 14/32, is 4,999 feet long.

There are eight tenants at the airport including AgPro Flight Department, Flowers Foods Flight Department, Frank Murphy Flight Training, Irv Nesmith Flight Training, Plane Station Aircraft Repair, Power of the Past Aviation Engine Museum, RL Aviation, and Shea Aviation. These businesses represent a mix of corporate flight departments, flight training providers, and various types of aircraft maintenance.

The airport supports area, flight training, and medical flights for transporting patients and doctors. The area is a center for quail hunting in southwest Georgia. The airport hosts an annual fly-in event the second weekend of every October.



## Examples of How Thomasville Regional Airport Supports its Community

There is a good chance you benefit from different activities that the airport supports. Airports support healthcare and emergency services. Airports support the state's agricultural and forestry industries, and power companies rely on airports to keep electricity flowing. State and federal agencies use airports to protect the environment, and law enforcement benefits from airports. Businesses throughout Georgia rely on airports to improve their efficiency. Examples of how the airport benefits the community follow.



**Hunting/Recreation:** Hunters who visit Georgia spend a significant amount of money on supplies and equipment; their effect on Georgia's economy and communities is substantial. According to the Georgia Department of Natural Resources, Georgia hosts about 1.5 million hunters annually. Spending by hunters supports almost 24,000 jobs. One of Georgia's timber management companies estimates approximately 60 percent of the hunting leases they provide are for visitors from other states. Millpond, Myrtlewood, and Merrily are examples of local plantations that bring visitors to the area. While these plantations are primarily sought after for the hunting opportunities they provide, the plantations also host weddings, family gatherings, and corporate events. Visitors fly to the area to maximize the time they have to spend on recreational activities. Without quick access provided by the airport, some travelers could choose to vacation elsewhere.

**Business Use:** Airports are tools used by a wide variety of employers to increase their efficiency. When businesses consider where they locate or expand, proximity to an airport is often a top consideration. Airports are also a contributor to an area's economic diversification and growth. Both local and visiting businesses rely on air travel to increase their efficiency. Airports can be used to help companies expand their market areas, reduce employee travel time, provide access for customers and suppliers, and tie together offices in multiple locations. Businesses that rely on and benefit from the airport include Ag-Pro, Flowers Food, FPL Foods, Lewis Jewelers, and Kingdom Insurance. By supporting local and visiting businesses, the airport assists many sectors of the local economy.

**Emergency/Medical Support:** AirCARE1 uses the airport to fly Georgia residents in need of advanced medical care to other parts of Georgia, other areas in the United States, and in some instances, to other parts of the world. Founded by a critical care nurse, AirCARE1 enables area residents to seek out the finest medical care available. While in the air, AirCare1 provides patients with the same level of medical care that the patient receives at the best ground-based medical facilities. AirCARE1 is one of the few air ambulance and medevac providers who have earned dual accreditation, both in U.S. and European medical transport. The flight crew who transports area residents includes two highly experienced and knowledgeable air ambulance pilots; the medical staff on each flight includes a critical care nurse and either a respiratory therapist or a paramedic. AirCARE1's fleet is comprised of Lear 35A jets, and their fleet is outfitted with the most advanced medical technology available to support neonate, pediatric, geriatric, and bariatric patients. Medical support services that the airport facilitates often are unobserved but are critical for urgent medical conditions.

**Georgia Department of Natural Resources:** The Georgia Department of Natural Resources (DNR) helps to oversee state parks and historic resources, wildlife resources, law enforcement, historic preservation, environmental protection, and coastal resources throughout the state. DNR is supported by an aviation unit that uses the airport to support its missions. DNR's aviation unit flew almost 960 hours in 2019, using Georgia airports to support their missions. Almost 33 percent of their hours were flown to protect the state's waterways and woodland areas. DNR assists other agencies such as the Department of Justice, the Environmental Protection Agency, and the Federal Aviation Administration.

### THIS DOCUMENT WAS PREPARED BY

Jviation  
900 S Broadway, Suite 350  
Denver, Colorado 80209  
303.524.3030  
www.jviation.com

Data collection and analysis for this study took place before the onset of the COVID-19 pandemic in March 2020. Results reflect conditions at Georgia airports prior to that time.

### FOR MORE INFORMATION PLEASE CONTACT

Georgia Department of Transportation Aviation Programs  
600 West Peachtree Street NW  
Atlanta, Georgia 30308  
404.631.1990 | dot.ga.gov/IS/AirportAid  
Email: aviationprograms@dot.ga.gov