



Georgia Department of Transportation



• ECONOMIC IMPACT REPORT FOR •
LAGRANGE-CALLAWAY AIRPORT



September 2020

According to Site Selection Magazine, Georgia is ranked as the #1 state for doing business.

Georgia Airports Mean Business.

Airports in Georgia generate positive economic impacts as well as support many other sectors of local and state economies. In the summer of 2019, the Georgia Department of Transportation undertook a statewide study to estimate the annual economic impact of 102 study airports. The study estimated economic impacts for seven commercial airports and 95 general aviation airports. This report includes impacts related to LaGrange-Callaway Airport and summarizes all Statewide Airport Economic Impacts.

Annual Economic Impacts for LaGrange-Callaway Airport

Residents, businesses, and visitors benefit from the state's well-developed airport system. While supporting transportation, healthcare, tourism, and commerce, airports contribute to the economy. The Economic Impact Study identified specific economic impacts associated with the LaGrange-Callaway Airport and other airport benefits. Key impacts for the LaGrange-Callaway Airport follow.

- Annual Visitors **10,557**
- Employment Supported **125**
- Annual Payroll **\$5,266,000**
- Annual Spending **\$11,269,400**
- Annual Economic Impact **\$16,535,400**
- Airport-Supported Annual State & Local Sales & Income Tax Revenues **\$656,020**

Economic Impacts for LaGrange-Callaway Airport

The table below provides information on the sources of annual economic impact estimated for the LaGrange-Callaway Airport. For more information on the impacts reported here, consult the study's Technical Report available at dot.ga.gov/IS/AirportAid.

Annual Economic Impacts for LaGrange-Callaway Airport

	Employment	Payroll	Spending	Total Economic Activity
Airport Management & Business Tenants	78	\$3,950,000	\$8,642,300	\$12,592,300
Capital Investment	7	\$230,800	\$945,000	\$1,175,800
General Aviation Visitor Expenditures	40	\$1,085,200	\$1,682,100	\$2,767,300
Total	125	\$5,266,000	\$11,269,400	\$16,535,400

Georgia Airports Support Connectivity

A flight from a Georgia airport is a gateway to over 40,000 worldwide airports, including over 19,000 airports in the US alone. When employers seek to relocate or expand, proximity to an airport is among the top 10 factors they consider in their decision making. Georgia's tourist industry also depends on the efficiency of air travel.

This map depicts destinations for flights departing from and arriving at LaGrange-Callaway Airport on any given day. This information is generated from the FAA's National Offload Program (NOP). Flights represent only a fraction of all destinations that can be reached directly from the airport. The map helps to show how the airport supports the travel needs of businesses, visitors, and residents of the airport's service area.



Top Five Destinations for LaGrange-Callaway Airport

- 1** Atlanta, Georgia
- 2** Statesboro, Georgia
- 3** Athens, Georgia
- 4** Columbus, Georgia
- 5** Brunswick, Georgia

Statewide Economic Impacts

Shown below are total annual statewide economic impacts. All economic impacts shown in this report for Hartsfield-Jackson Atlanta International Airport were obtained from a separate study for that airport conducted by the City of Atlanta. As shown, when all Georgia airports are considered, total annual statewide economic impacts are estimated at 450,502 jobs, \$9.2 billion in annual payroll, and \$73.7 billion in annual economic activity.

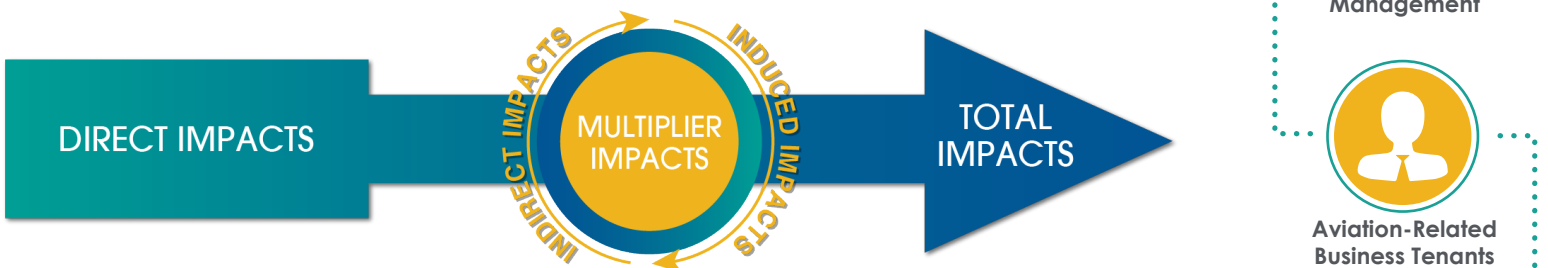
Statewide Economic Impacts All System Airports

	Hartsfield-Jackson Atlanta International Airport*	Commercial Study Airports	General Aviation Study Airports	State Total
Employment	383,242	52,376	14,893	450,502
Payroll	\$16.7 billion	\$1.3 billion	\$271 million	\$9.2 billion
Economic Activity	\$66.8 billion	\$2.2 billion	\$828 million	\$73.7 billion

*2016-2017 Technical Report, City of Atlanta Economic Impact Study

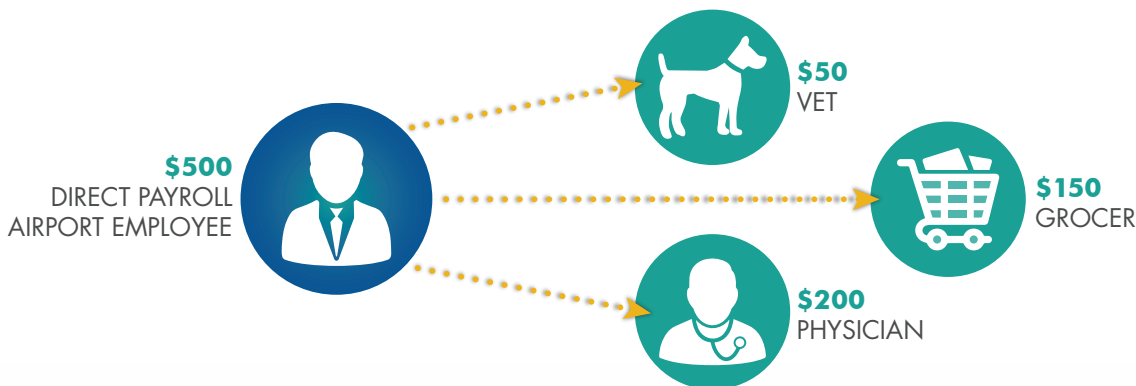
Economic Impact Categories and Measurements

The study identified impacts related to airport management (day-to-day airport operations), aviation-related business tenants, average annual capital investment, expenditures by visitors arriving on general aviation aircraft, and expenditures by visitors arriving on scheduled commercial airline flights. For each of these five categories, impacts were measured for **employment, payroll, spending, and annual economic activity**. Annual economic activity is the sum of payroll and spending. In addition, the study estimated state and local tax revenues that are generated by airport-supported activities.



Study Methodology

Data collection and survey efforts identified **direct** economic impacts in each of the five impact categories using an approved FAA methodology. A state input/output model (**IMPLAN**) was used to estimate additional **indirect and induced** impacts, sometimes referred to as multiplier impacts. Combined, direct plus indirect/induced impacts equal total state or airport specific economic impacts.



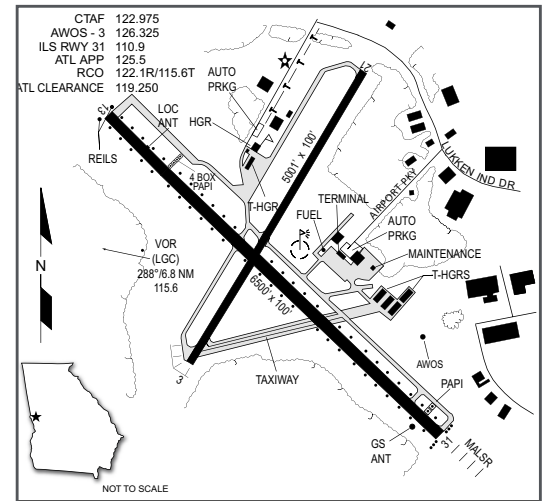
The direct impacts that start at the airport multiply within the state economy. The \$150 of direct impact spent with the grocery results in additional payroll (induced impacts) for the grocer's employees. As the grocery buys supplies, this additional business to business spending results in indirect impacts.

- Airport Management
- Aviation-Related Business Tenants
- Average Annual Capital Investment
- Visitors Arriving on General Aviation Aircrafts
- Visitors Arriving on Commercial Flights

LaGrange-Callaway Airport

The City of LaGrange is located about 50 miles southwest of Atlanta along Interstates 85 and 185 in west-central Georgia. LaGrange is the largest city and the county seat of Troup County. Over the past several years, the area has experienced an economic resurgence with many manufacturing facilities locating in and expanding in the area.

The LaGrange-Callaway Airport is located three miles southwest of LaGrange's central business district. The airport is owned jointly by Troup County and City of LaGrange. The airport has two runways, Runways 13/31, which is 6,500 feet long, and 03/21, which is 5,001 feet. The airport has precision instrument approach to Runway 13/31. The terminal building provides users with a pilot's lounge, snooze room, kitchen, flight planning room, and a conference room. The LaGrange-Callaway Airport has five aviation-related business tenants. Aircraft maintenance and repair services are provided by Southside Aviation. Air Ventures provide flight instruction and aircraft rentals. Air Evac, the largest tenant based at the airport, enhances the local area's quality of life with its 24-hour air ambulance operation. Georgia Crown has its corporate flight department at the airport. LaGrange-Callaway Airport is a gateway for visitors coming to attractions such as West Point Lake, Great Wolf Lodge, and Callaway Gardens.



Examples of How LaGrange-Callaway Airport Supports its Community

There is a good chance you benefit from different activities that the airport supports. Airports support healthcare and emergency services. Airports support the state's agricultural and forestry industries, and power companies rely on airports to keep electricity flowing. State and federal agencies use airports to protect the environment, and law enforcement benefits from airports. Businesses throughout Georgia rely on airports to improve their efficiency. Examples of how the airport benefits the community follow.

Business Use: Airports are tools used by a wide variety of employers to increase many aspects of their efficiency. When businesses consider where they locate or expand, proximity to an airport is often a top consideration. Airports are also a contributor to an area's economic diversification and growth. Both local and visiting businesses rely on air travel to increase their efficiency. Airports can be used to help companies expand market areas, reduce employee travel time, provide access for customers and suppliers, and tie together offices in multiple locations. KIA Motors began operating in the airport's market area in 2009. KIA's local employment is estimated at 15,000. KIA relies on the airport for travel needs and the shipping and receiving of just-in-time parts and supplies. By supporting local and visiting businesses, the airport assists many sectors of the local economy.

Tourism/Recreation: Many parts of Georgia attract visitors on a regular basis. As the state's economic impact study has documented, visitors who arrive in Georgia by air have significant spending that supports jobs and payroll associated with these jobs. Callaway Gardens opened in 1952. This 6,500-acre facility hosts several recreational, lodging, and dining opportunities. Each year, it attracts an estimated 750,000 visitors. Some visitors fly to the area to maximize the time they have to spend on recreational activities. Without quick access provided by the airport, some travelers could choose to vacation elsewhere. By supporting area tourism, the airport helps to contribute to the area's economy.

Emergency Medical Services: Air Evac Lifeteam was established in 1985. The company's goal is to provide air medical transportation and ensure access to emergency health care for more remote communities. The company founders believe that the people who live in rural areas, often far away from a full-service trauma hospital, should have the same benefits when it comes to emergency care, as those who live in a metropolitan community. Air Evac Lifeteam is part of Global Medical Response (GMR), an industry-leading medical transportation company. Air Evac Lifeteam operates more than 140 air ambulance helicopters based across 15 states. Flight crews, consisting of a pilot, flight nurse and flight paramedic, are on duty seven days a week to respond to the scene of an emergency or to provide transportation between medical facilities. Air Evac Lifeteam 77 is based in LaGrange.

Aerial Applicators: Agriculture is an important part of Georgia's economy. Georgia is home to a diverse array of food and fiber products and an assortment of related processing companies. Together, agriculture and its related industries in Georgia, directly and indirectly, account for over \$74.3 billion in economic output and over 411,500 jobs. Georgia is host to over 42,000 farms, encompassing more than 9 million acres; 88 percent of these farms are considered small businesses. The Bureau of Economic Analysis reports nearly 35,000 farm proprietors in the state. Aviation is a tool that supports agriculture in Georgia. Aerial applicators spray crops and timber to prevent the spread of disease and pests. Transient or visiting aerial applicators use the airport to support area farmers.

THIS DOCUMENT WAS PREPARED BY

Jviation
900 S Broadway, Suite 350
Denver, Colorado 80209
303.524.3030
www.jviation.com

Data collection and analysis for this study took place before the onset of the COVID-19 pandemic in March 2020. Results reflect conditions at Georgia airports prior to that time.

FOR MORE INFORMATION PLEASE CONTACT

Georgia Department of Transportation Aviation Programs
600 West Peachtree Street NW
Atlanta, Georgia 30308
404.631.1990 | dot.ga.gov/IS/AirportAid
Email: aviationprograms@dot.ga.gov