



Georgia Department of Transportation



• ECONOMIC IMPACT REPORT FOR •  
**DALTON MUNICIPAL AIRPORT**



September 2020

According to Site Selection Magazine, Georgia is ranked as the #1 state for doing business.

## Georgia Airports Mean Business.

Airports in Georgia generate positive economic impacts as well as support many other sectors of local and state economies. In the summer of 2019, the Georgia Department of Transportation undertook a statewide study to estimate the annual economic impact of 102 study airports. The study estimated economic impacts for seven commercial airports and 95 general aviation airports. This report includes impacts related to Dalton Municipal Airport and summarizes all Statewide Airport Economic Impacts.

### Annual Economic Impacts for Dalton Municipal Airport

Residents, businesses, and visitors benefit from the state's well-developed airport system. While supporting transportation, healthcare, tourism, and commerce, airports contribute to the economy. The Economic Impact Study identified specific economic impacts associated with the Dalton Municipal Airport and other airport benefits. Key impacts for the Dalton Municipal Airport follow.

- Annual Visitors **15,350**
- Employment Supported **71**
- Annual Payroll **\$2,248,400**
- Annual Spending **\$5,533,400**
- Annual Economic Impact **\$7,781,800**
- Airport-Supported Annual State & Local Sales & Income Tax Revenues **\$309,790**

### Economic Impacts for Dalton Municipal Airport

The table below provides information on the sources of annual economic impact estimated for the Dalton Municipal Airport. For more information on the impacts reported here, consult the study's Technical Report available at [dot.ga.gov/IS/AirportAid](http://dot.ga.gov/IS/AirportAid).

#### Annual Economic Impacts for Dalton Municipal Airport

	Employment	Payroll	Spending	Total Economic Activity
Airport Management & Business Tenants	28	\$1,089,100	\$3,303,100	\$4,392,200
Capital Investment	6	\$170,300	\$697,300	\$867,600
General Aviation Visitor Expenditures	37	\$989,000	\$1,533,000	\$2,522,000
<b>Total</b>	<b>71</b>	<b>\$2,248,400</b>	<b>\$5,533,400</b>	<b>\$7,781,800</b>

### Georgia Airports Support Connectivity

A flight from a Georgia airport is a gateway to over 40,000 worldwide airports, including over 19,000 airports in the US alone. When employers seek to relocate or expand, proximity to an airport is among the top 10 factors they consider in their decision making. Georgia's tourist industry also depends on the efficiency of air travel.

This map depicts destinations for flights departing from and arriving at Dalton Municipal Airport on any given day. This information is generated from the FAA's National Offload Program (NOP). Flights represent only a fraction of all destinations that can be reached directly from the airport. The map helps to show how the airport supports the travel needs of businesses, visitors, and residents of the airport's service area.



### Top Five Destinations for Dalton Municipal Airport

- 1** Atlanta, Georgia
- 2** Albany, Georgia
- 3** Jasper, Georgia
- 4** Athens, Georgia
- 5** Swainsboro, Georgia

## Statewide Economic Impacts

Shown below are total annual statewide economic impacts. All economic impacts shown in this report for Hartsfield-Jackson Atlanta International Airport were obtained from a separate study for that airport conducted by the City of Atlanta. As shown, when all Georgia airports are considered, total annual statewide economic impacts are estimated at 450,502 jobs, \$9.2 billion in annual payroll, and \$73.7 billion in annual economic activity.

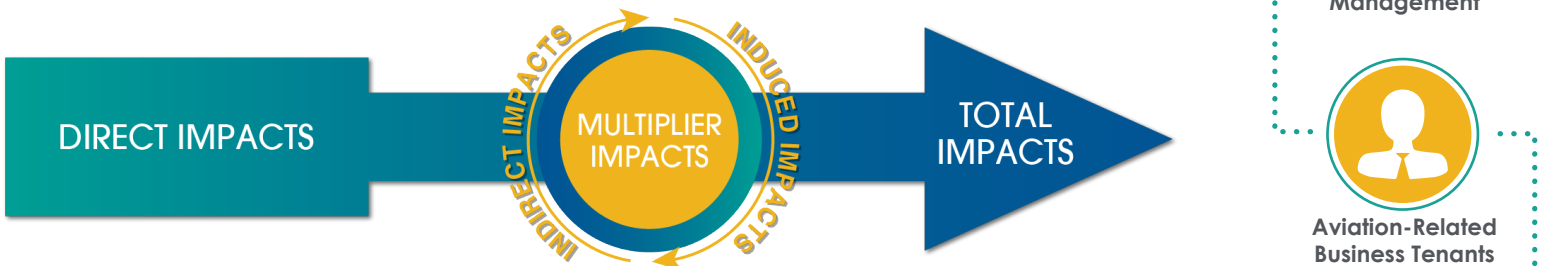
### Statewide Economic Impacts All System Airports

	Hartsfield-Jackson Atlanta International Airport*	Commercial Study Airports	General Aviation Study Airports	State Total
Employment	383,242	52,376	14,893	450,502
Payroll	\$16.7 billion	\$1.3 billion	\$271 million	\$9.2 billion
Economic Activity	\$66.8 billion	\$2.2 billion	\$828 million	\$73.7 billion

\*2016-2017 Technical Report, City of Atlanta Economic Impact Study

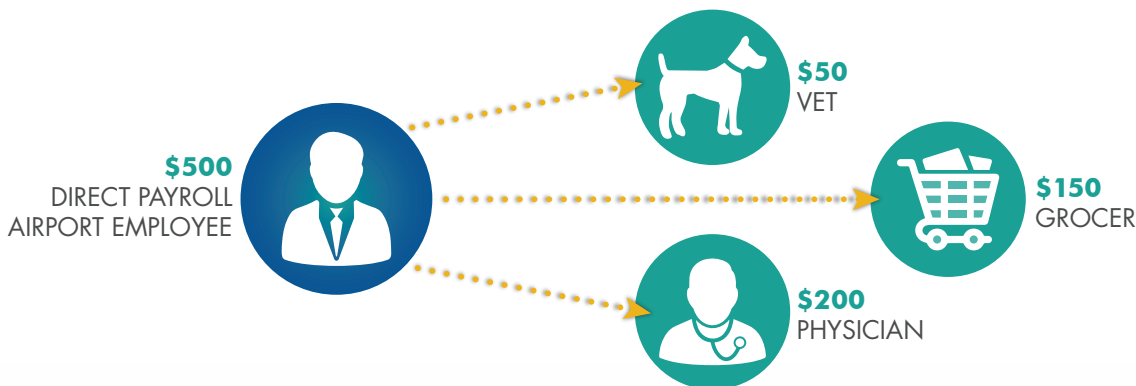
## Economic Impact Categories and Measurements

The study identified impacts related to airport management (day-to-day airport operations), aviation-related business tenants, average annual capital investment, expenditures by visitors arriving on general aviation aircraft, and expenditures by visitors arriving on scheduled commercial airline flights. For each of these five categories, impacts were measured for **employment, payroll, spending, and annual economic activity**. Annual economic activity is the sum of payroll and spending. In addition, the study estimated state and local tax revenues that are generated by airport-supported activities.



## Study Methodology

Data collection and survey efforts identified **direct** economic impacts in each of the five impact categories using an approved FAA methodology. A state input/output model (**IMPLAN**) was used to estimate additional **indirect and induced** impacts, sometimes referred to as multiplier impacts. Combined, direct plus indirect/induced impacts equal total state or airport specific economic impacts.



The direct impacts that start at the airport multiply within the state economy. The \$150 of direct impact spent with the grocery results in additional payroll (induced impacts) for the grocer's employees. As the grocery buys supplies, this additional business to business spending results in indirect impacts.

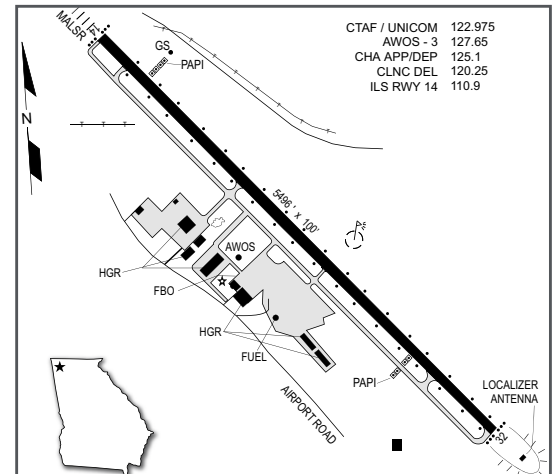
Visitors Arriving on Commercial Flights

## Dalton Municipal Airport

The City of Dalton is located in Whitfield County along Interstate 75 in the foothills of the Blue Ridge Mountains. Nicknamed "The Carpet Capital of the World", Dalton is the second largest city in northwest Georgia.

The Dalton Municipal Airport, owned and operated by the City, is located six miles southeast of the city's central business district. Runway 14/32 is a 5,496-foot-long asphalt runway, with a precision instrument approach. The airport serves a multi-county area in both Georgia and Tennessee. The airport has two business tenants, Cole Aviation and Dalton Aircraft. Cole Aviation provides various types of aircraft maintenance services. Dalton Aircraft is a corporate flight department.

The airport's terminal building provides visitors and pilots with a flight briefing room, pilots' lounge, weather observation, conference rooms, and other flight planning facilities. The Dalton Municipal Airport supports several community events, including monthly Pilot's Association cookouts, EAA Young Eagles youth outreach events, and an annual community open house. The airport supports flight training, aerial inspections and surveys, police and law enforcement flights, forest firefighting, and aerial applicators. The Northwest Georgia Trade and Convention Center attracts visitors who sometimes arrive via the airport to its year-round events.



## Examples of How Dalton Municipal Airport Supports its Community

There is a good chance you benefit from different activities that the airport supports. Airports support healthcare and emergency services. Airports support the state's agricultural and forestry industries, and power companies rely on airports to keep electricity flowing. State and federal agencies use airports to protect the environment, and law enforcement benefits from airports. Businesses throughout Georgia rely on airports to improve their efficiency. Examples of how the airport benefits the community follow.

**Business Use:** Airports are tools used by a wide variety of employers to increase many aspects of their efficiency. When businesses consider where they locate or expand, proximity to an airport is often a top consideration. Airports are also a contributor to an area's economic diversification and growth. Both local and visiting businesses rely on air travel to increase their efficiency. Airports can be used to help companies expand their market areas, reduce employee travel time, provide access for customers and suppliers, and tie together offices in multiple locations. Floor covering production is one of the top industries in Dalton Georgia. Naturally, many of the local floor covering businesses rely on the Dalton Municipal Airport as a vital tool for their business operations. One such company, among many, is Shaw Industries. Shaw Industries Group, Inc. supplies carpet, resilient, hardwood, laminate, tile and stone, synthetic turf, and other specialty products to residential and commercial markets worldwide. The company is a wholly-owned subsidiary of Berkshire Hathaway, Inc., with approximately 22,000 associates worldwide; an estimated 7,000 of these workers are in the Dalton area. Shaw is headquartered in Dalton, Georgia, with salespeople and/or offices located throughout the United States as well as Australia, Belgium, Brazil, Canada, Chile, China, France, India, Mexico, Singapore, United Arab Emirates, and the United Kingdom. The company has over 44 different manufacturing facilities. Aviation effectively and efficiently ties together this type of global company. The airport enables Shaw to maintain its corporate headquarters in Dalton. Other similar companies which operate out of, or directly benefit from the airport are: Engineered Floors, LLC, Textile Rubber and Chemical Company, Cimbar Performance Minerals, Herndon Properties LLC, Advanced Machine Technologies, Perpetual Machine Company, and more.

**Georgia Forestry Commission:** Over 25 million acres, two-thirds of the state of Georgia, is forested. According to the Georgia Forest Commission (GFC), annual economic activity generated by the state's forest industry is estimated at \$36.2 billion. GFC is a state agency responsible for protecting and conserving Georgia's forest resources, and aircraft are essential to enabling GFC to carry out its missions. GFC provides services including fire detection, wildfire suppression and prevention services, rural fire department assistance, forest management assistance, marketing of forest resources, and growing and selling tree seedlings. By supporting GFC, the airport contributes to the state's economy and the safety of its residents and businesses.

**Powerline Patrols:** An estimated 500,000 miles of powerlines snake their way around the United States. General aviation aircraft are often employed to scout the lines and to report problems to the power company. Pilots flying low-power general aviation aircraft make observations on discrepancies, vegetation infringement, and other potential issues that may require maintenance or repair. Georgia Power uses the airport to support its maintenance activities, which include aerial powerline patrols that are necessary to provide reliable and economical service to customers. Georgia's electric highway consists of 12,500 miles of powerlines. Following storms, aircraft can quickly survey area powerlines for damage. Quick aerial response, supported by the airport, results in targeted dispatch of repair crews to assist with restoring power in a timely fashion.

**Law Enforcement:** The airport supports important law enforcement activities. The Georgia State Patrol (GSP) Aviation Division operates 24/7 to provide air support for different assignments and frequently utilizes the Dalton Municipal Airport as a base for local operations. GSP supports public safety interests for the citizens of Dalton, as well as statewide. The GSP Aviation Division performs aerial search and rescue missions utilizing infra-red cameras, and many missing persons have been located from the air using this technology. Other missions supported by the GSP Aviation Division include manhunts, aerial photography, aerial surveillance, natural disaster response, SWAT missions, and fire suppression. The Division has also become a nationwide leader for its innovative use of aircraft to suppress the distribution of illegal substances.

**Agency Use:** The Georgia Department of Natural Resources (DNR), in cooperation with the U.S. Department of Agriculture (USDA), uses the airport as a base of operations to aerial drop oral rabies vaccinations. The Dalton Municipal Airport is one of many airports around the country which supports this important operation. Helicopters are utilized to drop the vaccine bait in populated areas. Then, fixed wing aircraft target the rural areas of Dade, Catoosa, Whitfield, Walker, Murray, and Chattooga counties. The project also covers areas in Tennessee, Alabama and North Carolina. Using the airport, the project distributes more than 880,000 baits by air on an annual basis. The bait is not harmful to humans, pets, or other species, according to USDA. Over the past 30 years, rabies management has increased as the disease has spread in raccoons, skunks, foxes, coyotes and bats. The airport is helping to address an important public health challenge by supporting the distribution of this vaccine.

### THIS DOCUMENT WAS PREPARED BY

Jviation  
900 S Broadway, Suite 350  
Denver, Colorado 80209  
303.524.3030  
www.jviation.com

*Data collection and analysis for this study took place before the onset of the COVID-19 pandemic in March 2020. Results reflect conditions at Georgia airports prior to that time.*

### FOR MORE INFORMATION PLEASE CONTACT

Georgia Department of Transportation Aviation Programs  
600 West Peachtree Street NW  
Atlanta, Georgia 30308  
404.631.1990 | dot.ga.gov/IS/AirportAid  
Email: aviationprograms@dot.ga.gov