



Georgia Department of Transportation



• ECONOMIC IMPACT REPORT FOR •  
**W.H. “BUD” BARRON AIRPORT**



September 2020

According to Site Selection Magazine, Georgia is **ranked as the #1 state** for doing business.

### Georgia Airports Mean Business.

Airports in Georgia generate positive economic impacts as well as support many other sectors of local and state economies. In the summer of 2019, the Georgia Department of Transportation undertook a statewide study to estimate the annual economic impact of 102 study airports. The study estimated economic impacts for seven commercial airports and 95 general aviation airports. This report includes impacts related to **W.H. "Bud" Barron Airport** and summarizes all Statewide Airport Economic Impacts.

### Annual Economic Impacts for W.H. "Bud" Barron Airport

Residents, businesses, and visitors benefit from the state's well-developed airport system. While supporting transportation, healthcare, tourism, and commerce, airports contribute to the economy. The Economic Impact Study identified specific economic impacts associated with the **W.H. "Bud" Barron Airport** and other airport benefits. Key impacts for the **W.H. "Bud" Barron Airport** follow.

- Annual Visitors **4,485**
- Employment Supported **22**
- Annual Payroll **\$601,300**
- Annual Spending **\$1,829,100**
- Annual Economic Impact **\$2,430,400**
- Airport-Supported Annual State & Local Sales & Income Tax Revenues **\$102,530**

### Economic Impacts for W.H. "Bud" Barron Airport

The table below provides information on the sources of annual economic impact estimated for the **W.H. "Bud" Barron Airport**. For more information on the impacts reported here, consult the study's Technical Report available at [dot.ga.gov/IS/AirportAid](http://dot.ga.gov/IS/AirportAid).

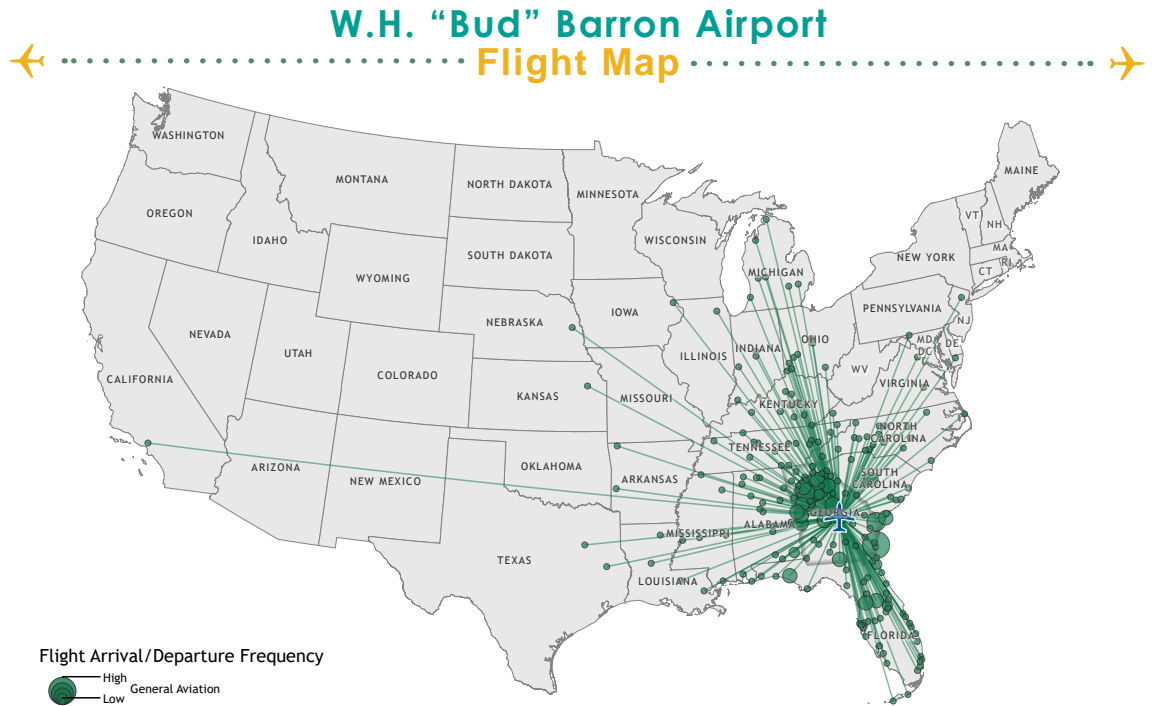
Annual Economic Impacts for W.H. "Bud" Barron Airport

	Employment	Payroll	Spending	Total Economic Activity
Airport Management & Business Tenants	8	\$228,700	\$1,038,700	\$1,267,400
Capital Investment	3	\$83,700	\$342,500	\$426,200
General Aviation Visitor Expenditures	11	\$288,900	\$447,900	\$736,800
<b>Total</b>	<b>22</b>	<b>\$601,300</b>	<b>\$1,829,100</b>	<b>\$2,430,400</b>

### Georgia Airports Support Connectivity

A flight from a Georgia airport is a gateway to over 40,000 worldwide airports, including over 19,000 airports in the US alone. When employers seek to relocate or expand, proximity to an airport is among the top 10 factors they consider in their decision making. Georgia's tourist industry also depends on the efficiency of air travel.

This map depicts destinations for flights departing from and arriving at **W.H. "Bud" Barron Airport** on any given day. This information is generated from the FAA's National Offload Program (NOP). Flights represent only a fraction of all destinations that can be reached directly from the airport. The map helps to show how the airport supports the travel needs of businesses, visitors, and residents of the airport's service area.



### Top Five Destinations for W.H. "Bud" Barron Airport

- 1** Augusta, Georgia
- 2** Brunswick, Georgia
- 3** Atlanta, Georgia
- 4** Savannah, Georgia
- 5** Macon, Georgia

## Statewide Economic Impacts

Shown below are total annual statewide economic impacts. All economic impacts shown in this report for Hartsfield-Jackson Atlanta International Airport were obtained from a separate study for that airport conducted by the City of Atlanta. As shown, when all Georgia airports are considered, total annual statewide economic impacts are estimated at 450,502 jobs, \$9.2 billion in annual payroll, and \$73.7 billion in annual economic activity.

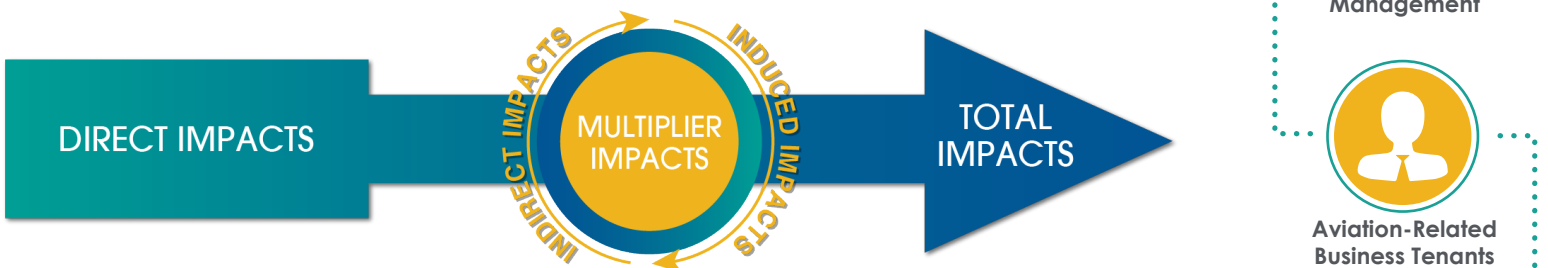
### Statewide Economic Impacts All System Airports

	Hartsfield-Jackson Atlanta International Airport*	Commercial Study Airports	General Aviation Study Airports	State Total
Employment	383,242	52,376	14,893	450,502
Payroll	\$16.7 billion	\$1.3 billion	\$271 million	\$9.2 billion
Economic Activity	\$66.8 billion	\$2.2 billion	\$828 million	\$73.7 billion

\*2016-2017 Technical Report, City of Atlanta Economic Impact Study

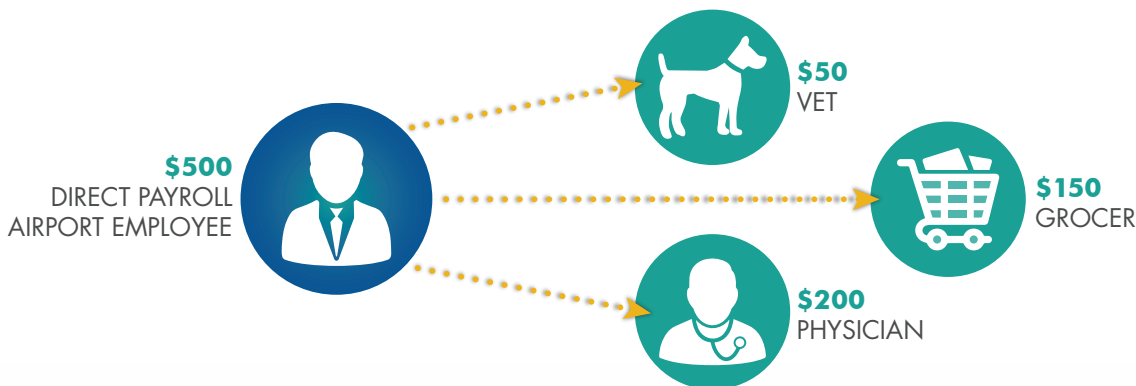
## Economic Impact Categories and Measurements

The study identified impacts related to airport management (day-to-day airport operations), aviation-related business tenants, average annual capital investment, expenditures by visitors arriving on general aviation aircraft, and expenditures by visitors arriving on scheduled commercial airline flights. For each of these five categories, impacts were measured for **employment, payroll, spending, and annual economic activity**. Annual economic activity is the sum of payroll and spending. In addition, the study estimated state and local tax revenues that are generated by airport-supported activities.



## Study Methodology

Data collection and survey efforts identified **direct** economic impacts in each of the five impact categories using an approved FAA methodology. A state input/output model (**IMPLAN**) was used to estimate additional **indirect and induced** impacts, sometimes referred to as multiplier impacts. Combined, direct plus indirect/induced impacts equal total state or airport specific economic impacts.



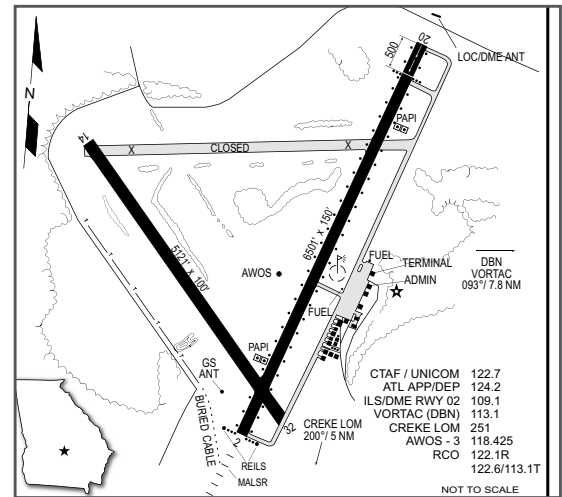
The direct impacts that start at the airport multiply within the state economy. The \$150 of direct impact spent with the grocery results in additional payroll (induced impacts) for the grocer's employees. As the grocery buys supplies, this additional business to business spending results in indirect impacts.

Visitors Arriving on Commercial Flights

## W.H. "Bud" Barron Airport

The City of Dublin is located in the heart of central Georgia midway between Atlanta and Savannah. Dublin serves as the county seat of Laurens County. W.H. "Bud" Barron Airport is located three miles northwest of Dublin at the junction of interstate 16 and U.S. Highways 80, 319 and 441. The airport has two runways. The primary runway, Runway 02/20, is 6,501 feet long and equipped with a precision instrument landing system. The secondary runway, Runway 14/32, is 5,121 feet long.

Dublin Air Service is the airport's fixed base operator and offers a full range of aviation services including aircraft maintenance, flight training, fuel, and aircraft storage. The airport also supports local area businesses and aerial applicators.



## Examples of How W.H. "Bud" Barron Airport Supports its Community

There is a good chance you benefit from different activities that the airport supports. Airports support healthcare and emergency services. Airports support the state's agricultural and forestry industries, and power companies rely on airports to keep electricity flowing. State and federal agencies use airports to protect the environment, and law enforcement benefits from airports. Businesses throughout Georgia rely on airports to improve their efficiency. Examples of how the airport benefits the community follow.

**Emergency Medical Services:** Air Evac Lifeteam 102 is based at the airport. From their location, a crew of medical and flight professionals serves a 30-mile flight radius. They are experts at providing emergency medical services. Typical operations that Air Evac Lifeteam 102 supports include responding to accidents, transporting people from accident sites, and moving patients from smaller local hospitals to medical facilities where advanced and specialty medical services are available. Air Evac Lifeteam 102 adds value to the quality of life for residents in the airport's market area.

**Business Use:** Airports are tools used by a wide variety of employers to increase many aspects of their efficiency. When businesses consider where they locate or expand, proximity to an airport is often a top consideration. Airports are also an important contributor to an area's economic diversification and growth. Both local and visiting businesses rely on air travel to increase their efficiency. Airports can be used to help companies expand their market areas, reduce employee travel time, provide access for customers and suppliers, and tie together offices in multiple locations. Two of the businesses that rely on and benefit from the airport include Complete Siteworks Services and Dublin Construction Company. Many times, construction companies rely on aviation so that they can check on the status of development projects that are hundreds of miles apart. Using aviation, construction management teams can visit multiple development locations in a single day. By supporting these local and visiting businesses, the airport assists many sectors of the local economy.

**Law Enforcement:** The airport supports essential law enforcement activities. The Georgia State Patrol (GSP) Aviation Division uses the airport and operates 24/7 to provide air support for different assignments. The GSP Aviation Division performs search and rescue missions utilizing infra-red cameras, and many missing persons have been located from the air using this technology. Other missions supported by the GSP Aviation Division include manhunts, aerial photography, aerial surveillance, natural disaster response, SWAT missions, and fire suppression. The Division has become a nationwide leader for its innovative use of aircraft to suppress the distribution of illegal substances. By supporting GSP activities, the airport contributes to promoting the safety of residents, businesses, and visitors.

**Aerial Applicators:** Agriculture has been an important part of Georgia's economy. Georgia is home to a diverse array of food and fiber products and an assortment of related processing companies. Together, agriculture and its related industries in Georgia, directly and indirectly, account for over \$74.3 billion dollars in economic output and over 411,500 jobs. Georgia is host to over 42,000 farms, encompassing more than 9 million acres; 88 percent of these farms are considered small businesses. The Bureau of Economic Analysis reports nearly 35,000 farm proprietors in the state. Aviation is a tool that supports agriculture in Georgia. Aerial applicators spray crops and timber to prevent the spread of disease and pests. Crops are also sometimes fertilized from the air. By supporting aerial applicators, the airport helps to benefit area farmers.

### THIS DOCUMENT WAS PREPARED BY

Jviation  
900 S Broadway, Suite 350  
Denver, Colorado 80209  
303.524.3030  
www.jviation.com

*Data collection and analysis for this study took place before the onset of the COVID-19 pandemic in March 2020. Results reflect conditions at Georgia airports prior to that time.*

### FOR MORE INFORMATION PLEASE CONTACT

Georgia Department of Transportation Aviation Programs  
600 West Peachtree Street NW  
Atlanta, Georgia 30308  
404.631.1990 | dot.ga.gov/IS/AirportAid  
Email: aviationprograms@dot.ga.gov

