



Georgia Department of Transportation



• ECONOMIC IMPACT REPORT FOR •
COVINGTON MUNICIPAL AIRPORT



September 2020

According to Site Selection Magazine, Georgia is ranked as the #1 state for doing business.

Georgia Airports Mean Business.

Airports in Georgia generate positive economic impacts as well as support many other sectors of local and state economies. In the summer of 2019, the Georgia Department of Transportation undertook a statewide study to estimate the annual economic impact of 102 study airports. The study estimated economic impacts for seven commercial airports and 95 general aviation airports. This report includes impacts related to Covington Municipal Airport and summarizes all Statewide Airport Economic Impacts.

Annual Economic Impacts for Covington Municipal Airport

Residents, businesses, and visitors benefit from the state's well-developed airport system. While supporting transportation, healthcare, tourism, and commerce, airports contribute to the economy. The Economic Impact Study identified specific economic impacts associated with the Covington Municipal Airport and other airport benefits. Key impacts for the Covington Municipal Airport follow.

- Annual Visitors **10,469**
- Employment Supported **148**
- Annual Payroll **\$5,981,900**
- Annual Spending **\$12,910,900**
- Annual Economic Impact **\$18,892,800**
- Airport-Supported Annual State & Local Sales & Income Tax Revenues **\$763,690**

Economic Impacts for Covington Municipal Airport

The table below provides information on the sources of annual economic impact estimated for the Covington Municipal Airport. For more information on the impacts reported here, consult the study's Technical Report available at dot.ga.gov/IS/AirportAid.

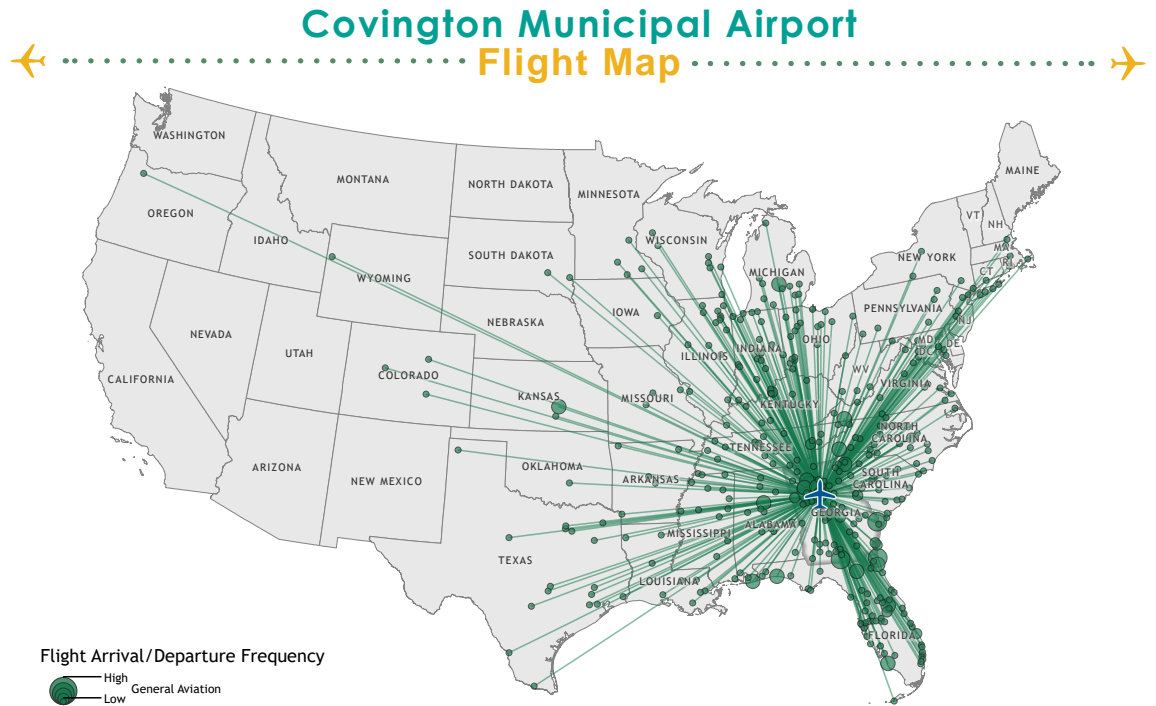
Annual Economic Impacts for Covington Municipal Airport

| | Employment | Payroll | Spending | Total Economic Activity |
|---------------------------------------|------------|--------------------|---------------------|-------------------------|
| Airport Management & Business Tenants | 100 | \$4,623,000 | \$9,564,400 | \$14,187,400 |
| Capital Investment | 16 | \$487,400 | \$1,995,500 | \$2,482,900 |
| General Aviation Visitor Expenditures | 32 | \$871,500 | \$1,351,000 | \$2,222,500 |
| Total | 148 | \$5,981,900 | \$12,910,900 | \$18,892,800 |

Georgia Airports Support Connectivity

A flight from a Georgia airport is a gateway to over 40,000 worldwide airports, including over 19,000 airports in the US alone. When employers seek to relocate or expand, proximity to an airport is among the top 10 factors they consider in their decision making. Georgia's tourist industry also depends on the efficiency of air travel.

This map depicts destinations for flights departing from and arriving at Covington Municipal Airport on any given day. This information is generated from the FAA's National Offload Program (NOP). Flights represent only a fraction of all destinations that can be reached directly from the airport. The map helps to show how the airport supports the travel needs of businesses, visitors, and residents of the airport's service area.



Top Five Destinations for Covington Municipal Airport

- 1** Atlanta, Georgia
- 2** Fernandina Beach, Florida
- 3** Savannah, Georgia
- 4** Valdosta, Georgia
- 5** Canton, Georgia

Statewide Economic Impacts

Shown below are total annual statewide economic impacts. All economic impacts shown in this report for Hartsfield-Jackson Atlanta International Airport were obtained from a separate study for that airport conducted by the City of Atlanta. As shown, when all Georgia airports are considered, total annual statewide economic impacts are estimated at 450,502 jobs, \$9.2 billion in annual payroll, and \$73.7 billion in annual economic activity.

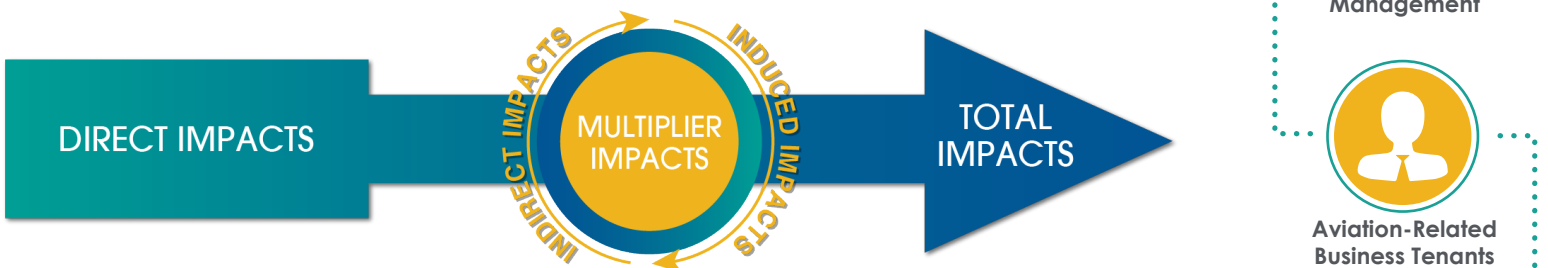
Statewide Economic Impacts All System Airports

| | Hartsfield-Jackson Atlanta International Airport* | Commercial Study Airports | General Aviation Study Airports | State Total |
|-------------------|---|---------------------------|---------------------------------|----------------|
| Employment | 383,242 | 52,376 | 14,893 | 450,502 |
| Payroll | \$16.7 billion | \$1.3 billion | \$271 million | \$9.2 billion |
| Economic Activity | \$66.8 billion | \$2.2 billion | \$828 million | \$73.7 billion |

*2016-2017 Technical Report, City of Atlanta Economic Impact Study

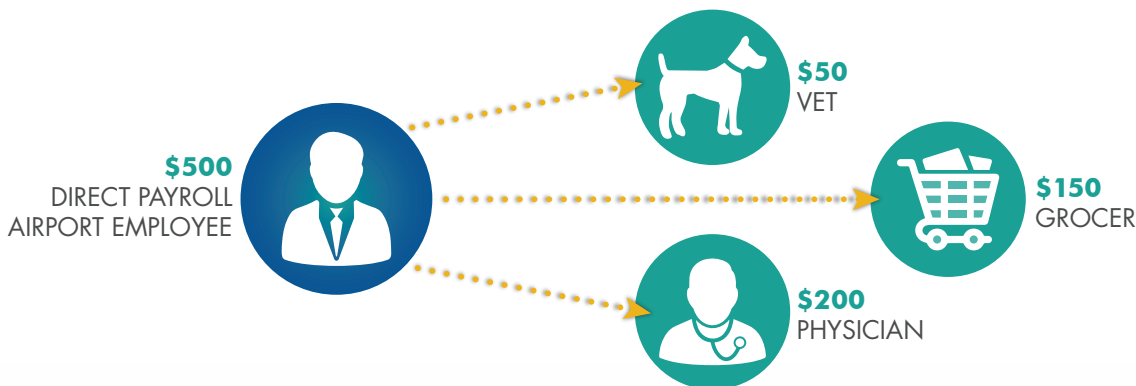
Economic Impact Categories and Measurements

The study identified impacts related to airport management (day-to-day airport operations), aviation-related business tenants, average annual capital investment, expenditures by visitors arriving on general aviation aircraft, and expenditures by visitors arriving on scheduled commercial airline flights. For each of these five categories, impacts were measured for **employment, payroll, spending, and annual economic activity**. Annual economic activity is the sum of payroll and spending. In addition, the study estimated state and local tax revenues that are generated by airport-supported activities.



Study Methodology

Data collection and survey efforts identified **direct** economic impacts in each of the five impact categories using an approved FAA methodology. A state input/output model (**IMPLAN**) was used to estimate additional **indirect and induced** impacts, sometimes referred to as multiplier impacts. Combined, direct plus indirect/induced impacts equal total state or airport specific economic impacts.



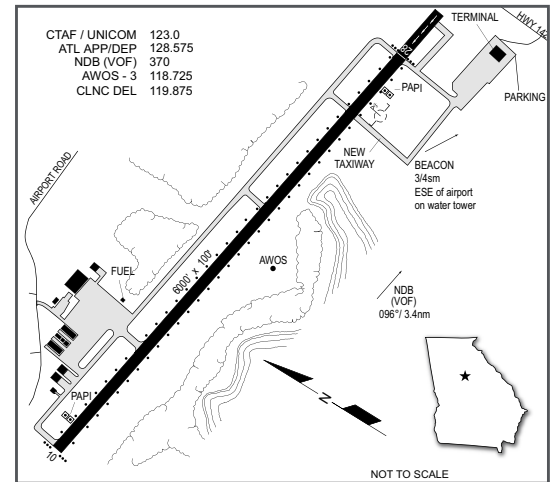
The direct impacts that start at the airport multiply within the state economy. The \$150 of direct impact spent with the grocery results in additional payroll (induced impacts) for the grocer's employees. As the grocery buys supplies, this additional business to business spending results in indirect impacts.

Visitors Arriving on Commercial Flights

Covington Municipal Airport

Covington Municipal Airport is located in Newton County, approximately 35 miles east of Atlanta and 43 miles southwest of Athens. The airport is within the greater Atlanta metropolitan area with approximately 360,000 people within a 30-minute drive time from the airport. The primary highway access to the airport from the north and south is via Georgia Highway 81; and from the east and west, access is via Interstate 20. Other highways in the airport vicinity include US Highway 278 and Georgia Highway 120. Covington has a thriving industrial base that includes the manufacturing of food products, plastics, golf balls, and automotive supplies. The Newton County area is also a popular location for film and television production and has served as the filming location for the Dukes of Hazard, The Vampire Diaries, and the remake of the popular film Footloose.

The airport is owned and operated by the City of Covington. The airport's runway, Runway 10/28, is 6,000 feet long and complimented with a parallel taxiway. The airport's terminal includes a pilot's lounge. Airport accommodates general aviation related activities including corporate/business jet use and recreational flying. The airport's primary business tenants include Aerodox (maintenance); Air Methods (emergency services); Brendon Brown (flight instruction); Southern Air Group (maintenance); and Standridge Color (corporate flight department).



Examples of How Covington Municipal Airport Supports its Community

There is a good chance you benefit from different activities that the airport supports. Airports support healthcare and emergency services. Airports support the state's agricultural and forestry industries, and power companies rely on airports to keep electricity flowing. State and federal agencies use airports to protect the environment, and law enforcement benefits from airports. Businesses throughout Georgia rely on airports to improve their efficiency. Examples of how the airport benefits the community follow.

Business Use: Airports are tools used by a wide variety of employers to increase many aspects of their efficiency. When businesses consider where they locate or expand, proximity to an airport is often a top consideration. Airports are also a contributor to an area's economic diversification and growth. Both local and visiting businesses rely on air travel to increase their efficiency. Airports help companies expand their market areas, reduce employee travel time, provide access for customers and suppliers, and tie together offices in multiple locations. Examples of area businesses that rely on the airport include the Standridge Color Corporation (thermoplastics), Takeda Pharmaceutical Company (plasma and other related manufacturing), Michelin Retread Technologies (tires), Bridgestone Golf (manufacturing), and C.R. Bard (medical devices). Facebook is building a \$42 billion data center near the airport, and the airport has supported trips by engineers and others working on this major economic development project. Other businesses that use the airport include Dart Container Corporation and Ingles Markets. By supporting local and visiting businesses, the airport assists many sectors of the local economy.

Emergency Medical Services: Air Methods is based at the airport. Air Methods delivers lifesaving care to more than 100,000 patients each year. They are experts at providing emergency medical services by air. Typical operations that Air Methods supports include responding to accidents, transporting people to a hospital, and moving patients from local hospitals to larger medical facilities where advanced and specialty medical services are available.

Powerline Patrols: Georgia's electric highway or powerlines covers 12,500 miles. RotorWorks is a company that uses the airport; they specialize in clearing and inspecting powerlines. The company has inspected over 300,000 miles of transmission lines, providing real-time digital information to power companies. They also provide digital mapping services to GDOT and the Corp of Engineers. By supporting their operations, the airport helps to ensure the area's uninterrupted flow of electricity.

Agency Use: Agencies in Georgia rely on airports and aerial support. Agencies that frequently rely on the airport include the Georgia State Patrol and the Georgia Department of Natural Resources. These agencies use the airport for a wide variety of activities. Examples include forest fire prevention, protection of wildlife management areas and waterways, drug enforcement, and other types of law enforcement.

THIS DOCUMENT WAS PREPARED BY

Jviation
900 S Broadway, Suite 350
Denver, Colorado 80209
303.524.3030
www.jviation.com

Data collection and analysis for this study took place before the onset of the COVID-19 pandemic in March 2020. Results reflect conditions at Georgia airports prior to that time.

FOR MORE INFORMATION PLEASE CONTACT

Georgia Department of Transportation Aviation Programs
600 West Peachtree Street NW
Atlanta, Georgia 30308
404.631.1990 | dot.ga.gov/IS/AirportAid
Email: aviationprograms@dot.ga.gov