



Georgia Department of Transportation



• ECONOMIC IMPACT REPORT FOR •
AUGUSTA REGIONAL AIRPORT AT BUSH FIELD



September 2020

According to Site Selection Magazine, Georgia is **ranked as the #1 state** for doing business.

Georgia Airports Mean Business.

Airports in Georgia generate positive economic impacts as well as support many other sectors of local and state economies. In the summer of 2019, the Georgia Department of Transportation undertook a statewide study to estimate the annual economic impact of 102 study airports. The study estimated economic impacts for seven commercial airports and 95 general aviation airports. This report includes impacts related to **Augusta Regional Airport at Bush Field** and summarizes all Statewide Airport Economic Impacts.

Annual Economic Impacts for Augusta Regional Airport at Bush Field

Residents, businesses, and visitors benefit from the state's well-developed airport system. While supporting transportation, healthcare, tourism, and commerce, airports contribute to the economy. The Economic Impact Study identified specific economic impacts associated with the **Augusta Regional Airport at Bush Field** and other airport benefits. Key impacts for the **Augusta Regional Airport at Bush Field** follow.

Annual General Aviation Visitors
30,835

Annual Commercial Visitors
148,580

Employment Supported
2,639

Annual Payroll
\$101,017,100

Annual Spending
\$184,690,600

Annual Economic Impact
\$285,707,700

Airport-Supported Annual State & Local Sales & Income Tax Revenues
\$12,986,650

Economic Impacts for Augusta Regional Airport at Bush Field

The table below provides information on the sources of annual economic impact estimated for the **Augusta Regional Airport at Bush Field**. For more information on the impacts reported here, consult the study's Technical Report available at dot.ga.gov/IS/AirportAid.

Annual Economic Impacts for Augusta Regional Airport at Bush Field

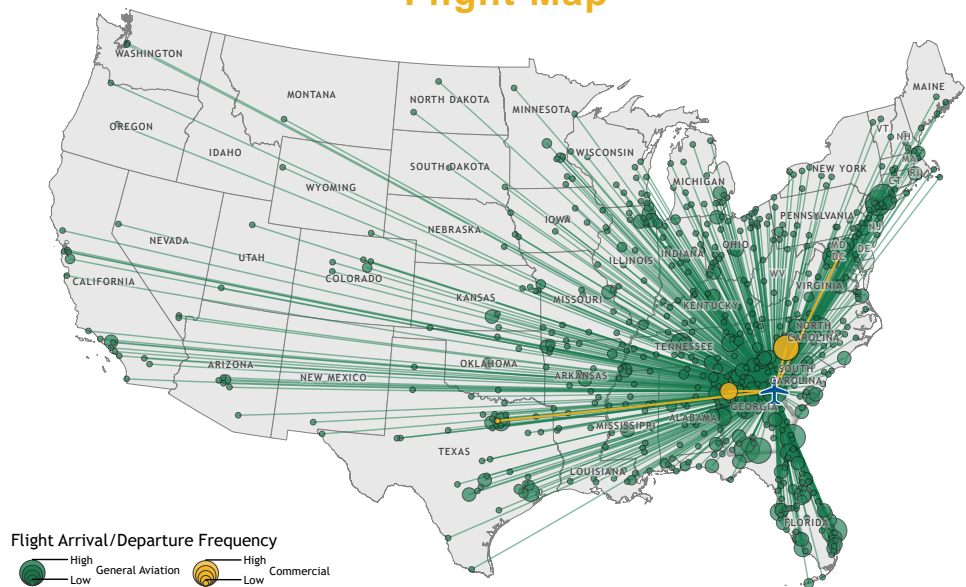
	Employment	Payroll	Spending	Total Economic Activity
Airport Management & Business Tenants	1,234	\$63,159,000	\$74,042,400	\$137,201,400
Capital Investment	48	\$1,467,300	\$6,007,100	\$7,474,400
General Aviation Visitor Expenditures	117	\$3,169,600	\$4,913,300	\$8,082,900
Commercial Visitor Expenditures	1,240	\$33,221,200	\$99,727,800	\$132,949,000
Total	2,639	\$101,017,100	\$184,690,600	\$285,707,700

Georgia Airports Support Connectivity

A flight from a Georgia airport is a gateway to over 40,000 worldwide airports, including over 19,000 airports in the U.S. alone. When employers seek to relocate or expand, proximity to an airport is among the top 10 factors they consider in their decision making. Georgia's tourist industry also depends on the efficiency of air travel.

This map depicts destinations for flights departing from and arriving at **Augusta Regional Airport at Bush Field** on any given day. This information is generated from the FAA's National Offload Program (NOP). Flights represent only a fraction of all destinations that can be reached directly from the airport. The map helps to show how the airport supports the travel needs of businesses, visitors, and residents of the airport's service area.

Augusta Regional Airport at Bush Field Flight Map



Data Source: FAA Traffic Flight Management System (TFMS), CY 2018

Top Five Destinations for Augusta Regional Airport at Bush Field

- 1 Atlanta, Georgia
- 2 Savannah, Georgia
- 3 Birmingham, Alabama
- 4 Teterboro, New Jersey
- 5 Brunswick, Georgia

Statewide Economic Impacts

Shown below are total annual statewide economic impacts. All economic impacts shown in this report for Hartsfield-Jackson Atlanta International Airport were obtained from a separate study for that airport conducted by the City of Atlanta. As shown, when all Georgia airports are considered, total annual statewide economic impacts are estimated at 450,502 jobs, \$9.2 billion in annual payroll, and \$73.7 billion in annual economic activity.

Statewide Economic Impacts All System Airports

	Hartsfield-Jackson Atlanta International Airport*	Commercial Study Airports	General Aviation Study Airports	State Total
Employment	383,242	52,376	14,893	450,502
Payroll	\$16.7 billion	\$1.3 billion	\$271 million	\$9.2 billion
Economic Activity	\$66.8 billion	\$2.2 billion	\$828 million	\$73.7 billion

*2016-2017 Technical Report, City of Atlanta Economic Impact Study

Economic Impact Categories and Measurements

The study identified impacts related to airport management (day-to-day airport operations), aviation-related business tenants, average annual capital investment, expenditures by visitors arriving on general aviation aircraft, and expenditures by visitors arriving on scheduled commercial airline flights. For each of these five categories, impacts were measured for **employment, payroll, spending, and annual economic activity**. Annual economic activity is the sum of payroll and spending. In addition, the study estimated state and local tax revenues that are generated by airport-supported activities.



Airport Management



Aviation-Related Business Tenants



Average Annual Capital Investment



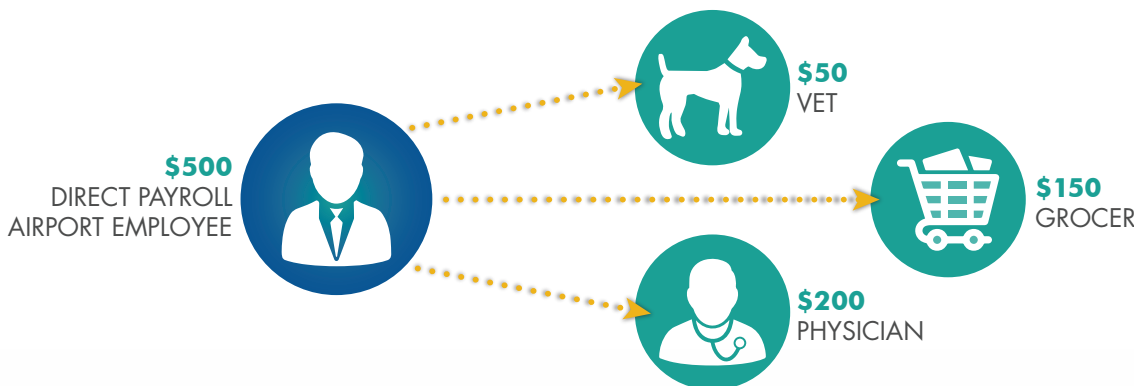
Visitors Arriving on General Aviation Aircrafts



Visitors Arriving on Commercial Flights

Study Methodology

Data collection and survey efforts identified **direct** economic impacts in each of the five impact categories using an approved FAA methodology. A state input/output model (**IMPLAN**) was used to estimate additional **indirect and induced** impacts, sometimes referred to as multiplier impacts. Combined, direct plus indirect/induced impacts equal total state or airport specific economic impacts.



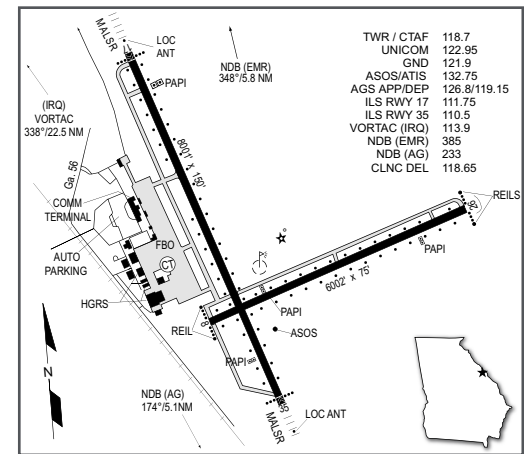
The direct impacts that start at the airport multiply within the state economy. The \$150 of direct impact spent with the grocery results in additional payroll (induced impacts) for the grocer's employees. As the grocery buys supplies, this additional business to business spending results in indirect impacts.

Augusta Regional Airport at Bush Field

The City of Augusta is located in east central Georgia at the intersection of Interstate 20 and US Highway 25 along the Savannah River in Richmond County. Augusta is the second largest city in Georgia and is home to the world-famous Masters Golf Tournament. Augusta is a community supported by a well-educated labor force; a low cost of living; and diversified economic base which includes manufacturing, medicine, biotechnology, and the military.

Augusta Regional at Bush Field is located six miles south of Augusta's central business district; the airport is owned and operated by the City of Augusta. The airport has two runways, Runway 17/35 which is 8,001 feet long and Runway 8/26 which is 6,002 feet long. Completed in 2006, an updated commercial service terminal enables efficient movement of airline passengers, supporting a restaurant, retail concessions, internet access, valet parking, rental car, and other ground transportation services. Both American Airlines and Delta Air Lines provide daily scheduled service with multiple daily flights to connecting hubs in Atlanta and Charlotte.

There are over 25 different aviation-related businesses operating at the airport. These businesses provide services to the airlines, support services needed by commercial airline travelers, and provide various services to all types of general aviation aircraft. StandAero is the largest on-airport business with close to 200 employees, they provide aircraft engine overhaul services. There are about 10 corporate flight departments located at the airport. Other aviation businesses located at the airport provide flight training, aircraft fueling, and various types of aircraft maintenance.



Examples of How Augusta Regional Airport at Bush Field Supports its Community

There is a good chance you benefit from different activities that the airport supports. Airports support healthcare and emergency services. Airports support the state's agricultural and forestry industries, and power companies rely on airports to keep electricity flowing. State and federal agencies use airports to protect the environment, and law enforcement benefits from airports. Businesses throughout Georgia rely on airports to improve their efficiency. Examples of how the airport benefits the community follow.

Agency Use: The Georgia Department of Economic Development routinely uses the Airport when hosting prospects. Often when businesses are contemplating relocating or expanding, proximity to an airport with scheduled commercial airline service is an important factor in their decision-making process. AGS has non-stop commercial flights to Charlotte, Dallas, Atlanta and Washington, DC. The Airport also owns the Fixed Base Operation (FBO) which caters to general aviation, business and military aircraft. The Airport and the services it supports are key to the area's economy and economic diversification.

There are many other agencies that rely on the airport to support their missions and activities and to improve their efficiencies. Fort Gordon and the National Security Agency rely on the airport to support many of their transportation needs. AGS also supports various aspects of the Savannah River Site and the U.S. Department of Energy. By supporting these agencies, the airport adds value in many ways to the local area and to the state.

Economic Diversification: AGS has created the Skyworx Innovation Xchange (Skyworx), an aerospace business incubator, in an effort to foster entrepreneurial startups and new aviation oriented businesses. The incubator will be a huge benefit to the Airport and the region, helping to create revenue diversification and economic resilience. Benefits of the Skyworx Program include new business creation, new job creation, fresh revenue infusion, new tax base generation, aerospace business cluster expansion, and increased investments in innovation and industry in the Aiken/Augusta area.

StandardAero, a Maintenance Repair and Overhaul (MRO) company has operated on the airfield since 1975. The MRO is a global firm headquartered in the U.S. They have approximately 200 employees at AGS, providing important and high paying jobs for the region.

Additionally, AGS is in the process of developing an industrial park in the southeast quadrant of the airfield. Development of the park, with approximately 150 acres, is ongoing, with plans to build taxiway access and ramp space in order to attract aerospace and aviation businesses in need of airport/runway access.

Tourism/Recreation: Since 1934, the Masters Golf Tournament has been held at the Augusta National Golf Club on the first full week of April. Over four days and 72 holes, 90-100 professional golfers compete in the first major championship tournament of the year bringing in tens of thousands of visitors to the region. Many of these visitors arrive in Augusta by way of the Augusta Regional Airport from locations around the U.S. and the world.

Augusta metro area also attracts several other large sporting events throughout the year. These include the Ironman Triathlon, Peach Jam, Augusta Futurity and the Aiken Triple Crown to name a few. These events bring visitors from around the globe through the Augusta Regional Airport.

THIS DOCUMENT WAS PREPARED BY

Jviation
900 S Broadway, Suite 350
Denver, Colorado 80209
303.524.3030
www.jviation.com

FOR MORE INFORMATION PLEASE CONTACT

Georgia Department of Transportation Aviation Programs
600 West Peachtree Street NW
Atlanta, Georgia 30308
404.631.1990 | dot.ga.gov/IS/AirportAid
Email: aviationprograms@dot.ga.gov