

DADE COUNTY MULTIMODAL TRANSPORTATION STUDY



MEETING NO. 2
PROJECT ADVISORY PANEL
MARCH 3, 2011



Today's Discussion Items

2

- **Summary from Previous Meeting (11-18-10)**
- **Activities since Previous Meeting**
- **Travel Demand Model**
- **Outreach Update**
- **Schedule**
- **Next Steps**
- **Group Interactive Activities**



November 18th Meeting Overview

3

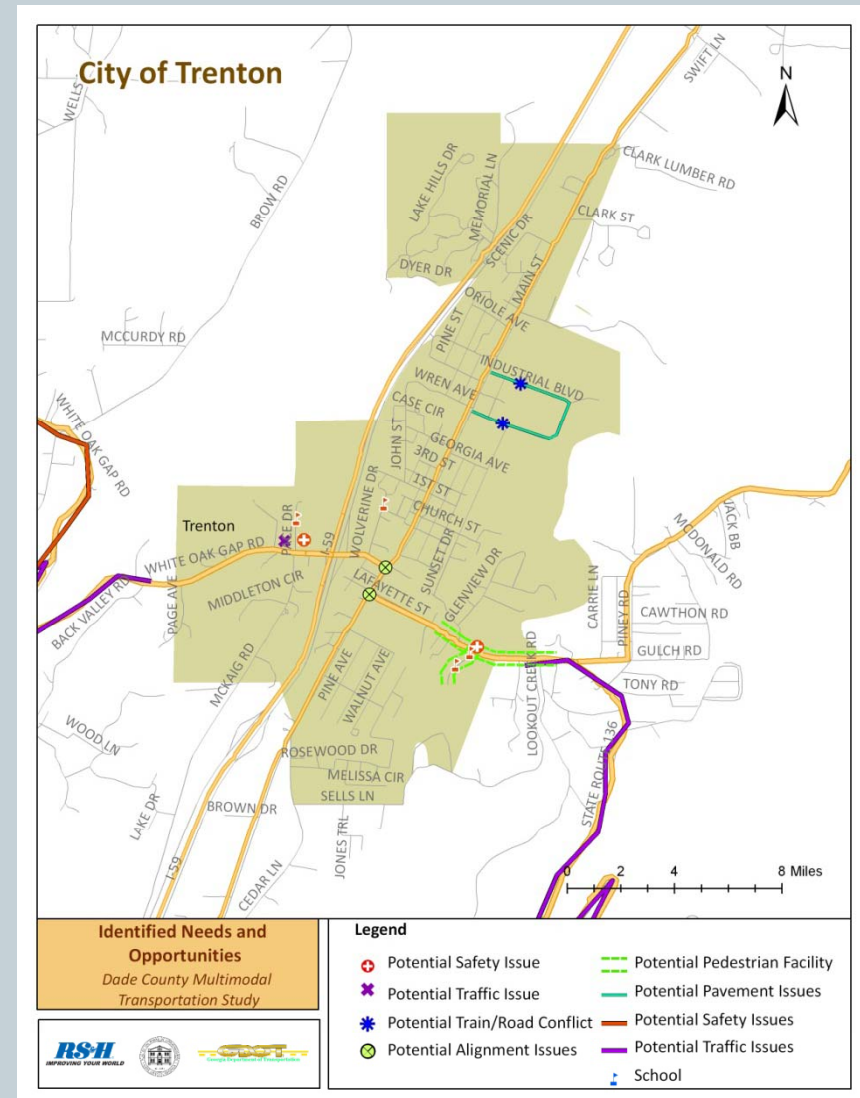
- **Overview Presentation**
 - Study Purpose
 - Inventory of Existing Conditions
 - Planned and Programmed Projects
- **Group Discussion**
 - Confirmed and Identified Issues and Opportunities
 - Future Growth Areas
 - Planned and Programmed Projects



Activities Since Previous Meeting

4

- Finalized List of Issues and Opportunities
- Completed Data Collection
- Developed Travel Demand Model
- Assessment of Existing and Future Needs



Issues and Opportunities

What We Have Heard

5

Traffic and Congestion:

- Traffic along SR 136 East and West
- School related traffic
- Truck traffic
- Traffic around Covenant College

Trucks/Industrial Park:

- Plans to expand industrial park – a new interchange to accommodate the truck traffic
- Norfolk-Southern (NS) train traffic increased in recent years
- NS stops train on track in Industrial Park
- Only one (1) road sign for trucks
- Bethune Garden Center curve – difficult to maneuver

Safety Issues:

- Intersection of SR 136 and SR 11, lanes shift
- Fog on SR 189 and SR 301, better reflectors
- Intersection of SR 301 and SR 136
- SR 136 East, Soil beneath second horseshoe beginning to slide
- SR 189, around Covenant College
- Many areas that need guardrails
- I-59 / I-24 split, high number of fatalities. Better signage
- Need flashing light/reflectors because of fog at Old State Road and SR 157 and Yankee Road and SR 157

Issues and Opportunities

What We Have Heard

6

School-Specific Safety

- Accidents in front of Dade County High School
- Poor lighting around schools
- Safety/Evacuation issue for Middle School – only one way in and out
- Creek Road floods, buses have to be re-routed
- Flashing light needed at Old State Road and Yankee Road

Sidewalks / Pedestrians / Bicyclists

- Need sidewalks around schools
- County Goal: Become more pedestrian friendly
- Planned to construct sidewalks in North Trenton, state could not match
- Roads aren't cyclist friendly

Accessibility:

- Tatum and Cole City are hard to reach
- Limited east-west connectivity
- Limited north-south connectivity

Transit / Commuter Needs

- Volkswagen has hired 700 people
- No taxi service in County
- Park and Ride would be beneficial

Future Growth

- Growth within North Dade County feasible in next 5-20 years
- USDA grant pending, if received, construction of sewer in North Dade
- Commercial development needed in North Dade

Issues and Opportunities

What We Have Heard

7

Major Activity Centers / High Traffic Areas:

- School-related traffic for both the AM and PM peak periods
- SR 136 East and West at Hells Gap and White Oak Gap



*Entrance to Dade County
High School*

DADE COUNTY MULTIMODAL TRANSPORTATION STUDY

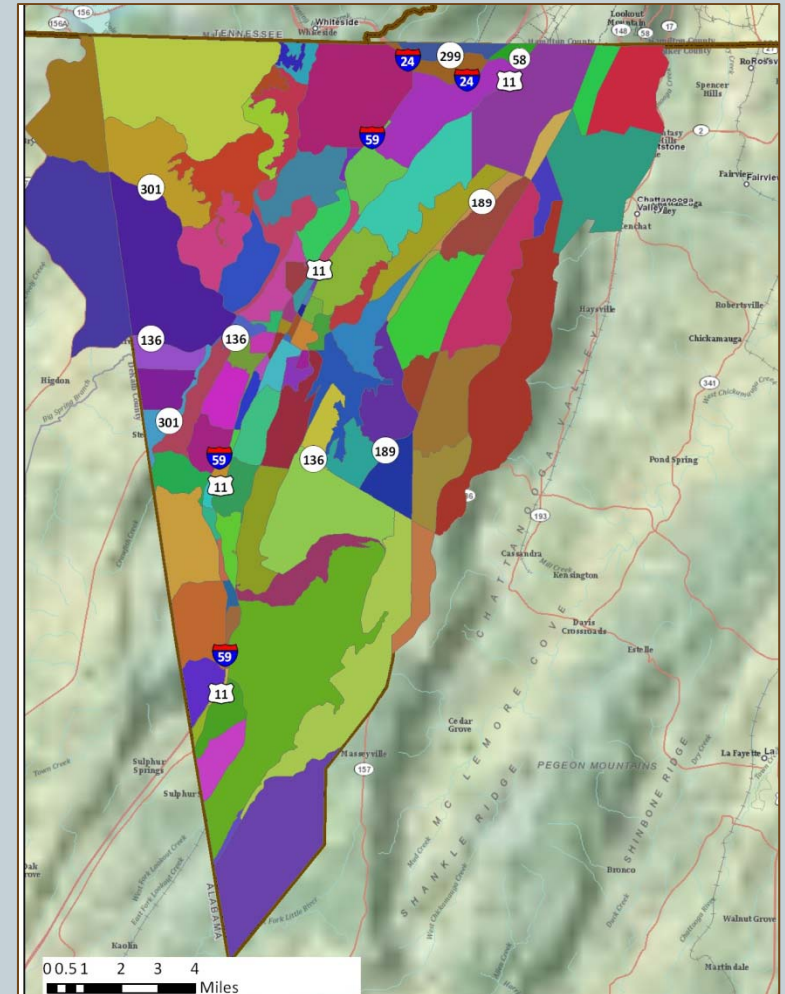


TRAVEL DEMAND MODEL

Travel Demand Model - Overview

9

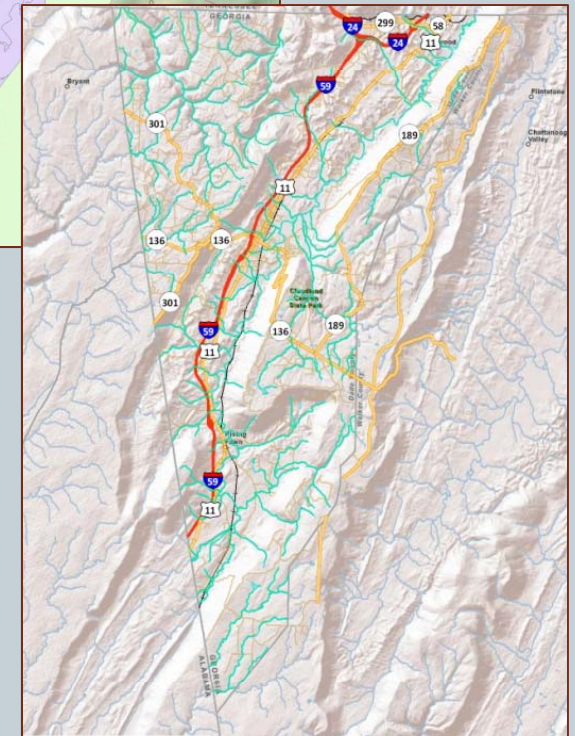
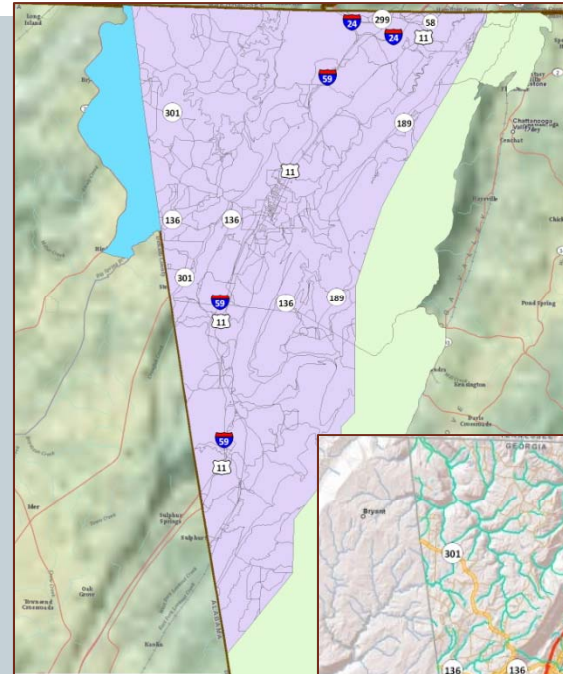
- **Travel Demand Model**
 - Allows for Analysis of Potential Congestion
 - Divides County into 105 Traffic Analysis Zones (TAZs)
- **Analysis Years**
 - Base Year (2007); Future Years (2020, 2030 and 2040)
- **Study Area**
 - Dade County and Parts of Walker County, Georgia and Jackson, County Alabama



Travel Demand Model – Analysis

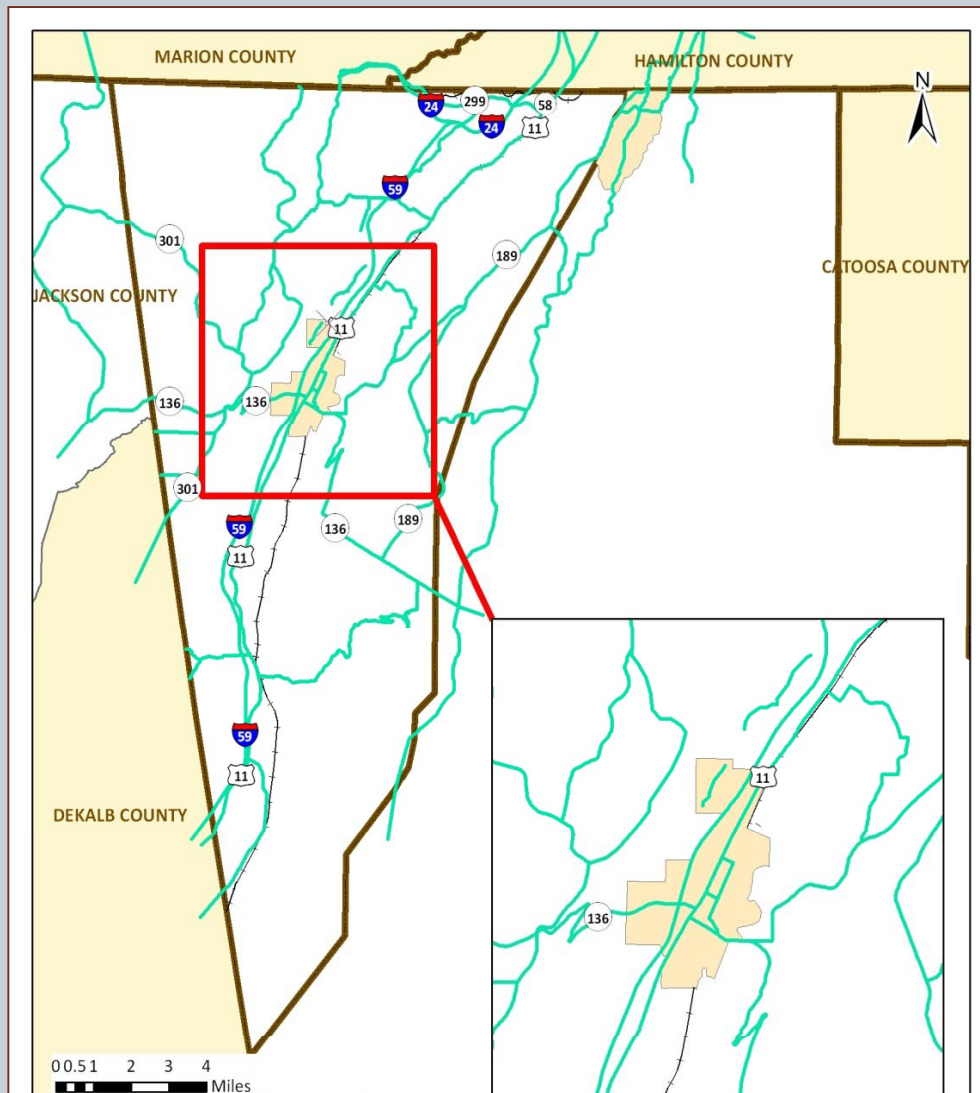
10

- **Defining TAZs**
 - ✦ U.S. Census Information
 - ✦ Major Topographic Barriers
 - ✦ Other Factors (i.e. Land Uses)
- **Socio-Economic Data Entered for Each TAZ by Analysis Year**
 - ✦ Population
 - ✦ Households
 - ✦ Employment
 - ✦ School Enrollment
- **Compared Against GDOT Statewide Model**



Travel Demand Model – Network

11



- Includes Major Roadways
 - Collectors
 - Arterials
 - Interstates
- Helps to Assess Traffic to/from Each TAZ
- Each Roadway “Link” is Specifically Coded
 - Number of Lanes
 - Functional Classification

Socio-Economic Development – Dade County Population Control Totals

12

Year	Population	Source
2007	16,098	Census Estimate
2020	19,234	GA Office of Planning and Budget
2030	21,836	GA Office of Planning and Budget
2040	25,244	GA Office of Planning and Budget*

** Trendline Used to Estimate Year 2040 Population*

Socio-Economic Development – Dade County Employment Control Totals

13

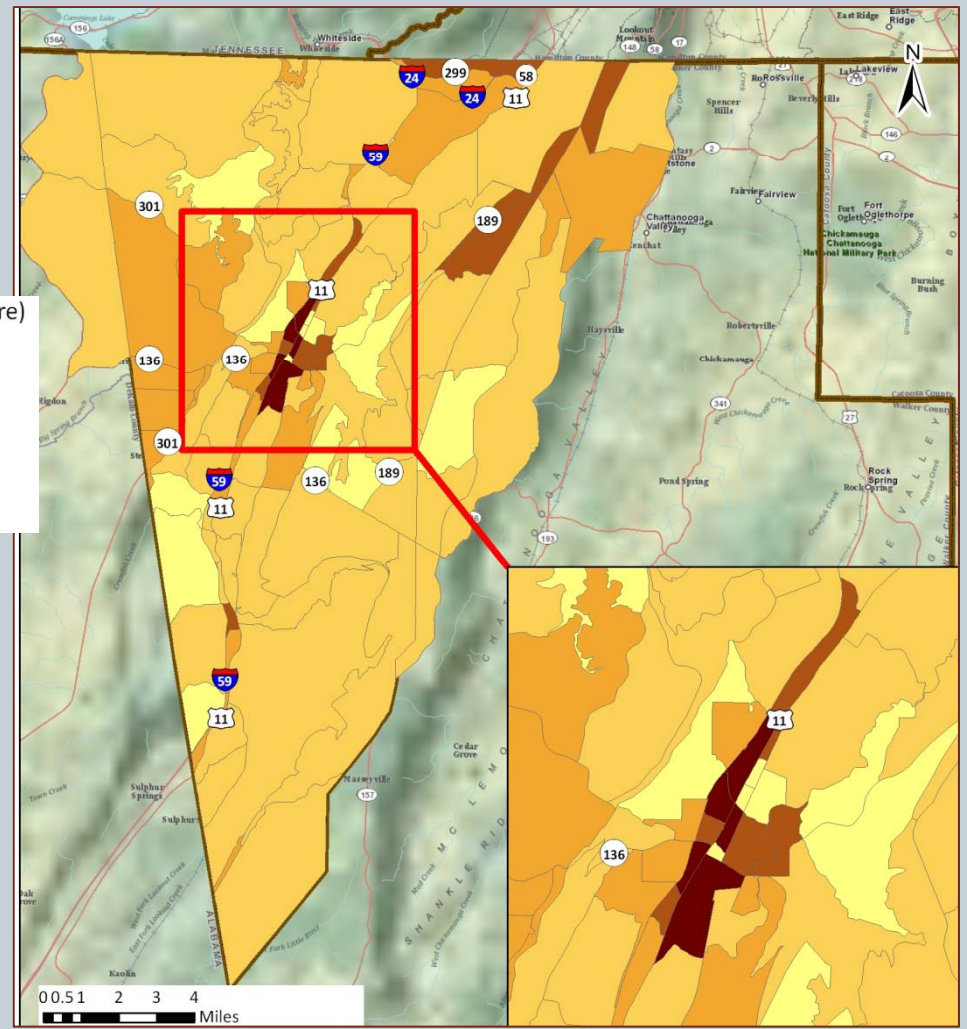
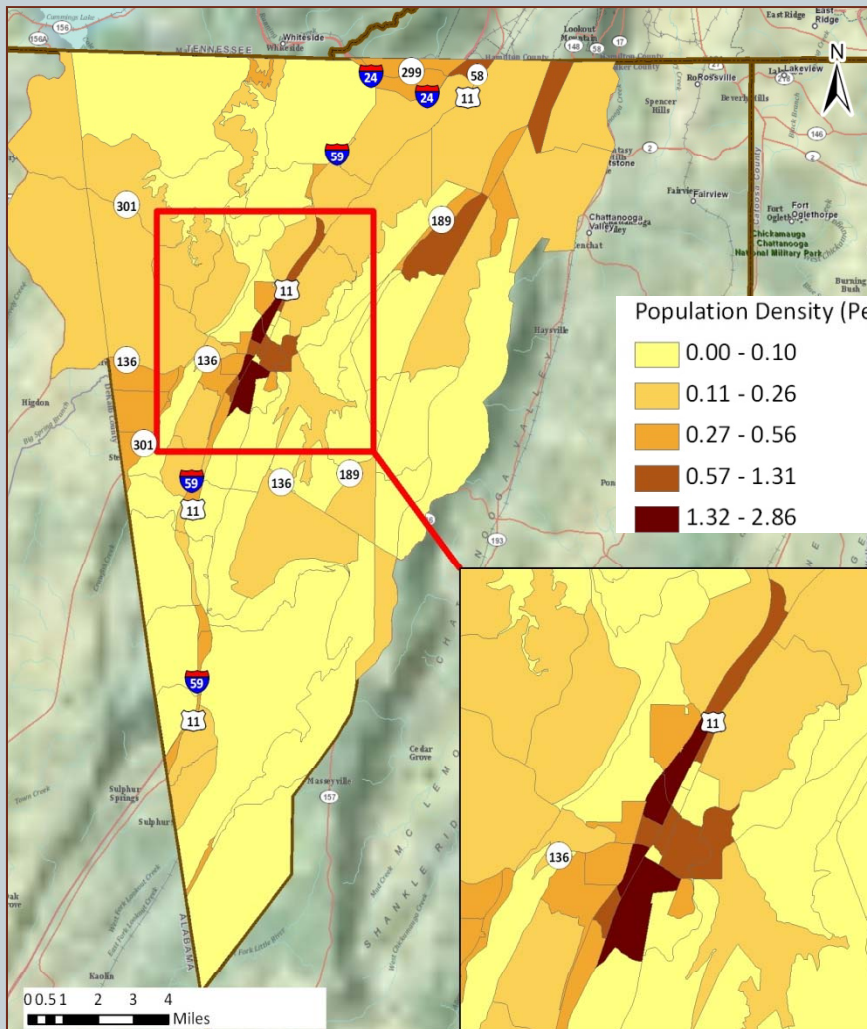
Employment Category	2007	2020	2030	2040
Retail	592	723	821	949
Service	1,792	2,027	2,301	2,660
Manufacturing	958	1,199	1,361	1,573
Wholesale	25	35	39	45

Source: Georgia Department of Labor, Labor Profile 2007

Population Density

Base Year 2007

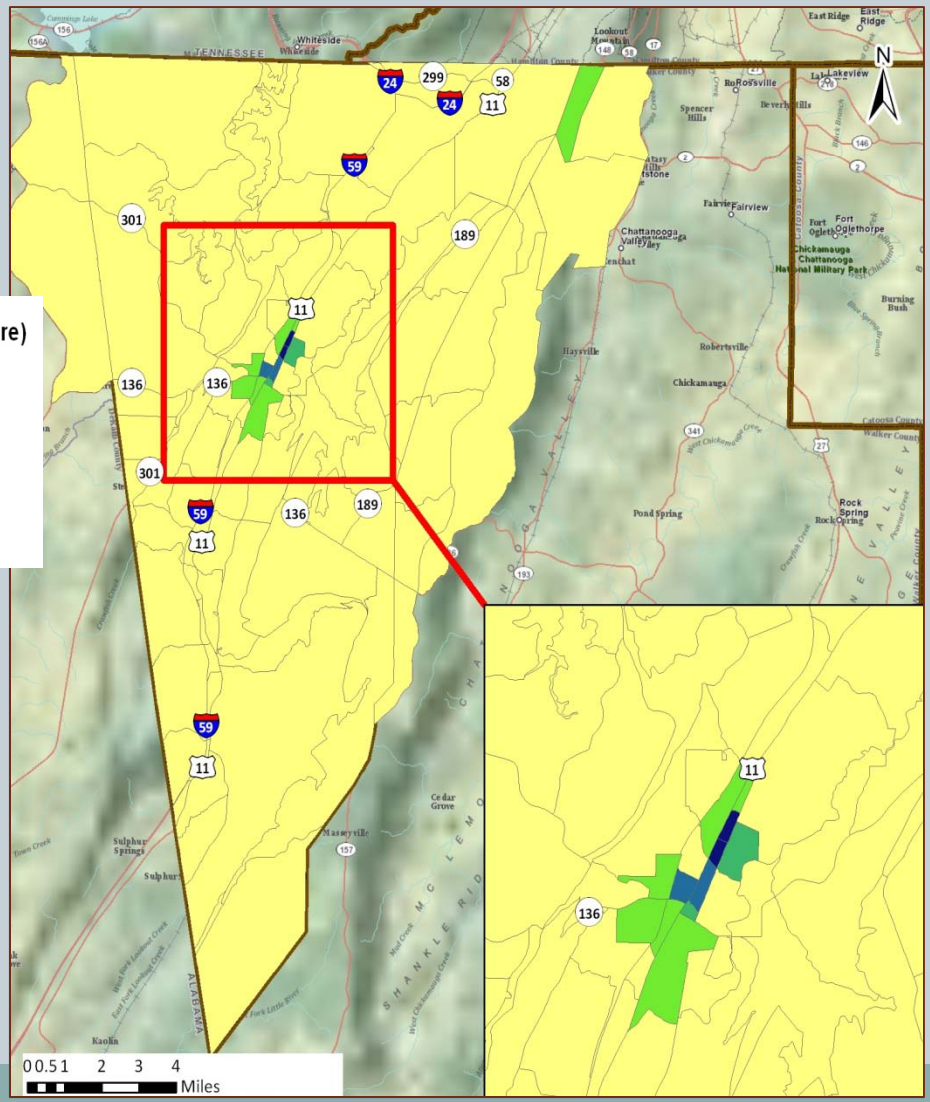
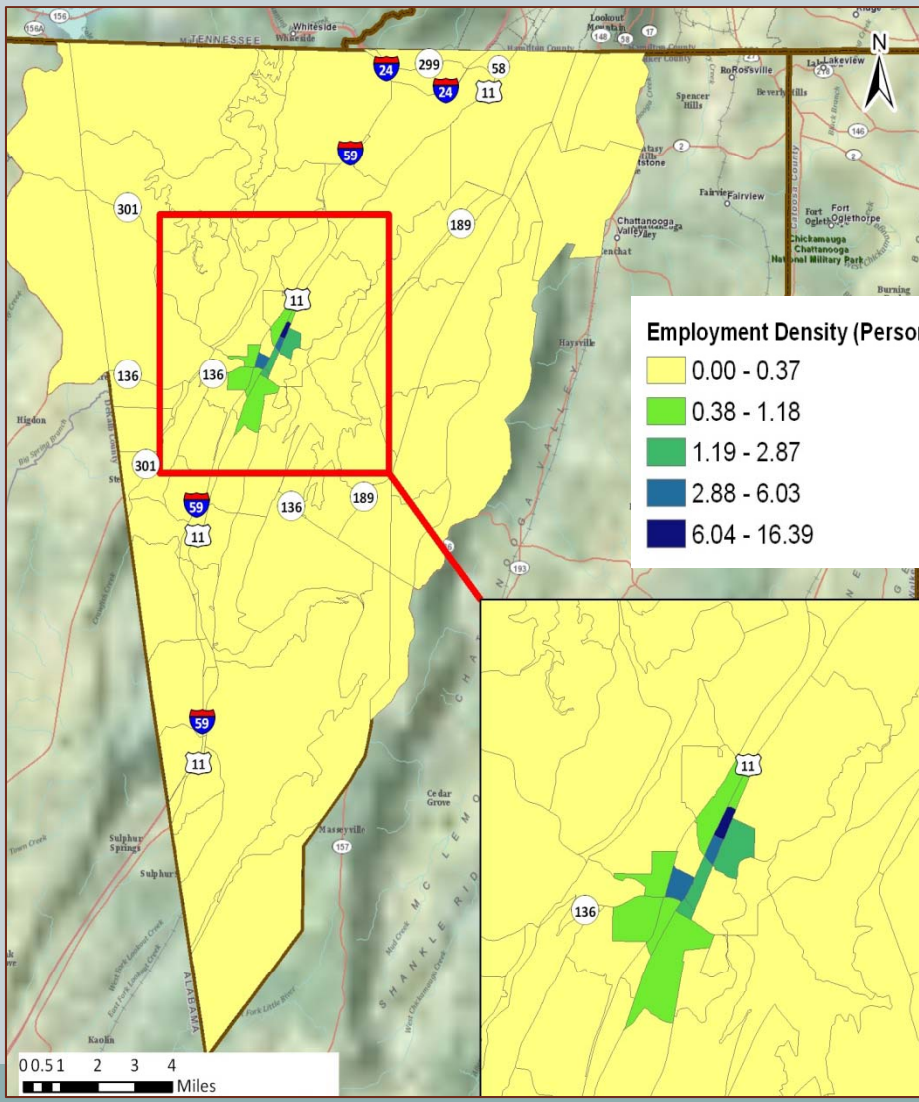
Horizon Year 2040



Employment Density

Base Year 2007

Horizon Year 2040

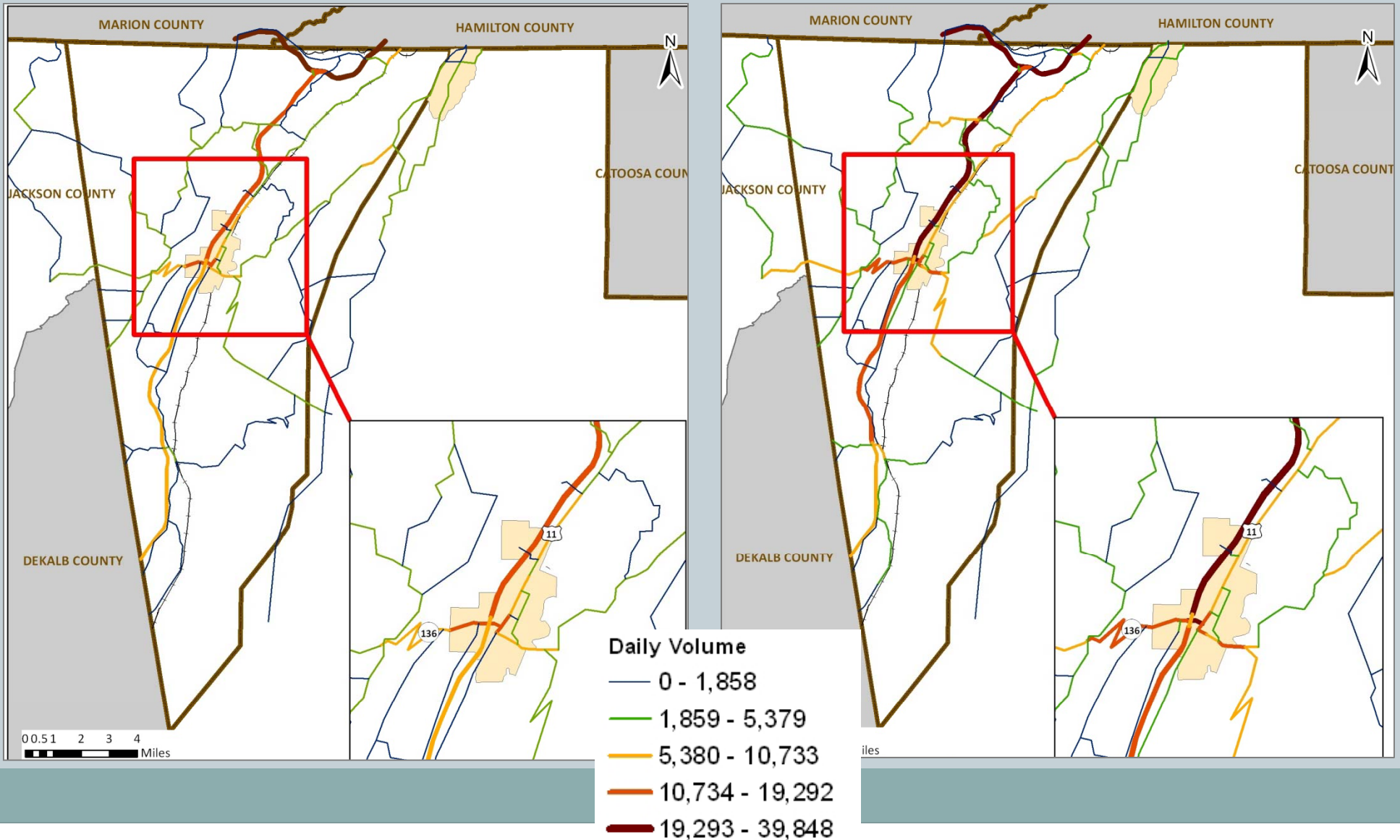


Traffic Volumes

16

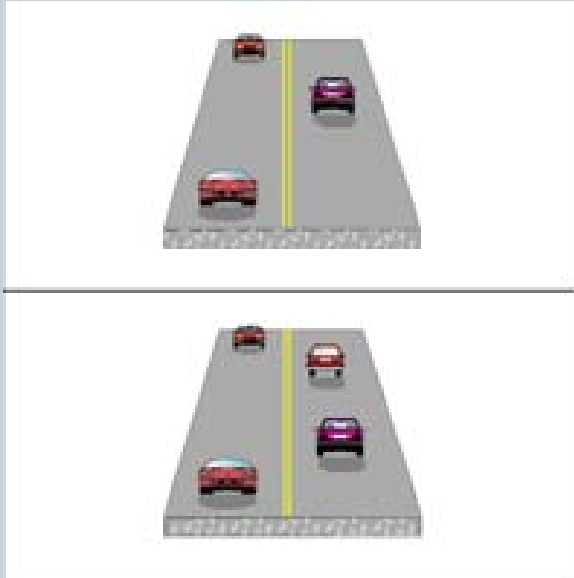
Base Year 2007

Horizon Year 2040

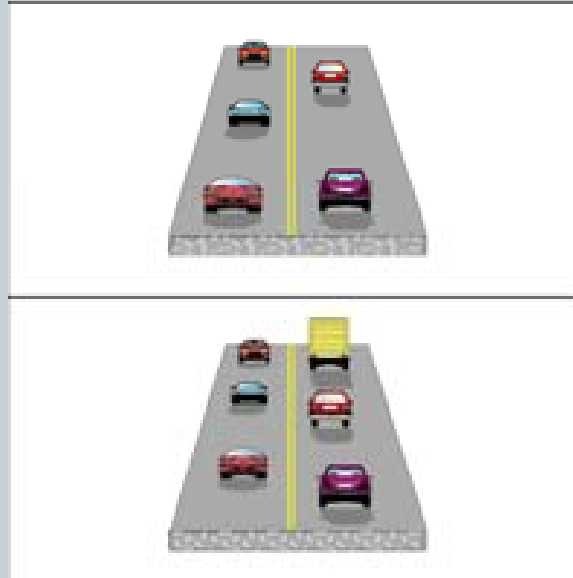


Visualizing Level of Service

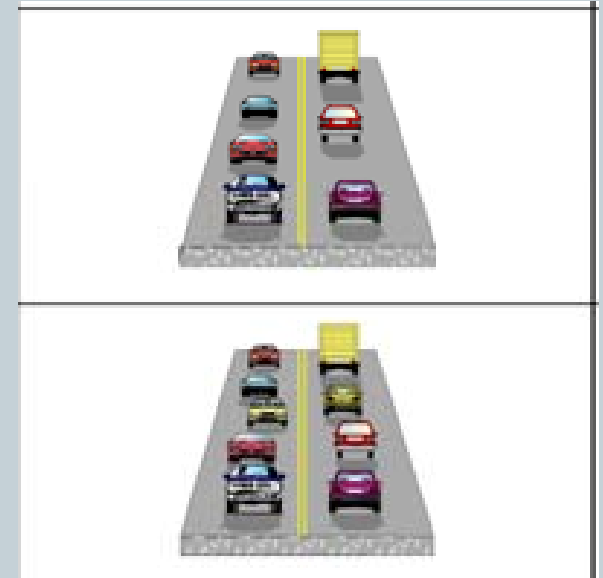
17



**Uninterrupted
Traffic Flow**



**Minor
Interruptions /
Near Capacity**

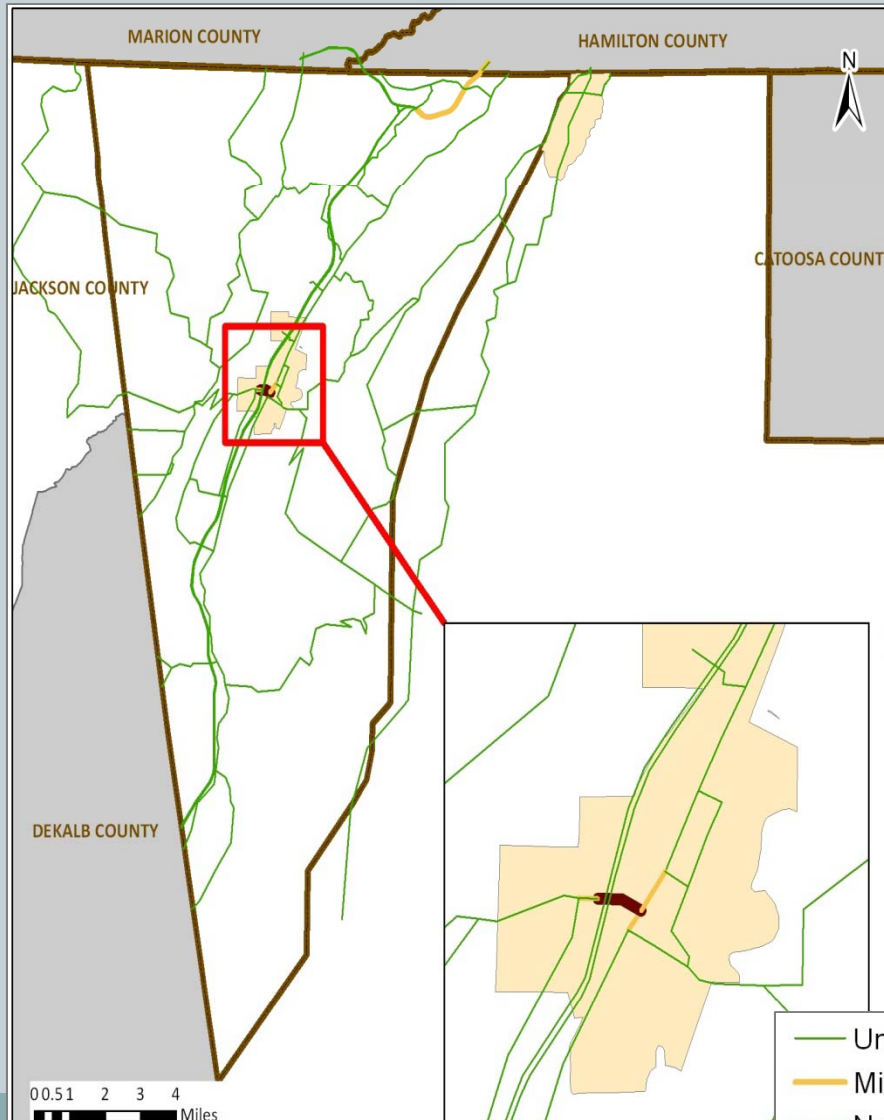


**Congested /
At Capacity**

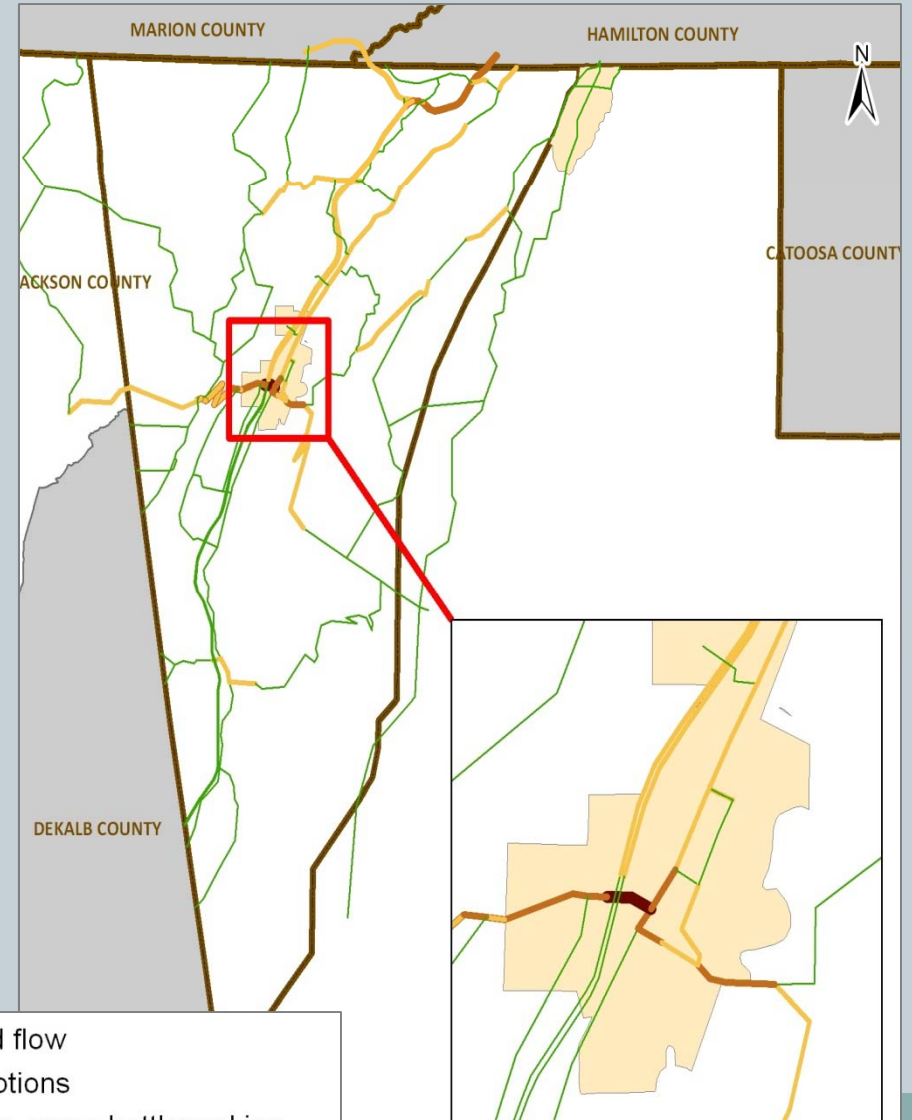
Model Results: Level-of-Service

18

Base Year 2007



Horizon Year 2040



- Uninterrupted flow
- Minor interruptions
- Near Capacity, some bottlenecking
- At capacity or congested

Source: RS&H Team

Initial Recommendations List

(See Handouts)

19

- **Includes Planned / Programmed Projects**
 - Short-Range (2011 – 2014)
 - Long-Range (after 2014)
- **Preliminary Recommendations**
 - Based Upon List of Issues Identified from Advisory Panel and County/City
 - Each Issue Either Recommended / Not-Recommended for Further Consideration



DADE COUNTY MULTIMODAL TRANSPORTATION STUDY



OUTREACH UPDATE

Outreach To Date

21

- *Chattanooga Times Free Press*, Interview/Article
- Project Websites Launched
 - GDOT's Website (www.dot.ga.gov/dadecounty)
- Advisor Panel Meeting #1 (11-18-10)



DADE COUNTY MULTIMODAL TRANSPORTATION STUDY



NEXT STEPS AND SCHEDULE

Next Steps

23

Technical Tasks

- Develop and Analyze Scenarios
- Complete Travel Demand Analysis
- Finalize Project Needs List and Develop Cost Estimates
- Develop Draft Prioritized Plan
- Present Draft Plan to Advisory Panel at Meeting #3



Current and Future Outreach

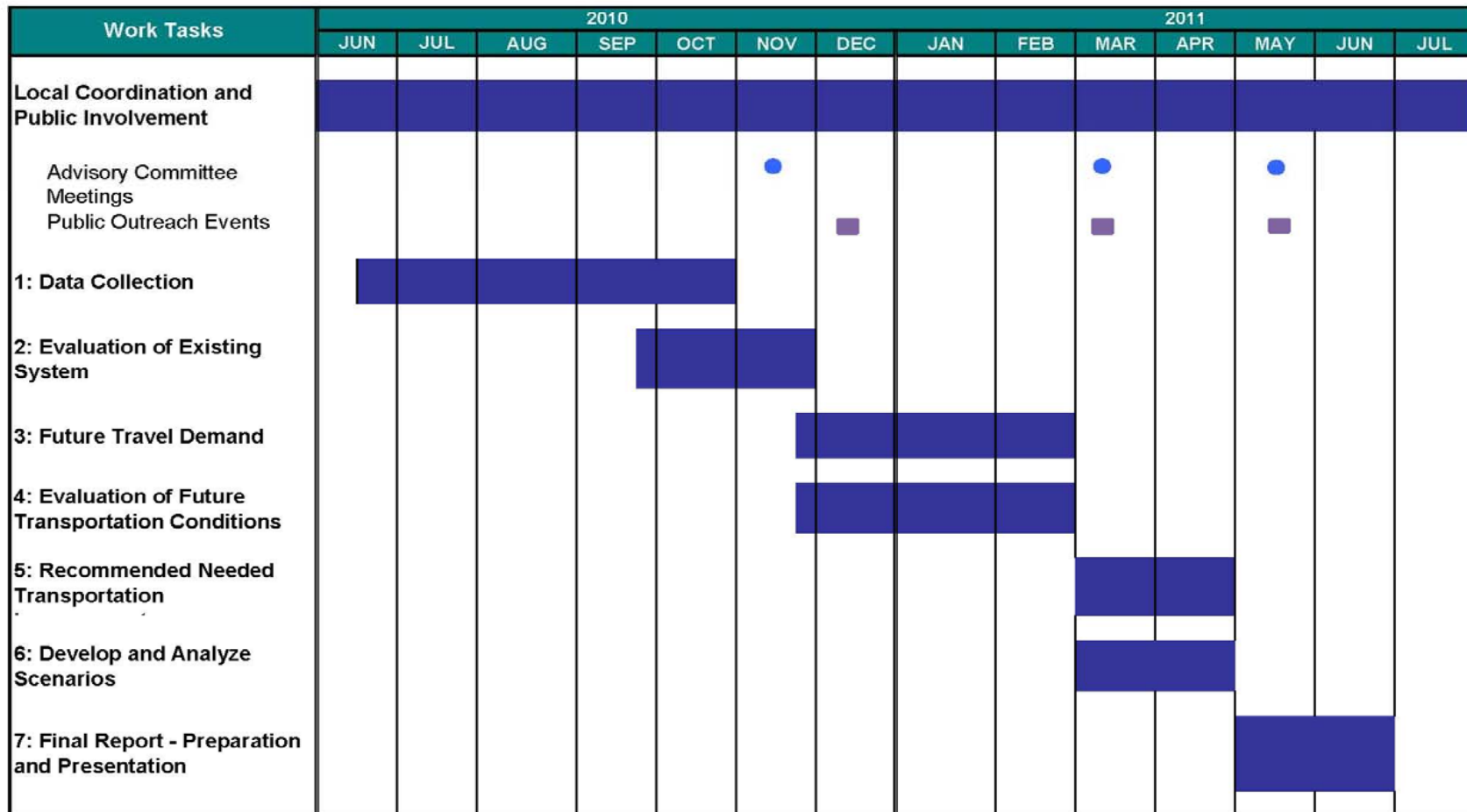
24

- Advisor Panel Meeting #2
- Public Outreach Event #2
 - Tonight's County Commission Meeting
 - Table Outside Meeting to Receive Input from Public
- Media Coverage
 - *Dade Sentinel*
 - *Mountain-Valley Independent*
 - *Chattanooga.com*
 - *The Chattanooga Times Free Press*
- Advisory Panel Meeting #3 (May 2011)
- Public Outreach Event #3, State of Dade Festival (May 21, 2011)



Project Schedule

25



Legend

- Advisory Committee Meetings ●
- Public Outreach Event ■

For More Information

26

Contact Information:

Steve Coté, PE, AICP
Reynolds, Smith and Hills, Inc. (RS&H)
678-528-7220
steve.cote@rsandh.com

Steve Walker
Project Manager
Georgia Department of Transportation
404-631-1789
stwalker@dot.ga.gov

