

COMPLEX AND CONNECTED

THE Leake Site's three mounds weren't the only features important to the people who lived here.

Historic photographs and documents talk about a cave feature, an "Indian Fort," and the "Shaw Mound." All three of these features were destroyed by development and cut off from the Leake Site.

Archaeologists have studied what little information there is about these features and believe that they were important locations to the Leake Site's inhabitants. Not only are they all close to one another, but they seem to have been made or used around the same time.

Many groups, including various agencies, tribes and communities are working hard to protect the Leake Site from further damage. The more we lose, the less we'll know.

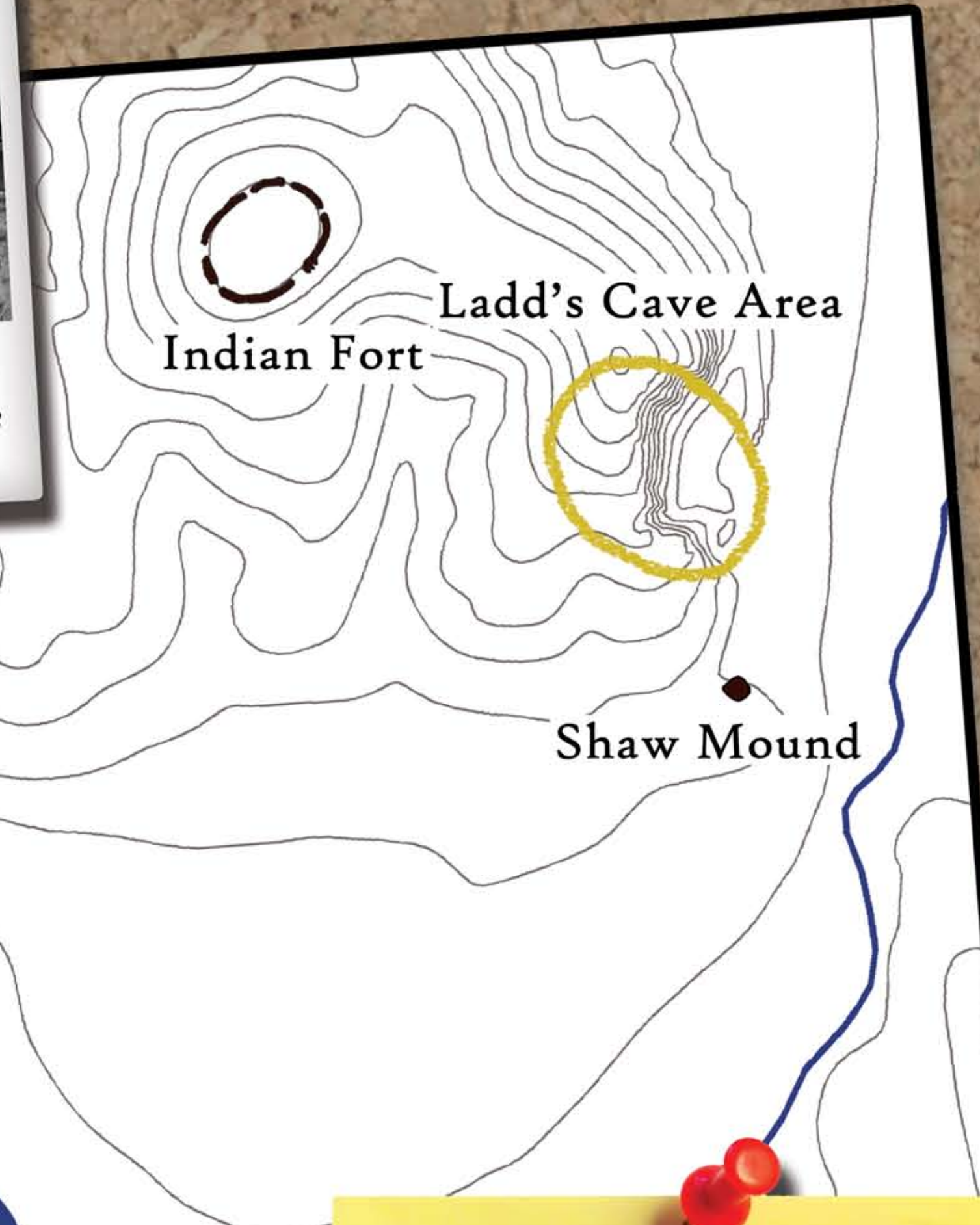


Scan this code with your smart phone to unlock additional content like videos and podcasts!



Courtesy of Georgia Archives, RG 50-2-33, mmg21-2017
The man in white is a National Park Service archaeologist. Here he's taking notes while Indian Fort is dismantled.

INDIAN FORT
This feature at the top of Ladd's Mountain was a circular stone wall with several openings. It got the name "Indian Fort" because it was originally believed to be a defensive wall.
Archaeologists aren't sure why Indian Fort was built or what it was used for, but they speculate that it wasn't for protection because it has too many openings.



LADD'S CAVE
This cave was destroyed by mining operations and so now only exists in written accounts. But when the cave was explored in the 1880s the remains of animals and at least one human were found inside.
How do you think the people at the Leake Site might have used this cave?

SHAW MOUND
Human remains and numerous artifacts were discovered buried inside this stone mound. Who was buried there? Archaeologists think it may have been an important member of the Leake community.
Like Indian Fort and Ladd's Cave, this feature no longer exists. It was taken apart out of curiosity and so that the stones could be sold.



Courtesy of Georgia Archives, RG 50-2-33, mmg21-1987
This photograph was taken from inside the sunken center of the mound. Notice the stones that made up the mound?



Courtesy of Georgia Archives, RG 50-2-33, mmg01-0052
This photograph of Mound B is the only existing ground-level image of any of the Leake Site mounds.



Courtesy of Georgia Archives, RG 50-2-33, mmg21-1988
Using this man's height as a scale gives you an idea of how big this mound was.