



STATE FUNDED PROGRAMS

Mike Dover, P.E.
Deputy Commissioner
July 19, 2017

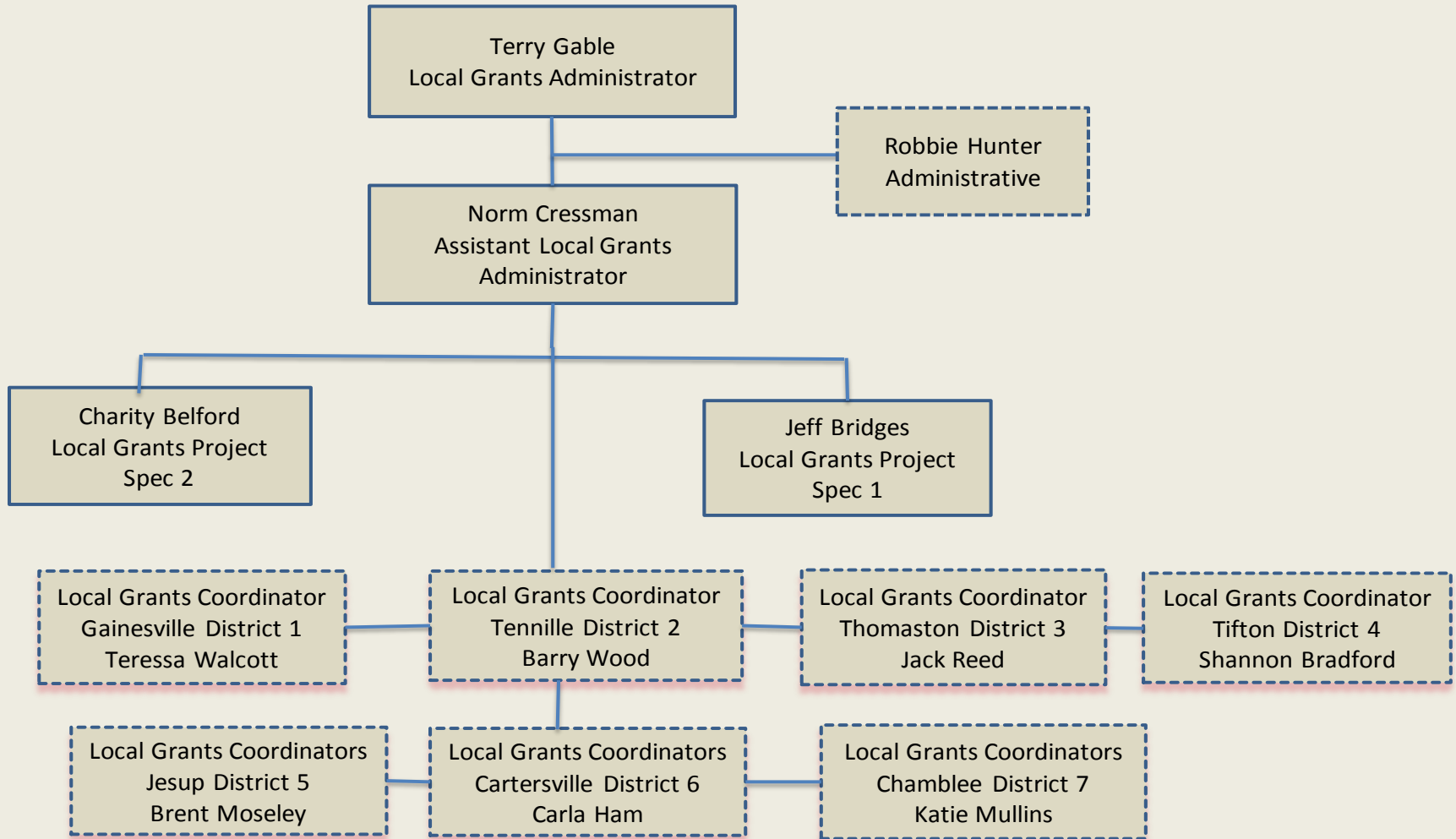


Agenda

- **Local Grants Office and Districts**
- **LMIG Program**
- **Off System Safety Program**
- **Quick Response Program**
- **Safety & Access Program**



LOCAL GRANTS OFFICE





Local Grants Office Roles & Responsibilities

- Administers programs, authorizes funding and sets policies
 - Local Maintenance & Improvement Grant (LMIG) Program
 - Federal funded Off-System Safety (OSS) Program
 - State funded Off-System Safety (OSS) Program
 - Quick Response Program (QR)
 - Safety & Access Program



District Local Grants Coordinators Roles & Responsibilities

- Serves as a Liaison to local governments within each district and the Local Grants Office
 - Process applications & answer questions
 - Coordinate with locals & provide estimates
 - Submit concepts and prepare contract documents for bids
 - Assist with identifying and selecting local projects
 - Audit previous years projects



LMIG Program

➤ The Local Road System

- 107,000 centerline miles local roads
- 1,521 posted bridges on the local road system

➤ FY 2017 LMIG Program

- \$165 million allocated for the 2017 program
- 30% increase over 2016

➤ FY 2018 LMIG

- \$179 million allocated for the 2018 Program
- 8% increase over 2017
- Notification letters mailed to all counties and cities-
June 2017



Annual LMIG Process

- Mileage and population data are collected and reviewed
- Allocations are determined for all 687 counties and cities
- LMIG notifications letters are mailed out in June
- All Grant applications are due by January 1st
- Payment authorized and paid within 2 weeks of approval

LMIG Project



Douglas County - Resurfacing continues to be the MAIN focus of local government needs

LMIG Project



Gwinnett County - Cherry Hill Road

LMIG Project



Seminole County – Sam Frasier Road

LMIG joined with TIA Project



Bleckley County - Combined TIA funds, LMIG funds, discretionary funds and county forces to replace this bridge

LMIG Project



Barrow County - Adding turn lane to improve operations and safety

- **Fatalities on Georgia roads are up 33% over the past two years**
 - **Over 1/3 of the fatalities occur on the local road system**
 - **In 2016 there were 1,559 fatalities**



65% involved failure to maintain lane



50% involved single vehicle hitting a fixed object



15% involved pedestrians fatalities



Off System Safety (OSS) Program

- Federal Program Developed in 2005 as part of the Safety Action Plan (SAP)
- Projects are selected by the Districts using a data driven approach when possible (crash reports, ADT, type route etc.)
- Program focuses on low-cost countermeasures to improve safety
- Work includes striping, sign replacement, rumble strips, raised pavement markers and minor intersection improvements



Federal Funded OSS Program

- Projects are managed and let by GDOT
- 100% Federally Funded
- Follows GDOT letting schedule and federal process

- FY 2017 Program
 - Program allotted \$8.2 million
 - Total number of projects authorized 26
 - Total funds authorized \$6.6 million
 - Let to construction in June and August 2017
 - June Letting- 16 awards at 475 locations

- FY 2018 Program
 - Program was allotted \$7 million
 - Total projects selected 25
 - Will be let May and June of 2018



State Funded OSS Program

- First rolled out in 2016 as an option for local governments
- Projects are managed and let by the local government
- Follows the same process and procedures as a normal LMIG project
- FY 2016 Program
 - Total 207 projects submitted
 - 134 projects selected that totaled \$29 million
 - Total state funds \$13.5 million
 - Total local government funds \$15.5 million
- FY 2017 Program
 - Total 183 projects submitted
 - 173 projects selected that totaled \$24.5 million
 - Total state participation \$10.5 million
 - Local government match \$14 million

Off System Safety Project



Lowndes County - New advanced sharp curve signs on Val-Tech Road



St. Mary's – New centerline and edge line striping on Cambray Circle.

Off System Safety Projects



Bacon County – 2' foot shoulder widen with new edge line & centerline striping on Cumberland Road



Bryan County – 2' shoulder widening including edge line and centerline striping on Harris Trail Road

Off System Safety Projects



Appling County - New centerline striping, edge line striping and signs on Miles Chapel Church Rd.



Douglas County - New centerline striping, edge line striping and signs on Mount Vernon Rd.



Quick Response Program

- A mechanism to quickly identify, approve and construct small traffic operational projects on the state route system.
- Identify needed projects, solicit 3 bids and then award the project to the lowest bidder with state funds
- O.C.G.A. 32-2-61 allows GDOT to negotiate projects up to \$200,000
- 300 projects approved in FY15, 16 & 17 for a total of \$42 million
- 12.4% DBE awarded to DBE Contractors
- At least 1 DBE contractor is contacted when soliciting bids.



Quick Response Program Funding History

Funding Period	Amount
Fiscal Year 2015	\$1,000,000
Fiscal Year 2016	\$19,000,000 (HB 170)
Fiscal Year 2017	\$22,000,000
Fiscal Year 2018	\$22,000,000

Quick Response Program

- Types of operational improvement projects may include, but are not limited to the following:
 - Turn Lanes
 - Pedestrian accommodations
 - Median removal and turn lane extension
 - Intersection improvements
 - Striping
 - RCUT (Restricted Crossing U-Turn)

Quick Response Project



Spalding County - R-Cut on SR 3 at
Lucky Street in Griffin, Ga

Quick Response Project



Tift County - Right turn lane on US 319/SR 25 at New River Church Road.

Quick Response Project



Clay County – Installation of a northbound right turn lane on SR 39 @ SR 266/Coleman Road.

Quick Response Project



Carroll County/City of Whitesburg – Roundabout at
SR 5 and SR 16.

Safety & Access Program

- Rolled out in December 2016 to local governments primarily through their Regional Commissions
- Application program-follow LMIG process
- Managed by Traffic Operations Office and Local Grants Office
 - Work includes sidewalks, crosswalks, curb ramps, paved trails, median refuge islands, pedestrian lighting, beacons, bicycle lanes, & pavement markings.
- FY 2017 received over \$10 million of requests from locals
- Approved 16 Projects for a total of \$2 million



Questions?

