



June 2019 Letting Report

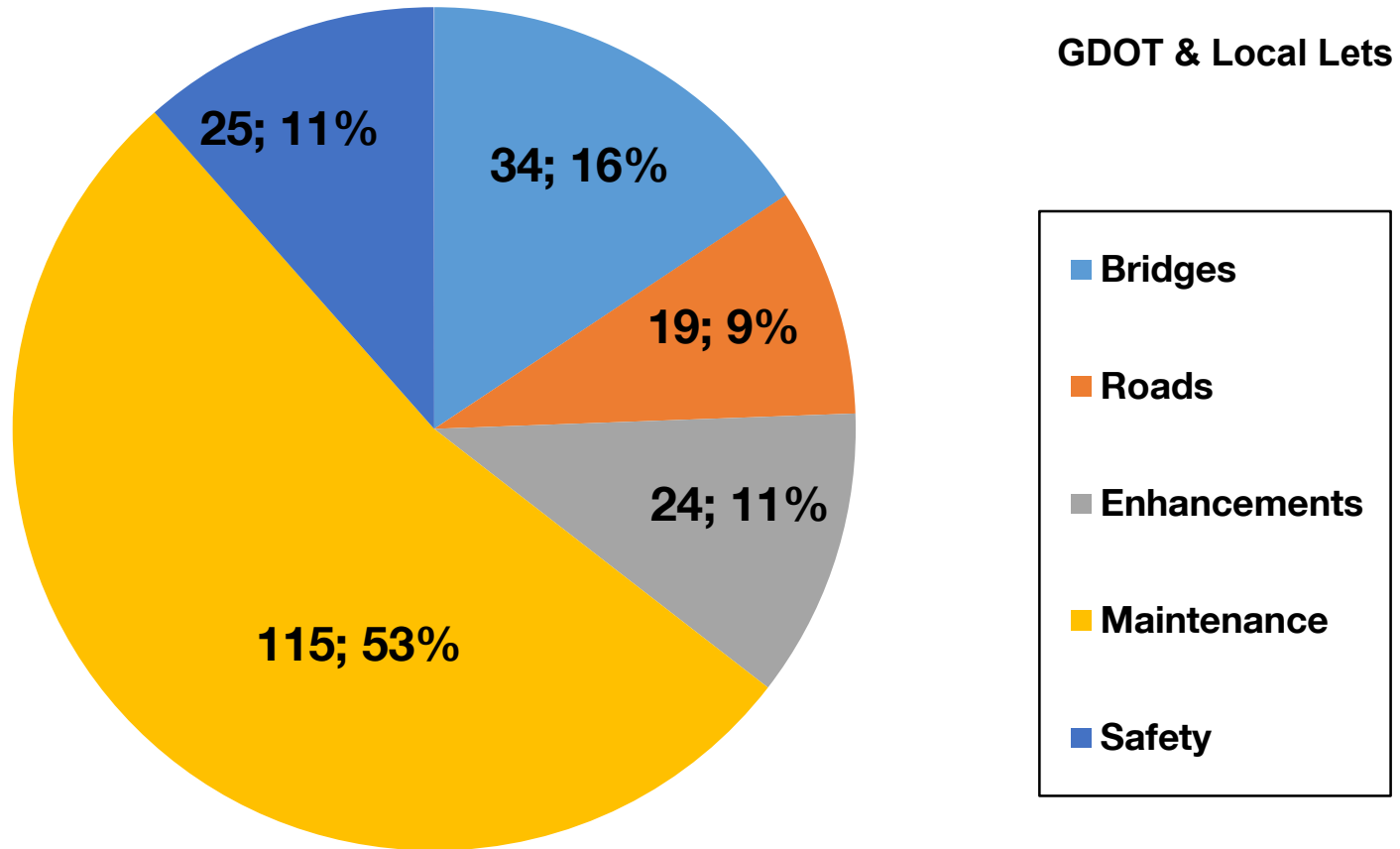
Albert V. Shelby, III
Director of Program Delivery
May 16, 2019



Fiscal Year 2019 Letting Report

Number of Projects Let in FY 2019

(Contractor Low Bid Award Data)



Total = 217

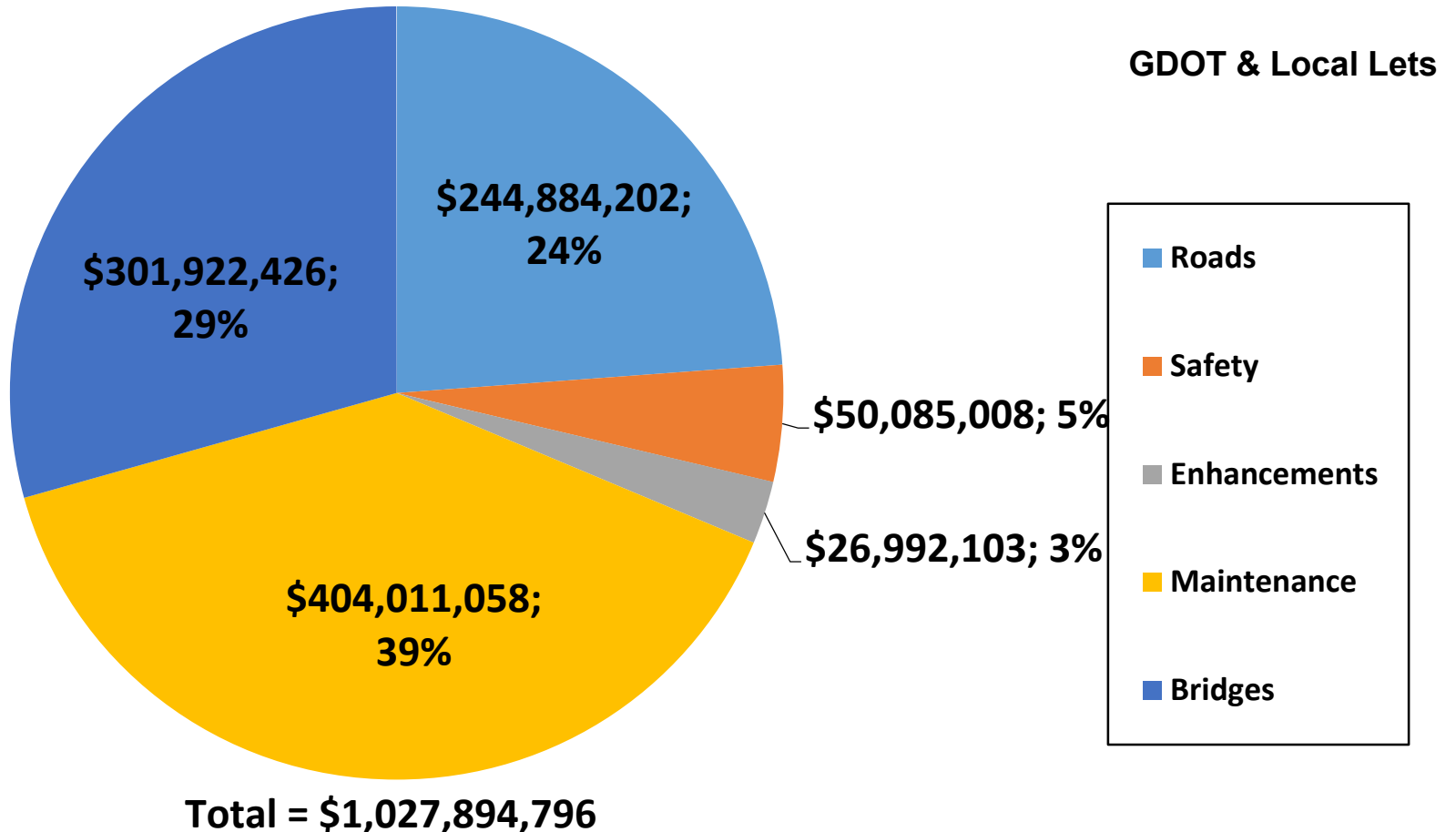
Does not include LMIG Projects

*As of May 1, 2019
Source Bidding Administration*

Fiscal Year 2019 Letting Report

Dollar Amount of Projects Let in FY 2019

(Contractor Low Bid Award Data)



Does not include LMIG Projects

As of May 1, 2019
Source Bidding Administration

April 2019 Letting Results

Summary	Presented to GDOT Board (Includes Adjustments)	Low Bid (Awarded to Contractor)	Low Bid w/Adjustments (Total Project Obligation)
GDOT Let (Project Count)	18	18	18
GDOT Let (Dollars)	\$120,297,394	\$128,508,608	\$135,396,805
Local Let (Project Count)	11	N/A Local Let	N/A Local Let
Local Let (Dollars)	\$16,008,988	N/A Local Let	N/A Local Let

*Low Bid Award Amount includes the Deferred and Awarded projects.
Does not include Engineering and Inspection, Utilities, Liquid AC, Incentives, LMIG and Rejected projects.

GDOT and Local Let Projects

June 2019 Letting

GDOT and Local Let Projects

June 2019 Letting

Project ID	Description	Primary County	Primary Work Type	Congressional District	Project Let By	Project Sponsor
0016124	CASON RD @ 1 LOC - OFF-SYSTEM SAFETY IMPROVEMENTS - HRRR	Pierce	Shoulder Work	001	DOT	GDOT
M005297	SR 38 CONN FROM SR 119 TO SR 38/US 84	Liberty	Resurface & Maintenance	001	DOT	GDOT
M005395	I-95 @ 5 LOCS - BRIDGE PRESERVATION	Camden	Bridges	001	DOT	GDOT
M005771	SR 520 FROM W OF OLD WAYNESVILLE ROAD TO GLYNN COUNTY LINE	Brantley	Resurface & Maintenance	001	DOT	GDOT
M005775	SR 94 FROM 0.10 MI E OF SR 89 TO FLORIDA STATE LINE	Clinch	Resurface & Maintenance	001	DOT	GDOT
0009861	SR 11/SR 49 @ ROCKY CRK & OVERFLOW & @ TOBESOFKEE CRK & OVERFLOW	Bibb	Bridges	002	DOT	GDOT
0010611	SR 93; CS 704/W RAILROAD ST & CS 733/E RAILROAD ST @ 3 LOCS	Mitchell	TE-Bike/Ped Facility	002	LOC	Pelham
0016060	OFF-SYSTEM SAFETY IMPROVEMENTS @ 14 LOCS IN LEE COUNTY-HRRR	Lee	Signing	002	DOT	GDOT
M005220	SR 112 FROM E OF CS 806/BAKER PLACE TO WORTH COUNTY LINE	Mitchell	Resurface & Maintenance	002	DOT	GDOT
M005607	SR 520 FROM SR 27 TO WEBSTER COUNTY LINE	Stewart	Resurface & Maintenance	002	DOT	GDOT

GDOT and Local Let Projects

June 2019 Letting

Project ID	Description	Primary County	Primary Work Type	Congressional District	Project Let By	Project Sponsor
M005758	SR 112 FM GRADY COUNTY LINE TO E OF CS 806/BAKER PLACE	Mitchell	Resurface & Maintenance	002	DOT	GDOT
M005823	SR 96 FROM TALBOT COUNTY LINE TO CS 571/WEST SUMTER STREET	Taylor	Resurface & Maintenance	002	DOT	GDOT
0016344	OFF-SYSTEM SAFETY IMPROVEMENTS @ 34 LOC IN TROUP COUNTY-HRRR	Troup	Signing	003	DOT	GDOT
M005247	SR 18 FROM SR 109 TO PIKE COUNTY LINE	Meriwether	Resurface & Maintenance	003	DOT	GDOT
0015748	NORTH CLARENDON AVE @ 1 LOC - OFF-SYSTEM SAFETY IMPROVEMENTS	DeKalb	Signing	004	DOT	GDOT
0010721	PANOLA MOUNTAIN GREENWAY TRAIL	Henry	TE-Bike/Ped Facility	004, 013	LOC	Henry County
0010639	ATLANTA BELTLINE FROM CS 2009/IRWIN ST TO CS 520/MONROE DR	Fulton	TE-Bike/Ped Facility	005	LOC	Atlanta Development Authority
0013209	I-20 @ 1 LOC & SR 139 @ 8 LOCS IN FULTON COUNTY	Fulton	Signals	005	DOT	GDOT
0016333	OFF-SYSTEM SAFETY IMPROVEMENTS @ 13 LOCS IN COLLEGE PARK	Fulton	Pavement Markings	005	DOT	GDOT
M005810	SR 237 FROM SR 141 TO SR 9	Fulton	Resurface & Maintenance	005, 011	DOT	GDOT

GDOT and Local Let Projects

June 2019 Letting

Project ID	Description	Primary County	Primary Work Type	Congressional District	Project Let By	Project Sponsor
M005709	I-285 FROM WEST END OF AIRPORT TUNNEL TO SR 14/US 29	Fulton	Resurface & Maintenance	005, 013	DOT	GDOT
0015766	I-985 FROM I-85/GWINNETT TO N OF SR 365/HALL	Hall	ITS	007, 009	DOT	GDOT
M004960	SR 127 FROM SR 11BU TO CS 843/KINGS CHAPEL ROAD	Houston	Resurface & Maintenance	008	DOT	GDOT
M005251	SR 32 FROM WORTH COUNTY LINE TO SR 112	Turner	Resurface & Maintenance	008	DOT	GDOT
M005780	SR 27 FROM N OF JIM HAMMOCK DRIVE TO S OF TO HALEY ROAD	Telfair	Resurface & Maintenance	008	DOT	GDOT
M005820	SR 11 FROM SR 230 TO 0.16 MI S OF SR 224	Pulaski	Resurface & Maintenance	008	DOT	GDOT
M005888	SR 19 FROM 0.13 MI W OF OLD MACON ROAD TO TWIGGS COUNTY LINE	Laurens	Resurface & Maintenance	008, 012	DOT	GDOT
0009679	SPOUT SPRINGS ROAD FROM I-985 TO UNION CIRCLE - PHASE I	Hall	Widening	009	DOT	Hall County
0010195	W CLEVELAND BYP ALONG CR 68 FM W OF SR 11 TO SR 75 - PH III	White	Widening	009	DOT	GDOT
0010212	SR 53 WB @ CHATTAHOOCHEE RIVER	Hall	Bridges	009	DOT	GDOT
0010688	SR 2/SR 515 FROM SR 66 TO CS 354/WALKER STREET	Towns	TE-Bike/Ped Facility	009	LOC	Young Harris

GDOT and Local Let Projects

June 2019 Letting

Project ID	Description	Primary County	Primary Work Type	Congressional District	Project Let By	Project Sponsor
0016006	OFF-SYSTEM SAFETY IMPROVEMENTS @ 15 LOC IN HABERSHAM CO-HRRR	Habersham	Signing	009	DOT	GDOT
M005587	SR 115 FROM LUMPKIN COUNTY LINE TO SR 11 SO	White	Resurface & Maintenance	009	DOT	GDOT
M005737	SR 17 FROM N OF SR 184/STEPHENS TO N OF SR 365/HABERSHAM	Stephens	Resurface & Maintenance	009	DOT	GDOT
M005791	SR 282 FM 0.20 MI E OF CR 17/OLD TAILS CREEK RD TO SR 515	Gilmer	Resurface & Maintenance	009	DOT	GDOT
M005911	SR 53 FM SR 183/DAWSON TO S OF CHESTATEE HEIGHTS RD/FORSYTH	Dawson	Resurface & Maintenance	009	DOT	GDOT
0016330	OFF-SYSTEM SAFETY IMPROVEMENTS @ 25 LOCS IN CLARKE COUNTY	Clarke	Signing	009, 010	DOT	GDOT
0015765	I-575 FROM CS 698/RIDGEWALK PKWY/CHEROKEE TO SR 372/PICKENS	Cherokee	ITS	009, 011	DOT	GDOT
0006463	SR 15 @ 3 LOCS & SR 24 @ 2 LOCS - PEDESTRIAN UPGRADES	Washington	Pedestrian Crossings	010	DOT	GDOT
0010698	LINCOLN TON DOWNTOWN STREETSCAPES @ 2 LOCS - PHASE III	Lincoln	TE-Bike/Ped Facility	010	LOC	Lincolnton
0015764	CR 16/PITTS CHAPEL ROAD @ PITTMAN BRANCH	Jasper	Bridges	010	DOT	GDOT
0016004	OFF-SYSTEM SAFETY IMPROVEMENTS @ 15 LOCS IN BARROW CO - HRRR	Barrow	Signing	010	DOT	GDOT

GDOT and Local Let Projects

June 2019 Letting

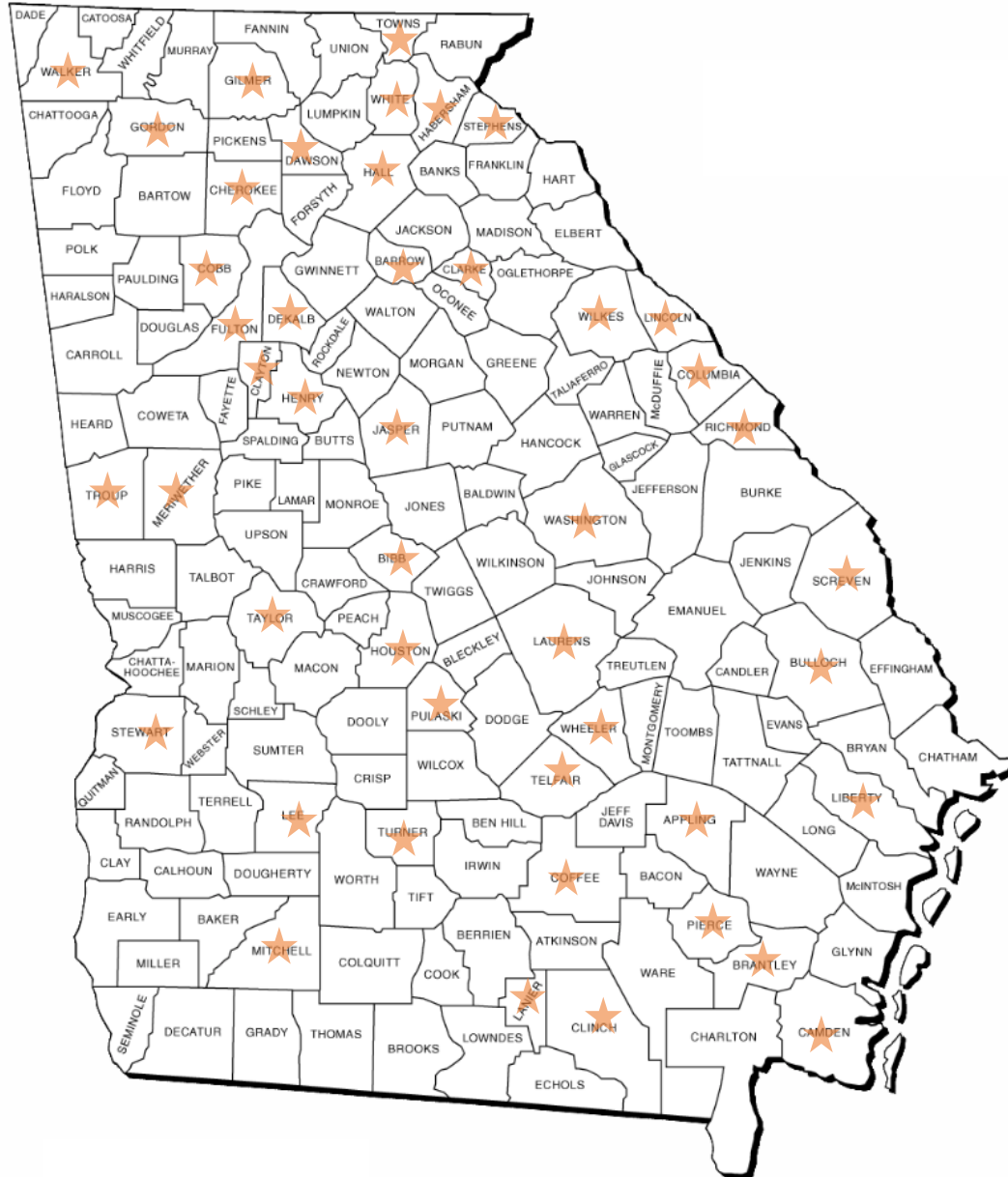
Project ID	Description	Primary County	Primary Work Type	Congressional District	Project Let By	Project Sponsor
0016051	OFF-SYSTEM SAFETY IMPROVEMENTS @ 12 LOCS IN WILKES CO - HRRR	Wilkes	Signing	010	DOT	GDOT
0016014	OFF-SYSTEM SAFETY IMPROVEMENTS @ 25 LOCS IN COLUMBIA COUNTY	Columbia	Signing	010, 012	DOT	GDOT
0010706	CR 171/BIG SHANTY FM CHASTAIN MEADOWS PKWY TO BELLS FERRY RD	Cobb	TE-Bike/Ped Facility	011	LOC	Cobb County
M004935	SR 5 CONN FROM SR 3 TO I-575	Cobb	Resurface & Maintenance	011	DOT	GDOT
0011678	SR 32 @ 17 MILE RIVER APPROX 3 MI E OF DOUGLAS	Coffee	Bridges	012	DOT	GDOT
0011679	SR 32 @ OTTER CREEK APPROX 5 MI E OF DOUGLAS	Coffee	Bridges	012	DOT	GDOT
0011680	SR 32 @ BEAR CREEK APPROX 1.2 MI W OF NICHOLS	Coffee	Bridges	012	DOT	GDOT
0013687	SR 73 LOOP @ ROCKY FORD RD; @ BUTTERMILK RD & @ BASCOM RD	Screven	Intersection Improvement	012	DOT	GDOT
0015435	SR 117/US 441 BYPASS @ 4 LOCS - LIGHTING	Laurens	Lighting	012	DOT	GDOT
0015759	SR 257 @ CR 354/PINEHILL ROAD/CR 477/WALDREP ROAD	Laurens	Roundabout	012	DOT	Laurens County
M005773	SR 67/US 25 FROM N OF MILL CREEK TO JENKINS COUNTY LINE	Bulloch	Resurface & Maintenance	012	DOT	GDOT

GDOT and Local Let Projects

June 2019 Letting

Project ID	Description	Primary County	Primary Work Type	Congressional District	Project Let By	Project Sponsor
M005894	SR 4 FROM 0.07 N OF SR 10 TO CR 1408/OLIVE ROAD	Richmond	Resurface & Maintenance	012	DOT	GDOT
M005899	SR 46 FROM LAURENS COUNTY LINE TO TREUTLEN COUNTY LINE	Wheeler	Resurface & Maintenance	012	DOT	GDOT
M005799	SR 138 FM N OF CS 1167/BAMBY LANE/CLAYTON TO E OF I-75/HENRY	Clayton	Resurface & Maintenance	013	DOT	GDOT
M005856	I-285 @ 5 LOCS IN FULTON COUNTY - BRIDGE PRESERVATION	Fulton	Bridges	013	DOT	GDOT
0015744	CARTER MTN RD @ 1 LOC - OFF-SYSTEM SAFETY IMPROVEMENTS-HRRR	Gordon	Signing	014	DOT	GDOT
0015746	NICKAJACK RD @ 1 LOC - OFF-SYSTEM SAFETY IMPROVEMENTS - HRRR	Walker	Signing	014	DOT	GDOT
0016432	RUMBLE STRIPS IN DISTRICT 1 - AREA 3 & 4 - FY 2019	Appling	Rumble Strips	099	DOT	GDOT
0016433	RUMBLE STRIPS IN DISTRICT 2 - AREA 2 & 3 - FY 2019	Appling	Rumble Strips	099	DOT	GDOT
0016437	RUMBLE STRIPS IN DISTRICT 3 - AREA 2 & 4 - FY 2019	Appling	Rumble Strips	099	DOT	GDOT
0016438	RUMBLE STRIPS IN DISTRICT 3 - AREA 3 - FY 2019	Appling	Rumble Strips	099	DOT	GDOT
0016439	RUMBLE STRIPS IN DISTRICT 3 - AREA 5 - FY 2019	Appling	Rumble Strips	099	DOT	GDOT

June 2019 Projects Throughout Georgia



Safety Improvement Projects throughout Georgia

Pavement Marking/Signal Projects in Various Counties and Congressional Districts



Enhancement Projects throughout Georgia Bike and Pedestrian Projects in Various Counties and Congressional Districts



SR 11/SR 49 @ROCKY CRK &OVERFLOW & @TOBESOFKEE CRK &OVERFLOW Bridge Replacement Project in Bibb County Congressional District 2



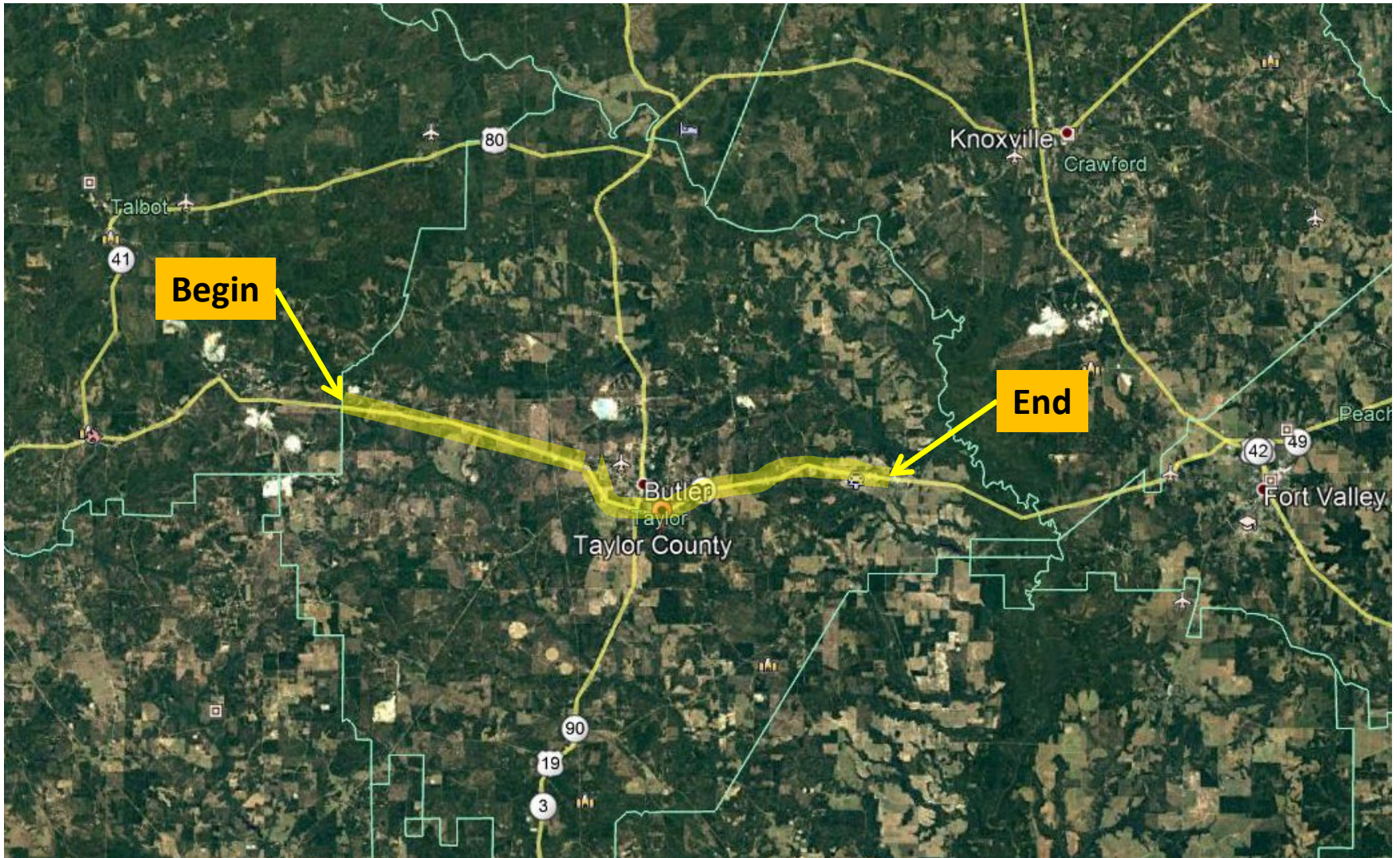
SR 11/SR 49 @ROCKY CRK &OVERFLOW & @TOBESOFKEE CRK &OVERFLOW Bridge Replacement Project in Bibb County Congressional District 2



**SR 11/SR 49 @ROCKY CRK &OVERFLOW & @TOBESOFKEE CRK &OVERFLOW
Bridge Replacement Project in Bibb County
Congressional District 2 (Continued)**



SR 96 FROM TALBOT COUNTY LINE TO CS 571/WEST SUMTER STREET Resurfacing Project in Taylor County Congressional District 2



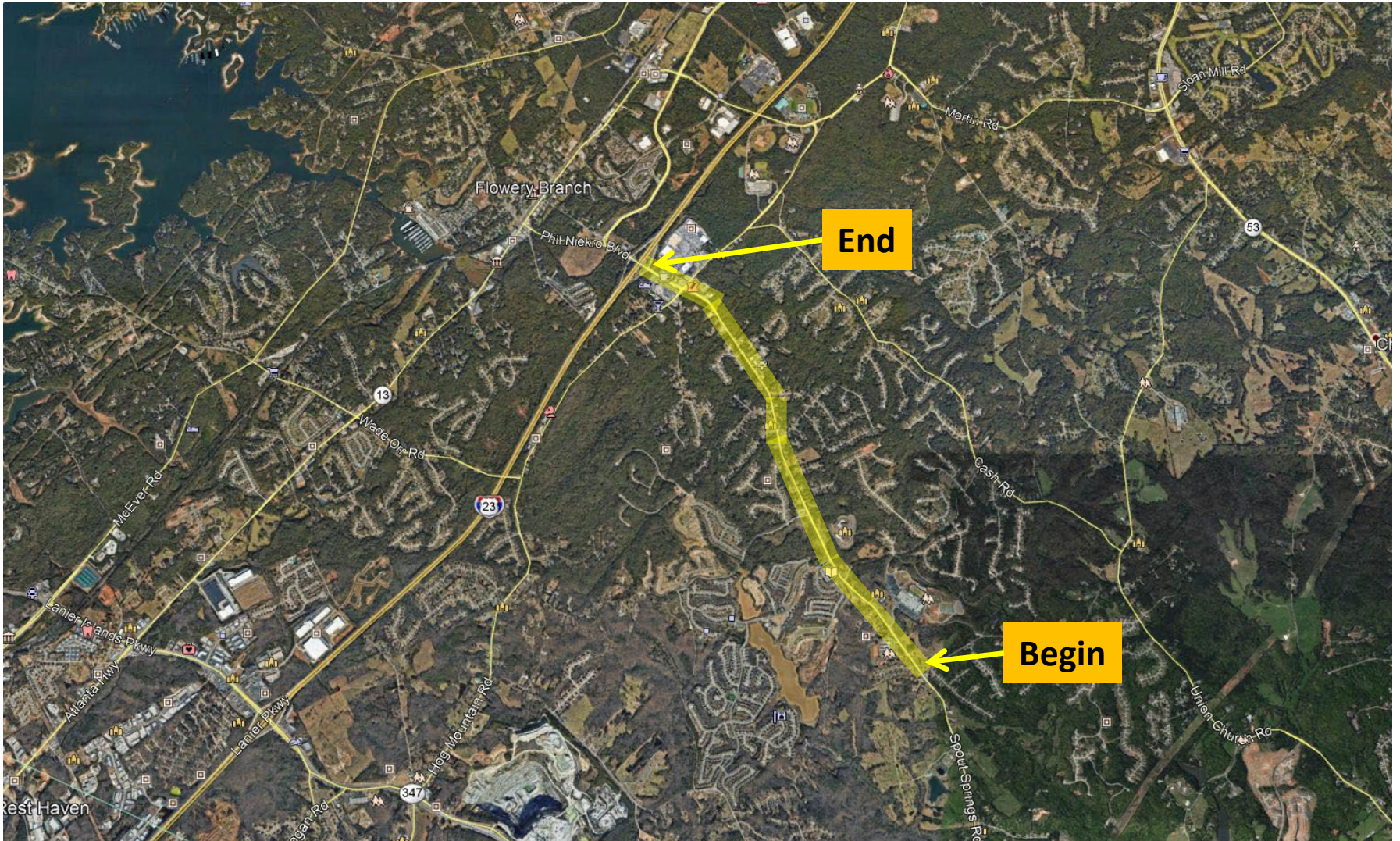
I-285 FROM WEST END OF AIRPORT TUNNEL TO SR 14/US 29 Resurfacing Project in Clayton and Fulton Counties Congressional Districts 5 and 13



SR 27 FROM N OF JIM HAMMOCK DRIVE TO S OF TO HALEY ROAD
Resurfacing Project in Telfair County
Congressional District 8



SPOUT SPRINGS ROAD FROM I-985 TO UNION CIRCLE - PHASE I Widening Project in Hall County Congressional District 9



SR 53 WB @ CHATTAHOOCHEE RIVER Bridge Replacement Project in Hall County Congressional District 9



**SR 53 WB @ CHATTAHOOCHEE RIVER
Bridge Replacement Project in Hall County
Congressional District 9 (Continued)**



WEST CLEVELAND BYP ALONG CR 68 FM W OF SR 11 TO SR 75 - PH III Widening Project in White County Congressional District 9



SR 32 @ 17 MILE RIVER APPROX 3 MI E OF DOUGLAS
Bridge Replacement Project in Coffee County
Congressional District 12

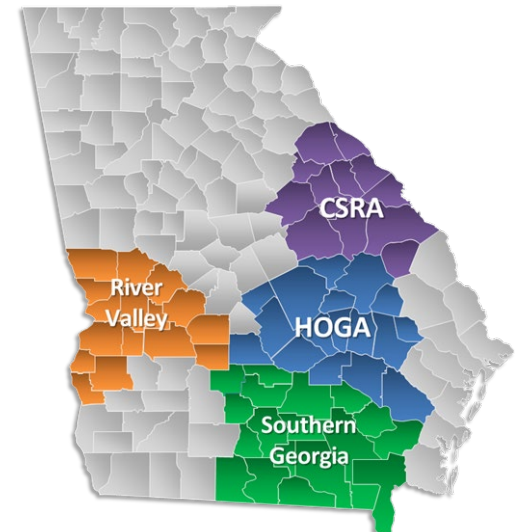


**SR 32 @ 17 MILE RIVER APPROX 3 MI E OF DOUGLAS
Bridge Replacement Project in Coffee County
Congressional District 12 (Continued)**



June 2019 Letting Proposed TIA Projects

Kenneth Franks
State TIA Administrator
May 16, 2019

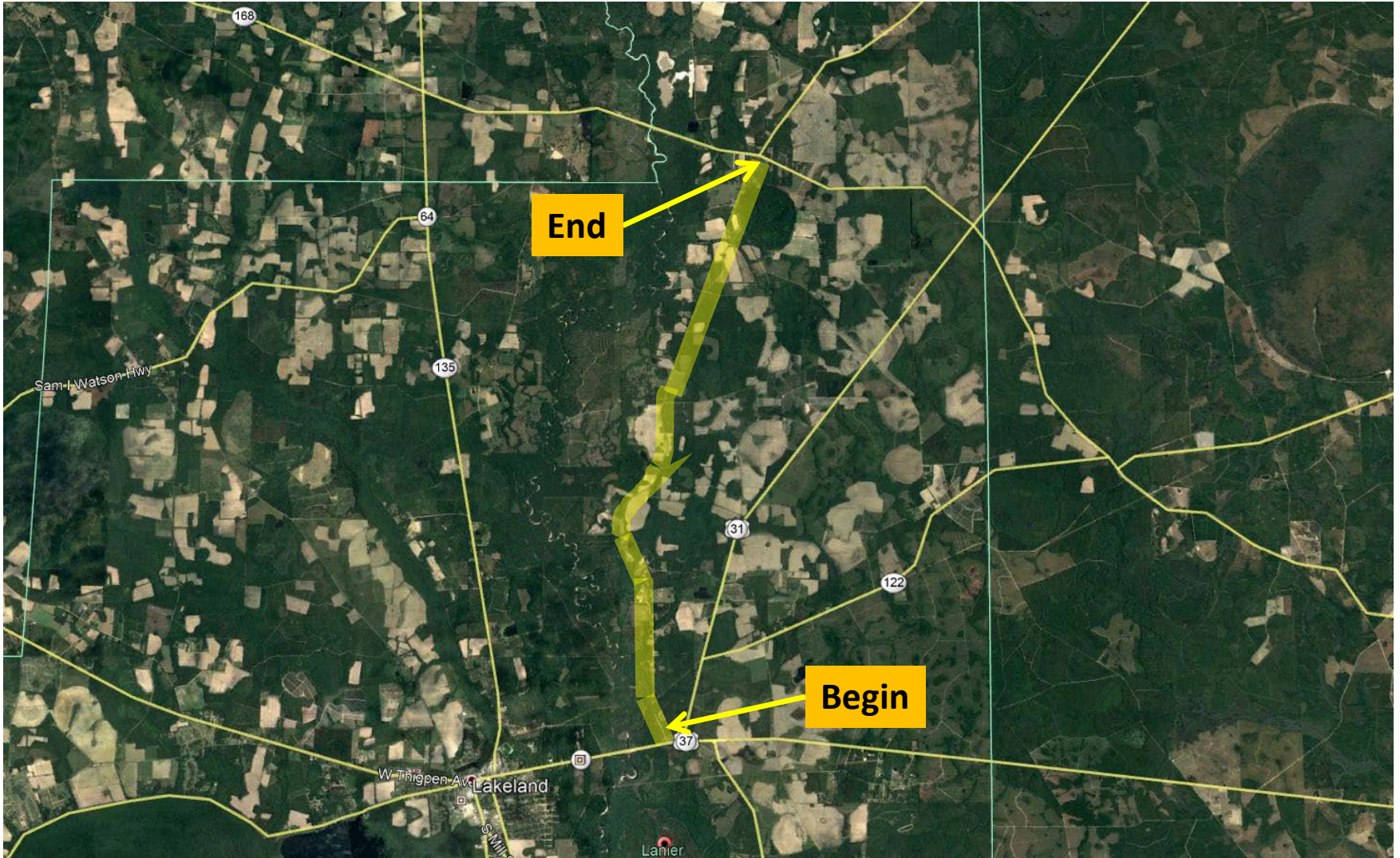


TIA Projects

June 2019 Letting

Project ID	Description	Primary County	Primary Work Type	Congressional District	Project Let By	TIA Region
0016267	CR 96/CR 149/RIVER ROAD FROM SR 64 TO SR 11/US 221 - TIA	Lanier	Minor Widen & Resurf	008	DOT	Southern Georgia
220680-	SR 4 FROM OLIVE ROAD TO GOVERNMENT STREET - TIA	Richmond	Widening	012	DOT	Central Savannah River

**CR 96/CR 149/RIVER ROAD FROM SR 64 TO SR 11/US 221 - TIA
Resurfacing Project in Lanier County
Congressional District 8**



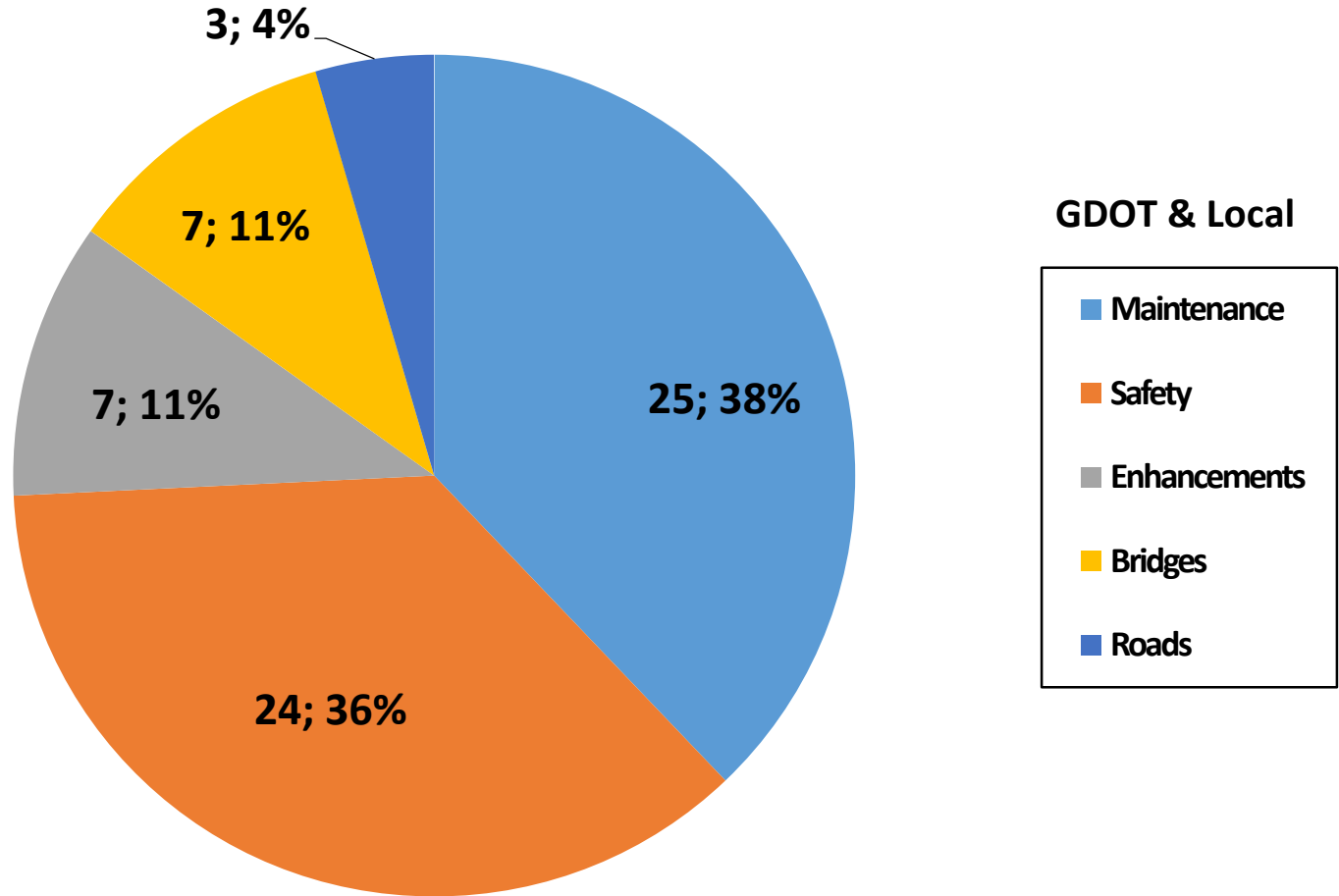
SR 4/ 15th St. FROM OLIVE ROAD TO GOVERNMENT STREET - TIA Widening Project in Richmond County Congressional District 12



Fiscal Year 2019 Letting Report

Number of Projects

June 2019 Letting



Total = 66

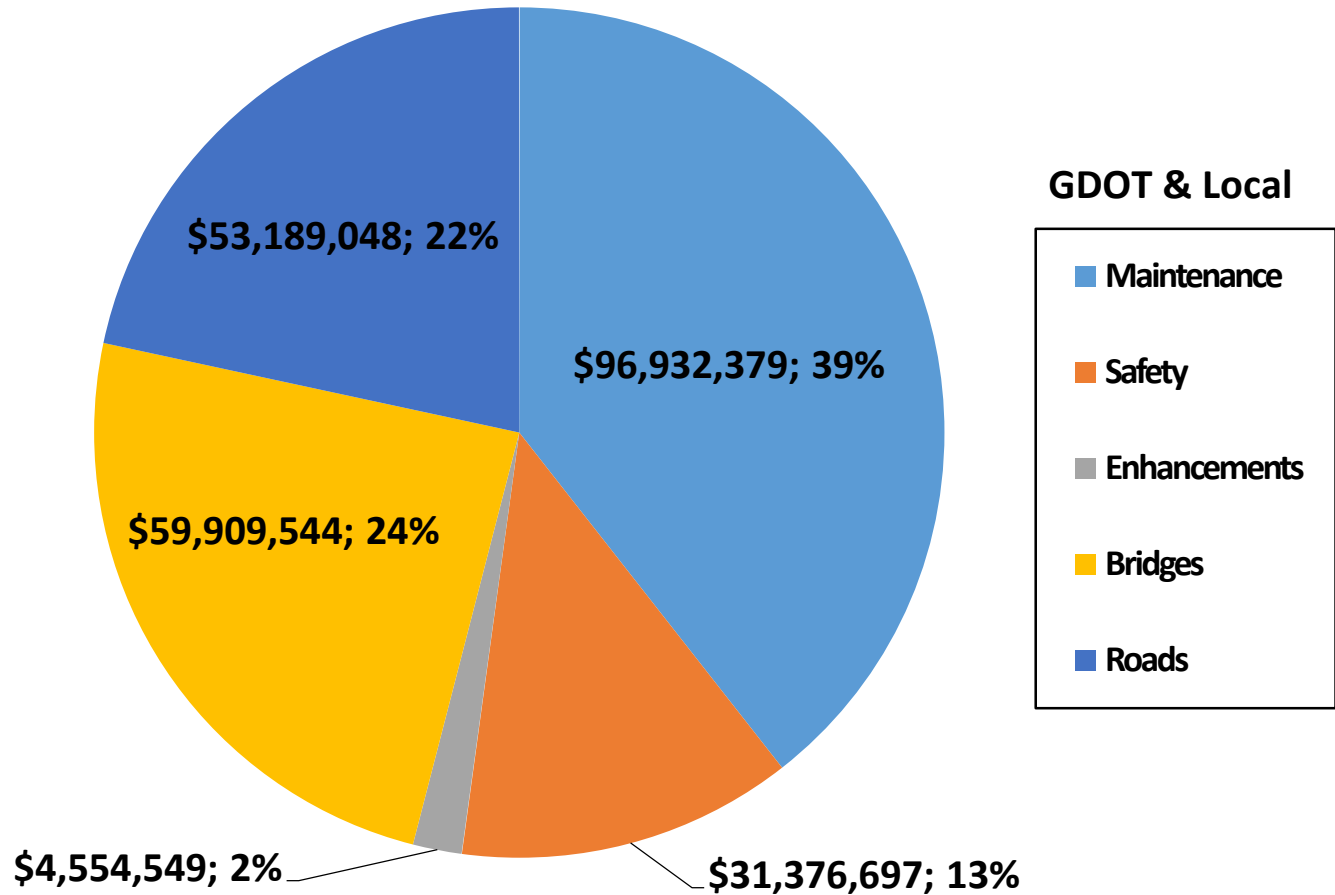
Does not include LMIG Projects

*As of May 9, 2019
Source TPro – Chief Approved FY '19 Letting List*

Fiscal Year 2019 Letting Report

Dollar Amount of Projects

June 2019 Letting



Total = \$245,962,216

Does not include LMIG Projects

Board Approval