



Technical Proposal

US 280 / SR 30 Widening and Interchange Improvements Design-Build Project

P.I. No. 0016618
Bryan County, GA

Submitted To:



Submitted By:



in association with



August 10, 2023

TABLE OF CONTENTS

C.1. Technical Proposal	Page
C.1.1 Construction Staging and Traffic Management Narrative.....	1
C.1.1 (a) Construction Phasing and Traffic Management Approach.....	1
C.1.1 (b) Approach to Minimizing Impacts and User Distraction.....	2
C.1.2 Project Management Approach.....	3
C.1.3 Proposal Schedule.....	3
C.1.3 (a) Proposal Schedule.....	Appendix A
C.1.3 (b) Proposal Schedule Meets all Requirements of (i) - (vi) Listed in Section C.1.3 (b) of the RFP.....	3
C.1.3 (c) Proposal Schedule Narrative.....	3
C.1.3 (c)(i) Addressing Items #2-5 in Section 2.4.1 of TP Attachment 2-8.....	3
C.1.3 (c)(ii) Addressing Items #1-4 and #6-9 in TP Section 2.3.1.19.....	4
C.1.3 (c)(iii) How Proposal Schedule Accommodates the Construction Staging Traffic Management, Anticipated Utility Adjustments, Environmental and Permitting, and Other Elements of Proposer’s Plan to Execute the Work.....	4
C.1.4 Form AA.....	Following p. 4
C.2. Project Differences from the Basic Configuration	
How Approach to Design and Construction Differs Materially from the Basic Configuration	Following C.2. Tab
C.3. Interim Completion, Substantial Completion, and Final Acceptance Proposal – Form M	
Form M	Following C.3. Tab
C.4. Work Product Requirements	
Work Product.....	See PDMS folder labeled “Documents \ 20 Matthews-McLendon \ G Technical Proposal \ Work_Product”
C.5. Organizational Chart	
Organizational Chart.....	Following C.5. Tab

Appendix

Proposal Schedule.....	Appendix A
------------------------	------------



C.1. Technical Proposal

C.1. Technical Proposal

C.1.1 Construction Staging and Traffic Management Narrative

C.1.1 (a) Construction Phasing and Traffic Management Approach | Widening of and improvements to the US 280 / SR 30 Interchange, adjacent to the Bryan County MegaSite, present a unique set of challenges well within the experience, expertise, and management capabilities of the Matthews-McLendon Joint Venture (MMJV) and Infrastructure Consulting & Engineering, PLLC (ICE) Team (MMJV / ICE Team.) The Team developed a preliminary Construction Phasing and Staging Plan and Traffic Control Plan (TCP) focused on effectively managing the high traffic volumes, known to include a high percentage of trucks, accessing the MegaSite and staging construction in an efficient manner to meet Contract milestones. Members of the MMJV / ICE Team have many years of collaborative experience providing technical solutions for GDOT Design-Build projects, and immediately after release of the RFP involved the Project Development Team in developing mitigation strategies that will be utilized to address the following Project challenges:

PROJECT CHALLENGES

Significant Known and Anticipated Project Challenges	Addressing the Challenge
<p>1 Accelerated Schedule</p>	<p>DBA Exhibit 4 identifies 19 parcels that will not be available to the Team until 9/15/2024. An interim milestone was established in Amendment 1 to the RFP. The interim milestone requires traffic to be in its final lane configurations between I-16 and the Frontage Road by 3/31/2025. The 19 parcels identified in Exhibit 4 are necessary for construction of US 280 in area governed by the interim milestone. As such, the Team is provided, at most, 197 days to construct a significant portion of the Project. Should utility relocations, currently being coordinated by GDOT and utility owners, require access to these parcels, the roadway construction period will be significantly reduced. We have carefully evaluated the utility relocation plans provided as RIDs and considered both the existing and future location of utilities in their design and staging approach. The Team will begin coordinating with GDOT and utility owners as soon as possible to ensure the limited construction is fully utilized.</p>
<p>2 Utility Coordination</p>	<p>While utility relocation designs and efforts are currently being coordinated and performed by GDOT and utility owners, the Design-Build Team must still develop a construction schedule that meets contractual milestones dates in parallel with these independent efforts. We have identified the position of existing utilities and their final locations and developed a schedule to prioritize work that is available regardless of relocation status. Early and consistent coordination between relocation contractors and the Design-Build Team construction personnel will be critical to allow the two parties to work simultaneously on site.</p>
<p>3 Third-Party / Stakeholder Coordination</p>	<p>The Team must coordinate with several third parties in addition to utility personnel. Critical third parties include the MegaSite Development, businesses along US 280, and the traveling public utilizing the interchange and surrounding facilities. The MegaSite is currently under construction, and a significant number of construction vehicles access the site every day. The Team considered these traffic volumes when developing the project schedule and staging approach. Our staging approach also considers existing businesses and maintains access, as required, to these parcels. Existing traffic on US 280 and the I-16 interstate ramps must also be maintained. The Design-Build Team has developed temporary traffic control elements needed to maintain satisfactory operations. We intend to actively coordinate with the third parties in the post-let period to enhance delivery of the Project.</p>
<p>4 FEMA Floodplain Coordination and Compensatory Excavation</p>	<p>The turnaround on Olive Branch Road is placed within a FEMA Zone AE Floodplain and may require a Conditional Letter of Map Revision (CLOMR) to install. Furthermore, Bryan County Floodplain Managers require compensatory mitigation for fill placed in Floodplains. The Design-Build Team is prepared to perform the compensatory excavation in the area defined by GDOT. The Design-Build Team will actively coordinate with floodplain managers through final design to verify that compensatory mitigation requirements have been satisfied.</p>
<p>5 Limited Geotechnical Information</p>	<p>The Soil Survey Report, as the basis of embankment design, will be a key document in advancing the plans for approval by the first ROW access date of 9/15/2024. The Design-Build Team is prepared to phase geotechnical investigations and reports, as necessary, to advance critical work elements as soon as they become available.</p>

Proposal to Design and Construct the US 280 / SR 30 Widening and Interchange Improvements Project | Bryan County, GA

The MMJV Team's detailed Construction Phasing and Staging Plan, which will align with the Project Schedule and be coordinated with the Traffic Control Plan, will be based on accelerating plan packages for areas of the Project not restricted by ROW acquisition activities, permitting, or utility relocations. The Design-Builder will consider implementing separate plan packages based on Project areas, for example "Package A," "Package B," and "Package C," corresponding to the Parcel Availability Dates bearing the same identifier. These packages may be further subdivided to allow the Design-Builder to mobilize and perform preliminary construction activities such as erosion control, traffic control, and clearing prior to completing the full roadway design.



C.1.1 (b) Approach to Minimizing Impacts and User Distraction | Due to the US 280 roadway widening, roundabout construction, and phased ramp construction adjacent to traffic, effective notification and outreach to the traveling public and first responders, coupled with an effective Traffic Management Plan (TMP), is paramount to the success of the Project. The MMJV Team plans to construct as much of the Project as possible outside the existing travel lanes to reduce impacts and minimize allowable lane and shoulder closures, traffic pacing, traffic shifts, and lane width reductions. Where necessary, temporary pavement will be installed to accommodate traffic operations during interim construction operations. In accordance with interim milestone requirements, the MMJV Team will strive to establish the roundabout movements as soon as possible in an effort to reduce the number of temporary signal modifications and enhance traffic operations. Construction entrances and exits from US 280 to work areas will be clearly designated and designed to reduce their impact on the existing roadway. The Team's approach to traffic management includes:

- **Development of a Traffic Management Project Development Group (PDG)** – This step began in the procurement phase and will continue after NTP1 with the inclusion of GDOT for developing the project-specific framework for the TMP and specific solutions for the TCP.
- **Development of the Traffic Management Plan (TMP)** – The TMP will outline the procedures for public notification, governmental agency coordination, design of traffic control devices, and procedures for incident management and response.
- **Development of a Temporary Traffic Control Plan (TTCP)** – These detailed plans identify the planned staging, opening, and modifications to temporary and permanent traffic control devices that will be developed in accordance with the *Manual on Uniform Traffic Control Devices (MUTCD)*, AASHTO's *Roadside Design Guide*, GDOT Special Provision 150 – Traffic Control, and the Technical Provisions.
- **Implementation of the GDOT Developed Public Information and Communications Plan** – The Design-Build Team will operate in conformance with GDOT's Public Involvement Plan and will supplement GDOT's public outreach program by developing specific strategies for public outreach.



The primary objective of the MMJV Team's construction sequencing will be to safely move the traveling public through the Project with minimal delays and minimal distractions. The Construction Phasing and Staging Plan will meet this objective and will also address these specific Project challenges:

- Limited lane closure durations and available days for interruptions.
- Temporary traffic control for roadway widening and associated construction activities along US 280.
- Ingress and egress points for construction activities and laydown areas minimizing impacts to the traveling public, recreational users, and stakeholders.

During the construction phase, the MMJV Team will maintain the Project in accordance with the Maintenance Management Plan with appropriate resources to ensure pavement, signs, and striping are maintained to a level that provides the traveling public safe passage along US 280 through the Project limits. Conflicts at transition points where vehicles and trucks interact will be minimized by strategically planning access points with clear signing of these locations, including Changeable Message Signs (CMS) advising drivers of trucks entering and exiting the travel lanes. Entrance and exit points to the work areas will be protected with impact attenuators, if needed, and constructed with an aggregate surface to assist trucks in maintaining speed while keeping construction materials off the existing roadway.

The MMJV / ICE Team does not propose to design and construct P.I. No. 0016618 materially different from the RIDs. The roadway plans have been optimized to minimize utility conflicts and to reduce the number of construction stages.

C.1.2 Project Management Approach

The MMJV / ICE Team's approach to management of the Project will be guided by the Project Management Plan (PMP) and knowledge and experience gained from 15 years of partnering on and successfully delivering GDOT Design-Build projects alongside dedicated local experience. The MMJV Team has specific experience delivering and operating under a Project Management Plan in compliance with the provisions of this Contract. Specific examples include the PMPs developed for the SR 400 Phase 1, US 278 Widening and Frontage Road, and I-16 Frontage Road Design-Build Projects. The PMPs developed for these projects have been refined and will be utilized as guides to accelerate the early phases of the US 280 Widening and Interchange Project. Specifically, implementation of an optimized PMP, targeted to the needs of this Project, will enhance the design, construction, maintenance, and quality aspects. Furthermore, the MMJV Team has dedicated key personnel to this Project with direct experience developing, implementing, and maintaining the required PMP. Most of the Project Development Team Members listed below served as key personnel on at least one of the previously listed projects. These personnel have been present since the start of the proposal phase and are committed to the Project. This continuity in staffing while integrating other Team members, with similar experience, will facilitate a seamless transition through each phase of the Project.



**Kyle
Marchman**

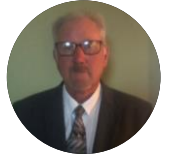


**Tyler
McIntosh**

Kyle Marchman, PE (Lead Contractor Project Manager), will lead the Team and utilize the PMP to address design, construction, and maintenance in an integrated manner from NTP1 through Final Acceptance. Kyle has been involved in numerous Design-Build projects and has the authority and understanding of the importance to make decisions quickly. He also has the power to employ internal or external resources, as needed, to meet the Contract goals and to uphold maintenance obligations. **Tyler McIntosh, PE**, will serve as the Lead Design Consultant Project Manager, and **Elizabeth Scales, PE**, will serve as the Engineer of Record. This gives the Team continuity and a unified flow of Project-specific knowledge between GDOT project management, the design team, the construction team, and the quality control team. **Dwayne Sharpe** (Contractor Superintendent) will coordinate daily site operations for all self-perform and subcontractor activities and will work to proactively identify issues that may affect the schedule. **Matthew Betsill, EIT** (Quality Control Manager), will administer the Quality Plan to ensure all QA / QC checkpoints are scheduled, executed, and documented for design, construction, and maintenance requirements. Past success on similar Design-Build projects has shown each of these key members of the management team that early and effective communication and transparency among all stakeholders promotes a cohesive design, construction, and maintenance plan. The MMJV / ICE Team supports the Project Meetings and Partnering outlined in the Contract Project Management requirements and is committing team members that will actively collaborate with the owner representatives to deliver all Project requirements successfully, overcome obstacles, and achieve the earliest completion date possible while maintaining quality standards and public confidence.



**Elizabeth
Scales**



**Dwayne
Sharpe**



**Matthew
Betsill**

C.1.3 Proposal Schedule

C.1.3 (a) Proposal Schedule | The MMJV / ICE Team's Proposal Schedule is included in **Appendix A** and meets requirements (i) – (iii).

C.1.3 (b) Proposal Schedule Meets all Requirements | The Proposal Schedule also meets all requirements (i) – (vi).

C.1.3 (c) Proposal Schedule Narrative | The Proposal Schedule was developed from the preliminary engineering, utility research, construction estimating, and constructability analyses performed during the proposal development phase. Upon award of the Contract and issuance of NTP1, this Proposal Schedule will be updated and enhanced as additional data and coordination occurs, resulting in the Baseline Schedule. Baseline Schedule updates will occur throughout the life of the Project as a tool to monitor Project progress and plan upcoming work activities.

C.1.3 (c)(i) Addressing Items #2-5 in Section 2.4.1 of TP Attachment 2-8

2. Resources and Staffing. The Design-Build Team will utilize a robust and qualified project management and design team to ensure all work zones will be designed simultaneously. Moreover, the Design-Build Team will dedicate the labor and equipment necessary to complete the Project on time. The Design-Build Team's resources will not drive the critical path.

3. Critical Paths and Near-Critical Paths. The Critical Path is driven by ROW availability and roadway construction from Station 1090+00 to the end of the Project. The Design-Build Team must meet several milestones including NTP2 within 90 days of NTP1; Interim Completion by March 31, 2025; and Substantial Completion by December 31, 2025.

4. Non-Work Periods, Starts, or Completions. The Design-Build Team utilized the following Project Calendars to capture Non-Work Periods: 7-Day-No-Holiday, 5-Day-Workweek, and 6-Day-Roadway. These are described in detail in Section C.1.3(c)(ii) 9. Work Periods and Calendars.

5. Lags. The Design-Build Team did not use any lags in the Proposal Schedule.

C.1.3 (c)(ii) Addressing Items #1-4 and #6-9 in TP Section 2.3.1.19

1. Roles and Responsibilities – Schedule Execution. The following members of the Design-Build Team will have a role in planning and scheduling the work.

Project Scheduler	Design Project Manager	Construction Project Manager	Environmental Compliance Manager	ROW Project Manager	Utility Manager
Responsible for developing and maintaining the Baseline Schedule and submitting schedule updates, as required.	Responsible for executing and meeting the Design Schedule.	Responsible for executing and meeting the Construction Schedule.	Responsible for monitoring, documenting, reporting the status of environmental compliance, and verifying monthly reporting requirements.	Responsible for following the ROW acquisition process and communicating any delays that might impact the critical path.	Responsible for monitoring the utility relocation process, communicating schedule requirements, and coordinating Utility Relocations with the Construction Schedule.

2. Schedule Development. The Design-Build Team's Proposal Schedule includes activities representing the full scope of work required to complete the Project. The activities were sequenced using appropriate logic, such that the actual critical path between NTP1 and Project Completion was identified. The Design-Build Team evaluated the Schedule to determine the resources required to achieve the Substantial Completion and Final Acceptance Milestones.

3. Schedule Updates. The Design-Build Team will use Monthly Project Schedule Updates to communicate the percent of work complete, upcoming work, and critical path changes. The Baseline Schedule will be cost-loaded, so the percent of work complete will be coordinated with the invoices generated by the Design-Build Team.

4. GDOT and Third-Party Activities. The Design-Build Team included activities for all required GDOT and Third-Party Reviews and Construction Activities in the Proposal Schedule. The durations for these activities were determined using durations outlined in the RFP or in coordination with Third Parties. These activities were pivotal for Schedule development and Critical Path identification.

6. Integration of Design-Builder Quality Management Plan (QMP) and Schedule. The Design-Build Team included the required QMPs as activities in the Proposal Schedule and incorporated logic to sequence these activities with GDOT Design Reviews. The Design-Builder included time, internal to document preparation and construction activities, to execute the provisions of the QMP.

7. GDOT Reviews and Comments. The Design-Build Team included activities and logic to appropriately handle GDOT Reviews, Comment Resolution, and Re-Reviews of the Design-Build Team submittals.

8. Work Breakdown Structure (WBS), Activity Numbering, and Coding. The Design-Build Team utilized a WBS and Activity Numbering Scheme in compliance with the requirements of the ITP. Activity coding, alongside the WBS, will be used to organize the Schedule and communicate major work components.

9. Work Periods and Calendars. The Design-Build Team utilized the following Project Calendars when developing the Proposal Schedule:

1. 7-Day-No-Holiday – A seven-day work week calendar that does not exclude holidays or account for weather. This was primarily used for Milestones, Contract Submittals, Design Development, Environmental Permitting, Shop Drawings, and Material Fabrication.
2. 5-Day-Workweek – A five-day workweek calendar used for administrative and design tasks. This calendar was used for Design-Build Team activities, GDOT activities, and Third-Party Review activities, as applicable.
3. 6-Day-Roadway – A six-day workweek roadway calendar that includes weather days and holidays for Memorial Day, July 4th, Labor Day, two days at Thanksgiving, and two days at Christmas.

C.1.3 (c)(iii) How Proposal Schedule Accommodates the Construction Staging Traffic Management, Anticipated Utility Adjustments, Environmental and Permitting, and Other Elements of Proposer's Plan to Execute the Work

The Proposal Schedule was meticulously structured using a WBS that provides a detailed overview of the key scope items, including Project Management, Design Management, Environmental Permitting, Utility Management and Relocation, ROW Acquisition, Material Procurement, and Construction Management. To align with the Design-Build Team's Construction Phasing and Staging approach, the Construction Management segment of the Schedule was further divided into WBS components. These components correspond to specific worksites and stages, enabling a clear link between activities and the construction staging logic.

Both the Schedule and Construction Staging Plan were developed in tandem to ensure seamless integration. In turn, the Schedule accurately represents the planned traffic staging while meeting the required Contract milestones. The Proposal Schedule considers the construction staging traffic management, as described in response to Section C.1.1. Additionally, it considers anticipated Utility Adjustments, Environmental and Permitting requirements, and all other elements of the MMJV / ICE Team's plan to effectively execute the Work.

FORM AA

INDICATIVE PROPOSAL QUANTITIES

INSTRUCTIONS:

- (a) Submit one completed copy of Form AA for the Proposer.
- (b) Populate the Indicative Proposal Quantity column for each Base Material item on the unit basis indicated. If electing to opt out of participating in Indicative Proposal Quantity, Proposer shall insert 'N/A' in lieu of a quantity.

Base Material	Indicative Proposal Quantity	Unit
Asphalt Cement	4,460	Ton
Fuel (Regular)	N/A	Gallon
Fuel (Diesel)	N/A	Gallon
Semi-Finished Steel Mill Products	N/A	CWT
Portland cement ingredients and related products	N/A	Ton

Indicative Proposal Quantities shall be true estimates based on the Proposer's design and construction plan. They shall be supported by calculations either attached to this form or contained in the Escrowed Documents showing how the amounts are derived from the Proposer's design and construction plan and assumptions.



C.2. Project Differences from the Basic Configuration

C.2. Project Differences from the Basic Configuration

How Approach to Design and Construction Differs Materially from the Basic Configuration

The MMJV / ICE Team does not propose to design and construct P.I. No. 0016618 materially different from the Basic Configuration so there are no schematic plans included.



C.3. Interim Completion, Substantial Completion, and Final Acceptance Proposal – Form M

FORM M
INTERIM COMPLETION, SUBSTANTIAL COMPLETION AND FINAL ACCEPTANCE
PROPOSAL

Proposer Name: Matthews-McLendon Joint Venture

The Proposer shall complete the fields below for each portion (segment) of the Work for which the Proposer will commit to the Milestone Deadlines as set forth below. All days are calendar days.

Table M-1: Milestone Deadlines

Milestones	Deadlines
NTP 2 Conditions Deadline	Not later than 90 Days after the date GDOT issues NTP1
Interim Milestone Deadlines	
Early Opening – US 280 from I-16 Westbound Ramp to South Access Road	No later than March 31, 2025
Substantial Completion Deadline	No later than December 31, 2025
Final Acceptance Deadline	90 Days after the Substantial Completion Date

Date: August 8, 2023

Proposer: Matthews-McLendon Joint Venture

Signature: *Jeffrey C. Shropshire*

Title: Jeffrey C. Shropshire, Senior Vice President for CWM & Authorized Representative for the Matthews-McLendon Joint Venture



C.4. Work Product Requirements

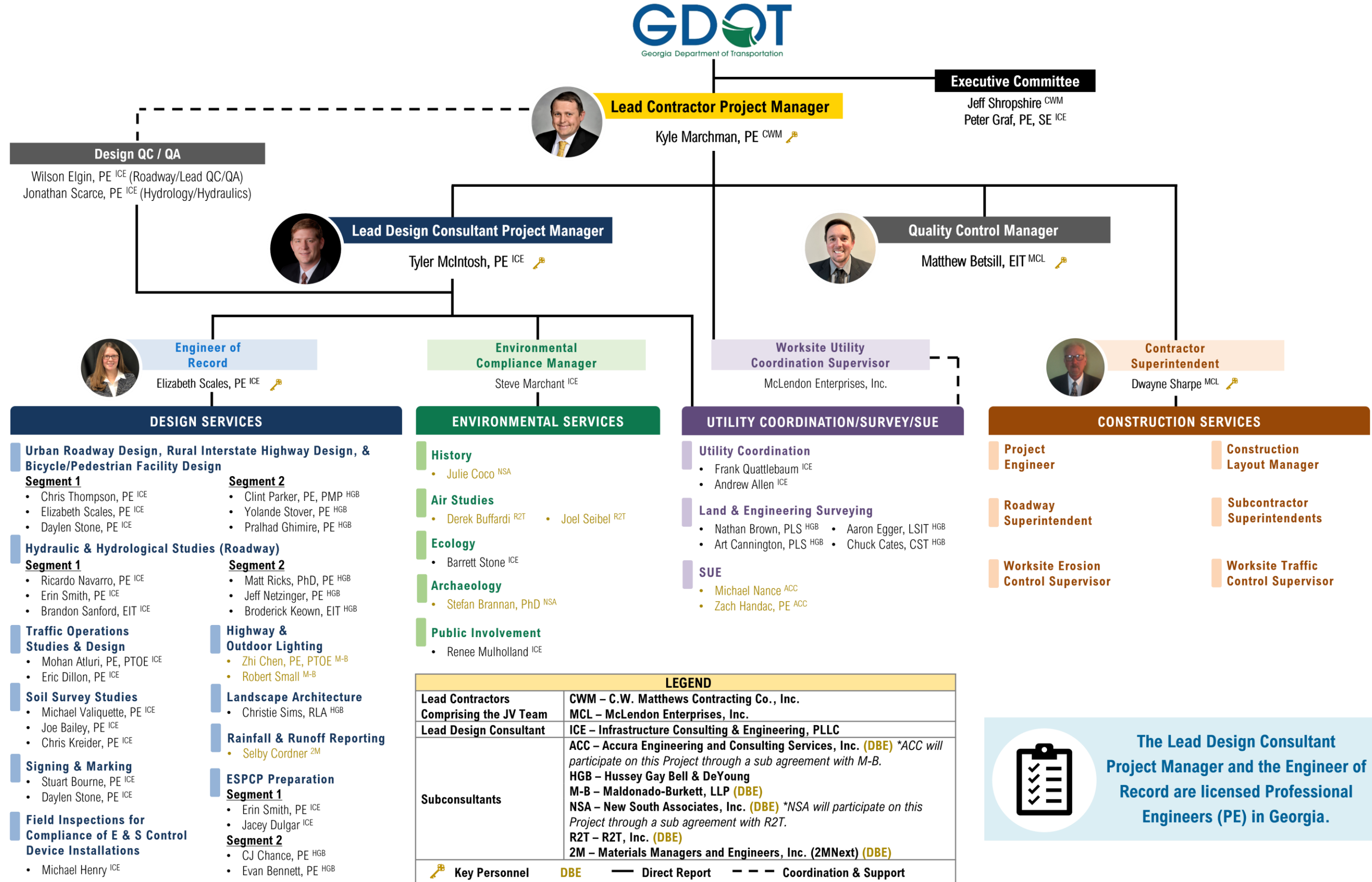
*See PDMS folder labeled "Documents \ 20 Matthews-McLendon \ G Technical Proposal \ Work_Product"



C.5. Organizational Chart

C.5. Organizational Chart

The organizational chart below illustrates the lines of communication, functional structure, levels of management, and reporting relationships for the Key Personnel and all staff proposed.





Appendix A – Proposal Schedule



Activity ID	Activity Name	Original Duration	Remaining Duration	Start	Finish	Total Float	Physical % Complete	Calendar	2024				2025				2026				2027			
									Q4	Q1	Q2	Q3	Q4	Q1	Q2	Q3	Q4	Q1	Q2	Q3	Q4	Q1		
US 280/SR 30 Widening and Interchange Improvements - Proposal		867.00d	867.00d	Nov-16-2023	Mar-31-2026	0.00d			Mar-31-2026; US 280/SR 30															
Project Summary and Milestones		867.00d	867.00d	Nov-16-2023	Mar-31-2026	0.00d		0016618-7-DAY WEEK (NO HOLIDAYS)	Mar-31-2026; Project Summary and Milestones															
A1000	Notice to Proceed - 1 - Preliminary Design Activities	0.00d	0.00d	Nov-16-2023*		0.00d	0%	0016618-7-DAY WEEK (NO HOLIDAYS)	◆ Notice to Proceed - 1 - Preliminary Design Activities															
A1010	Notice to Proceed - 2 - Final Design Activities	0.00d	0.00d	Feb-03-2024*		11.00d	0%	0016618-7-DAY WEEK (NO HOLIDAYS)	◆ Notice to Proceed - 2 - Final Design Activities															
A1020	Notice to Proceed - 3A - US 280/SR 30	0.00d	0.00d	Jun-04-2024		11.00d	0%	0016618-7-DAY WEEK (NO HOLIDAYS)	◆ Notice to Proceed - 3A - US 280/SR 30															
A1110	Interim Milestone - Early Opening	0.00d	0.00d		Mar-31-2025*	0.00d	0%	0016618-7-DAY WEEK (NO HOLIDAYS)	◆ Interim Milestone - Early Opening															
A1040	Substantial Completion Deadline	0.00d	0.00d		Dec-31-2025*	0.00d	0%	0016618-7-DAY WEEK (NO HOLIDAYS)	◆ Substantial Completion Deadline															
A1050	Final Acceptance Deadline	0.00d	0.00d		Mar-31-2026*	0.00d	0%	0016618-7-DAY WEEK (NO HOLIDAYS)	◆ Final Acceptance Deadline															
General and Project Management		181.00d	181.00d	Nov-16-2023	May-14-2024	31.00d			May-14-2024; General and Project Management															
Project Schedule of Values and Baseline Schedules		129.00d	129.00d	Nov-16-2023	May-14-2024	23.00d		0016618-5-DAY WEEK (NO WEATHER)	May-14-2024; Project Schedule of Values and Baseline Schedules															
Project Schedule of Values		78.00d	78.00d	Nov-16-2023	Mar-04-2024	23.00d		0016618-5-DAY WEEK (NO WEATHER)	Mar-04-2024; Project Schedule of Values															
NTP 1 SOV		36.00d	36.00d	Nov-16-2023	Jan-04-2024	7.00d		0016618-5-DAY WEEK (NO WEATHER)	Jan-04-2024; NTP 1 SOV															
A1060	DB Team Prepares NTP 1 SOV	5.00d	5.00d	Nov-16-2023	Nov-22-2023	7.00d	0%	0016618-5-DAY WEEK (NO WEATHER)	DB Team Prepares NTP 1 SOV															
A1070	GDOT Reviews/Comments on NTP 1 SOV	15.00d	15.00d	Nov-23-2023	Dec-13-2023	7.00d	0%	0016618-5-DAY WEEK (NO WEATHER)	GDOT Reviews/Comments on NTP 1 SOV															
A1080	DB Team Addresses GDOT Comments on NTP 1 SOV	1.00d	1.00d	Dec-14-2023	Dec-14-2023	7.00d	0%	0016618-5-DAY WEEK (NO WEATHER)	DB Team Addresses GDOT Comments on NTP 1 SOV															
A1090	GDOT Reviews/Accepts NTP 1 SOV	15.00d	15.00d	Dec-15-2023	Jan-04-2024	7.00d	0%	0016618-5-DAY WEEK (NO WEATHER)	GDOT Reviews/Accepts NTP 1 SOV															
NTP 2 SOV		36.00d	36.00d	Dec-15-2023	Feb-02-2024	7.00d		0016618-5-DAY WEEK (NO WEATHER)	Feb-02-2024; NTP 2 SOV															
A4270	DB Team Prepares NTP 2 SOV	5.00d	5.00d	Dec-15-2023	Dec-21-2023	17.00d	0%	0016618-5-DAY WEEK (NO WEATHER)	DB Team Prepares NTP 2 SOV															
A4280	GDOT Reviews/Comments on NTP 2 SOV	10.00d	10.00d	Jan-05-2024	Jan-18-2024	7.00d	0%	0016618-5-DAY WEEK (NO WEATHER)	GDOT Reviews/Comments on NTP 2 SOV															
A4290	DB Team Addresses GDOT Comments on NTP 2 SOV	1.00d	1.00d	Jan-19-2024	Jan-19-2024	7.00d	0%	0016618-5-DAY WEEK (NO WEATHER)	DB Team Addresses GDOT Comments on NTP 2 SOV															
A4300	GDOT Reviews/Accepts NTP 2 SOV	10.00d	10.00d	Jan-22-2024	Feb-02-2024	7.00d	0%	0016618-5-DAY WEEK (NO WEATHER)	GDOT Reviews/Accepts NTP 2 SOV															
NTP 3 SOV		31.00d	31.00d	Jan-22-2024	Mar-04-2024	23.00d		0016618-5-DAY WEEK (NO WEATHER)	Mar-04-2024; NTP 3 SOV															
A4310	DB Team Prepares NTP 3 SOV	5.00d	5.00d	Jan-22-2024	Jan-26-2024	28.00d	0%	0016618-5-DAY WEEK (NO WEATHER)	DB Team Prepares NTP 3 SOV															
A4320	GDOT Reviews/Comments on NTP 3 SOV	10.00d	10.00d	Feb-05-2024	Feb-16-2024	23.00d	0%	0016618-5-DAY WEEK (NO WEATHER)	GDOT Reviews/Comments on NTP 3 SOV															
A4330	DB Team Addresses GDOT Comments on NTP 3 SOV	1.00d	1.00d	Feb-19-2024	Feb-19-2024	23.00d	0%	0016618-5-DAY WEEK (NO WEATHER)	DB Team Addresses GDOT Comments on NTP 3 SOV															
A4340	GDOT Reviews/Accepts NTP 3 SOV	10.00d	10.00d	Feb-20-2024	Mar-04-2024	23.00d	0%	0016618-5-DAY WEEK (NO WEATHER)	GDOT Reviews/Accepts NTP 3 SOV															
Project Baseline Schedule		129.00d	129.00d	Nov-16-2023	May-14-2024	23.00d		0016618-5-DAY WEEK (NO WEATHER)	May-14-2024; Project Baseline Schedule															
NTP 1 Baseline Schedule		30.00d	30.00d	Nov-16-2023	Dec-27-2023	9.00d		0016618-5-DAY WEEK (NO WEATHER)	Dec-27-2023; NTP 1 Baseline Schedule															
A1100	DB Team Prepares NTP 1 Baseline Schedule	5.00d	5.00d	Nov-16-2023	Nov-22-2023	9.00d	0%	0016618-5-DAY WEEK (NO WEATHER)	DB Team Prepares NTP 1 Baseline Schedule															
A1130	GDOT Reviews/Accepts NTP 1 Baseline Schedule	25.00d	25.00d	Nov-23-2023	Dec-27-2023	9.00d	0%	0016618-5-DAY WEEK (NO WEATHER)	GDOT Reviews/Accepts NTP 1 Baseline Schedule															
NTP 2 Baseline Schedule		52.00d	52.00d	Nov-23-2023	Feb-02-2024	7.00d		0016618-5-DAY WEEK (NO WEATHER)	Feb-02-2024; NTP 2 Baseline Schedule															
A1140	DB Team Prepares NTP 2 Baseline Schedule	5.00d	5.00d	Nov-23-2023	Nov-29-2023	29.00d	0%	0016618-5-DAY WEEK (NO WEATHER)	DB Team Prepares NTP 2 Baseline Schedule															
A1170	GDOT Reviews/Accepts NTP 2 Baseline Schedule	25.00d	25.00d	Jan-01-2024	Feb-02-2024	7.00d	0%	0016618-5-DAY WEEK (NO WEATHER)	GDOT Reviews/Accepts NTP 2 Baseline Schedule															
NTP 3 Baseline Schedule		72.00d	72.00d	Feb-05-2024	May-14-2024	23.00d		0016618-5-DAY WEEK (NO WEATHER)	May-14-2024; NTP 3 Baseline Schedule															
A1180	DB Team Prepares NTP 3 Baseline Schedule	5.00d	5.00d	Feb-05-2024	Feb-09-2024	39.00d	0%	0016618-5-DAY WEEK (NO WEATHER)	DB Team Prepares NTP 3 Baseline Schedule															
A1190	GDOT Reviews/Comments on NTP 3 Baseline Schedule	25.00d	25.00d	Mar-05-2024	Apr-08-2024	23.00d	0%	0016618-5-DAY WEEK (NO WEATHER)	GDOT Reviews/Comments on NTP 3 Baseline Schedule															
A1200	DB Team Addresses GDOT Comments on NTP 3 Baseline Schedule	1.00d	1.00d	Apr-09-2024	Apr-09-2024	23.00d	0%	0016618-5-DAY WEEK (NO WEATHER)	DB Team Addresses GDOT Comments on NTP 3 Baseline Schedule															
A1210	GDOT Reviews/Accepts NTP 3 Baseline Schedule	25.00d	25.00d	Apr-10-2024	May-14-2024	23.00d	0%	0016618-5-DAY WEEK (NO WEATHER)	GDOT Reviews/Accepts NTP 3 Baseline Schedule															
Project Management Plan (PMP)		118.00d	118.00d	Nov-16-2023	Mar-12-2024	94.00d			Mar-12-2024; Project Management Plan (PMP)															
PMP Component Plans		118.00d	118.00d	Nov-16-2023	Mar-12-2024	94.00d			Mar-12-2024; PMP Component Plans															
PMP Executive Summary		27.00d	27.00d	Nov-16-2023	Dec-22-2023	37.00d		0016618-5-DAY WEEK (NO WEATHER)	Dec-22-2023; PMP Executive Summary															
A1220	DB Team Prepares PMP Executive Summary	5.00d	5.00d	Nov-16-2023	Nov-22-2023	37.00d	0%	0016618-5-DAY WEEK (NO WEATHER)	DB Team Prepares PMP Executive Summary															
A1230	GDOT Reviews/Comments on PMP Executive Summary	10.00d	10.00d	Nov-23-2023	Dec-06-2023	37.00d	0%	0016618-5-DAY WEEK (NO WEATHER)	GDOT Reviews/Comments on PMP Executive Summary															
A1240	DB Team Addresses GDOT Comments on PMP Executive Summary	2.00d	2.00d	Dec-07-2023	Dec-08-2023	37.00d	0%	0016618-5-DAY WEEK (NO WEATHER)	DB Team Addresses GDOT Comments on PMP Executive Summary															
A1250	GDOT Reviews/Accepts PMP Executive Summary	10.00d	10.00d	Dec-11-2023	Dec-22-2023	37.00d	0%	0016618-5-DAY WEEK (NO WEATHER)	GDOT Reviews/Accepts PMP Executive Summary															
Design-Builder's Organization Description		27.00d	27.00d	Nov-16-2023	Dec-22-2023	37.00d		0016618-5-DAY WEEK (NO WEATHER)	Dec-22-2023; Design-Builder's Organization Description															

█ Primary Baseline
 █ Critical Remaining Work
 Summary
█ Actual Work
 ◆ Baseline Milestone
█ Remaining Work
 ◆ Milestone

US 280 Widening and Interchange Improvements
Design-Build
PI No. 0016618, Bryan County

Data Date: Aug-18-2023



Matthews-McLendon Joint Venture

Proposal Schedule

Submitted: August 10, 2023
Page 2 of 11

Activity ID	Activity Name	Original Duration	Remaining Duration	Start	Finish	Total Float	Physical % Complete	Calendar	2024				2025				2026				2027				
									Q4	Q1	Q2	Q3	Q4	Q1	Q2	Q3	Q4	Q1	Q2	Q3	Q4	Q1			
A1260	DB Team Prepares DB's Organization Description	5.00d	5.00d	Nov-16-2023	Nov-22-2023	37.00d	0%	0016618-5-DAY WEEK (NO WEATHER)																	
A1270	GDOT Reviews/Comments on DB's Organization Description	10.00d	10.00d	Nov-23-2023	Dec-06-2023	37.00d	0%	0016618-5-DAY WEEK (NO WEATHER)																	
A1280	DB Team Addresses GDOT Comments on DB's Organization Description	2.00d	2.00d	Dec-07-2023	Dec-08-2023	37.00d	0%	0016618-5-DAY WEEK (NO WEATHER)																	
A1290	GDOT Reviews/Accepts DB's Organization Description	10.00d	10.00d	Dec-11-2023	Dec-22-2023	37.00d	0%	0016618-5-DAY WEEK (NO WEATHER)																	
Public Information and Communication Plan		27.00d	27.00d	Nov-16-2023	Dec-22-2023	37.00d		0016618-5-DAY WEEK (NO WEATHER)																	
A6070	DB Team Prepares PICP	5.00d	5.00d	Nov-16-2023	Nov-22-2023	37.00d	0%	0016618-5-DAY WEEK (NO WEATHER)																	
A6080	GDOT Reviews/Comments on PICP	10.00d	10.00d	Nov-23-2023	Dec-06-2023	37.00d	0%	0016618-5-DAY WEEK (NO WEATHER)																	
A6090	DB Team Addresses GDOT Comments on PICP	2.00d	2.00d	Dec-07-2023	Dec-08-2023	37.00d	0%	0016618-5-DAY WEEK (NO WEATHER)																	
A6100	GDOT Reviews/Accepts PICP	10.00d	10.00d	Dec-11-2023	Dec-22-2023	37.00d	0%	0016618-5-DAY WEEK (NO WEATHER)																	
Quality Management Plan General Provisions (QMP)		27.00d	27.00d	Nov-16-2023	Dec-22-2023	37.00d		0016618-5-DAY WEEK (NO WEATHER)																	
A1380	DB Team Prepares Quality Management Plan General Provisions	5.00d	5.00d	Nov-16-2023	Nov-22-2023	37.00d	0%	0016618-5-DAY WEEK (NO WEATHER)																	
A1390	GDOT Reviews/Comments on Quality Management Plan General Provisions	10.00d	10.00d	Nov-23-2023	Dec-06-2023	37.00d	0%	0016618-5-DAY WEEK (NO WEATHER)																	
A1400	DB Team Addresses GDOT Comments on Quality Management Plan General Provisions	2.00d	2.00d	Dec-07-2023	Dec-08-2023	37.00d	0%	0016618-5-DAY WEEK (NO WEATHER)																	
A1410	GDOT Reviews/Accepts Quality Management Plan General Provisions	10.00d	10.00d	Dec-11-2023	Dec-22-2023	37.00d	0%	0016618-5-DAY WEEK (NO WEATHER)																	
Administrative Quality Management Plan (AQMP)		27.00d	27.00d	Nov-16-2023	Dec-22-2023	37.00d		0016618-5-DAY WEEK (NO WEATHER)																	
A1420	DB Team Prepares Administrative Quality Management Plan	5.00d	5.00d	Nov-16-2023	Nov-22-2023	37.00d	0%	0016618-5-DAY WEEK (NO WEATHER)																	
A1430	GDOT Reviews/Comments on Administrative Quality Management Plan	10.00d	10.00d	Nov-23-2023	Dec-06-2023	37.00d	0%	0016618-5-DAY WEEK (NO WEATHER)																	
A1440	DB Team Addresses GDOT Comments on Administrative Quality Management Plan	2.00d	2.00d	Dec-07-2023	Dec-08-2023	37.00d	0%	0016618-5-DAY WEEK (NO WEATHER)																	
A1450	GDOT Reviews/Accepts Administrative Quality Management Plan	10.00d	10.00d	Dec-11-2023	Dec-22-2023	37.00d	0%	0016618-5-DAY WEEK (NO WEATHER)																	
Design Quality Management Plan (DQMP)		27.00d	27.00d	Nov-16-2023	Dec-22-2023	37.00d		0016618-5-DAY WEEK (NO WEATHER)																	
A1460	DB Team Prepares Design Quality Management Plan	5.00d	5.00d	Nov-16-2023	Nov-22-2023	37.00d	0%	0016618-5-DAY WEEK (NO WEATHER)																	
A1470	GDOT Reviews/Comments on Design Quality Management Plan	10.00d	10.00d	Nov-23-2023	Dec-06-2023	37.00d	0%	0016618-5-DAY WEEK (NO WEATHER)																	
A1480	DB Team Addresses GDOT Comments on Design Quality Management Plan	2.00d	2.00d	Dec-07-2023	Dec-08-2023	37.00d	0%	0016618-5-DAY WEEK (NO WEATHER)																	
A1490	GDOT Reviews/Accepts Design Quality Management Plan	10.00d	10.00d	Dec-11-2023	Dec-22-2023	37.00d	0%	0016618-5-DAY WEEK (NO WEATHER)																	
Construction Quality Management Plan (CQMP)		42.00d	42.00d	Nov-16-2023	Jan-12-2024	22.00d		0016618-5-DAY WEEK (NO WEATHER)																	
A1500	DB Team Prepares Construction Quality Management Plan	5.00d	5.00d	Nov-16-2023	Nov-22-2023	22.00d	0%	0016618-5-DAY WEEK (NO WEATHER)																	
A1510	GDOT Reviews/Comments on Construction Quality Management Plan	10.00d	10.00d	Nov-23-2023	Dec-06-2023	22.00d	0%	0016618-5-DAY WEEK (NO WEATHER)																	
A1520	DB Team Addresses GDOT Comments on Construction Quality Management Plan	2.00d	2.00d	Dec-07-2023	Dec-08-2023	22.00d	0%	0016618-5-DAY WEEK (NO WEATHER)																	
A1530	GDOT Reviews/Accepts Construction Quality Management Plan	10.00d	10.00d	Dec-11-2023	Dec-22-2023	37.00d	0%	0016618-5-DAY WEEK (NO WEATHER)																	
A4360	FHWA Reviews/Accepts Construction Quality Management Plan	25.00d	25.00d	Dec-11-2023	Jan-12-2024	22.00d	0%	0016618-5-DAY WEEK (NO WEATHER)																	
Basis of D&C		57.00d	57.00d	Nov-16-2023	Feb-02-2024	7.00d		0016618-5-DAY WEEK (NO WEATHER)																	
A1540	DB Team Prepares Basis of Design and Construction	5.00d	5.00d	Nov-16-2023	Nov-22-2023	7.00d	0%	0016618-5-DAY WEEK (NO WEATHER)																	
A1550	GDOT Reviews/Comments on Basis of Design and Construction	25.00d	25.00d	Nov-23-2023	Dec-27-2023	7.00d	0%	0016618-5-DAY WEEK (NO WEATHER)																	
A1560	DB Team Addresses GDOT Comments on Basis of Design and Construction	2.00d	2.00d	Dec-28-2023	Dec-29-2023	7.00d	0%	0016618-5-DAY WEEK (NO WEATHER)																	
A1570	GDOT Reviews/Accepts Basis of Design and Construction	25.00d	25.00d	Jan-01-2024	Feb-02-2024	7.00d	0%	0016618-5-DAY WEEK (NO WEATHER)																	
A1580	FHWA Reviews/Accepts Basis of Design and Construction	25.00d	25.00d	Jan-01-2024	Feb-02-2024	7.00d	0%	0016618-5-DAY WEEK (NO WEATHER)																	
Utility Management Plan		27.00d	27.00d	Nov-16-2023	Dec-22-2023	26.00d		0016618-5-DAY WEEK (NO WEATHER)																	
A1590	DB Team Prepares Utility Management Plan	5.00d	5.00d	Nov-16-2023	Nov-22-2023	26.00d	0%	0016618-5-DAY WEEK (NO WEATHER)																	
A1600	GDOT Reviews/Comments on Utility Management Plan	10.00d	10.00d	Nov-23-2023	Dec-06-2023	26.00d	0%	0016618-5-DAY WEEK (NO WEATHER)																	
A1610	DB Team Addresses GDOT Comments on Utility Management Plan	2.00d	2.00d	Dec-07-2023	Dec-08-2023	26.00d	0%	0016618-5-DAY WEEK (NO WEATHER)																	
A1620	GDOT Reviews/Accepts Utility Management Plan	10.00d	10.00d	Dec-11-2023	Dec-22-2023	26.00d	0%	0016618-5-DAY WEEK (NO WEATHER)																	
Transportation Management Plan (TMP)		37.00d	37.00d	Nov-16-2023	Jan-05-2024	27.00d		0016618-5-DAY WEEK (NO WEATHER)																	
A1630	DB Team Prepares Transportation Management Plan	5.00d	5.00d	Nov-16-2023	Nov-22-2023	27.00d	0%	0016618-5-DAY WEEK (NO WEATHER)																	
A1640	GDOT Reviews/Comments on Transportation Management Plan	15.00d	15.00d	Nov-23-2023	Dec-13-2023	27.00d	0%	0016618-5-DAY WEEK (NO WEATHER)																	
A1650	DB Team Addresses GDOT Comments on Transportation Management Plan	2.00d	2.00d	Dec-14-2023	Dec-15-2023	27.00d	0%	0016618-5-DAY WEEK (NO WEATHER)																	
A1660	GDOT Reviews/Accepts Transportation Management Plan	15.00d	15.00d	Dec-18-2023	Jan-05-2024	27.00d	0%	0016618-5-DAY WEEK (NO WEATHER)																	
Comprehensive Environmental Protection Plan (CEPP)		37.00d	37.00d	Nov-16-2023	Jan-05-2024	27.00d		0016618-5-DAY WEEK (NO WEATHER)																	

Primary Baseline
 Critical Remaining Work
 Actual Work
 Remaining Work
 Summary
 Baseline Milestone
 Milestone

US 280 Widening and Interchange Improvements
Design-Build
PI No. 0016618, Bryan County

Data Date: Aug-18-2023



Matthews-McLendon Joint Venture

Proposal Schedule

Submitted: August 10, 2023
Page 3 of 11

Activity ID	Activity Name	Original Duration	Remaining Duration	Start	Finish	Total Float	Physical % Complete	Calendar	2024				2025				2026				2027
									Q4	Q1	Q2	Q3	Q4	Q1	Q2	Q3	Q4	Q1	Q2	Q3	Q4
A1670	DB Team Prepares Comprehensive Environmental Protection Plan	5.00d	5.00d	Nov-16-2023	Nov-22-2023	27.00d	0%	0016618-5-DAY WEEK (NO WEATHER)													
A1680	GDOT Reviews/Comments on Comprehensive Environmental Protection Plan	15.00d	15.00d	Nov-23-2023	Dec-13-2023	27.00d	0%	0016618-5-DAY WEEK (NO WEATHER)													
A1690	DB Team Addresses GDOT Comments on Comprehensive Environmental Protection Plan	2.00d	2.00d	Dec-14-2023	Dec-15-2023	27.00d	0%	0016618-5-DAY WEEK (NO WEATHER)													
A1700	GDOT Reviews/Accepts Comprehensive Environmental Protection Plan	15.00d	15.00d	Dec-18-2023	Jan-05-2024	27.00d	0%	0016618-5-DAY WEEK (NO WEATHER)													
Maintenance Management Plan (MMP)		62.00d	62.00d	Nov-16-2023	Jan-16-2024	28.00d															
A1710	DB Team Prepares Maintenance Management Plan	5.00d	5.00d	Nov-16-2023	Nov-22-2023	22.00d	0%	0016618-5-DAY WEEK (NO WEATHER)													
A1720	GDOT Reviews/Comments on Maintenance Management Plan	30.00d	30.00d	Nov-23-2023	Dec-22-2023	30.00d	0%	0016618-7-DAY WEEK (NO HOLIDAYS)													
A1730	DB Team Addresses GDOT Comments on Maintenance Management Plan	2.00d	2.00d	Dec-25-2023	Dec-26-2023	20.00d	0%	0016618-5-DAY WEEK (NO WEATHER)													
A1740	GDOT Reviews/Accepts Maintenance Management Plan	15.00d	15.00d	Dec-27-2023	Jan-16-2024	20.00d	0%	0016618-5-DAY WEEK (NO WEATHER)													
Safety Plan		27.00d	27.00d	Nov-16-2023	Dec-22-2023	37.00d		0016618-5-DAY WEEK (NO WEATHER)													
A1750	DB Team Prepares Safety Plan	5.00d	5.00d	Nov-16-2023	Nov-22-2023	37.00d	0%	0016618-5-DAY WEEK (NO WEATHER)													
A1760	GDOT Reviews/Comments on Safety Plan	10.00d	10.00d	Nov-23-2023	Dec-06-2023	37.00d	0%	0016618-5-DAY WEEK (NO WEATHER)													
A1770	DB Team Addresses GDOT Comments on Safety Plan	2.00d	2.00d	Dec-07-2023	Dec-08-2023	37.00d	0%	0016618-5-DAY WEEK (NO WEATHER)													
A1780	GDOT Reviews/Accepts Safety Plan	10.00d	10.00d	Dec-11-2023	Dec-22-2023	37.00d	0%	0016618-5-DAY WEEK (NO WEATHER)													
Project Schedule Workplan		27.00d	27.00d	Nov-16-2023	Dec-22-2023	12.00d		0016618-5-DAY WEEK (NO WEATHER)													
A1790	DB Team Prepares Project Schedule Workplan	5.00d	5.00d	Nov-16-2023	Nov-22-2023	12.00d	0%	0016618-5-DAY WEEK (NO WEATHER)													
A1800	GDOT Reviews/Comments on Project Schedule Workplan	10.00d	10.00d	Nov-23-2023	Dec-06-2023	12.00d	0%	0016618-5-DAY WEEK (NO WEATHER)													
A1810	DB Team Addresses GDOT Comments on Project Schedule Workplan	2.00d	2.00d	Dec-07-2023	Dec-08-2023	12.00d	0%	0016618-5-DAY WEEK (NO WEATHER)													
A1820	GDOT Reviews/Accepts Project Schedule Workplan	10.00d	10.00d	Dec-11-2023	Dec-22-2023	12.00d	0%	0016618-5-DAY WEEK (NO WEATHER)													
Design and Construction (D&C) Closeout Plan		27.00d	27.00d	Feb-05-2024	Mar-12-2024	68.00d		0016618-5-DAY WEEK (NO WEATHER)													
A1830	DB Team Prepares Design and Construction Closeout Plan	5.00d	5.00d	Feb-05-2024	Feb-09-2024	68.00d	0%	0016618-5-DAY WEEK (NO WEATHER)													
A1840	GDOT Reviews/Comments on Design and Construction Closeout Plan	10.00d	10.00d	Feb-12-2024	Feb-23-2024	68.00d	0%	0016618-5-DAY WEEK (NO WEATHER)													
A1850	DB Team Addresses GDOT Comments on Design and Construction Closeout Plan	2.00d	2.00d	Feb-26-2024	Feb-27-2024	68.00d	0%	0016618-5-DAY WEEK (NO WEATHER)													
A1860	GDOT Reviews/Accepts Design and Construction Closeout Plan	10.00d	10.00d	Feb-28-2024	Mar-12-2024	68.00d	0%	0016618-5-DAY WEEK (NO WEATHER)													
Administrative and Construction Plans		77.00d	77.00d	Feb-05-2024	Apr-21-2024	54.00d															
Baseline Element Condition Report (BECR)		45.00d	45.00d	Feb-05-2024	Apr-05-2024	50.00d		0016618-5-DAY WEEK (NO WEATHER)													
A1870	DB Team Prepares Baseline Elements Condition Report	10.00d	10.00d	Feb-05-2024	Feb-16-2024	50.00d	0%	0016618-5-DAY WEEK (NO WEATHER)													
A1880	GDOT Reviews/Comments on Baseline Elements Condition Report	15.00d	15.00d	Feb-19-2024	Mar-08-2024	50.00d	0%	0016618-5-DAY WEEK (NO WEATHER)													
A1890	DB Team Addresses GDOT Comments on Baseline Elements Condition Report	5.00d	5.00d	Mar-11-2024	Mar-15-2024	50.00d	0%	0016618-5-DAY WEEK (NO WEATHER)													
A1900	GDOT Reviews/Accepts Baseline Elements Condition Report	15.00d	15.00d	Mar-18-2024	Apr-05-2024	50.00d	0%	0016618-5-DAY WEEK (NO WEATHER)													
Hazardous Materials Plan		77.00d	77.00d	Feb-05-2024	Apr-21-2024	54.00d															
A1910	DB Team Prepares Hazardous Materials Plan	10.00d	10.00d	Feb-05-2024	Feb-16-2024	36.00d	0%	0016618-5-DAY WEEK (NO WEATHER)													
A1920	GDOT Reviews/Comments on Hazardous Materials Plan	30.00d	30.00d	Feb-17-2024	Mar-17-2024	52.00d	0%	0016618-7-DAY WEEK (NO HOLIDAYS)													
A1930	DB Team Addresses GDOT Comments on Hazardous Materials Plan	5.00d	5.00d	Mar-18-2024	Mar-22-2024	38.00d	0%	0016618-5-DAY WEEK (NO WEATHER)													
A1940	GDOT Reviews/Accepts Hazardous Materials Plan	30.00d	30.00d	Mar-23-2024	Apr-21-2024	54.00d	0%	0016618-7-DAY WEEK (NO HOLIDAYS)													
Design Work		88.00d	88.00d	Feb-03-2024	Apr-30-2024	45.00d															
Soil Survey		69.00d	69.00d	Feb-03-2024	Apr-11-2024	64.00d															
A1990	Perform Geotechnical Borings - Soil Survey	10.00d	10.00d	Feb-03-2024	Feb-12-2024	68.00d	0%	0016618-7-DAY WEEK (NO HOLIDAYS)													
A2000	Soil Testing - Soil Survey	10.00d	10.00d	Feb-13-2024	Feb-22-2024	68.00d	0%	0016618-7-DAY WEEK (NO HOLIDAYS)													
A2010	DB Team Prepares and Submits - Soil Survey	5.00d	5.00d	Feb-23-2024	Feb-27-2024	68.00d	0%	0016618-7-DAY WEEK (NO HOLIDAYS)													
A2020	GDOT Reviews/Comments - Soil Survey	15.00d	15.00d	Feb-28-2024	Mar-19-2024	48.00d	0%	0016618-5-DAY WEEK (NO WEATHER)													
A2030	DB Team Addresses Comments and Resubmits - Soil Survey	2.00d	2.00d	Mar-20-2024	Mar-21-2024	66.00d	0%	0016618-7-DAY WEEK (NO HOLIDAYS)													
A2040	GDOT Reviews and Accepts - Soil Survey	15.00d	15.00d	Mar-22-2024	Apr-11-2024	46.00d	0%	0016618-5-DAY WEEK (NO WEATHER)													
Drainage Design Report		61.00d	61.00d	Feb-03-2024	Apr-03-2024	72.00d															
A2050	DB Team Prepares and Submits - Drainage Design Report	5.00d	5.00d	Feb-03-2024	Feb-07-2024	74.00d	0%	0016618-7-DAY WEEK (NO HOLIDAYS)													
A2060	GDOT Reviews/Comments - Drainage Design Report	30.00d	30.00d	Feb-08-2024	Mar-08-2024	74.00d	0%	0016618-7-DAY WEEK (NO HOLIDAYS)													

█ Primary Baseline
 █ Critical Remaining Work
 Summary
█ Actual Work
 ◆ Baseline Milestone
█ Remaining Work
 ◆ Milestone

US 280 Widening and Interchange Improvements
Design-Build
PI No. 0016618, Bryan County

Data Date: Aug-18-2023



Activity ID	Activity Name	Original Duration	Remaining Duration	Start	Finish	Total Float	Physical % Complete	Calendar	2024				2025				2026				2027
									Q4	Q1	Q2	Q3	Q4	Q1	Q2	Q3	Q4	Q1	Q2	Q3	Q4
A2070	DB Team Addresses Comments and Resubmits - Drainage Design Report	5.00d	5.00d	Mar-09-2024	Mar-13-2024	74.00d	0%	0016618-7-DAY WEEK (NO HOLIDAYS)													
A2080	GDOT Reviews and Accepts - Drainage Design Report	15.00d	15.00d	Mar-14-2024	Apr-03-2024	52.00d	0%	0016618-5-DAY WEEK (NO WEATHER)													
Post-Construction Stormwater Design Report		84.00d	84.00d	Feb-03-2024	Apr-26-2024	49.00d															
A2090	DB Team Prepares and Submits - Post-Construction Stormwater Design Report	30.00d	30.00d	Feb-03-2024	Mar-03-2024	49.00d	0%	0016618-7-DAY WEEK (NO HOLIDAYS)													
A2100	GDOT Reviews/Comments - Post-Construction Stormwater Design Report	30.00d	30.00d	Mar-04-2024	Apr-02-2024	49.00d	0%	0016618-7-DAY WEEK (NO HOLIDAYS)													
A2110	DB Team Addresses Comments and Resubmits - Post-Construction Stormwater Design Report	5.00d	5.00d	Apr-03-2024	Apr-07-2024	49.00d	0%	0016618-7-DAY WEEK (NO HOLIDAYS)													
A2120	GDOT Reviews and Accepts - Post-Construction Stormwater Design Report	15.00d	15.00d	Apr-08-2024	Apr-26-2024	35.00d	0%	0016618-5-DAY WEEK (NO WEATHER)													
US 280		88.00d	88.00d	Feb-03-2024	Apr-30-2024	45.00d															
Preliminary Roadway		45.00d	45.00d	Feb-03-2024	Mar-18-2024	47.00d															
A2130	DB Team Prepares and Submits - Preliminary Roadway Plans - US 280	15.00d	15.00d	Feb-03-2024	Feb-17-2024	47.00d	0%	0016618-7-DAY WEEK (NO HOLIDAYS)													
A2140	GDOT Reviews/Comments - Preliminary Roadway Plans - US 280	30.00d	30.00d	Feb-18-2024	Mar-18-2024	47.00d	0%	0016618-7-DAY WEEK (NO HOLIDAYS)													
Final Roadway		43.00d	43.00d	Mar-19-2024	Apr-30-2024	45.00d															
A2170	DB Team Prepares and Submits - Final Roadway Plans - US 280	10.00d	10.00d	Mar-19-2024	Mar-28-2024	47.00d	0%	0016618-7-DAY WEEK (NO HOLIDAYS)													
A2180	GDOT Reviews/Comments - Final Roadway Plans - US 280	15.00d	15.00d	Mar-29-2024	Apr-18-2024	33.00d	0%	0016618-5-DAY WEEK (NO WEATHER)													
A2210	DB Team Prepares and Submits - RFC Roadway Plans - US 280	5.00d	5.00d	Apr-19-2024	Apr-23-2024	47.00d	0%	0016618-7-DAY WEEK (NO HOLIDAYS)													
A2220	GDOT Reviews and Accepts - RFC Roadway Plans - US 280	5.00d	5.00d	Apr-24-2024	Apr-30-2024	33.00d	0%	0016618-5-DAY WEEK (NO WEATHER)													
Signal Plans		70.00d	70.00d	Feb-03-2024	Apr-12-2024	63.00d															
A2230	DB Team Prepares and Submits - Preliminary Signal Plans	10.00d	10.00d	Feb-03-2024	Feb-12-2024	64.00d	0%	0016618-7-DAY WEEK (NO HOLIDAYS)													
A2240	GDOT Reviews/Comments - Preliminary Signal Plans	30.00d	30.00d	Feb-13-2024	Mar-13-2024	64.00d	0%	0016618-7-DAY WEEK (NO HOLIDAYS)													
A2250	DB Team Prepares and Submits - Final Signal Plans	3.00d	3.00d	Mar-14-2024	Mar-16-2024	64.00d	0%	0016618-7-DAY WEEK (NO HOLIDAYS)													
A2260	GDOT Reviews/Comments - Final Signal Plans	15.00d	15.00d	Mar-18-2024	Apr-05-2024	45.00d	0%	0016618-5-DAY WEEK (NO WEATHER)													
A2270	DB Team Prepares and Submits - RFC Signal Plans	2.00d	2.00d	Apr-06-2024	Apr-07-2024	63.00d	0%	0016618-7-DAY WEEK (NO HOLIDAYS)													
A2280	GDOT Reviews and Accepts - RFC Signal Plans	5.00d	5.00d	Apr-08-2024	Apr-12-2024	45.00d	0%	0016618-5-DAY WEEK (NO WEATHER)													
Environmental and Permitting		174.00d	174.00d	Nov-23-2023	May-14-2024	55.00d															
Environmental Change Table		3.00d	3.00d	Nov-23-2023	Nov-25-2023	55.00d															
A2410	DB Team Prepares Updated Environmental Change Table	3.00d	3.00d	Nov-23-2023	Nov-25-2023	55.00d	0%	0016618-7-DAY WEEK (NO HOLIDAYS)													
USACE 404 Permit		171.00d	171.00d	Nov-26-2023	May-14-2024	55.00d															
A2420	DB Team Prepares USACE General Permit Application	14.00d	14.00d	Nov-26-2023	Dec-09-2023	64.00d	0%	0016618-7-DAY WEEK (NO HOLIDAYS)													
A2430	GDOT Review Comment on USACE Genral Permit Application	30.00d	30.00d	Dec-10-2023	Jan-08-2024	64.00d	0%	0016618-7-DAY WEEK (NO HOLIDAYS)													
A2510	DB Team Addresses GDOT Comments on USACE General Permit Application	14.00d	14.00d	Jan-09-2024	Jan-22-2024	64.00d	0%	0016618-7-DAY WEEK (NO HOLIDAYS)													
A2520	GDOT Review/Accepts USACE General Permit Application	14.00d	14.00d	Jan-23-2024	Feb-05-2024	64.00d	0%	0016618-7-DAY WEEK (NO HOLIDAYS)													
A2440	USACE Reviews and Approves General Permit	90.00d	90.00d	Feb-15-2024	May-14-2024	55.00d	0%	0016618-7-DAY WEEK (NO HOLIDAYS)													
Ecology Addendum		81.00d	81.00d	Nov-26-2023	Feb-14-2024	55.00d															
A9170	GDOT Prepares Ecology Addendum	30.00d	30.00d	Nov-26-2023	Dec-25-2023	55.00d	0%	0016618-7-DAY WEEK (NO HOLIDAYS)													
A9180	GDOT Review/Comment on Ecology Addendum	30.00d	30.00d	Dec-26-2023	Jan-24-2024	55.00d	0%	0016618-7-DAY WEEK (NO HOLIDAYS)													
A9190	GDOT Addresses Comments on Ecology Addendum	7.00d	7.00d	Jan-25-2024	Jan-31-2024	55.00d	0%	0016618-7-DAY WEEK (NO HOLIDAYS)													
A9200	GDOT Review/Accepts Ecology Addendum	14.00d	14.00d	Feb-01-2024	Feb-14-2024	55.00d	0%	0016618-7-DAY WEEK (NO HOLIDAYS)													
GA EPD US 280		27.00d	27.00d	Mar-19-2024	Apr-14-2024	61.00d															
Erosion Sediment and Pollution Control Plan (ESPCP) - US 280		12.00d	12.00d	Mar-19-2024	Mar-30-2024	61.00d															
A2450	DB Team Prepares and Submits Erosion Sediment and Pollution Control Plan (ESPCP) - US 280	5.00d	5.00d	Mar-19-2024	Mar-23-2024	61.00d	0%	0016618-7-DAY WEEK (NO HOLIDAYS)													
A2460	GA EPD Reviews/Comments on Erosion Sediment and Pollution Control Plan (ESPCP) - US 280	5.00d	5.00d	Mar-24-2024	Mar-28-2024	61.00d	0%	0016618-7-DAY WEEK (NO HOLIDAYS)													
A2470	DB Team Addresses GA EPD Comments on Erosion Sediment and Pollution Control Plan (ESPCP) - US 280	1.00d	1.00d	Mar-29-2024	Mar-29-2024	61.00d	0%	0016618-7-DAY WEEK (NO HOLIDAYS)													
A2480	DB Team Prepares RFC Erosion Sediment and Pollution Control Plan (ESPCP) - US 280	1.00d	1.00d	Mar-30-2024	Mar-30-2024	61.00d	0%	0016618-7-DAY WEEK (NO HOLIDAYS)													
Notice of Intent (NOI) - US 280		15.00d	15.00d	Mar-31-2024	Apr-14-2024	61.00d															
A2490	DB Teams Prepares Notice of Intent (NOI) - US 280	1.00d	1.00d	Mar-31-2024	Mar-31-2024	61.00d	0%	0016618-7-DAY WEEK (NO HOLIDAYS)													
A2500	GA EPD Reviews and Approves Notice of Intent (NOI) - US 280	14.00d	14.00d	Apr-01-2024	Apr-14-2024	61.00d	0%	0016618-7-DAY WEEK (NO HOLIDAYS)													
Right-of-Way		183.00d	183.00d	Jun-15-2024	Dec-15-2024	0.00d															

█ Primary Baseline █ Critical Remaining Work Summary
█ Actual Work ◆ Baseline Milestone
█ Remaining Work ◆ Milestone

US 280 Widening and Interchange Improvements
Design-Build
PI No. 0016618, Bryan County

Data Date: Aug-18-2023



Activity ID	Activity Name	Original Duration	Remaining Duration	Start	Finish	Total Float	Physical % Complete	Calendar	2024				2025				2026				2027
									Q4	Q1	Q2	Q3	Q4	Q1	Q2	Q3	Q4	Q1	Q2	Q3	Q4
A4720	Right-of-Way Parcel Availability Date - Group A	0.00d	0.00d	Jun-15-2024*		0.00d	0%	0016618-7-DAY WEEK (NO HOLIDAYS)													
A4730	Right-of-Way Parcel Availability Date - Group B	0.00d	0.00d	Sep-15-2024*		0.00d	0%	0016618-7-DAY WEEK (NO HOLIDAYS)													
A4740	Right-of-Way Parcel Availability Date - Group C	0.00d	0.00d	Dec-15-2024*		0.00d	0%	0016618-7-DAY WEEK (NO HOLIDAYS)													
Utility Adjustment Work		201.00d	201.00d	Nov-16-2023	Jun-03-2024	11.00d															
Emergency Utility Response Information (EURI)		15.00d	15.00d	Nov-23-2023	Dec-07-2023	53.00d															
A2590	DB Team Prepares and Submits - Emergency Utility Response Information (EURI)	1.00d	1.00d	Nov-23-2023	Nov-23-2023	37.00d	0%	0016618-5-DAY WEEK (NO WEATHER)													
A2600	GDOT Reviews and Accepts - Emergency Utility Response Information (EURI)	14.00d	14.00d	Nov-24-2023	Dec-07-2023	53.00d	0%	0016618-7-DAY WEEK (NO HOLIDAYS)													
Utility Kick-Off Meeting		5.00d	5.00d	Nov-16-2023	Nov-22-2023	37.00d															
A2610	DB Team Prepares for and Hosts Utility Kick-Off Meeting	5.00d	5.00d	Nov-16-2023	Nov-22-2023	37.00d	0%	0016618-5-DAY WEEK (NO WEATHER)													
SUE QL-B Verification		41.00d	41.00d	Nov-16-2023	Dec-26-2023	9.00d															
A2620	DB Team Prepares and Submits - URPN Letter 1	2.00d	2.00d	Nov-16-2023	Nov-17-2023	7.00d	0%	0016618-5-DAY WEEK (NO WEATHER)													
A2630	GDOT Reviews and Accepts - URPN Letter 1	7.00d	7.00d	Nov-18-2023	Nov-24-2023	11.00d	0%	0016618-7-DAY WEEK (NO HOLIDAYS)													
A2640	DB Team Distributes the Accepted URPN Letter 1 and SUE QL-B to Utility Owners	1.00d	1.00d	Nov-27-2023	Nov-27-2023	7.00d	0%	0016618-5-DAY WEEK (NO WEATHER)													
A2650	Utility Owners Perform Supplemental Verification of QL-B	5.00d	5.00d	Nov-28-2023	Dec-04-2023	7.00d	0%	0016618-5-DAY WEEK (NO WEATHER)													
A2660	DB Team Performs Supplemental Verification of QL-B	5.00d	5.00d	Dec-05-2023	Dec-11-2023	7.00d	0%	0016618-5-DAY WEEK (NO WEATHER)													
A2670	DB Team Submits Supplemental QL-B Verification to GDOT	1.00d	1.00d	Dec-12-2023	Dec-12-2023	7.00d	0%	0016618-5-DAY WEEK (NO WEATHER)													
A2680	GDOT Reviews and Accepts - Supplemental QL-B Verification	14.00d	14.00d	Dec-13-2023	Dec-26-2023	9.00d	0%	0016618-7-DAY WEEK (NO HOLIDAYS)													
Utility Impact Analysis (UIA)		41.00d	41.00d	Dec-27-2023	Feb-05-2024	9.00d															
A2690	DB Team Prepares and Submits - UIA	7.00d	7.00d	Dec-27-2023	Jan-04-2024	7.00d	0%	0016618-5-DAY WEEK (NO WEATHER)													
A2700	GDOT Reviews and Accepts - UIA	14.00d	14.00d	Jan-05-2024	Jan-18-2024	11.00d	0%	0016618-7-DAY WEEK (NO HOLIDAYS)													
A2710	DB Team Performs and Submits SUE QL-A Investigations	7.00d	7.00d	Jan-19-2024	Jan-29-2024	7.00d	0%	0016618-5-DAY WEEK (NO WEATHER)													
A2720	GDOT Reviews and Accepts SUE QL-A Investigation	7.00d	7.00d	Jan-30-2024	Feb-05-2024	9.00d	0%	0016618-7-DAY WEEK (NO HOLIDAYS)													
Utility Status Report		37.00d	37.00d	Feb-06-2024	Mar-13-2024	93.00d															
A2730	DB Team Prepares and Submits - Utility Status Report	5.00d	5.00d	Feb-06-2024	Feb-12-2024	67.00d	0%	0016618-5-DAY WEEK (NO WEATHER)													
A2740	GDOT Reviews and Comments - Utility Status Report	14.00d	14.00d	Feb-13-2024	Feb-26-2024	93.00d	0%	0016618-7-DAY WEEK (NO HOLIDAYS)													
A2750	DB Team Addresses Comments and Re-Submits - Utility Status Report	2.00d	2.00d	Feb-27-2024	Feb-28-2024	67.00d	0%	0016618-5-DAY WEEK (NO WEATHER)													
A2760	GDOT Reviews and Accepts - Utility Status Report	14.00d	14.00d	Feb-29-2024	Mar-13-2024	93.00d	0%	0016618-7-DAY WEEK (NO HOLIDAYS)													
Utility Adjustment Plans and Utility Work Plans		119.00d	119.00d	Feb-06-2024	Jun-03-2024	11.00d															
A4370	DB Team Prepares UAPP	20.00d	20.00d	Feb-06-2024	Mar-04-2024	7.00d	0%	0016618-5-DAY WEEK (NO WEATHER)													
A4380	GDOT Reviews and Comments - UAPP	21.00d	21.00d	Mar-05-2024	Mar-25-2024	9.00d	0%	0016618-7-DAY WEEK (NO HOLIDAYS)													
Bryan County Water and Sewer (BCWS)		68.00d	68.00d	Mar-26-2024	Jun-01-2024	13.00d															
BCWS Utility Adjustment Plan (UAP) and GUPS Permit		35.00d	35.00d	Mar-26-2024	Apr-29-2024	13.00d															
A2790	DB Team Prepares - Final Relocation Plan - BCWS	10.00d	10.00d	Mar-26-2024	Apr-08-2024	9.00d	0%	0016618-5-DAY WEEK (NO WEATHER)													
A2810	Utility Owner Submits - GUPS Permit - BCWS	5.00d	5.00d	Apr-09-2024	Apr-15-2024	9.00d	0%	0016618-5-DAY WEEK (NO WEATHER)													
A4350	GDOT Reviews and Accepts - GUPS Permit - BCWS	14.00d	14.00d	Apr-16-2024	Apr-29-2024	13.00d	0%	0016618-7-DAY WEEK (NO HOLIDAYS)													
BCWS Utility Work Plan and Post-Let Certification		33.00d	33.00d	Apr-30-2024	Jun-01-2024	13.00d															
A2820	DB Team Prepares and Submits - Utility Work Plan - BCWS	5.00d	5.00d	Apr-30-2024	May-06-2024	9.00d	0%	0016618-5-DAY WEEK (NO WEATHER)													
A2830	GDOT Reviews and Accepts - Utility Work Plan - BCWS	21.00d	21.00d	May-07-2024	May-27-2024	13.00d	0%	0016618-7-DAY WEEK (NO HOLIDAYS)													
A2840	GDOT Issues Post-Let Utility Certification - BCWS	5.00d	5.00d	May-28-2024	Jun-01-2024	13.00d	0%	0016618-7-DAY WEEK (NO HOLIDAYS)													
AT&T Distribution		68.00d	68.00d	Mar-26-2024	Jun-01-2024	13.00d															
AT&T Utility Adjustment Plan (UAP) and GUPS Permit		35.00d	35.00d	Mar-26-2024	Apr-29-2024	13.00d															
A4390	DB Team Prepares - Final Relocation Plan - AT&T	10.00d	10.00d	Mar-26-2024	Apr-08-2024	9.00d	0%	0016618-5-DAY WEEK (NO WEATHER)													
A4400	Utility Owner Submits - GUPS Permit - AT&T	5.00d	5.00d	Apr-09-2024	Apr-15-2024	9.00d	0%	0016618-5-DAY WEEK (NO WEATHER)													
A4410	GDOT Reviews and Accepts - GUPS Permit - AT&T	14.00d	14.00d	Apr-16-2024	Apr-29-2024	13.00d	0%	0016618-7-DAY WEEK (NO HOLIDAYS)													
AT&T Utility Work Plan and Post-Let Certification		33.00d	33.00d	Apr-30-2024	Jun-01-2024	13.00d															
A3150	DB Team Prepares and Submits - Utility Work Plan - AT&T	5.00d	5.00d	Apr-30-2024	May-06-2024	9.00d	0%	0016618-5-DAY WEEK (NO WEATHER)													
A3160	GDOT Reviews and Accepts - Utility Work Plan - AT&T	21.00d	21.00d	May-07-2024	May-27-2024	13.00d	0%	0016618-7-DAY WEEK (NO HOLIDAYS)													

█ Primary Baseline
 █ Critical Remaining Work
 Summary
█ Actual Work
 ◆ Baseline Milestone
█ Remaining Work
 ◆ Milestone

US 280 Widening and Interchange Improvements
Design-Build
PI No. 0016618, Bryan County

Data Date: Aug-18-2023



Matthews-McLendon Joint Venture

Proposal Schedule

Activity ID	Activity Name	Original Duration	Remaining Duration	Start	Finish	Total Float	Physical % Complete	Calendar	2024				2025				2026				2027
									Q4	Q1	Q2	Q3	Q4	Q1	Q2	Q3	Q4	Q1	Q2	Q3	Q4
A3170	GDOT Issues Post-Let Utility Certification - AT&T	5.00d	5.00d	May-28-2024	Jun-01-2024	13.00d	0%	0016618-7-DAY WEEK (NO HOLIDAYS)													
Canoochee EMC (CEMC)		70.00d	70.00d	Mar-26-2024	Jun-03-2024	11.00d															
CEMC Utility Adjustment Plan (UAP) and GUPS Permit		37.00d	37.00d	Mar-26-2024	May-01-2024	11.00d															
A4570	DB Team Prepares - Final Relocation Plan - CEMC	10.00d	10.00d	Mar-26-2024	Apr-08-2024	7.00d	0%	0016618-5-DAY WEEK (NO WEATHER)													
A4580	Utility Owner Submits - GUPS Permit - CEMC	14.00d	14.00d	Apr-09-2024	Apr-26-2024	7.00d	0%	0016618-5-DAY WEEK (NO WEATHER)													
A4590	GDOT Reviews and Accepts - GUPS Permit - CEMC	5.00d	5.00d	Apr-27-2024	May-01-2024	11.00d	0%	0016618-7-DAY WEEK (NO HOLIDAYS)													
CEMC Utility Work Plan and Post-Let Certification		33.00d	33.00d	May-02-2024	Jun-03-2024	11.00d															
A3180	DB Team Prepares and Submits - Utility Work Plan - CEMC	5.00d	5.00d	May-02-2024	May-08-2024	7.00d	0%	0016618-5-DAY WEEK (NO WEATHER)													
A3190	GDOT Reviews and Accepts - Utility Work Plan - CEMC	21.00d	21.00d	May-09-2024	May-29-2024	11.00d	0%	0016618-7-DAY WEEK (NO HOLIDAYS)													
A3200	GDOT Issues Post-Let Utility Certification - CEMC	5.00d	5.00d	May-30-2024	Jun-03-2024	11.00d	0%	0016618-7-DAY WEEK (NO HOLIDAYS)													
City of Claxton - Gas (CG)		70.00d	70.00d	Mar-26-2024	Jun-03-2024	11.00d															
CG Utility Adjustment Plan (UAP) and GUPS Permit		37.00d	37.00d	Mar-26-2024	May-01-2024	11.00d															
A4600	DB Team Prepares - Final Relocation Plan - CG	10.00d	10.00d	Mar-26-2024	Apr-08-2024	7.00d	0%	0016618-5-DAY WEEK (NO WEATHER)													
A4610	Utility Owner Submits - GUPS Permit - CG	14.00d	14.00d	Apr-09-2024	Apr-26-2024	7.00d	0%	0016618-5-DAY WEEK (NO WEATHER)													
A4620	GDOT Reviews and Accepts - GUPS Permit - CG	5.00d	5.00d	Apr-27-2024	May-01-2024	11.00d	0%	0016618-7-DAY WEEK (NO HOLIDAYS)													
CG Utility Work Plan and Post-Let Certification		33.00d	33.00d	May-02-2024	Jun-03-2024	11.00d															
A3210	DB Team Prepares and Submits - Utility Work Plan - CG	5.00d	5.00d	May-02-2024	May-08-2024	7.00d	0%	0016618-5-DAY WEEK (NO WEATHER)													
A3220	GDOT Reviews and Accepts - Utility Work Plan - CG	21.00d	21.00d	May-09-2024	May-29-2024	11.00d	0%	0016618-7-DAY WEEK (NO HOLIDAYS)													
A3230	GDOT Issues Post-Let Utility Certification - CG	5.00d	5.00d	May-30-2024	Jun-03-2024	11.00d	0%	0016618-7-DAY WEEK (NO HOLIDAYS)													
Comcast		70.00d	70.00d	Mar-26-2024	Jun-03-2024	11.00d															
Comcast Utility Adjustment Plan (UAP) and GUPS Permit		37.00d	37.00d	Mar-26-2024	May-01-2024	11.00d															
A4630	DB Team Prepares - Final Relocation Plan - Comcast	10.00d	10.00d	Mar-26-2024	Apr-08-2024	7.00d	0%	0016618-5-DAY WEEK (NO WEATHER)													
A4640	Utility Owner Submits - GUPS Permit - Comcast	14.00d	14.00d	Apr-09-2024	Apr-26-2024	7.00d	0%	0016618-5-DAY WEEK (NO WEATHER)													
A4650	GDOT Reviews and Accepts - GUPS Permit - Comcast	5.00d	5.00d	Apr-27-2024	May-01-2024	11.00d	0%	0016618-7-DAY WEEK (NO HOLIDAYS)													
Comcast Utility Work Plan and Post-Let Certification		33.00d	33.00d	May-02-2024	Jun-03-2024	11.00d															
A3240	DB Team Prepares and Submits - Utility Work Plan - Comcast	5.00d	5.00d	May-02-2024	May-08-2024	7.00d	0%	0016618-5-DAY WEEK (NO WEATHER)													
A3250	GDOT Reviews and Accepts - Utility Work Plan - Comcast	21.00d	21.00d	May-09-2024	May-29-2024	11.00d	0%	0016618-7-DAY WEEK (NO HOLIDAYS)													
A3260	GDOT Issues Post-Let Utility Certification - Comcast	5.00d	5.00d	May-30-2024	Jun-03-2024	11.00d	0%	0016618-7-DAY WEEK (NO HOLIDAYS)													
Georgia Power Distribution (GPD)		70.00d	70.00d	Mar-26-2024	Jun-03-2024	11.00d															
GPD Utility Adjustment Plan (UAP) and GUPS Permit		37.00d	37.00d	Mar-26-2024	May-01-2024	11.00d															
A4660	DB Team Prepares - Final Relocation Plan - GPD	10.00d	10.00d	Mar-26-2024	Apr-08-2024	7.00d	0%	0016618-5-DAY WEEK (NO WEATHER)													
A4670	Utility Owner Submits - GUPS Permit - GPD	14.00d	14.00d	Apr-09-2024	Apr-26-2024	7.00d	0%	0016618-5-DAY WEEK (NO WEATHER)													
A4680	GDOT Reviews and Accepts - GUPS Permit - GPD	5.00d	5.00d	Apr-27-2024	May-01-2024	11.00d	0%	0016618-7-DAY WEEK (NO HOLIDAYS)													
GPD Utility Work Plan and Post-Let Certification		33.00d	33.00d	May-02-2024	Jun-03-2024	11.00d															
A3270	DB Team Prepares and Submits - Utility Work Plan - GPD	5.00d	5.00d	May-02-2024	May-08-2024	7.00d	0%	0016618-5-DAY WEEK (NO WEATHER)													
A3280	GDOT Reviews and Accepts - Utility Work Plan - GPD	21.00d	21.00d	May-09-2024	May-29-2024	11.00d	0%	0016618-7-DAY WEEK (NO HOLIDAYS)													
A3290	GDOT Issues Post-Let Utility Certification - GPD	5.00d	5.00d	May-30-2024	Jun-03-2024	11.00d	0%	0016618-7-DAY WEEK (NO HOLIDAYS)													
Pembroke Advanced Communications (PAC)		70.00d	70.00d	Mar-26-2024	Jun-03-2024	11.00d															
PAC Utility Adjustment Plan (UAP) and GUPS Permit		37.00d	37.00d	Mar-26-2024	May-01-2024	11.00d															
A4690	DB Team Prepares - Final Relocation Plan - PAC	10.00d	10.00d	Mar-26-2024	Apr-08-2024	7.00d	0%	0016618-5-DAY WEEK (NO WEATHER)													
A4700	Utility Owner Submits - GUPS Permit - PAC	14.00d	14.00d	Apr-09-2024	Apr-26-2024	7.00d	0%	0016618-5-DAY WEEK (NO WEATHER)													
A4710	GDOT Reviews and Accepts - GUPS Permit - PAC	5.00d	5.00d	Apr-27-2024	May-01-2024	11.00d	0%	0016618-7-DAY WEEK (NO HOLIDAYS)													
PAC Utility Work Plan and Post-Let Certification		33.00d	33.00d	May-02-2024	Jun-03-2024	11.00d															
A3300	DB Team Prepares and Submits - Utility Work Plan - PAC	5.00d	5.00d	May-02-2024	May-08-2024	7.00d	0%	0016618-5-DAY WEEK (NO WEATHER)													
A3310	GDOT Reviews and Accepts - Utility Work Plan - PAC	21.00d	21.00d	May-09-2024	May-29-2024	11.00d	0%	0016618-7-DAY WEEK (NO HOLIDAYS)													
A3320	GDOT Issues Post-Let Utility Certification - PAC	5.00d	5.00d	May-30-2024	Jun-03-2024	11.00d	0%	0016618-7-DAY WEEK (NO HOLIDAYS)													
Project Construction		666.00d	666.00d	Jun-04-2024	Mar-31-2026	0.00d															

█ Primary Baseline
 █ Critical Remaining Work
 Summary
█ Actual Work
 ◆ Baseline Milestone
█ Remaining Work
 ◆ Milestone

US 280 Widening and Interchange Improvements
Design-Build
PI No. 0016618, Bryan County

Data Date: Aug-18-2023



Activity ID	Activity Name	Original Duration	Remaining Duration	Start	Finish	Total Float	Physical % Complete	Calendar	2024				2025				2026				2027			
									Q4	Q1	Q2	Q3	Q4	Q1	Q2	Q3	Q4	Q1	Q2	Q3	Q4	Q1		
Early Opening		301.00d	301.00d	Jun-04-2024	Mar-31-2025	0.00d			Mar-31-2025, Early Opening															
A6670	Early Opening Ready to Open to Traffic	0.00d	0.00d		Mar-31-2025	0.00d	0%	0016618-7-DAY WEEK (NO HOLIDAYS)	Mar-31-2025, Early Opening Ready to Open to Traffic															
Stage 1		107.00d	107.00d	Jun-04-2024	Oct-29-2024	30.00d		0016618-6-DAY-RDWDY/PAVE	Oct-29-2024, Stage 1															
A3490	Clearing and Grubbing - Begin to I-16 Left - Stage 1	15.00d	15.00d	Jun-15-2024	Jul-08-2024	0.00d	0%	0016618-6-DAY-RDWDY/PAVE	Clearing and Grubbing - Begin to I-16 Left - Stage 1															
Begin to STA 1063+00		90.00d	90.00d	Jun-15-2024	Oct-18-2024	8.00d		0016618-6-DAY-RDWDY/PAVE	Oct-18-2024, Begin to STA 1063+00															
Grading		48.00d	48.00d	Jun-15-2024	Aug-22-2024	8.00d		0016618-6-DAY-RDWDY/PAVE	Aug-22-2024, Grading															
A3500	Install Erosion Control BMP's - Begin to STA 1063+00 - Stage 1	15.00d	15.00d	Jun-15-2024	Jul-08-2024	8.00d	0%	0016618-6-DAY-RDWDY/PAVE	Install Erosion Control BMP's - Begin to STA 1063+00 - Stage 1															
A3610	Remove Existing Obstructions - Begin to STA 1063+00 - Stage 1	2.00d	2.00d	Jul-09-2024	Jul-10-2024	8.00d	0%	0016618-6-DAY-RDWDY/PAVE	Remove Existing Obstructions - Begin to STA 1063+00 - Stage 1															
A3630	Rough Grading Cut/Fill Left - Begin to STA 1063+00 - Stage 1	8.00d	8.00d	Jul-11-2024	Jul-20-2024	8.00d	0%	0016618-6-DAY-RDWDY/PAVE	Rough Grading Cut/Fill Left - Begin to STA 1063+00 - Stage 1															
A3670	Rough Grading Borrow to Fill Left - Begin to STA 1063+00 - Stage 1	16.00d	16.00d	Jul-22-2024	Aug-14-2024	8.00d	0%	0016618-6-DAY-RDWDY/PAVE	Rough Grading Borrow to Fill Left - Begin to STA 1063+00 - Stage 1															
A3640	Fine Grade Sub-Grade - Begin to STA 1063+00 - Stage 1	7.00d	7.00d	Aug-15-2024	Aug-22-2024	8.00d	0%	0016618-6-DAY-RDWDY/PAVE	Fine Grade Sub-Grade - Begin to STA 1063+00 - Stage 1															
Drainage		10.00d	10.00d	Jul-09-2024	Jul-20-2024	8.00d		0016618-6-DAY-RDWDY/PAVE	Jul-20-2024, Drainage															
A6130	Install CU-3 to CU-4 Crossing - Begin to STA 1063+00 - Stage 1	5.00d	5.00d	Jul-09-2024	Jul-13-2024	8.00d	0%	0016618-6-DAY-RDWDY/PAVE	Install CU-3 to CU-4 Crossing - Begin to STA 1063+00 - Stage 1															
A6140	Install Turn-Around Storm Drain - Begin to STA 1063+00 - Stage 1	3.00d	3.00d	Jul-15-2024	Jul-18-2024	8.00d	0%	0016618-6-DAY-RDWDY/PAVE	Install Turn-Around Storm Drain - Begin to STA 1063+00 - Stage 1															
A6110	Install CU-1 to CU-2 Crossing - Begin to STA 1063+00 - Stage 1	2.00d	2.00d	Jul-19-2024	Jul-20-2024	8.00d	0%	0016618-6-DAY-RDWDY/PAVE	Install CU-1 to CU-2 Crossing - Begin to STA 1063+00 - Stage 1															
Base Material		22.00d	22.00d	Aug-23-2024	Sep-20-2024	8.00d		0016618-6-DAY-RDWDY/PAVE	Sep-20-2024, Base Material															
A3660	Place GAB - Begin to STA 1063+00 - Stage 1	14.00d	14.00d	Aug-23-2024	Sep-09-2024	8.00d	0%	0016618-6-DAY-RDWDY/PAVE	Place GAB - Begin to STA 1063+00 - Stage 1															
A3710	Fine Grade GAB - Begin to STA 1063+00 - Stage 1	8.00d	8.00d	Sep-10-2024	Sep-20-2024	8.00d	0%	0016618-6-DAY-RDWDY/PAVE	Fine Grade GAB - Begin to STA 1063+00 - Stage 1															
Paving		20.00d	20.00d	Sep-23-2024	Oct-18-2024	8.00d		0016618-6-DAY-RDWDY/PAVE	Oct-18-2024, Paving															
A3680	Pave 25mm Asphalt - Begin to STA 1063+00 - Stage 1	12.00d	12.00d	Sep-23-2024	Oct-07-2024	8.00d	0%	0016618-6-DAY-RDWDY/PAVE	Pave 25mm Asphalt - Begin to STA 1063+00 - Stage 1															
A3690	Pave 19mm Asphalt - Begin to STA 1063+00 - Stage 1	8.00d	8.00d	Oct-08-2024	Oct-18-2024	8.00d	0%	0016618-6-DAY-RDWDY/PAVE	Pave 19mm Asphalt - Begin to STA 1063+00 - Stage 1															
STA 1063+00 to STA 1090+00		107.00d	107.00d	Jun-04-2024	Oct-29-2024	30.00d		0016618-6-DAY-RDWDY/PAVE	Oct-29-2024, STA 1063+00 to STA 1090+00															
A3560	Install Erosion Control BMP's - STA 1063+00 to STA 1090+00 - Stage 1	25.00d	25.00d	Jun-15-2024	Jul-20-2024	0.00d	0%	0016618-6-DAY-RDWDY/PAVE	Install Erosion Control BMP's - STA 1063+00 to STA 1090+00 - Stage 1															
Traffic Control		42.00d	42.00d	Jun-04-2024	Aug-01-2024	55.00d		0016618-6-DAY-RDWDY/PAVE	Aug-01-2024, Traffic Control															
A6170	Construct Temporary I-16 EB Off Ramp	10.00d	10.00d	Jun-04-2024	Jun-15-2024	55.00d	0%	0016618-6-DAY-RDWDY/PAVE	Construct Temporary I-16 EB Off Ramp															
A6190	Shift Traffic to Temp I-16 EB Off Ramp	2.00d	2.00d	Jun-17-2024	Jun-18-2024	79.00d	0%	0016618-6-DAY-RDWDY/PAVE	Shift Traffic to Temp I-16 EB Off Ramp															
A6510	Construct Temporary I-16 EB On Ramp	10.00d	10.00d	Jun-17-2024	Jun-29-2024	55.00d	0%	0016618-6-DAY-RDWDY/PAVE	Construct Temporary I-16 EB On Ramp															
A6520	Construct Temporary I-16 WB Off Ramp	10.00d	10.00d	Jul-01-2024	Jul-15-2024	55.00d	0%	0016618-6-DAY-RDWDY/PAVE	Construct Temporary I-16 WB Off Ramp															
A6630	Shift Traffic to Temp I-16 EB On Ramp	2.00d	2.00d	Jul-01-2024	Jul-02-2024	69.00d	0%	0016618-6-DAY-RDWDY/PAVE	Shift Traffic to Temp I-16 EB On Ramp															
A6180	Construct Temporary I-16 WB On Ramp	10.00d	10.00d	Jul-16-2024	Jul-29-2024	55.00d	0%	0016618-6-DAY-RDWDY/PAVE	Construct Temporary I-16 WB On Ramp															
A6640	Shift Traffic to Temp I-16 WB Off Ramp	2.00d	2.00d	Jul-16-2024	Jul-18-2024	65.00d	0%	0016618-6-DAY-RDWDY/PAVE	Shift Traffic to Temp I-16 WB Off Ramp															
A6200	Shift Traffic to Temp I-16 WB On Ramp	2.00d	2.00d	Jul-30-2024	Aug-01-2024	55.00d	0%	0016618-6-DAY-RDWDY/PAVE	Shift Traffic to Temp I-16 WB On Ramp															
Grading		89.00d	89.00d	Jun-04-2024	Oct-04-2024	18.00d		0016618-6-DAY-RDWDY/PAVE	Oct-04-2024, Grading															
A4560	Rough Grade Exist ROW - STA 1063+00 to STA 1090+00 - Stage 1	10.00d	10.00d	Jun-04-2024	Jun-15-2024	22.00d	0%	0016618-6-DAY-RDWDY/PAVE	Rough Grade Exist ROW - STA 1063+00 to STA 1090+00 - Stage 1															
A6710	Rough Grade I-16 EB On Ramp - Stage 1	12.00d	12.00d	Jul-03-2024	Jul-20-2024	69.00d	0%	0016618-6-DAY-RDWDY/PAVE	Rough Grade I-16 EB On Ramp - Stage 1															
A6690	Rough Grade I-16 WB Off Ramp - Stage 1	8.00d	8.00d	Jul-19-2024	Jul-29-2024	65.00d	0%	0016618-6-DAY-RDWDY/PAVE	Rough Grade I-16 WB Off Ramp - Stage 1															
A4420	Cut to Fill and Rough Grade - STA 1063+00 to STA 1090+00 - Stage 1	12.00d	12.00d	Jul-22-2024	Aug-08-2024	0.00d	0%	0016618-6-DAY-RDWDY/PAVE	Cut to Fill and Rough Grade - STA 1063+00 to STA 1090+00 - Stage 1															
A6720	Fine Grade Sub-Grade - I-16 EB On Ramp - Stage 1	2.00d	2.00d	Jul-22-2024	Jul-23-2024	69.00d	0%	0016618-6-DAY-RDWDY/PAVE	Fine Grade Sub-Grade - I-16 EB On Ramp - Stage 1															
A6700	Fine Grade Sub-Grade - I-16 WB Off Ramp - Stage 1	2.00d	2.00d	Jul-30-2024	Aug-01-2024	65.00d	0%	0016618-6-DAY-RDWDY/PAVE	Fine Grade Sub-Grade - I-16 WB Off Ramp - Stage 1															
A4530	Rough Grade I-16 WB On Ramp - Stage 1	8.00d	8.00d	Aug-02-2024	Aug-14-2024	55.00d	0%	0016618-6-DAY-RDWDY/PAVE	Rough Grade I-16 WB On Ramp - Stage 1															
A4430	Fine Grade Sub-Grade - STA 1063+00 to STA 1090+00 - Stage 1	12.00d	12.00d	Aug-15-2024	Aug-28-2024	0.00d	0%	0016618-6-DAY-RDWDY/PAVE	Fine Grade Sub-Grade - STA 1063+00 to STA 1090+00 - Stage 1															
A4550	Fine Grade Sub-Grade - I-16 WB On Ramp - Stage 1	2.00d	2.00d	Aug-15-2024	Aug-16-2024	55.00d	0%	0016618-6-DAY-RDWDY/PAVE	Fine Grade Sub-Grade - I-16 WB On Ramp - Stage 1															
A4520	Rough Grade I-16 EB Off Ramp - Stage 1	12.00d	12.00d	Sep-16-2024	Oct-02-2024	16.00d	0%	0016618-6-DAY-RDWDY/PAVE	Rough Grade I-16 EB Off Ramp - Stage 1															
A4540	Fine Grade Sub-Grade - I-16 EB Off Ramp - Stage 1	2.00d	2.00d	Oct-03-2024	Oct-04-2024	16.00d	0%	0016618-6-DAY-RDWDY/PAVE	Fine Grade Sub-Grade - I-16 EB Off Ramp - Stage 1															
Drainage		50.00d	50.00d	Jun-04-2024	Aug-14-2024	87.00d		0016618-6-DAY-RDWDY/PAVE	Aug-14-2024, Drainage															
A3790	Install CU-7 to CU-8 Crossing - STA 1063+00 to STA 1090+00 - Stage 1	10.00d	10.00d	Jun-04-2024	Jun-15-2024	40.00d	0%	0016618-6-DAY-RDWDY/PAVE	Install CU-7 to CU-8 Crossing - STA 1063+00 to STA 1090+00 - Stage 1															
A3770	Install F-Series Storm Drain - STA 1063+00 to STA 1090+00 - Stage 1	6.00d	6.00d	Jun-17-2024	Jun-25-2024	22.00d	0%	0016618-6-DAY-RDWDY/PAVE	Install F-Series Storm Drain - STA 1063+00 to STA 1090+00 - Stage 1															

Primary Baseline
 Critical Remaining Work
 Summary
 Actual Work
 ◆ Baseline Milestone
 Remaining Work
 ◆ Milestone

US 280 Widening and Interchange Improvements
Design-Build
PI No. 0016618, Bryan County

Data Date: Aug-18-2023



Matthews-McLendon Joint Venture

Proposal Schedule

Submitted: August 10, 2023
Page 8 of 11

Activity ID	Activity Name	Original Duration	Remaining Duration	Start	Finish	Total Float	Physical % Complete	Calendar	2024				2025				2026				2027
									Q4	Q1	Q2	Q3	Q4	Q1	Q2	Q3	Q4	Q1	Q2	Q3	Q4
A3780	Install C-Series Storm Drain - STA 1063+00 to STA 1090+00 - Stage 1	12.00d	12.00d	Jun-26-2024	Jul-12-2024	22.00d	0%	0016618-6-DAY-RDWY/PAVE													
A7850	Install B-Series Storm Drain - STA 1063+00 to STA 1090+00 - Stage 1	4.00d	4.00d	Jul-13-2024	Jul-18-2024	98.00d	0%	0016618-6-DAY-RDWY/PAVE													
A7840	Install G-Series Storm Drain - STA 1063+00 to STA 1090+00 - Stage 1	7.00d	7.00d	Jul-19-2024	Jul-27-2024	98.00d	0%	0016618-6-DAY-RDWY/PAVE													
A3760	Install H-Series Storm Drain - STA 1063+00 to STA 1090+00 - Stage 1	4.00d	4.00d	Aug-09-2024	Aug-14-2024	0.00d	0%	0016618-6-DAY-RDWY/PAVE													
Base Material		59.00d	59.00d	Jul-25-2024	Oct-12-2024	16.00d		0016618-6-DAY-RDWY/PAVE													
A6530	Place GAB - I-16 EB On Ramp - Stage 1	4.00d	4.00d	Jul-25-2024	Jul-29-2024	69.00d	0%	0016618-6-DAY-RDWY/PAVE													
A6570	Fine Grade GAB - I-16 EB On Ramp - Stage 1	2.00d	2.00d	Jul-30-2024	Aug-01-2024	69.00d	0%	0016618-6-DAY-RDWY/PAVE													
A6540	Place GAB - I-16 WB Off Ramp - Stage 1	4.00d	4.00d	Aug-02-2024	Aug-08-2024	65.00d	0%	0016618-6-DAY-RDWY/PAVE													
A6560	Fine Grade GAB - I-16 WB Off Ramp - Stage 1	2.00d	2.00d	Aug-06-2024	Aug-08-2024	65.00d	0%	0016618-6-DAY-RDWY/PAVE													
A4470	Place GAB - I-16 WB On Ramp - Stage 1	4.00d	4.00d	Aug-17-2024	Aug-21-2024	55.00d	0%	0016618-6-DAY-RDWY/PAVE													
A4490	Fine Grade GAB - I-16 WB On Ramp - Stage 1	2.00d	2.00d	Aug-20-2024	Aug-21-2024	55.00d	0%	0016618-6-DAY-RDWY/PAVE													
A4440	Place GAB - US 280 - STA 1063+00 to STA 1090+00 - Stage 1	8.00d	8.00d	Aug-29-2024	Sep-07-2024	0.00d	0%	0016618-6-DAY-RDWY/PAVE													
A4480	Fine Grade GAB - US 280 - STA 1063+00 to STA 1090+00 - Stage 1	6.00d	6.00d	Sep-09-2024	Sep-16-2024	20.00d	0%	0016618-6-DAY-RDWY/PAVE													
A4460	Place GAB - I-16 EB Off Ramp - Stage 1	4.00d	4.00d	Oct-05-2024	Oct-10-2024	16.00d	0%	0016618-6-DAY-RDWY/PAVE													
A4500	Fine Grade GAB - I-16 EB Off Ramp - Stage 1	2.00d	2.00d	Oct-11-2024	Oct-12-2024	16.00d	0%	0016618-6-DAY-RDWY/PAVE													
Paving		65.00d	65.00d	Aug-02-2024	Oct-29-2024	11.00d		0016618-6-DAY-RDWY/PAVE													
A6580	Pave 19mm - I-16 EB On Ramp - Stage 1	1.00d	1.00d	Aug-02-2024	Aug-02-2024	69.00d	0%	0016618-6-DAY-RDWY/PAVE													
A6600	Concrete Paving - I-16 EB On Ramp - Stage 1	6.00d	6.00d	Aug-05-2024	Aug-13-2024	69.00d	0%	0016618-6-DAY-RDWY/PAVE													
A6590	Pave 19mm - I-16 WB Off Ramp - Stage 1	1.00d	1.00d	Aug-09-2024	Aug-09-2024	65.00d	0%	0016618-6-DAY-RDWY/PAVE													
A6610	Concrete Paving - I-16 WB Off Ramp - Stage 1	6.00d	6.00d	Aug-12-2024	Aug-17-2024	65.00d	0%	0016618-6-DAY-RDWY/PAVE													
A4040	Pave 19mm - I-16 WB On Ramp - Stage 1	1.00d	1.00d	Aug-22-2024	Aug-22-2024	55.00d	0%	0016618-6-DAY-RDWY/PAVE													
A4060	Concrete Paving - I-16 WB On Ramp - Stage 1	6.00d	6.00d	Aug-23-2024	Aug-29-2024	55.00d	0%	0016618-6-DAY-RDWY/PAVE													
A4030	Pave 19mm - I-16 EB Off Ramp - Stage 1	1.00d	1.00d	Oct-14-2024	Oct-14-2024	16.00d	0%	0016618-6-DAY-RDWY/PAVE													
A4000	Pave 25mm - STA 1063+00 to STA 1090+00 - Stage 1	7.00d	7.00d	Oct-15-2024	Oct-24-2024	0.00d	0%	0016618-6-DAY-RDWY/PAVE													
A4050	Concrete Paving - I-16 EB Off Ramp - Stage 1	6.00d	6.00d	Oct-15-2024	Oct-22-2024	16.00d	0%	0016618-6-DAY-RDWY/PAVE													
A4010	Pave 19mm - STA 1063+00 to STA 1090+00 - Stage 1	4.00d	4.00d	Oct-25-2024	Oct-29-2024	0.00d	0%	0016618-6-DAY-RDWY/PAVE													
Concrete/Structures		26.00d	26.00d	Sep-09-2024	Oct-14-2024	0.00d		0016618-6-DAY-RDWY/PAVE													
A4190	Fine Grade Curb Pad - STA 1063+00 to STA 1090+00 - Stage 1	6.00d	6.00d	Sep-09-2024	Sep-16-2024	0.00d	0%	0016618-6-DAY-RDWY/PAVE													
A4450	Form and Pour Concrete Spillways - STA 1063+00 to STA 1090+00 - Stage 1	12.00d	12.00d	Sep-17-2024	Oct-03-2024	0.00d	0%	0016618-6-DAY-RDWY/PAVE													
A4510	Form and Pour Curb & Gutter - STA 1063+00 to STA 1090+00 - Stage 1	8.00d	8.00d	Oct-04-2024	Oct-14-2024	0.00d	0%	0016618-6-DAY-RDWY/PAVE													
Stage 2		131.00d	131.00d	Aug-14-2024	Feb-22-2025	26.00d		0016618-6-DAY-RDWY/PAVE													
A7130	Clearing and Grubbing - Begin to I-16 Right - Stage 2	15.00d	15.00d	Sep-16-2024	Oct-05-2024	4.00d	0%	0016618-6-DAY-RDWY/PAVE													
Begin to STA 1063+00		90.00d	90.00d	Oct-07-2024	Feb-22-2025	0.00d		0016618-6-DAY-RDWY/PAVE													
Traffic Control		2.00d	2.00d	Oct-30-2024	Oct-31-2024	0.00d		0016618-6-DAY-RDWY/PAVE													
A7820	Shift Traffic to Stage 2 Alignment - Begin to STA 1063+00 - Stage 2	2.00d	2.00d	Oct-30-2024	Oct-31-2024	0.00d	0%	0016618-6-DAY-RDWY/PAVE													
Grading		50.00d	50.00d	Oct-07-2024	Dec-14-2024	0.00d		0016618-6-DAY-RDWY/PAVE													
A7700	Install Erosion Control BMP's - Begin to STA 1063+00 - Stage 2	15.00d	15.00d	Oct-07-2024	Oct-26-2024	4.00d	0%	0016618-6-DAY-RDWY/PAVE													
A7710	Remove Existing Obstructions - Begin to STA 1063+00 - Stage 2	2.00d	2.00d	Nov-01-2024	Nov-02-2024	0.00d	0%	0016618-6-DAY-RDWY/PAVE													
A7720	Rough Grading Cut/Fill Left - Begin to STA 1063+00 - Stage 2	8.00d	8.00d	Nov-04-2024	Nov-12-2024	0.00d	0%	0016618-6-DAY-RDWY/PAVE													
A7800	Rough Grading Borrow to Fill Left - Begin to STA 1063+00 - Stage 2	16.00d	16.00d	Nov-14-2024	Dec-09-2024	0.00d	0%	0016618-6-DAY-RDWY/PAVE													
A7730	Fine Grade Sub-Grade - Begin to STA 1063+00 - Stage 2	5.00d	5.00d	Dec-10-2024	Dec-14-2024	0.00d	0%	0016618-6-DAY-RDWY/PAVE													
Drainage		10.00d	10.00d	Oct-28-2024	Nov-07-2024	4.00d		0016618-6-DAY-RDWY/PAVE													
A7780	Install CU-3 to CU-4 Crossing - Begin to STA 1063+00 - Stage 2	5.00d	5.00d	Oct-28-2024	Nov-01-2024	4.00d	0%	0016618-6-DAY-RDWY/PAVE													
A7790	Install Turn-Around Storm Drain - Begin to STA 1063+00 - Stage 2	3.00d	3.00d	Nov-02-2024	Nov-05-2024	4.00d	0%	0016618-6-DAY-RDWY/PAVE													
A7770	Install CU-1 to CU-2 Crossing - Begin to STA 1063+00 - Stage 2	2.00d	2.00d	Nov-06-2024	Nov-07-2024	4.00d	0%	0016618-6-DAY-RDWY/PAVE													
Base Material		20.00d	20.00d	Dec-16-2024	Jan-24-2025	0.00d		0016618-6-DAY-RDWY/PAVE													
A7740	Place GAB - Begin to STA 1063+00 - Stage 2	12.00d	12.00d	Dec-16-2024	Jan-13-2025	0.00d	0%	0016618-6-DAY-RDWY/PAVE													

█ Primary Baseline
 █ Critical Remaining Work
 ▾ Summary
█ Actual Work
 ◆ Baseline Milestone
█ Remaining Work
 ◆ Milestone

US 280 Widening and Interchange Improvements
Design-Build
PI No. 0016618, Bryan County

Data Date: Aug-18-2023



Matthews-McLendon Joint Venture

Proposal Schedule

Submitted: August 10, 2023
Page 9 of 11

Activity ID	Activity Name	Original Duration	Remaining Duration	Start	Finish	Total Float	Physical % Complete	Calendar	2024				2025				2026				2027
									Q4	Q1	Q2	Q3	Q4	Q1	Q2	Q3	Q4	Q1	Q2	Q3	Q4
A7810	Fine Grade GAB - Begin to STA 1063+00 - Stage 2	8.00d	8.00d	Jan-14-2025	Jan-24-2025	0.00d	0%	0016618-6-DAY-RDWH/PAVE													
	Paving	20.00d	20.00d	Jan-25-2025	Feb-22-2025	0.00d		0016618-6-DAY-RDWH/PAVE													
A7750	Pave 25mm Asphalt - Begin to STA 1063+00 - Stage 2	10.00d	10.00d	Jan-25-2025	Feb-07-2025	0.00d	0%	0016618-6-DAY-RDWH/PAVE													
A7760	Pave 19mm Asphalt - Begin to STA 1063+00 - Stage 2	10.00d	10.00d	Feb-10-2025	Feb-22-2025	0.00d	0%	0016618-6-DAY-RDWH/PAVE													
	STA 1063+00 to STA 1090+00	118.00d	118.00d	Aug-14-2024	Feb-03-2025	39.00d		0016618-6-DAY-RDWH/PAVE													
A7150	Install Erosion Control BMP's - STA 1063+00 to STA 1090+00 - Stage 2	8.00d	8.00d	Sep-16-2024	Sep-27-2024	39.00d	0%	0016618-6-DAY-RDWH/PAVE													
	Traffic Control	60.00d	60.00d	Aug-14-2024	Oct-31-2024	13.00d		0016618-6-DAY-RDWH/PAVE													
A7680	Shift Traffic to Stage 2 Alignment - I-16 EB On Ramp	2.00d	2.00d	Aug-14-2024	Aug-15-2024	69.00d	0%	0016618-6-DAY-RDWH/PAVE													
A7670	Shift Traffic to Stage 2 Alignment - I-16 WB Off Ramp	2.00d	2.00d	Aug-19-2024	Aug-20-2024	65.00d	0%	0016618-6-DAY-RDWH/PAVE													
A7690	Shift Traffic to Stage 2 Alignment - I-16 WB On Ramp	2.00d	2.00d	Aug-30-2024	Aug-31-2024	55.00d	0%	0016618-6-DAY-RDWH/PAVE													
A7660	Shift Traffic to Stage 2 Alignment - I-16 EB Off Ramp	2.00d	2.00d	Oct-24-2024	Oct-25-2024	16.00d	0%	0016618-6-DAY-RDWH/PAVE													
A7290	Shift Traffic to Stage 2 Alignment - STA 1063+00 to STA 1090+00 - Stage 2	2.00d	2.00d	Oct-30-2024	Oct-31-2024	13.00d	0%	0016618-6-DAY-RDWH/PAVE													
	Grading	79.00d	79.00d	Aug-16-2024	Dec-03-2024	67.00d		0016618-6-DAY-RDWH/PAVE													
A7620	Rough Grade I-16 EB On Ramp - Stage 2	2.00d	2.00d	Aug-16-2024	Aug-17-2024	142.00d	0%	0016618-6-DAY-RDWH/PAVE													
A7640	Fine Grade Sub-Grade - I-16 EB On Ramp - Stage 2	1.00d	1.00d	Aug-19-2024	Aug-19-2024	142.00d	0%	0016618-6-DAY-RDWH/PAVE													
A7630	Rough Grade I-16 WB Off Ramp - Stage 2	4.00d	4.00d	Aug-21-2024	Aug-24-2024	134.00d	0%	0016618-6-DAY-RDWH/PAVE													
A7650	Fine Grade Sub-Grade - I-16 WB Off Ramp - Stage 2	2.00d	2.00d	Aug-26-2024	Aug-27-2024	134.00d	0%	0016618-6-DAY-RDWH/PAVE													
A7590	Rough Grade I-16 WB On Ramp - Stage 2	2.00d	2.00d	Sep-03-2024	Sep-04-2024	129.00d	0%	0016618-6-DAY-RDWH/PAVE													
A7610	Fine Grade Sub-Grade - I-16 WB On Ramp - Stage 2	1.00d	1.00d	Sep-05-2024	Sep-05-2024	129.00d	0%	0016618-6-DAY-RDWH/PAVE													
A7580	Rough Grade I-16 EB Off Ramp - Stage 2	6.00d	6.00d	Oct-26-2024	Nov-01-2024	81.00d	0%	0016618-6-DAY-RDWH/PAVE													
A7360	Cut to Fill and Rough Grade - STA 1063+00 to STA 1090+00 - Stage 2	8.00d	8.00d	Nov-01-2024	Nov-09-2024	13.00d	0%	0016618-6-DAY-RDWH/PAVE													
A7600	Fine Grade Sub-Grade - I-16 EB Off Ramp - Stage 2	2.00d	2.00d	Nov-02-2024	Nov-04-2024	81.00d	0%	0016618-6-DAY-RDWH/PAVE													
A7370	Fine Grade Sub-Grade - STA 1063+00 to STA 1090+00 - Stage 2	6.00d	6.00d	Nov-22-2024	Dec-03-2024	13.00d	0%	0016618-6-DAY-RDWH/PAVE													
	Drainage	7.00d	7.00d	Nov-11-2024	Nov-21-2024	13.00d		0016618-6-DAY-RDWH/PAVE													
A7310	Install B-Series Storm Drain - STA 1063+00 to STA 1090+00 - Stage 2	4.00d	4.00d	Nov-11-2024	Nov-15-2024	16.00d	0%	0016618-6-DAY-RDWH/PAVE													
A7320	Install G-Series Storm Drain - STA 1063+00 to STA 1090+00 - Stage 2	7.00d	7.00d	Nov-11-2024	Nov-21-2024	13.00d	0%	0016618-6-DAY-RDWH/PAVE													
	Base Material	84.00d	84.00d	Aug-20-2024	Dec-12-2024	61.00d		0016618-6-DAY-RDWH/PAVE													
A7500	Place GAB - I-16 EB On Ramp - Stage 2	2.00d	2.00d	Aug-20-2024	Aug-21-2024	142.00d	0%	0016618-6-DAY-RDWH/PAVE													
A7530	Fine Grade GAB - I-16 EB On Ramp - Stage 2	1.00d	1.00d	Aug-22-2024	Aug-22-2024	142.00d	0%	0016618-6-DAY-RDWH/PAVE													
A7510	Place GAB - I-16 WB Off Ramp - Stage 2	4.00d	4.00d	Aug-28-2024	Aug-31-2024	134.00d	0%	0016618-6-DAY-RDWH/PAVE													
A7520	Fine Grade GAB - I-16 WB Off Ramp - Stage 2	2.00d	2.00d	Aug-30-2024	Aug-31-2024	134.00d	0%	0016618-6-DAY-RDWH/PAVE													
A7410	Place GAB - I-16 WB On Ramp - Stage 2	2.00d	2.00d	Sep-06-2024	Sep-07-2024	129.00d	0%	0016618-6-DAY-RDWH/PAVE													
A7430	Fine Grade GAB - I-16 WB On Ramp - Stage 2	1.00d	1.00d	Sep-07-2024	Sep-07-2024	129.00d	0%	0016618-6-DAY-RDWH/PAVE													
A7400	Place GAB - I-16 EB Off Ramp - Stage 2	4.00d	4.00d	Nov-05-2024	Nov-08-2024	81.00d	0%	0016618-6-DAY-RDWH/PAVE													
A7440	Fine Grade GAB - I-16 EB Off Ramp - Stage 2	2.00d	2.00d	Nov-09-2024	Nov-11-2024	81.00d	0%	0016618-6-DAY-RDWH/PAVE													
A7380	Place GAB - US 280 - STA 1063+00 to STA 1090+00 - Stage 2	5.00d	5.00d	Dec-04-2024	Dec-09-2024	13.00d	0%	0016618-6-DAY-RDWH/PAVE													
A7420	Fine Grade GAB - US 280 - STA 1063+00 to STA 1090+00 - Stage 2	3.00d	3.00d	Dec-10-2024	Dec-12-2024	36.00d	0%	0016618-6-DAY-RDWH/PAVE													
	Paving	110.00d	110.00d	Aug-23-2024	Feb-03-2025	39.00d		0016618-6-DAY-RDWH/PAVE													
A7540	Pave 19mm - I-16 EB On Ramp - Stage 2	1.00d	1.00d	Aug-23-2024	Aug-23-2024	142.00d	0%	0016618-6-DAY-RDWH/PAVE													
A7560	Concrete Paving - I-16 EB On Ramp - Stage 2	6.00d	6.00d	Aug-24-2024	Aug-30-2024	142.00d	0%	0016618-6-DAY-RDWH/PAVE													
A7550	Pave 19mm - I-16 WB Off Ramp - Stage 2	1.00d	1.00d	Sep-03-2024	Sep-03-2024	134.00d	0%	0016618-6-DAY-RDWH/PAVE													
A7570	Concrete Paving - I-16 WB Off Ramp - Stage 2	6.00d	6.00d	Sep-04-2024	Sep-10-2024	134.00d	0%	0016618-6-DAY-RDWH/PAVE													
A7460	Pave 19mm - I-16 WB On Ramp - Stage 2	1.00d	1.00d	Sep-09-2024	Sep-09-2024	129.00d	0%	0016618-6-DAY-RDWH/PAVE													
A7480	Concrete Paving - I-16 WB On Ramp - Stage 2	6.00d	6.00d	Sep-10-2024	Sep-17-2024	129.00d	0%	0016618-6-DAY-RDWH/PAVE													
A7450	Pave 19mm - I-16 EB Off Ramp - Stage 2	1.00d	1.00d	Nov-12-2024	Nov-12-2024	81.00d	0%	0016618-6-DAY-RDWH/PAVE													
A7470	Concrete Paving - I-16 EB Off Ramp - Stage 2	6.00d	6.00d	Nov-14-2024	Nov-22-2024	81.00d	0%	0016618-6-DAY-RDWH/PAVE													

█ Primary Baseline
 █ Critical Remaining Work
 Summary
█ Actual Work
 ◆ Baseline Milestone
█ Remaining Work
 ◆ Milestone

US 280 Widening and Interchange Improvements
Design-Build
PI No. 0016618, Bryan County

Data Date: Aug-18-2023



Matthews-McLendon Joint Venture

Proposal Schedule

Activity ID	Activity Name	Original Duration	Remaining Duration	Start	Finish	Total Float	Physical % Complete	Calendar	2024				2025				2026				2027
									Q4	Q1	Q2	Q3	Q4	Q1	Q2	Q3	Q4	Q1	Q2	Q3	Q4
A7330	Pave 25mm - STA 1063+00 to STA 1090+00 - Stage 2	4.00d	4.00d	Jan-27-2025	Jan-31-2025	13.00d	0%	0016618-6-DAY-RDWY/PAVE													
A7340	Pave 19mm - STA 1063+00 to STA 1090+00 - Stage 2	2.00d	2.00d	Feb-01-2025	Feb-03-2025	13.00d	0%	0016618-6-DAY-RDWY/PAVE													
Concrete/Structures		26.00d	26.00d	Dec-10-2024	Jan-25-2025	13.00d		0016618-6-DAY-RDWY/PAVE													
A7350	Fine Grade Curb Pad - STA 1063+00 to STA 1090+00 - Stage 2	6.00d	6.00d	Dec-10-2024	Dec-16-2024	13.00d	0%	0016618-6-DAY-RDWY/PAVE													
A7390	Form and Pour Concrete Spillways - STA 1063+00 to STA 1090+00 - Stage 2	12.00d	12.00d	Dec-17-2024	Jan-14-2025	13.00d	0%	0016618-6-DAY-RDWY/PAVE													
A7490	Form and Pour Curb & Gutter - STA 1063+00 to STA 1090+00 - Stage 2	8.00d	8.00d	Jan-16-2025	Jan-25-2025	13.00d	0%	0016618-6-DAY-RDWY/PAVE													
Stage 3		26.00d	26.00d	Feb-24-2025	Mar-31-2025	0.00d		0016618-6-DAY-RDWY/PAVE													
STA 1063+00 to STA 1090+00		26.00d	26.00d	Feb-24-2025	Mar-31-2025	0.00d		0016618-6-DAY-RDWY/PAVE													
Traffic Control		1.00d	1.00d	Feb-24-2025	Feb-24-2025	0.00d		0016618-6-DAY-RDWY/PAVE													
A6660	Shift Traffic to Stage 3 Alignment - STA 1063+00 to STA 1090+00 - Stage 3	1.00d	1.00d	Feb-24-2025	Feb-24-2025	0.00d	0%	0016618-6-DAY-RDWY/PAVE													
Grading		5.00d	5.00d	Feb-25-2025	Mar-01-2025	0.00d		0016618-6-DAY-RDWY/PAVE													
A7830	Remove Pavement from Round-About Centers	5.00d	5.00d	Feb-25-2025	Mar-01-2025	0.00d	0%	0016618-6-DAY-RDWY/PAVE													
Base Material		8.00d	8.00d	Mar-03-2025	Mar-14-2025	0.00d		0016618-6-DAY-RDWY/PAVE													
A6950	Place GAB - Round-About Truck Aprons - STA 1063+00 to STA 1090+00 - Stage 3	5.00d	5.00d	Mar-03-2025	Mar-10-2025	0.00d	0%	0016618-6-DAY-RDWY/PAVE													
A6960	Fine Grade GAB - Round-About Truck Aprons - STA 1063+00 to STA 1090+00 - Stage 3	3.00d	3.00d	Mar-11-2025	Mar-14-2025	0.00d	0%	0016618-6-DAY-RDWY/PAVE													
Concrete/Structures		12.00d	12.00d	Mar-15-2025	Mar-31-2025	0.00d		0016618-6-DAY-RDWY/PAVE													
A7080	Form and Pour Round-About Truck Aprons - STA 1063+00 to STA 1090+00 - Stage 3	12.00d	12.00d	Mar-15-2025	Mar-31-2025	0.00d	0%	0016618-6-DAY-RDWY/PAVE													
STA 1090+00 to End		169.00d	169.00d	Dec-16-2024	Aug-20-2025	0.00d		0016618-6-DAY-RDWY/PAVE													
Stage 1		109.00d	109.00d	Dec-16-2024	May-29-2025	0.00d		0016618-6-DAY-RDWY/PAVE													
A7860	Clearing and Grubbing - STA 1090+00 to End - Stage 1	15.00d	15.00d	Dec-16-2024	Jan-17-2025	0.00d	0%	0016618-6-DAY-RDWY/PAVE													
Grading		68.00d	68.00d	Dec-16-2024	Apr-03-2025	0.00d		0016618-6-DAY-RDWY/PAVE													
A9070	Install Erosion Control BMP's - STA 1090+00 to End - Stage 1	15.00d	15.00d	Dec-16-2024	Jan-17-2025	0.00d	0%	0016618-6-DAY-RDWY/PAVE													
A9080	Remove Existing Obstructions - STA 1090+00 to End - Stage 1	2.00d	2.00d	Jan-18-2025	Jan-20-2025	0.00d	0%	0016618-6-DAY-RDWY/PAVE													
A8020	Cut to Fill and Rough Grade - STA 1090+00 to End - Stage 1	15.00d	15.00d	Jan-21-2025	Feb-11-2025	0.00d	0%	0016618-6-DAY-RDWY/PAVE													
A8030	Fine Grade Sub-Grade - STA 1090+00 to End - Stage 1	16.00d	16.00d	Mar-13-2025	Apr-03-2025	0.00d	0%	0016618-6-DAY-RDWY/PAVE													
Drainage		20.00d	20.00d	Feb-13-2025	Mar-11-2025	0.00d		0016618-6-DAY-RDWY/PAVE													
A7960	Install E-Series Storm Drain - STA 1090+00 to End - Stage 1	20.00d	20.00d	Feb-13-2025	Mar-11-2025	0.00d	0%	0016618-6-DAY-RDWY/PAVE													
Base Material		14.00d	14.00d	Apr-04-2025	Apr-24-2025	16.00d		0016618-6-DAY-RDWY/PAVE													
A8040	Place GAB - US 280 - STA 1090+00 to End - Stage 1	8.00d	8.00d	Apr-04-2025	Apr-15-2025	0.00d	0%	0016618-6-DAY-RDWY/PAVE													
A8150	Fine Grade GAB - US 280 - STA 1090+00 to End - Stage 1	6.00d	6.00d	Apr-17-2025	Apr-24-2025	16.00d	0%	0016618-6-DAY-RDWY/PAVE													
Paving		11.00d	11.00d	May-15-2025	May-29-2025	0.00d		0016618-6-DAY-RDWY/PAVE													
A7990	Pave 25mm - STA 1090+00 to End - Stage 1	7.00d	7.00d	May-15-2025	May-22-2025	0.00d	0%	0016618-6-DAY-RDWY/PAVE													
A8000	Pave 19mm - STA 1090+00 to End - Stage 1	4.00d	4.00d	May-23-2025	May-29-2025	0.00d	0%	0016618-6-DAY-RDWY/PAVE													
Concrete/Structures		22.00d	22.00d	Apr-17-2025	May-14-2025	0.00d		0016618-6-DAY-RDWY/PAVE													
A8010	Fine Grade Curb Pad - STA 1090+00 to End - Stage 1	6.00d	6.00d	Apr-17-2025	Apr-24-2025	0.00d	0%	0016618-6-DAY-RDWY/PAVE													
A8050	Form and Pour Concrete Spillways - STA 1090+00 to End - Stage 1	8.00d	8.00d	Apr-25-2025	May-03-2025	0.00d	0%	0016618-6-DAY-RDWY/PAVE													
A8220	Form and Pour Curb & Gutter - STA 1090+00 to End - Stage 1	8.00d	8.00d	May-05-2025	May-14-2025	0.00d	0%	0016618-6-DAY-RDWY/PAVE													
Stage 2		45.00d	45.00d	May-30-2025	Aug-01-2025	0.00d		0016618-6-DAY-RDWY/PAVE													
Traffic Control		2.00d	2.00d	May-30-2025	Jun-02-2025	0.00d		0016618-6-DAY-RDWY/PAVE													
A8530	Shift Traffic to Stage 2 Alignment - STA 1090+00 to End - Stage 2	2.00d	2.00d	May-30-2025	Jun-02-2025	0.00d	0%	0016618-6-DAY-RDWY/PAVE													
Grading		14.00d	14.00d	Jun-03-2025	Jun-21-2025	0.00d		0016618-6-DAY-RDWY/PAVE													
A8590	Cut to Fill and Rough Grade - STA 1090+00 to End - Stage 2	8.00d	8.00d	Jun-03-2025	Jun-12-2025	0.00d	0%	0016618-6-DAY-RDWY/PAVE													
A8600	Fine Grade Sub-Grade - STA 1090+00 to End - Stage 2	6.00d	6.00d	Jun-13-2025	Jun-21-2025	0.00d	0%	0016618-6-DAY-RDWY/PAVE													
Base Material		6.00d	6.00d	Jun-23-2025	Jun-28-2025	18.00d		0016618-6-DAY-RDWY/PAVE													
A8610	Place GAB - US 280 - STA 1090+00 to End - Stage 2	4.00d	4.00d	Jun-23-2025	Jun-26-2025	0.00d	0%	0016618-6-DAY-RDWY/PAVE													
A8650	Fine Grade GAB - US 280 - STA 1090+00 to End - Stage 2	2.00d	2.00d	Jun-27-2025	Jun-28-2025	18.00d	0%	0016618-6-DAY-RDWY/PAVE													
Paving		5.00d	5.00d	Jul-26-2025	Aug-01-2025	0.00d		0016618-6-DAY-RDWY/PAVE													
A8560	Pave 25mm - STA 1090+00 to End - Stage 2	3.00d	3.00d	Jul-26-2025	Jul-29-2025	0.00d	0%	0016618-6-DAY-RDWY/PAVE													

█ Primary Baseline
 █ Critical Remaining Work
 Summary
█ Actual Work
 ◆ Baseline Milestone
█ Remaining Work
 ◆ Milestone

US 280 Widening and Interchange Improvements
Design-Build
PI No. 0016618, Bryan County

Data Date: Aug-18-2023



Submitted To:



Submitted By:



in association with

