

# MILEPOST

GEORGIA

Summer 2012

**MILEPOST** now  
includes **CONNECTOR**

...information of  
**particular interest**  
to **employees of**  
**Georgia DOT**

**District 3's Role in Support of Film Industry**

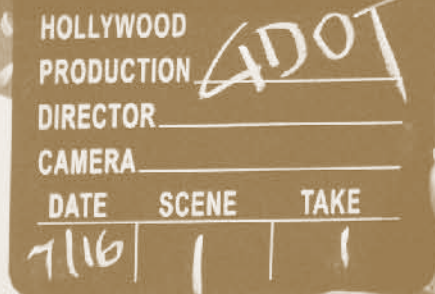
Page 9

**Anatomy of a HERO**

Page 10

**Northwest Corridor Express Moves Forward**

Page 13



**GDOT**  
Georgia Department of Transportation

## Contents

- 1 Commissioner's Column
- 2 Across the Board:  
Gateways to Welcome Visitors
- 3 GDOT Briefs
- 4 GeoTRAQS Improves Tracking and Information Gathering
- 5 GDOT Updates:  
Transportation Referendum  
MMPT Environmental Review
- 6 Creative traffic management on GA 400
- 7 Georgia's first Diverging Diamond Interchange Opens
- 8 GDOT Tidbits
- 9 District 3 Ready for "Action" in Support of Film Industry
- 10 Anatomy of a HERO and His Truck
- 12 Summer Construction
- 13 Northwest Corridor Express Moves Forward
- 14 *Welcome to*  
**CONNECTOR** News for and about Employees of Georgia DOT
- 15 Above & Beyond: Customer Service Award
- 16 Letters of Praise
- 18 GDOT Equipment Operators Display Skills at Statewide Competition  
Connector Shorts
- 19 Retirees and Service Anniversaries



**On the cover:** D3 Communications Officer Kimberly Larson has major role in scouting sites for Hollywood movies on location in Georgia.

**Cover photo:** CEDRIC MOHR cmohr@dot.ga.gov

## Commissioner's Column

Doing more with less.



**N**owadays "doing more with less" is a common theme. Families, businesses and DOTs across the country all face this challenge. And Georgia Department of Transportation is no exception. We are continually developing new strategies to do more with less.

For example, in this issue of MILEPOST, you will learn how GDOT is doing more with less to ease

congestion on GA 400 by making operational enhancements that maximize use of the existing pavement - without the costs of paving new lanes. You will also read about Georgia's first diverging diamond interchange that opened in June in DeKalb County. The DDI concept—while addressing safety and congestion—is a significant money-saver over traditional interchange designs.

There's an "Anatomy of a HERO," insights into how GDOT works with the motion picture industry to film movies in Georgia, and a look at the re-invented Northwest Corridor Express project.

And finally, there is the Regional Transportation Referendum. On July 31, Georgians will vote on a one percent 10-year sales tax for transportation projects in their communities. In regions that pass the tax, GDOT is prepared to fulfill our role to deliver projects on time and on budget.

MILEPOST has tackled the "do more with less" challenge also. This is the first issue that includes our employee newsletter—CONNECTOR—as a special section. Connector is news for and about employees, and the important work they perform. We anticipate that all readers will enjoy and benefit from this additional perspective.

With summer construction ongoing, please be especially cautious while driving in work zones.

I wish you a safe and productive summer.

Keith Golden, P.E.



### ADMINISTRATION

**Keith Golden, P.E.**

Commissioner

**Todd Long, P.E.**

Deputy Commissioner

**Gerald Ross, P.E.**

Chief Engineer

**Angela Whitworth**

Treasurer

### OFFICE OF COMMUNICATIONS

**Karlene Barron**

Director

### Creative & Design Services

**Carla Murphy**

Program Manager

**Cedric Mohr**

Design Project Manager

**Liz Rothman**

Public Affairs Writer

**Ron Battle**

Electronic Information

Design Coordinator

### Communications Intern

**Robin Glaubman**

### Contributing Writers

**Julette Carter**

**Jill Goldberg**

**David Spear**

**Susan Long**, Perimeter Community

Improvement Districts

### District Communications

**Teri Pope**, District One

**Cissy McNure**, District Two

**Kimberly Larson**, District Three

**Craig Solomon**, District Four

**Jill Nagel**, District Five

**Mohamed Arafa**, District Six

**Mark McKinnon**, District Seven



Sam Wellborn Don Grantham Jeff Lewis

## Gateways to Welcome Visitors to Georgia

By **Liz Rothman**

Enhancing the appearance of key entry points into Georgia is becoming a reality with Georgia DOT's selection of a design consultant firm to create eye-catching **Welcome to Georgia** entrance structures and landscaping.

The contract was awarded to Alpharetta-based AMEC, an international project management company offering engineering, consulting, and environmental services for the transportation and energy sectors.

The gateways will be designed to improve aesthetics for drivers crossing into Georgia, especially on major interstates. The signature landmarks will encourage economic development, and drive home the message that Georgia is a great place to live, work, and play.

AMEC is evaluating each of the preliminary locations to determine water and power availability, design scale based upon location, and boundaries with adjacent states. Design models are expected in the fall.

The State Transportation Board (STB) Gateway Subcommittee is chaired by **Sam Wellborn** of Columbus, representing the 3rd Congressional District. Subcommittee

members are **Don Grantham** of Augusta, representing the 10th Congressional District; and **Jeff Lewis** of White, representing the 11th Congressional District.

"I am very excited to see what possibilities are available to improve the appearance of major roadways into Georgia," said Wellborn. "I want us to make a positive impact on visitors that will leave a lasting impression when people drive across that state line... a wow factor," he added.

Due to the large number of interstate highway entrances to Georgia and the limited funding available, Wellborn expects the Gateways program to be a multi-year initiative. About \$3 million a year will come from the advertising income Georgia DOT collects from the blue informational signs posted along Georgia interstates, Wellborn said. "We have segregated that money at the DOT. Now, we've got a specific program where we're going to use it."

**Keith Golden** was unanimously selected commissioner of Georgia DOT on March 1 by the State Transportation Board. A 25-year GDOT veteran, Golden had served as acting commissioner since September, was deputy commissioner and held numerous management positions in traffic engineering and operations, including director of operations. Golden is a registered professional engineer, with bachelor and master's degrees in civil engineering from Georgia Institute of Technology. He began his 25-year Georgia DOT career in planning and has held numerous management positions, most recently as director of operations

**Todd Long** has been appointed Georgia DOT deputy commissioner. He was most recently the state planning director and has a long history with the Department before moving to the Governor's office. Long has bachelor and master's degrees in civil engineering from the Georgia Institute of Technology. He is a registered professional engineer and a certified professional traffic operations engineer.

**Toby Carr** was appointed director of planning by Governor Nathan Deal. Carr served as Gov. Deal's transportation policy advisor and was previously his liaison to the Georgia House of Representatives, as well as executive director of Deal's gubernatorial transition committee. Carr has bachelor's degrees in both finance and agricultural engineering from University of Georgia. The appointment was approved by the Senate; House confirmation is anticipated.

**Meg Pirkle** was named director of the Permits and Operations Division at Georgia DOT. The 22-year GDOT veteran has served in various management roles, most recently as executive assistant to the chief engineer. Pirkle will continue in her role as GDOT's program manager for the Federal Stimulus Package. She is a registered professional engineer,

and has a bachelor's degree in civil engineering from Vanderbilt University and a master's degree in transportation engineering from Georgia Tech.

**Bayne Smith** was named district engineer for District 1. He was most recently vice president of Surface Transportation in the Atlanta office of URS Corporation. Smith has over 20 years of experience in transportation, including 10 years with Georgia DOT in various engineering positions up to assistant office head. He has a bachelor's degree in civil engineering from Georgia Tech, a professional engineering license and professional traffic operations certification.

**Rachel Brown** was appointed district engineer for District 7. The 20-year GDOT veteran was most recently assistant state maintenance engineer. She previously served as assistant district engineer, as well as acting district engineer for D7. Brown has an associate's degree in civil engineering technology and is Georgia DOT's first female district engineer.

**DeWayne Comer** has been named District 6 district engineer. Comer, a 22-year GDOT veteran, has a bachelor's in civil engineering technology from Southern College of Technology. He is a licensed professional engineer. He was most recently assistant district engineer/preconstruction engineer for D6.

Georgia DOT's **Transit Programs and Fiscal Services** received three U.S. Department of Transportation (USDOT) **Federal Transit Administration (FTA) Region IV Achievement Awards** at the FTA Annual State Programs Team meeting early this year. GDOT was recognized as FTA's FY 2011 Most Improved Grantee; for Outstanding Achievement in Grant Closeouts; and for Outstanding Achievement in FY 2011 FTA Reviews.



GDOT's **2010-2011 Fact Book** received two awards for graphic design, editorial content and

overall communications effectiveness. The **Creative & Design Services** team in the **Office of Communications** was recognized by the **National Association of Government Communicators (NAGC)** with a second place "2012 Blue Pencil & Gold Screen" award in the *Special Purpose Publication* category. The NAGC



National Association of Government Communicators

theme is *Government Communicators - Telling America's Stories*.



Awards for Publication Excellence

The Fact Book also received an "Award of Publication Excellence" in the international

**APEX** (Annual Print & Electronic Awards for

Publication Excellence) 2012 Awards in the *Special Purpose Brochures, Manuals & Reports* category.



Dana Lemon

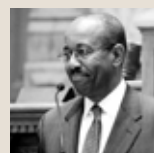
### DBE USAGE FOR TIA PROJECTS

The STB has adopted a resolution encouraging the use of Disadvantaged Business Enterprises (DBEs) for TIA-funded projects, regardless of whether federal funds are involved (DBE requirements normally apply to federally-funded projects).

"Whether GDOT or a local government is managing and delivering a TIA project, we strongly suggest that DBEs be used when possible," stressed District 13 Board Member **Dana Lemon**. "This resolution demonstrates the Board's proactive commitment to ensuring that under-represented groups participate in delivering transportation projects, and underscores the Board's role in making

decisions that contribute to statewide economic development."

With passage of the resolution, the Board also encouraged the use of small businesses and veteran-owned businesses.



Robert Brown

### BROWN RECOGNIZED BY GEORGIA TREND

In its May cover story, Georgia Trend recognized District 4 STB member and architect **Robert Brown** for professional and civic achievements, and named him **Most Respected CEO for 2012**. The article portrays a man whose qualities extend beyond business. Read the story at [www.georgiatrend.com/May-2012/Giving-Back](http://www.georgiatrend.com/May-2012/Giving-Back).

### WELLBORN RECEIVES DISTINGUISHED CITIZEN AWARD

Board member **Sam Wellborn** received the **2012 Distinguished Citizen Award** from the Chattahoochee Council of the Boy Scouts of America, headquartered in Columbus (GA). Wellborn was honored for "his distinguished career as a business leader, a community leader in the non-profit sector and as a long-standing public servant in his role on the State Transportation Board," said Council President Colin Martin.

The 13-member **State Transportation Board (STB)** determines policy and generally governs Georgia DOT. Each board member is elected by a caucus of Georgia General Assembly members from their specific congressional district. For more information and to view the monthly newsletter from your board representative, visit [www.dot.ga.gov/board](http://www.dot.ga.gov/board).

# GeoTRAQS Improves Tracking and Information Gathering

By Jill Goldberg and Liz Rothman

## Improved transportation decision-making. That's the goal of GeoTRAQS (Geographic Transportation Reporting Analysis and Query System)

Georgia DOT's new Web-based application brings data together from a variety of Department program areas for staff, consultants and the public to use for transportation decision-making. GeoTRAQS allows us to view, understand, and visualize geographically-referenced data in ways that reveal relationships, patterns, and trends.

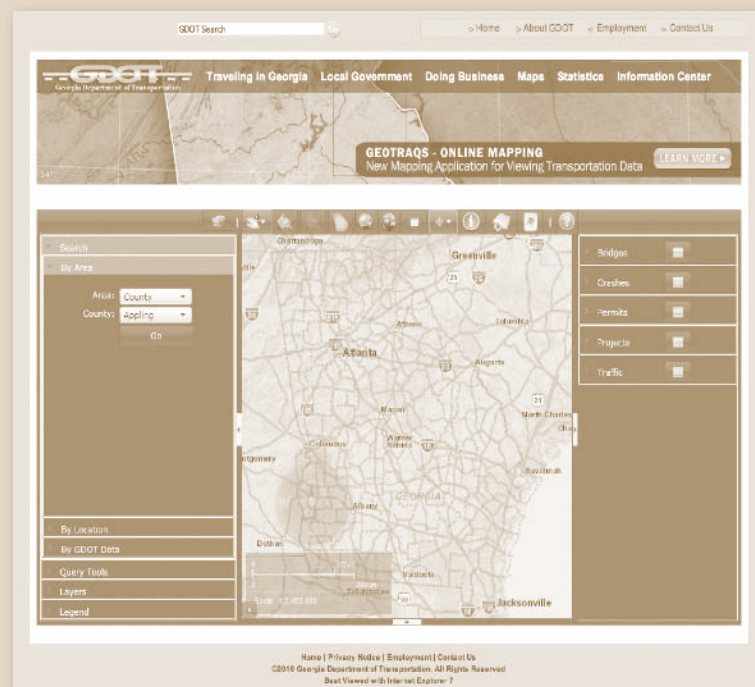
Based upon the Department's existing Geographic Information System (GIS), GeoTRAQS finds and consolidates data to improve visualization and spatial analysis. The new features of the program—especially the improved online mapping—enhance communications efforts with stakeholders. Use GeoTRAQS to map locations of current projects, as well as historical projects from as far back as 1918. It also includes bridge, crash, permit, and traffic data.

"The IT team did a fantastic job launching this new system," Georgia DOT Chief Information Officer Jeff Hill commented. "This is a perfect example of our people working together to make our information sources more user-friendly and effective for the citizens of Georgia."

### GeoTRAQS features

- Improved interface and maps
  - Display street, imagery or other background maps
  - Collapse or expand menus
  - Use Web page or full-screen mode
- More options for searching by area, location, or Georgia DOT data using criteria in pull-down menus
- Query map directly using Spatial Query Tools to draw a boundary or buffer on the map
- Query data directly using Attribute Query Tools
- Turn layers on or off or change their transparency in the Layer list
- Detailed identification of features displayed on the map

Check out GeoTRAQS:  
[www.dot.ga.gov/maps/geotraqs](http://www.dot.ga.gov/maps/geotraqs)



to previous Milepost stories

Georgia DOT prepares for project delivery

## Transportation Referendum July 31

The statewide **2012 Transportation Referendum is Tuesday, July 31**. That's when voters will decide if 12 designated districts across Georgia will collect a one percent sales tax for the next 10 years to be devoted exclusively to local and regional transportation projects.

In districts where the referendum passes, GDOT is responsible for project delivery. And project delivery is what Georgia DOT does - an independent study ranked Georgia DOT first in the country in on-budget project delivery and second in on-time delivery.

Georgia DOT will deliver Transportation Referendum projects using a streamlined delivery

process with strict attention to budgets and schedules, and coordination with local governments. The Department will also work extensively to structure agreements with Regional Commissions and local governments to enable them to deliver as many projects as possible in their communities.

GDOT will complete Referendum projects on time and on budget. For information and to view a video about GDOT's role in project delivery, visit [www.dot.ga.gov/transportationreferendum](http://www.dot.ga.gov/transportationreferendum).

Georgia MultiModal Passenger Terminal

## Environmental review underway for MMPT

By David Spear

Georgia DOT, in partnership with federal agencies, is preparing an Environmental Impact Statement (EIS) on the proposed Georgia MultiModal Passenger Terminal (MMPT) – a key initial step toward the project's development. The EIS, an essential component of the National Environmental Policy Act (NEPA), evaluates actions to mitigate potential environmental effects of alternative development at the site.

The Environmental Protection Agency, on behalf of the Federal Transit Administration and Georgia DOT, released a Notice of Intent advising of the EIS process. Georgia DOT hosted open houses in the spring to introduce the project, answer questions and obtain public comment on the need and purpose of the project, alternatives and their potential impacts,

which are all part of the EIS. A public information open house will also be held in October. It is anticipated that the EIS will be completed by spring 2013.

The Georgia MMPT will bring together various ground and rail transit services in a centralized downtown location to create a vital transportation connection for metro Atlanta and all of Georgia. It will serve as a hub for current and proposed transportation networks, including the existing MARTA rail and bus systems, the regional express bus systems, and the Georgia railroad network.

Visit [www.dot.ga.gov/mmpt](http://www.dot.ga.gov/mmpt), or Facebook: [www.facebook.com/georgiammpt](http://www.facebook.com/georgiammpt), or Twitter: [www.twitter.com/#/georgiammpt](http://www.twitter.com/#/georgiammpt).

Operational improvements show promising results

## Creative traffic management on GA 400

By Jill Goldberg

Georgia 400 is a popular route for commuters in the metro Atlanta region. Georgia DOT is working on new and innovative ways to address the growing traffic in the area.

### Flexible shoulder lanes

Announced by Governor Nathan Deal during his annual state of the state address, flexible shoulder lanes opened for traffic in May - and results are promising. Working with transportation partners, the Department implemented flexible shoulder lane usage for passenger vehicles along southbound sections of GA 400. Georgia code allows for shoulder lanes to be used by vehicles during peak congestion periods; MARTA

and GRTA coach buses have traveled in the shoulder lanes for years. The Department expanded the flexible shoulder lane use to include commuter vehicles from 6:30-9:30 a.m. Monday through Friday southbound beginning at Holcomb Bridge Road and ending at the North Springs MARTA Station exit. Work included new signage; restriping of lanes across bridges; new emergency pull off areas; enhanced HERO coverage; and coordination with local governments and first responders.

While preliminary numbers show a reduction in travel times on GA 400 and a decrease in delays on Holcomb Bridge Road, more will be known in the fall when school is back in session. GDOT will continue to monitor traffic flow to determine if there is sufficient improvement to warrant expanded use of shoulder lanes - with possible implementation on GA 400 northbound during the evening commute between the North Springs MARTA Station and Holcomb Bridge Road.

### Auxiliary lane conversion

Auxiliary lanes run from entrance ramp to exit ramp and give merging and exiting traffic a lane of their own. In June, GDOT completed the conversion of the southbound auxiliary merging lanes between McFarland Parkway and Holcomb Bridge Road into a continuous thru-traffic travel lane. With the conversion, motorists entering GA 400 southbound at Windward Parkway, Old Milton Parkway, Haynes Bridge Road or Mansell Road now must immediately merge into through traffic.

"This new configuration allows us to maximize use of our existing pavement resources," said Commissioner Keith Golden. "By returning to a traditional entrance and exit merge format, we are able to provide motorists with more capacity and better mobility without the cost of having to pave a new lane."

Addressing safety, congestion and construction costs

## Georgia's first Diverging Diamond Interchange Opens in DeKalb

By Susan Long, Perimeter Community Improvement Districts

**Can you DDI?** Thousands of Metro Atlantans are doing the moves. And you can too.

### Arrive. Crossover. Drive.

That's the mantra now that Georgia's first Diverging Diamond Interchange (DDI) successfully opened in June at I-285 and Ashford Dunwoody Road in DeKalb County.

The DDI design shifts the flow of traffic to the opposite side of the road to reduce points of traffic conflict and improve traffic flow and safety.

"This is a creative, proven, low-cost design that provides immediate traffic congestion relief," said Yvonne Williams, president and CEO of the Perimeter Community Improvement Districts (PCIDs), which initiated the project. "We are expecting that under normal, free-flowing traffic conditions on surrounding highways, traffic delays in evening rush hours will be reduced as much as 20 percent."

"The DDI is an innovative intersection design that not only promotes safety, but also addresses increased capacity and minimized project cost," said Georgia DOT Commissioner Keith Golden, noting that construction time is reduced and traffic flow is maintained while contractors perform

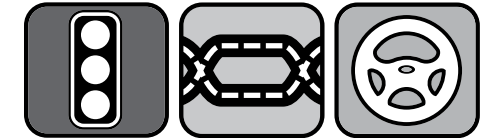
their work. "We anticipate that the DDI concept will become an option for congested metro area interchanges." Two DDIs are also planned on I-85 in Gwinnett County - one at Pleasant Hill Road and the other at Jimmy Carter Boulevard.

The I-285 and Ashford Dunwoody Road DDI is a partnership project between the PCIDs and Georgia DOT. In 2009, the PCIDs invested \$100,000 to hire Moreland Altobelli Associates (MA) to conduct pre-engineering studies and find a new concept for the interchange, which is a major gateway to Central Perimeter, the largest office market in metro Atlanta.

"When I-285 was built in 1969, much of Perimeter was still farmland," Williams noted. "Today, more than 123,000 people work in Perimeter each day and nearly 90 percent of those commute to the area. And of the nearly 67,000 people who live in Perimeter, almost 80 percent commute out of the area to work. So changes needed to be made to accommodate this tremendous growth," Williams said.

Moreland Altobelli recommended the DDI design, which originated in France. The PCIDs received funding from DeKalb County and a grant from the State Road and Tollway Authority to allow MA to create a DDI design for

## CAN YOU DDI?



ARRIVE ► CROSSOVER ► DRIVE

the interchange. GDOT funded the \$4.6 million construction cost and awarded a contract in August 2011 to E.R. Snell Contractor, Inc. of Snellville.

"MA and the PCIDs actively coordinated with GDOT and the Federal Highway Administration (FHWA), which allowed the project to move from idea to concept to construction in record time," said MA President Buddy Gratton.

Because of how left turns are handled within the DDI, total crashes were down 46 percent in the first year of operation of the nation's first DDI, which opened in Missouri in 2009. Left turn type crashes were eliminated and left turn right angle type crashes were down 72 percent.

For more information about the Ashford Dunwoody Road DDI at I-285, visit: [www.CanYouDDI.org](http://www.CanYouDDI.org).

## Driving through a DDI is easy. Just follow the road!

A diverging diamond interchange allows vehicles to turn onto the freeway with less time spent at traffic signals; vehicles turn left onto on-ramps without stopping after crossing through one set of lights. In our DDI, the traffic on Ashford Dunwoody Road

briefly crosses from the right side of the roadway to the left side at a ramp intersection signal so vehicles may make free left turns onto the I-285 freeway on-ramp. Traffic crosses back to the right side of the road at a second ramp intersection. Signs, striping, curbs and

concrete barriers are designed to guide and safely separate opposing traffic as it moves through the interchange. To view a brief video about DDIs, visit [www.perimetercid.org/ddi.html](http://www.perimetercid.org/ddi.html).

## Rudbeckia hirta.

No, it's not a typo. It's the botanical name for the Black-eyed Susan, one of two wildflower specialty auto tags whose purchase funds Georgia DOT's **Wildflower Program** (the other is Purple Coneflower). The program enhances Georgia's natural beauty with colorful roadside blooms. This summer, Cosmos wildflowers will be planted statewide, with native variety plantings come fall. For a free packet of wildflower seeds, or more information on the Wildflower Program, including a link to the Georgia Department of Revenue auto tag website, visit [www.dot.ga.gov/wildflowers](http://www.dot.ga.gov/wildflowers). Or call 404.631.1829.

## Project delivery. It's what we do.

The statewide **2012 Transportation Referendum** is Tuesday, July 31. That's when voters will decide if 12 districts across Georgia will collect a one percent 10-year sales tax to exclusively fund local and regional transportation projects. GDOT's role is project delivery in districts that pass the referendum. The Department will deliver Referendum projects on time and on budget. See article on page 5. For information, visit [www.dot.ga.gov/transportationreferendum](http://www.dot.ga.gov/transportationreferendum).

## Georgia Tech named University Transportation Center.

U.S. DOT selected Georgia Institute of Technology to lead nine colleges and universities in Georgia, Florida and Alabama to focus on transportation issues of importance to the nation, state and metro areas. The \$7 million effort is funded through a \$3.5 million federal grant with matching funds from sources including state DOTs, the Woodruff Foundation and others. The consortium includes University of Georgia, Georgia State University, Georgia Southern University, Southern Polytechnic State University, Clark Atlanta University, and Spelman College.

## We Are In Motion!

**In Motion** is Georgia DOT's official e-newsletter. If you'd like to receive our monthly email about how we are working to maintain and improve transportation throughout Georgia, please email [inmotion@list.dot.ga.gov](mailto:inmotion@list.dot.ga.gov).

## Don't barrel through work zones.

That was the theme for April's **Work Zone Safety Awareness** week, but of course the message holds true all year long. Work zones are dangerous for workers and motorists alike. In fact, drivers and their passengers represent 80 percent of the fatalities in highway work zone accidents. Drivers are urged to stay focused and avoid distractions and obey Georgia's no texting while driving and Move Over laws. *Drive smart to arrive alive.*

## GDOT recognized for clean commute initiative.

The **Clean Air Campaign** (CAC) designated GDOT a Platinum Partner for its commute and telework program that resulted in 34 percent of employee commutes to and from the Midtown general office last year involving alternatives to single occupancy vehicle trips. GDOT employees (registered with the CAC) who carpooled, vanpooled, took transit, biked, walked and teleworked saved 1.5 million vehicle miles. For information on the CAC, including telework, compressed work week and flextime programs, visit [www.cleanaircampaign.org](http://www.cleanaircampaign.org). To sign up for the CAC's Commuter Rewards Program, visit [LogYourCommute.org](http://LogYourCommute.org).

## Hurricane season runs through November 30.



Tropical systems from the Atlantic Ocean and Gulf of Mexico can wreak havoc in Georgia, especially in the six highest-risk coastal counties of Bryan, Camden, Chatham, Glynn, Liberty and McIntosh. During a hurricane, wind gusts exceeding 74 mph and torrential rain can not only cause damage to the shoreline, but a direct hit can result in a storm surge that requires a mandatory evacuation. In that event, I-16 eastbound lanes would become "contra-flow lanes," or reverse lanes. All lanes would be westbound traffic only from Savannah to west

of U.S. 441 in Dublin, a total of 125 miles. In an emergency, Georgia DOT can "contra-flow" other interstates as well. For a PDF of GDOT's hurricane brochure, as well as preparation tips, shelters, a map of evacuation routes and links to local emergency and national hurricane and weather websites, visit [www.dot.ga.gov/travelingingeorgia/severeweather](http://www.dot.ga.gov/travelingingeorgia/severeweather).



## From scouting crash scenes to issuing permits, District 3 often gets a leading role District Office Ready for "Action" in Support of Film Industry

By **Carla Murphy**

**L**ong before directors scream *Lights! Camera! Action!* on film locations across the state, Georgia DOT is often on the scene – literally.

From assisting with scouting ideal locations for high-speed chase scenes to identifying the most picturesque community to depict 1950's Atlanta, **Kimberly Larson** and the **District 3 staff** may play a significant, early role. While she spends considerable time managing media and community relations as the District Communications Officer, Larson often performs another important duty – working with the state's Department of Economic Development (GDEcD) in support of Georgia's \$2.5 billion film production industry.

"I have come to learn that this is an important part of my job," says Larson, noting the direct and indirect economic impact on communities in her district and across the state. "When we are called on, we are always prepared to assist and offer suggestions to location managers and film industry folks looking to shoot here."

From the films **Zombieland**, **Footloose**, **Fast 5**, **The Odd Life of Timothy Green** and **Joyful Noise** to the television shows **Walking Dead** and **Drop Dead Diva**, Larson has some familiarity with them all – having scouted State Route 20 in Henry County for a chase scene in **Fast 5** and prepared announcements for the pacing of traffic on Interstate 85 in Henry County for the Dolly Parton and Queen Latifah movie, **Joyful Noise**. It also was Larson who, working with other Georgia DOT staff, identified a bridge over the Chattahoochee River in rural Heard County for a scene in **Footloose**.

"For the Heard County bridge location, we worked with the Department of Natural Resources and the Riverkeepers to make sure that in using it, there would be no adverse

environmental impact to the river," she added. "The goal is to minimize impact to the environment and to traffic on our state routes and interstates."

And while Larson is the face and voice of the Department in District 3, she notes that support comes from many others at Georgia DOT. District Engineer David Millen, Traffic Operations, the Office of Permits and others all make certain film companies have proper insurance, have signed all paperwork and secured necessary permits.

Larson, who joined the Department in 2007 as the district's communications officer, has learned that, while varied, her job requires flexibility and patience, particularly as the Georgia DOT delivers on one of its most important goals – encouraging and supporting economic development across Georgia.

And the impact of that work is significant. According to GDEcD, the direct economic benefit of film production in Georgia exceeded \$2 billion in 2011. And Larson has seen those benefits firsthand. Film crews do business in communities they visit, often using hotels, restaurants and stores and hiring support workers like makeup artists, truck drivers, painters and security guards.

And why does her district appear to be so popular? "What we are told is that the crews like to be an hour or hour and a half from Atlanta," she says from her office in Thomaston. "We can offer location scouts more options for rural, suburban, city and historic sites, oftentimes with minimal impact to motorists. So, we are Atlanta, without being in Atlanta."

Indeed.

# Anatomy of a HERO and His Truck

By **Liz Rothman**



**V**ernon Adger is justifiably serious and proud. He knows that his decisions and actions affect the lives of thousands

of commuters each day. And that his performance can be of ultimate significance in the life of just one person.

Adger is a **Highway Emergency Response Operator (HERO)**, a 16-year veteran of the original unit. He took a few minutes from his on-the-road activities to provide a look at the services HERO operators provide on metro Atlanta's highways and to offer a glimpse into the capabilities of the HERO truck.

"Our primary duty is to clear roads after an incident so that normal traffic flow is restored as quickly as possible," Adger explains. "HEROs also assist stranded motorists. We learn how to engage with the public. After all, when we meet a motorist, it's not necessarily the driver's best day."

## HERO training. Anything but basic.

Highway Emergency Response Operators undergo months of training. Classes include vehicle relocation (push, pull, drag); clearing roads; tapering traffic; basic car repair (to enable the motorist to get to the next exit); first aid; First Responder Certification; and handling hazardous materials (hazmat) like motor vehicle fluids.

Sometimes the HERO is the first responder on the scene of a serious accident—even before the ambulance arrives. In an accident with injuries, the HERO checks vital signs like blood pressure and respiration. When paramedics arrive, the HERO can provide time-saving information.

"When there are neck and back injuries—we don't move the victim—we stabilize them with a C-collar to prevent further harm," Adger says. "In unfortunate cases where the victim is in cardiac arrest, we use an AED (Automated External Defibrillator) to get their heart going."

## HERO truck. Everything in its place.

You'd expect the vehicle to carry the basics like repair tools, water, gas, antifreeze, and starter fluid. HERO vehicles also contain first aid supplies and the life-saving AED. There are safety devices like flares; and cones for visibility and for tapering traffic. Plus items to

prevent fuel contamination; fuel buster fire extinguisher; "Oil-Dri" to soak up diesel and gas into a solid form so that can be shoveled and taken away; and an A2 ring inflatable child's swimming pool to catch and contain spilled diesel from an overturned tractor-trailer.

### HERO Truck Features

- Highly visible – vehicle can be seen from a mile away
- Can pull an 80,000 pound 18-wheel tractor-trailer
- Large, lighted digital message board extends 12-14 feet high; designed to be seen by 70+ mph traffic
- External speaker
- 120-gallon fuel recovery tank
- Flood lights for visibility at night and to help accident investigators

Adger gets satisfaction from helping people. He says it's amazing to see how the HERO unit has grown over the years—from 12 operators in 1996 to 104 in 2012. "The job is challenging and rewarding. Each day is different. You must always be on your toes," he says. "It's humbling to be called an 'angel' when I help people out of harm's way."

Adger offers some simple driving advice we should all heed. "Eliminate distractions and stay focused," he cautions. "Be aware of your surroundings. No texting. No distractions. Just drive."

For more information, visit [www.dot.ga.gov/hero](http://www.dot.ga.gov/hero). To request HERO assistance on a metro Atlanta freeway, dial 511.

# Summer Construction Well Underway Roadworks 2012

By David Spear

**W**hile Memorial Day weekend traditionally marks the unofficial start of summer and the start of Georgia DOT's busiest construction season, this year was different - 2012's summer construction season began back in January. The state's mild winter gave GDOT an unusual—but welcome—window to begin some work early.

But there's still plenty left to do from now to late fall. No fewer than 20 major projects will occur this summer on Georgia's Interstate Highway System alone. They're among dozens of jobs across the state designed to improve mobility.

## New Construction Authorized

With one month remaining in Fiscal Year 2012, Georgia DOT began 265 new construction projects valued at over \$870 million for statewide road and bridge infrastructure improvements. The largest single projects include: \$27.8 million to resurface 22 miles of Interstate Highway 75 in Bartow and Gordon counties (expected completion: May 2013); \$16.8 million for construction of a new I-75 interchange at Union Grove Road south of Calhoun in Gordon County (expected completion: September 2014); and \$15.7 million for reconstruction of the I-75 interchange at Jodeco Road in Henry County (expected completion: summer 2015).

For details on these and other awarded projects, visit: <http://tomcat2.dot.state.ga.us/ContractsAdministration> (click on **Bid Notices/Reports**).

## Major Projects Opened To Traffic

GDOT DISTRICT 1

### Oconee County/Congressional District 10

1.5 miles of widening and reconstruction on Jennings Mill Parkway; construction of bridge and approaches over SR 10 Loop; installation of intersection Video Detection System. Open: 3/1/12

### Gwinnett County/Congressional District 7

1 mile of construction of bridge and approaches on SR 324 (Gravel Springs Road) over I-85/SR 403. Open: 4/30/12

GDOT DISTRICT 2

**Newton County/Congressional Districts 7 & 8** 1.1 miles of widening and reconstruction consisting of grading, drainage, base and plant mix resurfacing on SR 142. Open: 3/22/12

Although the Department looks to schedule work during off-peak travel hours, there will be need for occasional detours and lane closures as well as the establishment of several dozen highway work zones.

"Please be alert, cautious and patient when driving through project work zones," Commissioner Keith Golden noted. "Our work is weather-dependent and can be time-consuming. We will complete it as quickly as possible; our first priority always, however, is to complete it safely – for our workers and our system's many travelers."

For project details, visit our interactive summer construction map at [www.dot.ga.gov/roadworks](http://www.dot.ga.gov/roadworks).

GDOT DISTRICT 3

### Bibb County/Congressional District 8

4.7 miles of widening and construction of partial cloverleaf interchange on I-75 at Sardis Church Road. Open: 5/17/12 (two weeks ahead of schedule)

### Troup County/Congressional District 3

South LaGrange Loop Phase II – 6 miles of construction including construction of railroad bridge and approaches over South LaGrange Loop and installation of closed circuit television system (CCTV). Open: 12/19/11

GDOT DISTRICT 4

### Quitman County/Congressional District 2

11.3 miles of paving and shoulder rehabilitation on SR 50. Open: 12/15/11

### Baker County/Congressional District 2

15.4 miles of resurfacing and shoulder rehabilitation on SR 91. Open: 12/1/11

### Lee County/Congressional District 2

8.1 miles of resurfacing and shoulder rehabilitation on SR 32. Open: 12/31/11

GDOT DISTRICT 5

### Chandler County/Congressional District 12

.8 miles of widening for additional lanes on SR 23/SR 121. Open: 1/12/12

GDOT DISTRICT 7

### DeKalb County/Congressional District 5

.3 miles of culvert and bridge replacement with turn lane construction on SR 155 at Shoal Creek. Open: 4/16/12

State control is key

## I-75/575 Northwest Corridor Express Moves Forward

By David Spear



**T**he Northwest Corridor Express (NWC) transportation improvement project on Interstate Highways 75 and 575 in Cobb and Cherokee counties is back on track.

"This is a vital commuting and logistics corridor," Governor Nathan Deal noted. "Adding new lanes—and the new capacity they will provide—is critical to a continued high quality of life in Metropolitan Atlanta and to sustaining further economic growth for the region and for all of Georgia."

The NWC Express, formerly a part of the West by Northwest Public-Private Partnership (P3) procurement, was first planned for private firms to design and build the lanes, and make their money back from toll revenues. Governor Deal had concerns about private firms determining tolls and the state losing control over its ability to add other transportation facilities in the corridor. He asked GDOT for a better approach.

**The project will build two new managed lanes along the west side of I-75 between its interchanges with I-285 and I-575. The lanes will separate from the existing interstate and be reversible so as to carry traffic southbound during the morning commute and northbound in the evening. Above the I-575 interchange, one new reversible lane will be added in the I-75 center median to Hickory Grove Road and a similar new I-575 lane will extend to Sixes Road. The total length of the project is about 30 miles. A variable-rate toll, based on traffic volume, will be charged for drivers using the lanes.**

While the new version remains a P3, State Transportation Board Chairman Rudy Bowen said the method of delivery has changed. "It is streamlined, includes less private financing, and provides greater control for the state," Bowen explains. "GDOT will follow a 'Design, Build, Finance' approach where the winning bidder is responsible for design, construction and limited early financing, to be repaid by the state from toll revenues after the facility is open."

The project is expected to have a design-build cost of \$750-\$850 million, with a total cost of \$950 million. The Georgia General Assembly has designated \$300 million of state motor fuel taxes carried over from previous years. The State has been approved to apply for a \$270 million low-interest Transportation Infrastructure Finance and Innovation Act (TIFIA) loan guarantee from the federal government and Georgia DOT has programmed \$200 million from its construction budget. The private sector partner will provide 10-20 percent of the design-build cost, to be repaid by the State.

Five private sector groups responded to the Request for Qualifications (RFQ) issued in June. A shortlist of firms will receive a Request for Proposal (RFP) in December. Construction is expected to begin in 2014, with project completion in 2018.

"We need to make these improvements to our system, but we also have a responsibility to do so in a manner that best protects the sovereign interests of the state – insuring that Georgia forever retains control of its assets, their use and their future development," the governor said. "This does that; it is a much better way forward."

**T**he NWC Express is a part of the Georgia Express **Managed Lane System Plan (MLSP)**, a comprehensive, innovative, cost-effective approach to address two of the state's key challenges: decreasing transportation funding and growing traffic congestion. For more information on the MLSP, visit [www.dot.ga.gov/managedlanes](http://www.dot.ga.gov/managedlanes). For information on the NWC Express, visit [www.georgiap3.com](http://www.georgiap3.com).





# CONNECTOR

News for and about Employees of Georgia Department of Transportation

# Welcome

**MILEPOST** has a new dimension.  
It now includes **CONNECTOR**—  
Georgia DOT's employee newsletter.

CONNECTOR features letters, employee recognition, what's happening inside GDOT and essential information for employees.

So now, as well as reading CONNECTOR, employees receive the extra benefit of MILEPOST, which offers a broad view of what's going on in transportation across Georgia.

And through CONNECTOR, the public can get to know us from the inside. CONNECTOR is a great way to meet the individuals that service Georgia's transportation – the people who make Georgia DOT one of the top DOTs in the country.

We hope you like our new dimension. As always, we welcome your comments. Email [erothman@dot.ga.gov](mailto:erothman@dot.ga.gov)

[mygdot.dot.ga.gov](http://mygdot.dot.ga.gov)

Charlie Williams and Jesse Stringer

## Above & Beyond: Customer Service Award

By *Julette Carter*



Charlie Williams and Jesse Stringer accept award from Commissioner Keith Golden.

Charlie and Jesse do not normally work together; however, fate and circumstance brought them together on December 29, 2011—an ordinary work day that turned out to be so much more.

**Charlie Williams** (Maintenance Equipment Operator, District 4 Area Wide Crew) and **Jesse Stringer** (Equipment Operator 2, District 4 Area Wide Asphalt Crew) are model employees who not only strive for excellence while performing their everyday jobs, but also go above and beyond for others.

Williams, a true team player, stands ready to assist when needed. Even when called out at night to help with emergencies, he doesn't hesitate; he is there to perform. Williams is a dependable employee who goes above and beyond what is expected to serve his customers.

Stringer is on the snow and ice team and assists the northern districts when extra help is needed. He has worked many long hours at emergency events. Whether he is performing his day-to-day tasks or on a special assignment, he gives 110 percent effort. Stringer goes above and beyond to serve his customers.

On that fateful day, Charlie and Jesse were traveling on SR 37 in Calhoun County doing routine maintenance inspection—making sure lanes were clear and signs were in place. Their ordinary day turned into something extraordinary when they came upon an accident that had just happened. A van had left the roadway, and came to rest in a pond. Charlie and Jesse waded through the water and pulled the two children and the adult from the van to safety. After ensuring the individuals were safe on land, they notified their supervisor of the accident, who in turn notified the proper authorities.

Brad Cleveland, Area Engineer, District 4, nominated Williams and Stringer for the **Commissioner's Commendation for Excellence** in Customer Service. He says: *These two employees' actions exemplify all the customer service qualities of being helpful, courteous, accessible, responsive and knowledgeable. Because of Charlie's and Jesse's quick thinking, brave action and willingness to go the extra mile, the lives of three people were saved; these men rescued and brought them to safety. We want to acknowledge these brave individuals and thank them for their service to the citizens of Georgia.*

**Recognize someone doing something exceptional!** The Commissioner's Commendation for Excellence in Customer Service recognizes Georgia DOT employees or teams who consistently perform at a high level or go "above and beyond" in providing customer service to internal or external customers. **To submit a nomination, contact Customer Service Manager Julie Carter at 404.631.1835 or [jucarter@dot.ga.gov](mailto:jucarter@dot.ga.gov).**

**Commissioner's Commendation Winners:**  
(March 2012)  
**Tamrat ("Tim") Kassa**, Special Studies Branch Chief, Planning  
**Thomas Mims**, Assistant District Maintenance Engineer, District 7  
**Jay Napoletano**, Micro Systems Support, District 3 Traffic Operations  
**Tiffany Robinson**, ROW Specialist Trainee, ROW/Local Government  
**Dwonna Smith**, ROW Specialist, Property Inventory and Disposal Unit  
**Jesse Stringer**, Equipment Operator 2, District 4  
**Care Whitmore**, Utilities Permit Engineer, Utilities  
**Charlie Williams**, Maintenance Equipment Operator, District 4

Attn: Emergency Service Supervisor,  
...On February 29, 2012 I had a tire blow out on I-75 just north of the downtown area just before the exit for I-85 north. I had just started to call for help when one of your emergency trucks pulled up and asked if I need help, which I did. I do not remember the name of your driver, but I would like to thank him and the two other service people who came to help. They had me out of harm's way in less than 30 minutes. They did a great service for me and my family.

The service you provide is great. I hope I never have to use it again, but if I do I hope that your staff is there. They do a fantastic job under very dangerous conditions.

Again, thanks for your help...Keep up the great job on the highways; all of us traveling in Georgia thank you.

Have a great day,

G. Mann Jr.

I was traveling on I-285 this morning when my tire blew out. Within minutes a HERO truck was there (I never made a call) and Patrick Dudley provided outstanding assistance. He confirmed I was okay and then proceeded to change my tire. After he finished I tried to give him \$\$ and he quickly declined and said something to the effect that "it was a blessing to help you." WOW, this is the caliber of employee I want working for me, Wasn't sure how to get this feedback to the right person, so I hope you will forward it on accordingly because I know that most feedback tends to be negative. I guess you can say HERO is my new HERO!

T. Anderson

Hello,  
I wanted to comment on the most excellent service I received on I-85 by one of your HEROs (E. Redd #448).

My suburban truck hit some kind of metal and immediately punctured one of my tires. I was in a rock and a hard place between I-85 and the ramp of 285 east. Realizing my spare had no air, and the wait for my insurance company to get a tow truck would be a forever...E. Redd pulled up behind us and really saved my day and my wallet. She also saved time I can spend with my visiting mother which I barely get to see once a year for a few days. She was fast, kind, courteous, and professional. She knew exactly what to do and always kept safety as a focus!

I always see these HERO vehicles, but never knew our tax dollars paid for them. Please continue to do a great job and please offer some positive recognition to E. Redd.

Thanks again!

H. Claudio

**Editor's note: The HERO (Highway Emergency Response Operators) program is 80 percent federally funded, with the remaining 20 percent paid through a sponsorship by State Farm.**

I live in Cobb but this morning at about 7 am I blew out a tire near the ramp from I-75 S to I-85 N. I called my roadside assistance but a HERO unit got to me first. I have nothing but admiration for the gentleman who came to my aid. He was so nice and literally risked his life to change my tire and get me to safety. What an amazing service and comfort to know that in an emergency the HERO units are staffed by such wonderful people. I didn't get his name - but he was great. Thanks for keeping me safe and being a true HERO!

K. Cahill

I've never had the opportunity to have any dealings with GA HERO, but on May 24, 2012 at 3 pm on I-675 south my wife had a blow out and even though she called me to change the tire a HERO tech showed up and changed the tire for us. The impressive part of this story is the professionalism and courtesy shown by this man. I did not get his name and the only gratuity he would accept was a thank you and handshake. The truck number was 4520260. I hope this comment reaches the highest level of HERO and that this individual be provided a great atta boy. He truly exceeded the standards of service I would expect from a roadside assist. Thank you for a job well done.

D. O'Connor

**Editor's note: the HERO referenced is Sam Khamphavanh**

This is just a comment to thank the kind man who works for the GDOT that helped us. On May 18, 2012, around 6:30 pm, my family and I were traveling from Florida to Michigan. In the heart of Atlanta, right near the Peachtree St. exit on I-75, we had a flat tire. Needless to say we had to pull over and try to fix it. Driving through Atlanta is always a source of stress for us. Having a flat tire while driving through was exceedingly worrisome. Less than five minutes after pulling to the side of I-75, a large yellow truck with flashing red lights pulled up behind us. A member of your team got out and changed our tire for us. In less than 15 minutes from stopping, we were back on the road. This man was extremely kind and knew exactly what to do. He refused any money for his help, stating it was, "a free service." We did not get his name but wanted to extend another thank you to him. Too, we just wanted to mention that the top of his truck said H.E.R.O. This is how we felt about this man on that day. Thanks again.

E. Dryer

You have two employees that went beyond what was expected of them. My father had a flat tire on the side of the road in Floyd County. Jesse Burkhalter and Richard Hollaran (District 6, Area 4, Area Wide Maintenance) stopped to assist my father and stayed and helped get him going again. I am a state employee as well, and I am very proud of our state employees that will go the extra mile to ensure that someone is taken care of. In my agency we call it good customer service, and these 2 individuals provided good customer service to my father. Very proud of them and the GDOT.

T. Hawkins

Please share your letters and e-mails with CONNECTOR.  
Email [erothman@dot.ga.gov](mailto:erothman@dot.ga.gov).

District 5 receives best overall score

# GDOT Equipment Operators Display Skills at Statewide Competition

By **Liz Rothman**

**S**afety and training were tops on the agenda for the **GDOT Equipment Operators Safety and Training Conference** held in May at the fairgrounds in Perry. Georgia DOT equipment operators from districts across the state avoided obstacles and maneuvered in tight spaces in events like parallel parking, alley dock and serpentine maneuvers. Each participant completed a pre-trip inspection test before starting their course event. The driving skills “roadeo” competition determined the “best” driver in six categories. Winners will participate in the Southeast Regional competition in September.

“We have some outstanding employees at GDOT; the display of technical skills during this event was amazing”, said Georgia DOT State Maintenance Engineer Eric Pitts. “The operators performed intricate maneuvers while avoiding obstacles and while being timed. This shows the high level of expertise we have. I am proud of our staff and the work they perform – often in dangerous conditions.”

*Best overall district score went to D5. Congratulations to all!*

### Single Axle Dump Truck

- 1st – Robert Norwood, D5
- 2nd – Demetrius Ford, D5
- 3rd – John O’Hare, D5

### Tandem Axle Dump Truck

- 1st – Slade Gabriel, D1
- 2nd – Mark Manning, D5
- 3rd – Ken Harris, D5

### Tractor Truck w/Lowboy Trailer

- 1st – Rallie Ogburn, D3
- 2nd – Alex Jenkins, D5
- 3rd – Joey Anderson, D5

### Motor Grader

- 1st – James Spradley, D5
- 2nd – James Nicholson, D6
- 3rd – Hal G. (Greg) Free, D1

### Backhoe

- 1st – Jeff Weathers, D5
- 2nd – Jesse Thurmond, D1
- 3rd – Alex Johnson, D2

### Tractor w/Mower

- 1st – Jeff Sexton, D4
- 2nd – Howell Scott, D6
- 3rd – Robert Smith, D6

## CONNECTOR SHORTS

■ **Tommy Pace** (Bridge Inspection Technician III), was honored by the State Transportation Board with a resolution for his military service and dedication to our country. We are proud to welcome you back to GDOT!

■ **Roadway signage unveiled for airport’s new international terminal.** Signs seemingly appeared overnight on Atlanta’s roadways as GDOT District 7 personnel unveiled signage directing motorists to Hartsfield-Jackson International Airport and the new Maynard H. Jackson, Jr. International Terminal that opened in May. Domestic passengers access the terminal via I-85 and international passengers use I-75. “Developing and placing the signage was complicated,” Commissioner Keith Golden said. “D7 did a terrific job in directing folks to where they need to go.”

■ **Update your Outlook profile in two minutes (or less).** Great customer service begins with efficient processes so individuals can quickly get the help they need. Accurate contact information in Outlook is essential. Help GDOT reach its goal to have all employee Outlook profiles updated. Visit <http://gdot-go-mead:8888>.

■ **Scholarship awards.** The deadline to apply for a 2012 Georgia DOT Scholarship Award is September 1. GDOT employees and students majoring in a transportation-related field and enrolled in an accredited college or university in the Southeastern U.S. are eligible. Visit [mygdot](http://mygdot) and click on **GDOT Scholarship Award**.

# Congrats To All!

## Retirees

(March 1 - June 1, 2012)

- Robert T. Adams
- Myron K. Banks
- Marvin Bivins
- Shelia Hayes Brooks
- Kenneth O. Brown
- Martin L. Bryant
- Teresa Hammonds Bunch
- Kenneth H. Burton
- Gary Lamar Childers
- Marion L. Clements III
- Keith D. Collins
- Alan M. Dalton
- Thomas Lynch Daniel
- Jerry Davis
- Lloyd R. Davis
- Dennis J. Dewberry
- Ezekiel Dillingham
- Thomas Clyde Dodson
- Willie L. Drayton
- Roxann M. Eberhart
- Howard D. Edwards
- George E. Faulkner
- Horace M. Fuller
- Ronald Gee
- Ronald W. Harris
- Betty Jean Helms
- James C. Hicks
- Timothy Allen Jacks
- Mary J. Jackson
- Arthur Johnson
- Corliss H. Johnson
- Gregory J. Johnson
- Felecia H. Jones
- James T. Jones
- Steven J. Kish
- James Rufus Kitchings
- Andy Howard Lewis
- Fred A. Lindsey
- Jackie Paris Little
- Benny R. Lomineck
- Alvin Luther Lunsford
- Raymond Bryce Massey
- Raymond Matthew McKenzie
- Harry C. Milton
- Jerry V. Owens
- Carolyn S. Patterson
- Bryant R. Poole
- Johnny D. Quarles
- Jimmy Oliver Rogers
- Patricia Kaye Rubino
- Richard L. Salisbury
- Mickey D. Skipper
- Jack A. Sloan
- Calvin Lee Smith
- Ricky E. Smith
- Kevin Wayne Sprouse
- Eric L. Tatum
- Stephen A. Taunton
- Wayne M. Tippens
- Michael Torrence

- Joe L. Walker
- Lester Ray Wallace
- Garland S. Whatley
- Lory E. White
- Donald E. Wiley
- Dale P. Williams
- Glenn Allen Williams
- Lillie Mae Williams
- Roosevelt Wilson
- Stephen G. Wilson

## Service Anniversaries

(January 1 - July 31, 2012)

### 42 YEARS

- Rick W. Deaver
- Paul V. Liles Jr.

### 38 YEARS

- Janice S. Scott

### 34 YEARS

- June E. Brown

### 33 YEARS

- Nancy L. Bolen
- Stanley J. Brown
- Gene E. Burden
- Leroy Campbell
- Frances M. Castle
- Pamela G. Digsby
- Marlene Garrard
- Marvin L. Nicholson
- Doris Clarke Osby
- Mildred Angelin Swanger
- Roy D. Williams

### 32 YEARS

- Irene A. Belinfante
- Kim R. Brown
- Rebecca Ann Cabe
- Cynthia D. Christian
- Timothy S. Christian
- Cora Genese Butler Cofield
- Jennifer Harris-Dunham
- Gideon Henley Jr.
- Robert S. Knight
- Matthew Little
- Terry M. Rogers
- Richard E. Sawyer
- Lori T. Spiegel
- Lesa A. Walker
- Richard D. Williams
- Beauford L. Wright

### 31 YEARS

- David C. Adams
- Nicky Lee Brinkley
- Leonard Burch
- Donna Cunningham

- Ricky E. Hardenbrook
- Donald J. Johnson
- Nanette Francine Lee
- Glenda Todd Maner
- John E. McKenzie
- Harold D. Mitchell Jr.
- Dorothy L. Morris
- Billy R. Terry
- Kenneth E. Thompson
- William B. Whitecotton
- Jeff Lamont Wilkes

### 30 YEARS

- Lionel Alexander III
- Melisa S. Allen
- Billy C. Boyd
- Thomas Perry Brantley
- Lola Ree Cates
- Larry J. Cooper
- Steven Lamar Gafford
- Jerry M. German
- Alex Johnson
- J. Scott Kordys
- James R. Price Jr.
- Gerald M. Ross
- James Robert Sams
- Richard E. Williams
- Stardina L. Wyche

### 25 YEARS

- Angela Thompson Alexander
- Angelia R. Anthony
- Cecilia J. Ashley
- Robert Stephen Ashley
- Clay C. Bastian
- Cemonia Beall
- Eddie B. Brown
- Lynn H. Brown
- Ocheler Otto Brown
- Charles J. Byrd II
- Betty Hitt Cone
- William H. Cooper
- Lawrence A. Copelan Jr.
- Samuel Morris Council
- Jamie Ellis Crisp
- Edison Crosby
- Lisa C. Deaton
- Wesley Morgan Duvall
- Kenny B. Dyer
- Roger Dale Fletcher
- Debbie T. Goff
- Hoyt Edward Gosnell
- Michael Gousha
- Rosemary C. Guy
- Robert E. Guyton
- Roy Hall Jr.
- Morris Charles Harmon
- Michael A. Harris
- Clarence Martin Hawkins
- Teresa A. Hickox
- Garry John Holcomb
- Thomas B. Howell
- David Allen Huff
- Lorna Ann Jefferson

- John Wesley Jenkins
- Michael David Johnson
- Wyatt Clark Johnson
- Daniel Wayne Jones
- Ronnie K. Jones
- Marc C. Jordan
- Donald J. LaFrenier
- Michael F. Lumpkin
- Johnny Steve Matthews
- George William McCarter
- Willie Eaton McCrary
- Izell McGruder Jr.
- Joseph Lanier Mixon
- Alesia H. Norman
- David Joe Pack
- James Merrill Page Jr.
- Curtis L. Perry
- Darin Glenn Purvis
- Genetha Rice-Singleton
- James Lamar Riggins
- Marshall R. Roberts
- Charles Edward Robinson
- Philip L. Sampson
- Dennis Steven Schreiber
- Gail P. Scott
- Richard E. Seckinger
- Terry Gene Shubert
- Travis Ken Silvers
- Ted Henry Simmons
- Edward Radney Simpson
- James S. Simpson Jr.
- Raymond M. Southerland
- Jerry Lee Spann
- Edwin Spell
- Patricia A. Spence
- Rachel C. Stevens
- Annette Henderson Stewart
- Roy Columbus Stewart
- Brent Andrew Thomas
- Stephen Foy Thomas
- Henry Lee Tucker
- Lewis B. Walker
- Terry L. Walker
- Bobby G. Watson
- Kenneth Paul Werho
- Howard Dale Westmoreland
- William R. Wilcher
- Mark J. Williams
- Quinton Bernard Williams
- Johnny R. Wilson
- Mattie Mae Wilson
- Jimmy D. Witherow
- Chris Douglas York
- Bradford G. Young

### 20 YEARS

- Deborah A. Ashley
- Charles Q. Banks
- Michael Bramlett
- Margaret L. Brown
- Dean Lennard Burgamy Jr.
- Kimberly R. Byers
- Samuel T. Caines
- Patrick N. Carmichael

# Congrats To All! *continued*

Kedrick P. Collins Jr.  
Brent E. Cook  
Henry Lee Covington  
Howard Danny Crane  
Normand E. Cressman  
Clyde Andrew Cunningham  
Robert E. Ensley  
Ronnie Faulks  
Norman Grate  
Doug James Grizzle  
Jerome Hannor  
Gerald T. Hargrove  
Michael Kendrick Hill  
Troy A. Hill  
Reneé G. Hollie  
Robert William Holtapp Jr.  
John Cory Knox  
William Michael Lankford  
Stephen T. Malinak  
Bonnie Elizabeth Mason  
Ivan J. Mason  
Robert T. McCall Jr.  
Terrell B. McMillan  
John Roger Mealor  
Shawynne M. Oliver-Simmons  
Lloyd Duane Powell  
Nasser F. Rad  
Kelvin Sanford  
Michael A. Sapp  
Julius C. Simmons Jr.  
Vyrlin Dewayne Stone  
Shirley S. Sumner  
Dale Ervin Sutton  
Robert Paul Tanner  
Richard Lamar Taylor  
Dona Lee Welch  
Darrell Bruce Welsh  
James K. Whitlock  
Joe Anthony Williams  
Michael Larry Williams  
Ruby Favors Williams  
Thomas Lee Wilson  
Margaret Ann Yarbrough

## 15 YEARS

Richard David Acree  
William Shane Adams  
Adesoji A. Adewale  
Merlene Allison  
Johnny Barber  
Barry Thomas Barnes  
Marcus G. Bennett Jr.  
Mark D. Bennett  
Kerby Blassingame  
Varick Braswell  
Denise Y. Brown  
Earl R. Brown Jr.  
Edward E. Brown  
Johnny Ray Burden  
Johnny L. Cantrell  
Samone McNeil Chapman  
Jerry F. Colston  
Robert Owen Cox  
Ralston Lee Crews

Tony J. Crosby  
Holly A. Cross  
Dwight Alvin Davis  
Jennifer L. Deems  
Mary Theresa Dunn  
Robert L. Edmond  
Jason L. Ellis  
Kendall Darwin Evans  
Tonya Renae Fair  
Charles D. Faulkner  
Mark Wayne Forsyth  
J.B. Gamble  
Sanders L. Gipson  
Van L. Green  
Michael Lane Griffith  
Stephanie M. Griner  
Bobby Warren Hardinger  
Laster Harper  
Darren Dewayne Hart  
Richard Hart Jr.  
Karen Elizabeth Higgins  
Carmen D. Hill  
Dexter Hobgood  
Christopher Lambert Horton  
James Croley Jackson  
Neil A. Kantner  
Wesley Jerome Kennedy Jr.  
John Louis Kent Jr.  
Sam Khamphavanh  
Manoucher Khoshnam  
Joseph B. King III  
Roxanne McIntosh  
Martin Luther Melton  
Michael Renaye Montfort  
Mary Delaine Morgan  
Michael Ray Moyer  
Kelvin H. Mullins  
James Edward Nicholson  
Alfred Roland Norton  
Justin J. Parrott  
Joseph W. Pedersen  
Marcia M. Phillips  
Barbara A. Pratt  
Chad J. Roberts  
Ernay L. Robinson  
Ralph Sales  
Steven S. Sanders  
Frank J. Seymour  
Arthur L. Smith Jr.  
Billy Joel Smith  
Brandon Antonio Steele  
Forrest W. Thompson  
Brian Keith Troha  
Alfred Turner  
Steven Henry Walker  
Janet Watts  
Tanya Chiquita West  
Nathaniel Whicker  
Henry Mcauthor White  
Otis Lee White Jr.  
Timothy J. Williams  
Lynda Chapman Willis  
Hayward L. Wood

## 10 YEARS

Andy William Adams  
Stephen Thomas Ainsworth  
Christopher B. Amos  
Hayward Anthony Andrews  
Charity L. Belford  
Charles I. Blue II  
Myriam D. Bracy  
Robert Milton Browning  
Jeremy T. Busby  
Jeffery L. Carroll  
Derrick D. Carson  
Terry D. Clark  
Isaac Matthew Clayton  
Roshare J. Cobbs  
Ginger Jones Collins  
Johnny W. Collins  
Mark E. Cook  
Christopher Corbin  
Michael C. Corn  
R. Joyce Cravey  
Gondra A. Crumbley  
Alvin Dywane Davis  
Veronica Maria Davis  
Elmer Clark Day Jr.  
Keith A. DeBowles  
Carlos Mallari Dizon  
Gary Bernard Dwight  
Jason Andrew Dykes  
Christopher J. Edmond  
Bradley R. Ehrman  
Christopher A. Ezell  
Kennon Clay Fagan  
Adams D. Ferguson  
Nathaniel Fisher Jr.  
Cassandra Evette Ford  
Douglas D. Franks  
Jill L. Franks  
Jeffrey Alan Graham  
Travis R. Graves  
David A. Gronbeck  
Brandon D. Harris  
Clarence Harris  
Alfonza Hill  
Bryan T. Hillyard  
Gerald Holley  
Barbara Gayle Holmes  
David A. Howard  
M. Aminul Islam  
Alex Berneil Johnson  
Ellen Marie Johnson  
Sharon Marie Johnson  
Theresa Mary Kaspereen  
Hollie T. Kendrick  
Joshua E. Kimbrell  
Casey D. Lane  
David Wayne Livingston  
Edward G. Long  
George A. Long  
Russell Irvin Maddox  
Clifton E. Marshall  
Monzy C. Mathews  
Desmoine D. Mathis  
James R. Mathis  
Raymond E. May

Renee Mays  
Amanda Lynn McCart  
Kevin L. Mercer  
Fletcher C. Miller  
Joshua Neil Miller  
Larry Morris  
Brent T. Murphy  
Barry C. Murray  
Matthew D. Needham  
Cassy Leanne Nettles  
Richard T. Parham  
Shannon Passmore  
David Miles Pinckney  
Curtis Dwayne Powell  
Troy R. Presley  
Randy Rathburn Jr.  
Cullen E. Reid Jr.  
Willis L. Richey  
Brennan Andrew Roney  
Laurie L. Ryan  
Ron K. Salter  
Curtis C. Scott  
Steven G. Seabolt  
Donnie L. Seay  
Ken Neal Simpson  
Toby L. Singleton  
Jane H. Smith  
Larry C. Smith  
Linda D. Smith  
Craig A. Solomon  
James A. Southerland Jr.  
Jerry R. Stewart  
Donald W. Taylor  
Joshua B. Taylor  
Stanford Lashawn Taylor  
Walter D. Taylor  
Lucretia A. Taylor-Gotel  
Atiya Jamila Thayer  
Ernest Thompson  
Melvin Thomas Timms  
Gayla E. Trice  
Tonya Tenille Turner  
Timothy E. Tyson  
Justin Luke Vaughn  
Tommy Dewayne Veal  
Wendell Wallace  
Albert Derwood Walton  
Tramonty Deshun Washington  
Larry Weaver  
Phillip Luther Webb  
Shane Donald Welborn  
David A. Westbrook  
Steve Ray Whitfield  
George B. Whittle IV  
Christa Laquanta Wilkinson  
Johnny Robert Williams  
Brian K. Woods  
Mark Edward Yelton

# Then & Now in Georgia Transportation

The **Sidney Lanier Bridge** in Brunswick, Georgia spans the Brunswick River in Glynn County. The bridge was named for nineteenth century Georgia poet Sidney Lanier who wrote *The Marshes of Glynn*, a poem that describes the area's saltwater marshes.



**Then:** The original Sidney Lanier Bridge was a lift bridge that opened in 1956. It was twice struck by ships; a 1972 hit caused partial collapse and resulted in 10 deaths. In 1987, the bridge was struck again. This undated photo of the original bridge is courtesy of Office of Bridge Design.

**Editor's note: The printed magazine contains an incorrect "Then" photo. This on-line version is correct. We regret the error.**

**Now:** This photo (circa 2011) shows the current cable-stayed bridge that was built in 2003 as a replacement to the original lift bridge. It is Georgia's tallest cable-stayed suspension bridge and longest spanning bridge.

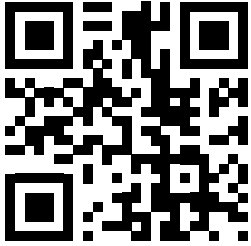
Photo source: CEDRIC MOHR cmohr@dot.ga.gov



Please share your Georgia transportation-related THEN & NOW photos with MILEPOST. Email: [erothman@dot.ga.gov](mailto:erothman@dot.ga.gov).

**Georgia Department  
of Transportation**

Office of Communications  
One Georgia Center  
600 West Peachtree Street  
Atlanta, GA 30308  
Phone: 404.631.1990  
[www.dot.ga.gov](http://www.dot.ga.gov)



Scan this code with your  
smart phone QR reader  
for more information about  
Georgia DOT.



Visit us on Facebook  
or Twitter.



Permission is granted to reprint material from Georgia Milepost if credit is given to the publication.

© 2012 ■ Georgia Department of Transportation ■ Office of Communications