



Fiscal Year **2015 Investment and Performance** Report  
*Your Dollars Building A Better Georgia*



## Table of Contents

Message from the Commissioner	<b>1</b>
Transportation Funding Act of 2015 Your Dollars Building a Better Georgia	<b>2</b>
Finance and Funding	<b>4</b>
Winter Weather Update	<b>6</b>
Georgia DOT At-A-Glance	<b>10</b>
Planning	<b>10</b>
Engineering	<b>12</b>
Public Private Partnership/Program Delivery	<b>12</b>
Construction	<b>14</b>
Major Projects Update	<b>15</b>
Maintenance and Operations	<b>16</b>
Intermodal	<b>18</b>
Partnerships and Programs	<b>23</b>
Georgia DOT Performance	<b>27</b>
Honors	<b>32</b>
Contacts	<b>34</b>
State Transportation Board	<b>36</b>
Georgia DOT Districts	<b>38</b>
Attachments	

## Message from the Commissioner



Thank you for taking the time to review the Fiscal Year 2015 Georgia Department of Transportation Investment and Performance Report. This report plays a critical role in informing you of the progress made during the past year and explains the vision for the road ahead while demonstrating our commitment to Georgia's citizens and road users.

Georgia has the 10th largest transportation system serving the 8th largest population in the nation. GDOT's employees work tirelessly to serve the needs of motorists who travel more than 300 million vehicle miles throughout our state each day. We are excited to rise to this challenge and strive for innovation to address today's needs and those of the future.

In the fall of 2014, the Georgia Legislature's Joint Study Committee for Critical Transportation Infrastructure Funding issued a finding that at least an additional \$1 billion annually would be necessary to better maintain our state's existing infrastructure. Governor Deal and the Georgia General Assembly acknowledged the challenges facing Georgia's transportation system and were successful in enacting the Transportation Funding Act of 2015 (TFA 2015) to address current and future needs.

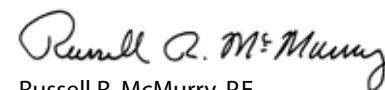
The State Transportation Board and GDOT greatly appreciate the added investment in our system and recognize that with it comes a solemn responsibility to be innovative, transparent and accountable. TFA 2015 provides a sustainable funding mechanism to address critical needs over and above Georgia's federal share. Federal uncertainty had a very real and negative impact on the delivery of transportation projects in FY 2015. Georgia as well as the rest of the states did not receive a full year of federal funding appropriations but three separate short term appropriations. This caused projects to be put on hold and/or delayed. FY 2016 has started in a similar fashion.

Georgians can expect to see more and more orange cones and construction activity as projects to improve our roadways and structures are advanced upon receiving this additional funding. Looking ahead, we are prioritizing our current needs throughout the state. We anticipate a dramatic increase in replacements of aging bridges and pavement conditions will improve as we begin resurfacing more and more roads annually. Lastly, Georgians will see an improvement in the basic quality of our roadway and right-of-way as a result of enhanced routine maintenance activities.

TFA 2015 will further Georgia's economic competitiveness by offering a transportation system for the 21st Century that provides more choices to the traveling public. We will continue to work to create safer roads and increase economic development opportunities statewide. Transportation and economic development go hand in hand in making Georgia one of the greatest states to live, work, or visit.

I want to thank Governor Nathan Deal, the members of the Georgia General Assembly, the State Transportation Board Members, our federal partners and our 4,200 dedicated employees for working together to ensure that we remain one of our nation's leaders in transportation delivery. As you review the 2015 Investment and Performance Report, please feel free to provide us your feedback. Truly, Georgia's best days are ahead for transportation!

Sincerely,



Russell R. McMurry, P.E.  
Commissioner



## Transportation Funding Act of 2015— Your Dollars Building a Better Georgia





With the passing of the Transportation Funding Act of 2015, Georgia DOT was provided funding to address critical transportation needs. The available funding – estimated to be \$830 million to \$1 billion – will address critical infrastructure needs and the backlog of routine and capital maintenance projects that have been deferred. This more dependable state funding is a welcomed revenue source especially at a time


when there is so much uncertainty with federal funding. As of November 30, 2015, Congress had yet to pass a new federal transportation bill. The current bill expired on October 1, 2014.


The influx of State funding will allow the Department to potentially deliver projects at a rate that is both faster and less costly. For example, environmental requirements can be met using the Georgia Environmental Policy Act (GEPA) process rather than the National Environmental Policy Act (NEPA) process. While diligent efforts to protect the environment are conducted in both the GEPA and NEPA processes, studies have found that the GEPA process may require less time and funding. This is primarily due to having reduced oversight and time for federal review as well as the mitigation strategies required by the NEPA process. These much needed revenues will help improve many of Georgia's under-maintained transportation systems from their currently poor condition to fair or better condition.

Georgia's transportation bill provides available funding through multiple sources to maintain a more reliable funding stream. The primary sources for the increased transportation investment include:

 **State Motor Fuel Excise Tax Rate** of 26 cents per gallon on gasoline and 29 cents per gallon on diesel. Annually indexed for increased vehicle fuel efficiency. Additionally, indexed from 2016 to 2018 to include Consumer Price Index increases.

 **Heavy Vehicle Annual Impact Fee** of \$50 for vehicles that weigh 15,500 to 26,000 pounds. For vehicles greater than 26,001 pounds, the fee will be \$100.

 **Hotel/Motel Nightly Fee** of \$5 per night lodging fee (excludes extended stay occupants).

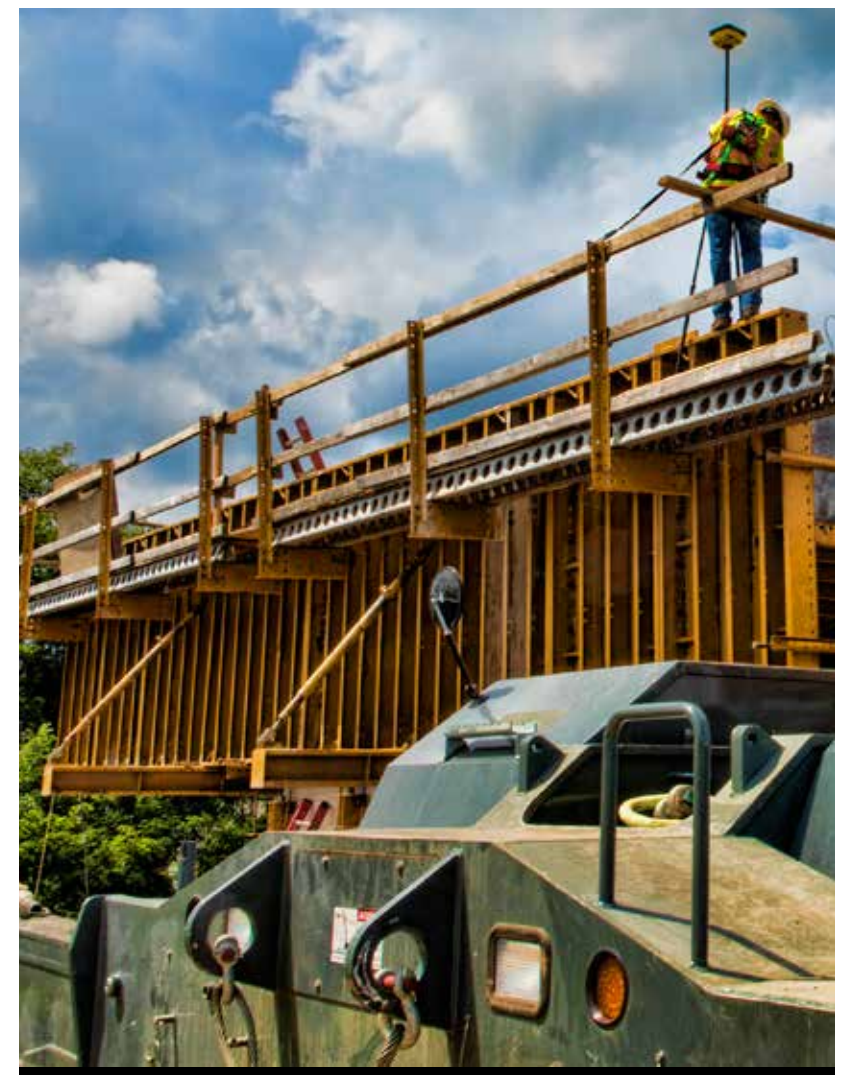
 **Alternative Fuel Vehicle Fees/Tax Credits** of \$200 on non-commercial vehicle alternative fuel annual registration fee and a \$300 fee for commercial vehicles. Additionally, eliminates tax credits on low and zero emission vehicles not dedicated to transportation.

The investment in Georgia's transportation network represents an average addition of \$2.68 per month or \$32.16 per year for an average motorist who drives 12,000 miles per year (with an average fuel economy of 25 miles per gallon). The additional dollars will contribute to maintaining and improving Georgia's network of roads and bridges and will encourage economic growth across our state.

The new transportation funding will be used across several programs to address mounting maintenance and operational needs while allowing flexibility between state and federal funding. Georgia DOT must prioritize the backlog of transportation needs for this additional funding. The primary focus will include the following areas of maintenance and operations:

- Increased routine maintenance (better pothole repair, increased grass mowing, increased litter pick-up, improved striping, etc.)
- Increased resurfacing of state routes and Interstates
- More bridge replacements and improved bridge maintenance
- Increased safety and operational improvement projects
- Increased Local Maintenance and Improvement Grant (LMIG) funds

Additional state funding also gives the Department the ability to apply federal funds to less complex projects.



# Finance and Funding

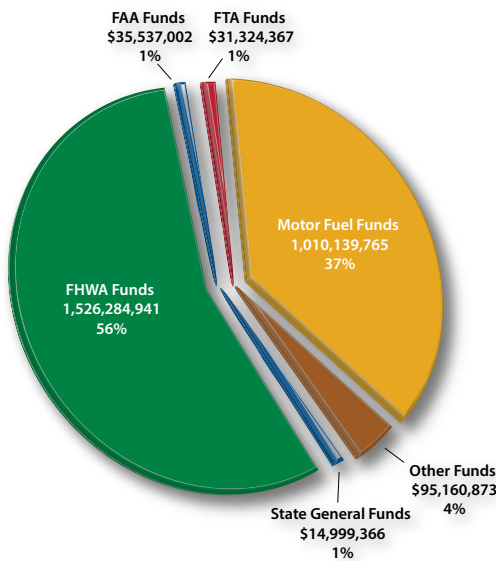
## Funding Resources and Requirements

Georgia DOT's total FY 2015 budget was \$2.7 billion. More than 99% of the funding was derived from motor fuel taxes, federal funds and other sources; less than 1% came from state general funds.

The Department's first funding obligation is to repay the annual debt service. General Obligation (GO) Bonds and Guaranteed Revenue Bonds (GRB) are repaid using state motor fuel funds. Grant Anticipation Revenue Vehicle (GARVEE) Bonds are repaid using both federal obligation funds and state funds. In essence, this means that the overall funds available to spend toward transportation are substantially reduced each year.

Total Budget By Fund Source FY2015

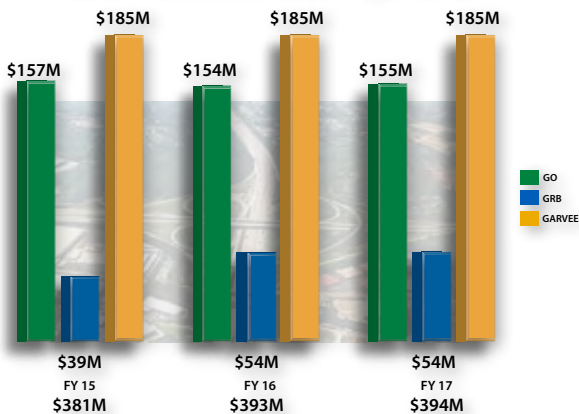
Total Budget: \$2,713,446,314



Federal funding reflects multiple year's obligation authority. The appropriations bill reflects a federal estimate based on annual expenditures.

In FY 2015 \$381M of the \$2.7 billion was allocated to debt service leaving about \$2.3 billion to allocate towards improving Georgia's transportation system.

GDOT Debt Service Payments

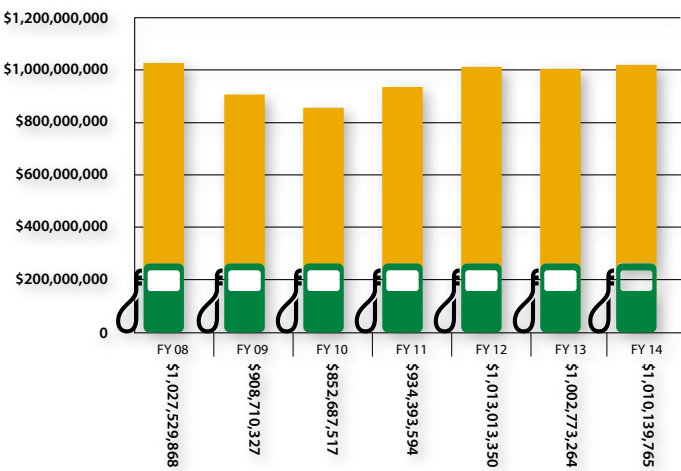


GO Bond Debt Service appropriated directly to GSFIC  
GRB and GARVEE Debt Service appropriated to the GDOT  
Payments to SRTA program

Debt Service information provided by GSFIC and SRTA

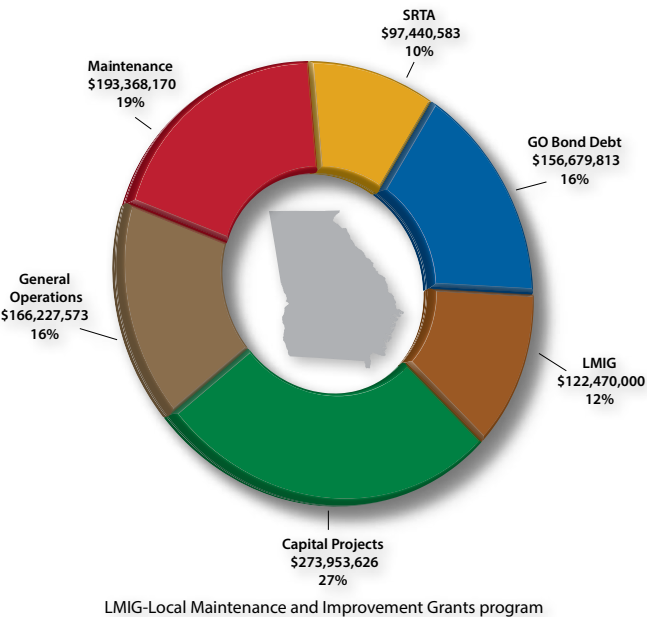
Georgia DOT must also use motor fuel dollars to provide matching funds to the state's FHWA funded projects and to fund the Department's annual general operations budget. Over the years, state motor fuel funds have failed to keep up with Georgia's growing transportation needs.

State Motor Fuel Collections



FY15 Amended State Motor Fuel Budget

Total State Motor Fuel Budget: \$1,010,139,765





## Winter Weather Update

The 2015 winter weather season saw positive changes in the Department's winter weather planning and resource allocation. Following an intense storm season in 2014, Georgia DOT, along with the Governor's Winter Weather Task Force, set out to evaluate the state's inclement weather roadway preparations, response plans, processes and resources. The goal was to assess where the agency performed well and to evaluate areas where the Department could improve.

Approximately \$14.5 million in General Obligation Bonds were appropriated to the Department in the FY 2015 budget to bolster valuable materials and equipment, increase efficiency, and enhance staging throughout the state. Special attention was also given to improving Intelligent Transportation Systems (ITS) and Geographic Intelligent Systems (GIS) during winter weather events.

Georgia DOT's new Winter Weather Response Plan focuses on proactive and preventive efforts and includes strategies learned from research and peer exchanges with other state DOTs. Many initiatives were implemented as a result of this research. Highlights include:

### **Road Weather Information System (RWIS)**

- Roadway sensors were installed in the Metro Atlanta area, Macon and north Georgia that helped to more confidently predict weather conditions on roads, including the ice, temperature, precipitation and wind. Locations and the number of sensors were determined by the Georgia Emergency Management Agency (GEMA) taskforce.
- Additional cameras were added to the Navigator Intelligent Transportation System to assist in monitoring and deploying resources during a weather event.

### **Increased Brine Treatment Program and Snow/ Ice Removal Capacity**

- Additional brine production, storage and spreading equipment
- Increased salt barns
- Increased number of dump trucks and plows

### **Enhanced Intelligent Transportation System and Monitoring**

- Enhanced 511 capacity
- Increased cameras
- Defined towing strategies for emergency situations

### **Enhanced Geographic Transportation System Capabilities**

- Tracked maintenance vehicles during winter weather event
- Enhanced Web Emergency Operating Center (EOC) system for tracking maintenance incidents such as icy roads, fallen trees and impassable roads





### Initiated Multi-Agency Response Teams

Four types of teams were designated to respond to different incident types during a winter storm event:

- Brine distribution units
- Eighteen Interstate Teams with 3-5 tandem dump trucks (trucks with snow plows and material spreaders attached) to treat and remove snow from roadway.
- Special Response Teams to respond to “hot spots” independent of the treatment areas where the Interstate teams focus
- Traffic Strike Teams consisting of personnel from Georgia State Patrol, Motor Carrier Compliance Division, Georgia DOT Highway Emergency Response Operators, Department of Natural Resources, Georgia Forestry Commission and Georgia Department of Defense

### By the Numbers

**9** new material storage locations added for a total of 30 - to allow for quicker, targeted and continuous response where needed.

**3** multi-lane snow plows added for a total of five.

**10** 5,000-gallon tankers to apply brine treatment to the Interstates.

**27** Road Weather Information System (RWIS) roadway sensors including **15** new locations in the metro Atlanta area, **1** in Macon and **11** in north Georgia helped to more confidently predict weather conditions on roads, including the ice, temperature, precipitation and wind.

**4** types of teams designated to respond to different incident types during a winter storm event.

**18** Interstate teams with 3-5 tandem dump trucks .

**40** Special Response teams to respond to “hot spots.”

**401** snow removal equipment units statewide.

**2,041** on-call employees covered 39,919 lane miles.

**40,120** tons of salt available statewide.

**44,029** tons of gravel available statewide.





## Georgia DOT At-A-Glance

### Planning

The Division of Planning is responsible for the statewide transportation planning process for the State of Georgia. By working with other agency offices and divisions, Federal Highway Administration (FHWA), Metropolitan Planning Organizations (MPOs) and local governments, this division develops the Statewide Transportation Plan (SWTP)/ Statewide Strategic Transportation Plan (SSTP) and State Transportation Improvement Program (STIP).

In FY 2015, the Planning Division provided oversight and guidance for the development of several studies conducted to gain innovative and relevant insight to solve complex transportation challenges. Noteworthy studies include:



Metro Atlanta has a well-established network of interstates and limited-access facilities. However, many of these facilities experience traffic congestion during peak travel periods. In some instances, this congestion is due to recurring bottlenecks; other times, congestion is incident-related. This study seeks to improve the existing transportation system.

The Operational Planning Study (OPS) provided an operational assessment of the interstate and limited-access system in the metro Atlanta region. The OPS recommended many operational projects that could mitigate transportation bottlenecks throughout metro Atlanta. The study recommended easily implementable projects that required minimal engineering, right-of-way or environmental consideration. These projects could be implemented within a relatively short six months to five year timeframe, and be low cost solutions.

A spreadsheet-based project prioritization tool was developed to evaluate and rank the projects. The study recommended 74 projects consisting of 12 different project types in 65 different locations. The project types range from adding ramp meters to redesigning interchanges.

In 2015 the OPS won the national "Transportation Planning Council Best Project Award" from the Institute of Transportation Engineers (ITE). It was noted that the project was "particularly impressive in its closeness and collaboration of planning and transportation engineers."



The Atlanta Regional Managed Lanes Implementation Plan (MLIP) evaluated managed lane options in the Atlanta area. This study serves as an update to GDOT's **2010 Managed Lane System Plan (MLSP)**, which was the first comprehensive system-wide evaluation of urban area managed lanes in the United States.

The MLIP study updated the financial plan for the previous MLSP's list of managed lane projects to reflect current funding constraints along with reducing the reliance on long-term toll concessions. The MLIP evaluated concepts that relied on maximizing existing infrastructure including new lanes, shoulder lanes, reversible lanes and movable barriers

The MLIP incorporated the federal (MAP-21), state (Governor's Strategic Goals), and regional (ARC Plan2040 and GDOT's MLSP) goals. Both qualitative and quantitative evaluation criteria were established to evaluate potential projects.

### Interstate Risk Assessment Study

The overall goal of the Interstate Risk Assessment Study was to enhance how Georgia DOT makes decisions regarding the preservation of the Interstate Highway System. Towards this end, the Interstate Preservation Plan was developed which combines asset management techniques with risk management concepts.

The Plan presents a risk profile for the interstate system coupled with guidance on funding allocations and preservation strategies to assist Georgia DOT in getting the greatest value out of limited preservation dollars and reducing risks to the interstates and Georgia's travelers.

Engineering

The Division of Engineering is responsible for bridge and roadway design, environmental clearance and acquisition of right of way for improvements along Georgia’s transportation system. Consisting of five offices, this division delivered 88 sets of final right of way and roadway design plans, 56 sets of final bridge design plans; purchased 1543 parcels; and environmentally cleared 656 projects to progress to the next phase. The offices of Roadway Design, District Design and Bridge Design delivered construction plan sets totaling more than \$208 million in construction fund authorizations in FY 2015.

Public Private Partnership (P3)/Program Delivery

The Division of P3/Program Delivery is responsible for delivering the Department’s Construction Work Program (CWP). The division develops, facilitates, and supports the implementation of projects utilizing public private partnership, in addition to traditional project delivery methods. The division’s primary focus is on delivering projects on schedule, and within scope and budget. This objective is accomplished through a collective effort lead by the project manager with various intra-office engagement.

Fiscal Year 2015 Letting Summary

Let By	No. Of Projects	Amount
GDOT	146	\$732.9M
Local	7	\$49.7M
Total	153	\$782.6M

Projects of note include:

I-285 at SR 400 Interchange

The Georgia Department of Transportation (GDOT) and State Road and Tollway Authority (SRTA) are implementing the I-285 & SR 400 Reconstruction Project through a Public-Private Partnership (P3) initiative to address the needs to reduce congestion and improve mobility and access. The total value of the project is \$1.06 billion which includes Design Build-Financing. It is expected that the project will be constructed within a little more than four years with the developer providing approximately 60% of the initial construction funding. Payback for construction and financing will occur over a 10-year period.

The project consists of the reconstruction of the I-285 at SR 400 Interchange and the addition of SR 400 Collector-Distributor (CD) lanes. The two projects are being combined into a single procurement and construction project to achieve maximum efficiency, economic benefit and cost-effectiveness. The project entered the Preliminary Engineering and Right-of-Way acquisition phases during this fiscal year and is expected to be complete in June of 2020.

Weigh-in-Motion

The Weigh-in-Motion (WIM) Project, estimated at \$25 million, includes the design, development, construction and integration of mainline WIM scales at all 19 weigh station locations within the state of Georgia. Web-based software will provide virtual weigh station functionality for each of the scales. Once the project is operational, each mainline WIM scale will weigh every truck in its corridor, including PrePass and Drivewyze registered trucks. All collected information will be stored in a database to be disseminated to numerous stakeholders. This data will assist Georgia DOT with traffic monitoring, traffic volume and speed data collection, and monthly reporting to Federal Highway Administration (FHWA).

The Design-Build Team will maintain and upgrade any components necessary to keep the system operational during the construction period plus the five-year maintenance period thereafter. The project is managed by GDOT Innovative Delivery with GDOT Traffic Operations as a primary project funder. Currently under construction, the project will be complete in March of 2017.

I-95 at SR 21 Diverging Diamond Interchange

This interchange reconstruction project, located in Chatham County approximately four miles northwest of Port Wentworth and 10 miles northwest of Savannah, consists of operational improvements to the interchange of SR 21 at I-95. The project is valued at \$6.4 million. The existing full-diamond interchange will be converted to a diverging diamond interchange (DDI) which will utilize the existing roadway underneath the I-95 Bridge, while providing operational improvements to SR 21. The DDI project is currently under construction with a completion date of January 2017.

Grange Road Widening from SR 21 to East of SR 25

The Grange Road Widening project entails 1.5 miles of widening and reconstruction on Grange Rd (CS 650) beginning at SR 21 and extending east of SR 25 to the Port of Savannah terminal facilities. The project was Let in June of 2015 and is currently under construction. The cost of the project is just under \$10.8 million.

Grange Road is located in the City of Port Wentworth and was designated as an Intermodal Connector on the National Highway System (NHS). This port terminal project was identified by the Georgia Ports Authority as one of their “Last Mile” projects, as is the Jimmy DeLoach Connector project, which is under construction. The Connector will provide a new interchange with Grange Road and will provide improved access to I-95.



### Construction

The offices within the Construction Division are responsible for review and approval of contract modifications, communication with the construction industry, project field inspections and on-time/on-budget completion of roadway projects. From July 1, 2014 to June 30, 2015, Georgia DOT opened to traffic 43 projects totaling slightly more than \$212 million. A sampling of projects include:

Congressional District	County	Project Description	Project Cost	Date Opened to Traffic
1	Glynn	Interchange reconstruction on I-95/State Route 405 at State Route 99, including construction of a bridge and approaches over I-95.	\$11,000,000	4-22-2015
2	Muscogee	Construction of the Columbus RiverWalk between 13th Street and 14th Street.	\$614,000	1-15-2015
3	Spalding	Widening and reconstruction on US19/SR3/US341 for additional lanes including construction of a bridge and approaches over Norfolk Southern Railroad.	\$12,700,000	9-11-2014
4	Newton	Widening and reconstruction on State Route 81 beginning at Bethany Road/County Road 8 and exit north of Cowan Road/County Road 25.	\$1,800,000	4-30-2015
6	Fulton	Construction of a roundabout on State Route 372/ Birmingham Highway at Providence Road.	\$2,400,000	4-15-2015
7	Forsyth	Intersection Improvements on State Route 141/ Bethelview at State Route 9.	\$5,000,000	8-1-2014
8	Colquitt Tift	Safety improvements on State Route 35/US319 from south of CR364/Seminole Drive in Colquitt County to State Route 520/US 82 in Tift County.	\$17,100,000	2-7-2015
9	Hall	Widening and reconstruction on State Route 347 beginning east of I-985/SR419 and extending west of McEver Road to include the reconstruction of a bridge over a Norfolk Southern Railroad.	\$13,000,000	9-25-2014
10	Newton	Bridge rehabilitation on I-20/SR 402 over the Alcovy River and Alcovy River Overflow.	\$6,700,000	9-24-2014
12	Richmond	Widening and reconstruction on I-520/State Route 415 beginning at US1/State Route 4 and extending to State Route 10/Gordon Highway. The project also included the construction of two bridges on I-520 over SR4/ Deans Bridge Road.	\$33,000,000	12-19-2014
13	Fulton	Construction of a roundabout on SR70/SR154/Cascade-Palmetto Highway at Ridge Road and at Cedar Grove Road.	\$3,200,000	9-20-2014

### Major Projects Update

Georgia DOT has several Major projects underway that will significantly improve the traveling experience of Georgians and those moving through the state. The following highlight the progress of these important projects during the 2015 fiscal year.

#### I-75 South Managed Lanes

To address traffic congestion, the I-75 Express Lanes project adds two toll lanes along I-75 south of Atlanta. The project corridor extends 12 miles, from SR 155 /McDonough Road to SR 138 / Stockbridge Hwy and is valued at \$176 million. Once the final design for roadway widening, bridge construction and new Toll/ITS infrastructure and other engineering activities were completed, the groundbreaking ceremony for construction took place in October 2014. It is anticipated that the project will be 90% complete by December 2016.

These new reversible lanes are being built within the median of the existing roadways. They will be open to northbound traffic in the morning peak period and to southbound traffic during midday and evening periods. The managed lanes are scheduled to open to traffic in spring of 2017.

#### The Northwest Corridor

The Northwest Corridor Express Lanes project adds 29.7 miles of reversible toll lanes along I-75 from Akers Mill Road to Hickory Grove Road and along I-575 from I-75 to Sixes Road in Cobb and Cherokee counties. This corridor is currently one of the most congested areas of traffic for the entire metro Atlanta region. The project costs \$834 million and new lanes will be built to the west of the existing lanes along I-75 from I-285 to I-575.

To date, the overall project is approximately 40% complete. Construction activities underway include: 17 of 39 bridges and 17 of 61 walls. Approximately five miles of new managed lane paving began in the median area on I-575. The Express Lanes are on schedule to open in the summer of 2018.



#### I-85 Express Lanes Extension

This project includes the addition of 10 miles of newly constructed toll lanes north of the existing I-85 Express Lanes at a cost of \$149 million. Located entirely within Gwinnett County, one northbound and one southbound toll lane will extend from Old Peachtree Road to Hamilton Mill Road. These lanes are designed to improve traffic flow, increase options for motorists, transit and registered vanpool customers, provide reliable trip times, create jobs, and bring economic benefits to the residents of the region.

The project was awarded and shortly thereafter, preliminary design began that included new environmental studies, bridge design and geotechnical design. Construction is expected to start in summer of 2016 and continue through summer of 2018.

### SR 400 Widening

At a cost of \$46.5 million, the project will widen one inside lane along SR 400 in both northbound and southbound directions. The project will begin at McFarland Parkway and extend north to SR 369 in Forsyth County. It will also include widening the bridge over Big Creek and Lake Lanier. The entire widening of SR 400 will occur within the existing median. The remaining median will include installation of barrier protection measures including single and double faced guardrail.

The project is the first in Georgia to use a fixed-price, variable-scope approach to result in quicker delivery. A portion of project funding is provided as a part of the Forsyth County transportation bond referendum approved by voters on November 4, 2014. One year later, a groundbreaking ceremony was held. Work was begun on concrete rehabilitation and new concrete paving will begin in spring 2016. Two bridge demolitions were also started at Big Creek. Construction is expected to be completed in June of 2018.

### Jimmy DeLoach Parkway

The \$72.8 million, 3.1-mile DeLoach Connector will extend the current DeLoach Parkway to State Route 307/Bourne Avenue near the Port of Savannah's main gate. Once completed, the estimated 8,000 trucks using this roadway daily will have a limited-access, four-lane route directly to and from the port and Interstate Highway 95. The project is being built in collaboration between the Georgia Ports Authority and Georgia DOT. Construction is currently 92% complete and included all earthwork, six bridges and concrete paving throughout the corridor. Work is scheduled to be completed in May 2016.

### Maintenance and Operations

Georgia DOT maintains a State Highway System of approximately 17,967 centerline miles; 48,334 lane miles of roadway; and 6,671 bridges. In FY 2015, nearly \$15.8 million was authorized in major Interstate Maintenance resurfacing projects on I-16 and I-20. This rehabilitation work will improve riding surfaces for Georgians, freight and those traveling through our state. The work will also extend the life of Interstate pavements.

With safety being the Department's highest priority, restriping projects enhance roadway safety through improved visibility. In addition to resurfacing, an additional \$2.3 million was authorized on restriping projects.



To address the challenge of a continuous decrease in both funding and resources, Comprehensive Routine Maintenance is a tool used by the Department that assigns routine maintenance activities along a corridor to a single contractor. Activities include mowing, litter pick-up and other pertinent maintenance functions needed to keep state highways in proper and safe operating condition. This tool is a strategic use of GDOT and contractor staffing to help minimize cost and maximize quality, expertise and efficiency. The comprehensive routine maintenance of the complete I-95 Georgia corridor has proven to be a successful maintenance tool. Almost \$3 million was allocated towards this effort. In addition, contracts have been executed for routine maintenance along major state routes such as SR 2 in Catoosa/Walker County, SR 3 and SR 3 Connector in Whitfield County.

### Signal Systems and Software

Georgia DOT has procured and is in the process of deploying new software to operate all of the State's traffic signals – including signals on local roads. The software will significantly increase the tools and capabilities of our engineers to better operate our traffic signals. The system is built on an open platform, which allows innovation for future technology that becomes available.

One of the major benefits from this new technology is providing real-time and historical operational performance metrics of traffic signals. By using data collected in the field by the software, GDOT traffic engineers can better respond to signal timing issues and implement improvements immediately. This proactive response to operational issues significantly improves signal operations on our busiest corridors while also providing transparency to the public on how well the system performs. Active management of signal systems at all times – from incidents, special events, or just a normal commute – provides a more effective tool for travel reliability on our busiest arterials.

The deployment of this software kicked-off in the summer of 2015, and is scheduled to be fully deployed on GDOT-maintained signals across the state by fall 2016. GDOT is also providing this system to local agencies at no cost, with statewide deployment expected to be complete by late 2017.



### Traffic Management Center (TMC) Renovation

The main Operations Floor at the TMC underwent a major renovation in preparation for the opening of two Express Lane projects on I-75 in FY2015. Due to the close coordination required between GDOT and the State Road and Toll Authority (SRTA), it was advantageous to move the SRTA Toll Operations Center (TOC) to the TMC. To accommodate the additional staff, the TMC operations



floor was expanded from 1,500 square feet to just over 3,000 square feet by removing some of the offices surrounding the floor and revamping the overall floor plan. The number of operator workstations were increased from 19 to 36, and arranged in “pods” according to work function. The renovation was completed November 2015.

### Intermodal

#### Aviation

The Aviation Program has the responsibility of assuring that the 104 publicly-owned airports in Georgia are safe, adequate, and well maintained. Currently, there are 4,600 general aviation-based aircraft at Georgia Airports. Georgia is one of 10 states that belong to the Federal Aviation Administration’s State Block Grant Program (SBGP). Through the SBGP, the Department assumes the responsibility for administering the FAA’s Airport Improvement Program (AIP) grants to Georgia’s 96 general aviation airports.

In FY 2015, the Aviation Program administered \$48,417,833 in Federal, State and Local funding to implement design, plan, complete the environmental process, acquire land, install navigational aids and build capital construction projects. Notable projects include:

- Cobb County International Airport-McCollum Field: completion of the new air traffic control tower
- Runway extensions in Hinesville, Sylvania and Tifton
- New taxiways in Atlanta-Newnan and Canton
- Completion of five Wildlife Hazard Assessments at DeKalb-Peachtree, Cobb County, Fulton County, Lawrenceville and Peachtree City Airports



Cobb County – New Air Traffic Control Tower – Cost: \$2,900,000

#### Rail

When it comes to Freight Rail, Georgia boasts one of the most extensive Freight Rail systems in the U.S., with 1,410 shortline miles of track that run through most of the state’s 159 counties. Completed projects of note in FY 2015 include:

#### Chattooga and Chickamauga Railway – New Spur to Audia Plant

The Georgia Department of Transportation is working with Walker County Development Authority to build a railroad spur that would connect the Chattooga and Chickamauga Railway to the new Audia International Plant. The plastic manufacturing plant, located in Lafayette off U.S. Highway 27, will initially bring about 150 jobs to the area and could double with time. The project cost so far is approximately \$1 million.



Rail spur line under construction (June 2015)



Audia plant under construction (June 2015)

#### Georgia Southwestern Railroad – New Spur to Peanut Plant in City of Dawson

Georgia DOT has also completed 4,700-feet of new siding track that will improve operational efficiency and connect to the Georgia Southwestern Railroad (GSR). The Department has spent approximately \$900,000 to construct this new track. The work is expected to contribute to the community by helping to expand local plant operation.



Transit Programs

The Governor has designated the Georgia Department of Transportation as the agency responsible for administering the Federal Transit Administration (FTA) section programs. GDOT’s Office of Intermodal Programs is responsible for administering the state’s transit capital assistance program carrying out FTA reporting requirements; and monitoring FTA compliance of its sub-recipients.

FY15 Urban Program Investment Report

Funding Program	Total Project	Federal	State	Local
5307	\$ 25,450,999.00	\$ 15,514,949.00	\$ 685,287.00	\$ 9,250,763.00
5309	\$ 711,145.00	\$ 568,916.00	\$ -	\$ 142,229.00
5316	\$ 7,352,319.00	\$ 4,544,091.00	\$ 291,032.00	\$ 2,517,196.00
5317	\$ 8,357,377.00	\$ 4,544,191.00	\$ 107,497.00	\$ 3,705,689.00
MPOs (5303)	\$ 3,392,575.00	\$ 2,714,060.00	\$ 339,257.00	\$ 339,258.00
TOTAL GDOT Managed-Urban Funds	\$ 45,264,415.00	\$ 27,886,207.00	\$ 1,423,073.00	\$ 15,955,135.00
Statewide Large Urban	Total Project	Federal	State	Local
	\$ 151,456,342.00	\$ 126,213,619.00	\$ -	\$ 25,242,723.00
Total Statewide	\$ 196,720,757.00	\$ 154,099,826.00	\$ 1,423,073.00	\$ 41,197,858.00

Rural Transit Program

Georgia’s rural transit program provides demand response transit service to rural communities across the state through federal, state and local funding. The following outlines service and asset data for the program.

**Service Data**

Total Number of Passenger Trips  
**1,839,206**

Total Annual Vehicle Miles  
**16,943,251**

Total Annual Vehicle Hours  
**968,478**



**Vehicle Data**

Transit Vehicles  
**497**

ADA Accessible  
**74%**

Non-ADA Accessible  
**26%**



Waterways

The Georgia DOT Waterways Program partners with the U.S. Army Corps of Engineers to maintain the navigability of the Atlantic Intracoastal Waterway (AIWW) and Georgia’s deep water ports in Savannah and Brunswick. These port facilities are operated by the Georgia Ports Authority (GPA). Currently one of the biggest waterways projects in history – the Savannah Harbor Expansion Project (SHEP) – is underway and GDOT is working diligently with our partners to prepare the harbor for the bigger ships.

Fiscal Year 2015 saw more significant milestones associated with the Savannah Harbor Expansion Project than in the previous 15 years. On October 8, 2014 the Project Partnership Agreement (PPA) was signed between the U.S. Army Corps of Engineers, the Georgia Ports Authority and the Georgia Department of Transportation. This allowed for construction to proceed using the non-Federal Sponsor share of the funding.



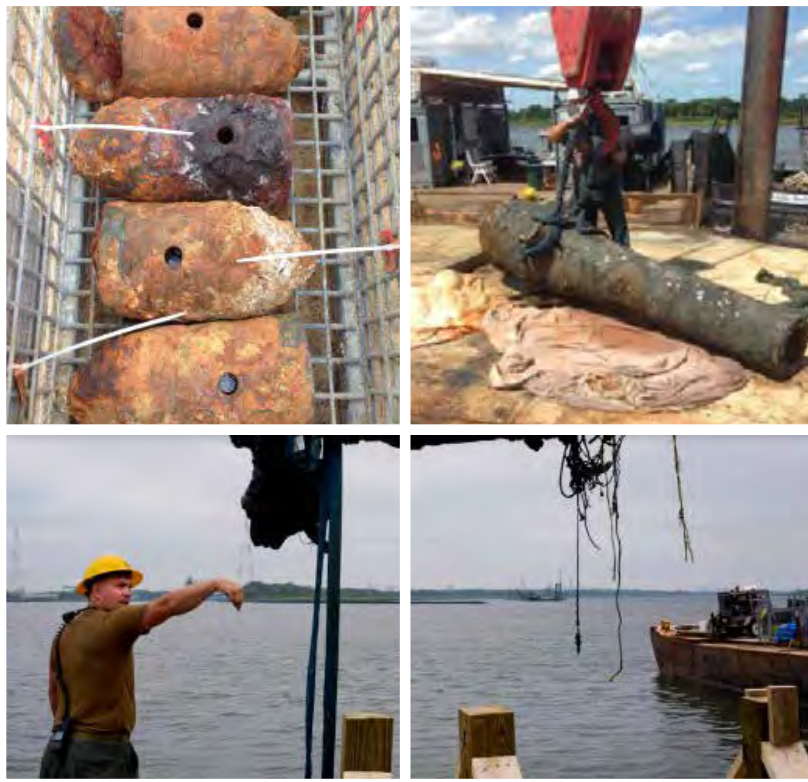


As the non-Federal Sponsor, GDOT is responsible for providing all lands, easements and rights of way for the different features of SHEP. Acquisition is complete on all properties required for the Dissolved Oxygen Injection System, the Raw Water Storage Impoundment, the Sloughing Easements and the Channel Wideners. In addition, 733 acres of the required 2,245 acres of Mitigation Properties have been acquired. These properties will be turned over to the U.S. Fish and Wildlife Services for incorporation into the Savannah National Wildlife Refuge. Property surveys are also complete for all properties required for the New Savannah Bluff Lock and Dam Fish Bypass.

A ceremony was held on January 29, 2015 to kick-off the first official construction feature of SHEP, the Raising of the CSS Georgia.

### The Raising of the CSS Georgia

Divers have recovered many artifacts including 6 cannons, and 133 pieces of unexploded ordnance (artillery shells and cannonballs).



Other significant milestones for SHEP include:

- The award of the Entrance Channel Dredging to Great Lakes Dredge and Dock Co. for \$134M
- The award of the Dissolved Oxygen Injection System to CDM Constructors for \$99.6M.
- The advertisement of the Raw Water Storage Impoundment.
- The beginning of design of the Area 14A Dike Raising and Design of the Sediment Basin Feature

## Partnerships and Programs

### Transportation Investment Act (TIA)

**TIA** In 2012, voters in three middle-Georgia regions - River Valley, Central Savannah River Area (CSRA) and the Heart of Georgia Altamaha (HOGA) - approved a 10-year one percent sales tax to fund regional and local transportation improvements. Over a decade, a projected \$1.5 billion in new revenue is expected to be generated and dedicated to transportation improvements in these regions. Of the total revenue collected in each region, 75% is used for construction of these projects. The remaining 25% is disbursed monthly to the regions' governments for discretionary use on local transportation-related efforts.

Prior to the vote, regional commission roundtables of local elected officials, with significant public input, selected projects for each region's Approved Investment List. There are a total of 871 projects on the approved lists, divided into three delivery bands: Band 1— 2013 to 2015, Band 2— 2016 to 2019 and Band 3— 2020 to 2022. Additionally, TIA guidelines dictate that all projects must enter the construction phase by December 31 of the last year of their assigned band. At the end of 2015, TIA management met this objective by ensuring that all 263 projects in Band 1 had entered the construction phase.

The TIA projects in Band 1 have been diverse in scope and reflect the unique needs of each region – positively impacting not only the transportation infrastructure in these areas, but also the quality of everyday life.

### Heart of Georgia Altamaha

In the HOGA region, \$66,175,134 in TIA funds was committed for 211 Band 1 projects, 139 of which were completed. In the first three years of the program, TIA projects resurfaced 154 miles of roadway in the region, and started the process of rehabilitating or replacing seven bridges, as illustrated in the projects featured below:

**Springhaven Bridge in Laurens County:** This 65 year old bridge, which lacked guardrails since its inception, was replaced with a budget of only \$162,500 and finished in less than four months - upholding TIA's commitment to complete projects on-time and within budget. Local officials lauded the speed at which the bridge was replaced, the minimal impact on drivers through the construction phase, and how much the project has improved the commute for the 1,200 West Laurens High School students that cross the bridge each day.



**Adams Street (SR 130) in Toombs County:** This \$1.6 million project has provided a solution to the long-standing drainage and accessibility issues that have plagued Adams Street in the City of Vidalia. In addition to resurfacing, the project also included extensive work on the water, sewer and stormwater drainage infrastructure along the corridor. The sidewalks along this road were also upgraded to bring them into compliance with the current ADA guidelines. While these improvements have been needed for years, the project finally moved forward with the help of TIA funds.

**SR 169 Widening and Railroad Overpass in Wayne County:** These combined projects, totaling \$16,956,556, consist of the construction of a bridge over Norfolk Southern Railroad on new alignment and improvements to SR 169 along the intersection at Sunset Boulevard. The new overpass will allow traffic to move through the area unimpeded by trains that block the intersection for lengthy periods throughout the day. The project is also expected to improve the flow of traffic for trucks traveling to and from Georgia Ports, and decrease response time for emergency personnel.

#### River Valley

In Band 1, the River Valley region began construction on eight projects, using a total of \$91,310,312 in TIA funding. From a multi-use trail designed to encourage pedestrian and bicycle transportation to a \$20 million interchange reconstruction, the River Valley region proves that no project is too big or too small for TIA:

**South Lumpkin Multi-Use Trail in Columbus - Muscogee County:** This \$3.5 million project makes use of an abandoned rail corridor between South Lumpkin Park and Old Cusseta Road, transforming the space into a linear park. Once the project is completed in 2016, it will provide pedestrian and bicycle connectivity for a variety of destinations, including seven schools, parks, restaurants, shopping centers and numerous places of historical interest. The park will eventually connect to the Columbus Riverwalk, another TIA project, and become a key portion of the city's Rails to Trails multiuse trail network.

**US 27/Custer Road Interchange Reconstruction in Columbus - Muscogee County:** Utilizing \$20 million in TIA funds, this project will benefit the traveling public by alleviating the congestion at the main entrance to Fort Benning by providing additional access to the largest activity center in Muscogee County. Public access to this property is currently restricted by the U.S. Army for security reasons. The project will reconstruct the existing interchange to accommodate future growth of Fort Benning and provide permanent public access to a proposed development that will not interfere with base security.



**SR 1/US 27 Widening in Randolph County:** TIA has funded this \$32 million project that consists of the widening of SR 1/US 27 from an existing two lane road to a four lane facility with a 44-foot grassed median beginning at Carnegie Vilulah Road and ending at the Cuthbert Bypass. The total project length is 9.1 miles. Construction is expected to be completed by early summer of 2016.

#### Central Savannah River Area

In the CSRA region, eight Band 1 projects are complete and an additional 41 entered the construction phase by the end of FY 2015, for a total project value of \$144,302,746. The projects below illustrate the diversity of TIA projects and how well a tax-payer funded initiative can be tailored to suit the needs of any region:

**Daniel Field Hangar Door Restoration in Richmond County:** Utilizing \$1 million in TIA funds, with the local government covering the costs of planning and engineering, TIA funds were used to restore twenty pre-World War II manufactured hangar doors at Daniel Field in Augusta. The newly renovated doors have provided safety and operational improvements to the Bulk and Maintenance Hangar, and preserved the historical integrity of the doors by using the original frames



**Berckmans Road in Richmond County:** This TIA project began ahead of schedule, and by May 2016, will be transformed into a three-lane road with multi-use trail, sidewalks and a tunnel for bikes and pedestrians. The \$16.7 million project realigns Berckmans Road at Washington Road and Alexander Drive to complete a continuous connection between Washington Road and Riverwatch Parkway and creating a north-south artery to South Augusta. A \$3.7 million sister project will also replace an aging bridge over Rae's Creek.



Tax Revenue Collected as of  
June 30, 2015: \$340,553,985  
Projects Completed as of  
June 30, 2015: 147 of 871





**Local Maintenance and Improvement Grant (LMIG) Program**

There are approximately 125,000 centerline miles of federal, state and local roads in Georgia which carry our commuters from their homes to employment centers and support our thriving industry and interstate commerce. Approximately 108,000 centerline miles of this road network consist of county roads and city streets which fall under the responsibility of 159 counties and 531 cities in Georgia.

The Local Maintenance and Improvement Grant Program provides a mechanism to administer state motor fuel tax funds to local governments to help with improvements to their local road systems. The Georgia DOT Local Grants Office distributes LMIG funds to local governments much faster and provides a greater amount of flexibility to locals in managing their programs. Types of projects funded through LMIG include patching and resurfacing, new location roadways, turn lanes, safety upgrades, and others. Following the review and approval of 544 applications and project lists for the FY 2015 LMIG program, \$117 million in funds were distributed.

Georgia DOT also uses a small amount of the annual allocation each year to assist local governments with possible Economic Development opportunities, emergency situations, and school access in their communities. In FY 2015, LMIG funds were efficiently dispensed for 33 of these types of projects totaling more than \$6 million. A notable project is:

**Bryan County Roundabout**

The Bryan County Roundabout was installed to improve the intersection of SR 144 and Belfast River Road by making it more efficient and safe. Additionally, the roundabout is an enhancement to the new athletic complex being developed by Bryan County adjacent to the intersection of SR 144 and Belfast River Road.



**GEORGIA DOT PERFORMANCE DASHBOARD**

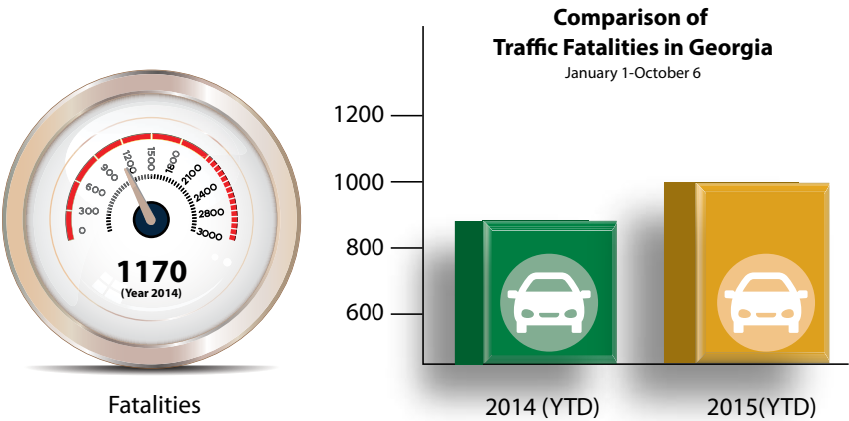
The mission, vision and goals for the Department relate to and support the State's strategic priorities. The Department has established agency performance measures to help evaluate progress, guide decisions and achieve the ultimate goal of providing Georgians with the best possible transportation system. The following details Georgia DOT's performance in its agency goal areas.

**Safety Investments and Improvements**

**Fatalities**

Georgia DOT considers safety in every stage of a project and in every investment decision. The American Association of State Highway and Transportation Officials (AASHTO) has adopted a national goal of reducing fatalities by 1000 each year. To assist in achieving this national goal, Georgia has set a target of reducing fatalities by 41 or more each year. This goal is based on roadway types as well as the number of cars and trucks using the roadway system. This measure evaluates GDOT's efforts to reduce fatalities on Georgia's roads.

While GDOT has made significant strides over the past five calendar years by reducing fatalities from 1299 in 2009 to 1170 in 2014, during the period between calendar years 2013 and 2014, fatalities were only reduced by 19.



In response to the recent increase in fatalities, a partnership between GDOT, the Governor's Office of Highway Safety (GOHS) and the Georgia Department of Public Safety (DPS), resulted in the Drive Alert Arrive Alive campaign. The goal of this statewide safety campaign is to educate drivers about how making simple changes in their driving behavior can prevent crashes and save lives.



Average HERO Response Time

A roadway incident can delay traffic and present a hazard to travelers. By clearing a blocked lane one minute sooner, we could save our traveling public four to six minutes of delay. This measure tracks the time it takes a HERO unit to reach the scene from the time of notification.

GDOT is exploring options to add additional HEROs to corridors with the highest incident rates. In addition, the new Automated Location and Dispatch System (ALADS) allows operators at the Traffic Management Center (TMC) to see the HEROs exact locations on a map. This helps ensure that the closest HERO is dispatched to an incident; thereby further reducing response times. The average response time for FY 2015 was 11 minutes, which is down from 13 minutes in FY 2014.

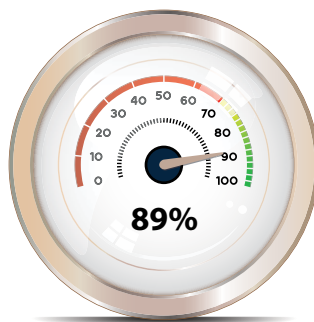


Average HERO Response Time

Taking Care of What We Have

Bridges

The goal of GDOT’s bridge maintenance program is to maintain state-owned bridges so that 85 percent meet or exceed the Georgia DOT standard. The department makes every effort to assure the safety of Georgia’s citizens. GDOT will continue to explore ways to maintain or improve the maintenance of our state-owned bridges. Currently, GDOT is meeting the goal by maintaining an average of 89 percent of bridges that meet or exceed the GDOT standard.



Bridges

Interstates and non-Interstates

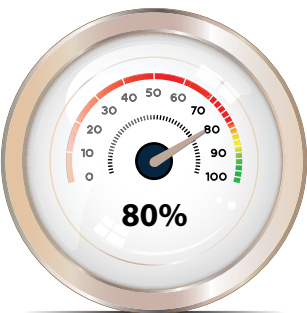
GDOT’s goal is to maintain Georgia’s Interstates so that 90 percent or more are in fair or better condition. “Fair” condition for Interstates is defined as an average COPACES (Computerized Pavement Condition Evaluation System) rating of 75 to 80. The COPACES rating evaluates rutting, cracks and other surface deficiencies on a scale of 1 to 100.

At the end of FY 2015, GDOT maintained 80 percent of Georgia’s Interstates in fair or better condition. This is up from 75 percent in FY 2014.

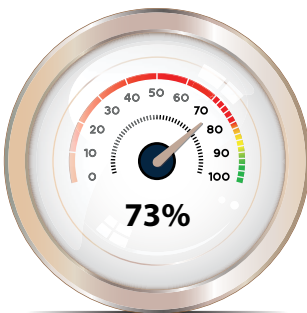
The goal for Georgia’s non-Interstate roads is to maintain them so that 90 percent or more are in fair or better condition. “Fair” condition for non-Interstate roads is defined as an average COPACES (Computerized Pavement Condition Evaluation System) rating of 70 to 80.

In FY 2015, GDOT maintained its non-Interstate pavements so that 73 percent were in fair or better condition. This average is similar to the 71 percent which was achieved in FY 2014.

In the coming years, GDOT will use a portion of its additional resources to focus on Routine Maintenance and Asset Management efforts that previously could not be addressed. GDOT is consistently exploring asset management principles and procedures that will help to cost effectively maintain its Interstate and non-Interstate system.



Interstates



non-Interstates



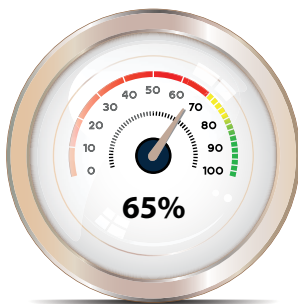
On-Schedule and On-Budget Construction

Each contract executed to build a project includes an agreed upon time frame between Georgia DOT and the contractor to complete construction. However, sometimes necessary extensions occur. This measure tracks how well GDOT is constructing projects within the agreed upon contract time. GDOT’s goal is to complete the construction of 80 percent or more of all projects within the agreed upon contract time.

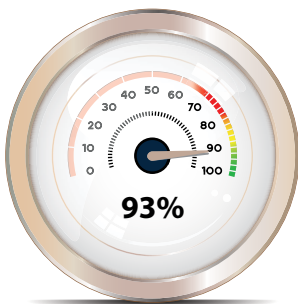
GDOT fell short of its FY 2015 target by completing 65 percent of projects on time. GDOT will continue to explore ways to improve coordination with existing utilities; communication with our contractors and the quality of plans to meet the target in this area.

Each contract executed to build a project includes a dollar amount agreed upon between GDOT and the contractor to complete construction. However, sometimes projects are completed over or under the award amount. This measure tracks how well GDOT is constructing projects within the agreed upon dollar amount.

GDOT’s goal is to complete the construction of 90 percent of all projects within 10 percent of their budgeted award amount. In FY 2015, GDOT performed very well in this area, scoring just under 93 percent. We will continue to make improvements to project cost estimates and to monitor construction overruns to continue the upward trend.

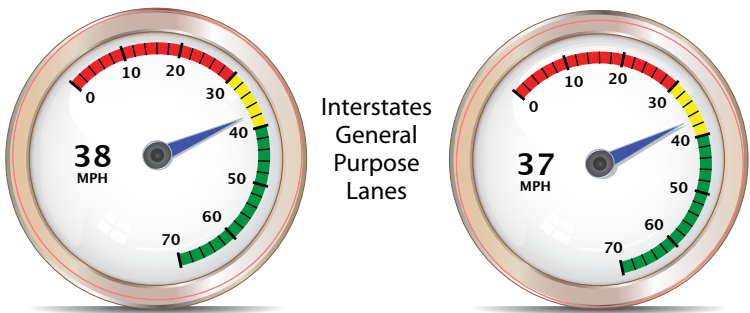


On-Schedule



On-Budget

Highway Peak Hour Speeds



Congestion in Metro Atlanta causes Interstate travelers to anticipate delays and allow for additional time when traveling during peak morning hours (6 a.m. – 10 a.m.) and peak evening hours (3 p.m. – 7 p.m.). The goal is to reduce congestion so that a 30 minute trip during non-peak traveling hours would take no more than 40 minutes during peak hours. Likewise, a speed of 55 mph during non-peak hours would be reduced to 40 mph during peak hours.

This measure tracks average speeds across the most congested freeways in the Metro Atlanta region. By focusing on these key roadways, GDOT can identify and address the biggest challenges to congestion in our region.

GDOT’s goal is to optimize the throughput of people and goods on roadways throughout the day. GDOT has set a peak hour target of 40 mph or better for the Interstate General Purpose (GP) lane system. In FY 2015, the average peak hour speed for the morning period was 38 mph. The average peak hour speed for the evening period was 37 mph.





# 2015 Honors

American Public Works Association (APWA) Georgia Chapter awarded projects representing the **best achievements in the public works profession**:

★ Highway 51 at Lake Hartwell was named Project of the Year for Emergency Repairs costing less than \$5 million; and Highway 10/U.S. 78 bridge over the Apalachee River was named Project of the Year for Historic Preservation. Highway 11/Broad Street pavement rehabilitation in Winder received two awards: Small Cities/Rural Communities Transportation Project of the Year and the Technical Innovation Project of the Year.

★ Georgia Planning Association (GPA) awarded a special Honorable Mention to the State Route 144 environmental assessment (EA), the **first NEPA study** to be so honored. Cooperation among stakeholders—GDOT, Adrian Collaborative and FHWA—resulted in a shortened schedule that met a tight deadline for funding.

★ American Council of Engineering Companies (ACEC) of Georgia in their 2014 Georgia Partnership for Transportation Quality (GPTQ) Awards recognized two projects as **best in state**. The Collins Hill Road Bridge over State Route 316 in Lawrenceville was named Best Bridge Deck Steel Cover. The resurfacing project on State Route 400 from State Route 306 in Forsyth County to SR 53 in Dawson County earned the smoothness award for Asphaltic Concrete Open Graded Mixture.

★ American Council of Engineering Companies (ACEC) of Georgia awarded the Pleasant Hill Road over I-85 diverging diamond interchange – the first eight-lane DDI of its kind in the U.S. – with the 2014 **Engineering Excellence** Award.

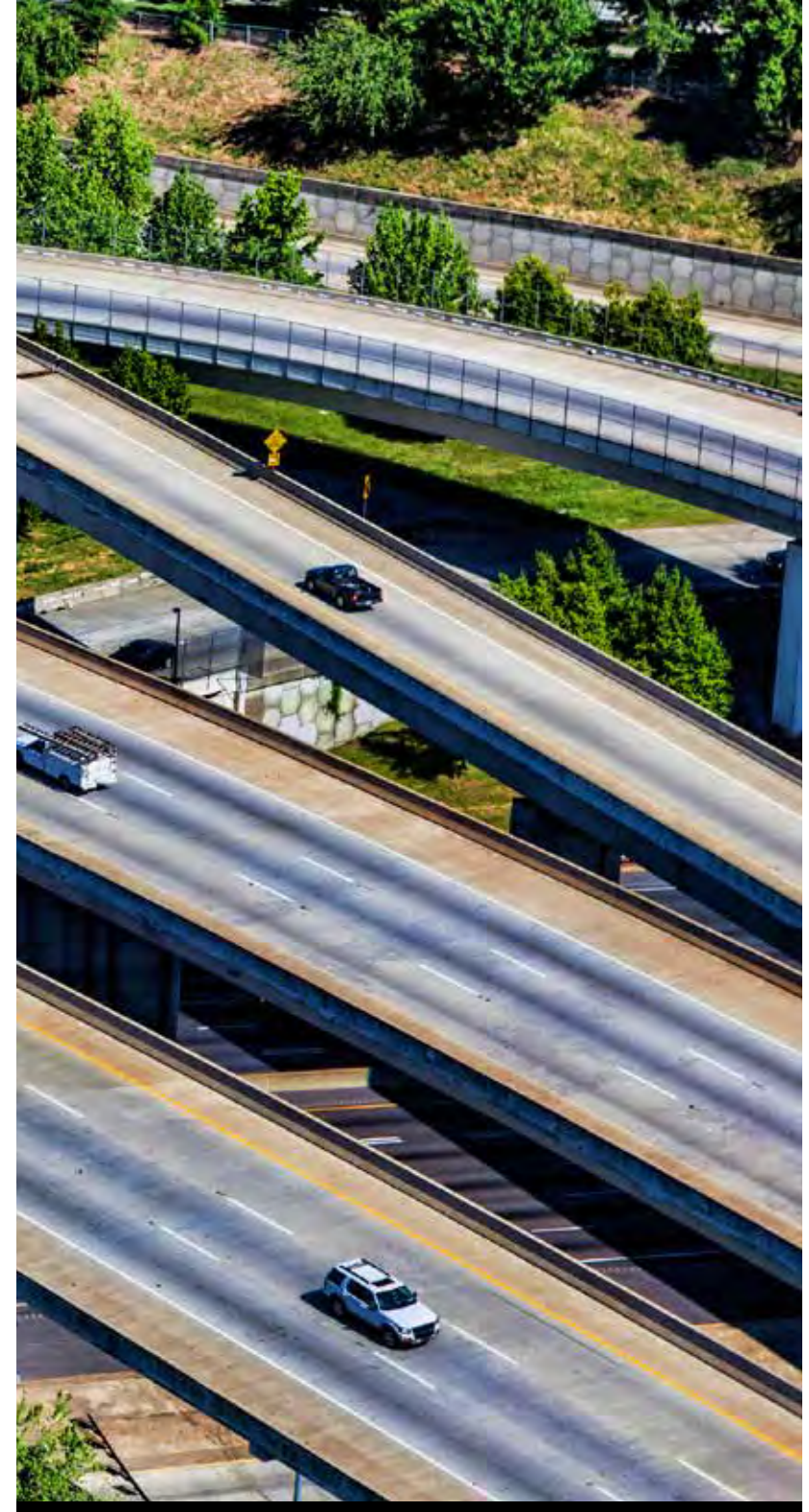
★ Federal Highway Administration (FHWA) awarded GDOT the 2015 **Environmental Excellence** Award in Ecosystems, Habitat, and Wildlife for the Longleaf Pine and Gopher Tortoise Habitat Restoration Project.

★ *Engineering News Record* magazine in their annual **best projects** listings recognized Harry S. Truman Parkway Phase V with an Award of Merit in the Highways/Bridges category.

★ Georgia Engineers Week **Engineering Excellence** 2015 Gala Awards recognized three projects: Canton Road Bridge & GA NE Railroad Bridge Replacement over SR3/US 41 project received the Honor Award; I-85/GA 400 Interchange Ramps and North Fork Creekside Trail Design/Build project received a State Award for Engineering Excellence; and North Broad Street Redevelopment project in Winder received a State Award for Engineering Excellence.

★ The Institute of Transportation Engineers 2015 Transportation Planning Council awarded their national **Best Project** Award to the Office of Planning's Metro Atlanta Operational Planning Study.

★ AASHTO's Environmental Technical Assistance Program recognized the Office of **Environmental Services** (OES) work on State Route 144 in Bryan County. The project also received an award from the American Planning Association for the Environmental Assessment document. OES was also awarded the American Association for State and Local History 2015 Award of Merit for the Abercorn Archaeology project.







**Commissioner and Special Staff**

Customer Service Desk.....	404.631.1990
Commissioner .....	404.631.1000
Deputy Commissioner.....	404.631.1023
Chief Engineer .....	404.631.1004
Treasurer.....	404.631.1000
State Transportation Board Secretary.....	404.631.1001
Engineering Services.....	404.631.1770
Policy and Government Affairs .....	404.631.1000
Transportation Investment Act (TIA) Administrator.....	404.631.1733

**Division of Administration/General Counsel**

Director .....	404.631.1499
Deputy General Counsel /Legal Services.....	404.631.1499
General Support .....	404.631.1254
Construction Claims.....	404.631.1499
Audits.....	404.631.1333
Equal Employment Opportunity (EEO) .....	404.631.1972
Human Resources .....	404.631.1500

**Division of Construction**

Director .....	404.631.1971
Bidding Administration.....	404.631.1147
Construction .....	404.631.1971
Materials ..	404.608.4700

**Division of Engineering**

Director .....	404.631.1520
Bridge Design .....	404.631.1985
Design Policy & Support.....	404.631.1978
Environmental Services.....	404.631.1102
Right-of-Way .....	404.347.0220
Roadway Design.....	404.631.1977

**Division of Finance**

Director .....	404.347.0471
Budget Services .....	404.631.1316
Financial Management.....	404.631.1291
General Accounting.....	404.347.0313

**Division of Intermodal**

Director .....	404.347.0573
Intermodal .....	404.347.0574

**Division of Local Grants and Field Services**

Director .....	404.631.1023
Local Grants .....	404.347.0240
Equipment .....	770.484.3201

**District Offices**

D1 / Gainesville .....	770.532.5500
D2 / Tennille.....	478.552.4601
D3 / Thomaston .....	706.646.6900
D4 / Tifton.....	229.386.3280
D5 / Jesup.....	912.427.5711
D6 / Cartersville.....	770.387.3602
D7 / Chamblee/Metro Atlanta .....	770.986.1011

**Division of Permits and Operations**

Director .....	404.631.1400
Maintenance .....	404.631.1387
Maintenance Activities Unit (MAU).....	404.363.7625
Traffic Operations .....	404.635.2800
Crash Reporting .....	404.635.2850
Oversize Permit Unit.....	404.635.8176
Real-Time Traffic Information/HERO Assistance.....	511
Traffic Management Center (TMC).....	404.635.2800
Transportation Data .....	404.347.0701
Utilities .....	404.631.1354

**Division of Planning**

Director .....	404.631.1802
Planning.....	404.631.1744

**Division of Public Private Partnerships (P3)/Program Delivery**

Director.....	404.631.1928
P3 Administrator.....	404.631.1300
Innovative Program Delivery .....	404.631.1703
Program Control .....	404.631.1929
Program Delivery.....	404.631.1930

**Organizational Performance Management**

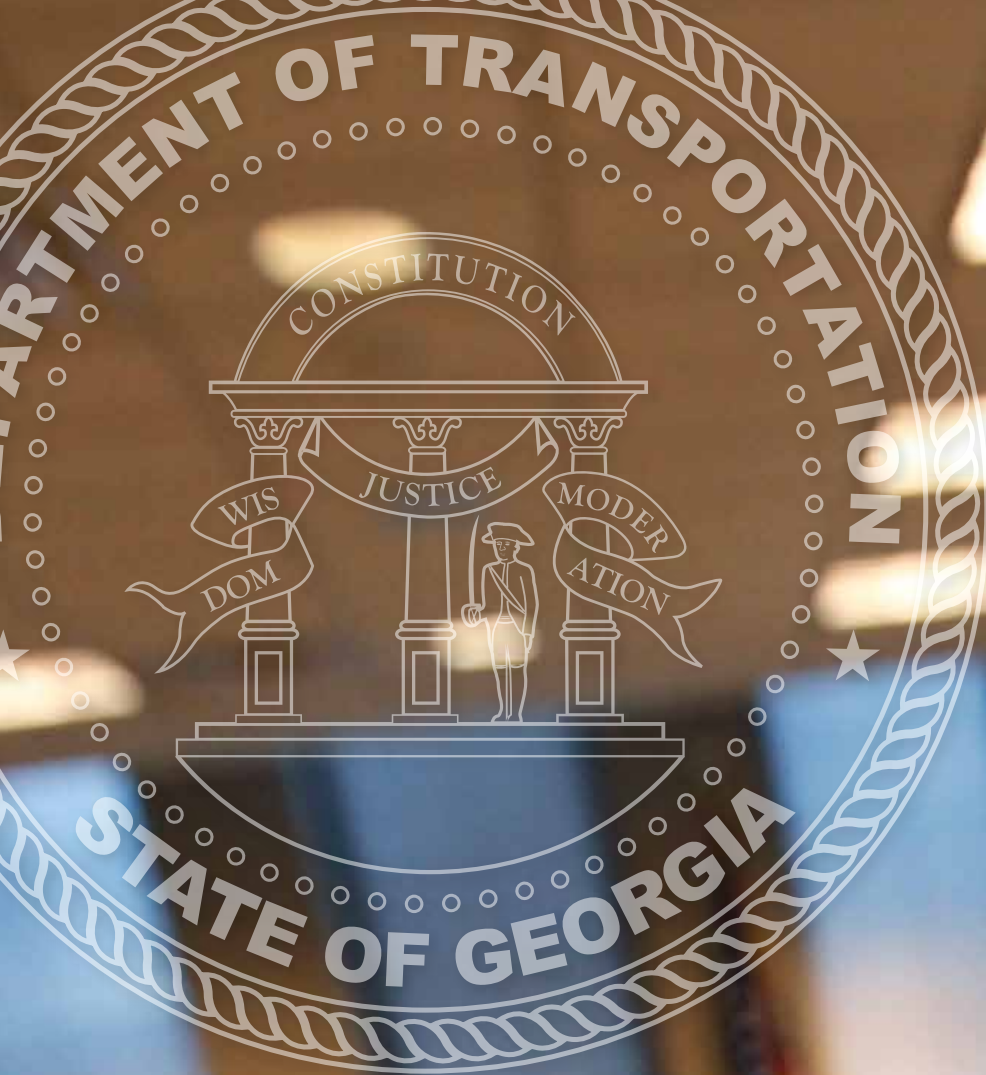
OPM.....	404.631.1743
Research .....	404.608.4712

**Procurement**

Chief Acquisition Officer.....	404.631.1435
Operational Purchasing .....	404.631.1367
Procurement/General Support.....	404.631.1254
Transportation Services Procurement .....	404.631.1427

**Other Key Offices**

Communications .....	404.631.1931
Information Technology .....	404.631.1590
IT Applications.....	404.631.1643
IT Infrastructure.....	404.631.1634



## State Transportation Board

Georgia DOT is governed by a 14-member State Transportation Board which exercises general control and supervision of the Department. The Board is entrusted with powers which include, but are not limited to: appointing the Commissioner; designating which public roads are encompassed within the state highway system; and approving long-range transportation plans. Board Members are elected by a majority of a General Assembly caucus from each of Georgia's 14 Congressional Districts. Each board member serves a five-year term.



**Ann R. Purcell**  
Congressional  
District 1  
410 Willowpeg Way  
Rincon, GA 31326  
912.663.8128  
apurcell@dot.ga.gov



**Tim Golden**  
Congressional  
District 8  
110 Beacon Hill  
Valdosta, GA 31602  
229.241.1284  
tgolden@dot.ga.gov



**Johnny Floyd**  
Congressional  
District 2  
P.O. Box 5260  
Cordele, GA 31010  
229.273.5312  
jofloyd@dot.ga.gov



**Emily Dunn**  
Congressional  
District 9  
P.O. Box 56  
Blue Ridge, GA 30513  
706.632.5000  
edunn@dot.ga.gov



**Sam M. Wellborn**  
Congressional  
District 3  
2110 Oak Avenue  
Columbus, GA 31906  
706.615.0965  
swellborn@dot.ga.gov



**Jamie Boswell**  
Congressional  
District 10  
255 Pendleton Drive  
Athens, GA 30606  
706.714.3137  
jboswell@dot.ga.gov



**Robert L. Brown, Jr.**  
Congressional  
District 4  
250 E. Ponce de Leon  
Avenue, Eighth Floor  
Decatur, GA 30030  
404.377.2460  
robrown@dot.ga.gov



**Jeff Lewis**  
Congressional  
District 11  
P.O. Box 480  
White, GA 30184  
770.382.4411  
jeflewis@dot.ga.gov



**Stacey J. Key**  
Congressional  
District 5  
P.O. Box 29033  
Atlanta, GA 30359  
404.310.5040  
skey@dot.ga.gov



**Don Grantham**  
Congressional  
District 12  
P.O. Box 3145  
Augusta, GA 30914  
706.738.7786  
dgrantham@dot.ga.gov



**J. Mark Burkhalter**  
Congressional  
District 6  
303 Peachtree Street, NE  
Suite 5300  
Atlanta, GA 30308  
404.527.4156  
mburkhalter@dot.ga.gov



**Dana L. Lemon**  
Congressional  
District 13  
300 Griffin Street  
McDonough, GA 30253  
770.490.9125  
dalemon@dot.ga.gov



**Rudy Bowen**  
Congressional  
District 7  
5696 Kennedy Road  
Suwanee, GA 30024  
404.317.3310  
rubowen@dot.ga.gov



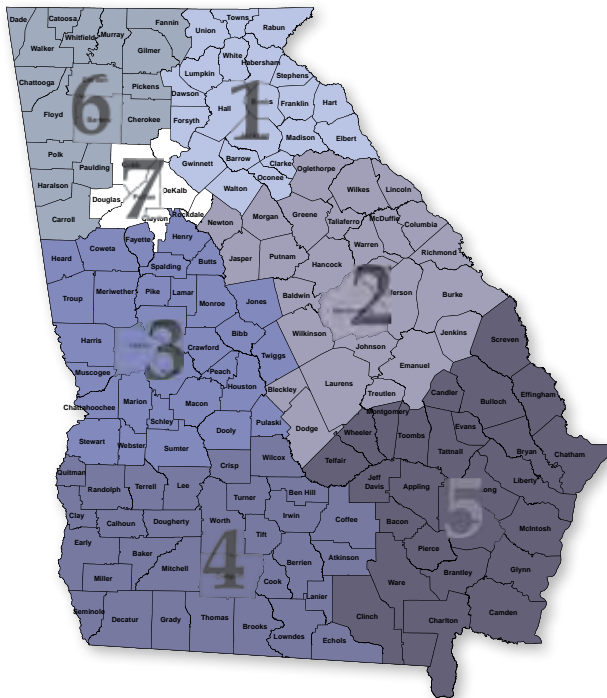
**Roger Williams**  
Congressional  
District 14  
349 Ivey Gate Ridge  
Suite 4  
Dalton, GA 30720  
706.618.6029  
rogwilliams@dot.ga.gov



**G**eorgia  
**DOT** has  
seven

**district offices**

which are  
responsible for  
operating and  
maintaining the  
transportation  
system at the  
local level.



**District 1**

Brent Cook, P.E.  
District Engineer  
2505 Athens Hwy SE,  
Gainesville, GA 30507  
770.532.5526  
bcook@dot.ga.gov

**District 2**

Jimmy Smith, P.E.  
District Engineer  
643 Highway 15 S  
Tennille, GA 31809  
478.552.4601  
jismith@dot.ga.gov

**District 3**

Michael Presley, P.E.  
District Engineer  
115 Transportation Blvd.  
Thomaston, GA 30286  
706.646.6900  
mpresley@dot.ga.gov

**District 4**

Chad Hartley  
District Engineer  
710 West 2nd St.  
Tifton, GA 31793  
229.386.3280  
chartley@dot.ga.gov

**District 5**

Karon Ivery  
District Engineer  
204 North Highway 301  
Jesup, GA 31546  
912.427.5711  
kivery@dot.ga.gov

**District 6**

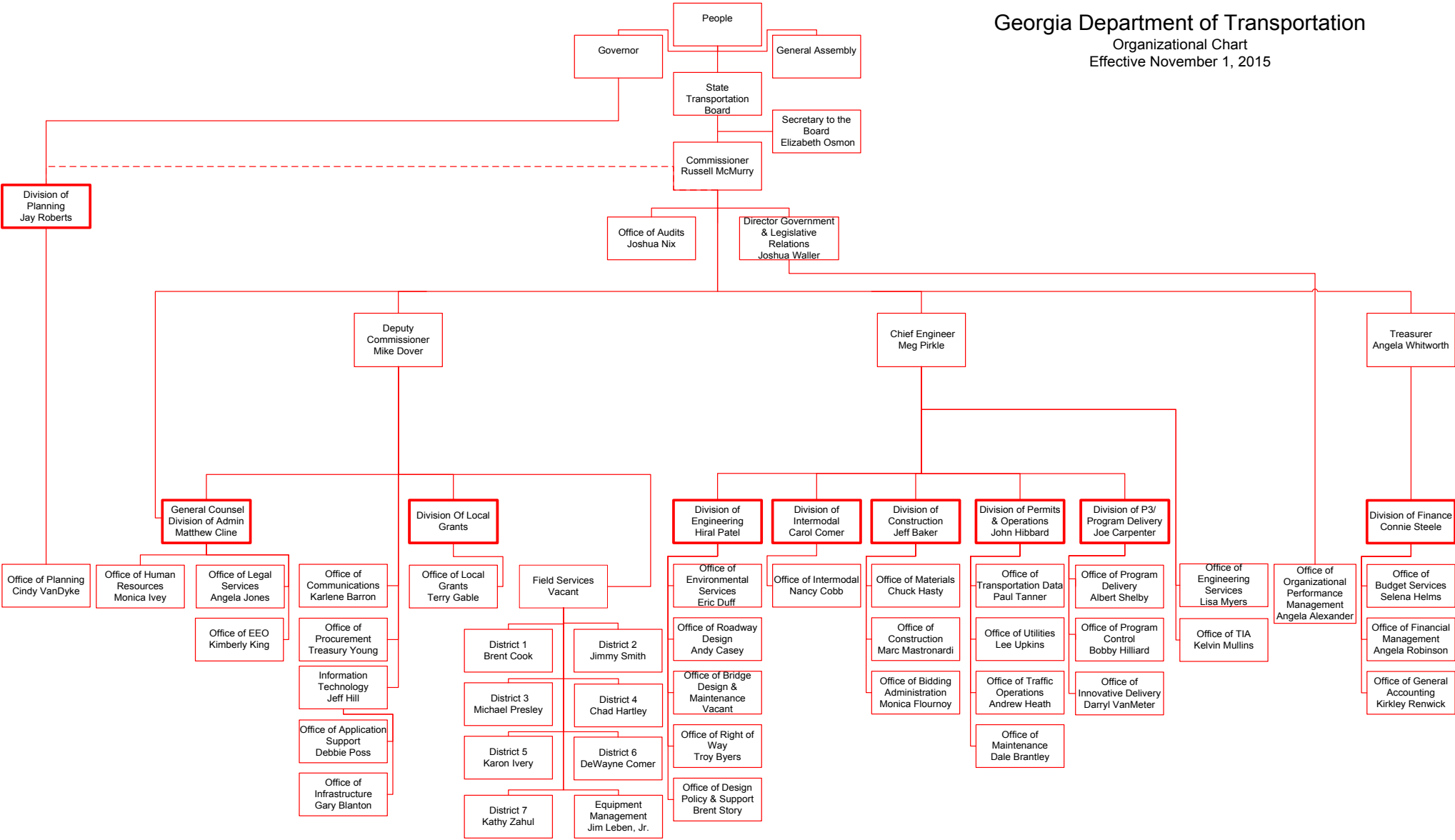
DeWayne Comer, P.E.  
District Engineer  
500 Joe Frank Harris Parkway  
P.O. Box 10  
Cartersville, GA 30120  
770.387.3602  
dcomer@dot.ga.gov

**District 7**

Kathy Zahul, P.E.  
District Engineer  
5025 New Peachtree Rd.  
Chamblee, GA 30341  
770.986.1011  
kzahul@dot.ga.gov



Georgia Department of Transportation  
Organizational Chart  
Effective November 1, 2015





## Value Engineering

Value Engineering (VE) is a formal process used in many sectors - including transportation - to add value by improving quality and constructability while lowering life-cycle costs. This is done by recommending creative alternatives during the early stages of project development. Historically, the VE program at GDOT has been ranked in the top five nationally and has outperformed many states by identifying potential cost savings totaling over \$1 billion. This initiative has amounted to an average return on investment of approximately \$200 for every dollar spent conducting VE Studies in Georgia.

Both Federal and State law have established a \$50 million threshold for conducting VE Studies. In FY 2015 there were no projects which met the criteria. However, it is evident that the design culture at GDOT has been enhanced through past VE experience and the implementation of VE principles which are still paying dividends in project development today. Since VE continues to impact the way designers and planners think, there are many

unseen benefits which currently remain. For example, the Department strives to continually reduce, eliminate and/or avoid environmental and other major impacts to surrounding communities by utilizing past implemented VE recommendations such as reduced typical sections. In an effort to keep VE principles viable, the Concept Development phase is targeted to provide a review of the Draft Concept Report and apply VE principles to suggest recommendations at the Concept Meeting with the sole purpose of adding value to projects during the early stages of project development.

Value Engineering Studies held and implemented in FY 2015	
	NONE



Attachment A

Georgia DOT Construction Projects Greater than \$10M Open to Traffic  
During Calendar Years 2014 and 1st Half 2015

Project Count	Contract Id	Federal/State Project No	GDOT PI NO	Project Description	County	Current Specified Completion Date	Time Charges Stop Date	Construction Completed On Time	Project Allotment	Final Pay	% of Project Allotment	Within Budget	Reason for Time and/or Budget Overrun
1	B14222-12-000-0	STP00-2688-00(004)	170735-	SR 347 - 2.073 MI WIDENING & RECNST	Hall	11/30/2014	11/17/2014	Yes	\$13,964,445	\$11,459,461	82.1%	Yes	
2	B14158-11-000-0	NH000-0520-01(017)	210700-	I-520/SR 415 - 4.700 MI WIDENING & RECNST	Richmond	2/20/2015	2/6/2015	Yes	\$32,946,776	\$31,375,005	95.2%	Yes	
3	B14134-11-000-0	CSNHS-M003-00(243)	M003243	I-75/SR 401 - CONCRETE REHAB	Dooly	3/31/2015	1/14/2015	Yes	\$55,815,239	\$53,396,887	95.7%	Yes	
4	B14216-12-000-1	NHIM0-0075-02(213)	312160-	JODECO RD (CR 824) & I-75/SR -1.221 MI INTERCHNG IMPROVEMTS	Henry	6/29/2015	6/29/2015	Yes	\$17,088,291	\$15,407,770	90.2%	Yes	
5	B14344-12-M00-0	NH000-0001-04(047)	342621-	US 19/US 41/SR 3 - 2.760 MI WIDENING OF LANES	Spalding	10/10/2014	9/30/2014	Yes	\$14,565,180	\$15,312,455	105.1%	Yes	
6	B14219-12-000-2	CSHPP-0007-00(550)	0007550	BROAD AVE - 0.207 MI BRIDGE REPLACEMENT	Dougherty	8/29/2015	8/28/2015	Yes	\$12,495,496	\$11,624,750	93.0%	Yes	
7	B14358-12-000-1	CSSTP-0007-00(183)	0007183	SR 35 - SAFETY IMPROVEMENTS	Colquitt	1/27/2015	2/6/2015	No	\$16,565,312	\$14,386,730	86.8%	Yes	Contractor did not complete the work on time.
8	B34398-12-000-0	EDS00-0027-00(159)	422230-	US 27/SR 1 - WIDENING & RCNS	Clay	5/7/2015	5/1/2015	Yes	\$31,415,480	\$25,654,332	81.7%	Yes	
9	B14408-12-000-0	NHS00-0001-00(585)	0001585	SR 99 - RCNST	Glynn	4/18/2015	5/11/2015	No	\$11,827,764	\$10,622,075	89.8%	Yes	Contractor did not complete the work on time.
10	B14636-13-000-1	M004589	M004589	I-20/SR 402 - MILLING & PLMX RESF	Douglas	11/30/2014	10/28/2014	Yes	\$11,901,790	\$11,389,082	95.7%	No	
11	B14722-14-000-0	M004644	M004644	SR 402 - MILLING, INLAY, PLMX RESF & SHLDR REHAB	Newton Rockdale	7/15/2015	7/7/2015	Yes	\$11,733,696	\$16,334,844	139.2%	No	Over budget due to deep milling repair
12	B13140-09-000-2	CSSTP-0008-00(651)	0008651	SR 204 SPUR - BRIDGE REPLACEMENT	Chatham	8/10/2014	12/9/2014	No	\$23,988,731	\$22,907,557	95.5%	Yes	Contractor did not complete the work on time.
13	B14051-11-000-0	BRMLB-9004-00(008)	752630-	CANTON RD (CR 4455) - 0.671 MI BRIDGE RECNST	Cobb	8/8/2014	8/8/2014	Yes	\$16,329,000	\$10,518,016	64.4%	Yes	
14	B34047-11-000-0	NH000-0085-02(153)	762380-	I-85/SR 403/SR 400 - 1.390 MI INTERCHANGE CNST CONN RAMPS	Fulton	1/21/2014	7/9/2014	No	\$22,558,216	\$22,270,644	98.7%	Yes	Contractor did not complete the work on time.
								Totals	\$ 293,195,416	\$ 272,659,607	93.0%		



Attachment B

Georgia DOT Active Construction Projects Over \$10 Million in Value  
SB 200 Report for Calendar Year 2015

Project Count	Contract Id	Federal/State Project No	GDOT PI NO	Project Description	County	DOT District	Completion Date	Percentage of Time Used	Construction On Schedule for Completion Date	Project Allotment	Project Current Amt	Earnings To Date	Project Pct Complete (Earnings)	Within Budget	Project Schedule & Budget Summary
1	B14123-11-000-0	MSL00-0004-00(086)	0004086	SR 316 - 2.237 MI INTERSECTION IMPROVEMENT	Gwinnett	1	5/31/2017	45.48%	Yes	\$43,187,480	\$54,733,745	\$48,243,488	88.1%	No	Over budget due to utility and bridge issues.
2	B14279-12-000-1	NH000-0051-01(025)	122850-	SR 10 LOOP - 1.142 MI INTERCHANGE RECONSTRUCTION	Clarke	1	5/31/2016	62.78%	Yes	\$16,776,191	\$15,322,920	\$14,190,687	92.6%	Yes	On time and within budget to complete.
3	B14318-12-000-0	NH000-0002-07(023)	162390-	US 129/SR 11 - 1.970 MI CNST OF THE WEST CLEVELAND BYPASS	White	1	5/31/2016	80.78%	Yes	\$20,085,275	\$18,128,447	\$13,606,593	75.1%	Yes	Contractor behind schedule but continuing to work. Contractor has submitted a revised progress schedule.
4	B14363-12-000-0	STP00-2984-00(001)	162430-	SR 347 - 7.915 MI WIDENING & RECONSTRUCTION	Hall	1	1/12/2016	71.67%	Yes	\$44,397,079	\$43,304,962	\$32,468,459	75.0%	Yes	On time and within budget to complete.
5	B14446-13-000-0	EDS00-0545-00(020)	122110-	SR 17 - RDWY IMPROVEMENTS	Stephens	1	5/31/2016	58.31%	Yes	\$52,353,091	\$50,404,936	\$26,689,596	53.0%	Yes	On time and within budget to complete.
6	B14473-13-000-0	BRST0-0054-01(063)	132985-	SR 20 - BRIDGE REPLACEMENT	Forsyth	1	5/31/2016	41.64%	Yes	\$11,085,523	\$12,363,931	\$4,881,235	39.5%	No	Over budget due to revisions to the ESC Plans
7	B14493-13-000-0	EDS00-0545-00(037)	122260-	SR 17/SR 17 ALT - ROADWAY IMPROVEMENTS	Stephens	1	4/30/2016	56.19%	Yes	\$22,612,420	\$21,618,981	\$10,159,508	47.0%	Yes	On time and within budget to complete.
8	D30004-13-000-0	0004430	0004430	SR 20 - WIDENING AND RECONSTRUCTION	Gwinnett	1	6/1/2017	0.55%	Yes	\$32,878,407	\$31,826,682	\$2,398,381	7.5%	Yes	On time and within budget to complete.
9	B14742-14-000-0	STP00-0002-00(392)	0002392	SR 20 (BUFORD HWY) - WIDENING AND RECONSTRUCTION	Forsyth	1	7/30/2017	40.89%	Yes	\$22,285,573	\$20,947,016	\$2,967,016	14.2%	Yes	On time and within budget to complete.
10	B14811-14-000-0	EDS00-0072-00(028)	122100-	SR 72 - WIDENING AND RECONSTRUCTION	Madison	1	12/31/2016	33.85%	Yes	\$21,016,576	\$18,406,360	\$5,019,103	27.3%	Yes	On time and within budget to complete.
11	B14827-14-000-0	STP00-1267-00(008)	142060-	SR 53 (MARS HILL) - WIDENING AND RECONSTRUCTION	Oconee	1	5/26/2018	21.50%	Yes	\$29,583,949	\$27,772,886	\$6,856,731	24.7%	Yes	On time and within budget to complete.
12	B14841-14-000-0	122650-	122650-	SR 72 - WIDENING AND RECONSTRUCTION	Elbert	1	1/27/2018	15.15%	Yes	\$50,640,798	\$49,117,393	\$6,595,620	13.4%	Yes	On time and within budget to complete.
13	B14863-14-000-0	0010194	0010194	SR 115 - CLEVELAND BYPASS	White	1	10/10/2017	26.05%	Yes	\$27,426,561	\$24,961,167	\$6,280,341	25.2%	Yes	On time and within budget to complete.
14	B34939-15-000-0	0013367	0013367	SR 400 - WIDENING	Forsyth	1	5/31/2018	0.00%							
15	B15001-15-000-0	110600-	110600-	I-85/SR 403 - WIDENING DESIGN BUILD	Gwinnett	1	6/26/2018	0.00%	Yes	\$139,565,847	\$139,565,847	\$0	0.0%	Yes	Notice to Proceed issued 9/1/2015.
16	B13451-10-000-2	BR000-0001-00(370)	0001370	US 378/SR 43 - 0.728 MI BRIDGE REPLACEMENT	Lincoln	2	3/31/2017	77.31%	Yes	\$17,376,808	\$38,156,781	\$31,073,319	81.4%	No	Over budget due to foundation issues.
17	B14064-11-000-0	HPPNF-0540-00(029)	222285-	SR 24/SR 540 - 8.497 MI WIDENING & RCNS	Washington	2	4/11/2015	110.70%	No	\$49,391,947	\$47,192,719	\$19,092,207	40.5%	Yes	Contractor behind schedule but continuing to work. Liquidated Damages being assessed.
18	B14130-11-M00-0	HPPNF-0540-00(026)	222280-	SR 24/SR 540 - 12.071 MI WIDENING	BaldwinWashington	2	8/5/2015	101.90%	No	\$33,576,635	\$31,973,426	\$19,290,717	60.3%	Yes	Contractor behind schedule but continuing to work. Liquidated Damages being assessed.
19	B14413-12-000-0	STP00-7001-00(009)	250510-	WRIGHTSBORO RD WIDENING AND RECOSTRUCTION	Richmond	2	7/21/2015	105.53%	No	\$20,122,955	\$20,100,132	\$15,803,142	78.6%	Yes	Contractor behind work but continuing to work.
20	B14438-12-000-0	CSNHS-M003-00(956)	M003956	SR 404 - CONC REHAB	LaurensTreutlen	2	11/12/2015	54.80%	Yes	\$57,022,485	\$58,195,859	\$47,440,071	81.5%	Yes	On time and within budget to complete.
21	B14449-12-000-1	EDS00-0000-00(346)	0000346	SR 540 - CNST REALIGNMENT	Wilkinson	2	10/17/2016	52.26%	Yes	\$64,076,245	\$76,551,812	\$60,210,244	78.7%	No	Over budget due to bridge issues.
22	B14584-13-000-0	CSSTP-0006-00(431)	0006431	SR 56 (MIKE PADGETT HWY) - WIDENING & RCNS	Richmond	2	9/21/2016	36.19%	Yes	\$30,407,877	\$28,952,249	\$11,976,573	41.4%	Yes	On time and within budget to complete.
23	B14657-13-000-0	BRST0-0076-01(036)	232310-	SR 47 - BRIDGE REPLACEMENT	Lincoln	2	8/20/2016	2.45%	Yes	\$27,165,357	\$24,117,354	\$8,882,188	36.8%	Yes	On time and within budget to complete.
24	B14677-13-T00-0	STP00-7063-00(001)	250470-	OLD PETERSBURG RD/OLD EVANS RD - WIDENING AND CONSTRUCTION	Columbia	2	4/30/2017	49.96%	Yes	\$40,373,221	\$35,565,457	\$12,169,827	34.2%	Yes	On time and within budget to complete.
25	B14746-14-000-4	BR002-0001-00(370)	0001370	US 378/SR 43 - BRIDGE CONSTRUCTION	Lincoln	2	12/31/2014	208.91%	No	\$10,761,660	\$10,249,200	\$9,745,892	95.1%	Yes	Contractor behind schedule but continuing to work.
26	B14778-14-000-0	STP00-7007-00(006)	250610-	WINDSOR SPRING RD (CR 65) - BRIDGE REPLACEMENT	Richmond	2	4/30/2017	24.45%	Yes	\$29,199,854	\$25,856,211	\$3,639,509	14.1%	Yes	On time and within budget to complete.
27	B14825-14-T00-1	STP00-0000-00(833)	0000833	NEW OCONEE RIVER CROSSING-GRADING, DRAINAGE, BASE & PAVING	Laurens	2	9/30/2016	3.02%	Yes	\$13,095,180	\$12,780,850	\$3,708,384	29.0%	Yes	On time and within budget to complete.
28	B14533-13-000-0	STP00-8042-00(006)	350850-	EASTERN CONNECTOR - CNST & WIDENING	Muscogee	3	10/6/2015	68.20%	Yes	\$13,411,596	\$14,957,368	\$10,139,565	67.8%	Yes	On time and within budget to complete.
29	B14535-13-000-0	0009157	0009157	I-75 - DESIGN BUILD	Henry	3	6/30/2017	51.19%	Yes	\$72,572,424	\$69,182,306	\$25,095,044	36.3%	Yes	On time and within budget to complete.
30	B14535-13-000-0	0009156	0009156	I-75 - DESIGN BUILD	Henry	3	6/30/2017	51.19%	Yes	\$118,035,028	\$112,836,264	\$36,755,082	32.6%	Yes	On time and within budget to complete.
31	B14564-13-000-0	CSNHS-0008-00(406)	0008406	SR 96 - WIDENING & RCNS	Houston	3	5/31/2016	55.97%	Yes	\$28,147,922	\$26,326,438	\$10,461,312	39.7%	Yes	On time and within budget to complete.

Attachment B

Georgia DOT Active Construction Projects Over \$10 Million in Value  
SB 200 Report for Calendar Year 2015

Project Count	Contract Id	Federal/State Project No	GDOT PI NO	Project Description	County	DOT District	Completion Date	Percentage of Time Used	Construction On Schedule for Completion Date	Project Allotment	Project Current Amt	Earnings To Date	Project Pct Complete (Earnings)	Within Budget	Project Schedule & Budget Summary
32	B14592-13-000-0	STP00-0155-01(021)	322450-	SR 96 - WIDENING & RCNS	Houston	3	7/31/2016	50.28%	Yes	\$15,606,023	\$14,828,988	\$6,575,264	44.3%	Yes	On time and within budget to complete.
33	B14671-13-000-0	CSNHS-0008-00(407)	0008407	SR 96 - WIDENING, RECON & BRIDGE CONSTR.	Houston	3	4/30/2017	45.30%	Yes	\$34,902,695	\$32,974,957	\$10,979,499	33.3%	Yes	On time and within budget to complete.
34	B14693-14-000-1	CSNHS-0007-00(251)	0007251	SR 96 - INTERCHANGE RECON	Twiggs	3	7/31/2016	47.84%	Yes	\$16,379,276	\$15,382,551	\$8,337,186	54.2%	Yes	On time and within budget to complete.
35	B14711-13-000-0	STP00-0004-02(031)	322540-	SR 899 (GRAY NORTH BYPASS) - ROADWAY CONSTRUCTION	Jones	3	5/31/2017	31.06%	Yes	\$46,389,207	\$42,047,492	\$17,289,746	41.1%	Yes	On time and within budget to complete.
36	B14784-14-000-0	NH000-0001-04(062)	332890-	US19/SR 3 - WIDENING AND RECONSTRUCTION	Spalding	3	8/31/2016	9.16%	Yes	\$13,079,847	\$12,128,842	\$6,119,018	50.5%	Yes	On time and within budget to complete.
37	B14785-14-000-0	CSSTP-0007-00(694)	0007694	SR 16 - WIDENING & RECONSTRUCTION	Coweta	3	5/31/2018	28.48%	Yes	\$12,822,120	\$12,100,916	\$4,820,690	39.8%	Yes	On time and within budget to complete.
38	B14817-14-000-0	STP00-0011-01(053)	332820-	US 27/SR 1 - WIDENING & RECONSTRUCTION	Muscogee	3	6/30/2017	22.76%	Yes	\$16,670,194	\$13,956,015	\$3,349,791	24.0%	Yes	On time and within budget to complete.
39	B14874-14-000-0	STP00-0000-00(566)	0000566	SARDIS CHURCH RD - WIDENING & RCNS	Bibb	3	5/31/2019	6.08%	Yes	\$58,675,290	\$55,297,642	\$7,009,820	12.7%	Yes	On time and within budget to complete.
40	B14880-15-000-0	NHS00-0005-00(320)	0005320	I-75/SR 401 AT SR 215 - INTERCHANGE RECONSTRUCTION	Dooley	3	12/31/2017	0.00%	Yes	\$20,790,434	\$20,113,306	\$0	0.0%	Yes	Notice to Proceed issued 8/11/2015.
41	B10247-00-000-2	NH-75-1(157) 01	410250-	I-75 - 14.530 MI WDN/ADL LNS MILL PLT MIX RESF BRIDGE REHAB	Crisp Turner	4	7/27/2003	145.20%	No	\$54,445,713	\$54,006,518	\$53,525,358	99.1%	Yes	Contract in litigation.
42	B14596-13-000-0	NH000-0006-02(055)	422550-	SR 3 (LIBERTY EXPWY) - WIDENING	Dougherty	4	12/31/2015	61.55%	Yes	\$15,169,612	\$13,237,176	\$10,579,082	79.9%	Yes	On time and within budget to complete.
43	B14782-14-000-0	NHS00-0000-00(803)	0000803	I-75/SR 401 - INTERCHANGE RECONSTRUCTION	Tift	4	11/30/2016	48.57%	Yes	\$17,513,836	\$15,579,028	\$3,960,026	25.4%	Yes	On time and within budget to complete.
44	B14800-14-000-0	STP00-0003-00 (430)	0003430	CARPENTER RD (CR 76) - WIDENING & RECON	Tift	4	10/31/2015	22.04%	Yes	\$11,441,507	\$10,936,814	\$7,707,372	70.5%	Yes	On time and within budget to complete.
45	B14812-14-000-0	STP00-0032-02(028)	431780-	SR 133 - WIDENING & RECONSTRUCTION	Colquitt	4	7/31/2016	1.66%	Yes	\$17,389,921	\$16,482,926	\$2,602,819	15.8%	Yes	On time and within budget to complete.
46	B14819-14-000-0	STP00-0000-00(543)	0000543	SR 133 - WIDENING & RECONSTRUCTION	Brooks	4	6/30/2016	10.87%	Yes	\$24,488,205	\$22,862,805	\$4,944,959	21.6%	Yes	On time and within budget to complete.
47	B34588-13-T00-0	EDS00-0027-00(174)	422235-	US 27/SR 1 - WIDENING & RCNS	Randolph	4	5/31/2016	59.67%	Yes	\$34,545,568	\$33,164,788	\$12,919,948	39.0%	Yes	On time and within budget to complete.
48	D30054-14-000-0	0012683	0012683	VARIOUS LOCATIONS - WEIGH-IN-MOTION SCALES - DESIGN BUILD	All Counties	4	3/9/2017	39.93%	Yes	\$25,321,575	\$25,351,575	\$3,102,486	12.2%	Yes	On time and within budget to complete.
49	B14118-11-000-0	EDS00-0545-00(014)	522130-	US 1/SR 4 - WIDENING OF LANES	EmanuelToombs	5	10/6/2015	97.53%	Yes	\$27,359,407	\$26,317,137	\$21,791,625	82.8%	Yes	On time and within budget to complete.
50	B14513-13-000-0	NH000-0009-02(093)	522920-	US 17/SR 404 SPUR - BRIDGE REPLACEMENT	Chatham	5	12/31/2015	79.77%	No	\$15,220,408	\$16,525,913	\$14,947,920	90.5%	Yes	Over budget due to mass concrete.
51	B14731-14-000-0	NH000-0111-01(024)	522870-	SR 204 - INTERCHANGE & BRIDGE CONSTR	Chatham	5	7/31/2017	50.05%	Yes	\$29,482,459	\$28,583,337	\$8,474,350	29.6%	Yes	On time and within budget to complete.
52	B14754-14-000-0	CSNHS-0007-00(421)	0007421	I-95/SR 405 AT SR 251 - BRIDGE REPLACEMENT	McIntosh	5	4/30/2017	29.10%	Yes	\$16,262,076	\$15,453,740	\$2,438,620	15.8%	Yes	On time and within budget to complete.
53	B14775-14-000-0	STP00-0004-00(917)	0004917	SR 119 - WIDENING & RECONSTRUCTION	Liberty	5	4/30/2017	26.69%	Yes	\$20,117,617	\$19,075,511	\$3,101,483	16.3%	Yes	On time and within budget to complete.
54	B14808-14-T00-1	BR000-0001-00(216)	0001216	US 1/SR 4/SR 15 - BRIDGE REPLACEMENT	Appling	5	9/30/2018	12.45%	Yes	\$26,575,608	\$25,778,471	\$9,287,167	36.0%	Yes	On time and within budget to complete.
55	B34161-11-000-0	CSMSL-0008-00(690)	0008690	JIMMY DELOACH CONNECTOR - 3.140 MI DESIGN BUILD	Chatham	5	5/31/2016	82.29%	Yes	\$82,204,444	\$74,410,115	\$62,726,812	84.3%	Yes	On time and within budget to complete.
56	B14127-11-000-0	HPPNH-0012-01(085)	621660-	WEST ROME BYPASS - 5.478 MI CNST	Floyd	6	10/30/2015	95.89%	Yes	\$45,328,162	\$44,695,214	\$40,764,598	91.2%	Yes	On time and within budget to complete.
57	R30847-10-S00-0	MSL-0004-00(688) R3	0004688	SP - E HIRAM PARKWAY - CONSTRUCT - FROM SR 92 TO SR 6/US 278	Paulding	6	8/5/2013	179.40%	No	\$22,186,078	\$16,319,208	\$16,457,669	100.8%	Yes	Contractor behind schedule but continuing to work. Liquidated Damages being assessed.
58	B14314-12-000-0	NHSTP-0075-03(203)	610870-	I-75/SR 401 - 1.029 MI INTERCHANGE CNST	Gordon	6	7/23/2015	103.43%	No	\$18,237,444	\$17,170,386	\$16,357,353	95.3%	Yes	Contractor behind schedule but continuing to work.
59	B14384-12-000-0	STPIM-0075-03(210)	610930-	SR 136 - INTERCHANGE RCNST & WIDENING	Gordon	6	11/30/2015	92.39%	Yes	\$16,146,982	\$16,007,730	\$14,036,148	87.7%	Yes	On time and within budget to complete.
60	B14388-12-000-0	STP00-0179-01 (010)	621440-	SR 113 - RCNST & WIDENING	Bartow	6	9/30/2015	97.08%	Yes	\$12,411,531	\$12,603,511	\$11,616,556	92.2%	Yes	On time and within budget to complete.
61	B14472-13-000-0	NHS00-0000-00(931)	0000931	I-75 - INTERCHANGE RECONSTRUCTION	Whitfield	6	6/30/2016	67.86%	Yes	\$37,316,577	\$35,751,902	\$16,248,272	45.4%	Yes	On time and within budget to complete.
62	B14590-13-000-0	IM000-0075-03(189)	610750-	I-75/SR 401 & SR 156-INTERCHANGE WIDENING RCNS	Gordon	6	5/31/2016	68.62%	Yes	\$28,688,740	\$27,765,789	\$14,397,888	51.9%	Yes	On time and within budget to complete.
63	B14619-13-000-0	STP00-0012-01(071)	621350-	SR 20 - WIDENING AND RELOCATION	Bartow	6	5/31/2016	62.20%	Yes	\$20,552,835	\$17,489,106	\$6,562,645	37.5%	Yes	On time and within budget to complete.



Attachment B

Georgia DOT Active Construction Projects Over \$10 Million in Value  
SB 200 Report for Calendar Year 2015

Project Count	Contract Id	Federal/State Project No	GDOT PI NO	Project Description	County	DOT District	Completion Date	Percentage of Time Used	Construction On Schedule for Completion Date	Project Allotment	Project Current Amt	Earnings To Date	Project Pct Complete (Earnings)	Within Budget	Project Schedule & Budget Summary
64	B14815-14-000-0	STP00-0002-00(626)	0002626	US 41/SR 3 - INTERCHANGE RECON	Bartow	6	4/30/2018	20.06%	Yes	\$36,603,269	\$32,794,908	\$3,419,632	10.4%	Yes	On time and within budget to complete.
65	B14117-11-000-0	BHFST-0001-05(024)	720125-	US 41/SR 3 (NORTHSIDE PKWY) - 0.558 MI BRIDGE REPLACEMENT	CobbFulton	7	5/31/2017	66.50%	Yes	\$13,505,507	\$13,000,638	\$11,413,437	87.8%	Yes	On time and within budget to complete.
66	B14431-12-000-0	NHS00-0001-00(917)	0001917	LEE ROAD (CR 317) - WIDENING & RECNS	Douglas	7	10/31/2015	94.05%	Yes	\$19,348,765	\$17,627,232	\$14,638,491	83.0%	Yes	On time and within budget to complete.
67	B14615-13-000-0	STP00-0001-05(047)	721152-	US 41/SR3 - WIDENING AND RECON	Cobb	7	12/17/2017	36.04%	Yes	\$13,574,463	\$14,412,229	\$6,263,025	43.5%	Yes	On time and within budget to complete.
68	B14676-13-000-0	BHNLB-9073-00(016)	752560-	SPRING STREET- BRIDGE REHAB	Fulton	7	10/31/2016	41.00%	Yes	\$16,030,750	\$15,234,747	\$10,156,124	66.7%	Yes	On time and within budget to complete.
69	B14725-14-000-1	M004620	M004620	I-285/SR 407 - CONCRETE SLAB REPLACEMENTS	Cobb	7	9/30/2016	54.25%	Yes	\$13,613,785	\$19,346,185	\$13,760,761	71.1%	No	Over budget due to additional broken/busted concrete slabs.
70	B14749-14-000-0	STP00-0222-01(001)	752300-	I-285/SR 407 - INTERCHANGE RECONSTRUCTION	Cobb	7	9/30/2017	37.12%	Yes	\$42,990,292	\$41,029,296	\$7,015,872	17.1%	Yes	On time and within budget to complete.
71	B14343-14-000-1	STP00-0004-00(166)	0004166	SR 3 NORTHSIDE DRIVE	Fulton	7	1/1/2018	20.88%	Yes	\$25,861,411	\$23,888,716	\$9,862,154	41.3%	Yes	On time and within budget to complete.
72	B14761-14-000-0	CSSTP-0006-00(900)	0006900	SR 92 - CONSTRUCTION & WIDENING (PHASES I, II, III)	Douglas	7	5/31/2020	16.01%	Yes	\$29,674,912	\$23,748,875	\$6,550,193	27.6%	Yes	On time and within budget to complete.
73	B14761-14-000-0	CSSTP-0006-00(901)	0006901	SR 92 - CONSTRUCTION & WIDENING (PHASES I, II, III)	Douglas	7	5/31/2020	16.01%	Yes	\$16,662,035	\$15,406,454	\$2,972,956	19.3%	Yes	On time and within budget to complete.
74	B14761-14-000-0	STP00-0186-01(011)	720970-	SR 92 - CONSTRUCTION & WIDENING (PHASES I, II, III)	Douglas	7	5/31/2020	16.01%	Yes	\$22,917,853	\$20,677,232	\$6,725,932	32.5%	Yes	On time and within budget to complete.
75	B14810-14-000-0	STP00-0001-00(817)	0001817	CW GRANT PKWY (CR 1516) - WIDENING & RECONSTRUCTION	Clayton	7	6/30/2018	13.44%	Yes	\$41,281,246	\$33,625,010	\$5,611,596	16.7%	Yes	On time and within budget to complete.
Totals										\$2,304,417,641	\$2,236,660,628	\$1,027,262,173	45.9%		

Attachment C Georgia DOT Active Projects Under Design Greater than \$10 Million in Value (Includes All Phases)  
SB 200 Report for STIP Fiscal Years 2016-2019

Project Count	Project ID	Project Manager Name	Primary County	Description	Primary Work Type	Latest Cost Est Total	Proposed ROW Fiscal Year	Proposed CST Fiscal Year
1	0000297	Vanhouten, Kevin B	UPSON	SR 3/US 19 FM CR 73/EAST-WEST COUNTY RD TO CR 8/ATWATER RD	Roadway Project	\$27,382,700	Authorized	2018
2	0000379	VanMeter, Darryl	FULTON	I-285/I-20 WEST: RECONSTRUCT INTERCHANGE	Interchange	\$297,771,781	2019	Beyond STIP
3	0000411	Tate, Anthony	WALTON	SR 83 CONN FROM SR 11 TO SR 83	Roadway Project	\$17,058,740	2016	2019
4	0000425	Robinson, Charles	HALL	I-985 NEW INTERCHANGE N OF SR 13 CROSSOVER NEAR MARTIN RD	Interchange	\$45,117,973	2016	2017
5	0000473	Thompson, Sonja	DOUGHERTY	SR 133 FM N OF CR 459/COUNTY LINE RD TO N OF CR 540/HOLLY DR	Widening	\$51,829,102	2018	2019
6	0000475	Thompson, Sonja	WORTH	SR 133 FM N OF SR 112 TO N OF CR 459/COUNTY LINE ROAD	Widening	\$24,290,996	2018	2019
7	0000519	Thompson, Sonja	WORTH	SR 133 FM N OF COLQUITT COUNTY LINE TO N OF SR 112	Widening	\$38,676,573	2019	Beyond STIP
8	0000520	Thompson, Sonja	COLQUITT	SR 133 FM S OF SR 35/US 319 TO N OF COLQUITT COUNTY LINE	Widening	\$85,475,631	2018	Beyond STIP
9	0000544	Edwards, Cassius	BROOKS	SR 133 FM CR 10/PAULINE CH RD TO CR 1/OLD QUITMAN ADEL RD	Widening	\$36,852,362	Authorized	2016
10	0000545	Edwards, Cassius	BROOKS	SR 133 FM CR 1/OLD QUITMAN ADEL RD/BROOKS TO CR 256/COLQUITT	Widening	\$40,228,177	Authorized	2016
11	0000546	Edwards, Cassius	COLQUITT	SR 133 FROM CR 256/OLD BERLIN ROAD TO CR 388/HAWTHORNE DRIVE	Widening	\$32,254,118	Authorized	2016
12	0000762	Ghazi, Aghdas Sootodeh	LOWNDES	I-75 FM N OF SR 133 TO COOK COUNTY LINE - PHASE II	Interchange	\$58,417,789	Authorized	2017
13	0000784	Clowers, Marlo	FULTON	I-285 @ SR 400; INC CD LNS FM ROSWELL RD TO ASHFORD DUNWOODY	Interchange	\$162,750,661	2016	Beyond STIP
14	0000821	Moyer, David	CHARLTON	SR 40 FM SR 40 CONN TO 0.36 MI EAST OF CR 82/MAY BLUFF ROAD	Widening	\$11,060,324	2017	2019
15	0000835	Vanhouten, Kevin B	BIBB	CR 727/JEFFERSONVILLE RD @ NORFOLK SOUTHERN RAILROAD	Railroad Crossing	\$14,829,055	Not Required	2019
16	0000837	Saxon, Brad	LOWNDES	CR 784/JERRY JONES RD FM GORNT0 RD TO OAK STREET	Widening	\$14,917,825	2018	Beyond STIP
17	0001036	Edwards, Cassius	GLYNN	SR 99 FROM SR 27/US 25/US 341 TO I-95	Widening	\$30,527,781	Beyond STIP	Beyond STIP
18	0001570	Dilligard, Stevonn J.	THOMAS	SR 3/US 19 FROM CR 219/SUNSET DRIVE TO CR 159/BIG CREEK ROAD	Turn Lanes	\$13,022,708	Not Required	2018
19	0001572	Dilligard, Stevonn J.	WORTH	SR 300/US 19 MEDIAN TURN LANES FROM DOUGHERTY CO TO WARWICK	Turn Lanes	\$10,677,166	2016	2018
20	0002669	Samu, Sam	DEKALB	UPGRADE TRAFFIC SIGNALS @ 40 LOCATIONS IN DEKALB CO	Signals	\$11,386,958	2016	2017
21	0002862	Burney, Cynthia	CHEROKEE	SR 20 FROM SR 369/CHEROKEE TO SR 371/FORSYTH	Widening	\$82,072,561	Beyond STIP	Beyond STIP
22	0002923	Moyer, David	CHATHAM	SR 25 CONN/BAY STREET FROM I-516 TO THE BAY STREET VIADUCT	Widening	\$23,399,553	Authorized	2016
23	0002981	Shelby, Albert	QUITMAN	SR 50 FM W OF SR 39/SR 27 TO E OF SR 39 EAST OF GEORGETOWN	Widening	\$38,098,784	Beyond STIP	Beyond STIP
24	0003626	White, Davida	HALL	SARDIS RD CONN FM SR 60 TO SARDIS RD NEAR CHESTATEE RD	Widening	\$62,496,155	2018	Beyond STIP
25	0003681	Burney, Cynthia	CHEROKEE	SR 20 FROM I-575 TO SR 369	Widening	\$73,609,550	2019	Beyond STIP
26	0003682	Burney, Cynthia	FORSYTH	SR 20 FROM SR 371 TO SR 400	Widening	\$200,458,686	Beyond STIP	Beyond STIP
27	0004428	Emmanuel, Peter B.	DOUGLAS	CR 817/LEE RD FM I-20 TO SR 92/FAIRBURN RD - PHASE II - GRTA	Widening	\$29,680,537	Authorized	2016
28	0004915	Simmons, Jeff	BARTOW	SR 140 FM SR 53/FLOYD TO 0.3 MI W OF OOTHKALOOGA CRK/BARTOW	Widening	\$73,727,316	Authorized	2016
29	0006048	Fernandez, Ryan	COBB	I-285 WEST @ SR 280	Interchange	\$25,595,514	2018	2019
30	0006049	Brown, Chandria	COBB	SR 360 FROM NEW MACLAND ROAD/COBB TO SR 120/PAULDING	Widening	\$62,266,914	Authorized	2017
31	0006252	Wilkinson, Eric Ryan	PUTNAM	SR 44 FROM SR 24/US 441 TO CR 54/LINGER LONGER ROAD	Widening	\$77,452,215	2016	Beyond STIP
32	0006253	Wilkinson, Eric Ryan	GREENE	SR 44 FROM CR 54/LINGER LONGER RD TO EAST GREENSBORO BYPASS	Widening	\$71,484,862	2016	Beyond STIP
33	0006327	Troup, Marshall	BARROW	WEST WINDER BYP FM CR 325/MATTHEWS SCHOOL RD TO SR 211- PH I	Widening	\$42,242,429	2016	2018
34	0006328	Ghazi, Aghdas Sootodeh	CHATHAM	BRAMPTON ROAD CONN FROM SR 21/SR 25 TO SR 21 SPUR	Roadway Project	\$43,300,230	2017	2018



Attachment C

Georgia DOT Active Projects Under Design Greater than \$10 Million in Value (Includes All Phases)

SB 200 Report for STIP Fiscal Years 2016-2019

Project Count	Project ID	Project Manager Name	Primary County	Description	Primary Work Type	Latest Cost Est Total	Proposed ROW Fiscal Year	Proposed CST Fiscal Year
35	0006436	Franks, Kenneth	MCDUFFIE	THOMSON WEST BYPASS FM THREE POINTS RD TO E OF SR 17 - TIA	Roadway Project	\$16,987,900	Authorized	2016
36	0006439	White, Davida	GWINNETT	SR 10/US 78 @ SR 124; INC HENRY CLOWER BLVD	Intersection Improvement	\$32,509,031	Authorized	2017
37	0006700	Wright, Michelle O.	EFFINGHAM	EFFINGHAM PKWY FM CR 156/BLUE JAY/EFFINGHAM TO SR 30/CHATHAM	Roadway Project	\$47,539,976	2017	Beyond STIP
38	0006857	Black, Perry	PAULDING	SR 92 FROM COBB COUNTY LINE TO CR 73/OLD BURNT HICKORY ROAD	Widening	\$21,081,780	2017	Beyond STIP
39	0006862	Black, Perry	COBB	SR 92 FROM SR 3/US 41 TO GLADE ROAD	Widening	\$26,619,169	2016	2018
40	0006866	Black, Perry	COBB	SR 92 FROM PAULDING COUNTY LINE TO SR 3/US 41	Widening	\$18,133,929	2017	Beyond STIP
41	0006925	Shelby, Albert	GWINNETT	SUGARLOAF PARKWAY EXT FM PEACHTREE INDUSTRIAL BLVD TO SR 20	Roadway Project	\$141,363,629	2017	LOCL
42	0007040	Ford, Clinton B.	LINCOLN	SR 43 @ LITTLE RIVER @ LINCOLN/MCDUFFIE COUNTY LINE	Bridges	\$14,247,290	Authorized	2016
43	0007044	Banks, Justin	MERIWETHER	SR 85 @ CS 811/LANE STREET IN MANCHESTER	Bridges	\$11,777,101	2019	Beyond STIP
44	0007050	Ford, Clinton B.	PULASKI	SR 26 @ OCMULGEE RIVER IN HAWKINSVILLE	Bridges	\$13,188,651	2016	2016
45	0007057	Shelby, Albert	WARREN	SR 16 @ SHORT CREEK	Bridges	\$12,782,692	2019	Beyond STIP
46	0007259	Ghazi, Aghdas Sootodeh	CHATHAM	JIMMY DELOACH PARKWAY @ SR 17/SR 26 - INTERCHANGE	Interchange	\$30,884,439	Authorized	2018
47	0007319	Fernandez, Ryan	HALL	SR 347/FRIENDSHIP RD FM MCEVER RD TO LAKE LANIER - PHASE II	Widening	\$19,164,227	2016	2017
48	0007386	Dilligard, Stevonn J.	LOWNDES	I-75 @ CR 274/LAKE PARK-BELLVILLE ROAD - PHASE II	Interchange	\$30,759,768	2018	2019
49	0007414	Moyer, David	CAMDEN	CR 90/COLERAIN ROAD FM W OF I-95 TO E OF KINGS BAY ROAD	Widening	\$32,350,958	Authorized	2018
50	0007494	Word, Micheal	BARTOW	CS 1054/DOUTHIT FERRY RD FM OLD ALABAMA RD TO SR 61/SR 113	Widening	\$19,108,411	2016	Beyond STIP
51	0007526	White, Davida	FULTON	SR 400 @ MCGINNIS FERRY RD; INC WIDENING & AUXILIARY LANES	Interchange	\$47,657,922	2017	2019
52	0007535	White, Davida	GWINNETT	CONNECTOR ST FROM HEWATT RD TO BRITT DR; INC PARKWOOD RD	Roadway Project	\$13,953,083	Authorized	2018
53	0007691	Emmanuel, Peter B.	PAULDING	SR 92 FM CS 611/MALONE RD TO CS 519/NEBO RD-SEGMENT 1-PH IV	Widening	\$77,983,451	Authorized	2017
54	0007692	Simmons, Jeff	PAULDING	SR 92 FROM SR 120 TO CR 473/CEDARCREST ROAD	Widening	\$58,465,786	2018	Beyond STIP
55	0007836	Law, Nicole S.	CHEROKEE	SR 20 FROM I-75/BARTOW TO I-575/CHEROKEE	Widening	\$204,456,522	Beyond STIP	Beyond STIP
56	0007838	Tate, Anthony	FULTON	SR 9 FROM WINDWARD PKWY TO FORSYTH COUNTY LINE	Widening	\$31,211,329	2018	Beyond STIP
57	0007841	Emmanuel, Peter B.	FULTON	I-85 @ SR 74/SENOIA ROAD	Interchange	\$36,923,028	2017	Beyond STIP
58	0007844	Tate, Anthony	FORSYTH	SR 9 FROM CR 458/MCFARLAND ROAD TO SR 371	Widening	\$19,962,297	2018	Beyond STIP
59	0007855	Njoku, Iheanachor	HENRY	SR 42 FROM DOWNTOWN MCDONOUGH TO SR 138	Widening	\$88,593,328	Beyond STIP	Beyond STIP
60	0007856	Vanhouten, Kevin B	HENRY	SR 155 FROM I-75 TO SR 42/US 23	Widening	\$19,856,046	2019	Beyond STIP
61	0008355	Wilkinson, Eric Ryan	RICHMOND	SR 121/US 25 FM CR 1513/BROWNS ROAD TO CR 1503/TOBACCO ROAD	Widening	\$42,607,350	Beyond STIP	Beyond STIP
62	0008356	Troup, Marshall	RICHMOND	SR 4/US 1 FM CR 1503/TOBACCO ROAD TO CR 95/MEADOWBROOK DRIVE	Widening	\$56,121,295	Beyond STIP	Beyond STIP
63	0008357	Tate, Anthony	FORSYTH	SR 9 FROM SR 371 TO SR 141	Widening	\$29,005,316	2018	Beyond STIP
64	0008429	Curtis, Dylan	BARROW	SR 316/US 29 @ SR 81	Interchange	\$28,117,118	2016	2017
65	0008430	Curtis, Dylan	BARROW	SR 316/US 29 @ SR 11	Interchange	\$14,680,851	2016	Beyond STIP
66	0008431	Curtis, Dylan	BARROW	SR 8/SR 316/US 29 @ SR 53	Interchange	\$15,005,860	2017	2018
67	0008434	Shelby, Albert	JACKSON	SR 53 FROM I-85 TO CR 167/TAPP WOOD ROAD	Widening	\$38,742,000	Beyond STIP	Beyond STIP
68	0008619	Shelby, Albert	COWETA	SR 154 FROM SR 14/US 29 TO SR 54	Widening	\$17,455,000	2019	Beyond STIP

# Attachment C Georgia DOT Active Projects Under Design Greater than \$10 Million in Value (Includes All Phases) SB 200 Report for STIP Fiscal Years 2016-2019

Project Count	Project ID	Project Manager Name	Primary County	Description	Primary Work Type	Latest Cost Est Total	Proposed ROW Fiscal Year	Proposed CST Fiscal Year
69	0008666	Moyer, David	CAMDEN	KINGSLAND BYPASS FROM CR 61/VACUNA ROAD TO W OF I-95	Widening	\$24,343,679	2017	Beyond STIP
70	0008680	Franks, Kenneth	WARREN	I-20 FRONTAGE RD FM CR 187/RIDGE RD TO SR 80 -PHASE II - TIA	Frontage Roads	\$13,262,000	2017	2019
71	0009323	Njoku, Iheanachor	COWETA	I-85 @ CR 103/POPLAR ROAD - NEW INTERCHANGE	Interchange	\$52,029,341	Authorized	2016
72	0009397	Curtis, Dylan	FULTON	BELT LINE CORRIDOR FROM UNIVERSITY AVE TO ALLENE AVE	Bicycle/Ped. Facility	\$106,781,322	2016	2017
73	0009861	Vanhouten, Kevin B	BIBB	SR 11/SR 49 @ROCKY CRK &OVERFLOW & @TOBESOFKEE CRK &OVERFLOW	Bridges	\$19,058,726	2016	2018
74	0010212	Heng, Steven	HALL	SR 53 WB @ CHATTAHOOCHEE RIVER	Bridges	\$19,050,250	2019	Beyond STIP
75	0010297	Dilligard, Stevonn J.	LOWNDES	I-75 @ SR 31 - PHASE II	Interchange	\$28,254,234	2017	2018
76	0010418	Harris, Roxanne	FULTON	SR 120 FM CR 119/STATE BRIDGE RD TO CR 65/JONES BRIDGE RD	Widening	\$14,518,524	2016	2018
77	0010554	Troup, Marshall	BARROW	WEST WINDER BYP FM SR 316 TO CR 325/MATTHEWS SCHOOL RD-PH II	Widening	\$23,201,382	2017	Beyond STIP
78	0010555	Troup, Marshall	BARROW	WEST WINDER BYP @ SR 316 - NEW INTERCHANGE - PH III	Interchange	\$20,307,141	2017	Beyond STIP
79	0010571	James, Cleopatra	DOUGHERTY	WESTOVER BLVD FROM ALBANY MALL TO LEDO ROAD	Roadway Project	\$16,020,487	2018	2019
80	0010821	Fernandez, Ryan	DOUGLAS	SR 6 FROM I-20 WB TO SR 6 SPUR - TRUCK FRIENDLY LANES	Minor Widen & Resurf	\$38,649,794	2019	Beyond STIP
81	0010844	Franks, Kenneth	WARREN	I-20 FRONTAGE RD FM CADLEY ROAD TO RIDGE ROAD - PH I - TIA	Frontage Roads	\$12,602,311	LOCL	2017
82	0011409	Franks, Kenneth	RICHMOND	GREEN ST/TELFAIR ST FROM 15TH ST TO EAST BOUNDARY ST - TIA	Sidewalks	\$19,233,219	Authorized	2016
83	0011688	Ghazi, Aghdas Sootodeh	WARE	SR 158 @ SATILLA RIVER; OVERFLOW & FULLWOOD CREEK	Bridges	\$12,807,608	2017	2018
84	0012659	Wright, Michelle O.	BRYAN	I-95 @ CR 90/BELFAST SIDING ROAD - NEW INTERCHANGE	Interchange	\$20,584,105	2016	2018
85	0012698	Robinson, Charles	GWINNETT	I-85 @ SR 324	Interchange	\$18,324,177	2017	2019
86	0012700	Ford, Clinton B.	BIBB	I-75 NB FROM SR 19 TO I-16 - PHASE II	Roadway Project	\$28,655,114	Not Required	2017
87	0012757	Hoening, Andrew	CHATHAM	I-16 FROM I-95 TO I-516	Widening	\$71,000,000	Not Required	Beyond STIP
88	0012758	Hoening, Andrew	CHATHAM	I-16 @ I-95 - INTERCHANGE RECONSTRUCTION	Interchange	\$72,891,400	2019	Beyond STIP
89	0012774	Fernandez, Ryan	COBB	I-75 @ CR 7958/WINDY HILL RD - DIVERGING DIAMOND INTERCHANGE	Interchange	\$18,137,881	Authorized	2016
90	0012788	Harris, Roxanne	FULTON	SR 120 FROM CS 79/PARSON ROAD TO SR 141	Bicycle/Ped. Facility	\$14,991,673	2016	Beyond STIP
91	0012877	Emmanuel, Peter B.	DOUGLAS	GREENWAY TRAIL FM BOUNDARY WATERS PARK TO SWEETWATER CK PARK	Bicycle/Ped. Facility	\$11,670,000	2017	2018
92	0012904	Shelby, Albert	ELBERT	SR 17 FROM SR 72 TO CR 309/DEEP CREEK ROAD	Widening	\$26,863,000	Beyond STIP	Beyond STIP
93	0013104	White, Davida	GWINNETT	I-85 @ CR 5640/MCGINNIS FERRY - NEW INTERCHANGE	Interchange	\$19,300,000	2018	Beyond STIP
94	0013158	Shelby, Albert	TURNER	I-75 @ CR 252/INAH ROAD	Interchange	\$70,356,700	Beyond STIP	Beyond STIP
95	0013164	Shelby, Albert	ELBERT	SR 17 FM N OF CR 50/SAM TATE RD TO N OF CR 278/ROBINWOOD LN	Widening	\$52,439,100	Beyond STIP	Beyond STIP
96	0013195	Banks, Justin	COWETA	SR 14/US 29 @ CR 43/HERRING ROAD; INC CSX BRIDGE	Roadway Project	\$12,035,887	2018	2019
97	0013248	Anderson, Bruce G.	RICHMOND	SR 10 FROM OLD LOUISVILLE ROAD/COLUMBIA TO SR 223/RICHMOND	Widening	\$47,000,000	2018	Beyond STIP
98	0013301	Shelby, Albert	FRANKLIN	SR 17 RELOC FROM SR 51 TO SR 327	Roadway Project	\$45,622,400	Beyond STIP	Beyond STIP
99	0013302	Shelby, Albert	HART	SR 17 FROM SR 172 TO ROYSTON BYPASS	Widening	\$58,045,000	Beyond STIP	Beyond STIP
100	0013311	Shelby, Albert	ELBERT	SR 17 FROM VINSON ROAD/WILKES TO N OF SAM TATE ROAD/ELBERT	Widening	\$44,900,000	Beyond STIP	Beyond STIP
101	0013369	Decker, Sue Anne	FORSYTH	SR 400 @ SR 369	Operational Improvement	\$22,845,556	2017	2018
102	0013372	Shelby, Albert	FRANKLIN	LAVONIA BYPASS FM SR 327 TO SR 17 @ 0.28 MI SOUTH OF I-85	Roadway Project	\$37,173,054	Beyond STIP	Beyond STIP

# Attachment C Georgia DOT Active Projects Under Design Greater than \$10 Million in Value (Includes All Phases) SB 200 Report for STIP Fiscal Years 2016-2019

Project Count	Project ID	Project Manager Name	Primary County	Description	Primary Work Type	Latest Cost Est Total	Proposed ROW Fiscal Year	Proposed CST Fiscal Year
103	0013525	Law, Nicole S.	CHEROKEE	CR 770/BELLS FERRY RD FM N VICTORIA RD TO N OF LITTLE RIVER	Bridges	\$12,498,245	2017	Beyond STIP
104	0013526	Law, Nicole S.	CHEROKEE	CR 770/BELLS FERRY RD FROM S FORK WAY TO N OF N VICTORIA RD	Widening	\$33,628,111	2017	Beyond STIP
105	0013531	Njoku, Iheanachor	HENRY	SR 20 FROM I-75 TO CS 721/PHILLIPS DRIVE	Widening	\$16,119,330	2018	2019
106	0013533	Bailey, Kevin Matthew	FLOYD	SR 101 @ SR 20 0.22 MI N OF CS 1488/LOMBARDY WAY IN ROME	Interchange	\$14,886,596	2019	Beyond STIP
107	0013546	Clowers, Marlo	FULTON	I-285 @ SR 400; INC CD LANES & ABERNATHY ROAD INTERCHANGE	Interchange	\$876,820,000	Not Required	2016
108	0013572	Shelby, Albert	ELBERT	SR 17 FROM CR 309/DEEP CREEK ROAD TO SR 172	Roadway Project	\$41,462,000	Beyond STIP	Beyond STIP
109	0013578	Shelby, Albert	LAURENS	SR 31/US 441 FROM SR 46 TO CR 272/DAVID MULLIS ROAD	Widening	\$49,173,000	Beyond STIP	Beyond STIP
110	0013590	Shelby, Albert	CATOOSA	SR 146 FROM SR 1/US 27 TO CR 553/LAKEVIEW ROAD	Widening	\$34,237,514	2019	Beyond STIP
111	0013599		MCINTOSH	SR 25 @ DARIEN RIVER IN DARIEN	Bridges	\$10,500,000	2018	Beyond STIP
112	0013613	Wilkinson, Eric Ryan	OCONEE	SR 24/US 441 FM N OF APALACHEE RIVER TO WATKINSVILLE BYPASS	Widening	\$76,917,129	Beyond STIP	Beyond STIP
113	0013614	Wilkinson, Eric Ryan	MORGAN	SR 24/US 441 FM PUTNAM CO LN TO N OF CR 121/PIERCE DAIRY RD	Widening	\$42,307,099	2018	Beyond STIP
114	0013615	Wilkinson, Eric Ryan	PUTNAM	SR 24/US 441 FROM EATONTON BYPASS TO MORGAN COUNTY LINE	Widening	\$46,877,166	2019	Beyond STIP
115	0013616	Wilkinson, Eric Ryan	WASHINGTON	SR 15 BYPASS FROM SR 15 TO SR 242	Roadway Project	\$24,699,290	2019	Beyond STIP
116	0013617	Wilkinson, Eric Ryan	MORGAN	SR 24 FM MADISON BYPASS/MORGAN TO N OF APALACHEE RVR/OCONEE	Widening	\$60,769,860	2019	Beyond STIP
117	0013618	Troup, Marshall	JASPER	MONTICELLO NE BYPASS FROM SR 16 TO SR 83	Roadway Project	\$13,718,670	2017	2019
118	0013619	Vanhouten, Kevin B	BUTTS	SR 16 FROM I-75 TO JACKSON CITY LIMITS	Widening	\$37,051,000	Beyond STIP	Beyond STIP
119	0013628	Troup, Marshall	ROCKDALE	SR 162 FROM CR 55/FLAT SHOALS RD TO CR 34/OLD SALEM RD-GRTA	Widening	\$29,873,234	2016	Beyond STIP
120	0013702	Harris, Roxanne	PAULDING	SR 61 FM S OF CR 467/DALLAS NEBO RD TO SR 6	Widening	\$59,960,570	2019	Beyond STIP
121	0013703	Anderson, Bruce G.	RICHMOND	CR 1515/WILLIS FOREMAN ROAD FROM SR 4/US 1 TO SR 121/US 25	Widening	\$35,338,750	Beyond STIP	Beyond STIP
122	0013704	Chastain, Daniel	COLUMBIA	CR 92/HARDY MCMANUS RD FM CR 1427/WILLIAM FEW PKWY TO SR 28	Widening	\$18,996,258	2016	Beyond STIP
123	110600-	Hoenig, Andrew	GWINNETT	I-85 FM N OF OLD PEACHTREE TO HAMILTON MILL RD-MANAGED LANES	Managed Lanes	\$188,414,761	Not Required	2016
124	110610-	Hoenig, Andrew	GWINNETT	I-85 FM N OF CR 134/HAMILTON MILL ROAD TO N OF SR 211	Widening	\$93,780,000	Not Required	2018
125	121690-	Tate, Anthony	FORSYTH	SR 9 FROM N OF SR 141 TO N OF SR 20	Widening	\$37,586,193	2017	Beyond STIP
126	122012-	Heng, Steven	FORSYTH	SR 369 @ CHATTAHOOCHEE RIVER/LAKE LANIER	Bridges	\$17,248,778	2016	2018
127	122064-	Robinson, Charles	HALL	SR 11 @ CHATTAHOOCHEE RIVER	Bridges	\$13,417,111	2016	2017
128	122066-	Robinson, Charles	HALL	SR 11 @ EAST FORK LITTLE RIVER	Bridges	\$13,055,925	2016	2017
129	122090-	Robinson, Charles	RABUN	SR 15/US 441 FM NORTH CL/CLAYTON TO NORTH CAROLINA LINE	Widening	\$69,619,402	2016	2019
130	122150-	Tate, Anthony	HALL	SR 11/US 129 FM SR 332 @ TALMO/JACKSON TO SR 323/HALL	Widening	\$68,935,372	Authorized	2016
131	122900-	Adewale, Steve	UNION	SR 515/2/US 76 FM E BLAIRSVILLE TO YOUNG HARRIS BP@CL/CORR A	Widening	\$84,140,452	2017	Beyond STIP
132	132950-	Curtis, Dylan	HALL	SR 13 FROM CS 1120/SAWNEE AVE/GWINNETT TO SR 347/HALL	Widening	\$22,231,344	Authorized	2016
133	210327-	Lewis, Robert	RICHMOND	I-20 @ SAVANNAH RIVER	Bridges	\$43,356,331	Not Required	2018
134	220680-	Troup, Marshall	RICHMOND	SR 4 FROM MILLEDGEVILLE ROAD TO GOVERNMENT STREET - TIA	Widening	\$25,304,029	2016	Authorized
135	222120-	Chastain, Daniel	JEFFERSON	SR 4/US 1 FM WADLEY BYPASS TO LOUISV'LE BYP/INCL BRIDGES	Widening	\$39,015,527	2017	Beyond STIP
136	222150-	Chastain, Daniel	JEFFERSON	SR 4/US 1/LOUISVILLE BYP FM SR 4 BU/US 1BU TO CR 325 - TIA	Widening	\$17,807,389	2017	2019



Attachment C   Georgia DOT Active Projects Under Design Greater than \$10 Million in Value (Includes All Phases)  
SB 200 Report for STIP Fiscal Years 2016-2019

Project Count	Project ID	Project Manager Name	Primary County	Description	Primary Work Type	Latest Cost Est Total	Proposed ROW Fiscal Year	Proposed CST Fiscal Year
137	222160-	Chastain, Daniel	JEFFERSON	SR 4/US 1 FM LOUISVILLE BYP @ CR 325 TO CR 138/MENNONITE CH	Widening	\$28,442,513	2017	Beyond STIP
138	222170-	Chastain, Daniel	JEFFERSON	SR 4/US 1 FM CR 138 NORTH TO SR 88/FALL LINE FREEWAY	Widening	\$34,637,585	2017	Beyond STIP
139	222260-	Troup, Marshall	WILKES	SR 17 FM N WASHINGTON BYP TO PASSING LN SO OF CR 193 (EXC)	Widening	\$55,441,534	Beyond STIP	Beyond STIP
140	222410-	Anderson, Bruce G.	DODGE	SR 87/US 23 FM LOG CABIN/DODGE TO S OF SR 257/BLECKLEY-TIA	Widening	\$49,670,155	Authorized	2017
141	231210-	Troup, Marshall	NEWTON	SR 162 FROM CR 511/BROWN BRIDGE ROAD TO CR 34/OLD SALEM ROAD	Widening	\$26,140,968	2018	Beyond STIP
142	231450-	Wilkinson, Eric Ryan	BALDWIN	SR 49 FM JUST W. OF FELTON RD TO EAST OF MILLEDGEVILLE BYP	Widening	\$13,361,803	Authorized	2017
143	231630-	Chastain, Daniel	NEWTON	SR 12/US 278 FM COVINGTON CITY LIMITS TO E OF SR 142	Widening	\$11,837,920	Authorized	2017
144	242230-	Troup, Marshall	NEWTON	SR 142 FM I-20 TO ALCOVY RD IN COVINGTON	Widening	\$19,218,907	Authorized	2017
145	262027-	Anderson, Bruce G.	LAURENS	SR 31/US 441 FROM S OF SR 117 TO CR 354/PINEHILL ROAD	Widening	\$30,753,567	2017	Beyond STIP
146	311000-	Ford, Clinton B.	BIBB	I-16 FROM I-75 TO SR 87; INCL SR 87 INTERCHANGE - PHASE I	Widening	\$76,944,139	Authorized	2017
147	311410-	Ford, Clinton B.	BIBB	I-75 SB FROM SR 19 TO I-16 INTERCHANGE - PHASE III	Interchange	\$65,416,704	Authorized	2017
148	311665-	Smith, Adam	DOOLY	I-75 @ SR 27 - WIDEN BRIDGE & RAMPS	Interchange	\$21,868,113	Authorized	2016
149	321530-	Robinson, Merishia	HENRY	EAST-WEST 1-WAY PAIR FM W OF NS #718408K TO E OF HENRY ST	Realignment	\$16,141,455	Authorized	2017
150	321880-	Vanhouten, Kevin B	MERIWETHER	SR 41 @ CSX RAILROAD W OF WARM SPRINGS; INC DETOUR	Bridges	\$14,330,877	Authorized	2017
151	322050-	Vanhouten, Kevin B	HENRY	SR 42 FROM SR 138/HENRY TO I-675/CLAYTON	Widening	\$30,833,561	2018	Beyond STIP
152	322470-	Ford, Clinton B.	TWIGGS	SR 96 FM 0.48 W OF SR 87 TO S OF I-16	Widening	\$37,004,582	Authorized	2018
153	342080-	Vanhouten, Kevin B	BIBB	JEFFERSON'LE FM WALNUT CK-RECREATION & MILLER'LD TO BRISTOL	Widening	\$10,145,332	Authorized	2017
154	342970-	Vanhouten, Kevin B	HENRY	JONESBORO RD FM W OF SR 3/US 41/CLAYTON TO I-75/HENRY	Widening	\$81,200,078	2018	Beyond STIP
155	350730-	Ford, Clinton B.	MUSCOGEE	SR 982/TALBOTTON RD FROM 7TH AVE TO WOODRUFF RD/HILTON AVE	Widening	\$36,223,676	Authorized	2017
156	350796-	Vanhouten, Kevin B	MUSCOGEE	BUENA VISTA ROAD FM BROWN AVE SE TO ILLGES ROAD IN COLUMBUS	Widening	\$10,244,566	2017	2019
157	421345-	Dilligard, Stevonn J.	COFFEE	SR 32 FM W OF CR 296 EAST TO WEST CITY LIMITS OF DOUGLAS	Widening	\$28,285,573	2016	2019
158	431830-	Dilligard, Stevonn J.	COFFEE	SR 135 FM SR 31/US 441 EAST TO SR 32; INC RR SEPARATION	Widening	\$35,865,257	Authorized	2016
159	450200-	Saxon, Brad	LOWNDES	CR 138/NORTH FORREST STREET FROM CS 1428/PARK AVE TO SR 125	Widening	\$30,579,741	2018	Beyond STIP
160	521855-	Moyer, David	CHATHAM	SR 26 FROM I-516 TO CS 188/VICTORY DRIVE	Widening	\$19,281,421	2017	2019
161	522180-	Wright, Michelle O.	TOOMBS	SR 4/US 1 FM SR 56 TO SR 29; INC CLVT @ OPEN CREEK - TIA	Widening	\$23,586,846	2017	Beyond STIP
162	522200-	Wright, Michelle O.	TOOMBS	SR 4 FM CR 386/GREEN OAK RD TO SR 130/FISHER BAREFOOT HWY	Widening	\$63,618,454	2017	Beyond STIP
163	522460-	Moyer, David	BULLOCH	SR 67 FM I-16 TO STATESBORO BYPASS	Widening	\$37,604,862	2017	2019
164	522570-	Ghazi, Aghdas Sootodeh	LONG	SR 38 BYPASS FROM SR 38/US 84/LONG TO SR 119/LIBERTY	Roadway Project	\$22,784,955	2018	Beyond STIP
165	522780-	Bennett, J. Matt	WARE	SR 38/US 84 FM W OF CR 88/RUSKIN RD TO E OF CR 294/WADLEY RD	Widening	\$47,192,386	Authorized	2016
166	522790-	Ghazi, Aghdas Sootodeh	CHATHAM	JIMMY DELOACH PARKWAY EXTENSION FM I-16 TO SR 26/US 80	Roadway Project	\$30,580,743	Authorized	2018
167	532370-	Wright, Michelle O.	BRYAN	SR 144 EB FROM S OF CR 100 TO S OF CR 154	Widening	\$33,079,657	Authorized	2017
168	532650-	Edwards, Cassius	GLYNN	SR 25/US 17 FROM CR 372/YACHT DRIVE TO SR 99	Widening	\$35,767,756	2017	2019
169	610890-	Word, Micheal	WHITFIELD	I-75 INTERCHANGE @ CR 665/CARBONDALE ROAD; INC ROUNDABOUTS	Interchange	\$25,009,359	Authorized	2016
170	620490-	Law, Nicole S.	FANNIN	MCCAYSVILLE BYPASS FROM SR 5 TO TENNESSEE STATE LINE	Roadway Project	\$11,897,388	2018	Beyond STIP

Attachment C

Georgia DOT Active Projects Under Design Greater than \$10 Million in Value (Includes All Phases)

SB 200 Report for STIP Fiscal Years 2016-2019

Project Count	Project ID	Project Manager Name	Primary County	Description	Primary Work Type	Latest Cost Est Total	Proposed ROW Fiscal Year	Proposed CST Fiscal Year
171	621082-	Bailey, Kevin Matthew	CHATTOOGA	SR 1 FROM CR 329 TO N OF CR 325 @ SR 1/US 27	Widening	\$113,663,639	2017	2019
172	621340-	Law, Nicole S.	FANNIN	SR 5 FM SR 2/BLUE RIDGE N TO PROP MCCAYSVILLE BYP NR CR 138	Widening	\$50,116,636	2018	Beyond STIP
173	621410-	Word, Micheal	BARTOW	SR 113/OLD ALA RD RELOC FM SR 113 -PUMPKINVINE CK- TO CR 699	Widening	\$64,143,943	Authorized	2018
174	621490-	Simmons, Jeff	PICKENS	SR 53BU FM SR 515/APD TO CR 243/INDUSTRIAL BLVD	Widening	\$29,176,209	2018	2019
175	621530-	Bailey, Kevin Matthew	CATOOSA	SR 151 FM S OF ROLLINS IND PARK/HOLCOMB RD TO SR 2/US 41	Widening	\$50,803,159	Authorized	2016
176	621600-	Simmons, Jeff	FLOYD	S ROME BYP/US 27 FM SR 1 ALONG BOOZE MTN RD TO SR 101 @CR 96	Roadway Project	\$71,599,854	Authorized	2017
177	621720-	Simmons, Jeff	PAULDING	SR 92 FM NEBO RD S/HIRAM TO SR 120 INCL POWDER SPINGS CK;BRD	Widening	\$64,376,529	2018	Beyond STIP
178	631490-	Fernandez, Ryan	CARROLL	VILLA RICA BYP EXTEND W FM PROPOSED SR 61 BYPASS TO SR 101	Roadway Project	\$10,319,885	2017	2018
179	632760-	Bailey, Kevin Matthew	FLOYD	SR 101/DEAN AVE @ SR 1/SR 20/SR 53/US 411 IN ROME	Interchange	\$33,427,855	2018	Beyond STIP
180	661950-	Brown, Derrick M.	BARTOW	US 411 RELOC FM SR 3/US 41 TO I-75; INCL I-75 INTERCHANGE	Roadway Project	\$226,195,330	2017	Beyond STIP
181	662420-	Simmons, Jeff	FLOYD	SE ROME BYP FM SR 101 NE ON NEW LOC TO US 411; INC INTCH	Roadway Project	\$84,844,997	2016	Beyond STIP
182	662510-	Adewale, Steve	GORDON	SOUTH CALHOUN BYPASS FM SR 53 @ CR 13 EAST TO SR 53 @ CR 64	Roadway Project	\$52,192,769	Authorized	2016
183	713210-	Samu, Sam	CLAYTON	I-75 NB CD SYSTEM FROM SR 331 TO I-285	Ramp	\$41,185,760	2017	2018
184	721000-	Samu, Sam	GWINNETT	SR 120 FM PARSONS RD/FULTON TO PEACHTREE IND BLVD/GWINNETT	Widening	\$37,081,011	2018	Beyond STIP
185	721010-	Fisher, Carleton	FULTON	SR 9 FROM SR 120 TO CHATTAHOOCHEE RIVER IN ROSWELL	Widening	\$22,160,733	2018	Beyond STIP
186	721290-	DeJean, Darrell L.	CLAYTON	SR 85 FROM SR 279/FAYETTE TO CR 820/ROBERTS DR/CLAYTON	Widening	\$25,529,180	2018	Beyond STIP
187	721300-	Shelby, Albert	FULTON	SR 140 FROM MANSELL ROAD TO NR RANCHETTE ROAD	Widening	\$55,420,915	Beyond STIP	Beyond STIP
188	721440-	Robinson, Merishia	CLAYTON	SR 54 FM MCDONOUGH RD/FAYETTE NE TO SR 3/US 19/US 41/CLAYTON	Widening	\$53,839,775	Authorized	2017
189	721582-	Simmons, Jeff	ROCKDALE	SR 20/138 - RELOCATION OF OLD SALEM ROAD AWAY FROM I-20	Roadway Project	\$24,993,000	2018	2019
190	721790-	Emmanuel, Peter B.	FULTON	SR 9 FROM UPPER HEMBREE ROAD TO ACADEMY STREET	Roadway Project	\$25,494,836	2017	Beyond STIP
191	722030-	James, Xavier	CLAYTON	SR 3/US 19/US 41 FROM S OF CR 504/TARA RD TO S OF SR 54	Widening	\$30,182,390	2017	2019
192	731048-	Robinson, Merishia	ROCKDALE	I-20 @ SR 138/SR 20 INTERCHANGE RECONSTRUCTION & WIDENING	Interchange	\$48,646,058	2018	Beyond STIP
193	731865-	Black, Perry	COBB	SR 92 @ PROCTOR CREEK/LAKE ACWORTH IN SW ACWORTH	Bridges	\$11,559,848	2016	2018
194	742870-	DeJean, Darrell L.	CLAYTON	SR 920 FROM SR 54/FAYETTE TO SR 3/US 19/CLAYTON	Widening	\$61,190,619	2017	Beyond STIP
195	751420-	Robinson, Merishia	FULTON	JOHNSON FERRY FM FERRY DR TO HUNTING CRK RD;INC ROUNDABOUTS	Widening	\$14,148,142	2016	2017
196	751770-	DeJean, Darrell L.	CLAYTON	BATTLECREEK/MT ZION BLVD FM SOUTHLAKE PKWY TO SOMERTON DR	Widening	\$30,695,487	2016	Beyond STIP
197	751775-	DeJean, Darrell L.	CLAYTON	BATTLE CREEK RD FM VALLEY HILL RD TO SOUTHLAKE PKWY	Widening	\$20,417,860	2016	Beyond STIP
198	752015-	James, Xavier	FULTON	CS 1868/COURTLAND STREET @ CSX RR/MARTA/DECATUR STREET	Bridges	\$22,959,663	Authorized	2018
199	M003308	Law, Nicole S.	CARROLL	I-20 FROM SR 1/US 27 TO SR 61	Concrete Rehab	\$47,728,000	Not Required	2016
200	M005198	Mathews, Reid	FULTON	I-20 FROM SWEETWATER CREEK TO CS 3541/HILL STREET	Resurface & Maintenance	\$14,359,781	Beyond STIP	Beyond STIP
					Total	\$9,195,858,060		

**Georgia Department  
of Transportation**

Organizational  
Performance Management  
One Georgia Center  
600 West Peachtree Street  
Atlanta, GA 30308

**[www.dot.ga.gov](http://www.dot.ga.gov)**

