

**GEORGIA DEPARTMENT OF TRANSPORTATION  
OFFICE OF TRANSPORTATION DATA**

**STATEWIDE FUNCTIONAL CLASSIFICATION &  
URBAN AREA BOUNDARY UPDATE GUIDE**

**Georgia Department of Transportation  
Office of Transportation Data  
5025 New Peachtree Road  
Chamblee, Georgia 30341**

**[www.dot.ga.gov](http://www.dot.ga.gov) | [OTDCustomerService@dot.ga.gov](mailto:OTDCustomerService@dot.ga.gov)**

---

**FEBRUARY 2014**

## Contents

<b>OVERVIEW .....</b>	<b>3</b>
<b>URBAN AREA BOUNDARIES .....</b>	<b>3</b>
<b>DISCLAIMER .....</b>	<b>3</b>
<b>ACRONYMS AND ABBREVIATIONS .....</b>	<b>3</b>
<b>WHAT ARE FUNCTIONAL CLASSIFICATIONS?.....</b>	<b>4</b>
<b>FUNCTIONAL CLASSIFICATIONS .....</b>	<b>4</b>
<b>TYPES OF ROADWAY.....</b>	<b>4</b>
<b>FOR MORE INFORMATION .....</b>	<b>4</b>
<b>WHAT ARE URBAN AREA BOUNDARIES? .....</b>	<b>5</b>
<b>TYPES OF AREAS .....</b>	<b>5</b>
<b>BOUNDARIES OF URBAN CLUSTER AREAS .....</b>	<b>5</b>
<b>BOUNDARIES OF URBANIZED AREAS.....</b>	<b>5</b>
<b>FOR MORE INFORMATION .....</b>	<b>5</b>
<b>GEORGIA'S RURAL AND URBAN AREAS .....</b>	<b>6</b>
<b>GEORGIA RURAL AREAS .....</b>	<b>6</b>
<b>GEORGIA URBAN CLUSTER AREAS .....</b>	<b>6</b>
<b>GEORGIA URBANIZED AREAS .....</b>	<b>8</b>
<b>FOR MORE INFORMATION .....</b>	<b>8</b>
<b>RULES - ADJUSTING URBAN BOUNDARIES.....</b>	<b>9</b>
<b>URBAN AREA BOUNDARY STUDY .....</b>	<b>9</b>
<b>RULES.....</b>	<b>9</b>
<b>2010 URBANIZED AREA REVIEW AND UPDATE .....</b>	<b>10</b>
<b>2010 REVIEW OF HIGHWAY FUNCTIONAL CLASSIFICATION AND NATIONAL HIGHWAY     SYSTEMS IN URBANIZED AREAS.....</b>	<b>11</b>

## Overview

### Urban Area Boundaries

Every ten years, the United States (U.S.) Census Bureau identifies urban areas, based on new census population data.

On March 26, 2012, the U.S. Census Bureau released the 2010 urban areas, a list of the urbanized, urban cluster, urban, and rural areas.

The Federal Highway Administration (FHWA) will soon release guidance for adjusting urban area boundaries. After the FHWA releases this information, the Georgia Department of Transportation (GDOT) will launch a state-wide process of adjusting the urban areas identified in the 2010 U.S. Census.

Federal transportation legislation allows for the expansion of census-defined urban boundaries and the development of adjusted Urban Area boundaries for transportation planning purposes, through the cooperative efforts of state and local officials. The adjusted Urban Area boundaries must encompass the entire Census-designated urban area and are subject to approval by the Secretary of Transportation (23 USC 101(a)(36) -(37) and 49 USC 5302(a)(16) - (17)).

The GDOT Office of Planning will coordinate this process with:

- The Metropolitan Planning Organizations (MPO) for Urbanized Areas with a population 50,000 or greater.
- The Georgia Regional Commissions for the Small Urban Areas with a population 5,000 to 49,999.

### Disclaimer

The Georgia Department of Transportation (GDOT) makes no representation or warranties, implied or expressed, concerning the accuracy, completeness, reliability, or suitability for any particular purpose of this information and data contained within this document.

### Acronyms and Abbreviations

The following acronyms and abbreviations are used in the various documents on this website.

Acronym or Abbreviation	Definition
FC	Functional Classification
FHWA	Federal Highway Administration
FRED database	Database at GDOT Office of Transportation Data
GA	Georgia
GDOT	Georgia Department of Transportation
MPO	Metropolitan Planning Organization
OP	Office of Planning
OTD	Office of Transportation Data
UAB	Urban Area Boundary
US or U.S.	United States
USC	United States Code

## What Are Functional Classifications?

### Functional Classifications

Functional Classification (FC) is "the process by which streets and highways are grouped into classes, or systems, according to the character of service they are intended to provide.

Basic to this process is the recognition that individual roads and streets do not serve travel independently in any major way. Rather, most travel involves movement through a network of roads.

It becomes necessary then to determine how this travel can be channelized within the network in a logical and efficient manner. Functional classification defines the nature of this channelization process by defining the part that any particular road or street should play in serving the flow of trips through a highway network."

### Types of Roadway

A roadway can be functionally classified as:

Roadway Type	Definition
Arterial	These roadways provide mobility so traffic can move from one place to another quickly and safely.
Collector	These roadways link arterials and local roads and perform some of duties of each.
Local	These roadways provide access to homes, businesses, and other property



### For More Information

For more information, visit the U.S. Department of Transportation Federal Highway Administration website ([http://www.fhwa.dot.gov/planning/fcsec2\\_1.htm](http://www.fhwa.dot.gov/planning/fcsec2_1.htm)).

## What Are Urban Area Boundaries?

### Types of Areas

An area on a map is considered a rural, urban cluster, or urbanized area.

Area Types	Definition
Rural area	A rural area is an area designated by the Bureau of the Census as having: <ul style="list-style-type: none"><li>• a population of less than 5000</li></ul>
Urban cluster area	An urban cluster area is an area designated by the Bureau of the Census as having: <ul style="list-style-type: none"><li>• a population of 5000 - 49,999</li><li>• is not located within any urbanized area</li></ul>
Urbanized area	An urbanized area is designated by the Bureau of the Census as having: <ul style="list-style-type: none"><li>• a population of more than 49,999</li></ul>

### Boundaries of Urban Cluster Areas

The boundaries of the urban cluster area encompass:

- the entire urban cluster area, as designated by the Bureau of the Census
- the adjacent area, as agreed upon by local officials in cooperation with the State of Georgia

### Boundaries of Urbanized Areas

The boundaries of the urbanized area encompass:

- the entire urbanized area, as designated by the Bureau of the Census
- the adjacent area, as agreed upon by local officials in cooperation with the State of Georgia

### For More Information

For more information, visit the U.S. Department of Transportation Federal Highway Administration website (<http://www.fhwa.dot.gov/legsregs/directives/fap/g406300.htm>).

## Georgia's Rural and Urban Areas

### Georgia Rural Areas

Based on the 2010 census, the Census Bureau has re-designated the following areas as rural areas in Georgia. These designated areas have a population of less than 5,000.

- Eatonton
- Dawson
- Blakely

### Georgia Urban Cluster Areas

Based on the 2010 census, the Census Bureau has designated the following areas as urban cluster areas in Georgia. These designated areas have a population of 5,000 - 49,999.

**Note:**

- The Georgetown Urban Cluster Area is part of the Eufaula, Alabama Urban Cluster.
- The West Point Urban Cluster is part of the Valley - Lanett, Alabama Urban Cluster.

2010 Georgia Urban Cluster Area	Georgia County	2000 Georgia Urban Cluster Area	2010 Population
Adel	Cook	yes	6,986
Americus	Sumter	yes	19,106
Bainbridge	Decatur	yes	12,118
Barnesville	Lamar	yes	7,167
Baxley	Appling	no	5,208
Bremen	Haralson	no	6,516
Buckhead (Included in the Savannah UAB)	Bryan	no	5,168
Cairo	Grady	yes	9,414
Calhoun	Gordon	yes	31,493
Camilla	Mitchell	yes	6,939
Carrollton	Carroll	yes	42,872
Cedartown	Polk	yes	12,502
Cochran	Bleckley	no	6,324
Commerce	Jackson	yes	6,624
Cordele	Crisp	yes	12,416
Cornelia - Baldwin	Banks and Habersham	no	18,578
Douglas	Coffee	yes	14,154
Dublin	Laurens	yes	20,999
Eastman	Dodge	yes	6,053
Elberton	Elbert	no	5,925
Georgetown	Quitman	yes	9,520
Fitzgerald	Ben Hill and Irwin	yes	11,638

Georgia Department of Transportation  
Statewide Functional Classification & Urban Area Boundary Update Guide

2010 Georgia Urban Cluster Area	Georgia County	2000 Georgia Urban Cluster Area	2010 Population
Folkston	Charlton	no	5,961
Fort Valley	Peach	yes	10,605
Hartwell	Hart	no	5,884
Jackson	Butts	no	5,218
Jasper	Pickens	no	5,909
Jefferson	Jackson	no	10,443
Jesup	Wayne	yes	12,660
LaFayette	Walker	yes	7,364
LaGrange	Troup	yes	34,879
McRae	Telfair	no	8,747
Milledgeville	Baldwin	yes	29,808
Monroe	Walton	yes	15,854
Montezuma	Macon	no	6,900
Moultrie	Colquitt	yes	18,677
Rincon (Included in the Savannah UAB)	Effingham	no	12,111
Rockmart	Polk	no	7,646
Sandersville	Washington	yes	7,288
St. Marys - Kingsland	Camden	yes	34,630
St. Simons (Included in the Brunswick UAB)	Glynn	no	12,226
Statesboro	Bulloch	yes	36,314
Summerville	Chattooga	no	11,041
Swainsboro	Emanuel	yes	7,484
Sylvester	Worth	yes	6,685
Thomaston	Upson	yes	14,416
Thomasville	Thomas	yes	24,139
Thomson	McDuffie	yes	8,540
Tifton	Tift	yes	23,757
Toccoa	Stephens	yes	10,846
West Point	Harris and Troup	no	20,760
Vidalia	Montgomery and Toombs	yes	13,442
Waycross	Brantley, Pierce, and Ware	yes	25,723
Waynesboro	Burke	yes	5,830
Winder	Barrow	yes	37,831

## Georgia Urbanized Areas

Based on the 2010 census, the Census Bureau has re-designated the following areas as urbanized areas in Georgia. These designated areas have a population of more than 49,999.

**Note:**

- The Atlanta Urbanized Area includes Newnan.
- The Warner Robins Urbanized Area includes Perry.
- The Cartersville Urbanized Area is not a 2012 Georgia Metropolitan Planning Organization (MPO).

2010 Georgia Urbanized Area	2010 Georgia County	2000 Georgia Urbanized Area	2010 Georgia Metropolitan Planning Organization	2010 Population
Albany	Dougherty and Lee	yes	yes	95,779
Athens	Clarke, Jackson, Madison, Oconee, and Oglethorpe	yes	yes	128,754
Atlanta	Barrow, Bartow, Carroll, Cherokee, Clayton, Cobb, Coweta, Dawson, DeKalb, Douglas, Fayette, Forsyth, Fulton, Gwinnett, Hall, Henry, Jackson, Newton, Paulding, Pike, Rockdale, Spalding, and Walton	yes	yes	4,515,419
Augusta	Columbia and Richmond	yes	yes	386,787
Brunswick	Glynn	yes	yes	51,024
Cartersville	Bartow	no	no	52,477
Chattanooga	Catoosa, Dade, and Walker	yes	yes	381,112
Columbus	Chattahoochee, Harris, and Muscogee	yes	yes	253,602
Dalton	Catoosa, Murray, and Whitfield	yes	yes	85,239
Gainesville	Forsyth, Gwinnett, and Hall	yes	yes	130,846
Hinesville	Liberty and Long	yes	yes	51,456
Macon	Bibb, Jones, and Monroe	yes	yes	137,570
Rome	Floyd	yes	yes	60,851
Savannah	Bryan, Chatham, and Effingham	yes	yes	260,677
Valdosta	Brooks and Lowndes	yes	yes	77,085
Warner Robins	Bibb, Houston, and Peach	yes	yes	133,109

### For More Information

For more information, visit the U.S. Department of Transportation Federal Highway Administration website (<http://www.fhwa.dot.gov/>).



## Rules - Adjusting Urban Boundaries

### Urban Area Boundary Study

During the 2010 Urban Area Boundary Study, the Georgia Department of Transportation (GDOT) is concerned with the following areas:

- The Urbanized Areas with a population of 50,000 or greater, as defined by the U.S. Census.
- The Small Urban Areas with an urban cluster population of 5,000 to 49,999, as defined by the U.S. Census.

### Rules

- The adjusted Urbanized Area and Small Urban Area boundaries include the entire 2010 U.S. Census-defined boundary.
- The local governments and the Metropolitan Planning Organizations (MPO) will review their respective 2010 U.S. Census-defined boundary and adjust the boundary to the nearest geographical landmark so that the shape of the boundary is smooth.

In smoothing out the shape of the boundary, the geographic landmarks the local governments and the Metropolitan Planning Organizations (MPO) should consider are:

- Existing roadways
- Bridges over railroads and bodies of water
- County lines

When using these landmarks as boundaries, it should be noted that:

- If the boundary extends to a bridge, the boundary will end at the bridge and will not include the bridge.
- If the boundary extends to a section of roadway, the boundary will include the roadway.
- If the boundary extends to an interchange, the boundary will include the furthest ramp.

In smoothing out the shape of the boundary, the adjusted boundary should not extend more than 2.5 miles from the 2010 U.S. Census-defined boundary.

## 2010 Urbanized Area Review and Update

2012			2013										
Oct	Nov	Dec	Jan	Feb	Mar	Apr	May	Jun	Jul	Aug	Sep	Oct	Nov
10/1													
10/1 – 6/12													
			2/1 – 6/12										
			3/4 - 9/25										
									9/25 – 11/22				

### Process

The GDOT Office of Planning (OP) releases the census-defined boundaries to Georgia's Metropolitan Planning Organizations (MPO).

Georgia's Metropolitan Planning Organizations (MPO) does the following:

- Reviews the census-defined boundaries.
- Submits the proposed boundaries to the GDOT Office of Planning (OP).

The GDOT Office of Planning (OP) does the following:

- Reviews and recommends approval of the proposed boundaries.
- Submits the proposed boundaries to the GDOT Office of Transportation Data (OTD).

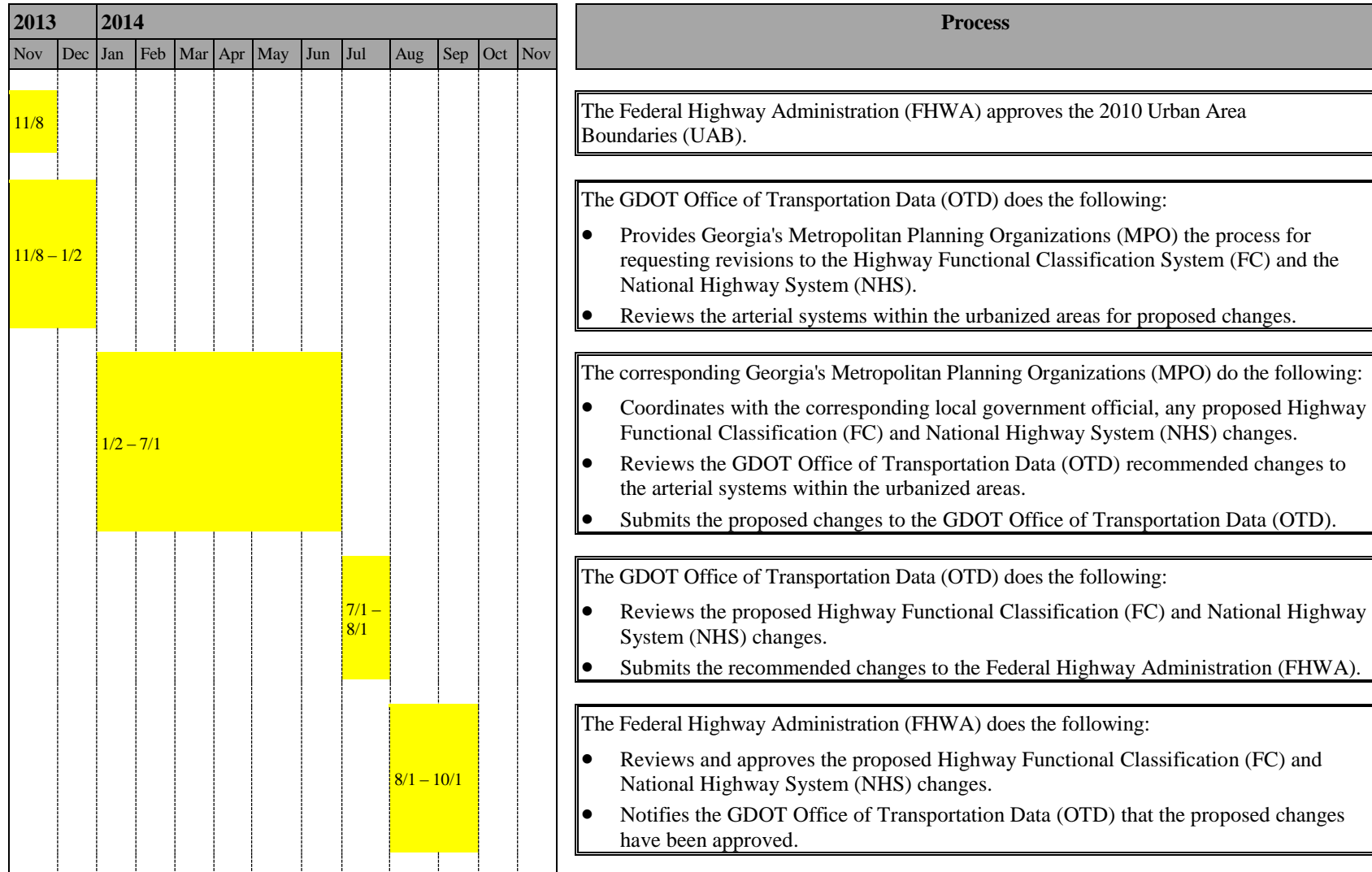
The GDOT Office of Transportation Data (OTD) does the following:

- Reviews and recommends approval of the proposed boundaries.
- Submits the proposed boundaries to the Federal Highway Administration (FHWA).

The Federal Highway Administration (FHWA) does the following:

- Reviews and approves the proposed boundaries.
- Notifies the GDOT Office of Transportation Data (OTD) that the proposed boundaries are approved.
- Notifies the GDOT Office of Planning (OP) that the proposed boundaries are approved.

## 2010 Review of Highway Functional Classification and National Highway Systems in Urbanized Areas



2014												
Nov	Dec	Jan	Feb	Mar	Apr	May	Jun	Jul	Aug	Sep	Oct	Nov
											10/1 – 12/1	

**Process**

- The GDOT Office of Transportation Data (OTD) does the following:
- Notifies the other GDOT offices that the proposed Highway Functional Classification (FC) and National Highway System (NHS) changes have been approved.
  - Notifies the corresponding Georgia's Metropolitan Planning Organizations (MPO) that the proposed Highway Functional Classification (FC) and National Highway System (NHS) changes have been approved.