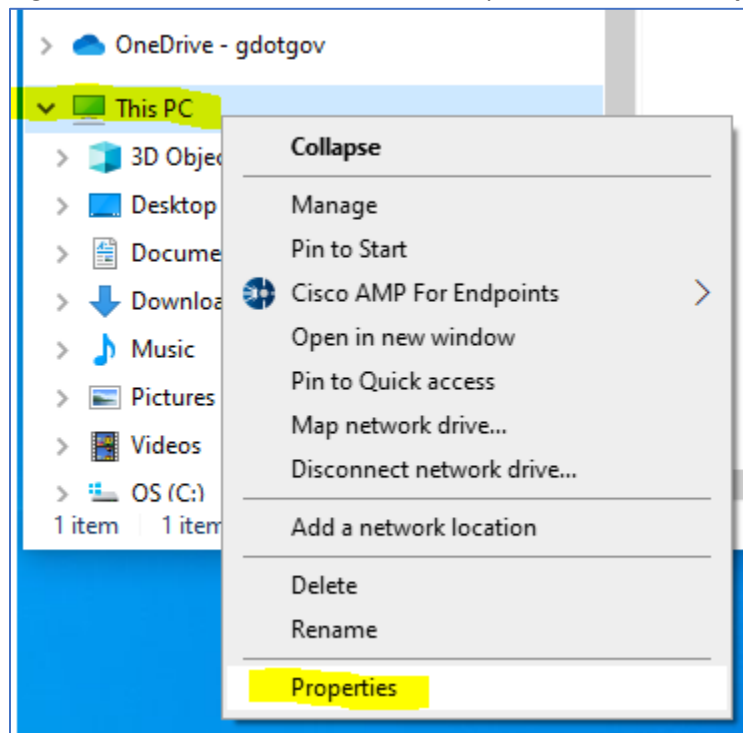
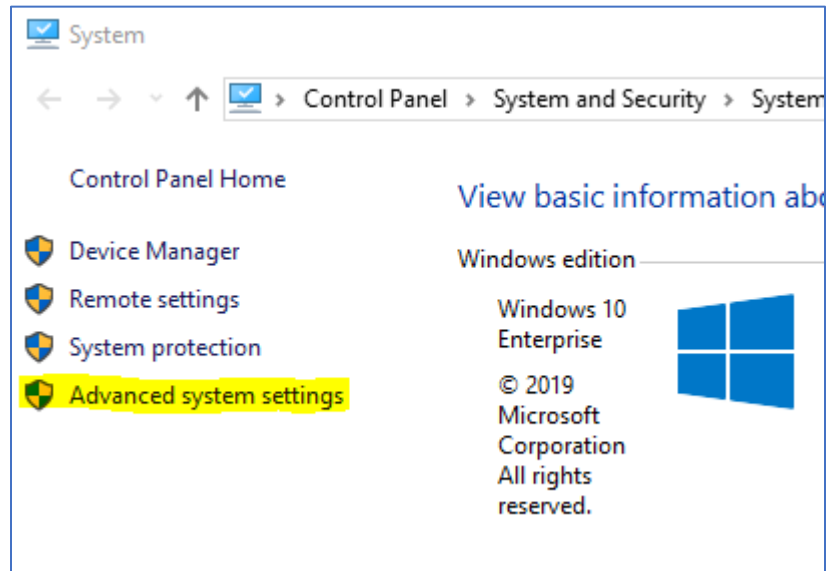


## Deed Writer Installation Instructions

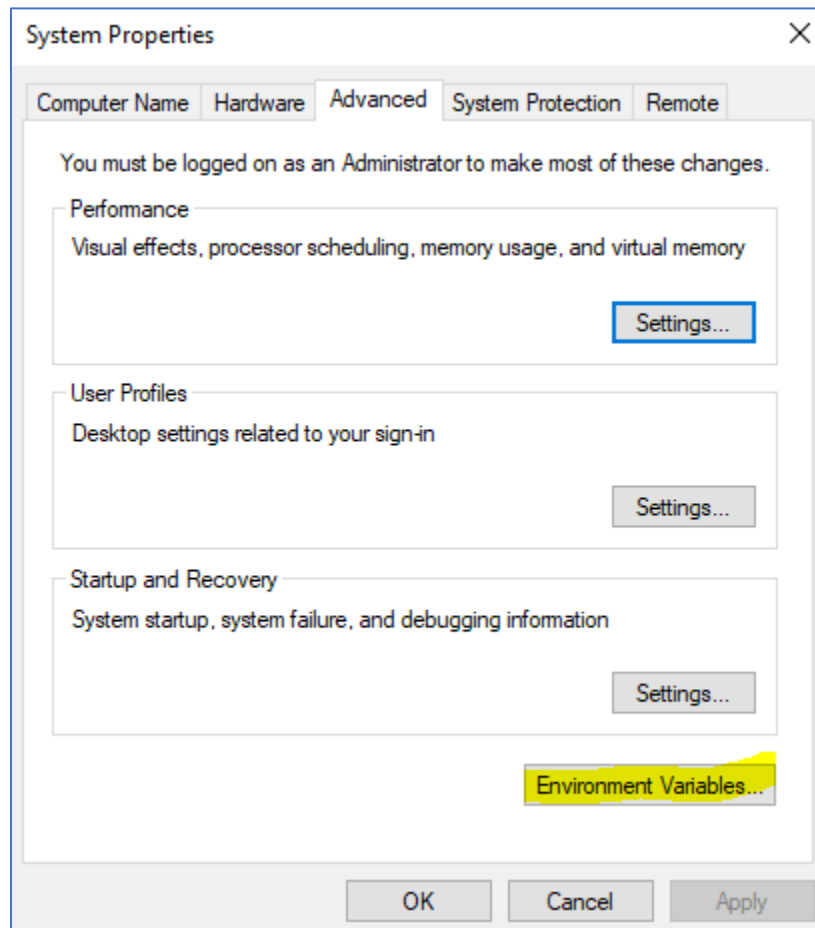
1. Log-in with admin privilege.
2. Double Click the Install executable (located internally here: [\\gdot.ad.local\gdot\InformationTechnology\ITBusinessPractices\ITEngineeringSoftwareTeam\Apps\DeedWriter\](https://gdot.ad.local/gdot/InformationTechnology/ITBusinessPractices/ITEngineeringSoftwareTeam/Apps/DeedWriter/) or downloadable from the ROADS page: <https://www.dot.ga.gov/GDOT/pages/DesignSoftware.aspx>). The install will remove all previous versions of Deed Writer as only one version can be installed on a computer at one time.
3. Once the install is complete you will need to edit the environment variables as this version is able to work with ProjectWise if needed.
  - a. Right mouse over **This PC** in windows explorer and select **Properties**.



- b. Select **Advanced System Settings**.



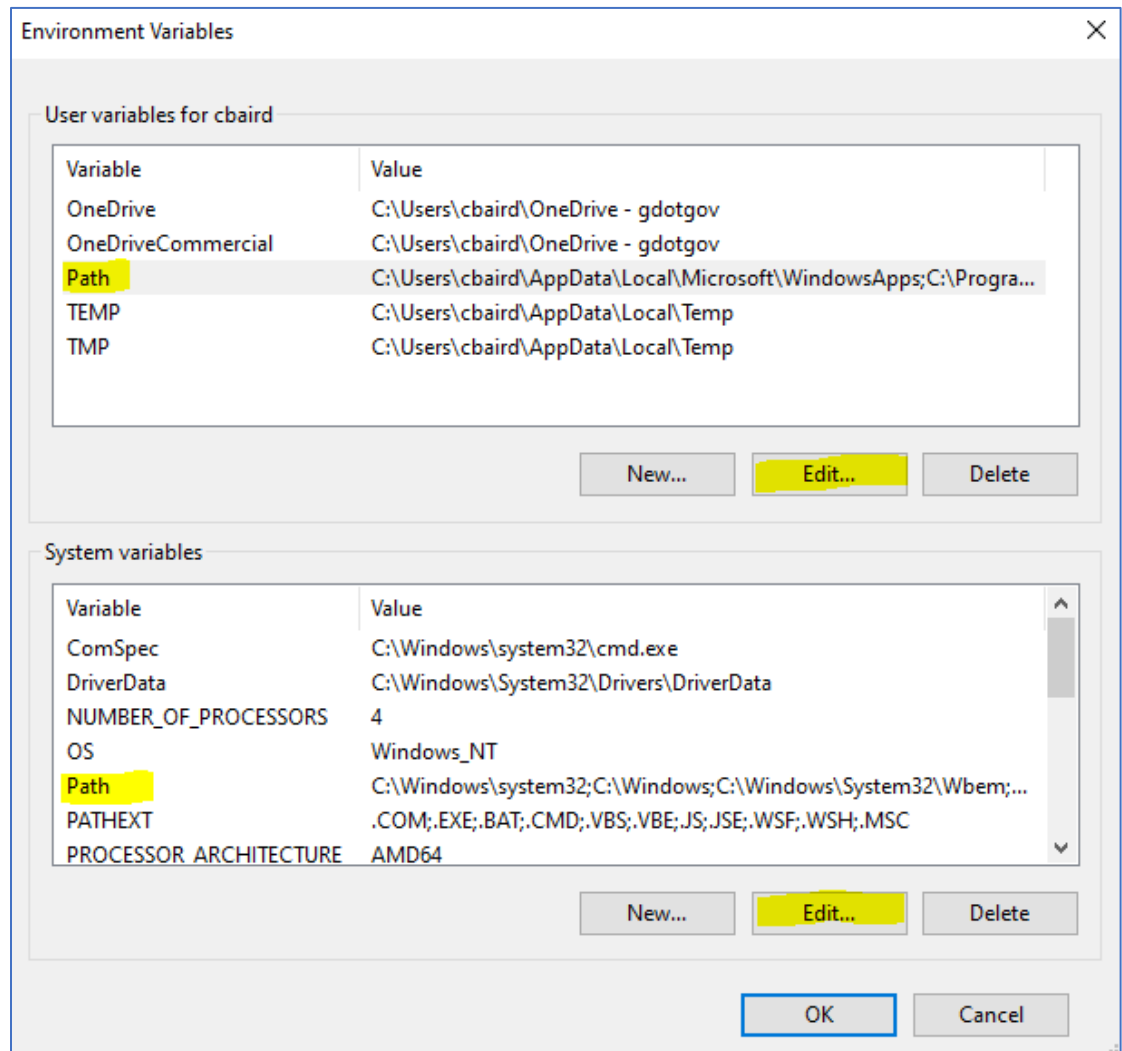
- c. Select **Environment Variables**.



- d. **Edit** the path for both the local and system Path to **Add** the following 2 paths...

C:\Program Files\Bentley\ProjectWise\

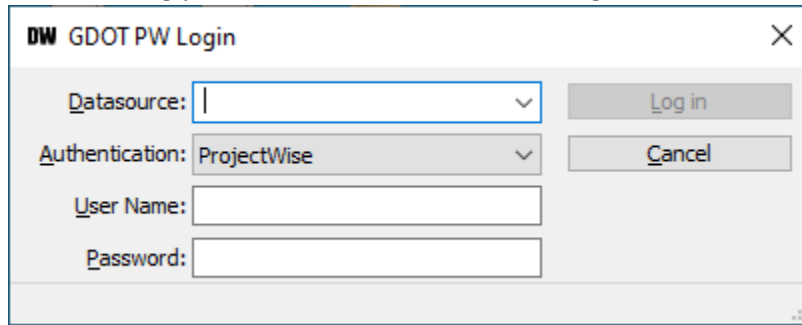
C:\Program Files\Bentley\ProjectWise\bin\



4. Once the Environment Variables have been added, test to make sure Deed Writer works by double clicking the newly installed icon shown below. During the install all other Deed Writer icons should have been removed.



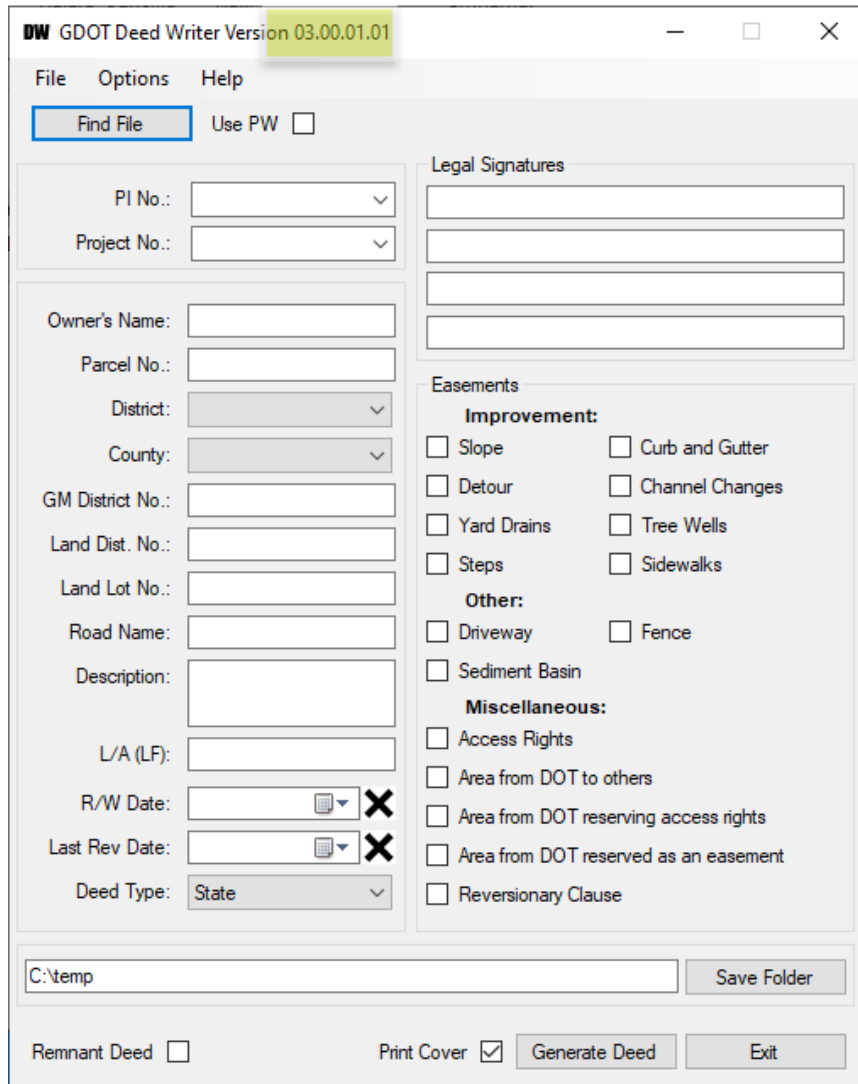
- a. The first thing you should see is the GDOT PW Login.



The screenshot shows a dialog box titled "DW GDOT PW Login". It contains the following fields and buttons:

- Datasource:** A dropdown menu with a downward arrow.
- Authentication:** A dropdown menu with "ProjectWise" selected and a downward arrow.
- User Name:** A text input field.
- Password:** A text input field.
- Log in:** A button to the right of the Datasource field.
- Cancel:** A button to the right of the Authentication field.

- b. Click Cancel to continue outside of ProjectWise and Deed Writer should open as shown below. Verify the Version Number is correct, highlighted in the screen shot below. **The latest Version Number is shown on the ROADS page (here: <https://www.dot.ga.gov/GDOT/pages/DesignSoftware.aspx>) under Miscellaneous Software near the bottom of the page.**



The screenshot shows the "DW GDOT Deed Writer Version 03.00.01.01" application window. The version number "03.00.01.01" is highlighted in yellow. The window has a menu bar with "File", "Options", and "Help". Below the menu bar is a toolbar with "Find File" and "Use PW" (with an unchecked checkbox). The main area is divided into several sections:

- PI No.:** A dropdown menu.
- Project No.:** A dropdown menu.
- Owner's Name:** A text input field.
- Parcel No.:** A text input field.
- District:** A dropdown menu.
- County:** A dropdown menu.
- GM District No.:** A text input field.
- Land Dist. No.:** A text input field.
- Land Lot No.:** A text input field.
- Road Name:** A text input field.
- Description:** A text input field.
- L/A (LF):** A text input field.
- R/W Date:** A date picker with a calendar icon and a close button (X).
- Last Rev Date:** A date picker with a calendar icon and a close button (X).
- Deed Type:** A dropdown menu with "State" selected.
- Legal Signatures:** Four empty text input fields.
- Easements:** A section with sub-sections:
  - Improvement:** Includes checkboxes for Slope, Curb and Gutter, Detour, Channel Changes, Yard Drains, Tree Wells, Steps, and Sidewalks.
  - Other:** Includes checkboxes for Driveway, Fence, and Sediment Basin.
  - Miscellaneous:** Includes checkboxes for Access Rights, Area from DOT to others, Area from DOT reserving access rights, Area from DOT reserved as an easement, and Reversionary Clause.

At the bottom of the window, there is a file path "C:\temp" and a "Save Folder" button. At the very bottom, there are checkboxes for "Remnant Deed" (unchecked), "Print Cover" (checked), and buttons for "Generate Deed" and "Exit".