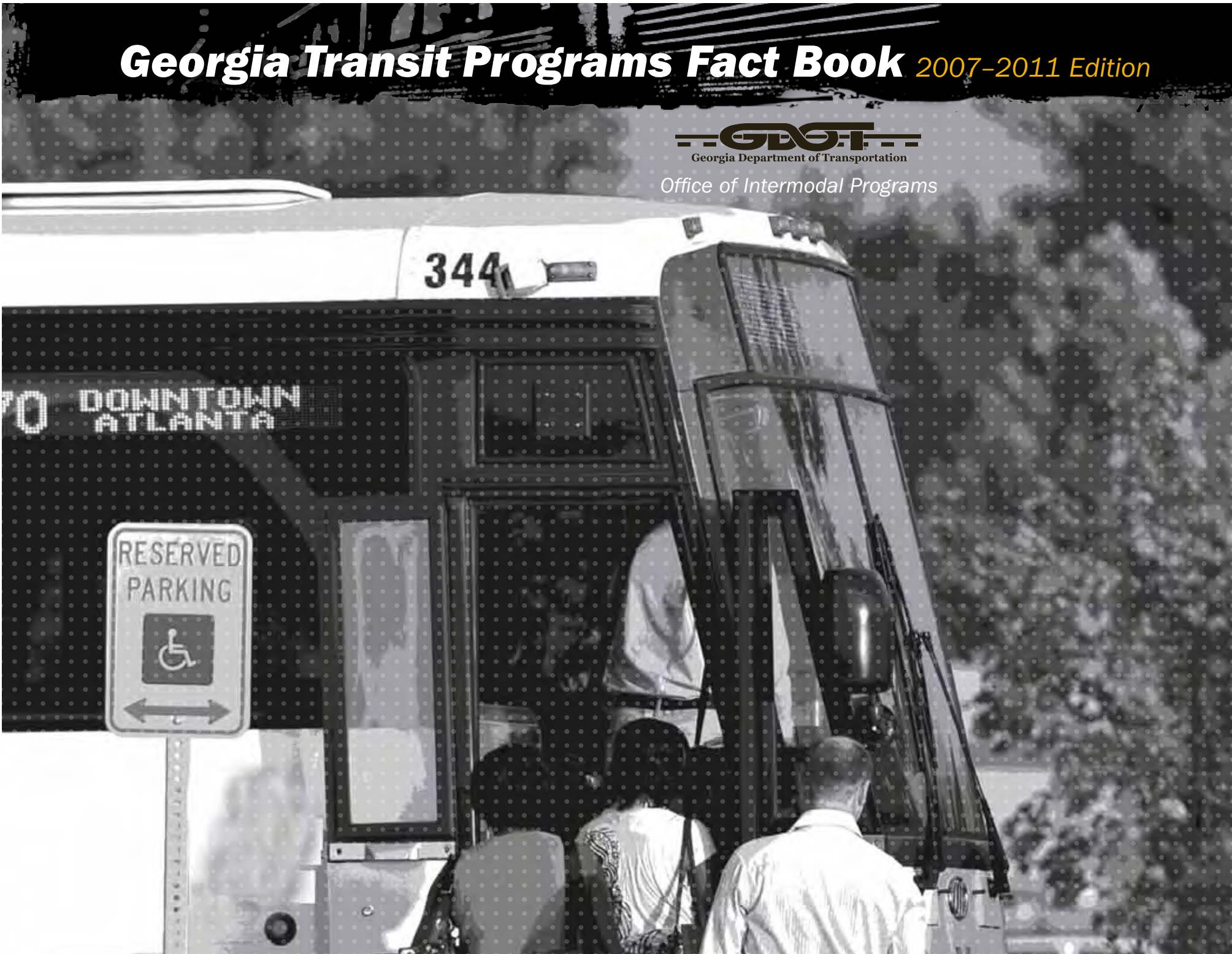


# Georgia Transit Programs Fact Book *2007-2011 Edition*



Georgia Department of Transportation

Office of Intermodal Programs



## Introduction

The Georgia Transit Data Fact Book is published annually by the Georgia Department of Transportation. This report summarizes fiscal years 2007-2011 operations data for the 14 urban public transit systems and the 112 rural public transit systems in the Georgia. We also have included other related activities, including the park and ride lot program, rail passenger program and the intercity bus program.

This Georgia Transit Data Fact Book is published primarily to provide information about the performance of Georgia public transportation programs during the preceding fiscal year. The publication receives wide distribution to local and state officials, planners, researchers and other organizations that use the document as a reference for public transportation activity in our state.

The operations data compiled in this report for urban and rural systems was obtained from a variety of sources, including an annual survey of transit systems, operating reports, and on-board surveys conducted by the Department. The Atlanta area system (MARTA) and Cobb Community Transit (CCT) conduct their own surveys. Data for the Douglas County Rideshare Program, rural public transportation systems, the park and ride lot program, and the rail passenger services is collected throughout the year.

To address the need to improve efficiency, facilitate decision-making and protect the state's investment in transit, the Department implemented the Management Information System (MIS) based on the Federal Transit Administration's (FTA) National Transit Database. This MIS has resulted in the development of additional tools for analyzing cost efficiency, cost and service effectiveness as well as service supplied and consumed.

## Acknowledgments

The Georgia Department of Transportation wishes to express its sincere appreciation to transit managers, transit planners, state and local officials who provided assistance during the preparation of this document.

## Notice

This report is the product of a study financed in part by the Federal Transit Administration (FTA), and U.S. Department of Transportation (USDOT). The contents of this report reflect the views of the Georgia Department of Transportation, which is responsible for the facts and accuracy of the data presented herein. The contents do not necessarily reflect the official views or policy of the U.S. Department of Transportation.

*Please send any comments or questions to:*

**Georgia Department of Transportation**  
Office of Intermodal Programs  
600 West Peachtree Street  
Atlanta, Georgia 30308  
Attention: Karen Quarles  
Phone: 404.631.1233  
Fax: 404.631.1935  
e-mail: [kquarles@dot.ga.gov](mailto:kquarles@dot.ga.gov)

# Table Of Contents

- Introduction ..... 1
- Georgia Transit System Program Facts ..... 1
- Georgia Transit System Program Facts (continued) ..... 1
- 2010 Grant Funding ..... 1
- Urban Transit Providers Listing ..... 1
- Albany Transit System ..... 1
- Athens Transit System ..... 1
- Augusta Public Transit (APT) ..... 1
- Chatham Area Transit Authority (CAT) ..... 1
- Cobb Community Transit (CCT) ..... 1
- Columbus Transit System (METRA) ..... 1
- Douglas County Rideshare ..... 1
- Georgia Regional Transportation Authority (GRTA) ..... 1
- Gwinnett County Transit (GCT) ..... 1
- Hall Area Transit (HAT) ..... 1
- Macon-Bibb Transit Authority ..... 1
- Metropolitan Atlanta Rapid Transit Authority (MARTA) ..... 1
- City of Rome Transit Department (RTD) ..... 1
- Rural Transit Provider Listing ..... 1
- Chattooga County Transit ..... 1
- Cherokee County Transit ..... 1
- City of Americus ..... 1
- City of Cedartown ..... 1
- City of Unadilla ..... 1
- City of Vienna ..... 1
- Clay County ..... 1
- Coastal Regional Commission ..... 1
- Columbia County Commission Transit ..... 1
- Cook County Transit ..... 1
- Coweta County ..... 1
- Crawford County Transit ..... 1
- Crisp County Transit ..... 1
- Dade County Transit ..... 1
- Dawson County Transit ..... 1
- Dodge County Transit ..... 1
- Elbert County ..... 1
- Fannin County ..... 1
- Forsyth County Public Transportation ..... 1
- Gilmer County Transit System ..... 1
- Glascock County Transit ..... 1
- Gordon County Transit ..... 1
- Greene County Commission Transit ..... 1
- Habersham County Transit ..... 1
- Hall County ..... 1
- Hancock County Transit ..... 1
- Haralson County Transit ..... 1
- Hart County Public Transit ..... 1

- Heard County Transit ..... 1
- Henry County Transit ..... 1
- Jackson County ..... 1
- Jefferson County Transit ..... 1
- Jenkins County Transit ..... 1
- Jones County Transit ..... 1
- Lincoln County Transit ..... 1
- Long County Transit ..... 1
- Lumpkin County ..... 1
- Macon County Transit ..... 1
- McDuffie County Commission Transit ..... 1
- Montgomery County Transit ..... 1
- Morgan County Transit ..... 1
- Murray County Transportation System ..... 1
- Paulding County ..... 1
- Peach County Transit ..... 1
- Pickens County ..... 1
- Pierce County Transit ..... 1
- Polk County ..... 1
- Pulaski County Transit ..... 1
- Quitman County Transit ..... 1
- Richmond County Commission Transit ..... 1
- Social Circle Area Transit ..... 1
- Southwest Georgia RC ..... 1
- Talbot County Transit ..... 1
- Taliaferro County Board of Commissioners ..... 1
- Tattnall County Transit ..... 1
- Taylor County Transit ..... 1
- Telfair County Transit ..... 1
- Thomas County Transit ..... 1
- Three Rivers Regional Commission ..... 1
- Tift Transit System ..... 1
- Towns County ..... 1
- Treutlen County Commission ..... 1
- Troup County Transit ..... 1
- Turner County ..... 1
- Twiggs County Transit ..... 1
- Union County Transit ..... 1
- Walker County ..... 1
- Ware County ..... 1
- Wayne County Transit ..... 1
- Wheeler County Transit ..... 1
- Whitfield County W.T.S. ..... 1
- Wilcox County Transit ..... 1
- Wilkes County Commission Transit ..... 1
- Wilkinson County Commission Transit ..... 1

## Urban Transit Systems



## Urban Transit Operations

There are 13 urban public transportation systems in Georgia. They are as follows:

- Albany Transit Systems (ATS)
- Athens Transit system (ATS)
- Augusta Public Transit (APT)
- Chatham Area Transit Authority (CAT)
- Cobb County Community Transit (CCT)
- Columbus Transit System (METRA)
- \*Douglas County Rideshare
- Hall Area Transit (HAT)
- Gwinnett County Transit
- Liberty Transit System (LTS)
- Macon-Bibb County Transit Authority (MBTA)
- Metropolitan Atlanta Rapid Transit Authority (MARTA)
- Rome Transit Department (RTD)

\*Douglas County Rideshare provides vanpool services for County residents

TRANSIT SERVICE OPERATIONS:

Day of Week	Service Hours
Monday – Friday	5:00am - 8:15pm
Saturday	6:00am - 8:15pm
Sunday	7:25am - 6:35pm



FY 2007- 2011 Agency Summary

## Albany Transit System (ATS)

712 Flint Avenue  
 Albany, GA 31701-2416  
 Telephone: 229.431.2824  
 Fax: 229.430.5160  
 Transit Director: David Hamilton  
 E-mail: [dhamilton@dougherty.ga.us](mailto:dhamilton@dougherty.ga.us)  
 Website: [www.albany.ga.us](http://www.albany.ga.us)

### SYSTEM FARES BY RIDER

Bus	Full Adult	Student	Child	Senior Citizen	Transfer	Other
Express	N/A	N/A	N/A	N/A	N/A	N/A
Local	\$1.25	\$1.25	.50	.50	0	N/A
Paratransit	\$2.50/trip					

### GENERAL INFORMATION

2010 Urbanized Area (UZA)  
 Population: 77,434

#### Operating Expense

FY 2007 - \$2,969,933  
 FY 2008 - \$3,063,345  
 FY 2009 - \$5,657,762  
 FY 2010 - \$4,658,647  
 FY 2011 - \$4,835,534

#### Operating Revenue

FY 2007 - \$1,454,451  
 FY 2008 - \$1,033,685  
 FY 2009 - \$1,204,473  
 FY 2010 - \$2,132,470  
 FY 2011 - \$2,931,268

#### Annual Revenue Vehicle Hours

FY 2007 - 58,409  
 FY 2008 - 67,644  
 FY 2009 - 73,879  
 FY 2010 - 76,145  
 FY 2011 - 69,849

#### Total Revenue Vehicles

FY 2007 - 11  
 FY 2008 - 12  
 FY 2009 - 10  
 FY 2010 - 11  
 FY 2011 - 11

#### Peak Vehicle Usage

FY 2007 - 7  
 FY 2008 - 7  
 FY 2009 - 7  
 FY 2010 - 7  
 FY 2011 - 8

### SERVICE CONSUMPTION

#### Annual Unlinked Trips

FY 2007 - 789,718  
 FY 2008 - 782,051  
 FY 2009 - 1,012,392  
 FY 2010 - 874,092  
 FY 2011 - 941,915

#### Annual Passenger Miles

FY 2007 - 533,871  
 FY 2008 - 531,768  
 FY 2009 - 531,183  
 FY 2010 - 529,949  
 FY 2011 - 539,215

### PERFORMANCE INDICATORS

#### Cost Efficiency

**Operating Expense/Revenue Vehicle Mile**  
 FY 2007 - \$3.63  
 FY 2008 - \$4.13  
 FY 2009 - \$3.64  
 FY 2010 - \$4.69  
 FY 2011 - \$4.62

#### Operating Expense/Revenue Vehicle Hour

FY 2007 - \$75.87  
 FY 2008 - \$62.66  
 FY 2009 - \$59.27  
 FY 2010 - \$78.63  
 FY 2011 - \$78.08

### COST EFFECTIVENESS

#### Operating Expense/Unlinked Trip

FY 2007 - \$3.06  
 FY 2008 - \$3.43  
 FY 2009 - \$2.31  
 FY 2010 - \$2.89  
 FY 2011 - \$2.65

#### Operating Expense/Passenger Mile

FY 2007 - \$4.52  
 FY 2008 - \$5.05  
 FY 2009 - \$4.40  
 FY 2010 - \$4.69  
 FY 2011 - \$4.62

#### Fare Box Recovery Ratio

FY 2007 - 18%  
 FY 2008 - 18%  
 FY 2009 - 21%  
 FY 2010 - 19%  
 FY 2011 - 21%

### SERVICE EFFECTIVENESS

#### Unlinked Trips/Revenue Vehicle Mile

FY 2007 - 1.19  
 FY 2008 - 1.20  
 FY 2009 - 1.57  
 FY 2010 - 1.62  
 FY 2011 - 1.00

#### Unlinked Trips/Revenue Vehicle Hour

FY 2007 - 24.79  
 FY 2008 - 18.27  
 FY 2009 - 25.65  
 FY 2010 - 27.21  
 FY 2011 - 16.90

### TRANSIT SERVICE OPERATIONS:

DAY OF WEEK	SERVICE HOURS
Monday – Friday	6:00am - 10:00pm
Saturday	7:00am - 10:00pm
Sunday	No Sunday Service

FY 2007 - 2011 Agency Summary

## Athens Transit System (ATS)

775 East Broad St, Athens, GA 30601-1725

Telephone: 706.613.3430

Fax: 229.613.3433

Transit Director: Butch McDuffie

E-mail: [butch.mcduffie@athensclarkecounty.com](mailto:butch.mcduffie@athensclarkecounty.com)Website: [www.athenstransit.com](http://www.athenstransit.com)

### SYSTEM FARES BY RIDER

Bus	Full Adult	Student	Child	Senior Citizen	Transfer	Other
Express	N/A	N/A	N/A	N/A	N/A	N/A
Local	\$1.50	\$1.25	N/A	0.75	Free	N/A
Paratransit	\$3.00/trip					

### GENERAL INFORMATION

2010 Urbanized Area (UZA)  
Population: 115,452

#### Operating Expense

FY 2007 - \$2,969,933  
FY 2008 - \$3,063,345  
FY 2009 - \$5,657,762  
FY 2010 - \$4,658,647  
FY 2011 - \$4,835,534

#### Operating Revenue

FY 2007 - \$1,454,451  
FY 2008 - \$1,033,685  
FY 2009 - \$1,204,473  
FY 2010 - \$2,132,470  
FY 2011 - \$2,931,268

#### Annual Revenue Vehicle Hours

FY 2007 - 58,409  
FY 2008 - 67,644  
FY 2009 - 73,879  
FY 2010 - 76,145  
FY 2011 - 71,378

#### Total Revenue Vehicles

FY 2007 - 26  
FY 2008 - 28  
FY 2009 - 28  
FY 2010 - 31  
FY 2011 - 31

#### Peak Vehicle Usage

FY 2007 - 19  
FY 2008 - 21  
FY 2009 - 22  
FY 2010 - 24  
FY 2011 - 22

### SERVICE CONSUMPTION

#### Annual Unlinked Trips

FY 2007 - 1,383,579  
FY 2008 - 1,536,693  
FY 2009 - 1,847,803  
FY 2010 - 1,779,819  
FY 2011 - 1,743,880

#### Annual Passenger Miles

FY 2007 - 5,228,895  
FY 2008 - 5,056,591  
FY 2009 - 5,789,939  
FY 2010 - 5,385,019  
FY 2011 - 5,299,446

### PERFORMANCE INDICATORS

**Cost Efficiency**  
**Operating Expense/Revenue Vehicle Mile**  
 FY 2007 - \$2.15  
 FY 2008 - \$1.99  
 FY 2009 - \$3.06  
 FY 2010 - \$2.62  
 FY 2011 - \$5.99

**Operating Expense/Revenue Vehicle Hour**  
 FY 2007 - \$50.85  
 FY 2009 - \$76.58  
 FY 2010 - \$63.05  
 FY 2011 - \$78.08

### COST EFFECTIVENESS

**Operating Expense/Unlinked Trip**  
 FY 2007 - \$2.15  
 FY 2008 - \$1.99  
 FY 2009 - \$3.06  
 FY 2010 - \$2.62  
 FY 2011 - \$2.77

**Operating Expense/Passenger Mile**  
 FY 2007 - \$0.57  
 FY 2008 - \$0.61  
 FY 2009 - \$0.98  
 FY 2010 - \$4.69  
 FY 2011 - \$0.91

#### Fare Box Recovery Ratio

FY 2007 - 49%  
FY 2008 - 34%  
FY 2009 - 21%  
FY 2010 - 46%  
FY 2011 - 61%

### SERVICE EFFECTIVENESS

**Unlinked Trips/Revenue Vehicle Mile**  
 FY 2007 - 2.04  
 FY 2008 - 1.80  
 FY 2009 - 2.14  
 FY 2010 - 2.08  
 FY 2011 - 2.16

**Unlinked Trips/Revenue Vehicle Hour**  
 FY 2007 - 23.69  
 FY 2008 - 22.72  
 FY 2009 - 25.01  
 FY 2010 - 24.09  
 FY 2011 - 24.97

### TRANSIT SERVICE OPERATIONS:

Day of Week	Service Hours
Monday - Friday	5:50am - 8:30pm
Saturday	6:20am - 8:20pm
Sunday	No Sunday Service

FY 2007 - 2011 Agency Summary

## Augusta Public Transit (APT)

1535 Fenwick Street, Augusta, GA 30904  
 Telephone: 706.821.1721  
 Fax: 706.821.1752  
 Transit Manager: Mike Rosson  
 E-mail: [mike.rosson@mobilitytransit.com](mailto:mike.rosson@mobilitytransit.com)  
 Website: [www.mobilitytransit.com](http://www.mobilitytransit.com)

### SYSTEM FARES BY RIDER

Bus	Full Adult	Student	Child	Senior Citizen	Transfer	Other
Express	N/A	N/A	N/A	N/A	N/A	N/A
Local	\$1.25	\$6.00	6 Free	0.60	0.50	N/A
Paratransit	\$2.50; \$3.50; \$6.00; \$7.00					

### GENERAL INFORMATION

2010 Urbanized Area (UZA)  
 Population: 195,844

**Operating Expense**  
 FY 2007 - \$3,031,709  
 FY 2008 - \$3,392,869  
 FY 2009 - \$4,843,852  
 FY 2010 - \$4,612,528  
 FY 2011 - \$4,529,972

### Operating Revenue

FY 2007 - \$668,698  
 FY 2008 - \$661,708  
 FY 2009 - \$701,464  
 FY 2010 - \$695,295  
 FY 2011 - \$672,189

### Annual Revenue Vehicle Hours

FY 2007 - 48,928  
 FY 2008 - 44,573  
 FY 2009 - 41,544  
 FY 2010 - 43,233  
 FY 2011 - 41,443

### Total Revenue Vehicles

FY 2007 - 25  
 FY 2008 - 23  
 FY 2009 - 25  
 FY 2010 - 27  
 FY 2011 - 33

### Peak Vehicle Usage

FY 2007 - 12  
 FY 2008 - 12  
 FY 2009 - 19  
 FY 2010 - 19  
 FY 2011 - 18

### SERVICE CONSUMPTION

#### Annual Unlinked Trips

FY 2007 - 904,652  
 FY 2008 - 879,257  
 FY 2009 - 847,224  
 FY 2010 - 563,404  
 FY 2011 - 707,051

#### Annual Passenger Miles

FY 2007 - 612,402  
 FY 2008 - 5,056,591  
 FY 2009 - 4,417,468  
 FY 2010 - 2,721,241  
 FY 2011 - 3,415,056

### PERFORMANCE INDICATORS

#### Cost Efficiency Operating Expense/Revenue Vehicle Mile

FY 2007 - \$5.13  
 FY 2008 - \$6.23  
 FY 2009 - \$8.31  
 FY 2010 - \$7.71  
 FY 2011 - \$8.72

#### Operating Expense/Revenue Vehicle Hour

FY 2007 - \$61.96  
 FY 2008 - \$76.12  
 FY 2009 - \$116.60  
 FY 2010 - \$106.69  
 FY 2011 - \$109.30

### COST EFFECTIVENESS

#### Operating Expense/Unlinked Trip

FY 2007 - \$3.35  
 FY 2008 - \$3.86  
 FY 2009 - \$5.72  
 FY 2010 - \$8.19  
 FY 2011 - \$6.40

#### Operating Expense/ Passenger Mile

FY 2007 - \$4.95  
 FY 2008 - \$0.67  
 FY 2009 - \$1.10  
 FY 2010 - \$1.70  
 FY 2011 - \$1.33

#### Fare Box Recovery Ratio

FY 2007 - 22%  
 FY 2008 - 20%  
 FY 2009 - 14%  
 FY 2010 - 15%  
 FY 2011 - 15%

### SERVICE EFFECTIVENESS

#### Unlinked Trips/ Revenue Vehicle Mile

FY 2007 - 1.53  
 FY 2008 - 1.62  
 FY 2009 - 1.45  
 FY 2010 - .94  
 FY 2011 - 1.36

#### Unlinked Trips/ Revenue Vehicle Hour

FY 2007 - 18.14  
 FY 2008 - 20.82  
 FY 2009 - 19.92  
 FY 2010 - 13.03  
 FY 2011 - 17.06

### TRANSIT SERVICE OPERATIONS:

Day of Week	Service Hours
Monday - Friday	5:30am - 10:25pm
Saturday	5:30am - 10:15pm
Sunday	6:40am - 7:30pm

FY 2007 - 2011 Agency Summary

## Chatham Area Transit Authority (CAT)

900 East Gwinnett Street, Savannah, GA 31412-9118  
 Telephone: (912) 629-3929  
 Fax: (912) 629-3945  
 Transit Director: Dr. Chadwick L. Reese, Ph.D.  
 E-mail: [Chadwick.reese@veliatransdev.com](mailto:Chadwick.reese@veliatransdev.com)  
 Website: [www.catchacat.org](http://www.catchacat.org)

### SYSTEM FARES BY RIDER

Bus	Full Adult	Student	Child	Senior Citizen	Transfer	Other
Express	N/A	N/A	N/A	N/A	N/A	N/A
Local	\$1.50	\$1.50	\$1.50	0.75	N/A	N/A
Paratransit	\$1.80 per fare					

### GENERAL INFORMATION

2010 Urbanized Area (UZA)  
 Population: 136,286

**Operating Expense**  
 FY 2007 - \$14,456,024  
 FY 2008 - \$13,185,609  
 FY 2009 - \$13,185,609  
 FY 2010 - \$16,213,442  
 FY 2011 - \$16,213,442

### Operating Revenue

FY 2007 - \$668,698  
 FY 2008 - \$661,708  
 FY 2009 - \$701,464  
 FY 2010 - \$695,295  
 FY 2011 - \$672,189

### Annual Revenue Vehicle Hours

FY 2007 - 48,928  
 FY 2008 - 44,573  
 FY 2009 - 41,544  
 FY 2010 - 43,233  
 FY 2011 - 41,443

### Total Revenue Vehicles

FY 2007 - 25  
 FY 2008 - 23  
 FY 2009 - 25  
 FY 2010 - 27  
 FY 2011 - 33

### Peak Vehicle Usage

FY 2007 - 12  
 FY 2008 - 12  
 FY 2009 - 19  
 FY 2010 - 19  
 FY 2011 - 18

### SERVICE CONSUMPTION

#### Annual Unlinked Trips

FY 2007 - 904,652  
 FY 2008 - 879,257  
 FY 2009 - 847,224  
 FY 2010 - 563,404  
 FY 2011 - 707,051

#### Annual Passenger Miles

FY 2007 - 591,068  
 FY 2008 - 5,056,591  
 FY 2009 - 4,417,468  
 FY 2010 - 2,721,241  
 FY 2011 - 3,415,056

### PERFORMANCE INDICATORS

**Cost Efficiency**  
**Operating Expense/Revenue Vehicle Mile**  
 FY 2007 - \$5.13  
 FY 2008 - \$6.23  
 FY 2009 - \$8.31  
 FY 2010 - \$7.71  
 FY 2011 - \$8.72

**Operating Expense/Revenue Vehicle Hour**  
 FY 2007 - \$61.96  
 FY 2008 - \$76.12  
 FY 2009 - \$116.60  
 FY 2010 - \$106.69  
 FY 2011 - \$109.30

### COST EFFECTIVENESS

**Operating Expense/Unlinked Trip**  
 FY 2007 - \$3.35  
 FY 2008 - \$3.86  
 FY 2009 - \$5.72  
 FY 2010 - \$8.19  
 FY 2011 - \$6.40

**Operating Expense/Passenger Mile**  
 FY 2007 - \$5.70  
 FY 2008 - \$0.67  
 FY 2009 - \$1.10  
 FY 2010 - \$1.70  
 FY 2011 - \$1.33

**Fare box Recovery Ratio**  
 FY 2007 - 22%  
 FY 2008 - 20%  
 FY 2009 - 14%  
 FY 2010 - 15%  
 FY 2011 - 15%

### SERVICE EFFECTIVENESS

**Unlinked Trips/Revenue Vehicle Mile**  
 FY 2007 - 1.53  
 FY 2008 - 1.62  
 FY 2009 - 1.45  
 FY 2010 - .94  
 FY 2011 - 1.36

**Unlinked Trips/Revenue Vehicle Hour**  
 FY 2007 - 18.14  
 FY 2008 - 20.82  
 FY 2009 - 19.92  
 FY 2010 - 13.03  
 FY 2011 - 17.06

### TRANSIT SERVICE OPERATIONS:

Day of Week	Service Hours
Monday - Friday	5:00am - 1:00am
Saturday	6:00am - 12:30am
Sunday	No Sunday Service



FY 2007 - 2011 Agency Summary

## Cobb Community Transit (CCT)

4635 Commerce Park Drive  
 Marietta, GA 30060-2737  
 Telephone: (770) 528-1610  
 Fax: (770) 528-4360  
 Transit Manager: Rebecca Gutowsky  
 E-mail: [rebecca.gutowsky@cobbcounty.org](mailto:rebecca.gutowsky@cobbcounty.org)  
 Website: [www.cobbct.org](http://www.cobbct.org)

### SYSTEM FARES BY RIDER

Bus	Full Adult	Student	Child	Senior Citizen	Transfer	Other
Express	\$4.00	\$4.00	\$0	\$4.00	Free	\$4.00
Local	\$2.00	\$1.50	\$0	\$1.00	Free	\$1.00
Paratransit	\$4.00/Adult	\$3.00/Youth				

### GENERAL INFORMATION

2010 Urbanized Area (UZA)  
 Population: 688,078

**Operating Expense**  
 FY 2007 - \$14,686,138  
 FY 2008 - \$15,751,641  
 FY 2009 - \$18,387,685  
 FY 2010 - \$18,882,590  
 FY 2011 - \$19,307,068

### Operating Revenue

FY 2007 - \$14,686,183  
 FY 2008 - \$15,751,641  
 FY 2009 - \$18,387,685  
 FY 2010 - \$16,213,442  
 FY 2011 - \$19,307,068

### Annual Revenue Vehicle Hours

FY 2007 - 151,572  
 FY 2008 - 174,736  
 FY 2009 - 177,192  
 FY 2010 - 188,160  
 FY 2011 - 188,759

### Total Revenue Vehicles

FY 2007 - 95  
 FY 2008 - 95  
 FY 2009 - 95  
 FY 2010 - 101  
 FY 2011 - 101

### Peak Vehicle Usage

FY 2007 - 75  
 FY 2008 - 79  
 FY 2009 - 79  
 FY 2010 - 84  
 FY 2011 - 84

### SERVICE CONSUMPTION

#### Annual Unlinked Trips

FY 2007 - 3,841,320  
 FY 2008 - 4,188,773  
 FY 2009 - 4,822,702  
 FY 2010 - 4,469,187  
 FY 2011 - 4,479,126

#### Annual Passenger Miles

FY 2007 - 33,189,004  
 FY 2008 - 35,347,358  
 FY 2009 - 42,043,335  
 FY 2010 - 39,647,244  
 FY 2011 - 40,210,824

### PERFORMANCE INDICATORS

**Cost Efficiency**  
**Operating Expense/Revenue Vehicle Mile**  
 FY 2007 - \$4.80  
 FY 2008 - \$4.75  
 FY 2009 - \$5.53  
 FY 2010 - \$5.31  
 FY 2011 - \$5.18

**Operating Expense/Revenue Vehicle Hour**  
 FY 2007 - \$96.89  
 FY 2008 - \$90.15  
 FY 2009 - \$103.77  
 FY 2010 - \$100.35  
 FY 2011 - \$102.28

### COST EFFECTIVENESS

**Operating Expense/Unlinked Trip**  
 FY 2007 - \$3.82  
 FY 2008 - \$3.76  
 FY 2009 - \$3.81  
 FY 2010 - \$4.22  
 FY 2011 - \$4.31

**Operating Expense/Passenger Mile**  
 FY 2007 - \$0.44  
 FY 2008 - \$0.45  
 FY 2009 - \$0.43  
 FY 2010 - \$0.47  
 FY 2011 - \$0.48

### Fare Box Recovery Ratio

FY 2007 - 100%  
 FY 2008 - 100%  
 FY 2009 - 100%  
 FY 2010 - 100%  
 FY 2011 - 100%

### SERVICE EFFECTIVENESS

**Unlinked Trips/Revenue Vehicle Mile**  
 FY 2007 - 1.26  
 FY 2008 - 1.27  
 FY 2009 - 1.45  
 FY 2010 - 1.26  
 FY 2011 - 1.20

**Unlinked Trips/Revenue Vehicle Hour**  
 FY 2007 - 25.34  
 FY 2008 - 23.97  
 FY 2009 - 27.22  
 FY 2010 - 23.75  
 FY 2011 - 23.73

### TRANSIT SERVICE OPERATIONS:

Day of Week	Service Hours
Monday - Friday	4:30am - 8:30pm
Saturday	4:30am - 8:30pm
Sunday	No Sunday Service

FY 2007 - 2011 Agency Summary

## Columbus Transit System (METRA)

814 Linwood Blvd., Columbus, GA 31902  
 Telephone: (706) 225-4581  
 Fax: (706) 225-4420  
 Director: Saundra L. Hunter  
 E-mail: [shunter@columbusga.org](mailto:shunter@columbusga.org)  
 Website: [www.metrotransit.com](http://www.metrotransit.com)

### SYSTEM FARES BY RIDER

Bus	Full Adult	Student	Child	Senior Citizen	Transfer	Other
Express	N/A	N/A	N/A	N/A	N/A	N/A
Local	\$1.30	\$1.00	\$1.00	\$0.65	N/A	N/A
Paratransit	\$2.50 One Way					

### GENERAL INFORMATION

2010 Urbanized Area (UZA)  
 Population: 189,885

**Operating Expense**  
 FY 2007 - \$14,686,138  
 FY 2008 - \$3,656,741  
 FY 2009 - \$3,772,005  
 FY 2010 - \$3,831,688  
 FY 2011 - \$4,348,688

### Operating Revenue

FY 2007 - \$1,066,297  
 FY 2008 - \$1,016,516  
 FY 2009 - \$1,020,154  
 FY 2010 - \$1,016,743  
 FY 2011 - \$1,194,427

### Annual Revenue Vehicle Hours

FY 2007 - 72,546  
 FY 2008 - 75,976  
 FY 2009 - 79,355  
 FY 2010 - 78,530  
 FY 2011 - 80,101

### Total Revenue Vehicles

FY 2007 - 40  
 FY 2008 - 43  
 FY 2009 - 41  
 FY 2010 - 34  
 FY 2011 - 42

### Peak Vehicle Usage

FY 2007 - 20  
 FY 2008 - 16  
 FY 2009 - 16  
 FY 2010 - 22  
 FY 2011 - 22

### SERVICE CONSUMPTION

#### Annual Unlinked Trips

FY 2007 - 972,089  
 FY 2008 - 1,074,791  
 FY 2009 - 1,070,725  
 FY 2010 - 1,070,802  
 FY 2011 - 1,081,510

#### Annual Passenger Miles

FY 2007 - 4,145,163  
 FY 2008 - 4,581,723  
 FY 2009 - 4,593,410  
 FY 2010 - 1,112,027  
 FY 2011 - 1,123,982

### PERFORMANCE INDICATORS

**Cost Efficiency**  
**Operating Expense/Revenue Vehicle Mile**  
 FY 2007 - \$3.34  
 FY 2008 - \$3.58  
 FY 2009 - \$3.60  
 FY 2010 - \$3.66  
 FY 2011 - \$4.12

**Operating Expense/Revenue Vehicle Hour**  
 FY 2007 - \$45.50  
 FY 2008 - \$48.13  
 FY 2009 - \$47.53  
 FY 2010 - \$48.72  
 FY 2011 - \$54.29

### COST EFFECTIVENESS

**Operating Expense/Unlinked Trip**  
 FY 2007 - \$3.40  
 FY 2008 - \$3.40  
 FY 2009 - \$3.52  
 FY 2010 - \$3.58  
 FY 2011 - \$4.02

**Operating Expense/Passenger Mile**  
 FY 2007 - \$3.34  
 FY 2008 - \$3.58  
 FY 2009 - \$3.60  
 FY 2010 - \$3.45  
 FY 2011 - \$3.86

#### Fare box Recovery Ratio

FY 2007 - 32%  
 FY 2008 - 28%  
 FY 2009 - 27%  
 FY 2010 - 27%  
 FY 2011 - 27%

### SERVICE EFFECTIVENESS

**Unlinked Trips/Revenue Vehicle Mile**  
 FY 2007 - 0.98  
 FY 2008 - 1.05  
 FY 2009 - 1.02  
 FY 2010 - 1.02  
 FY 2011 - 1.02

**Unlinked Trips/Revenue Vehicle Hour**  
 FY 2007 - 13.40  
 FY 2008 - 14.15  
 FY 2009 - 13.49  
 FY 2010 - 13.64  
 FY 2011 - 13.50

### TRANSIT SERVICE OPERATIONS:

Day of Week	Service Hours
Monday - Friday	4:45am - 8:00am, 1pm-11:30pm (am/pm Commuter Vanpools)
Saturday	4:45am - 7:30pm, 1pm-3:20pm
Sunday	Vanpools

FY 2007-2011 Agency Summary

## Douglas County Rideshare

8800 Dorris Road, Douglasville, GA 30339  
 Telephone: (770) 949-7665  
 Fax: (770) 920-7515  
 Multi-Modal Services Division Manager: Jim Watson  
 E-mail: jwatson@co.douglas.ga.us  
 Website: [douglascountrideshare.com](http://douglascountrideshare.com)

### SYSTEM FARES BY RIDER

Bus	Full Adult	Student	Child	Senior Citizen	Transfer	Other
Express	\$82-\$126/mo.	N/A	N/A	N/A	N/A	N/A
Local	N/A	N/A	N/A	N/A	N/A	N/A
Paratransit	N/A					

### GENERAL INFORMATION

2010 Urbanized Area (UZA)  
 Population: 132,403

#### Operating Expense

FY 2007 - \$459,580  
 FY 2008 - \$473,805  
 FY 2009 - \$605,986  
 FY 2010 - \$557,718  
 FY 2011 - \$623,791

#### Operating Revenue

FY 2007 - \$459,580  
 FY 2008 - \$277,786  
 FY 2009 - \$406,837  
 FY 2010 - \$718,259  
 FY 2011 - \$667,423

#### Annual Revenue Vehicle Hours

FY 2007 - 72,546  
 FY 2008 - 75,976  
 FY 2009 - 79,355  
 FY 2010 - 78,530  
 FY 2011 - 80,101

#### Total Revenue Vehicles

FY 2007 - 42  
 FY 2008 - 55  
 FY 2009 - 65  
 FY 2010 - 79  
 FY 2011 - 79

#### Peak Vehicle Usage

FY 2007 - 42  
 FY 2008 - 55  
 FY 2009 - 65  
 FY 2010 - 59  
 FY 2011 - 60

### SERVICE CONSUMPTION

#### Annual Unlinked Trips

FY 2007 - 114,725  
 FY 2008 - 128,016  
 FY 2009 - 161,186  
 FY 2010 - 153,620  
 FY 2011 - 170,604

#### Annual Passenger Miles

FY 2007 - 3,360,000  
 FY 2008 - 3,689,858  
 FY 2009 - 5,677,145  
 FY 2010 - 5,360,444  
 FY 2011 - 6,806,380

### PERFORMANCE INDICATORS

#### Cost Efficiency

**Operating Expense/Revenue Vehicle Mile**  
 FY 2007 - \$0.52  
 FY 2008 - \$0.55  
 FY 2009 - \$0.62  
 FY 2010 - \$0.75  
 FY 2011 - \$0.81

#### Operating Expense/Revenue Vehicle Hour

FY 2007 - \$25.55  
 FY 2008 - \$24.54  
 FY 2009 - \$25.73  
 FY 2010 - \$20.99  
 FY 2011 - \$20.85

### COST EFFECTIVENESS

#### Operating Expense/Unlinked Trip

FY 2007 - \$4.01  
 FY 2008 - \$3.70  
 FY 2009 - \$3.76  
 FY 2010 - \$3.63  
 FY 2011 - \$3.66

#### Operating Expense/Passenger Mile

FY 2007 - \$3.34  
 FY 2008 - \$3.58  
 FY 2009 - \$3.60  
 FY 2010 - \$3.45  
 FY 2011 - \$3.86

#### Fare box Recovery Ratio

FY 2007 - 100%  
 FY 2008 - 59%  
 FY 2009 - 67%  
 FY 2010 - 78%  
 FY 2011 - 93%

### SERVICE EFFECTIVENESS

#### Unlinked Trips/Revenue Vehicle Mile

FY 2007 - 0.20  
 FY 2008 - 0.20  
 FY 2009 - 0.16  
 FY 2010 - 0.15  
 FY 2011 - 0.14

#### Unlinked Trips/Revenue Vehicle Hour

FY 2007 - 6.38  
 FY 2008 - 6.63  
 FY 2009 - 6.84  
 FY 2010 - 6.18  
 FY 2011 - 5.70

### TRANSIT SERVICE OPERATIONS:

Day of Week	Service Hours
Monday - Friday	Express: 5:30am - 9:15am 3:00pm - 7:45pm
	Local: 5:20am - 10:30pm
	GRTA: 5:15am - 12:45pm - 7:50 pm
	Reverse Commute: 7:00 am - 9:20 am 3:10pm - 6:35pm
Saturday	Local: 6:10am - 9:05pm
Sunday	No Sunday Service

## Gwinnett County Transit (GCT)

75 Langley Drive, Lawrenceville, GA 30046-6935  
 Telephone: (770) 822-7446  
 Fax: (770) 822-7478  
 Transit Division Director: Phil Boyd  
 E-mail: phil.boyd@gwinnettcountry.com  
 Website: [www.gctransit.com](http://www.gctransit.com)

### SYSTEM FARES BY RIDER

Bus	Full Adult	Student	Child	Senior Citizen	Transfer	Other
Express	\$3/\$4	N/A	N/A	N/A	N/A	N/A
Local	\$2	N/A	Free	\$1	Free	N/A
Paratransit	\$3.50 (Free transfer to MARTA at Doraville Station, and Free transfer to Express and Local Gwinnett County Bus Service)					

### GENERAL INFORMATION

2010 Urbanized Area (UZA)  
 Population: 805,321

**Operating Expense**  
 FY 2007 - \$10,075,696  
 FY 2008 - \$12,634,009  
 FY 2009 - \$12,858,312  
 FY 2010 - \$12,381,831  
 FY 2011 - \$13,993,304

### Operating Revenue

FY 2007 - \$3,046,132  
 FY 2008 - \$3,104,296  
 FY 2009 - \$4,900,375  
 FY 2010 - \$4,401,435  
 FY 2011 - \$4,695,207

### Annual Revenue Vehicle Hours

FY 2007 - 177,146  
 FY 2008 - 137,236  
 FY 2009 - 137,572  
 FY 2010 - 157,634  
 FY 2011 - 134,845

### Total Revenue Vehicles

FY 2007 - 83  
 FY 2008 - 85  
 FY 2009 - 90  
 FY 2010 - 86  
 FY 2011 - 86

### Peak Vehicle Usage

FY 2007 - 71  
 FY 2008 - 67  
 FY 2009 - 74  
 FY 2010 - 59  
 FY 2011 - 68

### SERVICE CONSUMPTION

**Annual Unlinked Trips**  
 FY 2007 - 2,021,561  
 FY 2008 - 2,130,872  
 FY 2009 - 2,258,372  
 FY 2010 - 2,202,536  
 FY 2011 - 2,182,468

### Annual Passenger Miles

FY 2007 - 42,543,966  
 FY 2008 - 44,998,844  
 FY 2009 - 36,097,113  
 FY 2010 - 36,913,764  
 FY 2011 - 36,278,338

### PERFORMANCE INDICATORS

**Cost Efficiency**  
**Operating Expense/Revenue Vehicle Mile**  
 FY 2007 - \$3.95  
 FY 2008 - \$5.04  
 FY 2009 - \$4.99  
 FY 2010 - \$5.77  
 FY 2011 - \$5.53

**Operating Expense/Revenue Vehicle Hour**  
 FY 2007 - \$56.88  
 FY 2008 - \$92.06  
 FY 2009 - \$93.47  
 FY 2010 - \$96.36  
 FY 2011 - \$103.77

### COST EFFECTIVENESS

**Operating Expense/Unlinked Trip**  
 FY 2007 - \$4.01  
 FY 2008 - \$3.70  
 FY 2009 - \$3.76  
 FY 2010 - \$3.63  
 FY 2011 - \$3.66

**Operating Expense/Passenger Mile**  
 FY 2007 - \$2.36  
 FY 2008 - \$2.81  
 FY 2009 - \$3.60  
 FY 2010 - \$3.45  
 FY 2011 - \$3.86

**Fare box Recovery Ratio**  
 FY 2007 - 30%  
 FY 2008 - 25%  
 FY 2009 - 38%  
 FY 2010 - 33%  
 FY 2011 - 34%

### SERVICE EFFECTIVENESS

**Unlinked Trips/Revenue Vehicle Mile**  
 FY 2007 - 0.79  
 FY 2008 - 0.85  
 FY 2009 - 0.88  
 FY 2010 - 0.66  
 FY 2011 - 0.85

**Unlinked Trips/Revenue Vehicle Hour**  
 FY 2007 - 11.41  
 FY 2008 - 15.53  
 FY 2009 - 16.42  
 FY 2010 - 17.14  
 FY 2011 - 16.05

### TRANSIT SERVICE OPERATIONS:

Day of Week	Service Hours
Monday – Friday	6:30am - 6:00pm
Saturday	No Saturday Service
Sunday	No Sunday Service

FY 2007- 2011 Agency Summary

## Hall Area Transit (HAT)

687 Main Street  
 Gainesville, GA 30501  
 Telephone: (770) 287-3333  
 Fax: (770) 287-7317  
 Operations General Manager: Richard Ticehurst  
 E-mail: [rticehurst@gainesville.org](mailto:rticehurst@gainesville.org)  
 Website: [www.gainesville.org](http://www.gainesville.org)

### SYSTEM FARES BY RIDER

Bus	Full Adult	Student	Child	Senior Citizen	Transfer	Other
Express	N/A	N/A	N/A	N/A	N/A	N/A
Local	\$1.00	\$0.50	\$0.50	\$0.50	Free	N/A
Paratransit	Fare based on miles traveled					

### GENERAL INFORMATION

2010 Urbanized Area (UZA)  
 Population: 179,684

**Operating Expense**  
 FY 2007 - \$559,584  
 FY 2008 - \$641,791  
 FY 2009 - \$587,366  
 FY 2010 - \$1,212,661  
 FY 2011 - \$753,331

### Operating Revenue

FY 2007 - \$171,932  
 FY 2008 - \$177,712  
 FY 2009 - \$176,823  
 FY 2010 - \$253,196  
 FY 2011 - \$62,483

### Annual Revenue Vehicle Hours

FY 2007 - 11,835  
 FY 2008 - 11,455  
 FY 2009 - 11,391  
 FY 2010 - 21,182  
 FY 2011 - 19,671

### Total Revenue Vehicles

FY 2007 - 5  
 FY 2008 - 7  
 FY 2009 - 7  
 FY 2010 - 11  
 FY 2011 - 11

### Peak Vehicle Usage

FY 2007 - 4  
 FY 2008 - 4  
 FY 2009 - 4  
 FY 2010 - 8  
 FY 2011 - 8

### SERVICE CONSUMPTION

#### Annual Unlinked Trips

FY 2007 - 114,725  
 FY 2008 - 128,016  
 FY 2009 - 161,186  
 FY 2010 - 153,620  
 FY 2011 - 175,834

#### Annual Passenger Miles

FY 2007 - 171,932  
 FY 2008 - 177,712  
 FY 2009 - 176,823  
 FY 2010 - 118,368  
 FY 2011 - 274,497

### PERFORMANCE INDICATORS

**Cost Efficiency**  
**Operating Expense/Revenue Vehicle Mile**  
 FY 2007 - \$3.95  
 FY 2008 - \$5.04  
 FY 2009 - \$4.99  
 FY 2010 - \$5.77  
 FY 2011 - \$5.53

**Operating Expense/Revenue Vehicle Hour**  
 FY 2007 - \$56.88  
 FY 2008 - \$92.06  
 FY 2009 - \$93.47  
 FY 2010 - \$96.36  
 FY 2011 - \$38.30

### COST EFFECTIVENESS

**Operating Expense/Unlinked Trip**  
 FY 2007 - \$4.01  
 FY 2008 - \$3.70  
 FY 2009 - \$3.76  
 FY 2010 - \$3.63  
 FY 2011 - \$3.66

**Operating Expense/Passenger Mile**  
 FY 2007 - \$2.36  
 FY 2008 - \$2.81  
 FY 2009 - \$3.60  
 FY 2010 - \$3.45  
 FY 2011 - \$3.86

### Fare Box Recovery Ratio

FY 2007 - 30%  
 FY 2008 - 25%  
 FY 2009 - 38%  
 FY 2010 - 33%  
 FY 2011 - 34%

### SERVICE EFFECTIVENESS

**Unlinked Trips/Revenue Vehicle Mile**  
 FY 2007 - 0.79  
 FY 2008 - 0.85  
 FY 2009 - 0.88  
 FY 2010 - 0.66  
 FY 2011 - 0.85

**Unlinked Trips/Revenue Vehicle Hour**  
 FY 2007 - 6.38  
 FY 2008 - 6.63  
 FY 2009 - 6.84  
 FY 2010 - 6.18  
 FY 2011 - 8.94

### TRANSIT SERVICE OPERATIONS:

Day of Week	Service Hours
Monday - Friday	5:25am - 6:15pm 5:25am - 9:45pm
Saturday	8:00am - 9:42pm
Sunday	No Sunday Service

FY 2007- 2011 Agency Summary

## Liberty Transit (LT)

220 North Maple Drive  
 Hinesville, GA 31313  
 Telephone: (912) 877-1472  
 Fax: (912) 877-1473  
 General Manager: Theodis Jackson  
 E-mail: [theodis.jackson@veoliatransdev.com](mailto:theodis.jackson@veoliatransdev.com)  
 Website: [www.libertycounty.com](http://www.libertycounty.com)

### SYSTEM FARES BY RIDER

Bus	Full Adult	Student	Child	Senior Citizen	Transfer	Other
Express	N/A	N/A	N/A	N/A	N/A	N/A
Local	\$1.00	N/A	N/A	\$0.50	\$1.00	N/A
Paratransit	\$2.00 (Route Deviation Service)					

### GENERAL INFORMATION

2010 Urbanized Area (UZA)  
 Population: 63,453

**Operating Expense**  
 FY 2012 - \$1,188,072

**Operating Revenue**  
 FY 2011 - \$16,139

**Annual Revenue Vehicle Hours**  
 FY 2011 - 18,520

**Total Revenue Vehicles**  
 FY 2011 - 9

**Peak Vehicle Usage**  
 FY 2011 - 7

### SERVICE CONSUMPTION

**Annual Unlinked Trips**  
 FY 2011 -

**Annual Passenger Miles**  
 FY 2011 - 211,599

### PERFORMANCE INDICATORS

**Cost Efficiency**  
**Operating Expense/Revenue Vehicle Mile**  
 FY 2011 - \$5.61

**Operating Expense/Revenue Vehicle Hour**  
 FY 2011 - \$64.15

### COST EFFECTIVENESS

**Operating Expense/Unlinked Trip**  
 FY 2011 - \$

**Operating Expense/Passenger Mile**  
 FY 2011 - \$5.62

**Fare Box Recovery Ratio**  
 FY 2011 - 14%

### SERVICE EFFECTIVENESS

**Unlinked Trips/Revenue Vehicle Mile**  
 Unlinked Trips / Revenue Vehicle Mile  
 FY 2011 - 0.10

**Unlinked Trips/Revenue Vehicle Hour**  
 FY 2011 - 0.98

### TRANSIT SERVICE OPERATIONS:

Day of Week	Service Hours
Monday - Friday	5:20am - 11:00pm
Saturday	5:20am - 8:00pm
Sunday	No Sunday Service

FY 2007- 2011 Agency Summary

## Macon-Bibb County Transit Authority (MTA)

200 Cherry Street  
 Macon, GA 30201  
 Telephone: (478) 803-2500  
 Fax: (478) 803-2537  
 General Manager/ CEO: Richard L. Jones  
 E-mail: rjones@mta-mac.com  
 Website: www.mta-mac.com

### SYSTEM FARES BY RIDER

Bus	Full Adult	Student	Child	Senior Citizen	Transfer	Other
Express	\$3.00	N/A	\$0.75 or Free Height Factor	\$0.65	\$0.50	\$0.65 Disability
Local	\$1.25	\$0.75		\$0.50	\$1.00	N/A
Paratransit	\$2.00					

### GENERAL INFORMATION

2010 Urbanized Area (UZA)  
 Population: 155,547

**Operating Expense**  
 FY 2007 - \$3,634,827  
 FY 2008 - \$3,159,224  
 FY 2009 - \$3,413,128  
 FY 2010 - \$2,934,699  
 FY 2011 - \$5,609,658

### Operating Revenue

FY 2007 - \$990,537  
 FY 2008 - \$827,490  
 FY 2009 - \$1,090,646  
 FY 2010 - \$903,193  
 FY 2011 - \$4,886,112

### Annual Revenue Vehicle Hours

FY 2007 - 137,060  
 FY 2008 - 93,610  
 FY 2009 - 60,701  
 FY 2010 - 73,788  
 FY 2011 - 73,127

### Total Revenue Vehicles

FY 2007 - 26  
 FY 2008 - 28  
 FY 2009 - 28  
 FY 2010 - 27  
 FY 2011 - 26

### Peak Vehicle Usage

FY 2007 - 19  
 FY 2008 - 18  
 FY 2009 - 17  
 FY 2010 - 17  
 FY 2011 - 20

### SERVICE CONSUMPTION

#### Annual Unlinked Trips

FY 2007 - 1,181,198  
 FY 2008 - 1,166,738  
 FY 2009 - 1,032,010  
 FY 2010 - 748,392  
 FY 2011 - 799,461

#### Annual Passenger Miles

FY 2007 - 1,119,543  
 FY 2008 - 1,134,181  
 FY 2009 - 3,812,262  
 FY 2010 - 3,165,447  
 FY 2011 - 3,189,305

### PERFORMANCE INDICATORS

#### Cost Efficiency Operating Expense/Revenue Vehicle Mile

FY 2007 - \$3.13  
 FY 2008 - \$2.97  
 FY 2009 - \$3.26  
 FY 2010 - \$2.78  
 FY 2011 - \$5.62

#### Operating Expense/Revenue Vehicle Hour

FY 2007 - \$26.52  
 FY 2008 - \$37.79  
 FY 2009 - \$56.23  
 FY 2010 - \$39.77  
 FY 2011 - \$76.71

### COST EFFECTIVENESS

#### Operating Expense/Unlinked Trip

FY 2007 - \$4.01  
 FY 2008 - \$3.70  
 FY 2009 - \$3.76  
 FY 2010 - \$3.63  
 FY 2011 - \$3.66

#### Operating Expense/ Passenger Mile

FY 2007 - \$3.25  
 FY 2008 - \$2.79  
 FY 2009 - \$0.90  
 FY 2010 - \$0.93  
 FY 2011 - \$1.75

#### Fare Box Recovery Ratio

FY 2007 - 27%  
 FY 2008 - 31%  
 FY 2009 - 32%  
 FY 2010 - 31%  
 FY 2011 - 87%

### SERVICE EFFECTIVENESS

#### Unlinked Trips/ Revenue Vehicle Mile

FY 2007 - 1.02  
 FY 2008 - 1.10  
 FY 2009 - 0.98  
 FY 2010 - 0.71  
 FY 2011 - 0.80

#### Unlinked Trips/ Revenue Vehicle Hour

FY 2007 - 8.62  
 FY 2008 - 13.95  
 FY 2009 - 17.00  
 FY 2010 - 10.14  
 FY 2011 - 10.93

### TRANSIT SERVICE OPERATIONS:

Day of Week	Service Hours
Monday - Friday	Bus 3:30am - 1:35 am Rail 4:15am - 2:08am
Saturday	Bus 3:30am - 1:36 am Rail 4:35am - 1:53am
Sunday	Bus 3:30am - 1:35 am Rail 4:35am - 1:55am

FY 2007 - 2011 Agency Summary

## Metropolitan Atlanta Rapid Transit Authority (MARTA)

2424 Piedmont Rd.  
 Atlanta, GA 30324  
 Telephone: (404) 848-5000  
 Fax: (404) 848-4179  
 General Manager/ CEO: Beverly A. Scott, Ph.D.  
 E-mail: bscott@tsmarta.com  
 Website: [www.itsmarta.com](http://www.itsmarta.com)

### SYSTEM FARES BY RIDER

Transit Mode	Full Adult	Student	Child	Senior Citizen	Transfer	Other-Disabled
<b>Bus</b>						
Express	\$2.00	\$2.00	Free	\$0.90	Free	\$0.90
Local	\$2.00	\$2.00	Free	\$0.90	Free	\$0.90
Paratransit	N/A	N/A	N/A	N/A	N/A	\$3.60
<b>Rail (MARTA)</b>	\$2.00	\$2.00	Free	\$0.90	Free	\$0.90

### GENERAL INFORMATION

2010 Urbanized Area (UZA)  
 Population: 1,612,474

**Operating Expense**  
 FY 2007 - \$326,856,818  
 FY 2008 - \$364,630,000  
 FY 2009 - \$390,922,410  
 FY 2010 - \$395,907,832  
 FY 2011 - \$410,462,461

### Operating Revenue

FY 2007 - \$338,960,000  
 FY 2008 - \$355,293,000  
 FY 2009 - \$332,930,718  
 FY 2010 - \$375,858,371  
 FY 2011 - \$364,724,015

### Annual Revenue Vehicle Hours

FY 2007 - 38,793  
 FY 2008 - 38,044  
 FY 2009 - 41,893  
 FY 2010 - 40,492  
 FY 2011 - 39,268

### Total Revenue Vehicles

FY 2007 - 45  
 FY 2008 - 43  
 FY 2009 - 50  
 FY 2010 - 50  
 FY 2011 - 46

### Peak Vehicle Usage

FY 2007 - 26  
 FY 2008 - 29  
 FY 2009 - 29  
 FY 2010 - 32  
 FY 2011 - 32

### SERVICE CONSUMPTION

#### Annual Unlinked Trips

FY 2007 - 842,735  
 FY 2008 - 898,770  
 FY 2009 - 942,887  
 FY 2010 - 951,561  
 FY 2011 - 970,685

#### Annual Passenger Miles

FY 2007 - 472,251  
 FY 2008 - 470,415  
 FY 2009 - 474,428  
 FY 2010 - 465,680  
 FY 2011 - 459,932

### PERFORMANCE INDICATORS

#### Cost Efficiency

**Operating Expense/Revenue Vehicle Mile**  
 FY 2007 - \$3.13  
 FY 2008 - \$2.97  
 FY 2009 - \$3.26  
 FY 2010 - \$2.78  
 FY 2011 - \$5.62

#### Operating Expense/Revenue Vehicle Hour

FY 2007 - \$26.52  
 FY 2008 - \$37.79  
 FY 2009 - \$56.23  
 FY 2010 - \$39.77  
 FY 2011 - \$76.71

### COST EFFECTIVENESS

#### Operating Expense/Unlinked Trip

FY 2007 - \$4.01  
 FY 2008 - \$3.70  
 FY 2009 - \$3.76  
 FY 2010 - \$3.63  
 FY 2011 - \$3.66

#### Operating Expense/Passenger Mile

FY 2007 - \$3.25  
 FY 2008 - \$2.79  
 FY 2009 - \$0.90  
 FY 2010 - \$0.93  
 FY 2011 - \$1.75

#### Fare Box Recovery Ratio

FY 2007 - 27%  
 FY 2008 - 31%  
 FY 2009 - 32%  
 FY 2010 - 31%  
 FY 2011 - 87%

### SERVICE EFFECTIVENESS

#### Unlinked Trips/Revenue Vehicle Mile

FY 2007 - 1.02  
 FY 2008 - 1.10  
 FY 2009 - 0.98  
 FY 2010 - 0.71  
 FY 2011 - 0.80

#### Unlinked Trips/Revenue Vehicle Hour

FY 2007 - 8.62  
 FY 2008 - 13.95  
 FY 2009 - 17.00  
 FY 2010 - 10.14  
 FY 2011 - 10.93

### TRANSIT SERVICE OPERATIONS:

Day of Week	Service Hours
Monday - Friday	Bus 3:30am - 1:35 am Rail 4:15am - 2:08am
Saturday	Bus 3:30am - 1:36 am Rail 4:35am - 1:53am
Sunday	Bus 3:30am - 1:35 am Rail 4:35am - 1:55am



FY 2007 - 2011 Agency Summary

## Rome Transit Department (RTD)

168 North Avenue  
 Rome, GA 30161  
 Telephone: (706) 236-4523  
 Fax: (706) 236-4498  
 General Manager: Kathy B. Shealy  
 E-mail: [kshealy@romega.us](mailto:kshealy@romega.us)  
 Website: [www.romega.us](http://www.romega.us)

### SYSTEM FARES BY RIDER

Bus	Full Adult	Student	Child	Senior Citizen	Transfer	Other
Express	N/A	N/A	N/A	N/A	N/A	N/A
Local	\$1.00	\$0.50	Free	\$0.50	\$0.25	\$0.50
Paratransit	\$2.50					

### GENERAL INFORMATION

2010 Urbanized Area (UZA)  
 Population: 36,303

**Operating Expense**  
 FY 2007 - \$2,548,566  
 FY 2008 - \$2,927,369  
 FY 2009 - \$2,895,738  
 FY 2010 - \$2,854,315  
 FY 2011 - \$2,837,702

### Operating Revenue

FY 2007 - \$1,194,479  
 FY 2008 - \$1,240,056  
 FY 2009 - \$1,401,883  
 FY 2010 - \$1,425,378  
 FY 2011 - \$1,400,481

### Annual Revenue Vehicle Hours

FY 2007 - 137,060  
 FY 2008 - 93,610  
 FY 2009 - 60,701  
 FY 2010 - 73,788  
 FY 2011 - 73,127

### Total Revenue Vehicles

FY 2007 - 26  
 FY 2008 - 28  
 FY 2009 - 28  
 FY 2010 - 27  
 FY 2011 - 26

### Peak Vehicle Usage

FY 2007 - 19  
 FY 2008 - 18  
 FY 2009 - 17  
 FY 2010 - 17  
 FY 2011 - 20

### SERVICE CONSUMPTION

#### Annual Unlinked Trips

FY 2007 - 842,735  
 FY 2008 - 898,770  
 FY 2009 - 942,887  
 FY 2010 - 951,561  
 FY 2011 - 970,685

#### Annual Passenger Miles

FY 2007 - 472,251  
 FY 2008 - 470,415  
 FY 2009 - 474,428  
 FY 2010 - 465,680  
 FY 2011 - 459,932

### PERFORMANCE INDICATORS

#### Cost Efficiency Operating Expense/Revenue Vehicle Mile

FY 2007 - \$3.13  
 FY 2008 - \$2.97  
 FY 2009 - \$3.26  
 FY 2010 - \$2.78  
 FY 2011 - \$5.62

#### Operating Expense/Revenue Vehicle Hour

FY 2007 - \$26.52  
 FY 2008 - \$37.79  
 FY 2009 - \$56.23  
 FY 2010 - \$39.77  
 FY 2011 - \$76.71

### COST EFFECTIVENESS

#### Operating Expense/Unlinked Trip

FY 2007 - \$4.01  
 FY 2008 - \$3.70  
 FY 2009 - \$3.76  
 FY 2010 - \$3.63  
 FY 2011 - \$3.66

#### Operating Expense/ Passenger Mile

FY 2007 - \$3.25  
 FY 2008 - \$2.79  
 FY 2009 - \$0.90  
 FY 2010 - \$0.93  
 FY 2011 - \$1.75

#### Fare Box Recovery Ratio

FY 2007 - 27%  
 FY 2008 - 31%  
 FY 2009 - 32%  
 FY 2010 - 31%  
 FY 2011 - 87%

### SERVICE EFFECTIVENESS

#### Unlinked Trips/ Revenue Vehicle Mile

FY 2007 - 1.02  
 FY 2008 - 1.10  
 FY 2009 - 0.98  
 FY 2010 - 0.71  
 FY 2011 - 0.80

#### Unlinked Trips/ Revenue Vehicle Hour

FY 2007 - 8.62  
 FY 2008 - 13.95  
 FY 2009 - 17.00  
 FY 2010 - 10.14  
 FY 2011 - 10.93

### TRANSIT SERVICE OPERATIONS:

Day of Week	Service Hours
Monday - Friday	5:40am - 6:30pm
Saturday	No Saturday Service
Sunday	No Sunday Service

## **Douglas County Rideshare**

- Operating Expenses (2010): \$557,718
- Total Unlinked Trips (2010): 153,620
- Annual Vehicle Revenue Miles (2010): 1,008,442
- Types Grant Federal Funding Received (2010): 5303, 5307, 5309, 5311





## Transit Program Summary

The Georgia Department of Transportation applied for approximately \$82,359,125 in transit funding in 2010.

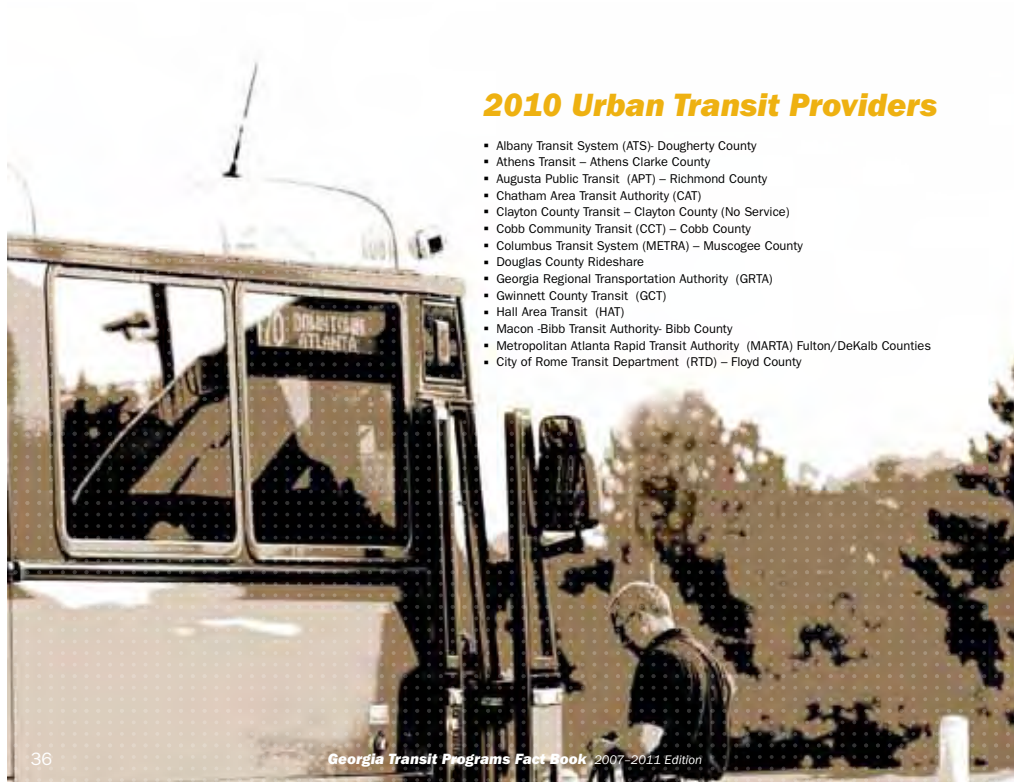
- The Georgia Department of Transportation supplied a state match of approximately \$6,638,550 urban and rural transit programs.
- There are 110 counties, 14 urban transit systems and 15 MPO's receiving transit funding assistance.
- In 2010 rural counties contained 489 vehicles in their fleet purchased with federal and/or state funding assistance.
- Of the 489 rural funded transit vehicles, 353 vehicles are ADA accessible.
- There are a total of 712 vehicles in the urban system fleets (not including MARTA).

## Grant Funding Requested

- Section 5303 (Planning) - \$3,627,159
- Section 5307 (Planning/Operating/Capital) - \$20,690,261
- Section 5309 (Earmarks- Capital) - \$6,244,054
- Section 5311 (Operating/Capital) - \$43,680,181
- Section 5316 (Operating/Capital) - \$4,966,435
- Section 5317 (Operating/Capital) - \$3,151,035

Total Federal Funds Received - \$82,359,125





## 2010 Urban Transit Providers

- Albany Transit System (ATS)- Dougherty County
- Athens Transit – Athens Clarke County
- Augusta Public Transit (APT) – Richmond County
- Chatham Area Transit Authority (CAT)
- Clayton County Transit – Clayton County (No Service)
- Cobb Community Transit (CCT) – Cobb County
- Columbus Transit System (METRA) – Muscogee County
- Douglas County Rideshare
- Georgia Regional Transportation Authority (GRTA)
- Gwinnett County Transit (GCT)
- Hall Area Transit (HAT)
- Macon- Bibb Transit Authority- Bibb County
- Metropolitan Atlanta Rapid Transit Authority (MARTA) Fulton/DeKalb Counties
- City of Rome Transit Department (RTD) – Floyd County

## 2010 Urban Transit Providers

### Albany Transit System (ATS)

- Operating Expenses (2010): \$2,485,555
- Total Unlinked Trips (2010): 874,092
- Annual Vehicle Revenue Miles (2010): 628,656
- Types Grant Federal Funding Received (2010): 5303, 5307, 5309,5311(f)

### Athens Transit (Athens- Clarke County)

- Operating Expenses (2010): \$4,658,647
- Total Unlinked Trips (2010): 1,779,819
- Annual Vehicle Revenue Miles (2010): 851,972
- Types Grant Federal Funding Received (2010): 5307, 5309,5311

### Augusta Public Transit (Richmond County)

- Operating Expenses (2010): \$4,612,528
- Total Unlinked Trips (2010): 563,404
- Annual Vehicle Revenue Miles (2010): 598,153
- Types Grant Federal Funding Received (2010): 5303, 5307, 5309, 5311

### Chatham Area Transit Authority (CAT)

- Operating Expenses (2010): \$16,213,442
- Total Unlinked Trips (2010): 3,347,939
- Annual Vehicle Revenue Miles (2010): 2,499,628
- Types Grant Federal Funding Received (2010): 5303, 5307, 5309

### Cobb Community Transit (CCT)

- Operating Expenses (2010): \$18,882,590
- Total Unlinked Trips (2010): 4,469,187
- Annual Vehicle Revenue Miles (2010): 3,554,493
- Types Grant Federal Funding Received (2010): 5303, 5307, 5309, 5311

### Columbus Transit System (METRA)

- Operating Expenses (2010): \$3,831,688
- Total Unlinked Trips (2010): 1,070,802
- Annual Vehicle Revenue Miles (2010): 1,046,033
- Types Grant Federal Funding Received (2010): 5303, 5307, 5309, 5311

### Douglas County Rideshare

- Operating Expenses (2010): \$557,718
- Total Unlinked Trips (2010): 153,620
- Annual Vehicle Revenue Miles (2010): 1,008,442
- Types Grant Federal Funding Received (2010): 5303, 5307, 5309, 5311

## 2010 Urban Transit Providers

### Georgia Regional Transportation Authority (GRTA)

- Operating Expenses (2010): \$151,185,275
- Total Unlinked Trips (2010): 1,444,265
- Annual Vehicle Revenue Miles (2010): 2,186,008
- Types Grant Federal Funding Received (2010): 5303, 5307, 5309, 5311

### Gwinnett County Transit (GCT)

- Operating Expenses (2010): \$12,381,831
- Total Unlinked Trips (2010): 2,202,536
- Annual Vehicle Revenue Miles (2010): 2,147,923
- Types Grant Federal Funding Received (2010): 5303, 5307, 5309, 5311

### Hall Area Transit (HAT)

- Operating Expenses (2010): \$1,212,661
- Total Unlinked Trips (2010): 27,300
- Annual Vehicle Revenue Miles (2010): 253,196
- Types Grant Federal Funding Received (2010): 5303, 5307, 5309, 5311



### Macon-Bibb Transit Authority

- Operating Expenses (2010): \$2,934,699
- Total Unlinked Trips (2010): 748,392
- Annual Vehicle Revenue Miles (2010): 1,054,436
- Types Grant Federal Funding Received (2010): 5303, 5307, 5309, 5311

### Metropolitan Atlanta Rapid Transit Authority (MARTA)

- Operating Expenses (2010): 395,907,832
- Total Unlinked Trips (2010): Bus: 68,008,889 Rail: 77,732,006
- Annual Vehicle Revenue Miles (2010): 55,177,391
- Types Grant Federal Funding Received (2010): 5303, 5307, 5309, 5311

### City of Rome Transit Department (RTD)

- Operating Expenses (2010): \$2,854,315
- Total Unlinked Trips (2010): 951,561
- Annual Vehicle Revenue Miles (2010): 593,820
- Types Grant Federal Funding Received (2010): 5303, 5307, 5309, 5311



## 2010 Rural Transit Providers

### Bacon County

- Operating Expenses (2010): \$105,702
- Capital Expenses (2010): \$0
- Total Unlinked Trips (2010): 10,560
- Annual Vehicle Revenue Miles (2010): 38,112
- Types Grant Federal Funding Received (2010): 5311

### Baldwin County Transit

- Operating Expenses (2010): \$101,246
- Capital Expenses (2010): \$24,400
- Total Unlinked Trips (2010): 11,285
- Annual Vehicle Revenue Miles (2010): 71,480
- Types Grant Federal Funding Received (2010): 5311

### Banks County Transit

- Operating Expenses (2010): \$63,504
- Capital Expenses (2010): \$84,550
- Total Unlinked Trips (2010): 2,443
- Annual Vehicle Revenue Miles (2010): 42,515
- Types Grant Federal Funding Received (2010): 5311

### Bartow Transit

- Operating Expenses (2010): \$380,060
- Capital Expenses (2010): \$201,800
- Total Unlinked Trips (2010): 33,225
- Annual Vehicle Revenue Miles (2010): 222,042
- Types Grant Federal Funding Received (2010): 5311

### Berrien County

- Operating Expenses (2010): \$104,105
- Capital Expenses (2010): \$38,709
- Total Unlinked Trips (2010): 712
- Annual Vehicle Revenue Miles (2010): 88,170
- Types Grant Federal Funding Received (2010): 5311

### Bleckley County Transit

- Operating Expenses (2010): \$131,800
- Capital Expenses (2010): \$109,900
- Total Unlinked Trips (2010): 18,404
- Annual Vehicle Revenue Miles (2010): 100,791
- Types Grant Federal Funding Received (2010): 5311

### Brooks County Transit

- Operating Expenses (2010): \$197,708
- Capital Expenses (2010): \$154,712
- Total Unlinked Trips (2010): 473
- Annual Vehicle Revenue Miles (2010): 185,153
- Types Grant Federal Funding Received (2010): 5311

### Catoosa County

- Operating Expenses (2010): \$474,049
- Capital Expenses (2010): \$176,330
- Total Unlinked Trips (2010): 22,827
- Annual Vehicle Revenue Miles (2010): 166,075
- Types Grant Federal Funding Received (2010): 5311

### Chattooga County Transit

- Operating Expenses (2010): \$140,847
- Capital Expenses (2010): \$31,200
- Total Unlinked Trips (2010): 21,172
- Annual Vehicle Revenue Miles (2010): 94,926
- Types Grant Federal Funding Received (2010): 5311

### Cherokee County Transit

- Operating Expenses (2010): \$506,376
- Capital Expenses (2010): \$301,500
- Total Unlinked Trips (2010): 63,297
- Annual Vehicle Revenue Miles (2010): 295,652
- Types Grant Federal Funding Received (2010): 5311

### City of Americus

- Operating Expenses (2010): \$162,430
- Capital Expenses (2010): \$45,200
- Total Unlinked Trips (2010): 25,080
- Annual Vehicle Revenue Miles (2010): 68,757
- Types Grant Federal Funding Received (2010): 5311

### City of Cedartown

- Operating Expenses (2010): \$54,049
- Capital Expenses (2010): \$0
- Total Unlinked Trips (2010): 14,877
- Annual Vehicle Revenue Miles (2010): 21,046
- Types Grant Federal Funding Received (2010): 5311

### City of Unadilla

- Operating Expenses (2010): \$97,804
- Capital Expenses (2010): \$0
- Total Unlinked Trips (2010): 5,955
- Annual Vehicle Revenue Miles (2010): 69,899
- Types Grant Federal Funding Received (2010): 5311

### City of Vienna

- Operating Expenses (2010): \$114,934
- Capital Expenses (2010): \$267,040
- Total Unlinked Trips (2010): 11,457
- Annual Vehicle Revenue Miles (2010): 137,899
- Types Grant Federal Funding Received (2010): 5311

### Clay County

- Operating Expenses (2010): \$277,930
- Capital Expenses (2010): \$38,547
- Total Unlinked Trips (2010): 1,762
- Annual Vehicle Revenue Miles (2010): 172,082
- Types Grant Federal Funding Received (2010): 5311

### Coastal Regional Commission

- Operating Expenses (2010): \$1,935,741
- Capital Expenses (2010): \$1,636,453
- Total Unlinked Trips (2010): 134,460
- Annual Vehicle Revenue Miles (2010): 1,207,980
- Types Grant Federal Funding Received (2010): 5311

### Columbia County Commission Transit

- Operating Expenses (2010): \$363,410
- Capital Expenses (2010): \$412,902
- Total Unlinked Trips (2010): 25,956
- Annual Vehicle Revenue Miles (2010): 147,248
- Types Grant Federal Funding Received (2010): 5311

### Cook County Transit

- Operating Expenses (2010): \$322,024
- Capital Expenses (2010): \$197,961
- Total Unlinked Trips (2010): 3,308
- Annual Vehicle Revenue Miles (2010): 266,651
- Types Grant Federal Funding Received (2010): 5311

## 2010 Rural Transit Providers

### Coweta County

- Operating Expenses (2010): \$191,805
- Capital Expenses (2010): \$20,800
- Total Unlinked Trips (2010): 25,024
- Annual Vehicle Revenue Miles (2010): 177,764
- Types Grant Federal Funding Received (2010): 5311

### Crawford County Transit

- Operating Expenses (2010): \$86,864
- Capital Expenses (2010): \$20,800
- Total Unlinked Trips (2010): 8,215
- Annual Vehicle Revenue Miles (2010): 80,257
- Types Grant Federal Funding Received (2010): 5311

### Crisp County Transit

- Operating Expenses (2010): \$367,797
- Capital Expenses (2010): \$0
- Total Unlinked Trips (2010): 10,590
- Annual Vehicle Revenue Miles (2010): 149,047
- Types Grant Federal Funding Received (2010): 5311

### Dade County Transit

- Operating Expenses (2010): \$176,419
- Capital Expenses (2010): \$117,100
- Total Unlinked Trips (2010): 26,327
- Annual Vehicle Revenue Miles (2010): 87,456
- Types Grant Federal Funding Received (2010): 5311

### Dawson County Transit

- Operating Expenses (2010): \$193,641
- Capital Expenses (2010): \$51,925
- Total Unlinked Trips (2010): 9,674
- Annual Vehicle Revenue Miles (2010): 94,908
- Types Grant Federal Funding Received (2010): 5311

### Dodge County Transit

- Operating Expenses (2010): \$177,076
- Capital Expenses (2010): \$67,200
- Total Unlinked Trips (2010): 25,725
- Annual Vehicle Revenue Miles (2010): 103,807
- Types Grant Federal Funding Received (2010): 5311

### Elbert County Transit

- Operating Expenses (2010): \$141,290
- Capital Expenses (2010): \$17,300
- Total Unlinked Trips (2010): 12,002
- Annual Vehicle Revenue Miles (2010): 52,212
- Types Grant Federal Funding Received (2010): 5311

### Fannin County Transit

- Operating Expenses (2010): \$204,983
- Capital Expenses (2010): \$127,246
- Total Unlinked Trips (2010): 15,872
- Annual Vehicle Revenue Miles (2010): 112,145
- Types Grant Federal Funding Received (2010): 5311

### Forsyth County Public Transportation

- Operating Expenses (2010): \$370,232
- Capital Expenses (2010): \$177,696
- Total Unlinked Trips (2010): 16,811
- Annual Vehicle Revenue Miles (2010): 168,170
- Types Grant Federal Funding Received (2010): 5311

### Gilmer County Transit System

- Operating Expenses (2010): \$150,256
- Capital Expenses (2010): \$112,400
- Total Unlinked Trips (2010): 9,615
- Annual Vehicle Revenue Miles (2010): 76,775
- Types Grant Federal Funding Received (2010): 5311

### Glascock County Transit

- Operating Expenses (2010): \$71,039
- Capital Expenses (2010): \$50,400
- Total Unlinked Trips (2010): 11,299
- Annual Vehicle Revenue Miles (2010): 43,961
- Types Grant Federal Funding Received (2010): 5311

### Gordon County Transit

- Operating Expenses (2010): \$160,412
- Capital Expenses (2010): \$20,800
- Total Unlinked Trips (2010): 10,145
- Annual Vehicle Revenue Miles (2010): 71,991
- Types Grant Federal Funding Received (2010): 5311

### Greene County Commission Transit

- Operating Expenses (2010): \$292,329
- Capital Expenses (2010): \$118,200
- Total Unlinked Trips (2010): 26,093
- Annual Vehicle Revenue Miles (2010): 220,878
- Types Grant Federal Funding Received (2010): 5311

### Habersham County Transit

- Operating Expenses (2010): \$48,110
- Capital Expenses (2010): \$69,300
- Total Unlinked Trips (2010): 3,390
- Annual Vehicle Revenue Miles (2010): 25,819
- Types Grant Federal Funding Received (2010): 5311

## 2010 Rural Transit Providers

### Hall County Transit

- Operating Expenses (2010): \$520,153
- Capital Expenses (2010): \$7,242
- Total Unlinked Trips (2010): 21,921
- Annual Vehicle Revenue Miles (2010): 201,941
- Types Grant Federal Funding Received (2010): 5311

### Hancock County Transit

- Operating Expenses (2010): \$139,037
- Capital Expenses (2010): \$68,500
- Total Unlinked Trips (2010): 20,093
- Annual Vehicle Revenue Miles (2010): 104,434
- Types Grant Federal Funding Received (2010): 5311

### Haralson County Transit

- Operating Expenses (2010): \$119,501
- Capital Expenses (2010): \$114,500
- Total Unlinked Trips (2010): 13,926
- Annual Vehicle Revenue Miles (2010): 64,396
- Types Grant Federal Funding Received (2010): 5311

### Hart County Public Transit

- Operating Expenses (2010): \$36,484
- Capital Expenses (2010): \$24,100
- Total Unlinked Trips (2010): 2,822
- Annual Vehicle Revenue Miles (2010): 19,057
- Types Grant Federal Funding Received (2010): 5311

### Heard County Transit

- Operating Expenses (2010): \$120,741
- Capital Expenses (2010): \$21,436
- Total Unlinked Trips (2010): 3,940
- Annual Vehicle Revenue Miles (2010): 34,884
- Types Grant Federal Funding Received (2010): 5311

### Henry County Transit

- Operating Expenses (2010): \$651,003
- Capital Expenses (2010): \$318,100
- Total Unlinked Trips (2010): 61,338
- Annual Vehicle Revenue Miles (2010): 362,860
- Types Grant Federal Funding Received (2010): 5311

### Jackson County Transit

- Operating Expenses (2010): \$104,033
- Capital Expenses (2010): \$48,500
- Total Unlinked Trips (2010): 2,422
- Annual Vehicle Revenue Miles (2010): 53,633
- Types Grant Federal Funding Received (2010): 5311

### Jefferson County Transit

- Operating Expenses (2010): \$299,288
- Capital Expenses (2010): \$123,850
- Total Unlinked Trips (2010): 29,827
- Annual Vehicle Revenue Miles (2010): 191,658
- Types Grant Federal Funding Received (2010): 5311

### Jenkins County Transit

- Operating Expenses (2010): \$48,130
- Capital Expenses (2010): \$88,900
- Total Unlinked Trips (2010): 5,849
- Annual Vehicle Revenue Miles (2010): 16,462
- Types Grant Federal Funding Received (2010): 5311

### Jones County Transit

- Operating Expenses (2010): \$139,105
- Capital Expenses (2010): \$20,800
- Total Unlinked Trips (2010): 5,335
- Annual Vehicle Revenue Miles (2010): 46,464
- Types Grant Federal Funding Received (2010): 5311

### Lincoln County Transit

- Operating Expenses (2010): \$70,921
- Capital Expenses (2010): \$88,900
- Total Unlinked Trips (2010): 14,687
- Annual Vehicle Revenue Miles (2010): 49,932
- Types Grant Federal Funding Received (2010): 5311

### Lowndes County

- Operating Expenses (2010): \$278,504
- Capital Expenses (2010): \$38,861
- Total Unlinked Trips (2010): 9,842
- Annual Vehicle Revenue Miles (2010): 193,543
- Types Grant Federal Funding Received (2010): 5311

### Lumpkin County

- Operating Expenses (2010): \$78,749
- Capital Expenses (2010): \$48,500
- Total Unlinked Trips (2010): 4,661
- Annual Vehicle Revenue Miles (2010): 30,207
- Types Grant Federal Funding Received (2010): 5311



## 2010 Rural Transit Providers

### **Macon County Transit**

- Operating Expenses (2010): \$87,000
- Capital Expenses (2010): \$20,800
- Total Unlinked Trips (2010): 4,496
- Annual Vehicle Revenue Miles (2010): 36,917
- Types Grant Federal Funding Received (2010): 5311

### **McDuffie County Commission Transit**

- Operating Expenses (2010): \$200,674
- Capital Expenses (2010): \$104,516
- Total Unlinked Trips (2010): 42,192
- Annual Vehicle Revenue Miles (2010): 97,446
- Types Grant Federal Funding Received (2010): 5311

### **Montgomery County Transit**

- Operating Expenses (2010): \$81,025
- Capital Expenses (2010): \$0
- Total Unlinked Trips (2010): 4,200
- Annual Vehicle Revenue Miles (2010): 41,616
- Types Grant Federal Funding Received (2010): 5311

### **Morgan County Transit**

- Operating Expenses (2010): \$241,332
- Capital Expenses (2010): \$171,405
- Total Unlinked Trips (2010): 24,177
- Annual Vehicle Revenue Miles (2010): 126,253
- Types Grant Federal Funding Received (2010): 5311

### **Murray County Transportation System**

- Operating Expenses (2010): \$119,833
- Capital Expenses (2010): \$154,800
- Total Unlinked Trips (2010): 24,527
- Annual Vehicle Revenue Miles (2010): 148,879
- Types Grant Federal Funding Received (2010): 5311

### **Paulding County**

- Operating Expenses (2010): \$221,824
- Capital Expenses (2010): \$72,400
- Total Unlinked Trips (2010): 34,701
- Annual Vehicle Revenue Miles (2010): 112,271
- Types Grant Federal Funding Received (2010): 5311

### **Peach County Transit**

- Operating Expenses (2010): \$156,581
- Capital Expenses (2010): \$82,600
- Total Unlinked Trips (2010): 14,345
- Annual Vehicle Revenue Miles (2010): 122,976
- Types Grant Federal Funding Received (2010): 5311

### **Pickens County**

- Operating Expenses (2010): \$145,233
- Capital Expenses (2010): \$118,200
- Total Unlinked Trips (2010): 12,994
- Annual Vehicle Revenue Miles (2010): 78,721
- Types Grant Federal Funding Received (2010): 5311

### **Pierce County Transit**

- Operating Expenses (2010): \$307,071
- Capital Expenses (2010): \$75,401
- Total Unlinked Trips (2010): 19,068
- Annual Vehicle Revenue Miles (2010): 251,496
- Types Grant Federal Funding Received (2010): 5311

### **Pulaski County Transit**

- Operating Expenses (2010): \$51,787
- Capital Expenses (2010): \$22,200
- Total Unlinked Trips (2010): 4,868
- Annual Vehicle Revenue Miles (2010): 26,551
- Types Grant Federal Funding Received (2010): 5311

### **Putnam County Commission Transit**

- Operating Expenses (2010): \$237,242
- Capital Expenses (2010): \$22,600
- Total Unlinked Trips (2010): 23,184
- Annual Vehicle Revenue Miles (2010): 98,269
- Types Grant Federal Funding Received (2010): 5311

### **Quitman County Transit**

- Operating Expenses (2010): \$302,322
- Capital Expenses (2010): \$146,335
- Total Unlinked Trips (2010): 3,589
- Annual Vehicle Revenue Miles (2010): 219,523
- Types Grant Federal Funding Received (2010): 5311

### **Rabun County**

- Operating Expenses (2010): \$95,094
- Capital Expenses (2010): \$42,384
- Total Unlinked Trips (2010): 7,401
- Annual Vehicle Revenue Miles (2010): 88,580
- Types Grant Federal Funding Received (2010): 5311

### **Richmond County Commission Transit**

- Operating Expenses (2010): \$165,387
- Capital Expenses (2010): \$261,850
- Total Unlinked Trips (2010): 7,849
- Annual Vehicle Revenue Miles (2010): 116,617
- Types Grant Federal Funding Received (2010): 5311

## 2010 Rural Transit Providers

### Social Circle Area Transit

- Operating Expenses (2010): \$54,101
- Capital Expenses (2010): \$69,985
- Total Unlinked Trips (2010): 6,093
- Annual Vehicle Revenue Miles (2010): 22,076
- Types Grant Federal Funding Received (2010): 5311

### Southwest Georgia Regional Commission

- Operating Expenses (2010): \$4,332,097
- Capital Expenses (2010): \$1,474,940
- Total Unlinked Trips (2010): 129,318
- Annual Vehicle Revenue Miles (2010): 3,495,146
- Types Grant Federal Funding Received (2010): 5311

### Talbot County Transit

- Operating Expenses (2010): \$224,062
- Capital Expenses (2010): \$72,400
- Total Unlinked Trips (2010): 34,151
- Annual Vehicle Revenue Miles (2010): 183,950
- Types Grant Federal Funding Received (2010): 5311

### Taliaferro County Board of Commissioners

- Operating Expenses (2010): \$55,012
- Capital Expenses (2010): \$22,600
- Total Unlinked Trips (2010): 9,132
- Annual Vehicle Revenue Miles (2010): 44,848
- Types Grant Federal Funding Received (2010): 5311

### Tattnall County Transit

- Operating Expenses (2010): \$194,921
- Capital Expenses (2010): \$114,436
- Total Unlinked Trips (2010): 10,152
- Annual Vehicle Revenue Miles (2010): 300,384
- Types Grant Federal Funding Received (2010): 5311

### Taylor County Transit

- Operating Expenses (2010): \$143,018
- Capital Expenses (2010): \$39,494
- Total Unlinked Trips (2010): 14,368
- Annual Vehicle Revenue Miles (2010): 125,676
- Types Grant Federal Funding Received (2010): 5311

### Telfair County Transit

- Operating Expenses (2010): \$123,551
- Capital Expenses (2010): \$39,524
- Total Unlinked Trips (2010): 5,472
- Annual Vehicle Revenue Miles (2010): 37,368
- Types Grant Federal Funding Received (2010): 5311

### Thomas County Transit

- Operating Expenses (2010): \$966,131
- Capital Expenses (2010): \$132,612
- Total Unlinked Trips (2010): 37,545
- Annual Vehicle Revenue Miles (2010): 615,668
- Types Grant Federal Funding Received (2010): 5311

### Three Rivers Regional Commission

- Operating Expenses (2010): \$558,801
- Capital Expenses (2010): \$237,200
- Total Unlinked Trips (2010): 71,140
- Annual Vehicle Revenue Miles (2010): 492,256
- Types Grant Federal Funding Received (2010): 5311

### Tift Transit System

- Operating Expenses (2010): \$207,082
- Capital Expenses (2010): \$0
- Total Unlinked Trips (2010): 10,598
- Annual Vehicle Revenue Miles (2010): 70,890
- Types Grant Federal Funding Received (2010): 5311

### Towns County

- Operating Expenses (2010): \$55,123
- Capital Expenses (2010): \$115,600
- Total Unlinked Trips (2010): 1,585
- Annual Vehicle Revenue Miles (2010): 22,900
- Types Grant Federal Funding Received (2010): 5311

### Treutlen County Commission

- Operating Expenses (2010): \$47,568
- Capital Expenses (2010): \$20,800
- Total Unlinked Trips (2010): 3,977
- Annual Vehicle Revenue Miles (2010): 13,337
- Types Grant Federal Funding Received (2010): 5311

### Troup County Transit

- Operating Expenses (2010): \$159,548
- Capital Expenses (2010): \$118,100
- Total Unlinked Trips (2010): 17,115
- Annual Vehicle Revenue Miles (2010): 69,045
- Types Grant Federal Funding Received (2010): 5311

### Turner County Transit

- Operating Expenses (2010): \$110,170
- Capital Expenses (2010): \$0
- Total Unlinked Trips (2010): 776
- Annual Vehicle Revenue Miles (2010): 55,266
- Types Grant Federal Funding Received (2010): 5311

### Twiggs County Transit

- Operating Expenses (2010): \$109,339
- Capital Expenses (2010): \$63,800
- Total Unlinked Trips (2010): 8,197
- Annual Vehicle Revenue Miles (2010): 79,344
- Types Grant Federal Funding Received (2010): 5311

### Union County Transit

- Operating Expenses (2010): \$42,286
- Capital Expenses (2010): \$114,500
- Total Unlinked Trips (2010): 4,151
- Annual Vehicle Revenue Miles (2010): 36,398
- Types Grant Federal Funding Received (2010): 5311

### Walker County Transit

- Operating Expenses (2010): \$587,711
- Capital Expenses (2010): \$52,515
- Total Unlinked Trips (2010): 25,064
- Annual Vehicle Revenue Miles (2010): 433,135
- Types Grant Federal Funding Received (2010): 5311

### Ware County

- Operating Expenses (2010): \$257,258
- Capital Expenses (2010): \$77,722
- Total Unlinked Trips (2010): 9,264
- Annual Vehicle Revenue Miles (2010): 76,846
- Types Grant Federal Funding Received (2010): 5311

## 2010 Rural Transit Providers

### Warren County Commission Transit

- Operating Expenses (2010): \$83,746
- Capital Expenses (2010): \$65,050
- Total Unlinked Trips (2010): 21,257
- Annual Vehicle Revenue Miles (2010): 53,967
- Types Grant Federal Funding Received (2010): 5311

### Wayne County Transit

- Operating Expenses (2010): \$270,628
- Capital Expenses (2010): \$260,014
- Total Unlinked Trips (2010): 29,484
- Annual Vehicle Revenue Miles (2010): 353,808
- Types Grant Federal Funding Received (2010): 5311

### Wheeler County Transit

- Operating Expenses (2010): \$111,893
- Capital Expenses (2010): \$0
- Total Unlinked Trips (2010): 7,688
- Annual Vehicle Revenue Miles (2010): 54,288
- Types Grant Federal Funding Received (2010): 5311

### Whitfield County W.T.S.

- Operating Expenses (2010): \$464,701
- Capital Expenses (2010): \$0
- Total Unlinked Trips (2010): 33,935
- Annual Vehicle Revenue Miles (2010): 200,717
- Types Grant Federal Funding Received (2010): 5311

### Wilcox County Transit

- Operating Expenses (2010): \$85,209
- Capital Expenses (2010): \$0
- Total Unlinked Trips (2010): 5,804
- Annual Vehicle Revenue Miles (2010): 58,483
- Types Grant Federal Funding Received (2010): 5311

### Wilkes County Commission Transit

- Operating Expenses (2010): \$154,402
- Capital Expenses (2010): \$32,800
- Total Unlinked Trips (2010): 15,650
- Annual Vehicle Revenue Miles (2010): 100,593
- Types Grant Federal Funding Received (2010): 5311

### Wilkinson County Commission Transit

- Operating Expenses (2010): \$107,345
- Capital Expenses (2010): \$22,600
- Total Unlinked Trips (2010): 8,052
- Annual Vehicle Revenue Miles (2010): 97,684
- Types Grant Federal Funding Received (2010): 5311



## FY 2000 Park & Ride Lots

DISTRICT	PR #	COUNTY	LOT NAME/LOCATION	SPACES	DISTRICT	PR #	COUNTY	LOT NAME/LOCATION	SPACES		
1	1	103	Gwinnett	Hewatt Rd. East of US 78-Near Snellville	40	31	4	401	Worth	Pope Street & SR 520, 33 112 - Sylverster	15
2	1	105	Gwinnett	I- 85 & Indian Trail Rd. -Near Duluth	506	32	4	402	Lee	SR 32 & US 19 - Leesburg	15
3	1	107	Gwinnett	I-985 & SR 20	335	33	4	403	Crisp	I-75 & SR 300	19
4	1	108	Hall	I-985 & Spout Springs Rd.	18	34	4	404	Lee	SR 50 & Ledo Rd.	30
5	1	109	Hall	I-985 & SR 53 -Near Gainesville	126	35	4	406	Tift	I-75 & SR 520 - Tifton	24
6	1	110	Lumpkin	SR 400 & SR 60	20	36	4	407	Lowndes	I-75 & SR 31- Valdosta	15
7	1	112	Barrow	SR 124 & SR 211	28	37	4	408	Lowndes	I-75 & SR 38 - Valdosta	20
8	1	113	Dawson	SR 53 & SR 400	24	38	4	409	Turner	I-75 & SR 112 - Ashburn	15
9	1	114	Union	US 76 @ US 129 (SR 11)- Blairsville	49	39	4	410	Crisp	SR 300 & 300 Connector	19
10	1	115	Towns	US 76 @ SR 288-East of Hiawassee	28	40	4	412	Dougherty	US 19 & US 82 - Albany	30
11	2	201	Washington	SR 15 & SR 102 - Warthen	11	41	4	413	Dougherty	SR 91 & SR 133 - Albany	21
12	2	202	Laurens	SR 126 @ Walnut Rd. - Cadwell	10	42	4	414	Mitchell	City Hall on West Railroad Street - Pelham	20
13	2	203	Dodge	County Courthouse- Eastman	29	43	4	417	Brooks	Farmer's Market, SR 38	25
14	2	206	Laurens	US 80 & Rice Avenue - Dublin	31	44	5	503	Evans	Courthouse Street - Claxton	28
15	2	207	Washington	SR 57 & SR 68- Balls Ferry	32	45	5	505	Brantley	City of Nahunta	88
16	2	209	Burke	City Hall- Waynesboro	10	46	5	506	Charlton	Charlton County Courthouse - Folkston	22
17	2	213	Richmond	I-520 & Wheeler Rd. -Augusta	74	47	5	507	Tattnall	SR 23 - Glennville	23
18	2	214	Newton	I-20 & US 278- Covington	55	48	5	510	Chatham	I-95 & SR 204 West of I-95 - North of Savannah	20
19	2	219	Laurens	I-16 & SR 338 - Near Dudley	13	49	5	511	Chatham	I-95 & SR 21 West of I-95 - South of Savannah	33
20	2	220	Richmond	Broad Street & Gordon Hwy- Augusta	44	50	5	512	Bryan	I-16 & SR 30 South of I-16	38
21	2	221	Jefferson	US 1- City of Wrens	24	51	5	514	Brantley	SR 32 & SR 23 Hortense	14
22	2	222	Richmond	City Hall- Hephzibah	10	52	5	516	Effingham	Effingham County Courthouse - Springfield	53
23	2	227	Baldwin	Williams Park on SR 22- Milledgeville	20	53	5	519	Effingham	City of Guyton	20
24	2	228	Bleckley	SR 87 By-Pass - Cochran	50	54	5	520	Brantley	SR 15 & SR 50 - Hoboken	15
25	2	229	Laurens	SR 29 in East Dublin	20	55	5	521	Bulloch	SR 26 North of Statesboro	30
26	2	230	Wilkinson	SR 18 & SR 57- Near Gordon	20	56	5	522	Telfair	Tenth Avenue - Helena	15
27	2	231	Emanuel	Meadowlake Pkwy.- Swainsboro	49	57	5	602	Murray	Market Street & 4th Ave. - Chatsworth	29
28	3	302	Taylor	City of Reynolds	29	58	6	606	Gordon	US 41 @ Gordon County Courthouse - Calhoun	17
29	3	307	Henry	I-75 @ Jodeco Rd. - Near Flippen	15	59	6	608	Haralson	Higgins Gen. Hospital @ Poplar St. - Bremen	57
30	3	312	Dooley	City of Vienna	32	60	6	609	Cherokee	SR 5 Business @ the etowah River - Canton	173
						61	6	610	Paulding	SR 61 South of Dallas	167
						62	6	612	Polk	Philpot Street @ Alpha Way- Cedartown	31
						63	6	613	Bartow	Nelson Street - Cartersville	16
						64	6	614	Gordon	Northeast Section Public Square - Fairmount	10

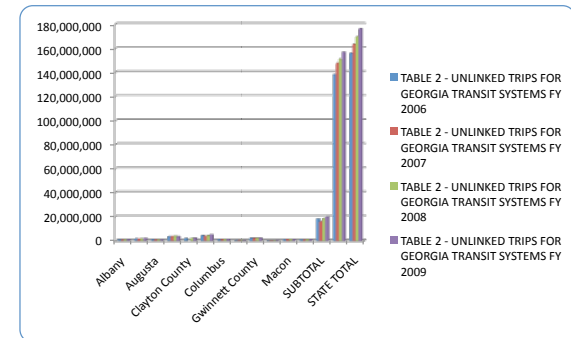
### FY 2000 Park & Ride Lots

DISTRICT	PR #	COUNTY	LOT NAME/LOCATION	SPACES	
65	6	615	Gordon	US 41 & SR 136 - Resaca	6
66	6	617	Gilmer	First Avenue @ SR 5	34
67	6	619	Haralson	Corinth Church on Rockmart Rd. near SR 120	45
68	6	620	Bartow	SR 3 @ Milepost 29 -n Adairsville	20
69	6	621	Pickens	SR 53 & Mary Street - Jasper	160
70	6	622	Paulding	Faith Baptist Church on SR 101 near SR 120- Dallas	34
71	6	625	Haralson	Sunbelt Drive North of I-20 - Waco	26
72	6	630	Carroll	I-20 & SR 61 North of I-20 - Villa Rica	160
73	6	631	Carroll	North Side Drive near SR 166 - Carrollton	65
74	6	632	Carroll	I-20 & SR 113 South of I-20 - Villa Rica	15
75	6	633	Pickens	SR 108 East of SR 515 near Jasper	22
76	7	701	Clayton	I-75 @ Aviation Blvd. Near Hartsfield Airport	579
77	7	702	Fulton	Campbellton & Barge Rd. Near I-285 Exit 5B(Ben Hill)	255
78	7	703	Dekalb	I-20E & Gresham Rd. Exit 63	403
79	7	706	Fulton	SR 400 & Abernathy Rd. Exit 5 North Atlanta	352
80	7	708	Dekalb	Fourth Street - City of Stone Mtn.(Evans Mill) Exit 74	150
81	7	710	Fulton	I-85 & Flat Shoals Rd. Exit 66 Near Union City	420
82	7	711	Rockdale	I-20 West & West Avenue Exit 80- Conyers Iris Dr.	58
83	7	713	Douglas	I-20 West & Lee Rd. Exit 41 Near Lithia Springs	145
84	7	721	Fulton	SR 400 & Mansell Rd. Exit 8 Near Roswell	418
85	7	723	Douglas	I-20 West & Thornton Rd. Exit 44 Near Austell	116
86	7	724	Douglas	I-20 West & Post Rd. Exit 30 B/w Douglasville/V. Rica	78
87	7	725	Rockdale	Chambers Drive & Sigman Rd. I-20 E. Exit 78- Conyers	419
88	3	313	Spalding	US 19 & 41 Atlanta Rd.- Griffin	141



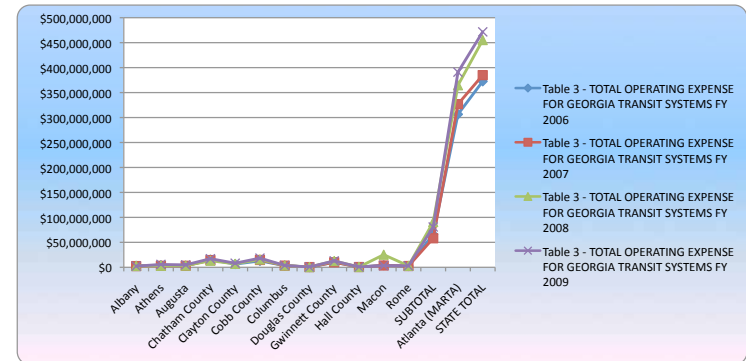
## UNLINKED TRIPS FOR GEORGIA TRANSIT SYSTEMS

SERVICE AREA	FY 2006	FY 2007	FY 2008	FY 2009
Albany	735,575	789,718	782,051	1,012,392
Athens	1,465,942	1,383,579	1,536,693	1,847,803
Augusta	949,956	904,652	879,257	847,224
Chatham County	3,602,094	3,602,507	3,609,071	3,397,746
Clayton County	1,742,477		1,982,545	2,191,844
Cobb County	4,178,746	3,841,320	4,188,773	4,822,702
Columbus	1,004,397	972,089	1,074,791	1,070,725
Douglas County	114,808	114,725	128,016	161,186
Gwinnett County	2,010,009	2,021,561	2,130,872	2,258,372
Hall County	50,475	58,404	106,279	114,652
Macon	1,178,076	1,181,198	1,166,738	1,032,010
Rome	835,424	865,872	921,231	968,031
SUBTOTAL	17,867,979	15,735,625	18,506,317	19,724,687
Atlanta (MARTA)	138,039,679	147,524,398	150,912,300	156,542,393
<b>STATE TOTAL</b>	<b>155,907,658</b>	<b>163,260,023</b>	<b>169,418,617</b>	<b>0</b>



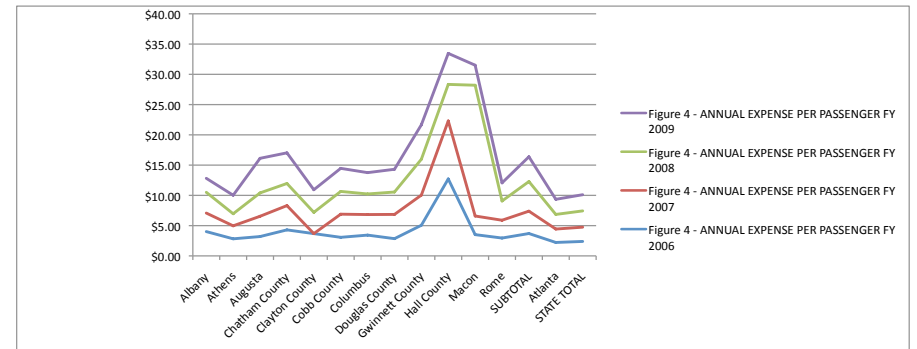
### TOTAL OPERATING EXPENSE FOR GEORGIA TRANSIT SYSTEMS

SERVICE AREA	FY 2006	FY 2007	FY 2008	FY 2009
Albany	\$2,954,839	\$2,417,212	\$2,682,971	\$2,339,577
Athens	\$4,136,273	\$2,969,933	\$3,063,345	\$5,657,762
Augusta	\$3,036,474	\$3,031,709	\$3,392,869	\$4,843,852
Chatham County	\$15,479,724	\$14,456,024	\$13,185,609	\$17,201,127
Clayton County	\$6,415,959		\$6,959,619	\$8,188,271
Cobb County	\$12,825,589	\$14,686,138	\$15,751,641	\$18,387,685
Columbus	\$3,449,866	\$3,301,033	\$3,656,741	\$3,772,005
Douglas County	\$326,867	\$459,580	\$473,805	\$605,986
Gwinnett County	\$10,172,094	\$10,075,696	\$12,634,009	\$12,858,312
Hall County	\$641,910	\$559,584	\$641,791	\$587,366
Macon	\$4,139,618	\$3,634,827	\$25,212,332	\$3,413,128
Rome	\$2,463,716	\$2,548,566	\$2,927,369	\$2,895,738
SUBTOTAL	\$66,042,929	\$58,140,302	\$90,582,101	\$80,750,809
Atlanta (MARTA)	\$306,504,418	\$326,856,818	\$364,630,000	\$390,922,410
STATE TOTAL	\$372,547,347	\$384,997,120	\$455,212,101	\$471,673,219



### ANNUAL EXPENSE PER PASSENGER

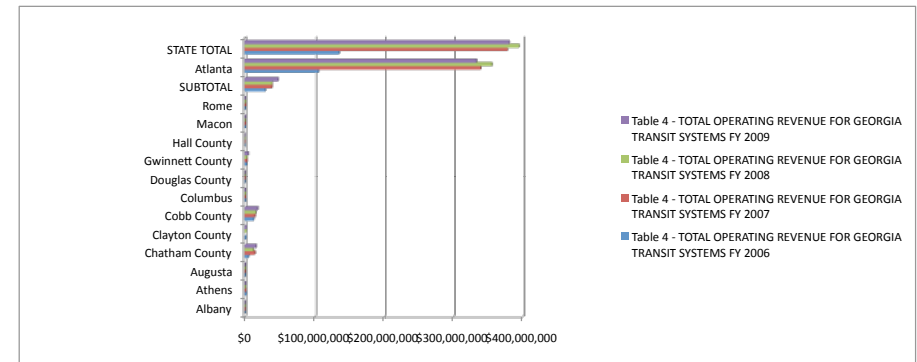
SERVICE AREA	FY 2006	FY 2007	FY 2008	FY 2009
Albany	\$4.02	\$3.06	\$3.43	\$2.31
Athens	\$2.82	\$2.15	\$1.99	\$3.06
Augusta	\$3.20	\$3.35	\$3.86	\$5.72
Chatham County	\$4.30	\$4.01	\$3.65	\$5.06
Clayton County	\$3.68	#DIV/0!	\$3.51	\$3.74
Cobb County	\$3.07	\$3.82	\$3.76	\$3.81
Columbus	\$3.43	\$3.40	\$3.40	\$3.52
Douglas County	\$2.85	\$4.01	\$3.70	\$3.76
Gwinnett County	\$5.06	\$4.98	\$5.93	\$5.69
Hall County	\$12.72	\$9.58	\$6.04	\$5.12
Macon	\$3.51	\$3.08	\$21.61	\$3.31
Rome	\$2.95	\$2.94	\$3.18	\$2.99
SUBTOTAL	\$3.70	\$3.69	\$4.89	\$4.09
Atlanta	\$2.22	\$2.22	\$2.42	\$2.50
STATE TOTAL	\$2.39	\$2.36	\$2.69	\$2.68





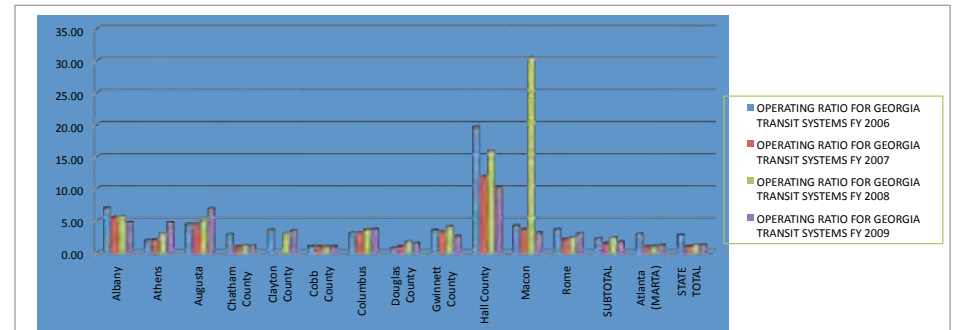
### TOTAL OPERATING REVENUE FOR GEORGIA TRANSIT SYSTEMS

SERVICE AREA	FY 2006	FY 2007	FY 2008	FY 2009
Albany	\$419,210	\$435,322	\$474,999	\$493,903
Athens	\$2,162,586	\$1,454,451	\$1,033,685	\$1,204,473
Augusta	\$671,518	\$668,698	\$661,708	\$701,464
Chatham County	\$5,420,642	\$14,628,921	\$12,223,614	\$15,925,486
Clayton County	\$1,784,667		\$2,303,041	\$2,411,731
Cobb County	\$12,825,588	\$14,686,138	\$15,751,641	\$18,387,685
Columbus	\$1,124,380	\$1,066,297	\$1,016,516	\$1,020,154
Douglas County	\$455,867	\$459,580	\$277,786	\$406,837
Gwinnett County	\$2,902,074	\$3,046,132	\$3,104,296	\$4,900,375
Hall County	\$32,566	\$46,764	\$40,417	\$56,950
Macon	\$980,664	\$990,537	\$827,490	\$1,090,646
Rome	\$675,801	\$1,194,479	\$1,240,056	\$968,031
SUBTOTAL	\$29,455,563	\$38,677,319	\$38,955,249	\$47,567,735
Atlanta	\$105,259,471	\$338,960,894	\$355,293,000	\$332,930,718
STATE TOTAL	\$134,715,034	\$377,638,213	\$394,248,249	\$380,498,453



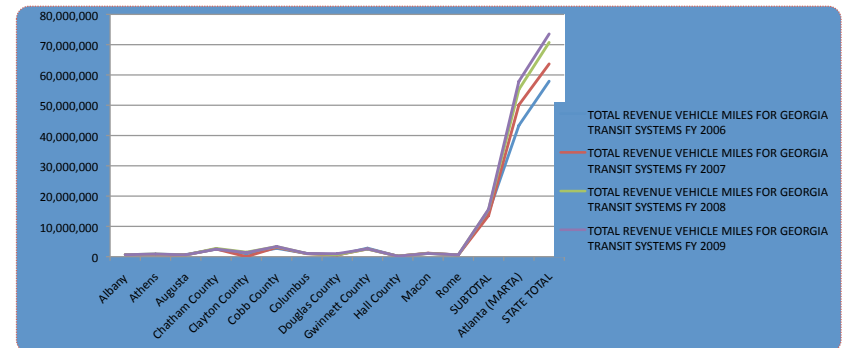
### OPERATING RATIO FOR GEORGIA TRANSIT SYSTEMS

SERVICE AREA	FY 2006	FY 2007	FY 2008	FY 2009
Albany	7.05	5.55	5.65	4.74
Athens	1.91	2.04	2.96	4.70
Augusta	4.52	4.53	5.13	6.91
Chatham County	2.86	0.99	1.08	1.08
Clayton County	3.60	#DIV/0!	3.02	3.40
Cobb County	1.00	1.00	1.00	1.00
Columbus	3.07	3.10	3.60	3.70
Douglas County	0.72	1.00	1.71	1.49
Gwinnett County	3.51	3.31	4.07	2.62
Hall County	19.71	11.97	15.88	10.31
Macon	4.22	3.67	30.47	3.13
Rome	3.65	2.13	2.36	2.99
SUBTOTAL	2.24	1.50	2.33	1.70
Atlanta (MARTA)	2.91	0.96	1.03	1.17
STATE TOTAL	2.77	1.02	1.15	1.24



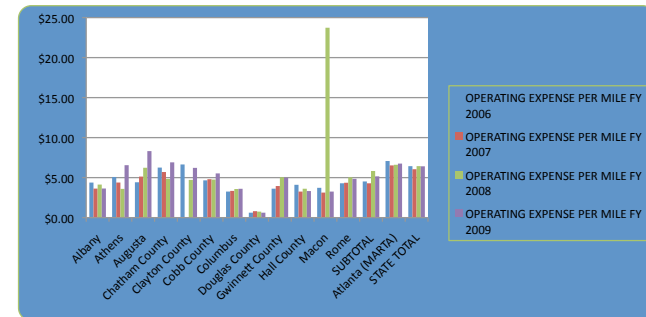
### TOTAL REVENUE VEHICLE MILES FOR GEORGIA TRANSIT SYSTEMS

SERVICE AREA	FY 2006	FY 2007	FY 2008	FY 2009
Albany	674,401	666,169	649,305	642,854
Athens	814,346	677,159	852,609	863,334
Augusta	687,386	591,068	544,398	582,610
Chatham County	2,474,926	2,535,950	2,725,180	2,489,730
Clayton County	965,589	1,474,715	1,474,715	1,316,640
Cobb County	2,753,579	3,057,559	3,310,735	3,327,503
Columbus	1,058,896	987,456	1,022,448	1,046,348
Douglas County	529,000	569,000	632,968	982,477
Gwinnett County	2,811,930	2,552,012	2,505,207	2,578,483
Hall County	156,456	171,932	177,712	176,823
Macon	1,111,162	1,161,687	1,062,284	1,048,391
Rome	573,884	584,583	581,518	597,349
SUBTOTAL	14,611,555	13,554,575	15,539,079	15,652,542
Atlanta (MARTA)	43,324,678	50,086,619	55,192,994	57,885,605
STATE TOTAL	57,936,233	63,641,194	70,732,073	73,538,147



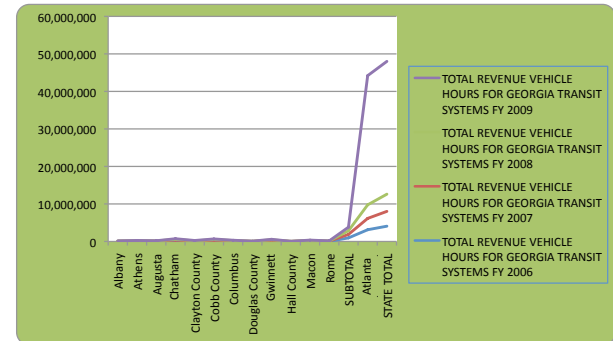
### OPERATING EXPENSE PER MILE

SERVICE AREA	FY 2006	FY 2007	FY 2008	FY 2009
Albany	\$4.38	\$3.63	\$4.13	\$3.64
Athens	\$5.08	\$4.39	\$3.59	\$6.55
Augusta	\$4.42	\$5.13	\$6.23	\$8.31
Chatham County	\$6.25	\$5.70	\$4.84	\$6.91
Clayton County	\$6.64	#DIV/0!	\$4.72	\$6.22
Cobb County	\$4.66	\$4.80	\$4.76	\$5.53
Columbus	\$3.26	\$3.34	\$3.58	\$3.60
Douglas County	\$0.62	\$0.81	\$0.75	\$0.62
Gwinnett County	\$3.62	\$3.95	\$5.04	\$4.99
Hall County	\$4.10	\$3.25	\$3.61	\$3.32
Macon	\$3.73	\$3.13	\$23.73	\$3.26
Rome	\$4.29	\$4.36	\$5.03	\$4.85
SUBTOTAL	\$4.52	\$4.29	\$5.83	\$5.16
Atlanta (MARTA)	\$7.07	\$6.53	\$6.61	\$6.75
STATE TOTAL	\$6.43	\$6.05	\$6.44	\$6.41



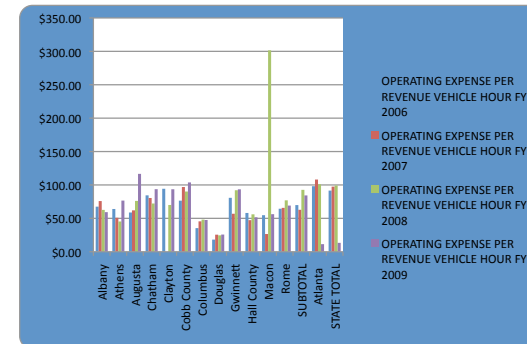
### TOTAL REVENUE VEHICLE HOURS FOR GEORGIA TRANSIT SYSTEMS

SERVICE AREA	FY 2006	FY 2007	FY 2008	FY 2009
Albany	43,775	31,859	42,816	39,473
Athens	64,619	58,409	67,644	73,879
Augusta	51,683	48,928	44,573	41,544
Chatham County	183,348	179,632	182,584	183,681
Clayton County	68,058	99,422	99,422	87,536
Cobb County	167,695	151,572	174,736	177,192
Columbus	97,585	72,546	75,976	79,355
Douglas County	18,000	17,987	19,304	23,552
Gwinnett County	126,012	177,146	137,236	137,572
Hall County	11,057	11,835	11,455	11,391
Macon	75,660	137,060	83,610	60,701
Rome	38,260	38,793	38,044	41,893
SUBTOTAL	945,752	925,767	977,400	957,769
Atlanta (MARTA)	3,123,983	3,023,439	3,611,769	34,443,380
STATE TOTAL	4,069,735	3,949,206	4,589,169	35,401,149



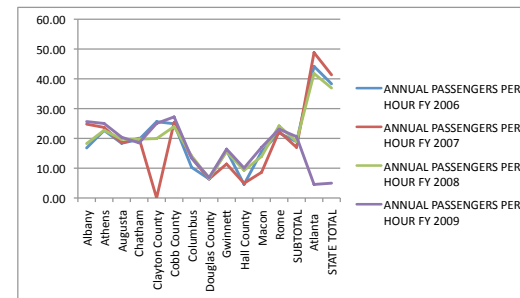
### OPERATING EXPENSE PER REVENUE VEHICLE HOUR

SERVICE AREA	FY 2006	FY 2007	FY 2008	FY 2009
Albany	\$67.50	\$75.87	\$62.66	\$59.27
Athens	\$64.01	\$50.85	\$45.29	\$76.58
Augusta	\$58.75	\$61.96	\$76.12	\$116.60
Chatham County	\$84.43	\$80.48	\$72.22	\$93.65
Clayton County	\$94.27	#DIV/0!	\$70.00	\$93.54
Cobb County	\$76.48	\$96.89	\$90.15	\$103.77
Columbus	\$35.35	\$45.50	\$48.13	\$47.53
Douglas County	\$18.16	\$25.55	\$24.54	\$25.73
Gwinnett County	\$80.72	\$56.88	\$92.06	\$93.47
Hall County	\$58.05	\$47.28	\$56.03	\$51.56
Macon	\$54.71	\$26.52	\$301.55	\$56.23
Rome	\$64.39	\$65.70	\$76.95	\$69.12
SUBTOTAL	\$69.83	\$62.80	\$92.68	\$84.31
Atlanta (MARTA)	\$98.11	\$108.11	\$100.96	\$11.35
STATE TOTAL	\$91.54	\$97.49	\$99.19	\$13.32



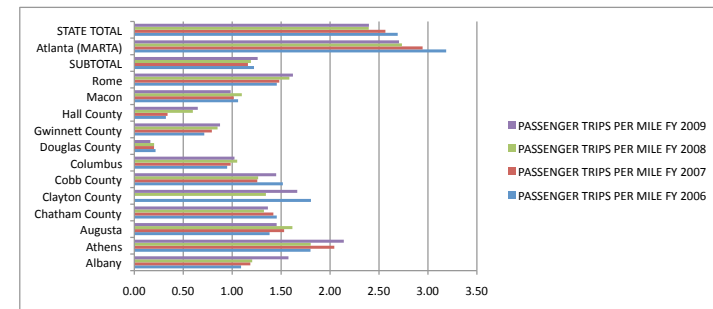
### ANNUAL PASSENGERS PER HOUR

SERVICE AREA	FY 2006	FY 2007	FY 2008	FY 2009
Albany	16.80	24.79	18.27	25.65
Athens	22.69	23.69	22.72	25.01
Augusta	18.38	18.49	19.73	20.39
Chatham County	19.65	20.05	19.77	18.50
Clayton County	25.60	#DIV/0!	19.94	25.04
Cobb County	24.92	25.34	23.97	27.22
Columbus	10.29	13.40	14.15	13.49
Douglas County	6.38	6.38	6.63	6.84
Gwinnett County	15.95	11.41	15.53	16.42
Hall County	4.56	4.93	9.28	10.07
Macon	15.57	8.62	13.95	17.00
Rome	21.84	22.32	24.21	23.11
SUBTOTAL	18.89	17.00	18.93	20.59
Atlanta (MARTA)	44.19	48.79	41.78	4.54
STATE TOTAL	38.31	41.34	36.92	4.98



### PASSENGER TRIPS PER MILE

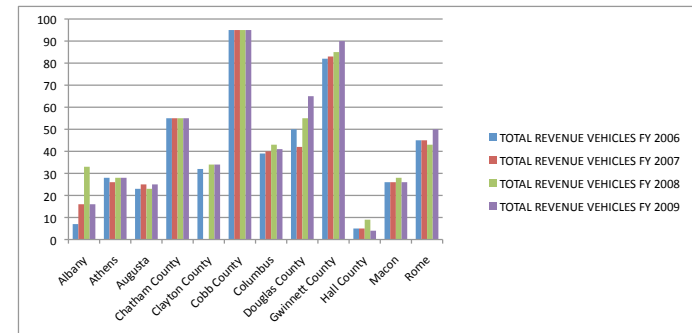
SERVICE AREA	FY 2006	FY 2007	FY 2008	FY 2009
Albany	1.09	1.19	1.20	1.57
Athens	1.80	2.04	1.80	2.14
Augusta	1.38	1.53	1.62	1.45
Chatham County	1.46	1.42	1.32	1.36
Clayton County	1.80	#DIV/0!	1.34	1.66
Cobb County	1.52	1.26	1.27	1.45
Columbus	0.95	0.98	1.05	1.02
Douglas County	0.22	0.20	0.20	0.16
Gwinnett County	0.71	0.79	0.85	0.88
Hall County	0.32	0.34	0.60	0.65
Macon	1.06	1.02	1.10	0.98
Rome	1.46	1.48	1.58	1.62
SUBTOTAL	1.22	1.16	1.19	1.26
Atlanta (MARTA)	3.19	2.95	2.73	2.70
STATE TOTAL	2.69	2.57	2.40	2.40





### TOTAL REVENUE VEHICLES

SERVICE AREA	FY 2006	FY 2007	FY 2008	FY 2009
Albany	7	16	33	16
Athens	28	26	28	28
Augusta	23	25	23	25
Chatham County	55	55	55	55
Clayton County	32		34	34
Cobb County	95	95	95	95
Columbus	39	40	43	41
Douglas County	50	42	55	65
Gwinnett County	82	83	85	90
Hall County	5	5	9	4
Macon	26	26	28	26
Rome	45	45	43	50
SUBTOTAL				
Atlanta - Bus	599	609	624	600
Atlanta - Rail	338	338		338
STATE TOTAL				



### MOTER FUEL CONSUMPTION IN GALLONS FOR GEORGIA TRANSIT SYSTEMS

SERVICE AREA	FY2007	FY2008	FY2009	FY2010	FY2011	FUEL TYPE
ALBANY	6,556	4,700	3,223	4,220	4,099	GASOLINE
	108,607	150,128	142,514	132,795	148,023	DIESEL
	N/A	N/A	N/A	N/A	N/A	CNG
ATHENS	18,933	12,107	8,982	17,864	15,890	GASOLINE
	241,798	230,238	260,817	259,261	262,240	DIESEL
	N/A	N/A	N/A	N/A	N/A	CNG
AUGUSTA	N/A	N/A	N/A	N/A	N/A	GASOLINE
	150,712	139,620	147,169	148,854	143,113	DIESEL
	N/A	N/A	N/A	N/A	N/A	CNG
CHATHAM COUNTY	7,828	9,426	15,872	N/A	N/A	GASOLINE
	689,907	596,341	785,757	665,612	665,612	DIESEL
	N/A	N/A	N/A	N/A	N/A	CNG
CLAYTON COUNTY	34,567	—	1614	—	—	GASOLINE
	—	8,915	33,663	—	—	DIESEL
	—	486,090	—	—	—	CNG
COBB COUNTY	N/A	N/A	N/A	N/A	N/A	GASOLINE
	751,363	900,000	975,720	1,189,715	1,093,673	DIESEL
	170,332	158,673	134,412	137,813	106,769.5	CNG
COLUMBUS	N/A	N/A	N/A	N/A	N/A	GASOLINE
	278,721	260,256	269,404	270,183	272,585	DIESEL
	N/A	N/A	N/A	N/A	N/A	CNG
DOUGLAS COUNTY	52,800	55,300	76,025	—	87,529	GASOLINE
	N/A	N/A	N/A	N/A	N/A	DIESEL
	6100	2,868	4,545	—	374	CNG
GWINNETT COUNTY	N/A	N/A	N/A	N/A	2,636	GASOLINE
	54,470	92,448	238,254	369,851	390,360	DIESEL
	1,014,682	954,851	924,616	648,560	528,325	CNG

### MOTER FUEL CONSUMPTION IN GALLONS FOR GEORGIA TRANSIT SYSTEMS

SERVICE AREA	FY2007	FY2008	FY2009	FY2010	FY2011	FUEL TYPE
HALL COUNTY	N/A	N/A	N/A	N/A	27,260	GASOLINE
	23,198	—	52,860	54,350	38,620	DIESEL
	N/A	N/A	N/A	N/A	N/A	CNG
LIBERTY COUNTY	—	—	—	—	576	GASOLINE
	—	—	—	—	37,511	DIESEL
	—	—	—	—	19,914	GASOLINE
MACON	3,055	14,951	3,820	16,922	19,914	DIESEL
	257,526	264,454	244,824	238,395	245,147	DIESEL
	N/A	N/A	N/A	N/A	N/A	CNG
ROME	4,819	680	N/A	2,309	3,106	GASOLINE
	115,890	88,723	48,324	119,691	90,492	DIESEL
	N/A	N/A	N/A	N/A	N/A	CNG
ATLANTA	328,310	—	—	451,188	371,824	GASOLINE
	3,274,748	3,159,863	3,125,277	3,227,718	3,123,775	DIESEL
	5,915,927	6,928,006	6,771,850	6,613,440	5,719,492	CNG
	178,407,928	—	—	—	—	PROPULSION POWER
	25,714,727	N/A	99,101,203	98,873,882	173,038,051	KILOWATT HOURS ELECTRICITY (MARTA ONLY)



**About the  
2007-2011  
Georgia Transit  
Fact Book**

*Information current as of March 2012.*

*Office of Intermodal*

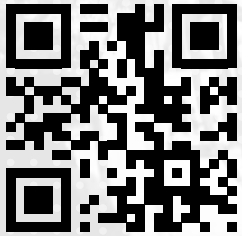
**Carol Comer**  
*Director*

*Creative & Design Services*

**Cedric Mohr**  
*Project Manager*

**Georgia Department  
of Transportation**

Office of Communications  
One Georgia Center  
600 West Peachtree Street  
Atlanta, GA 30308  
Phone: 404.631.1990  
[www.dot.ga.gov](http://www.dot.ga.gov)



Scan this code with your  
smart phone QR reader  
for more information about  
Georgia DOT.



Visit us on Facebook  
or Twitter.

