



SR 400 Extension Planning Study

Stakeholder Update

PI 0013671

May 11, 2020

Jalen Ford – GDOT PM

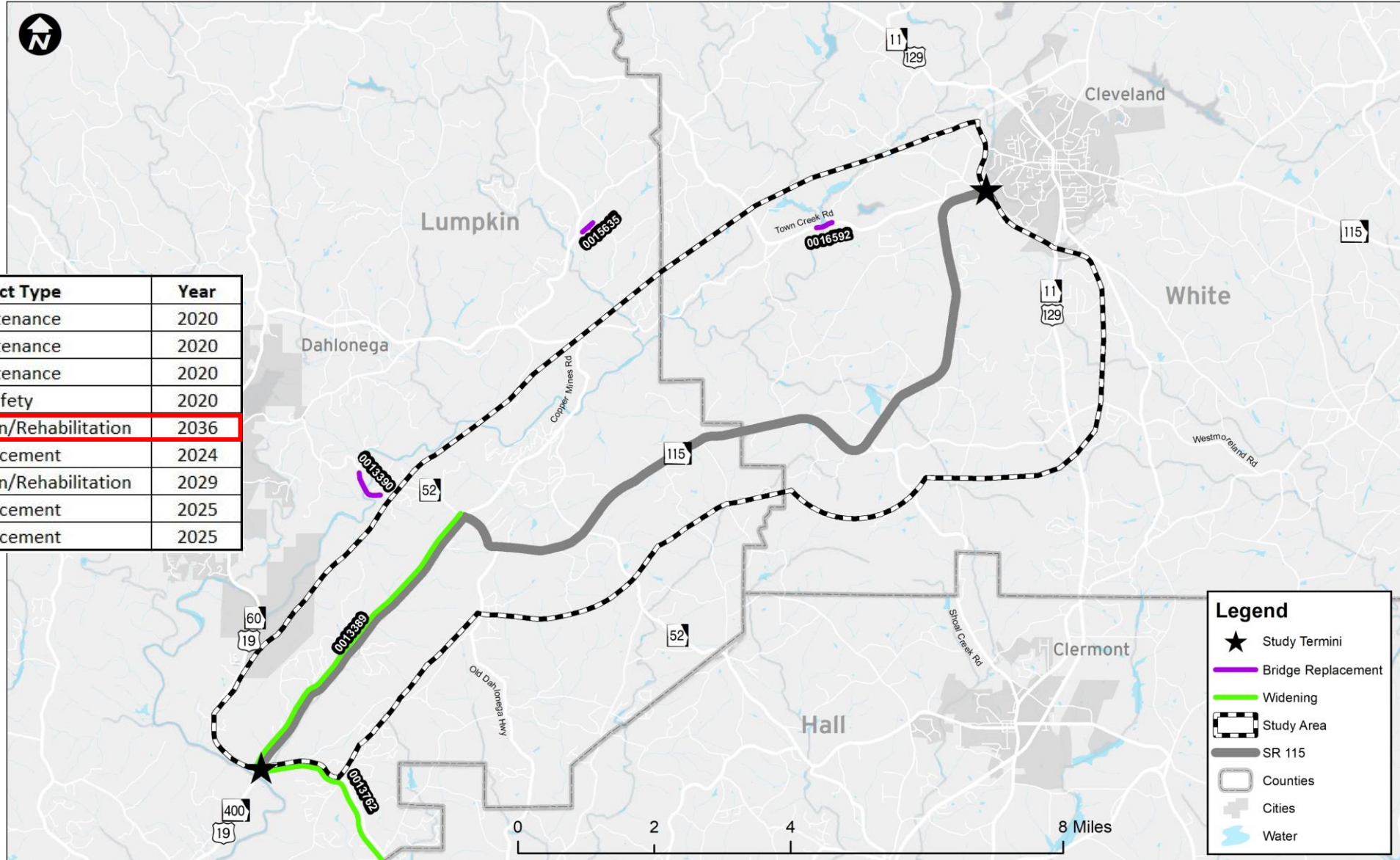
Rebecca Hester – HNTB PM



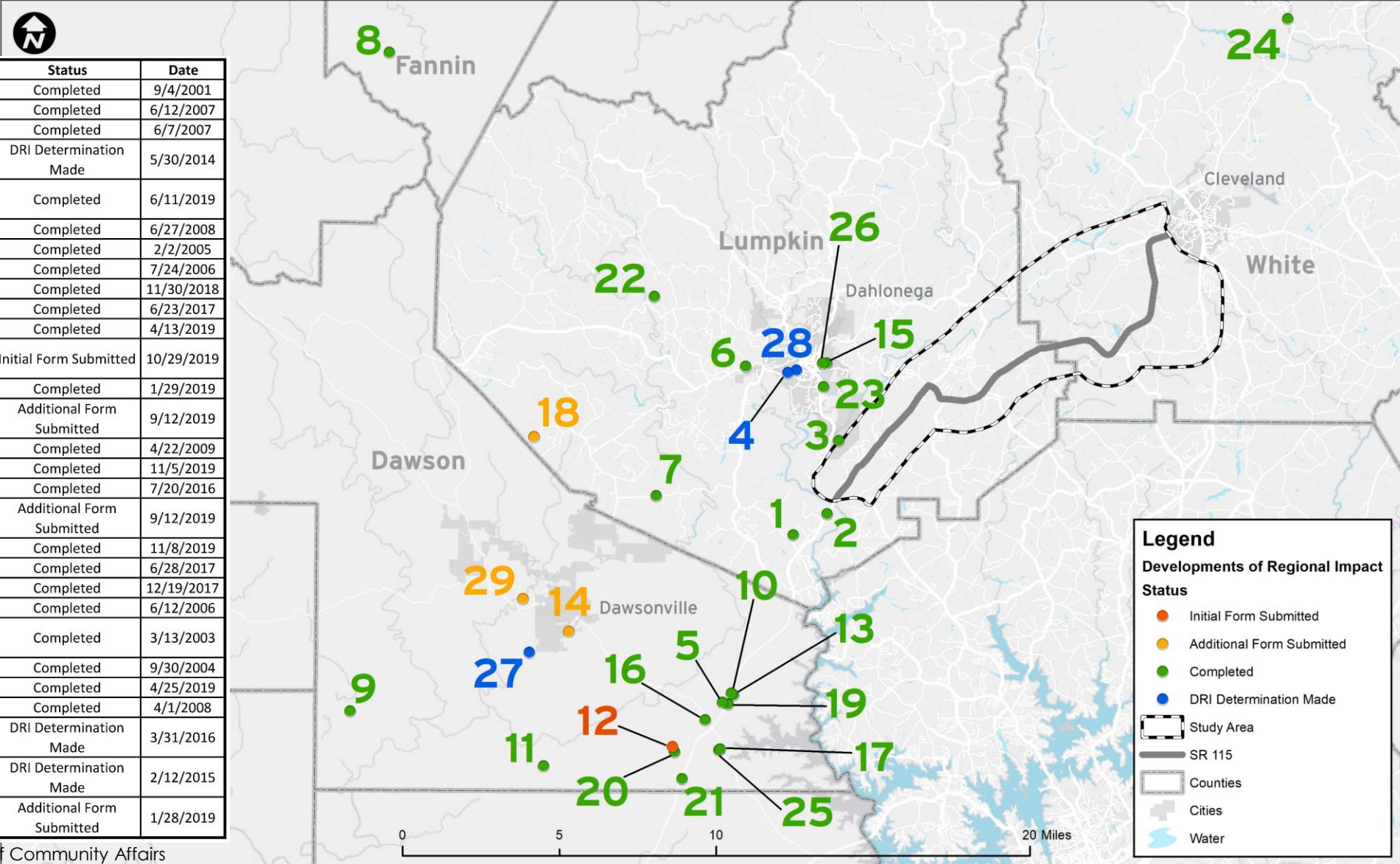
Agenda

- Establishing Future Conditions
- Future Conditions and Needs Assessment
- Improvement Development Process
- Next Steps
- Questions

Planned and Programmed Projects

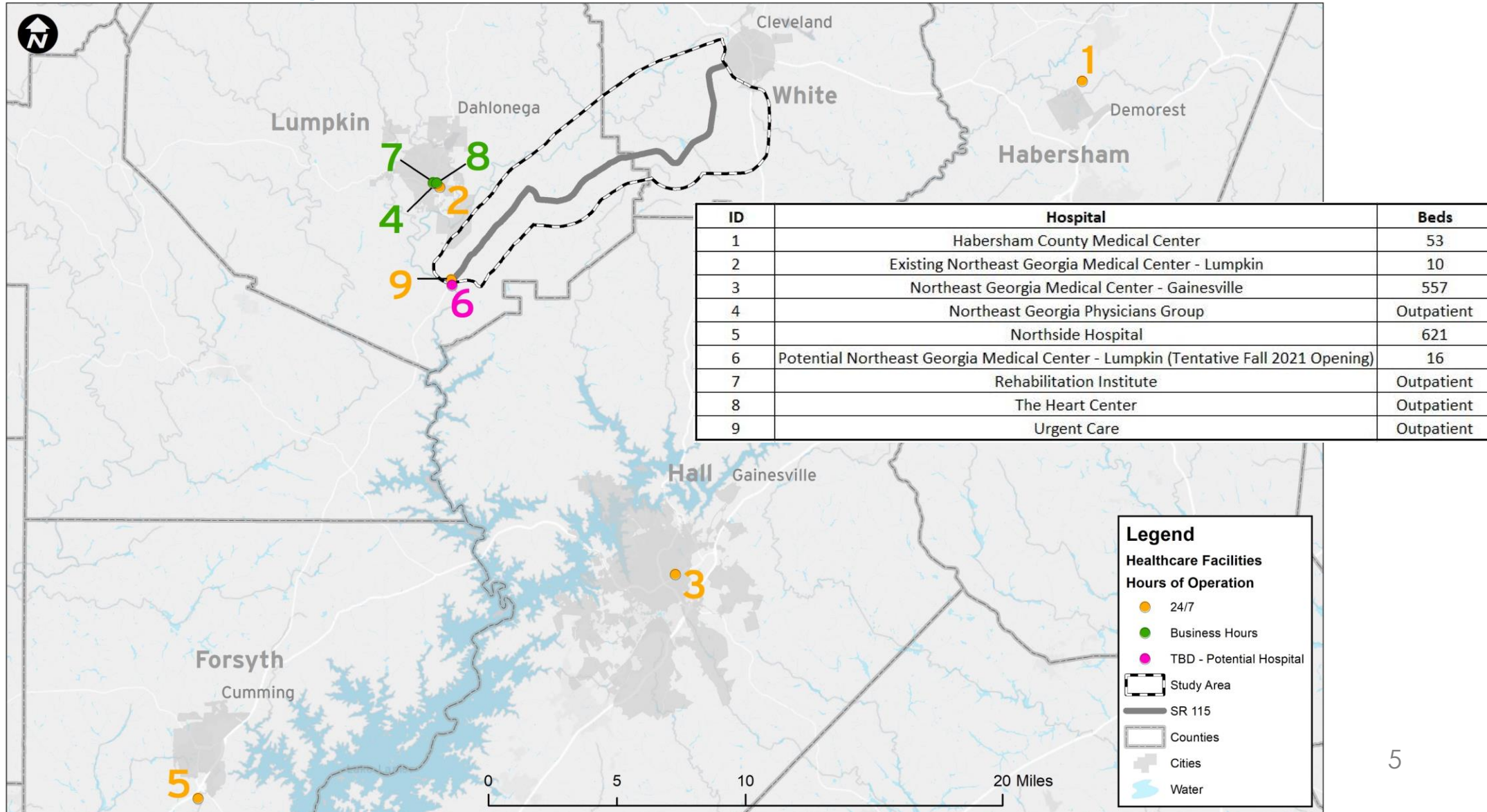


Developments of Regional Impact

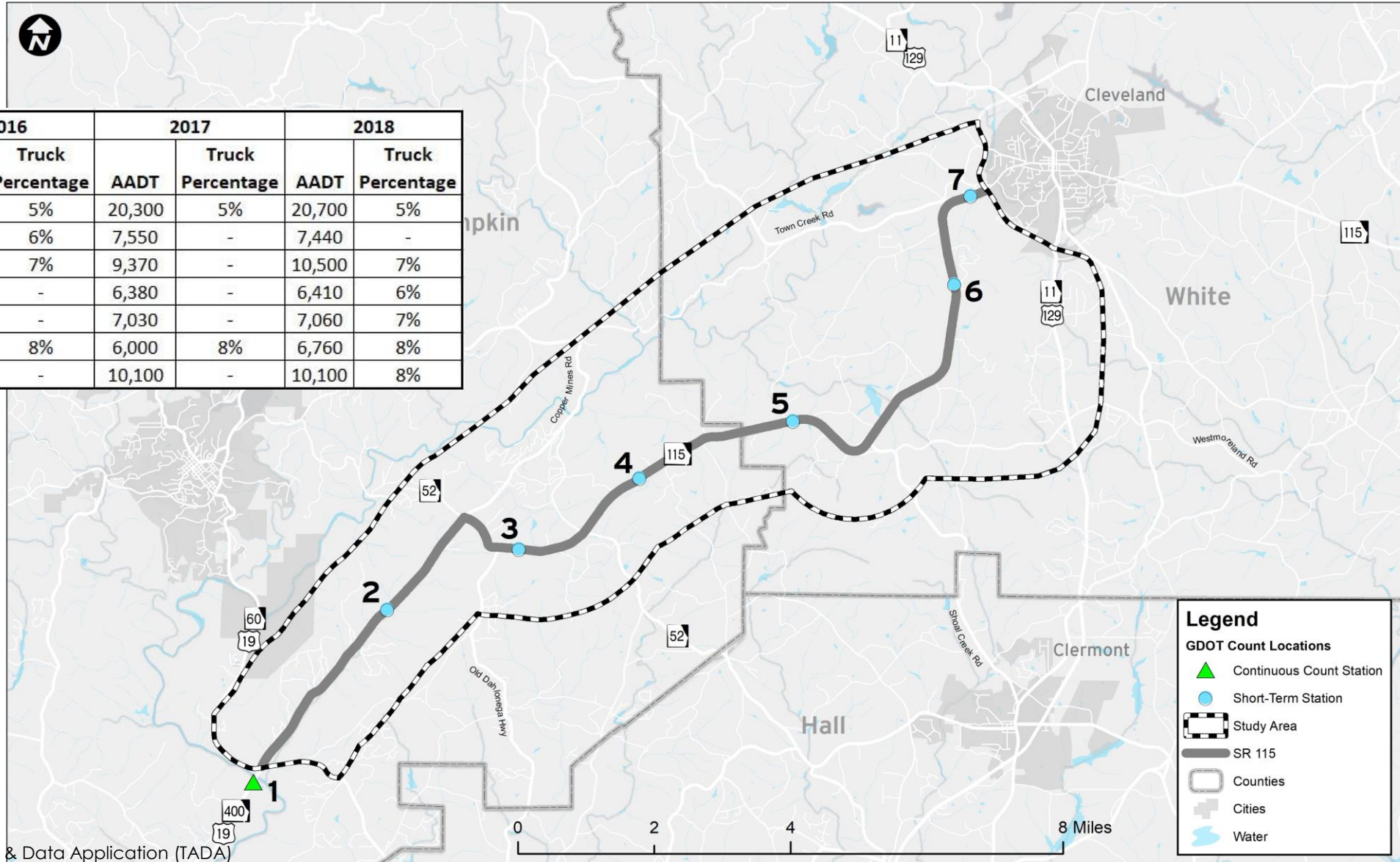


ID	Development	Status	Date
1	400 North Landfill	Completed	9/4/2001
2	400 Terminus	Completed	6/12/2007
3	Birch River (Achasta)	Completed	6/7/2007
4	The Bluffs	DRI Determination Made	5/30/2014
5	BTD-702 Lumpkin Campground Road	Completed	6/11/2019
6	Buckhorn Development	Completed	6/27/2008
7	Castleberry Ridge	Completed	2/2/2005
8	Crawford Falls - West	Completed	7/24/2006
9	Crystal Falls	Completed	11/30/2018
10	Curran Tract Housing	Completed	6/23/2017
11	Dawson Forest Planned Community	Completed	4/13/2019
12	Dawson Forest Road Multi-Use Project	Initial Form Submitted	10/29/2019
13	Etowah Village	Completed	1/29/2019
14	Fall Leaf Residential	Additional Form Submitted	9/12/2019
15	Gold Creek Foods, LLC	Completed	4/22/2009
16	Housing	Completed	11/5/2019
17	Hughes Court Townhomes	Completed	7/20/2016
18	Iron Mountain Park	Additional Form Submitted	9/12/2019
19	Kilough - 400 Tract	Completed	11/8/2019
20	KM Homes (Mansie Park)	Completed	6/28/2017
21	Life Hope Senior Living	Completed	12/19/2017
22	Montalvina (Montaluce Winery)	Completed	6/12/2006
23	Mountain Music Park (Chelsey Park Health & Rehab)	Completed	3/13/2003
24	Nacoochee Village	Completed	9/30/2004
25	Penler Dawsonville	Completed	4/25/2019
26	Student Residences	Completed	4/1/2008
27	TBD	DRI Determination Made	3/31/2016
28	University of North Georgia Housing	DRI Determination Made	2/12/2015
29	Villas at Howser Mill	Additional Form Submitted	1/28/2019

Existing and Planned Healthcare Facilities



Traffic Count Locations



Final Growth Rate

Initial Annual No Build Growth Rates

Time Period	SR 115 & State Routes	Side Roads
2019 to 2030	0.8%	0.8%
2030 to 2050	0.8%	0.8%

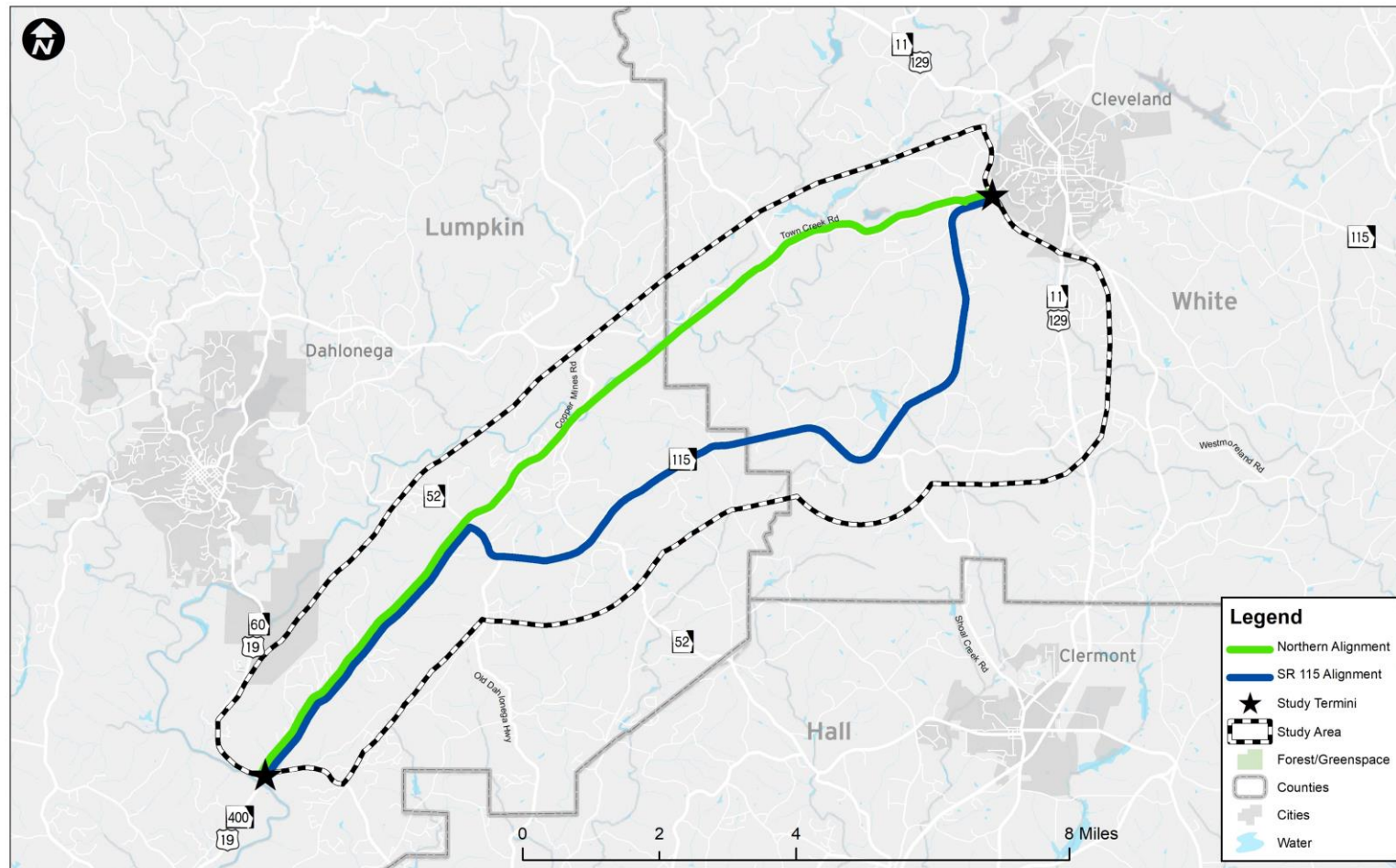
Location	Historical Annual Growth (1990-2020)	Forecasted Annual Growth (2020-2050)	PI 0010195 No-Build Growth Rate
Georgia	1.68%	0.90%	-
Lumpkin County	2.84%	1.08%	-
White County	3.02%	1.44%	2.20%

Historical Traffic Volume Summary

Roadway	Stations	15 year	10 year	5 year
SR 400	1	2.11%	2.12%	2.11%
SR 60	2	NA	NA	2.60%
SR 115	8	NA	1.46%	2.87%

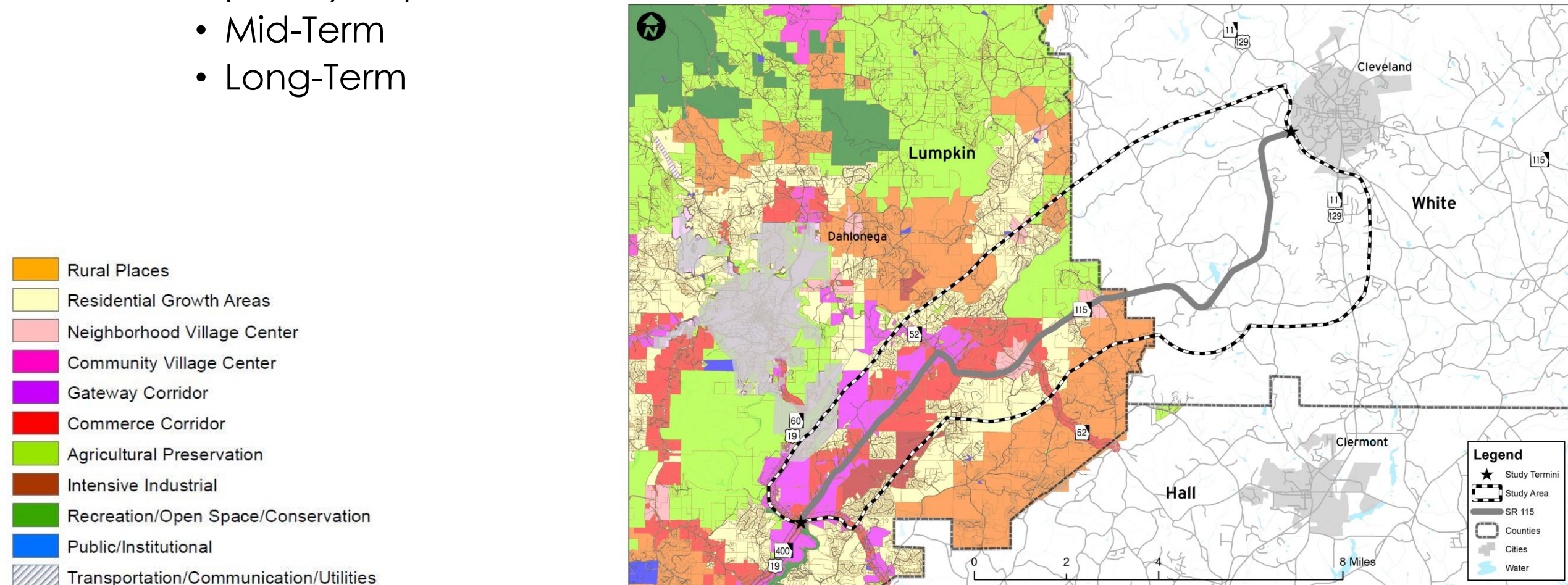
Annual No-Build Growth Rates

Time Period	SR 115 & State Routes	Side Roads
2019 to 2030	1.6%	1.6%
2030 to 2050	1.6%	1.6%



Improvement Alternatives

- Capacity Improvements
 - Mid-Term
 - Long-Term

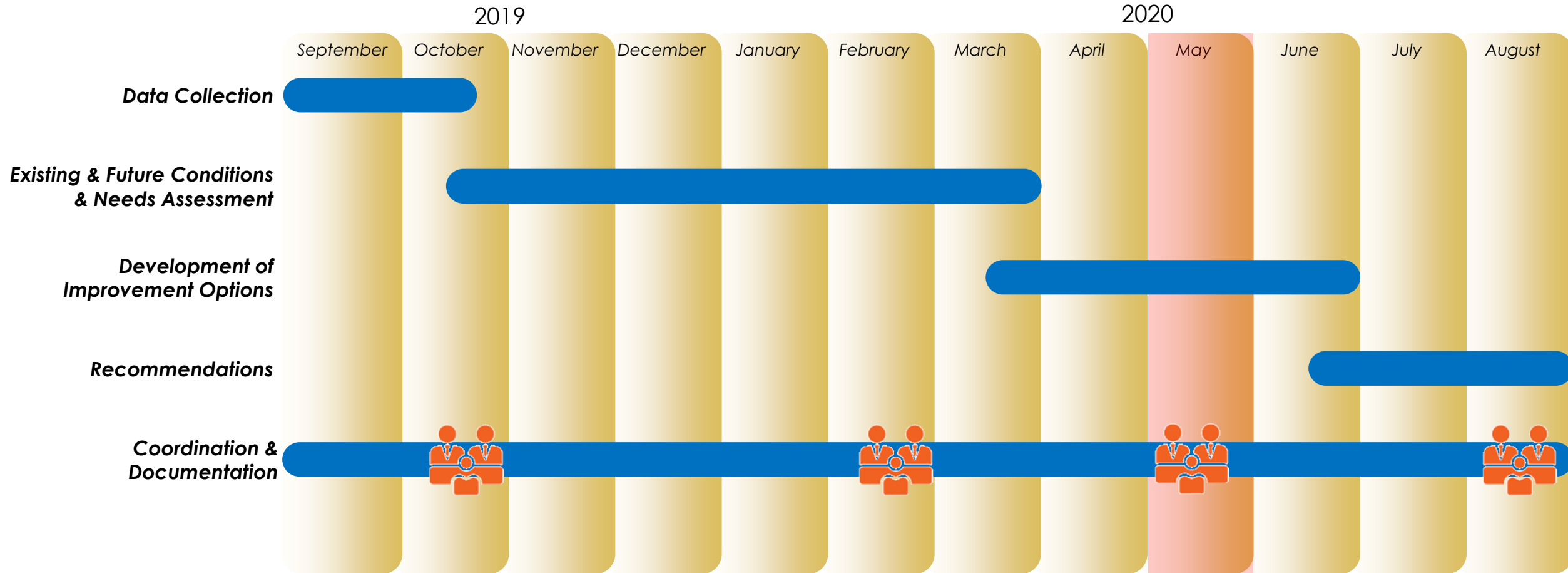


Improvement Alternatives

- Intersection Improvements
 - SR 400 at SR 60
 - Add dual lefts to the NB & WB approaches
 - Quadrant roadway (NE quadrant)
 - Multilane roundabout
 - SR 115 at SR 52
 - Add dual lefts to the WB approach
 - Single lane roundabout
 - Multilane roundabout
 - SR 115 at SR 284
 - Add dual lefts to the WB approach
 - Single lane roundabout
 - High-T (unsignalized)



Study Schedule



- Stakeholder Meeting

Next Steps

- Develop Alternative Concepts and Costs
- Assess Alternative Benefits
- Assess Alternative Impacts
- Meeting #3 – Preliminary Recommendations
 - August 2020

Questions



Contact Information

Georgia Department of Transportation

Office of Planning

Jalen Ford, Project Manager

Phone: (404) 631-1773

Email: jford@dot.ga.gov