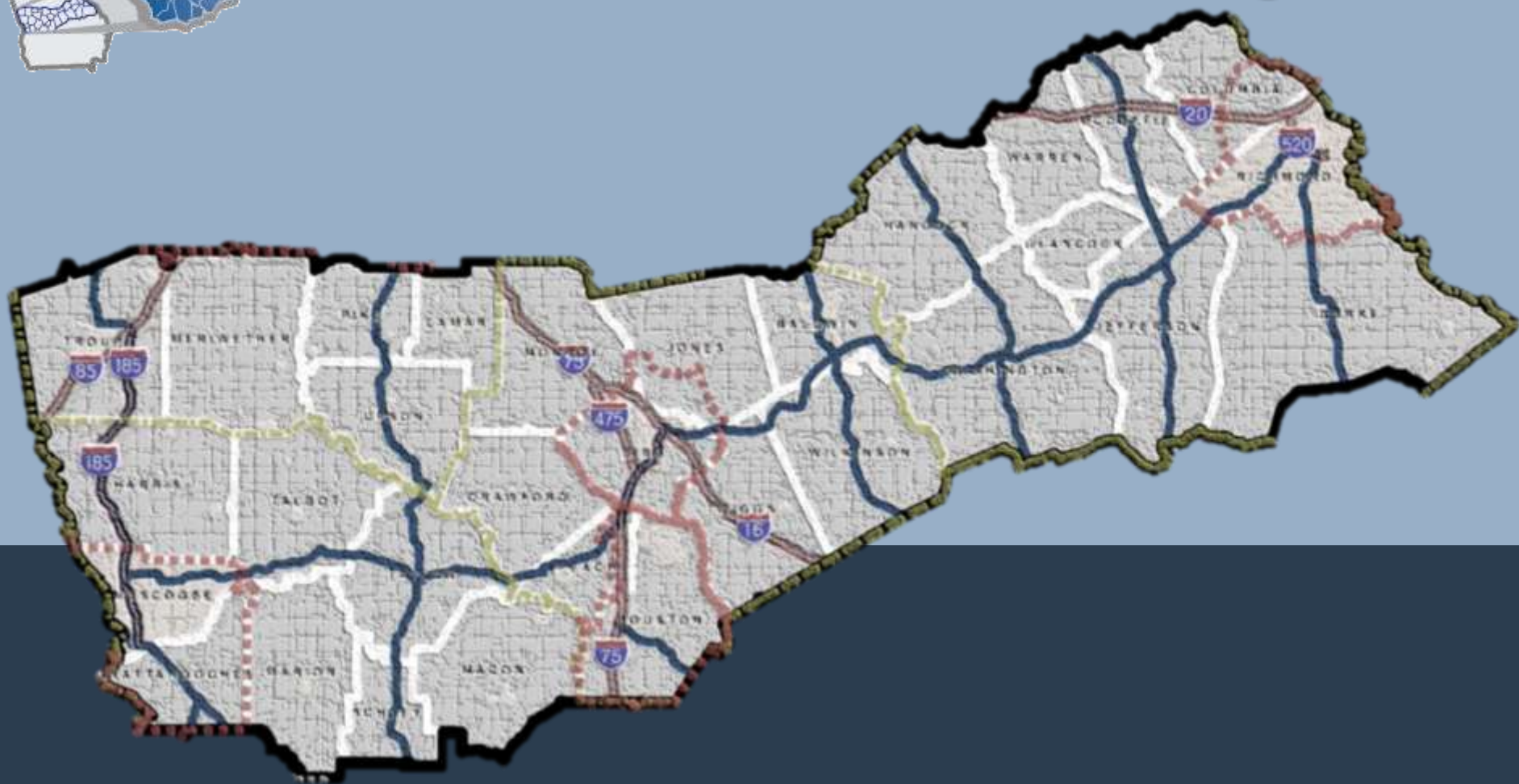




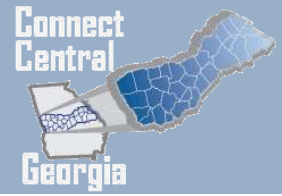
Connect Central Georgia



Stakeholder Meeting #1

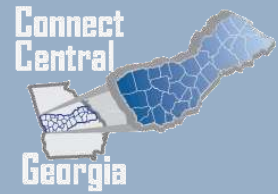
September 21st, 2011

Agenda



- Stakeholder Advisory Committee Role
- Overview and History
 - Previous Studies
 - Study Area Characteristics
- What Will This Study Accomplish?
- Study Process
- Stakeholder Feedback
- Group Activity: Development of Goals & Objectives / Character Areas

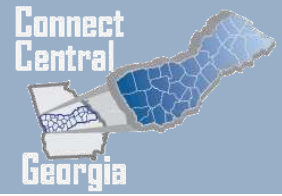
Stakeholder Advisory Committee



- Georgia Department of Transportation
- Regional Commissions
- MPOs
- Counties
- Cities
- Industry Representatives
- Elected Officials

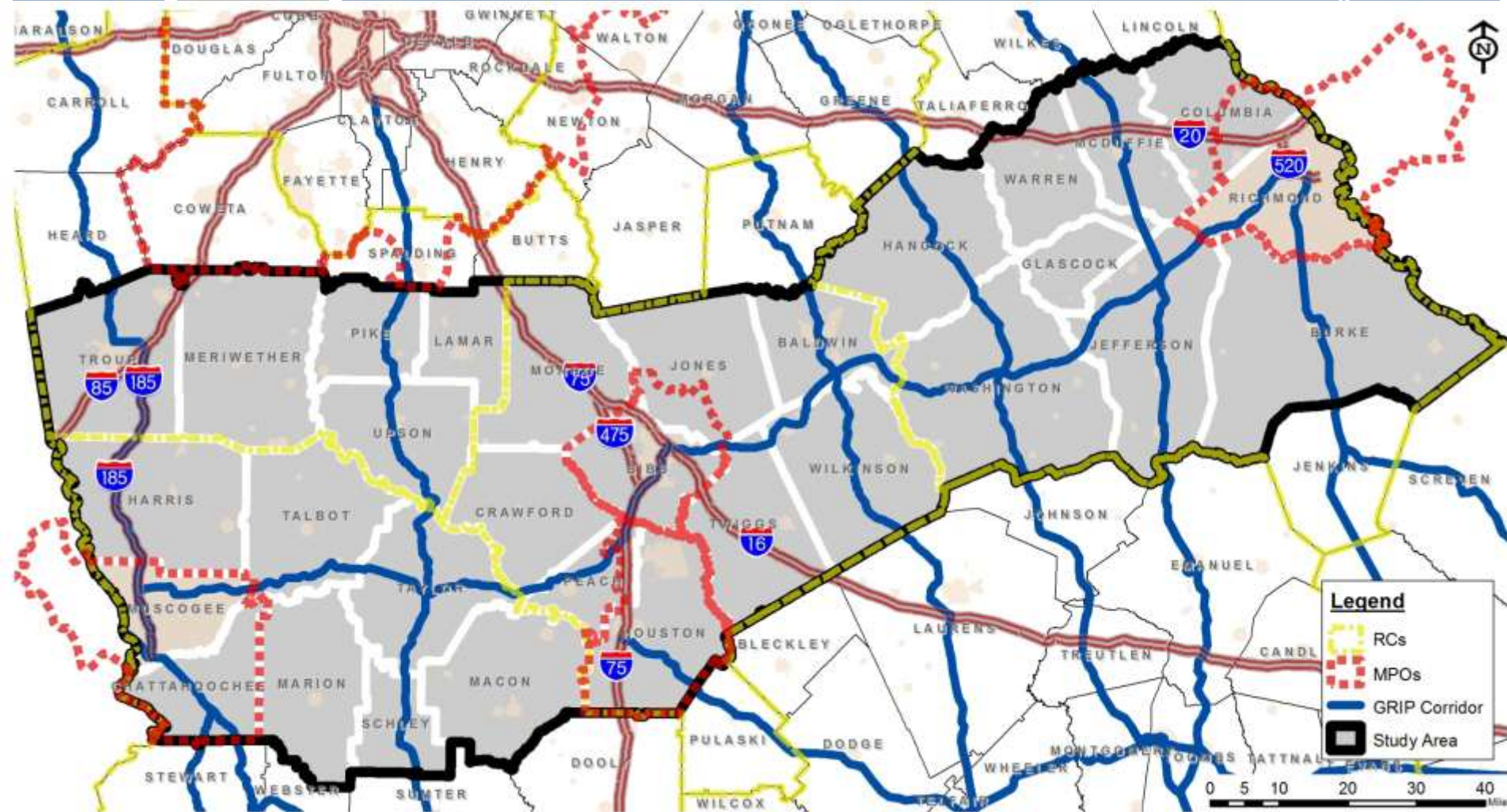


Stakeholder Advisory Committee

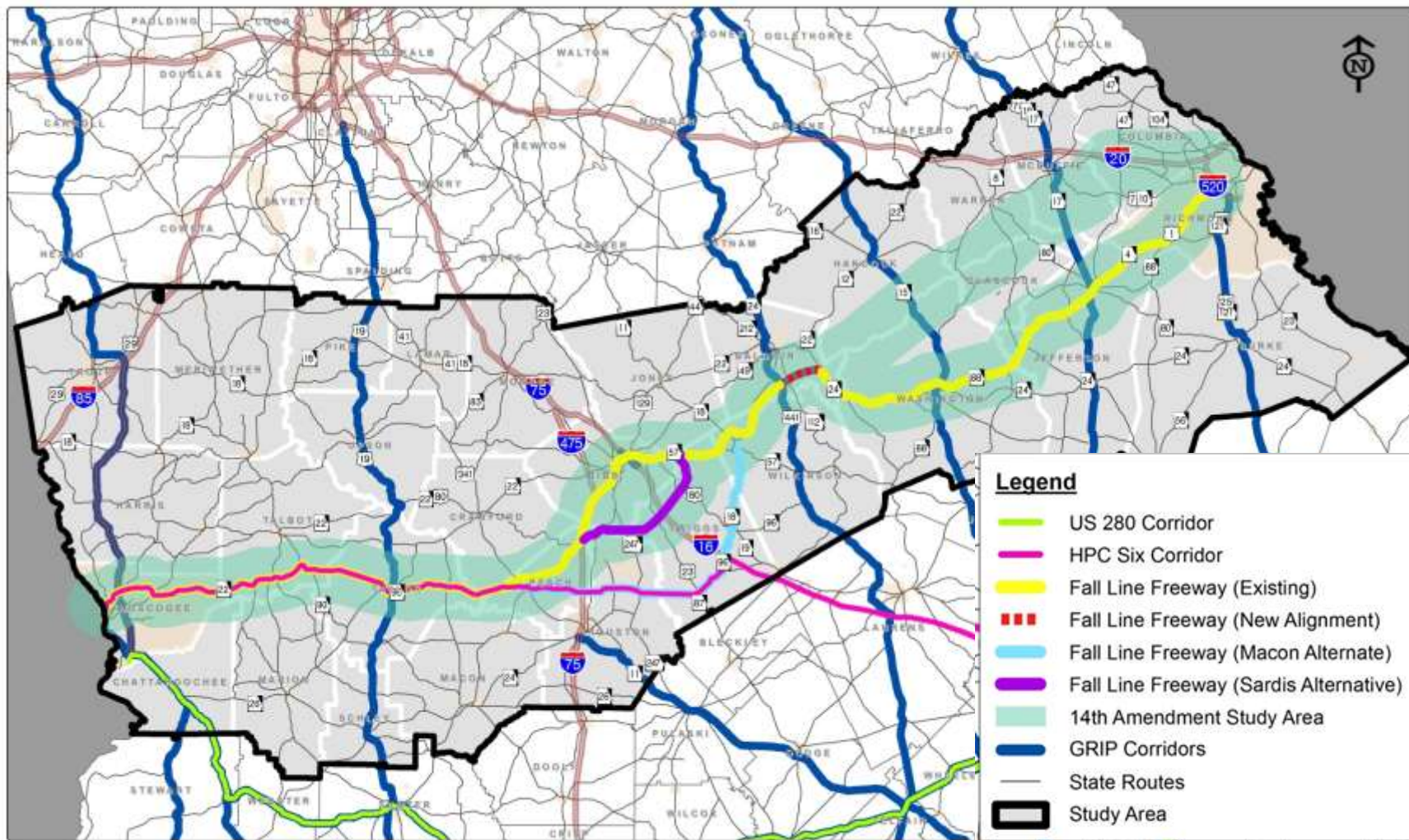
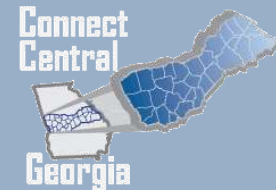


- Roles & Responsibilities
 - Define goals & objectives
 - Provide insight on related study efforts and developments
 - Identify transportation / land use deficiencies & opportunities
 - Review technical findings and recommendations
 - Coordinate with your constituents

Study Area



Overview & History



Previous Studies



- GRIP Corridors Initiative
 - Designated in 1989 for Economic Development
 - US 27, US 19, US 441, SR 15, SR 17, SR 121, Fall Line Freeway
- High Priority Corridor 6 (HPC 6) Study – 2001
 - Meridian, MS to Savannah, GA
 - More Efficient Freight Connection to Georgia's Atlantic Ports
- US 280 Corridor Study – 2003
 - Columbus, GA to Savannah, GA
 - Access Existing Infrastructure and Goods Movement
- 14th Amendment Highway Study – 2011
 - Natchez, MS to Augusta, GA
 - Investigated Cost of Interstate Investment

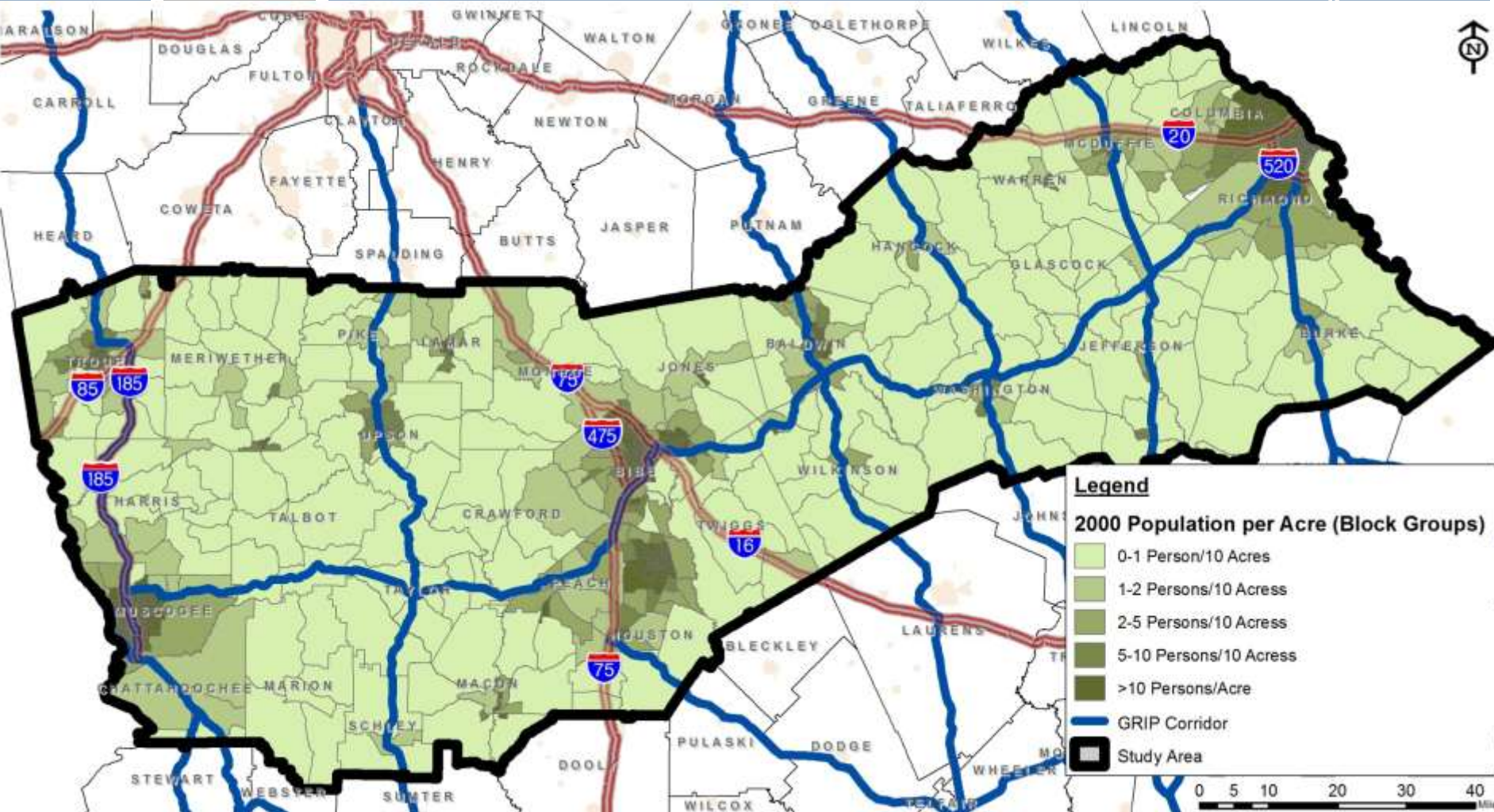
- IT3 – Investing in Tomorrow's Transportation Today
 - Priorities
 - Freight and Logistics
 - People Mobility throughout Georgia
 - Themes
 - Safety
 - Accessibility
 - Connectivity

Encourages completion of high-volume freight corridors that align with GRIP

- Identifies the Fall Line Freeway between Macon and Augusta

Study Area Characteristics

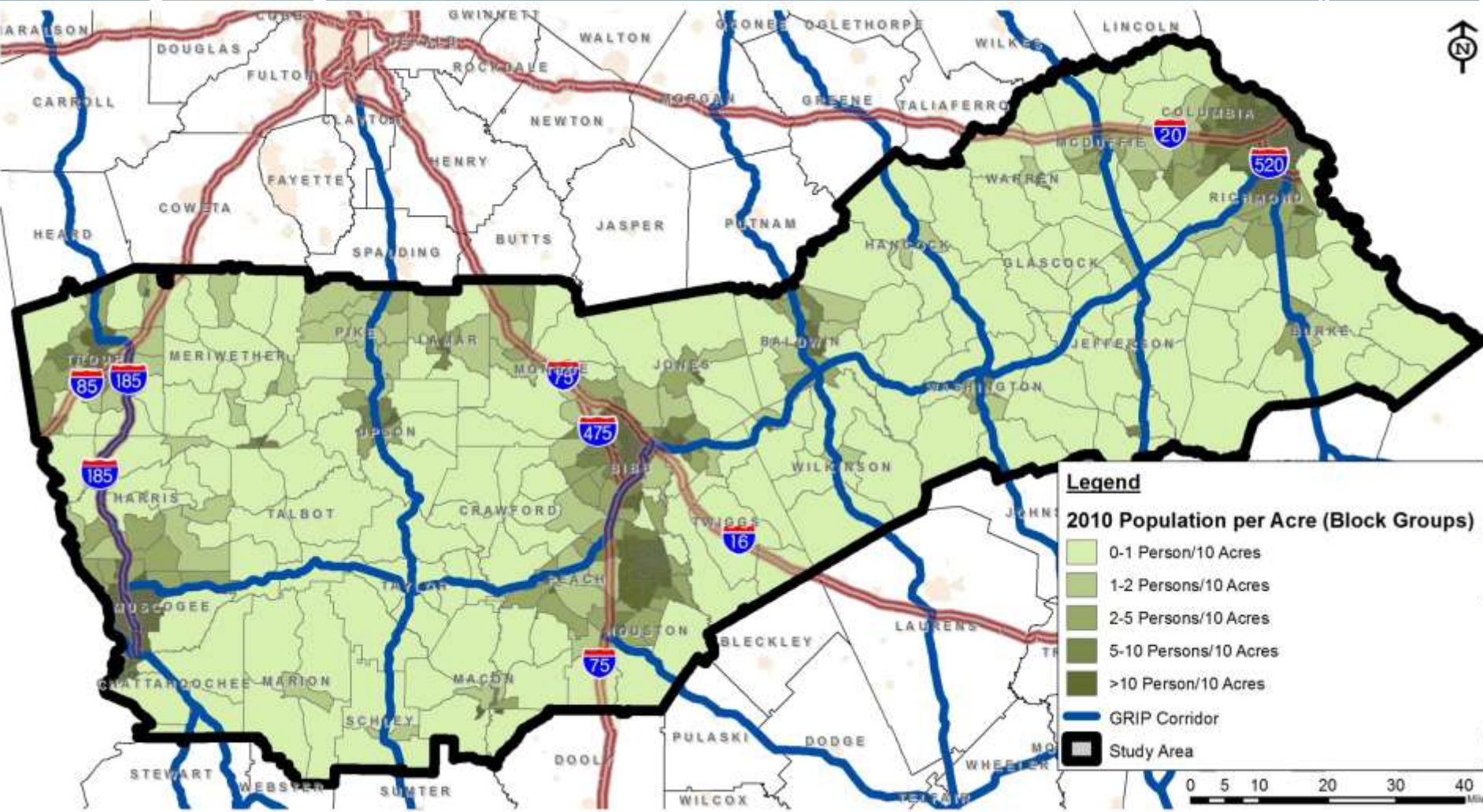
Population Per Acre - 2000



Source: 2000 US Census

Study Area Characteristics

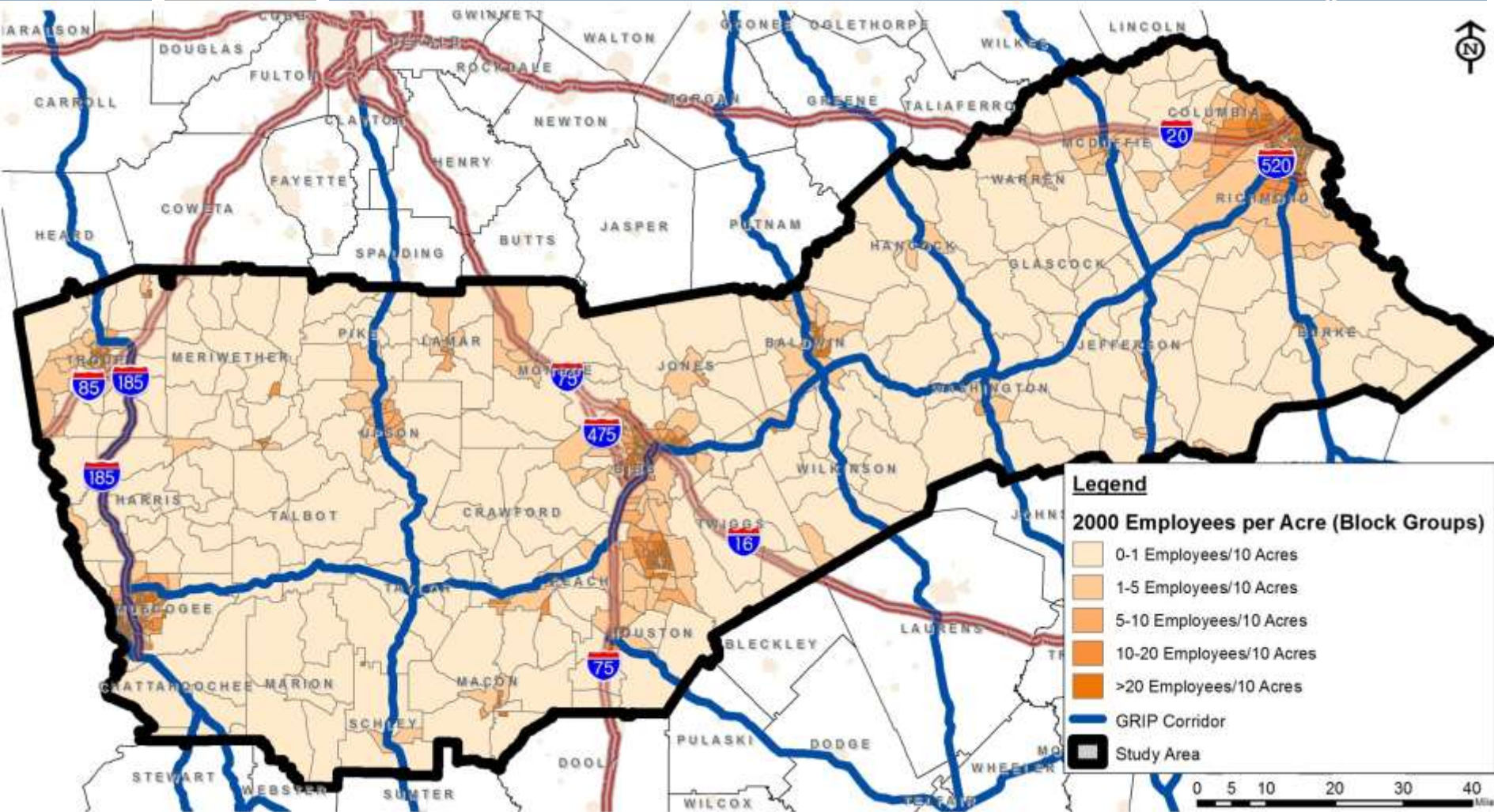
Population Per Acre - 2010



Source: 2010 US Census

Study Area Characteristics

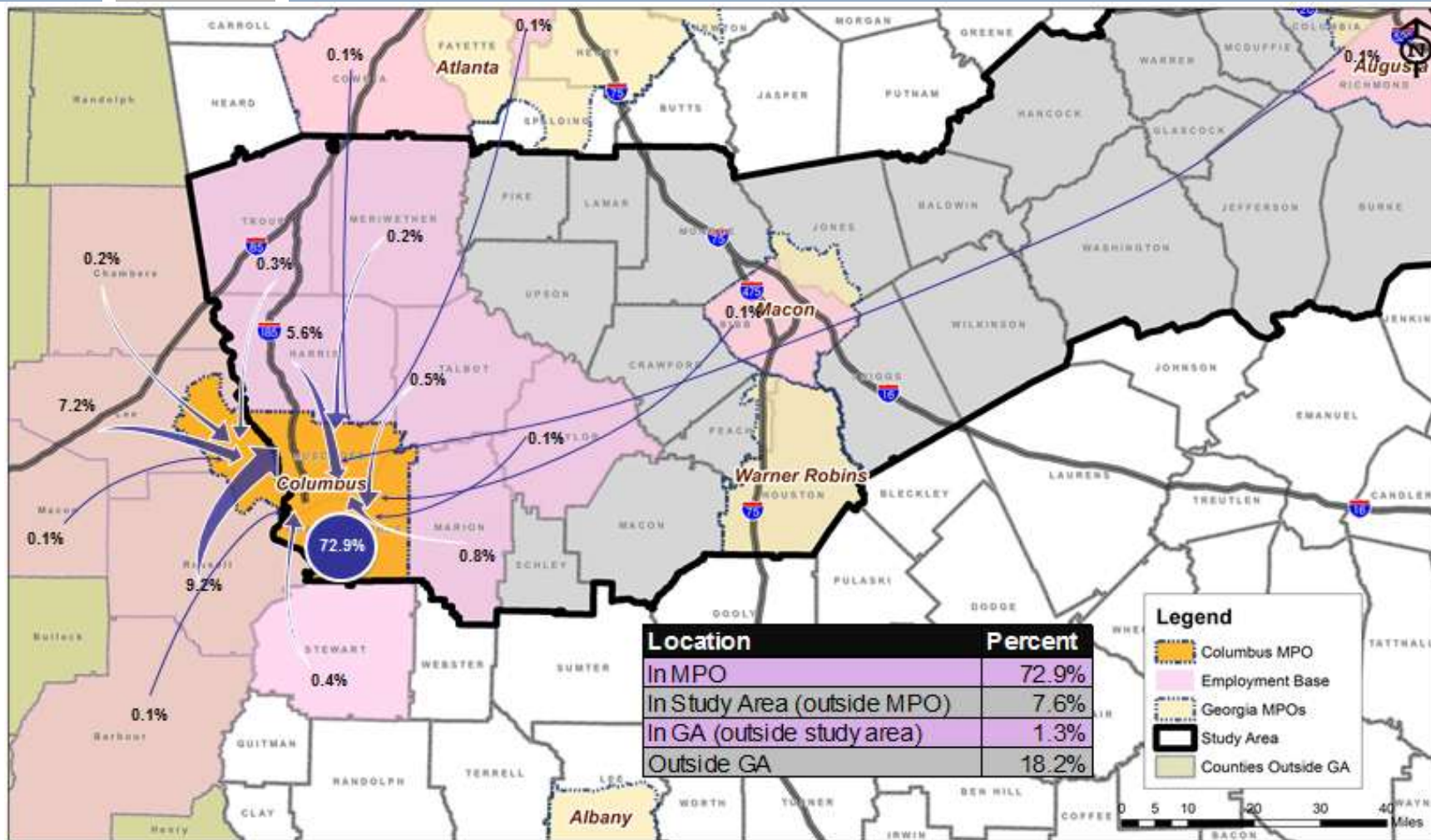
Employees Per Acre - 2000



Source: 2000 US Census

Study Area Characteristics

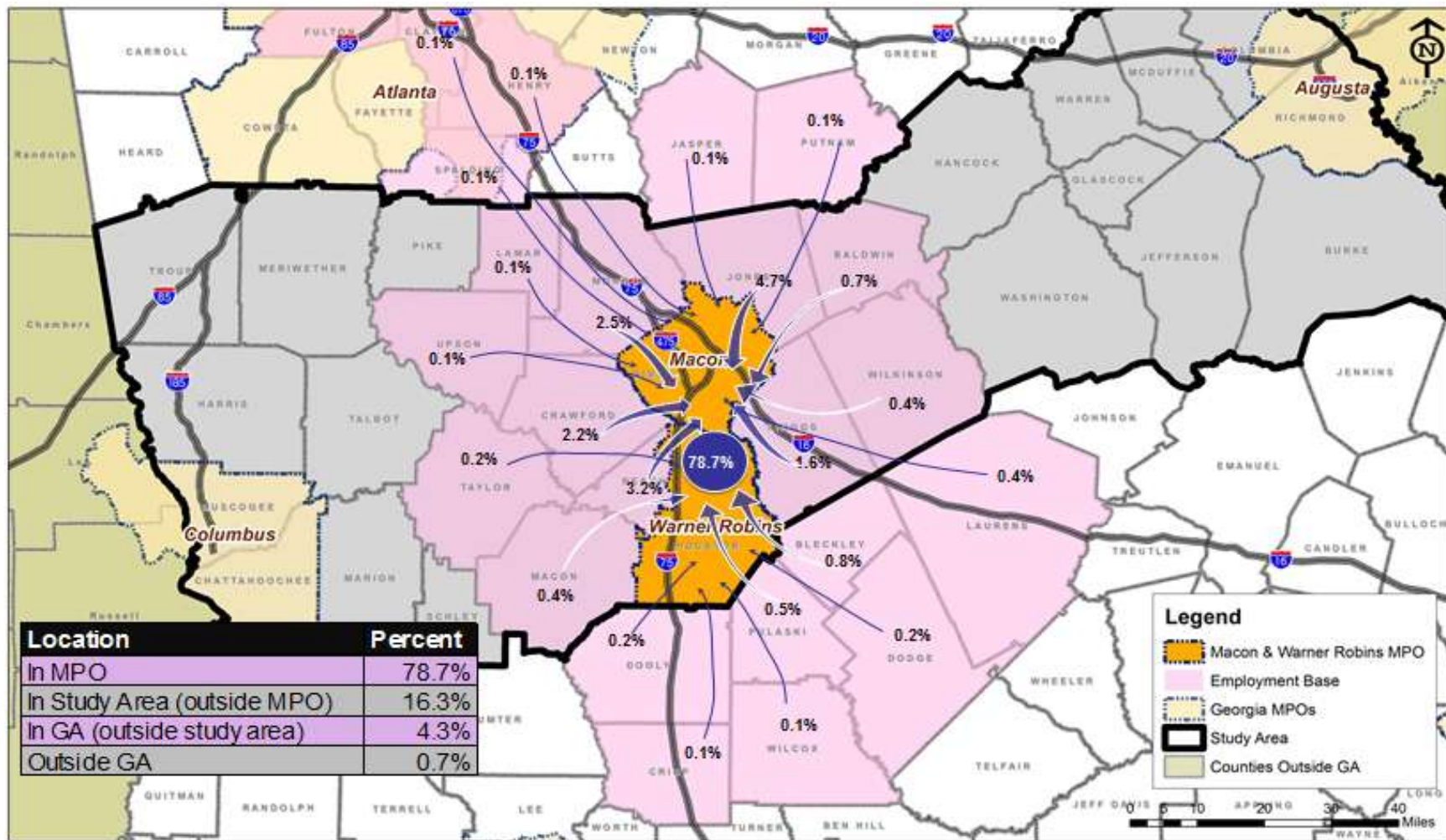
Journey to Work - Columbus



Source: 2000 Census County-to-County Work Flow Data

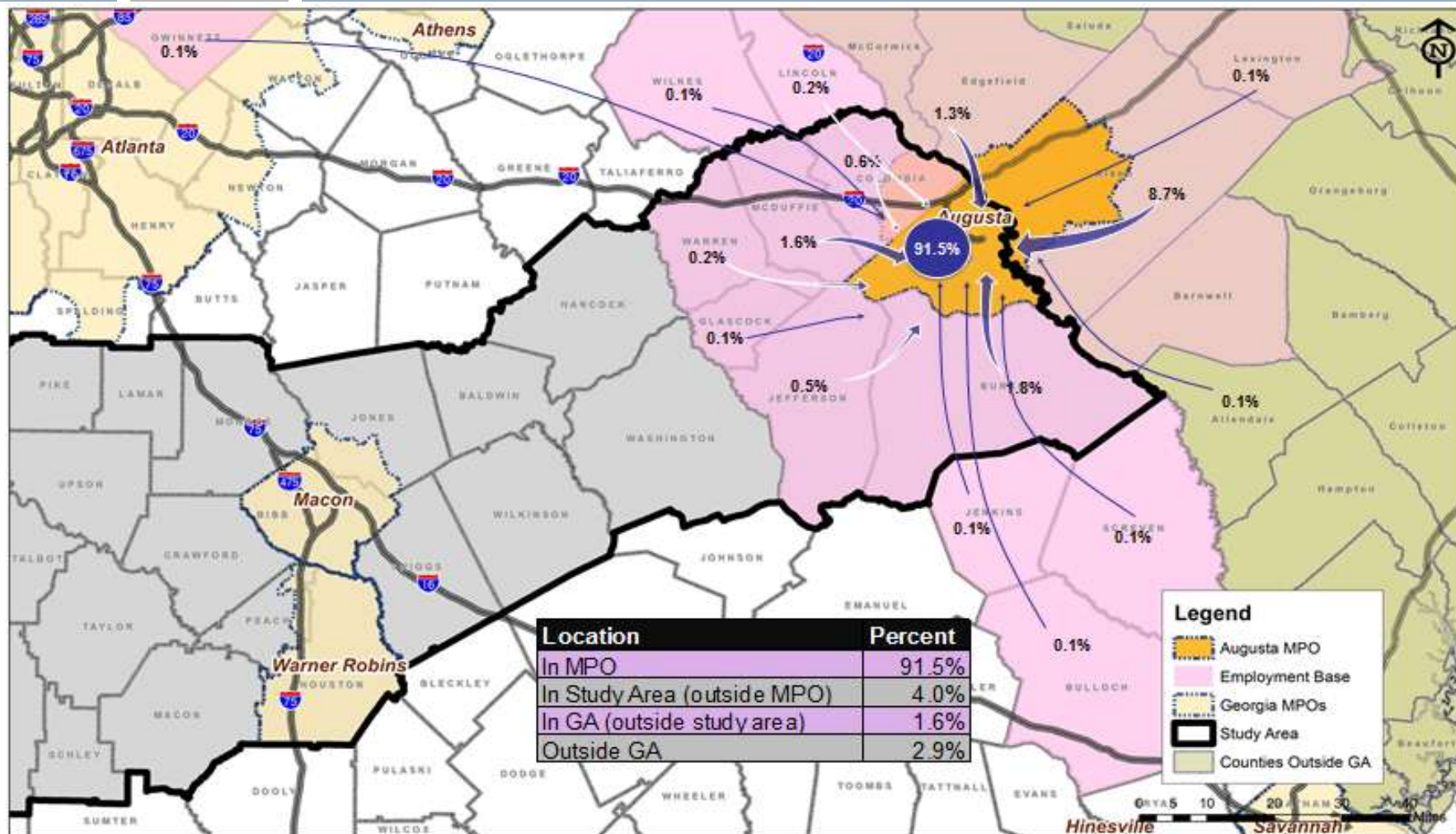
Study Area Characteristics

Journey to Work - Macon / Warner Robins



Source: 2000 Census County-to-County Work Flow Data

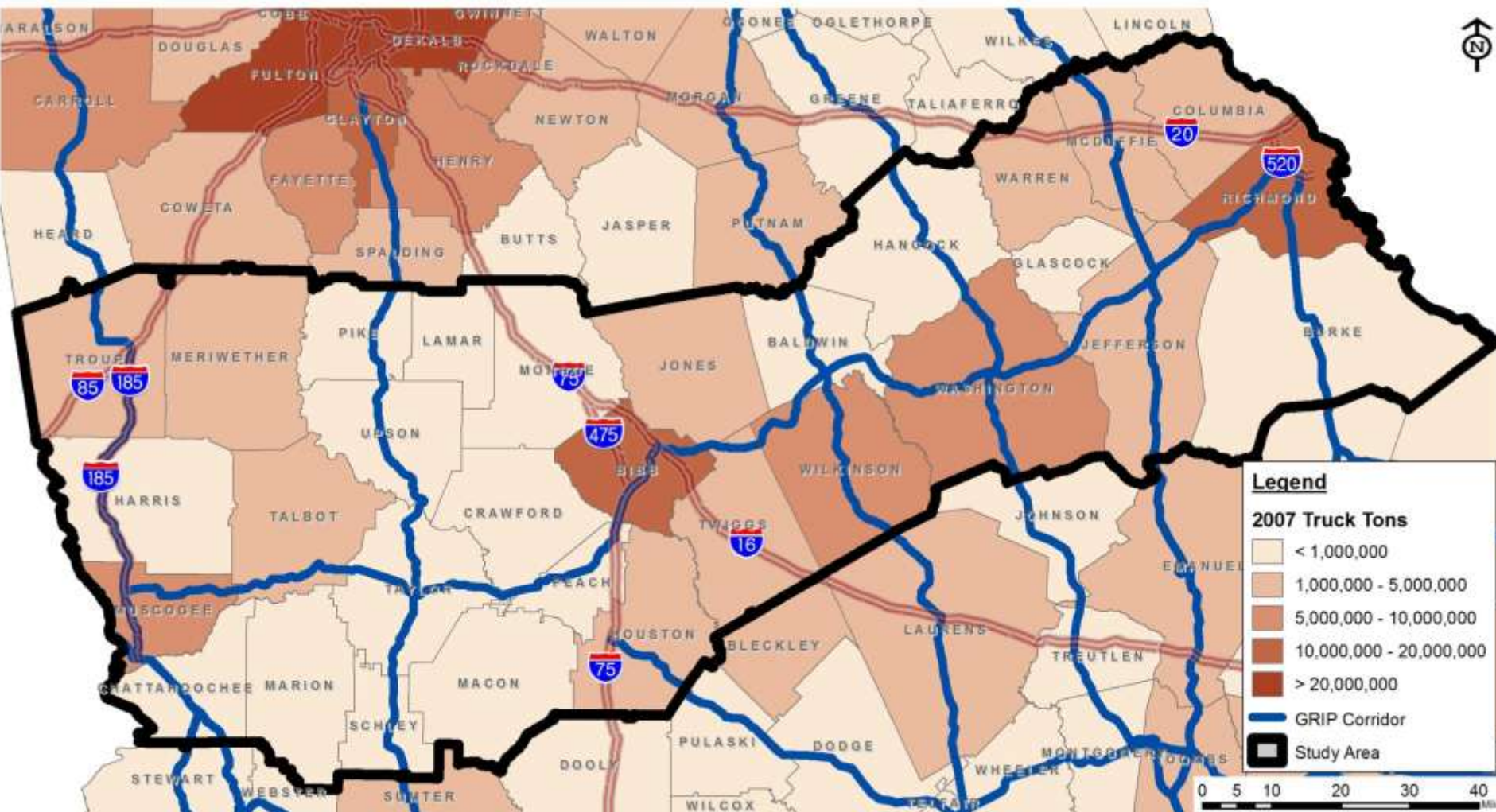
Study Area Characteristics Journey to Work - Augusta



Source: 2000 Census County-to-County Work Flow Data

Study Area Characteristics

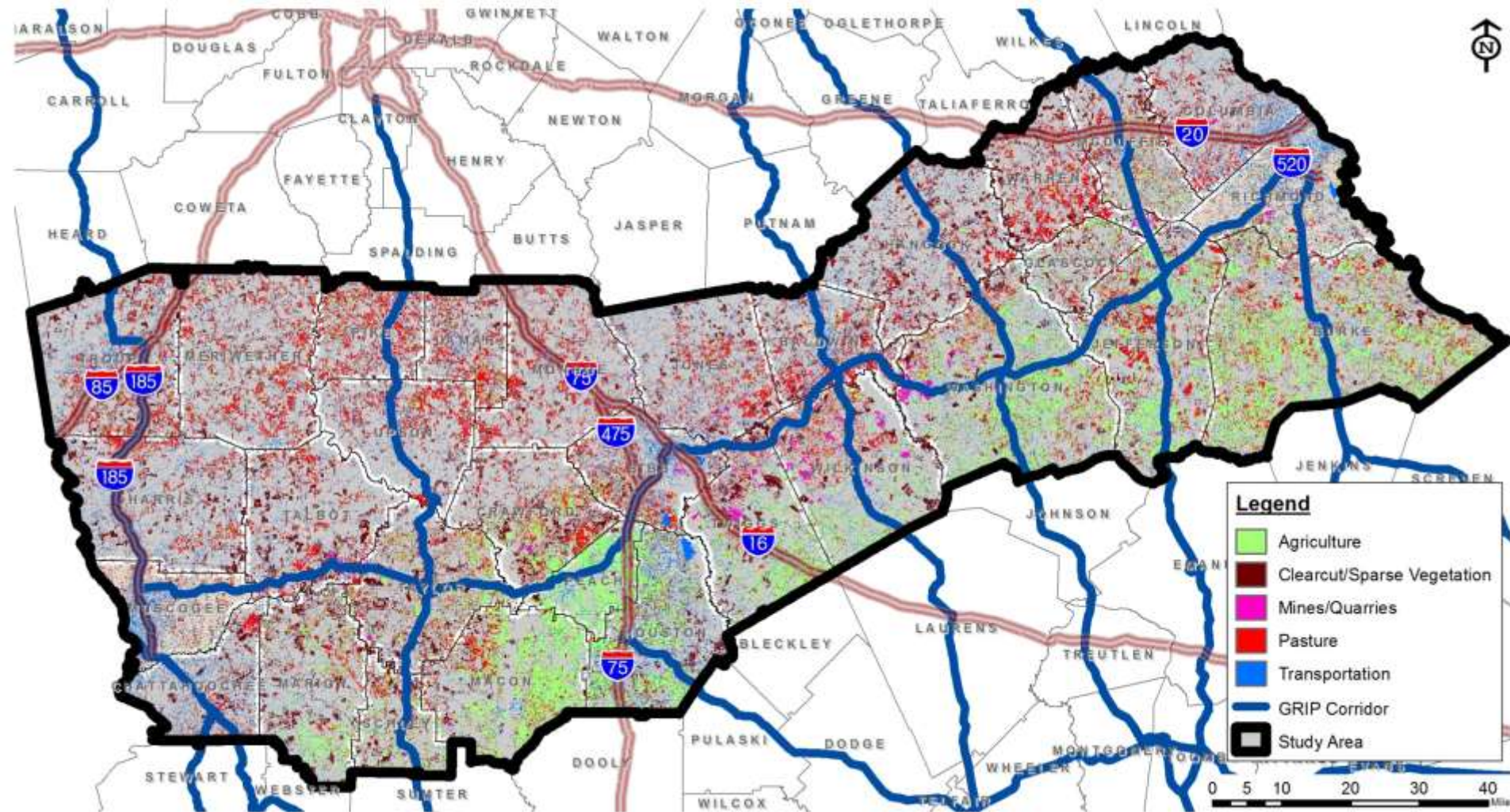
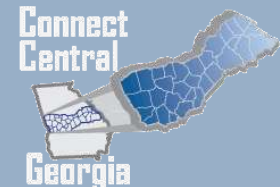
Freight Movement



Source: GDOT Freight & Logistics Plan / 2007 Transearch

Study Area Characteristics

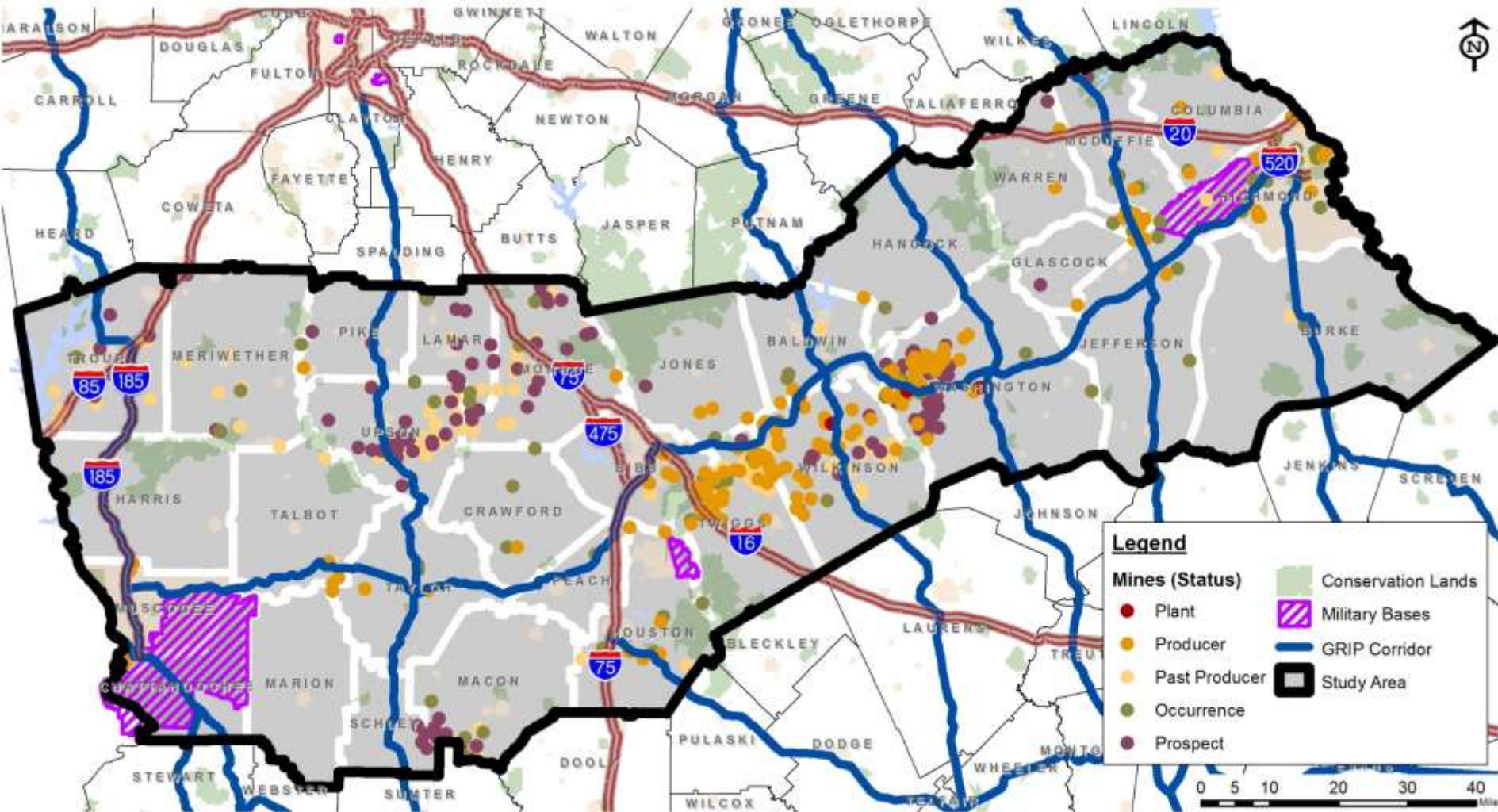
Natural Resources



Source: Natural Resource Spatial Analysis Laboratory, Institute of Ecology, University of Georgia (1998)

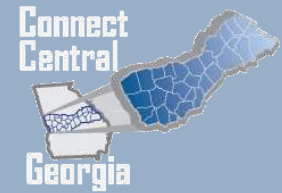
Study Area Characteristics

Economic Resources - Mining / Military



Source: USGS Mineral Resources Data System (2011)

What Will This Study Accomplish?



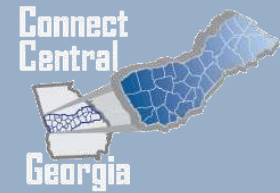
- Identify safe and efficient inter-regional connections that address future demands and maximize existing assets
 - Preserve prior investments
 - Conduct demand-based analysis
 - Address gaps
 - Prioritize potential solutions

Study Process

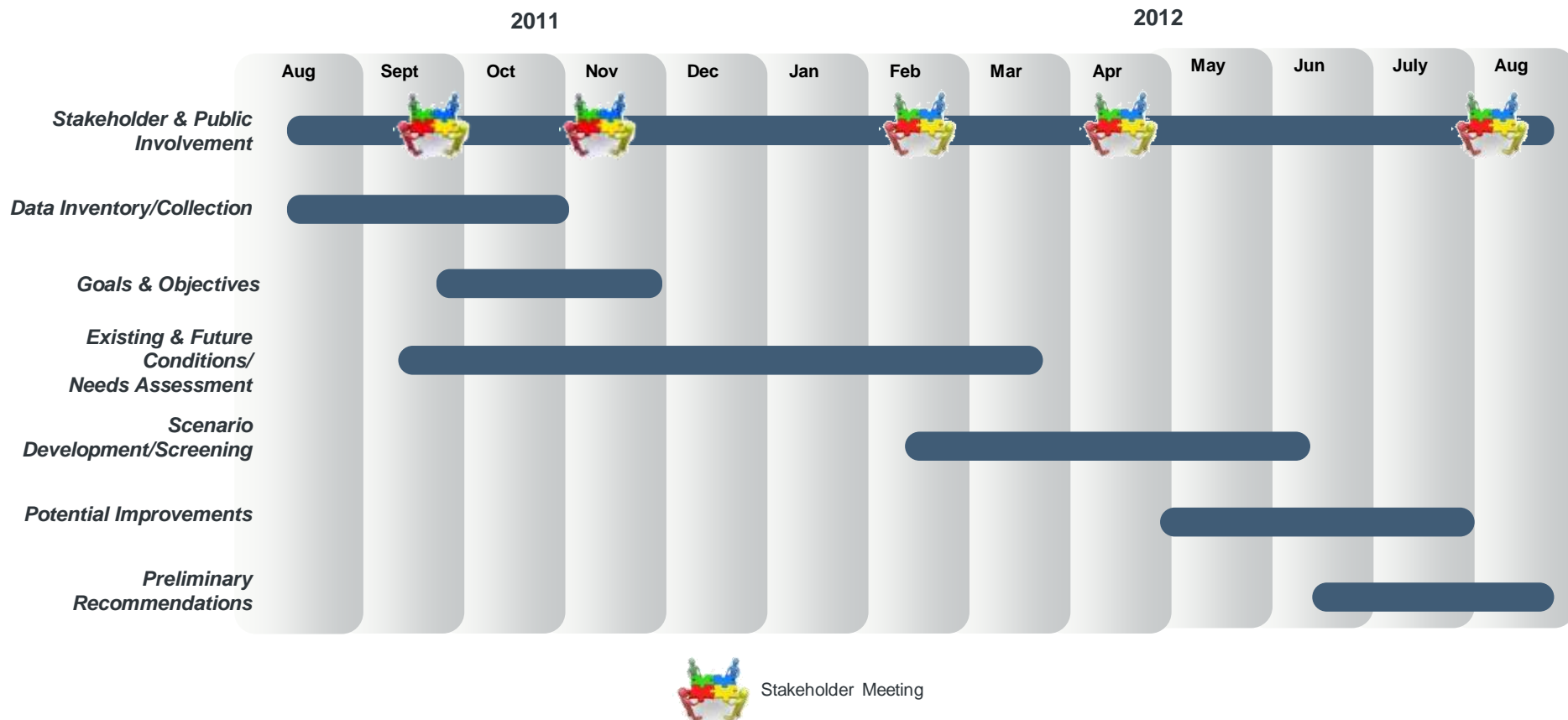


- Stakeholder & Public Involvement (Ongoing)
- Data Inventory/Collection (Ongoing)
- Goals & Objectives (Today)
- Existing & Future Conditions Evaluation/Needs Assessment
- Scenario Development & Screening
- Potential Improvements Development
- Preliminary Recommendations Development & Evaluation

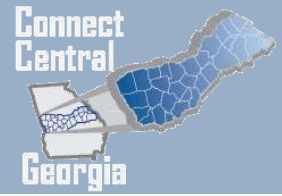
Study Progress Schedule



STUDY SCHEDULE



Stakeholder Discussions



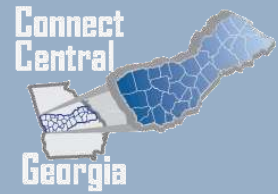
- Address “gap” in the Fall Line Freeway through Macon?
- Need for additional crossing of the Ocmulgee River?
- Improve eastern access to Robins AFB?
- Find a “good” way to get from Macon to Augusta?
- Could connectivity spur economic development?
- Do Transportation Investment Act (TIA) project lists reflect priorities to address these east-west connections?
- Other?

Today's Goals for Group Discussion



- Define a future vision for the study area
- Validate and supplement the input obtained through stakeholder interviews
- Establish clear goals and objectives to guide the study process

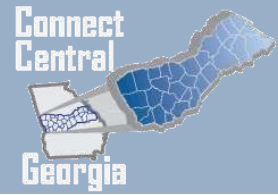
Development of Goals & Objectives



- How would you describe this area in 2035?
 - *Join in round robin discussion – share one thought or idea to be recorded.*
 - *Use meaningful key words. For example, clarify buzz words – what does “livable / livability” mean to you?*



Development of Goals & Objectives



- Develop study goals and objectives. Examples:
 - Improve safety, accessibility, and mobility options available to people and for freight.
 - Enhance the inter-regional connectivity of the transportation system for people and freight.
 - Promote efficient system management and operation.
 - Emphasize the preservation of the existing transportation system.
 - Protect quality of life, and promote consistency between transportation improvements and state and local planned growth and economic development patterns.
- Performance measures will be established based on established goals and objectives for evaluation of scenarios and alternatives.

Development of Character Areas

- What are the character areas?
 - Diverse area - Identify “character areas” based on form and function to guide alternative development
 - What unique qualities are in the area and how do they compliment one another?
 - What are key resources, issues & opportunities in the Study Area?

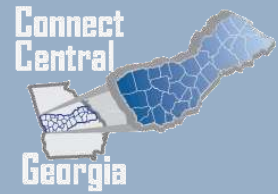


Next Steps

- Refine goals and objectives
- Complete data collection
- Complete development of travel demand model
- Conclude existing conditions analysis / initiate future conditions analysis
- Reconvene in late fall



Contact Information



Georgia Department of Transportation

Attention: Reuben Woods

Phone: (404) 631-1806

Fax: (404) 631-1957

Email: rwoods@dot.ga.gov

Website: www.dot.ga.gov/connectcentralgeorgia