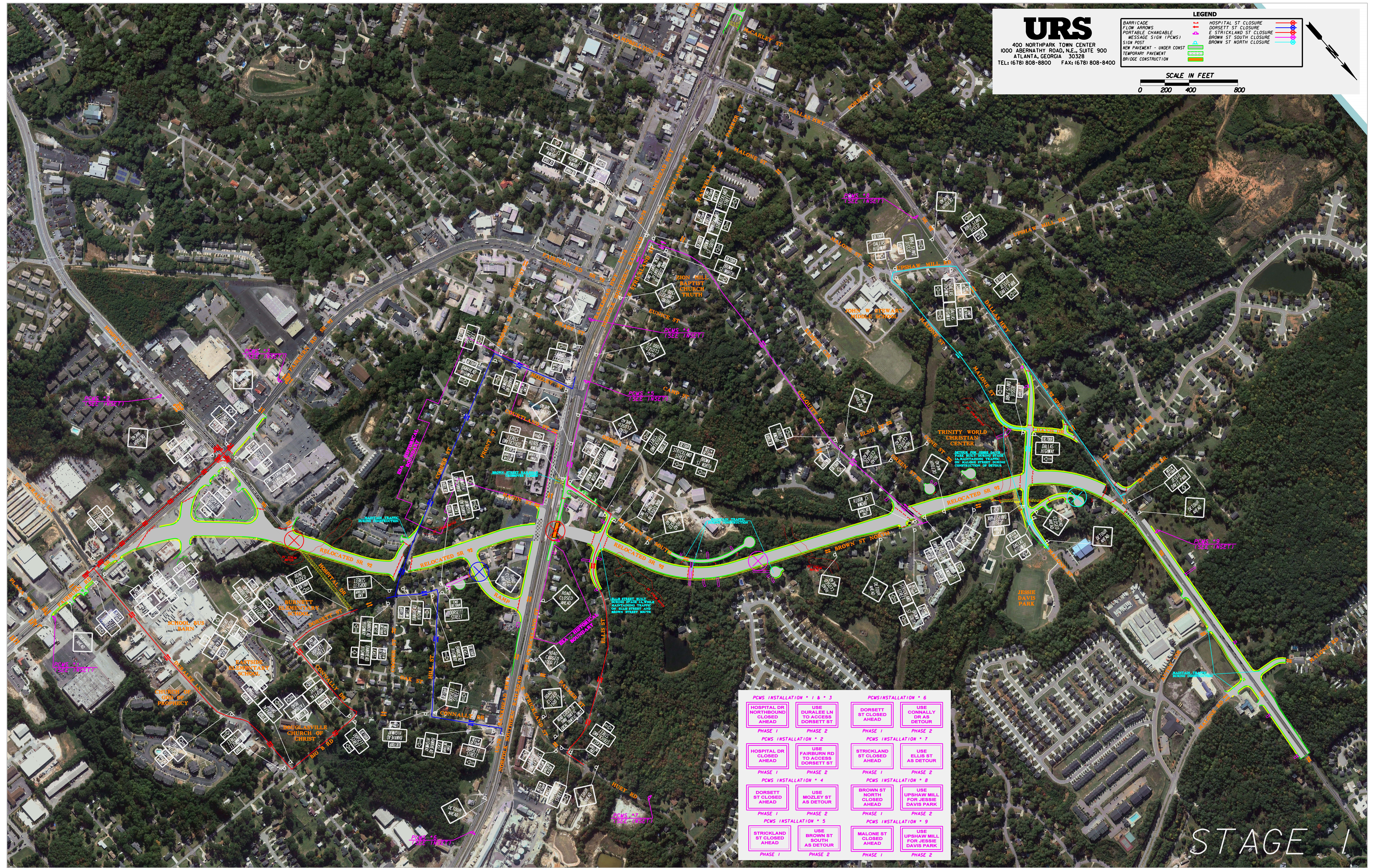
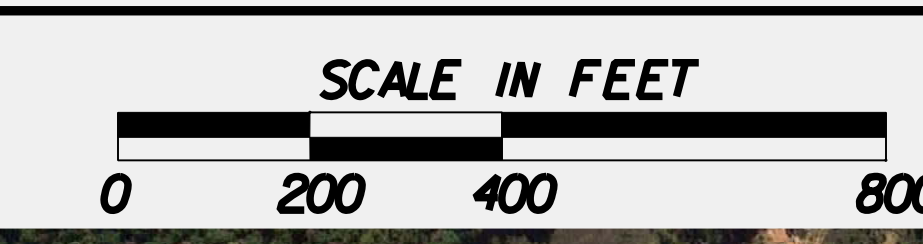


**URS**  
400 NORTH PARK TOWN CENTER  
1000 ABERNATHY ROAD, N.E., SUITE 900  
ATLANTA, GEORGIA 30328  
TEL: (678) 808-8800 FAX: (678) 808-8400

LEGEND	
BARRICADE	HOSPITAL ST CLOSURE
FLOW ARROWS	DORSETT ST CLOSURE
PORTABLE CHANGABLE MESSAGE SIGN (PCMS)	E STRICKLAND ST CLOSURE
SIGN POST	BROWN ST SOUTH CLOSURE
NEW PAVEMENT - UNDER CONST	BROWN ST NORTH CLOSURE
TEMPORARY PAVEMENT	
BRIDGE CONSTRUCTION	



PCMS INSTALLATION * 1 & 3		PCMS INSTALLATION * 6	
HOSPITAL DR NORTHBOUND CLOSED AHEAD	USE DORSETT LN TO ACCESS DORSETT ST	DORSETT ST CLOSED AHEAD	USE CONNALLY DR AS DETOUR
PHASE 1	PHASE 2	PHASE 1	PHASE 2
PCMS INSTALLATION * 2		PCMS INSTALLATION * 7	
HOSPITAL DR CLOSED AHEAD	USE FAIRBURN RD TO ACCESS DORSETT ST	STRICKLAND ST CLOSED AHEAD	USE ELLIS ST AS DETOUR
PHASE 1	PHASE 2	PHASE 1	PHASE 2
PCMS INSTALLATION * 4		PCMS INSTALLATION * 8	
DORSETT ST CLOSED AHEAD	USE MOZLEY ST AS DETOUR	BROWN ST NORTH CLOSED AHEAD	USE UPSHAW MILL FOR JESSIE DAVIS PARK
PHASE 1	PHASE 2	PHASE 1	PHASE 2
PCMS INSTALLATION * 5		PCMS INSTALLATION * 9	
STRICKLAND ST CLOSED AHEAD	USE BROWN ST SOUTH AS DETOUR	MALONE ST CLOSED AHEAD	USE UPSHAW MILL FOR JESSIE DAVIS PARK
PHASE 1	PHASE 2	PHASE 1	PHASE 2

STAGE 1