

SR 92 Relocation & Widening

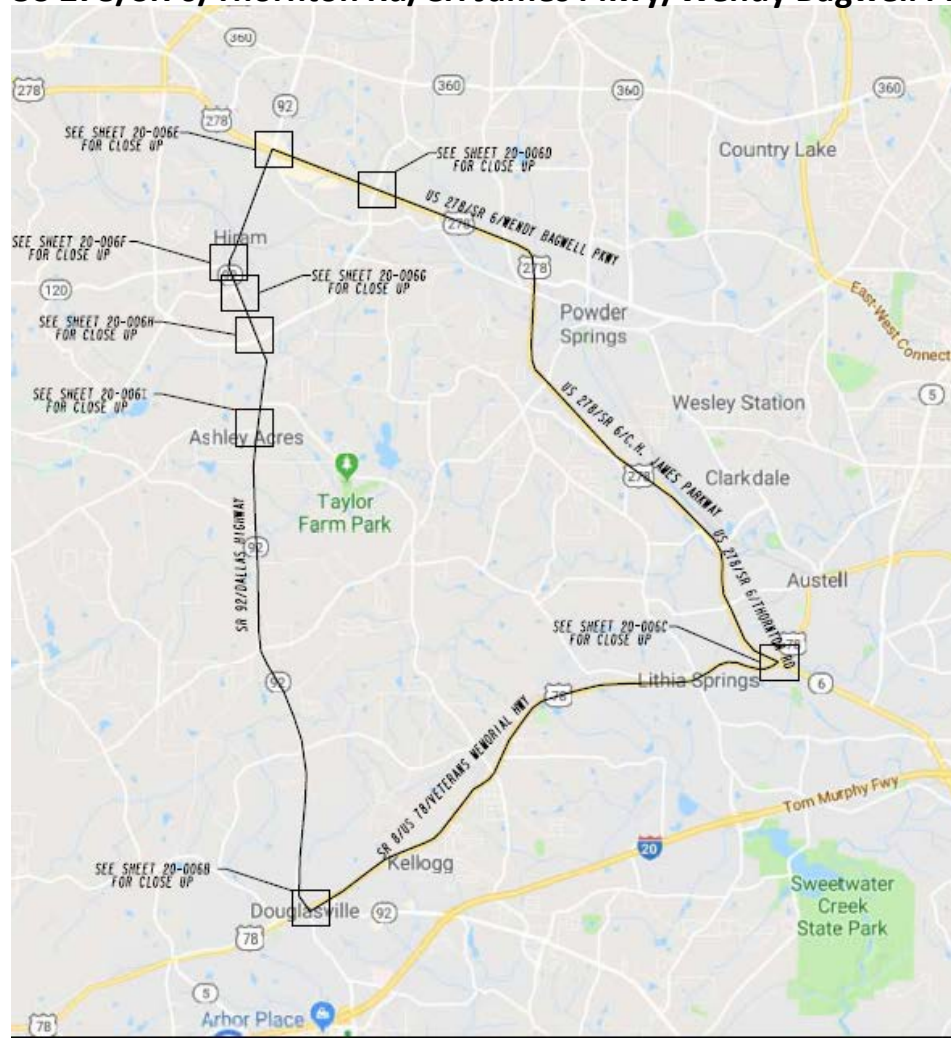
Truck Detour Due to Mozley St. RR Crossing Closure

- **On-System Truck Detour:**
 - From US 78/Bankhead Hwy to US 278/SR 6/Thornton Rd/CH James Pkwy/Wendy Bagwell Pkwy to SR 92/Dallas Hwy

SR 92 Relocation & Widening

Truck Detour Due to Mozley St. RR Crossing Closure On-System Truck Detour

From US 78/Bankhead Hwy to US 278/SR 6/Thornton Rd/CH James Pkwy/Wendy Bagwell Pkwy to SR 92/Dallas Hwy



SR 92 Relocation & Widening

Truck Detour Due to Mozley St. RR Crossing Closure - On-System Detour



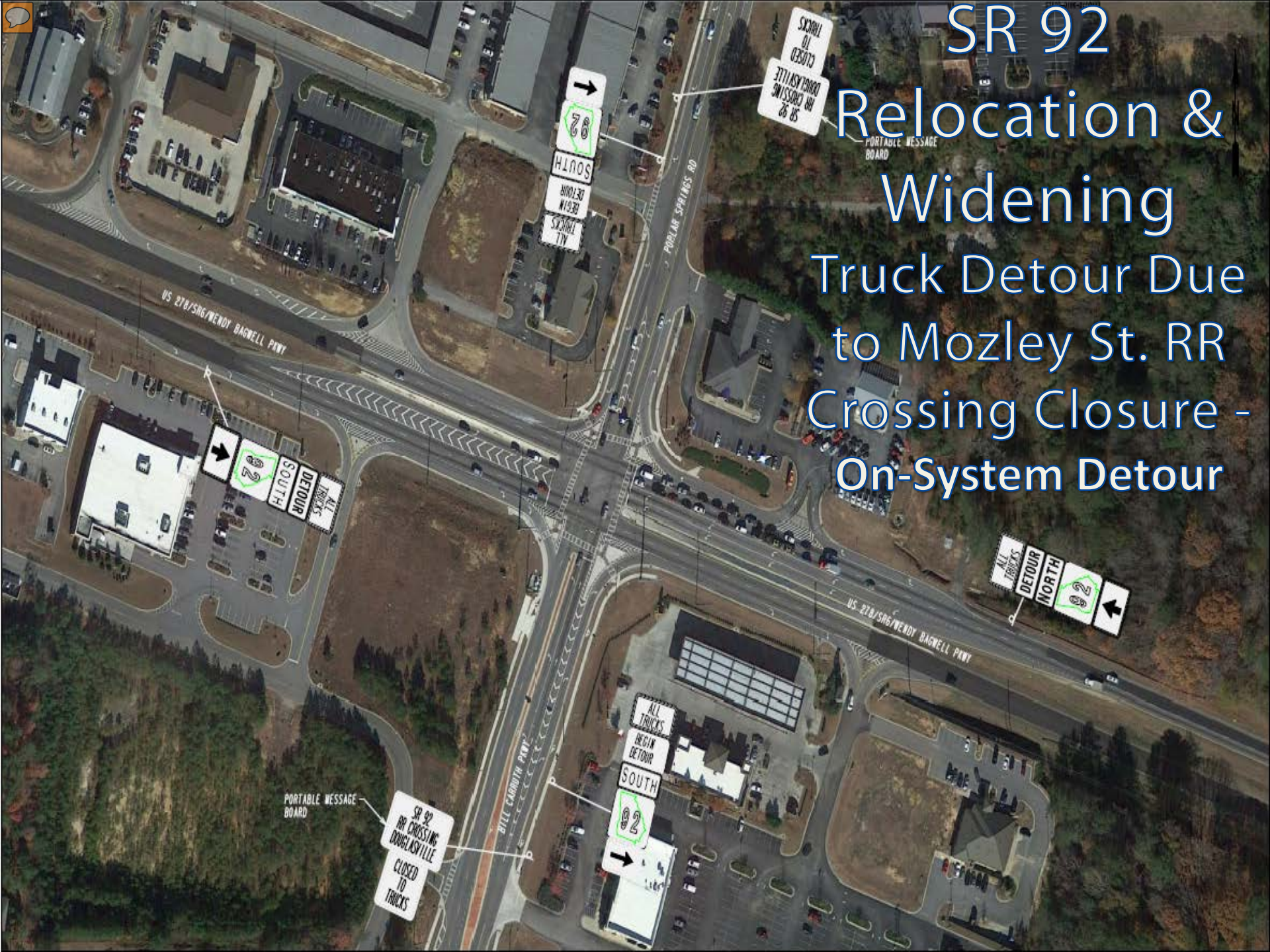
SR 92 Relocation & Widening

Truck Detour Due to Mozley St. RR Crossing Closure - On-System Detour





SR 92 Relocation & Widening Truck Detour Due to Mozley St. RR Crossing Closure - On-System Detour



SR 92 Relocation & Widening
Truck Detour Due to Mozley St. RR Crossing Closure – On-System Detour





SR 92 Relocation & Widening

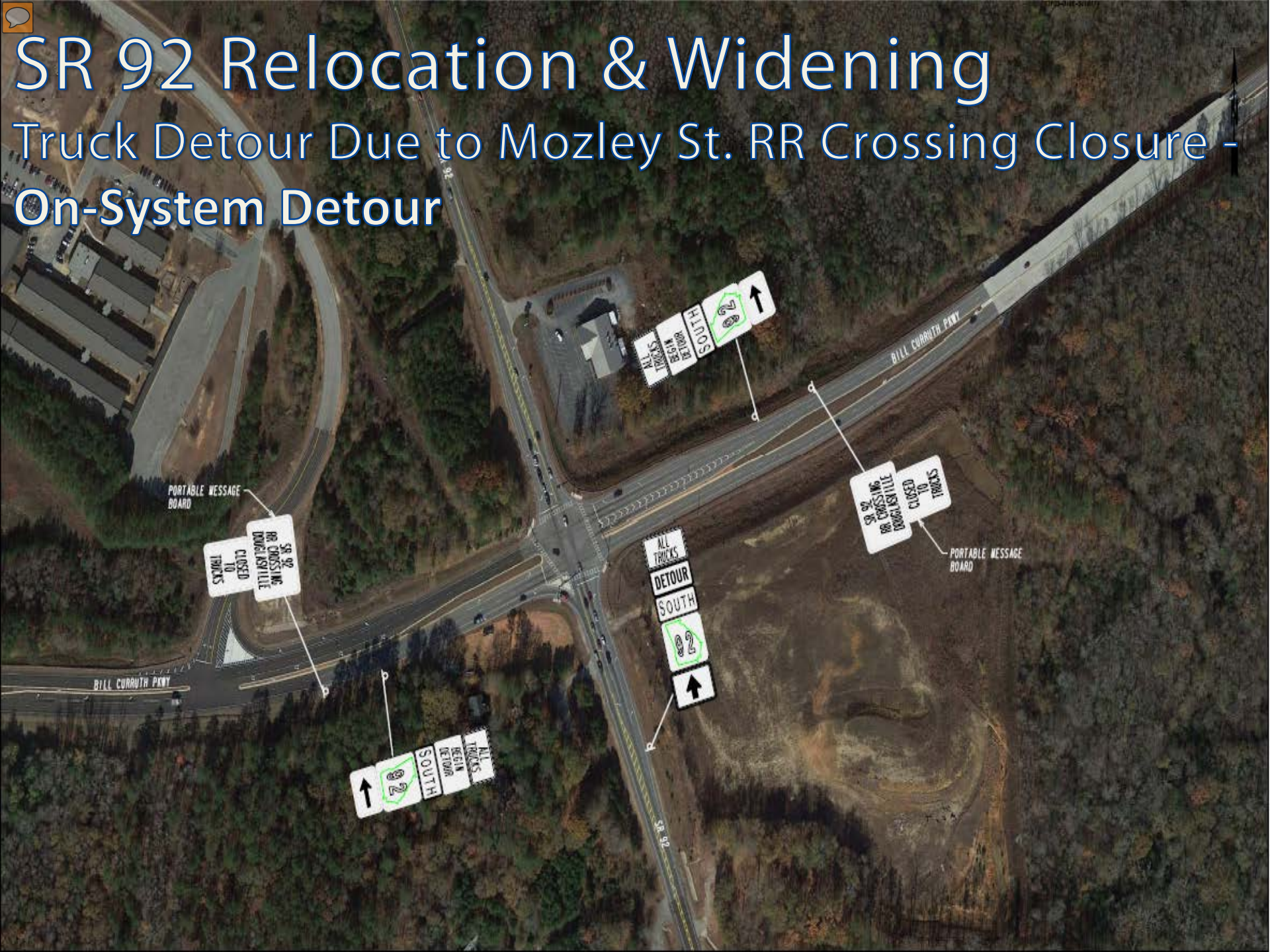
Truck Detour Due to Mozley St. RR Crossing Closure - On-System Detour





SR 92 Relocation & Widening

Truck Detour Due to Mozley St. RR Crossing Closure - On-System Detour



An aerial photograph showing a detour route for trucks. A red line indicates the detour path, starting from a main road, turning right onto a side road, then left onto a dirt road, and finally right onto a road that crosses a railroad track. A blue line shows the direct route, which is blocked by a railroad crossing closure. The area includes industrial buildings, parking lots, and a body of water.

Truck Detour Due to Mozley St. RR Crossing Closure -
On-System Detour