



Georgia Department of Transportation

# SR 92 Relocation and Widening Projects Douglasville, Douglas County

May 13, 2019





# Dana Lemon

**State Transportation Board  
Congressional District 13**



# **Kathy Zahul**

**District Engineer**

**District 7 – Metro Atlanta**

# **Abreham Medhin**

**District 7, Area 3**

**SR 92 Project Manager**



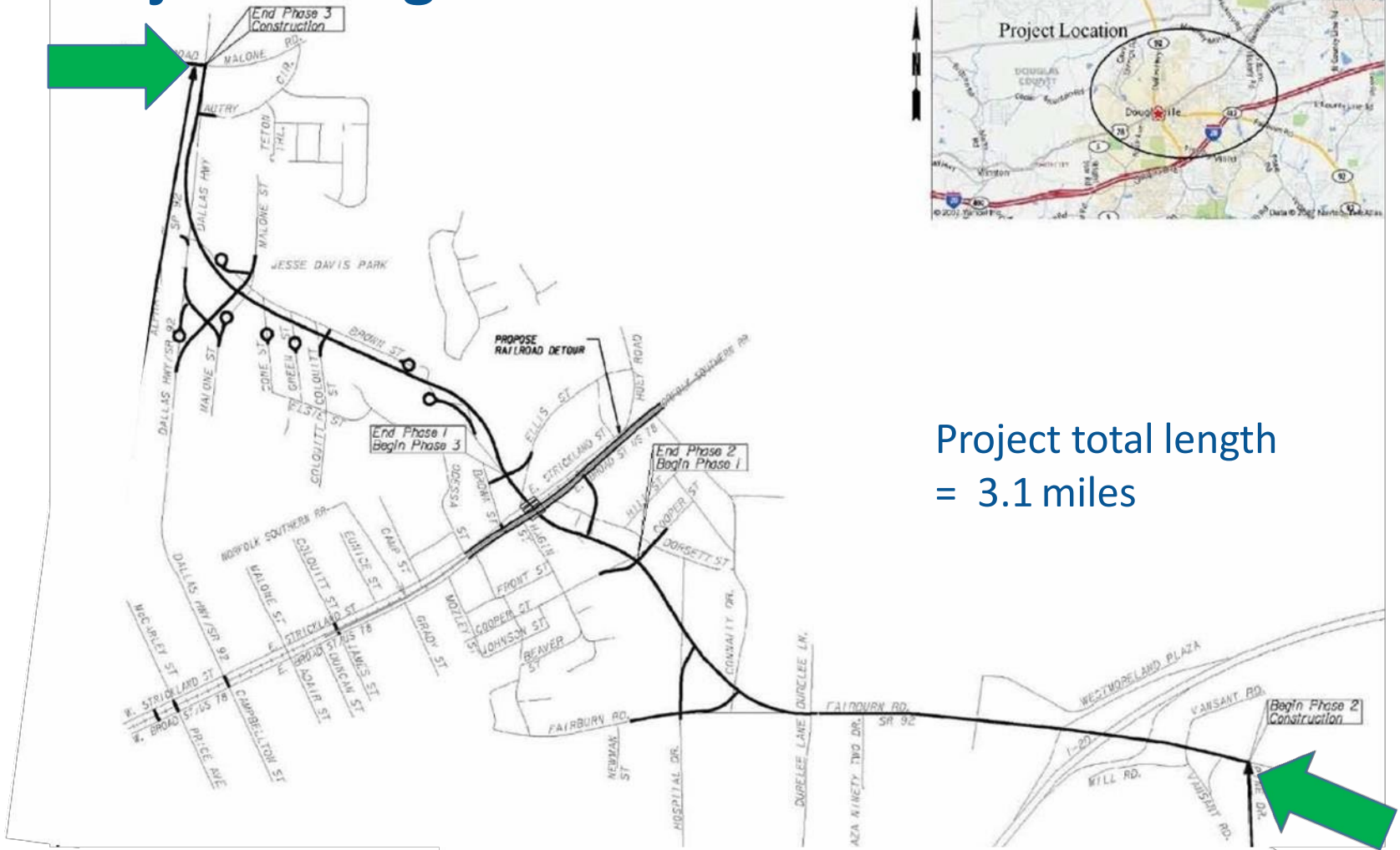
# **Rubin McCullors**

**Area Construction Manager  
District 7, Area 3**



**Project Background**  
**Project Progress**  
**Next Steps**  
**Project Schedule**  
**Wrap-Up**  
**Q & A**

# Project Background



Project total length  
= 3.1 miles

# Project Background

## **Need and Purpose:**

- Reduce traffic congestion in downtown Douglasville
- Improve vehicle and truck mobility
- Accommodate population and commercial growth in Douglas and Paulding counties
- Improve pedestrian and vehicle safety.

## **When complete, project will deliver:**

- Realigned/relocated SR 92, widened to six lanes (3 in each direction), raised medians, signalized intersections, turn lanes, sidewalks, noise barriers, multi-use trail, landscaping, lighting

**Public Involvement:** ARC RTP - PIOH in October 2009 - PHOHs in June and July 2010 – June and October 2018 Town Hall Mtgs

**Work Start:** Summer 2014

# Project Background

## **Phase I- Downtown Douglasville - PI#0006900**

- SR 92 relocation from Cooper Street to Ellis Street; excavation for bridge underpass; construction of 3 bridges at US 78/Bankhead Highway, Norfolk Southern RR, and Strickland Street; and Norfolk Southern RR crossing closures

## **Phase II – Douglasville Commercial District - PI#0006901**

- SR 92 relocation from south of I-20 (Pine Drive) to Cooper Street

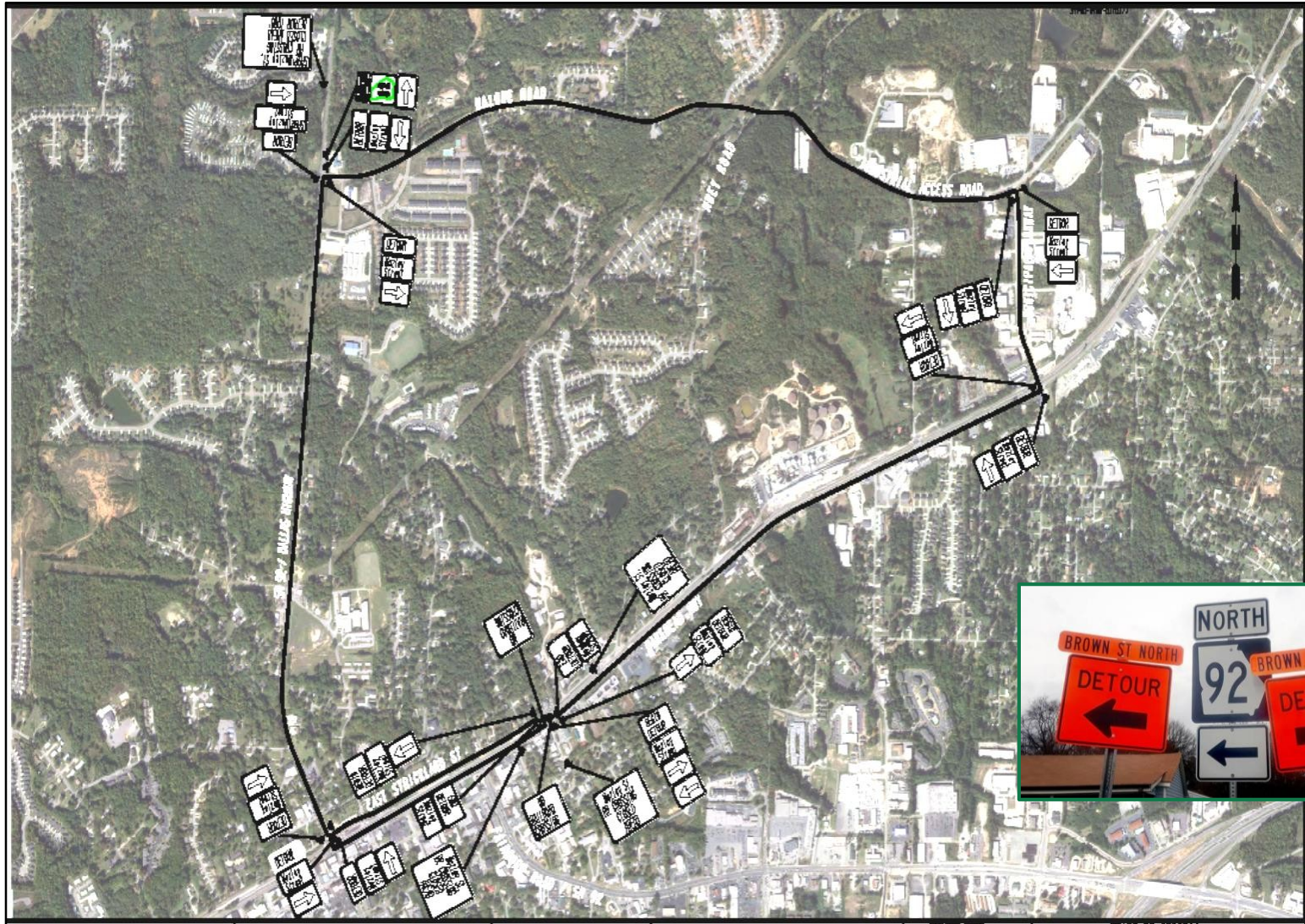
## **Phase III – Douglasville Residential District - PI#720970-**

- SR 92 relocation from Ellis Street to north of Malone Road, connects to Phase I

**Total Investment:           \$66 Million**



# Truck Detour - July 2018



## Project Progress Since Last Town Hall

- Installing sound wall barriers north of Cooper Street
- Sewer main rerouted on Davis Drive
- 16-inch water main rerouted on E. Strickland Road
- Excavated and hauled more than 30,000 cubic yards of material to prepare for underpass



# Project Progress Since Last Town Hall

- Installed Gravity Wall
- Roadway widening continues
- Targeted blasting after pre-event inspections



**Project Construction is 64% Complete**

## Next Steps

- Continued relocation of sewer and water lines
- Starting Rail Road Bridge (depth 30', width 244')
- Installing Post-Construction BMP
- Completing Hospital Drive widening
- Traffic shift on Veteran's Memorial during railroad realignment (January 6-March 30, 2020)
- Build 3 new bridges (RR, Strickland and Bankhead)

### Additional work:

- Road widening
- Asphalt paving
- Traffic signals
- Lighting installation
- Landscaping



# Project Schedule Modification

**SR 92 Underpass Open to Traffic: May 2021**

**Overall Completion Date: August 2021**

## Factors Impacting Schedule:

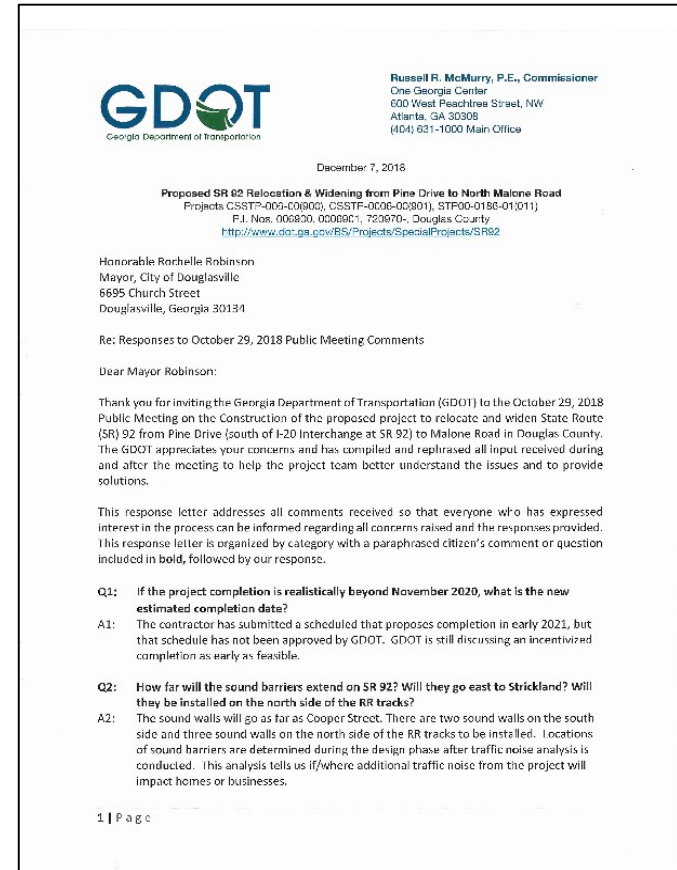
- Railroad shift
- Redesign of wall required to accommodate “revised” location
- Poorly marked utility plans / work-arounds
- Addition of retention pond and wall
- Waterline Redesign

## Continuing Schedule Risks:

- Tedious rock excavation process
- Contractor adherence to proposed schedule
- NSRR commitment to grant access Jan 2020 – March 2020

# We Hear Your Concerns

- Pedestrian safety and access
- Locations of sound walls
- Maintaining access to businesses and homes
- Traffic impacts and speeding
- Access to Jesse Davis Park via Brown Street
  - Contractor still needs to construct a pond and a wall as well as additional underground utilities.
  - Contractor anticipates working between Malone and Douglas Village Apartments throughout this calendar year
- Post updates on project website
  - Last update February 2019
  - Will be updated again after tonight
- Meetings with property owners in advance of targeted blasting
  - Georgia DOT Representative & contractors went door to door to remind residents in close proximity.
- Impacts of extended schedule



## Wrap-Up

- GDOT is willing to partner with neighborhoods and businesses impacted by construction.
- The state, the county, city, CIDs and local elected officials are each able to bring different resources to benefit our communities.
- We truly appreciate your patience and support as we continue this construction project.
- When complete, we look forward to delivering improved mobility and safety to Douglasville and Douglas County, with new infrastructure to serve a growing population and increased commerce!

# Questions?

The screenshot shows the GDOT website with the following content:

- Navigation Bar:** Home, Board, Employment, Blog, Press Room, Contact Us, Site Map, and social media icons.
- Project List (Left Sidebar):**
  - Courtland Street Bridge
  - I-16/I-75 Interchange
  - I-285 & SR 400 Improvements
  - I-285 at Flat Shoals Rd
  - I-85 Rebuild
  - I-85 Widening (I-485 to SR 53)
  - Rome-Cartersville Development Corridor
  - SR 20 Improvements
  - SR 26/US 80
  - SR 92 Relocation & Widening
  - US 441
- Project Title:** SR 92 Relocation & Widening (Douglasville)
- Description:** The SR 92 relocation and widening project in the City of Douglasville is separated into three phases:
- Table:**

PHASE	PROJECT ID	DESCRIPTION
Phase I	0005900	Includes the grade separation of relocated SR 92 at SR 5/US 78 Bankhead Highway, at Norfolk Southern Corporation railroad, and at Strickland Street. The project includes the closing of at-grade railroad crossings at Brown Street, Mozley Street, and SR 92/Dallas Highway, while relocating the McCaskey Street at-grade RR crossing 100' to the west of the existing crossing for a better grade.
Phase II	0005901	Begins at Pine Drive (south of I-20 interchange at SR 92) and goes north on new location to SR 5/US 78/Bankhead Highway where it will tie to phase one (PI# 0005900).
Phase III	720970-	Begins at the intersection of relocated SR 92 and relocated Ellis Street where it connects with Phase 1. It ends just north of the existing intersection of SR 92/Dallas Highway and Malone Road.
- Anticipated Completion Date:** November 2020
- Video Player:** SR 92 Relocation & Widening Project: Pedestrian Crossing. Includes thumbnails for "Example of a Pedestrian Crossing", "SR 92 Re-route Construction", and "SR 92 Visualization".

Please visit the GDOT project website at  
[www.dot.ga.gov/BS/Projects/SpecialProjects/SR92](http://www.dot.ga.gov/BS/Projects/SpecialProjects/SR92)

## **Project Contacts:**

**Abreham Medhin**

SR 92 Relocation Project Manager

[amedhin@dot.ga.gov](mailto:amedhin@dot.ga.gov)

770-577-8496

**Rubin McCullors**

Area Construction Manager

[rmccullors@dot.ga.gov](mailto:rmccullors@dot.ga.gov)

(404) 559-6699