



# I-285 Top End Express Lanes: History and a Path Forward

Tim Matthews, P.E.  
MMIP Program Manager



Why We Are Here



# Why We are Here Today

- History and Growth of I-285 corridor
- Revive285 Notice of Intent (NOI) Rescission
- MMIP and Express Lanes Benefits
- I-285 Top End Express Lanes – Next Steps

# History of I-285 Corridor

## Legend

- Population
- Employment

**1969**

I-285 is first built with **2 lanes** in each direction



**1980's**

I-285 corridor experiences **200% increase** in employment density



**1989**

I-285 corridor is widened to **4 lanes** in each direction



**1996**

I-285 corridor is widened to **5 lanes** in each direction



**2000**

High Occupancy Vehicle (HOV) System Plan



**2006 - 2013**

Revive285 NOI issued and proceed to planning



**2009**

Managed Lane System Plan (MLSP)



**2012 - 2020**

I-285 Corridor Operational Improvements (Revive285 Breakout Projects)



**2028**  
I-285 Top End Express Lanes

Forecasted Growth





# Unprecedented Growth in Metro Atlanta

## Metro Atlanta by the Numbers



**5.8** Million People



**8,723** Square Miles



Fortune 500 HQ: **15**  
Fortune 1000 HQ: **11**



**Increase In Metro  
Atlanta home sales:**  
**11%** (since 2017)



**#1** Busiest Airport  
in the World

Sources: Metro Atlanta Chamber, Metrostudy

## Metro Atlanta

by the numbers:



**15.7%** population  
increase since 2010



**65.2%** employment rate

## Major companies located in metro Atlanta



Mercedes-Benz



# Revive285 Notice of Intent (NOI) Rescission

- What is a Notice of Intent (NOI)?
  - Mandated by Federal Highway Administration to advertise the initiation of an Environmental Impact Statement (EIS) process
- **Revive285 NOI**
  - In 2006, a NOI was issued for Revive285 announcing the preparation of the National Environmental Policy Act (NEPA) document.
  - The Revive285 NOI will be rescinded later this year, formally closing the EIS process for the project.

# Revive285 Environmental Impact Statement (2013)

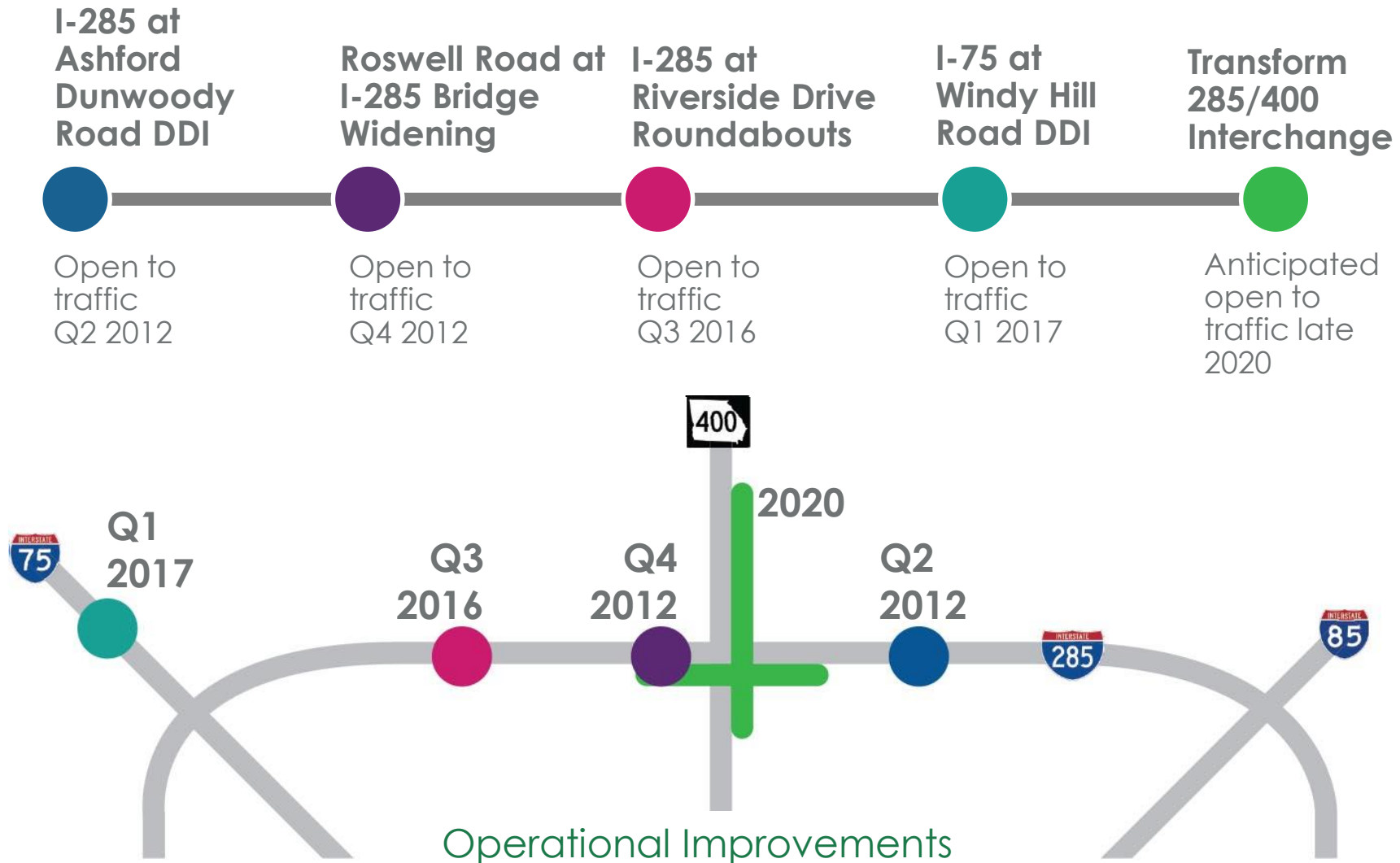
## Alternatives Considered:

- Transportation System Management
- Operational improvements
- Express lanes + transit options:
  - Bus rapid transit (BRT)
  - Xpress bus
  - Light rail transit (LRT)

- Full project funding was not available
- Limited funding allowed for Operational Improvement Projects



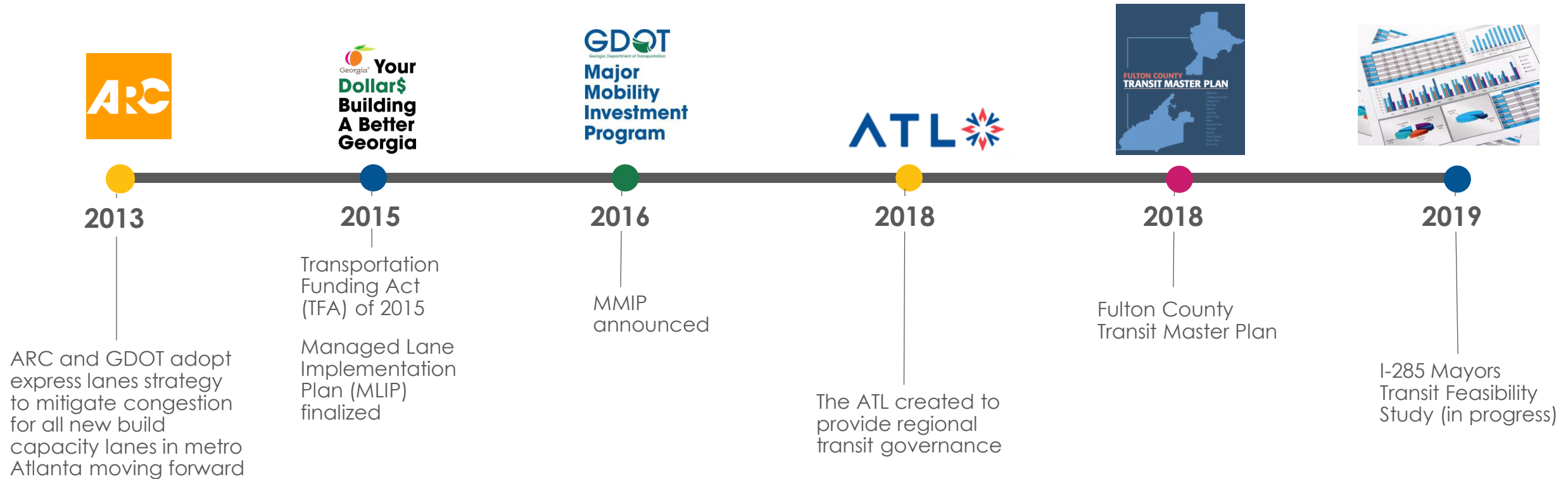
## Projects Advanced from Revive285



*\*Information and schedule are subject to change.*



# Transitioning from Revive285 to I-285 Top End Express Lanes



*\*Information and schedule are subject to change.*

## Express Lane Benefits



**More Reliable** Travel Times

**More Consistent** Travel Speeds



**Enhanced Transit**  
Options and Opportunities

## Northwest Corridor Express Lanes Success



Rush hour has been reduced by **1 hour**

**4.2M**



Total trips: **4.2 million**

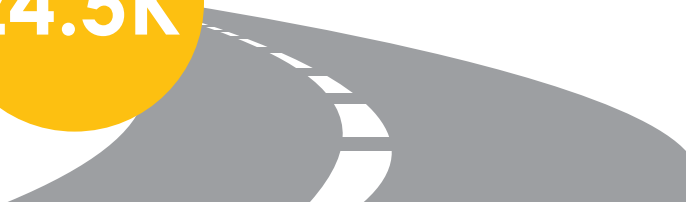


Travel **speeds are 30% faster** in the express lanes than in the general purpose lanes

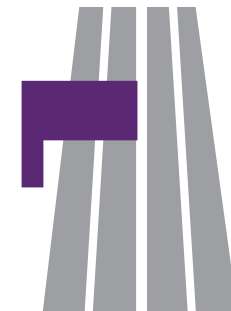


Average daily fare: **\$1.70**

**24.5K**



Weekday trip average: **24,500**



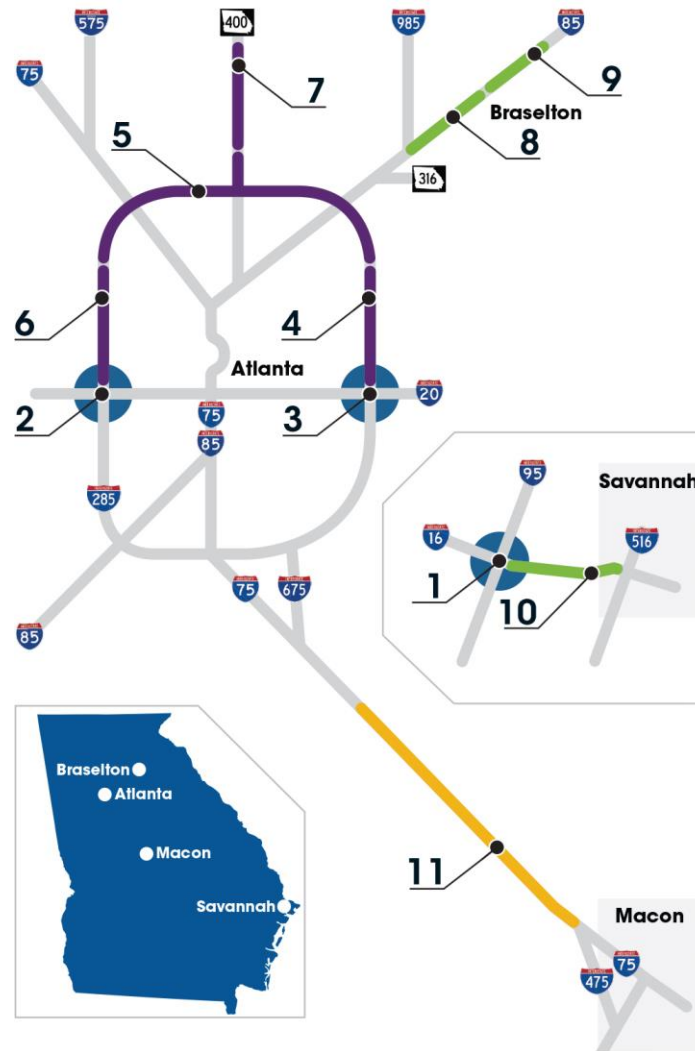
GP lanes are up to **20 mph faster** than they were before the express lanes opened

*\*Information and schedule are subject to change.*

# Major Mobility Investment Program (MMIP)



# MMIP Projects and Location Map



## Interchange Reconstruction:

1. I-16/I-95
2. I-285/I-20 West
3. I-285/I-20 East

## Express Lanes:

4. I-285 Eastside
5. I-285 Top End
6. I-285 Westside
7. SR 400

## Interstate Widening:

8. I-85 Phase I
9. I-85 Phase II
10. I-16

## Commercial Vehicle Lanes:

11. I-75

*\*Information and schedule are subject to change.*



# Proactive Outreach to Date



**Over 150 meetings** in the past 2 years with:

- HOAs
- Cities
- Counties
- Rotary clubs
- Community Improvement Districts
- Schools

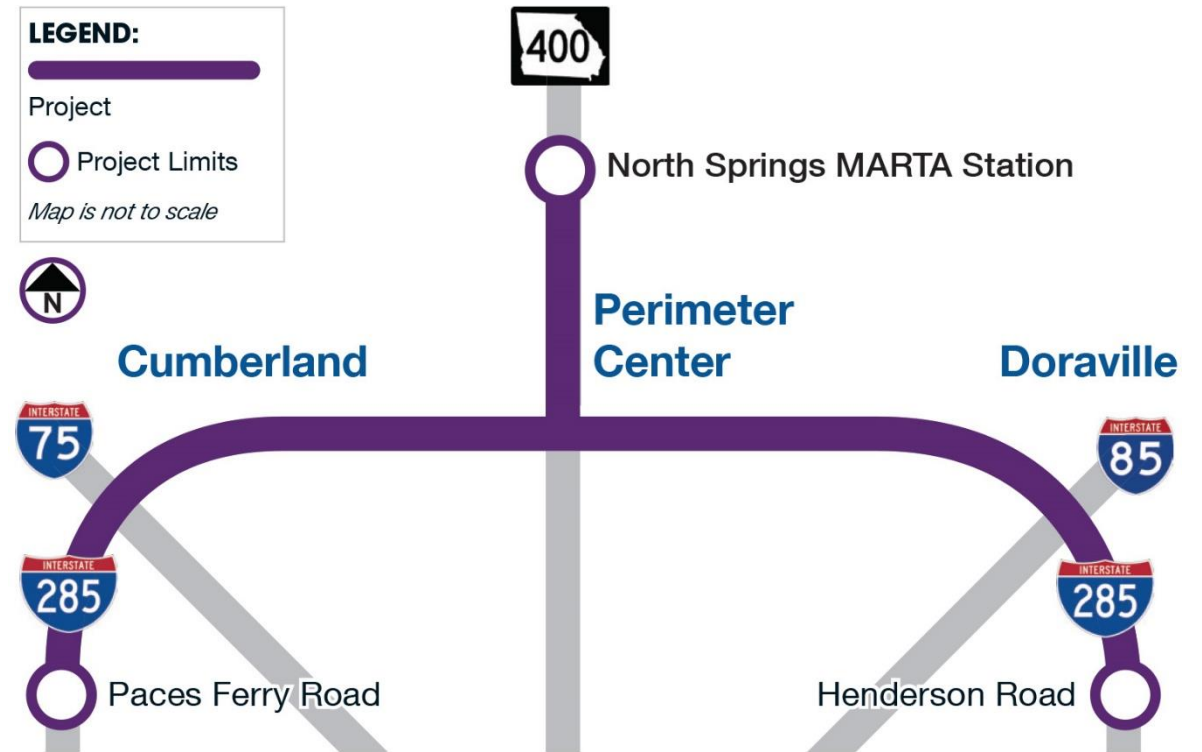
*\*Information and schedule are subject to change.*

# I-285 Top End Express Lanes



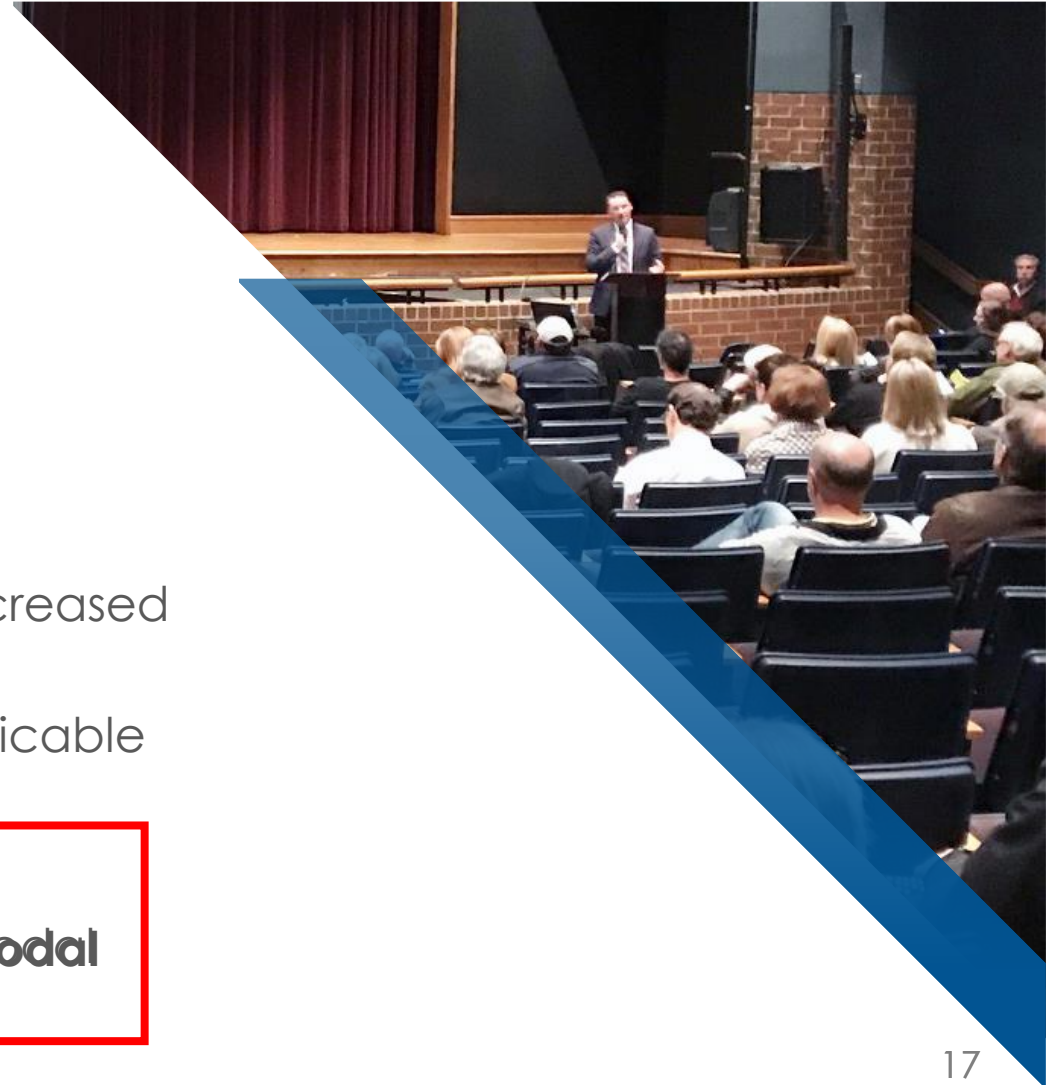
# I-285 Top End Express Lanes

- Two new barrier-separated express lanes in both directions – at grade and elevated
- Part of the larger Georgia Express Lanes network
- Pre-Concept/Early Environmental phase
  - **Issuance of project NOI**
  - No detailed plans yet
  - Local coordination regarding express lanes access and transit accommodations



# Program/Project Delivery Objectives

- Leverage One Federal Decision process
- Create efficient design
- Incorporate innovative technology
- Leverage tolls revenue
- Support transit operations
- Consider a reasonable range of alternatives
  - Avoid and minimize impacts as much as practicable
  - Mitigate project effects
  - Minimize property acquisitions
- Consider acquiring early right-of-way to offset increased acquisition costs due to development
- Implement project components as soon as practicable with availability of project funding
- **Catalyst to future corridor improvements**
- **Secure multi-agency funding to build full multi-modal corridor improvements**



# Mobility Partnerships



Responsible for planning, constructing, maintaining, and improving the State's roads, bridges, and interstates.



**ATL**

**marta**

**COBB  
LINC**

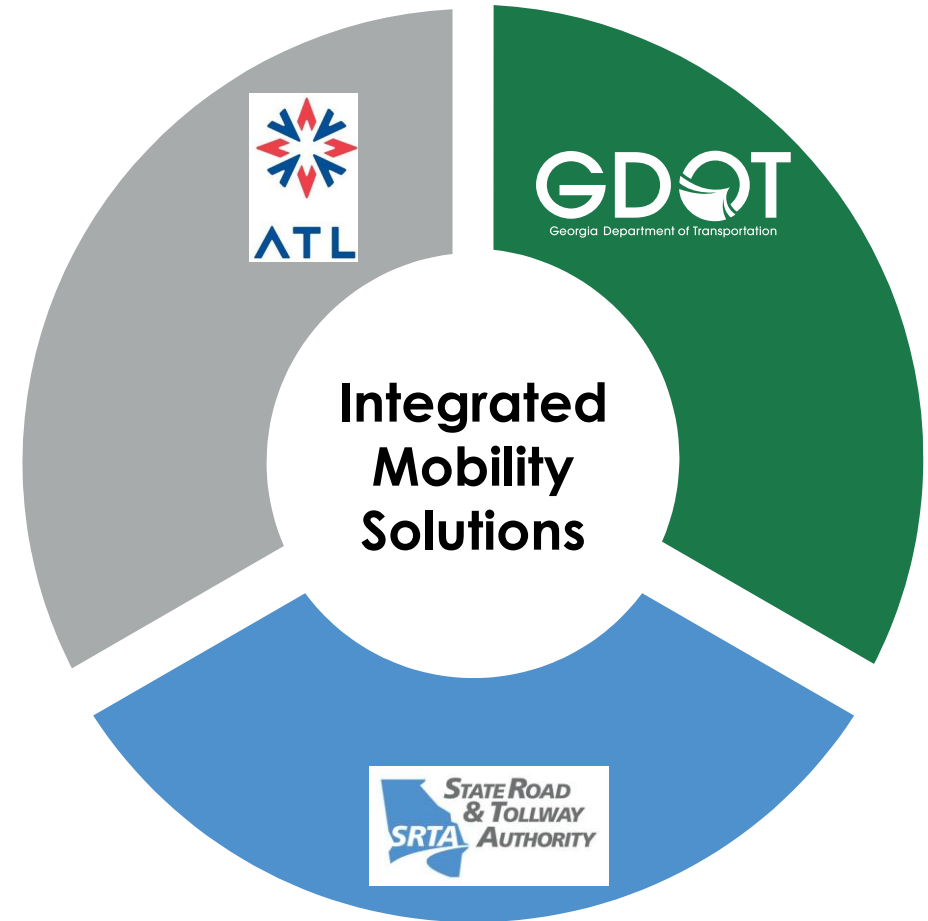


**Xpress**

Metro Atlanta transit operators are responsible for operations of various transit options available including heavy rail, light rail, and bus transit system and the advancement of transit in the metro area.

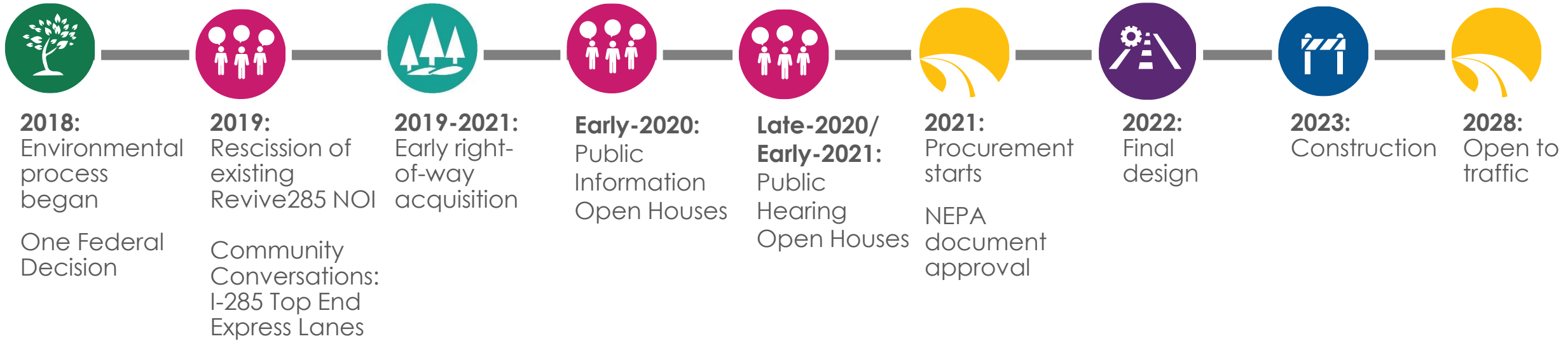


Collects toll revenue and responsible for operations for express lane systems within Georgia.





# I-285 Top End Express Lanes Timeline

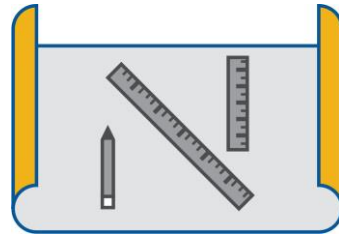


*\*Information and schedule are subject to change.*

## Next Major Milestone: Public Information Open Houses (PIOHs) Early 2020



Environmental  
process



Current concept  
layout



Transit coordination



Refined right-of-way (ROW)  
needs



Potential express lane  
access points

*\*Information and schedule are subject to change.*

# Project Staff in Attendance

- Project team
- Environmental
- Right-of-way
- MARTA
- SRTA

*\*Information and schedule are subject to change.*



## I-285 Top End Express Lanes Contact Information



<http://www.dot.ga.gov/DS/GEL/I285TopEnd>



[TopEndExpressLanes@dot.ga.gov](mailto:TopEndExpressLanes@dot.ga.gov)



404-978-7490 (project hotline)



#285TopEnd

THANK  
YOU



@GeorgiaDOT



@GADeptofTrans



@gadeptoftrans



[www.dot.ga.gov/MMIP](http://www.dot.ga.gov/MMIP)