
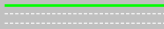




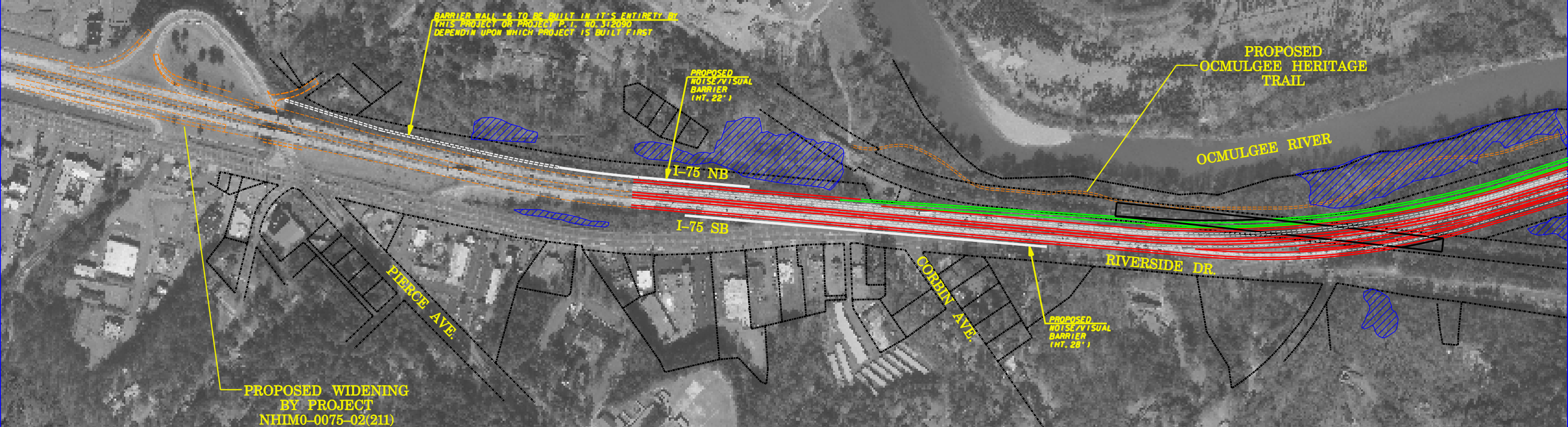
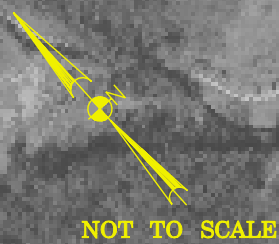


I-16 /I-75 INTERCHANGE IMPROVEMENTS

PROJECT NO. NHIM0-0075-02(177)
I-75 FROM I-16 TO PIERCE AVE.

LEGEND	
	PROPOSED INTERSTATE SYSTEM
	PROPOSED CD ROADS
	PROPOSED SERVICE RAMPS & SIDESTREETS
	PROPOSED BRIDGES
	EXISTING PROPERTY LINES
	WETLANDS

MA Moreland Altobelli Associates, Inc.



PRELIMINARY

NOTE:
THIS DRAWING REPRESENTS A
PRELIMINARY DESIGN FOR THE
REFERENCED PROJECT AND IS
SUBJECT TO CHANGE. PLEASE CHECK
THE PROJECT WEBSITE (WWW.I16I75.COM)
FOR UPDATES.