

Regional Traffic Operations Program

Grant Waldrop, P.E.

Regional Traffic Operations Manager



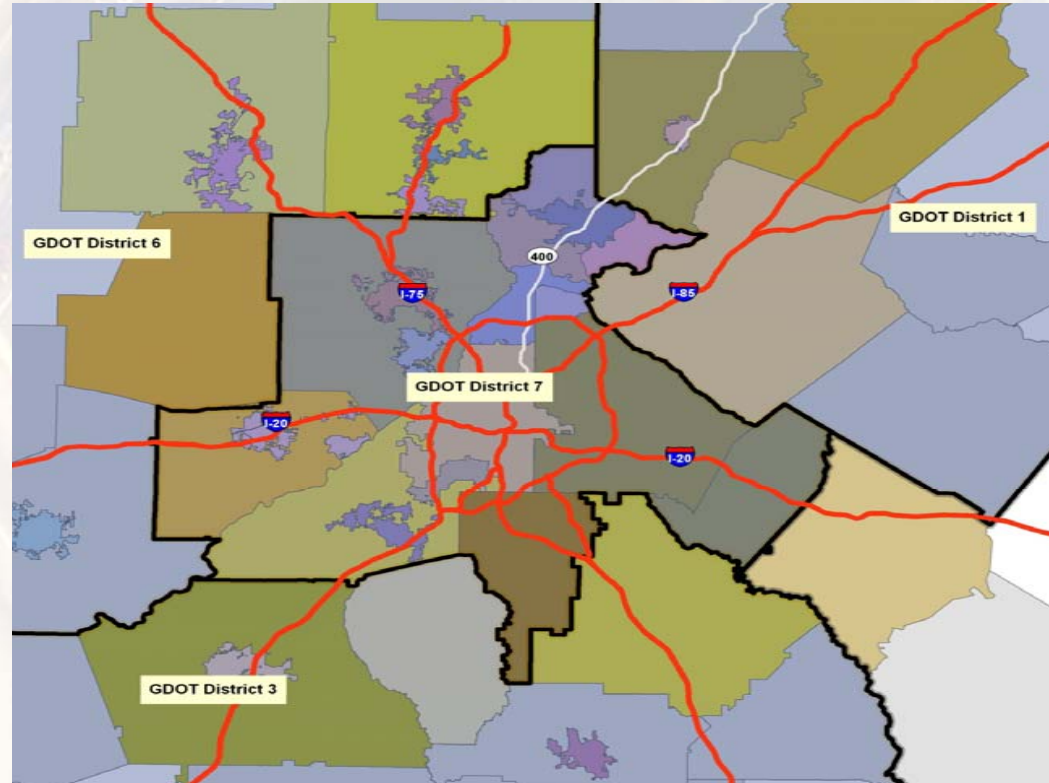
Overview

- The Atlanta Region
- Regional Traffic Operations Program (RTOP)
- Selected Routes
- Program Approach
- Progress to date



Who Operates the Traffic Signals?

- In most major metropolitan areas:
 - State DOT manages the freeway network
 - Local agencies manage arterials
- In Atlanta:
 - 4 GDOT Districts
 - 15 Counties
 - 22 Cities



Traffic Signal Programs

- Poor signal timing
 - 5 to 10 percent of all traffic delay
 - 295 million vehicle-hours of delay on major roadways
- Near end of Metro Signal Timing
 - Estimated Savings: \$48,935,294
 - Benefit/Cost of 16 to 1
- Program Limitations
 - Hardware repair
 - Timing maintenance
 - Active management



Motivation for RTOP

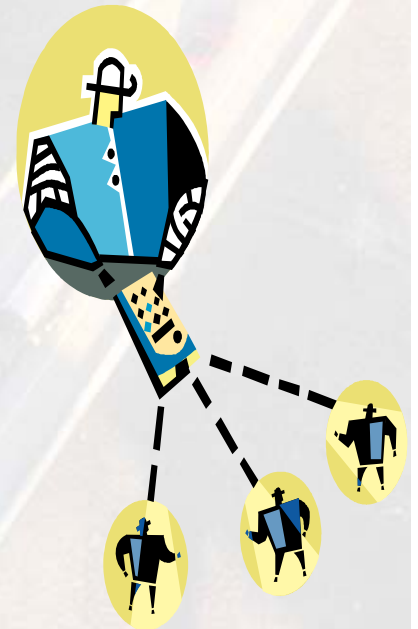
- Traffic Signal Maintenance and Repair Issues
- Regional Focus
 - ✓ Mainline Priority
 - ✓ Cross-Jurisdictional
- Actively Manage Traffic Flow



Mission: To increase travel throughput by minimizing congestion and reducing delays along regional commuter corridors through improved signal operations.

What is Arterial Management?

- Preventative/Routine traffic signal maintenance
- Communications to traffic signals
- Surveillance at key locations
- Travel time analysis and system performance
- Active signal timing adjustments
- Rapid repair of equipment malfunctions
- Transit/Emergency vehicle preemption

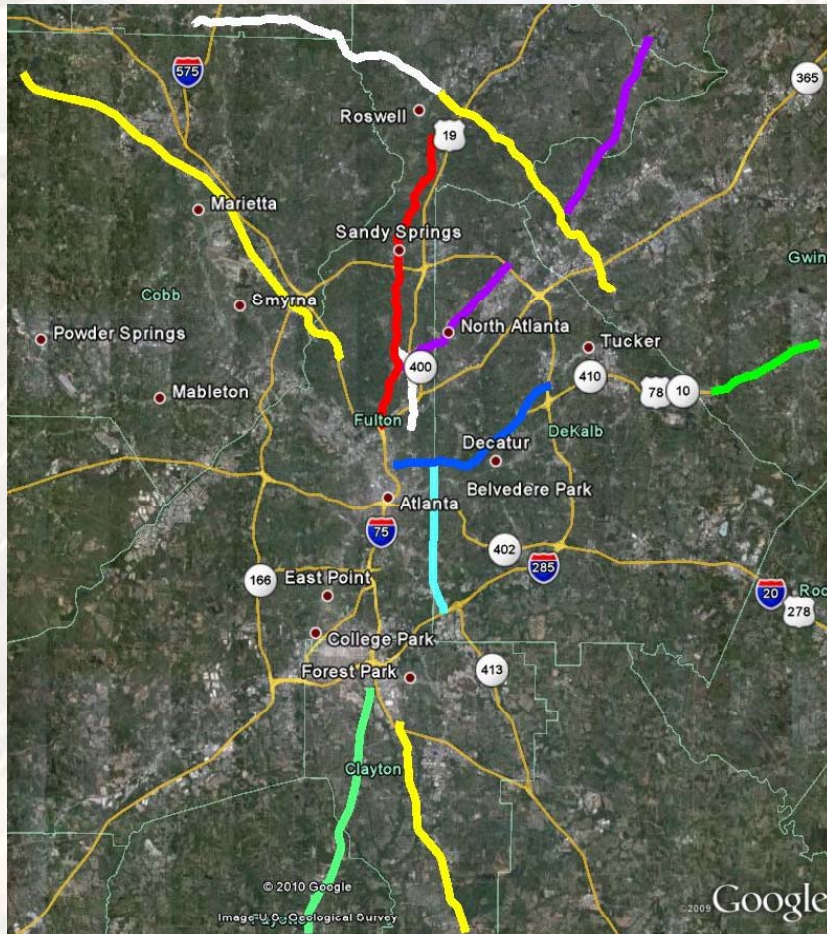


Route Selection Process

Three step approach:

1. Office of Planning identified corridors
2. Refined corridors base on operational considerations
3. Prioritized corridors in coordination with Atlanta Regional Commission

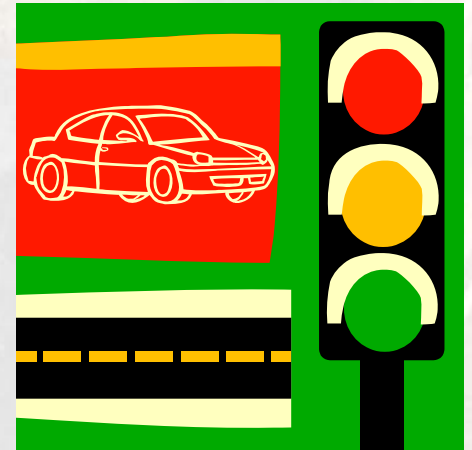
Regionally Significant Corridors



- US-41/Cobb Pkwy
- SR 92
- SR 140/Holcomb Bridge Rd/Jimmy Carter Blvd
- SR 9/Roswell Rd
- Piedmont Rd
- SR 141
- SR 8/Ponce De Leon/Scott Blvd
- US-78
- SR 42/Moreland Ave
- SR 85
- US -41/Tara Blvd

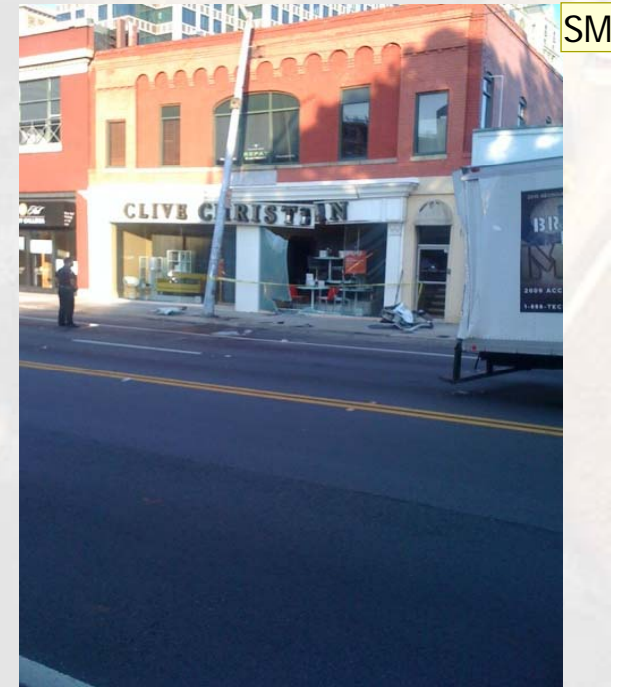
Progress to Date

- NTP Issued: 6-9-10
- Inventoried intersections
- Coordinating with local agencies
 - Some agencies taking lead role to implement program
 - Adding to existing efforts by the maintaining agencies
 - Memorandum of Understanding



Progress to Date

- Quick Fixes
 - ✓ 500+ Offset/Splits Changes
 - ✓ 50+ Time clock Adjustments
- Systematic Approach
- Incident Response
 - Roswell Road at Peachtree Road Truck Accident
 - Piedmont Road Water Main Break
 - SR 141 North Master Failure



Slide 10

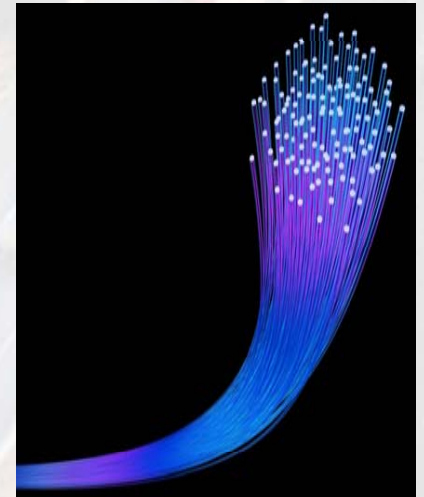
SM1

Not the best picture....

Shahram Malek, 9/7/2010

Next Steps

- Actively manage Group 2 Corridors
- Develop communication plans
- Develop deployment plans for smart devices
- Travel time detection and reporting
- Work order and trouble tickets





Questions?

Grant Waldrop, P.E.
Regional Traffic Operations Manager

gwaldrop@dot.ga.gov