



October 2015 Letting Report

K. Joe Carpenter, Jr., P.E.
Director of P3/Program Delivery

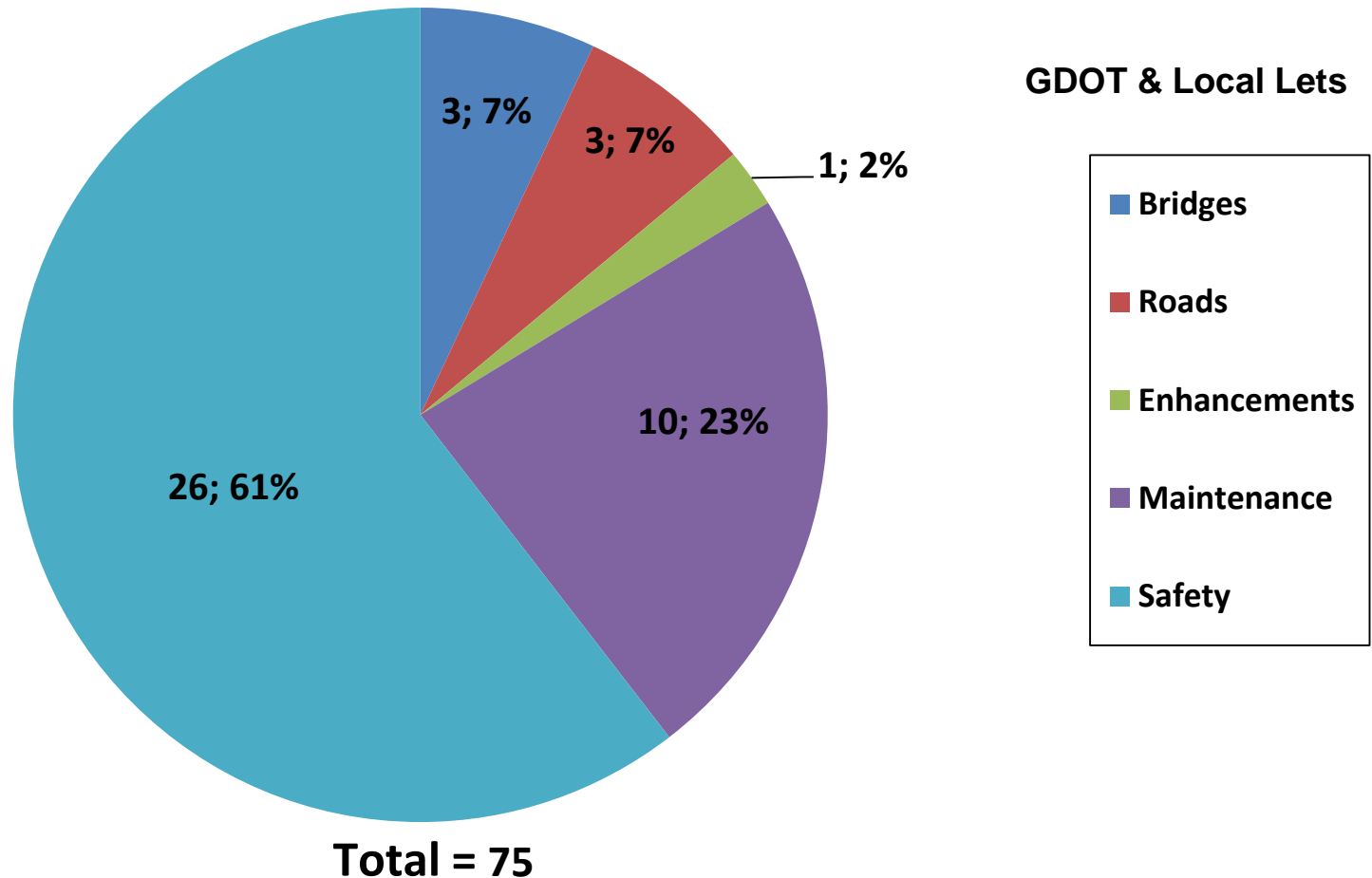
September 17, 2015



Fiscal Year 2016 Letting Report

Number of Projects Let in FY 2016

(Contractor Low Bid Award Data)



Does not include LMIG Projects

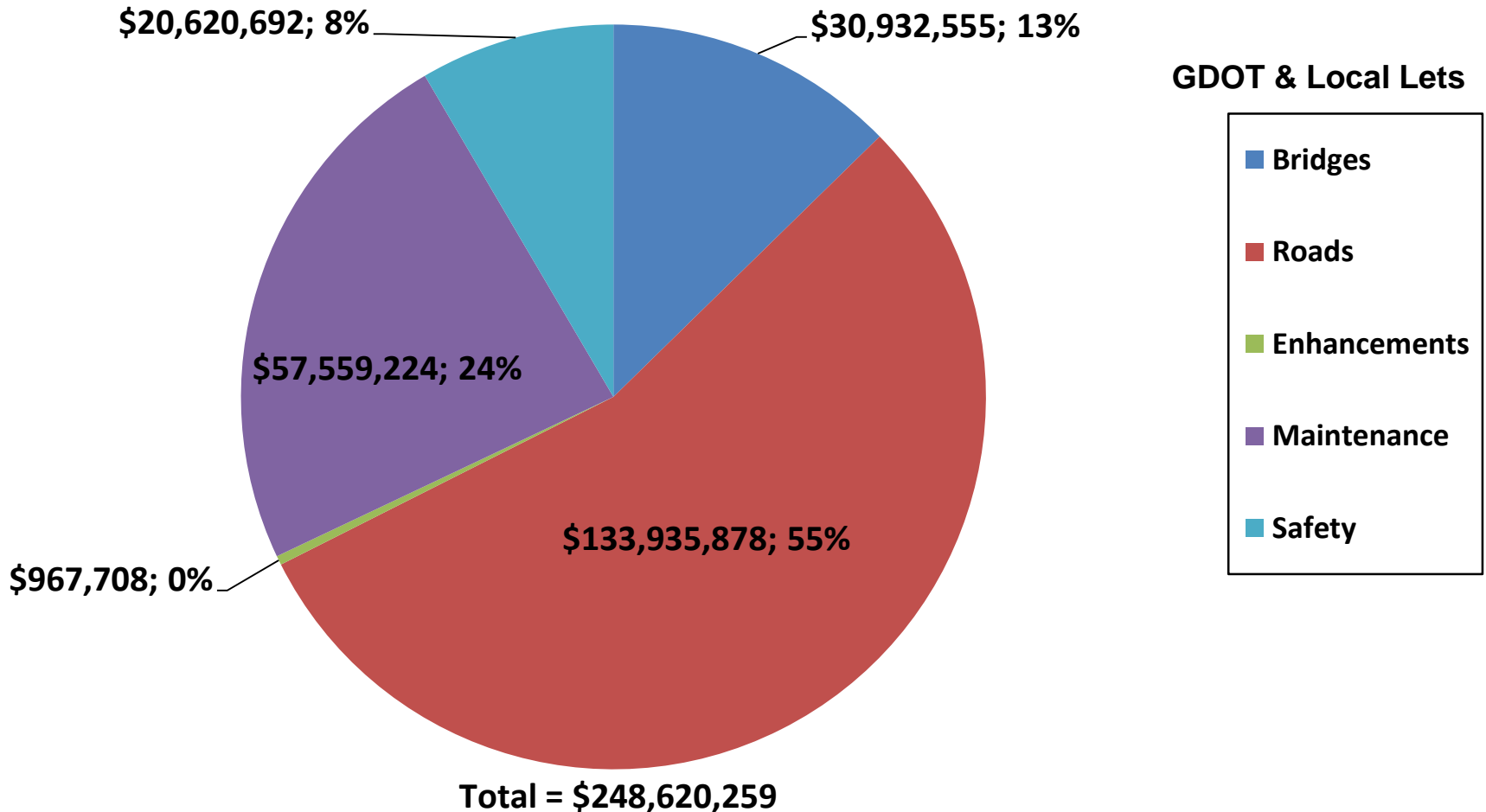
*As of September 14, 2015
Source Construction Bidding Administration*



Fiscal Year 2016 Letting Report

Dollar Amount of Projects Let in FY 2016

(Contractor Low Bid Award Data)



Does not include LMIG Projects

As of September 14, 2015
Source Construction Bidding Administration



August 2015 Letting Results

Summary	Presented to GDOT Board (Includes Adjustments)	Low Bid (Awarded to Contractor)	Low Bid w/Adjustments (Total Project Obligation)
GDOT Let (Project Count)	45	43	43
GDOT Let (Dollars)	\$173,014,184	\$136,847,381	\$145,184,448
Local Let (Project Count)	4	N/A Local Let	N/A Local Let
Local Let (Dollars)	\$4,299,022	N/A Local Let	N/A Local Let

*Low Bid Award Amount includes the Deferred and Awarded projects.
Does not include Engineering and Inspection, Utilities, Liquid AC, Incentives, LMIG and Rejected projects.



GDOT Let Projects

October 2015 Letting



GDOT Let Projects

October 2015 Letting

Project ID	Description	Primary County	Primary Work Type	Congressional District	Project Let By	Project Sponsor
M005112	I-95 SB & NB @ LITTLE SATILLA RIVER - BRIDGE REHAB	CAMDEN	Bridges	1	DOT	GDOT
0002923	SR 25 CONN/BAY STREET FROM I-516 TO THE BAY STREET VIADUCT	CHATHAM	Widening	1	DOT	Chatham County
0010553	CS 651/CROSSGATE RD FM SR 21 TO NS#734150L IN PORT WENTWORTH	CHATHAM	Resurface & Maintenance	1	DOT	GDOT
M005115	I-516 & SR 21 FROM CS 1074/MONTGOMERY STREET TO SR 26 CONN	CHATHAM	Resurface & Maintenance	1	DOT	GDOT
0007172**	SR 230 @ TURKEY CREEK S OF BYROMVILLE	DOOLY	Bridges	2	DOT	GDOT
311665-	I-75 @ SR 27 - WIDEN BRIDGE & RAMPS	DOOLY	Interchange	2	DOT	GDOT
0010602	BROAD STREET FROM CSX #636831U TO CS 551/2ND AVE SE	GRADY	TE-Bike/Ped Facility	2	LOC	Cairo
M004837	SR 166 FROM DOUGLAS COUNTY LINE TO SR 61	CARROLL	Resurface & Maintenance	3	DOT	GDOT
0010299	TYRONE PEDESTRIAN BRIDGE & GATEWAYS	FAYETTE	TE-Bike/Ped Facility	3	LOC	Tyrone
M004891	SR 219 FROM SR 14 CONN TO CS 718/SOUTH CHILTON AVE	TROUP	Resurface & Maintenance	3	DOT	GDOT
M004912	SR 236 FROM FULTON COUNTY LINE TO I-285	DEKALB	Resurface & Maintenance	4, 5, 6	DOT	GDOT
M004914	SR 42 FROM I-285 TO S OF CR 5218/KEY ROAD	DEKALB	Resurface & Maintenance	5	DOT	GDOT
M004932	SR 139 FROM CLAYTON COUNTY LINE TO SR 14/US 29	FULTON	Resurface & Maintenance	5	DOT	GDOT
0007313	SR 372 @ CRABAPPLE RD; INC NEW LOC & INTERSECTION IMPROVEMENT	FULTON	Intersection Improvement	6	DOT	Milton

****Note: Bridge Bond Project**



GDOT Let Projects

October 2015 Letting

Project ID	Description	Primary County	Primary Work Type	Congressional District	Project Let By	Project Sponsor
M004910	SR 120 FROM SR 9 TO CS 3143/BROOKHOLLOW TRAIL	FULTON	Resurface & Maintenance	6	DOT	GDOT
M004913	SR 9 FROM CS 9049/CHURCH STREET TO FORSYTH COUNTY LINE	FULTON	Resurface & Maintenance	6	DOT	GDOT
M004880	SR 13 FROM CR 3761/OLD PEACHTREE ROAD TO SR 20	GWINNETT	Resurface & Maintenance	7	DOT	GDOT
0000546	SR 133 FROM CR 256/OLD BERLIN ROAD TO CR 388/HAWTHORNE DRIVE	COLQUITT	Widening	8	DOT	GDOT
0010577	SR 37 FROM BAY STREET TO SR 125	BERRIEN	TE-Bike/Ped Facility	8	LOC	Ray City
M004893	SR 247 FROM 0.60 MI S OF BEAR BRANCH ROAD TO SR 96	HOUSTON	Resurface & Maintenance	8	DOT	GDOT
M005194	I-75 @ CR 785/OLD CLYATTVILLE RD - DECK REPLACEMENT & REHAB	LOWNDES	Bridges	8	DOT	GDOT
0008420	SR 38/US 84 @ CR 439/CLAY ROAD/CS 1271/HOLLYWOOD STREET	LOWNDES	Intersection Improvement	8	DOT	GDOT
0007054**	SR 19 @ CSX RR 2.8 MI SE OF DRY BRANCH	TWIGGS	Bridges	8	DOT	GDOT
0007030**	SR 9 @ ETOWAH RIVER	DAWSON	Bridges	9	DOT	GDOT
0010680	SR 51/CS 845/MAIN ST & CS 808/CHARLOTTE ST @ 2 LOCS IN LULA	HALL	TE-Bike/Ped Facility	9	LOC	Lula
M004996	SR 72 @ 1 LOC & SR 77 SPUR @ 1 LOC - SCOUR REPAIR & REHAB	HART	Bridges	9	DOT	GDOT
M004775	SR 75 ALT FROM SR 11 TO SR 75	WHITE	Resurface & Maintenance	9	DOT	GDOT
M004722	I-20 EB & WB @ RICHLAND CREEK - SCOUR REHAB	GREENE	Bridges	10	DOT	GDOT

****Note: Bridge Bond Project**



GDOT Let Projects

October 2015 Letting

Project ID	Description	Primary County	Primary Work Type	Congressional District	Project Let By	Project Sponsor
M004884	SR 8 FM S OF CS 1315/STANLEY COURT TO NE OF BARROW CO LINE	GWINNETT	Resurface & Maintenance	10, 7	DOT	GDOT
0007593	SIDEWALKS; LIGHTING & LANDSCAPING IN MONTICELLO	JASPER	Sidewalks	10	LOC	Monticello
0007040**	SR 43 @ LITTLE RIVER @ LINCOLN/MCDUFFIE COUNTY LINE	LINCOLN	Bridges	10	DOT	GDOT
222460-	SR 10:OGLETHORPE 13.7-15;15.3-16.2 & WILKES 0-1.5;5.5-7.0-TIA	OGLETHORPE /WILKES	Passing Lanes	10	DOT	Central Savannah River Area
M004873	SR 92 FROM CR 574/CHEROKEE TRAIL TO CS 674/CANTON ROAD	CHEROKEE	Resurface & Maintenance	11	DOT	GDOT
0009010	CR 4520/NORTH MAIN STREET FROM SR 92 TO BARTOW COUNTY LINE	COBB	TE-Bike/Ped Facility	11	LOC	Acworth
0011657	I-75 @ CS 4396/WADE GREEN RD - DIVERGING DIAMOND INTERCHANGE	COBB	Operational Improvement	11	LOC	GDOT
0010818	METTER DOWNTOWN STREETSCAPES @ 4 LOCS - PHASE III	CANDLER	TE-Bike/Ped Facility	12	LOC	Metter
0009135	SR 4/US 1 FROM VICTORY DRIVE TO RAILROAD CORRIDOR @ US 280	TOOMBS	TE-Bike/Ped Facility	12	LOC	Lyons
M004875	SR 139 FROM FULTON COUNTY LINE TO SR 5/SR 8	COBB	Resurface & Maintenance	13	DOT	GDOT
0009620	SR 225 @ CR 132/MT CARMEL CHURCH ROAD/MITCHELL BRIDGE ROAD	MURRAY	Roundabout	14	DOT	GDOT
610890-	I-75 INTERCHANGE @ CR 665/CARBONDALE ROAD; INC ROUNDABOUTS	WHITFIELD	Interchange	14	DOT	GDOT

****Note: Bridge Bond Project**



I-95 @ LITTLE SATILLA RIVER, Bridge Rehab Project in Camden County Congressional District 1



End
Project

Begin
Project

bing

Image courtesy of USGS Earthstar Geographics 200 © 2010 Microsoft Corporation

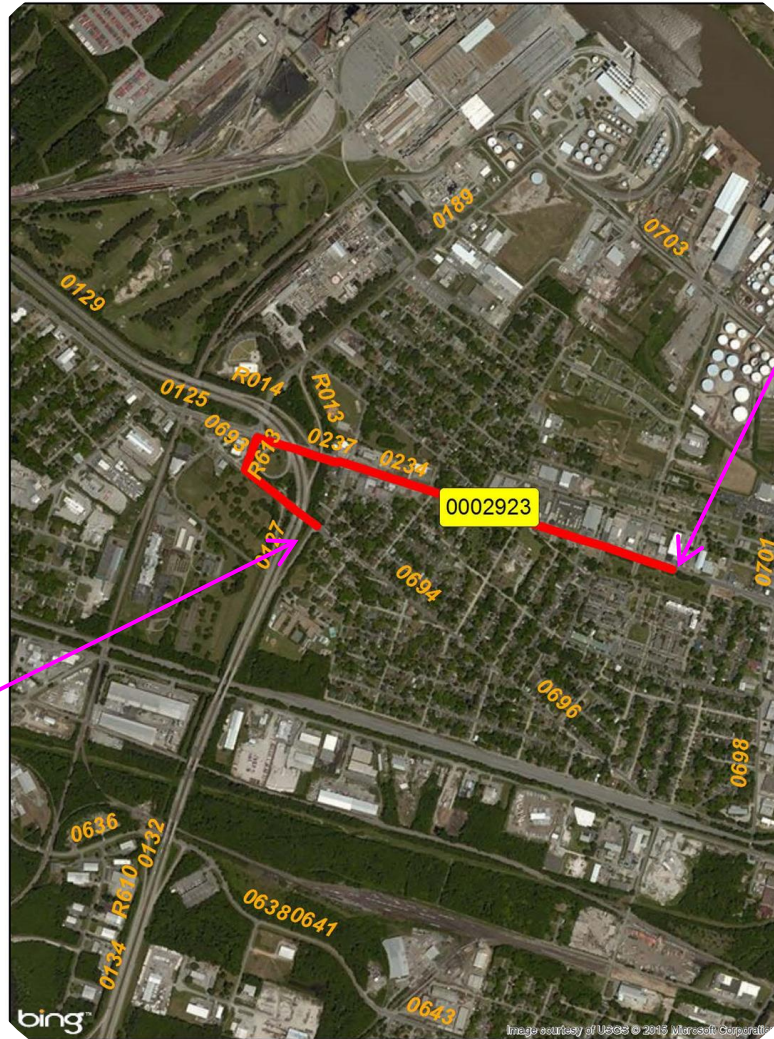


I-95 @ LITTLE SATILLA RIVER, Bridge Rehab Project in Camden County Congressional District 1 (continued)





SR 25 CONN/BAY STREET FROM I-516 TO THE BAY STREET VIADUCT , Widening Project in Chatham County Congressional District 1



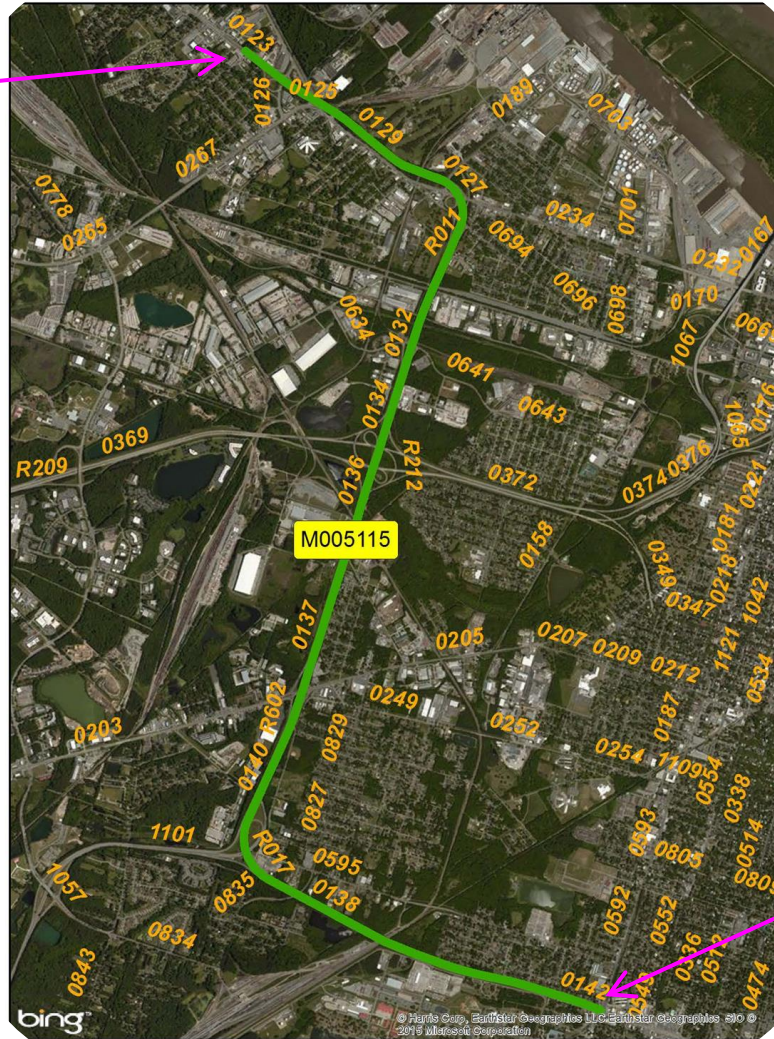
Begin Project

End Project



I-516 & SR 21 FROM CS 1074/MONTGOMERY STREET TO SR 26 CONN, Resurfacing Project in Chatham County Congressional District 1

End Project



Begin Project

I-75 @ SR 27,

Bridge and Ramp Widening Project in Dooly County Congressional District 2



End Project

Begin Project



I-75 @ SR 27, Bridge and Ramp Widening Project in Dooly County Congressional District 2 (continued)





SR 133 from CR 256 to CR 388, Bridge and Ramp Widening Project in Colquitt County Congressional District 8

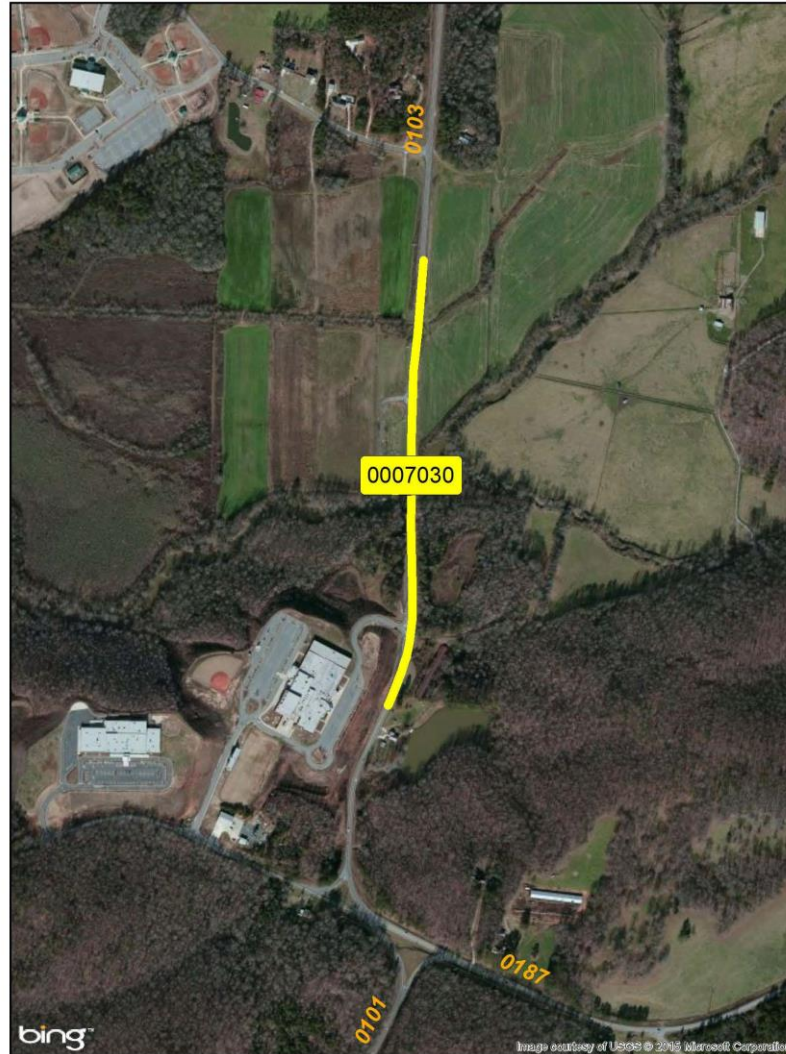


SR 133 from CR 256 to CR 388, Bridge and Ramp Widening Project in Colquitt County Congressional District 8 (continued)





SR 9 over the Etowah River, Bridge Replacement in Dawson County Congressional District 9

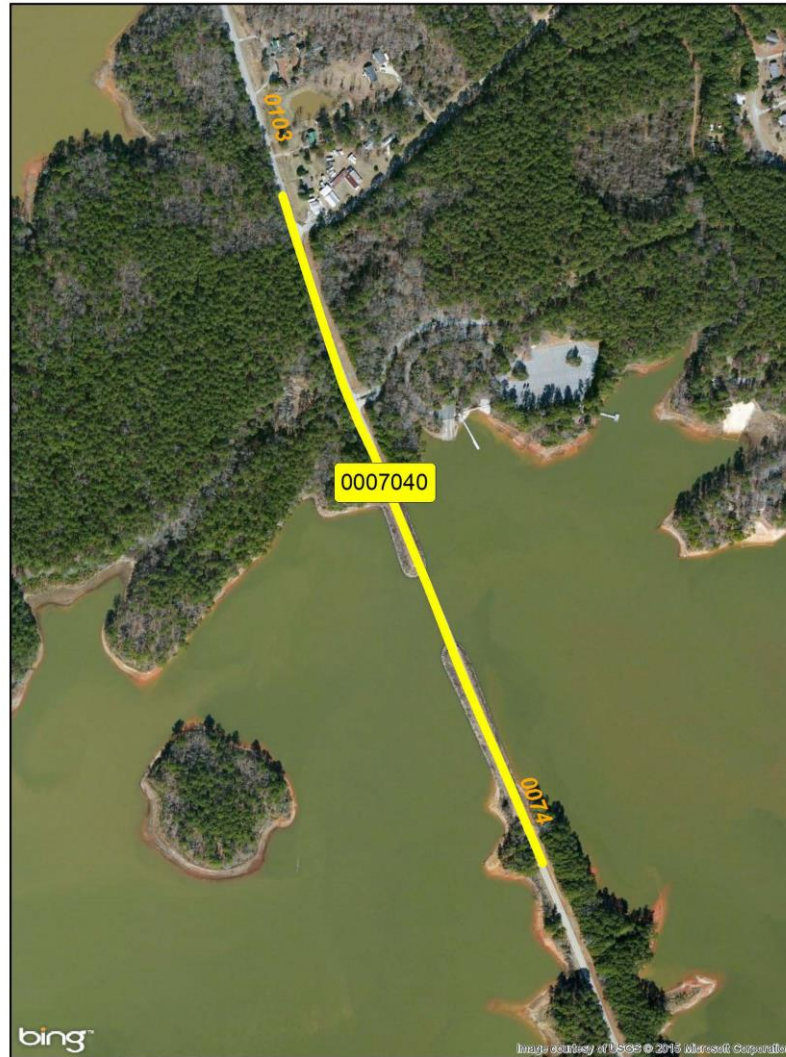


SR 9 over the Etowah River, Bridge Replacement in Dawson County Congressional District 9 (continued)





SR 43 over the Little River, Bridge Replacement in Lincoln County Congressional District 10



SR 43 over the Little River, Bridge Replacement in Lincoln County Congressional District 10 (continued)





SR 10: OGLETHORPE 13.7-15; 15.3-16.2 & WILKES 0-1.5; 5.5-7.0 - TIA, Passing Lanes in Oglethorpe & Wilkes Counties Congressional District 10





I-75 Interchange at CR 665/Carbondale Road, Interchange Project in Whitfield County Congressional District 14



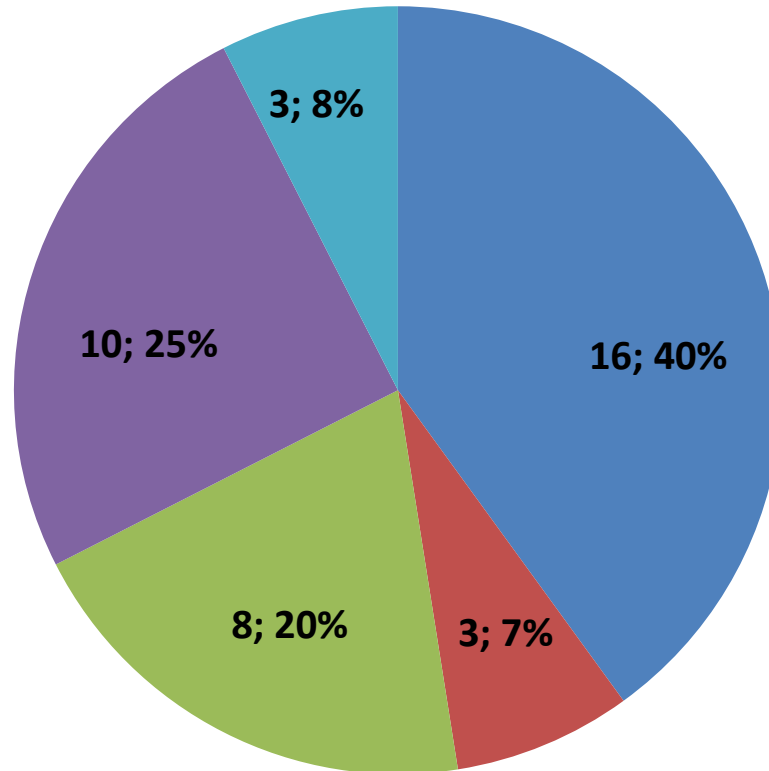
I-75 Interchange at CR 665/Carbondale Road, Interchange Project in Whitfield County Congressional District 14 (continued)



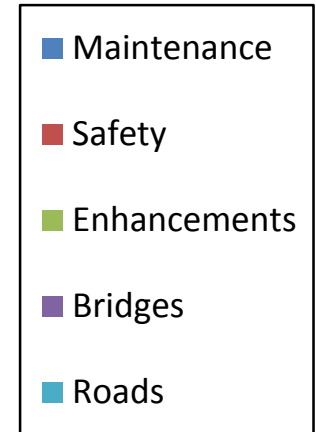


Fiscal Year 2016 Letting Report

Number of Projects October 2015 Letting



GDOT & Local Lets



Total = 40

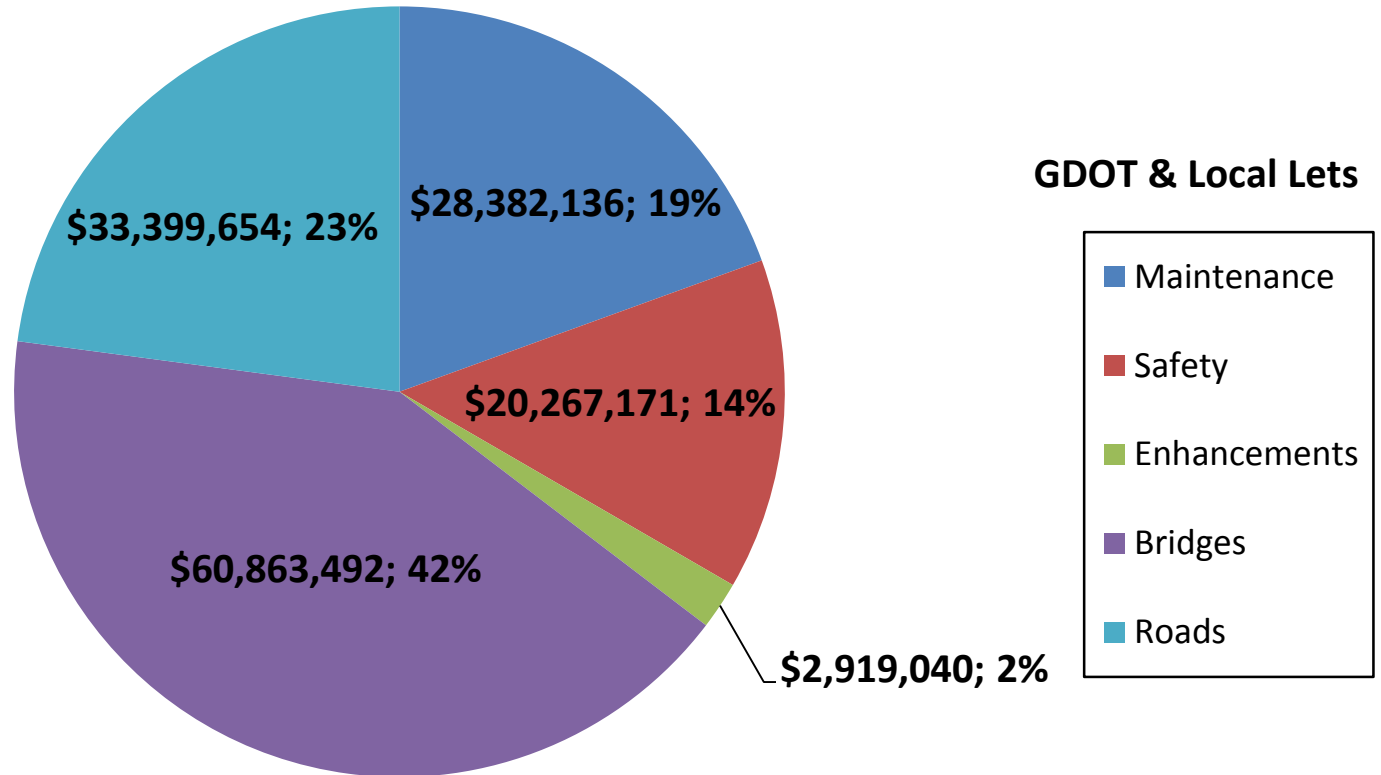
Does not include LMIG Projects

As of August 12, 2015
Source TPro – Chief Approved FY '16 Letting List



Fiscal Year 2016 Letting Report

Dollar Amount of Projects October 2015 Letting



Total = \$145,831,494

Does not include LMIG Projects

*As of August 12, 2015
Source TPro – Chief Approved FY '16 Letting List*



Proposed Revisions To The Construction Work Program

Jay Roberts
Director of Planning

September 17, 2015



September 2015 CWP Revision

Board Revisions:

1. P.I. No. 0013713, Brantley County, SR 520/US 82 at Big Creek 3 miles west of Hoboken – Bridge Replacement in Congressional District 1
Action: Addition to the Program
2. P.I. No. 0013719, Long County, SR 38/US 84 at Doctors Creek 3 miles east of Ludowici –Bridge Replacement in Congressional District 1
Action: Addition to the Program
3. P.I. No. 0013738, Camden County, SR 25 at White Oak Creek 5 miles north of Woodbine–Bridge Replacement in Congressional District 1
Action: Addition to the Program
4. P.I. No. 0013739, Camden County, SR 25 at Little Waverly Creek and Waverly Creek north of Woodbine – Bridge Replacement in Congressional District 1
Action: Addition to the Program
5. P.I. No. 0013741, Chatham County, SR 25/US 17 at Savannah River in Port Wentworth – Bridge Replacement in Congressional District 1
Action: Addition to the Program
6. P.I. No. 0013742, Chatham County, SR 25/US 17 at Middle River in Port Wentworth – Bridge Replacement in Congressional District 1
Action: Addition to the Program



September 2015 CWP Revision

Board Revisions:

7. P.I. No. 0013745, Glynn County, SR 25 Spur east at Mackay River 3 miles east of Brunswick – Bridge Replacement in Congressional District 1
Action: Addition to the Program
8. P.I. No. 0013750, Liberty County, SR 119 at Taylors Creek 3 miles NW of Hinesville – Bridge Replacement in Congressional District 1
Action: Addition to the Program
9. P.I. No. 0013712, Bibb County, SR 11/SR 49/US 41 at NS #734080Y 1.4 miles south of Macon – Bridge Replacement in Congressional District 2
Action: Addition to the Program
10. P.I. No. 0013737, Calhoun County, SR 37 at Pachitla Creek and Overflow 1.2 miles west of Dickey – Bridge Replacement in Congressional District 2
Action: Addition to the Program
11. P.I. No. 0013743, Chattahoochee County, SR 520/US 280 EB and WB at Bagley Creek 2 miles SE of Cusseta – Bridge Replacement in Congressional District 2
Action: Addition to the Program
12. P.I. No. 0013715, Sumter County, SR 377 at HOG #632346H in Americus–Bridge Replacement in Congressional District 2
Action: Addition to the Program



September 2015 CWP Revision

Board Revisions:

13. P.I. No. 0013717, Coweta County, SR 54 at Bear Creek 3.5 miles SE of Moreland – Bridge Replacement in Congressional District 3
Action: Addition to the Program
14. P.I. No. 0013740, Carroll County, SR 166 at Big Indian Creek 1.9 miles west of Bowden –Bridge Replacement in Congressional District 3
Action: Addition to the Program
15. P.I. No. 0013751, Newton County, SR 81 at Dried Indian Creek in Covington–Bridge Replacement in Congressional District 4
Action: Addition to the Program
16. P.I. No. 0013711, Berrien, Coffee, and Irwin Counties, SR 158 @ Willacoochee River 7.1 miles NE of Alapha – Bridge Replacement in Congressional Districts 8 and 12
Action: Addition to the Program
17. P.I. No. 0013714, Brooks County, SR 76/SR 333 at CS 735/Bay Street and CSX #636942L in Quitman – Bridge Replacement in Congressional District 8
Action: Addition to the Program
18. P.I. No. 0013732, Irwin and Tift Counties, SR 35 FROM Ferry Lake Road/Tift to Stump Creek/Irwin at 3 locations – Bridge Replacement in Congressional District 8
Action: Addition to the Program



September 2015 CWP Revision

Board Revisions:

19. P.I. No. 0013744, Colquitt County, SR 111 at Little Creek Tributary 5 miles SW of Moultrie – Bridge Replacement in Congressional District 8
Action: Addition to the Program
20. P.I. No. 0013716, Clarke County, SR 10 Loop EB and WB at SR 8/US 29 – Bridge Replacement in Congressional District 9
Action: Addition to the Program
21. P.I. No. 0013746, Habersham County, SR 385 at Hazel Creek in Demorest – Bridge Replacement in Congressional District 9
Action: Addition to the Program
22. P.I. No. 0013747, Hart County, SR 8 at Beaverdam Creek 1.7 miles east of Royston – Bridge Replacement in Congressional District 9
Action: Addition to the Program
23. P.I. No. 0013715, Clarke County, SR 10 Loop EB and WB at Middle Oconee River 5 miles east of Bogart – Bridge Replacement in Congressional District 10
Action: Addition to the Program
24. P.I. No. 0013735, Baldwin County, SR 22 at Little Fishing Creek in Milledgeville – Bridge Replacement in Congressional District 10
Action: Addition to the Program



September 2015 CWP Revision

Board Revisions:

25. P.I. No. 0013748, Emanuel and Johnson Counties, SR 26 at Ochoopee River 1.1 miles east of Adrian – Bridge Replacement in Congressional Districts 10 and 12.
Action: Addition to the Program

26. P.I. No. 0013736, Burke County, SR 56 at Brack Creek 5.8 miles NE of Midville – Bridge Replacement in Congressional District 12
Action: Addition to the Program

27. P.I. No. 0013749, Laurens County, SR 29 at Pughes Creek 7 miles SE of East Dublin – Bridge Replacement in Congressional District 12
Action: Addition to the Program

28. P.I. No. 0013718, Floyd County, SR 1/SR 20/US 27 at the Etowa River and NS #719103R in Rome– Bridge Replacement in Congressional District 14
Action: Addition to the Program



October 2015 CWP Revision

Board Revisions:

1. P.I. No. 0013822, Clinch County, SR 122/SR 168 @ Camp Creek 15 MI NW OF Homerville– Bridge Replacement in Congressional District 1
Action: Addition to the Program
2. P.I. No. 0013828, Seminole County, SR 45 @ Dry Creek– Bridge Replacement in Congressional District 2
Action: Addition to the Program
3. P.I. No. 0013814, Taylor County SR 128 @ Patsiliga Creek & Overflow N OF Reynolds– Bridge Replacement in Congressional District 2
Action: Addition to the Program
4. P.I. No. 0013810, Fulton County, SR 14 @ Abandoned CSX Railroad IN West Atlanta– Bridge Replacement in Congressional District 5
Action: Addition to the Program
5. P.I. No. 721000-, Fulton and Gwinnett County, SR 120 FM Parsons RD/Fulton TO Peachtree IND BLVD/Gwinnett– Widening in Congressional District 6 and 7
Action: Change in Description



October 2015 CWP Revision

Board Revisions:

6. P.I. No. 0013818, Atkinson County, SR 64 @ Satilla River 6 MI E OF Pearson– Bridge Replacement in Congressional District 8
Action: Addition to the Program
7. P.I. No. 0013817, Wilkinson County, SR 112 @ Commissioners Creek –Bridge Replacement in Congressional District 8
Action: Addition to the Program
8. P.I. No. 0013801, Brooks County, SR 122 @ Mule Creek 2 MI E OF Pavo–Bridge Replacement in Congressional District 8
Action: Addition to the Program
9. P.I. No. 0013802, Brooks County, SR 122 @ Brice Pond Trib & @ Okapilco Creek– Bridge Replacement in Congressional District 8
Action: Addition to the Program
10. P.I. No. 0013823, Dodge County, SR 165 @ Sugar Creek 1 MI SW OF Chauncy– Bridge Replacement in Congressional District 8
Action: Addition to the Program



October 2015 CWP Revision

Board Revisions:

11. P.I. No. 0013824, Dodge County, SR 230 @ Big Branch 8.3 MI NW OF Rhine– Bridge Replacement in Congressional District 8
Action: Addition to the Program
12. P.I. No. 0013807, Dawson County, SR 183 @ Cochran Creek 6 MI NW OF Dawsonville– Bridge Replacement in Congressional District 9
Action: Addition to the Program
13. P.I. No. 0013811, Hart County, SR 77 SPUR @ Little Coldwater Creek 6.5 MI SE of Hartwell – Bridge Replacement in Congressional District 9
Action: Addition to the Program
14. P.I. No. 0013812, Hart County, SR 77 Spur @ Cedar Creek 7.5 MI SE OF Hartwell– Bridge Replacement in Congressional District 9
Action: Addition to the Program
15. P.I. No. 0013813, Jasper and Monroe County, SR 83 @ Lee Creek & @ Ocmulgee River 11 MI NE OF Forsyth –Bridge Replacement in Congressional District 10 and 8
Action: Addition to the Program



October 2015 CWP Revision

Board Revisions:

16. P.I. No. 0013819, Barrow and Jackson County, SR 82 @ Middle Oconee River 5 MI NE OF Statham – Bridge Replacement in Congressional District 10 and 9
Action: Addition to the Program
17. P.I. No. 0013806, Clarke County, SR 10/US 78 @ North Oconee River–Bridge Replacement in Congressional District 10
Action: Addition to the Program
18. P.I. No. 322440-, Butts County, SR 36 FROM CR 296/Brownlee Road to N OF CR 289/Stark Road– One Way Pair in Congressional District 10
Action: Deletion to the Program
19. P.I. No. 0013815, Warren County, SR 16 @ Rocky Comfort Creek 2.5 MI SW OF Warrenton –Bridge Replacement in Congressional District 10
Action: Addition to the Program
20. P.I. No. 0013803, Bulloch County, SR 26 @ Caney Branch 13 MI SE OF Brooklet– Bridge Replacement in Congressional District 12
Action: Addition to the Program



October 2015 CWP Revision

Board Revisions:

21. P.I. No. 0013804, Bulloch and Effingham County, SR 119 @ Ogeechee River & Overflow 13.6 MI SE OF Brooklet– Bridge Replacement in Congressional District 12
Action: Addition to the Program
22. P.I. No. 0013820, Burke County, SR 23 @ Brier Creek Overflow 2.5 MI N OF Sardis– Bridge Replacement in Congressional District 12
Action: Addition to the Program
23. P.I. No. 0013825, Evans County, SR 169 @ Bull Creek 4.5 MI SW OF Claxton –Bridge Replacement in Congressional District 12
Action: Addition to the Program
24. P.I. No. 0013826, Evans County, SR 169 @ Cedar Creek 4 MI NW OF Claxton –Bridge Replacement in Congressional District 12
Action: Addition to the Program
25. P.I. No. 0013809, Fulton County, SR 14/US 29 @ CSX #638610Y 2.6 MI NE OF Union City– Bridge Replacement in Congressional District 13
Action: Addition to the Program



October 2015 CWP Revision

Board Revisions:

- 26. P.I. No. 0013827, Pickens County, SR 136 @ Talking Rock Creek 3 MI N OF Jasper –Bridge Replacement in Congressional District 14 and 9
Action: Addition to the Program

- 27. P.I. No. 0013821, Chattooga County, SR 100 @ Clarks Creek 3.5 MI SE OF Lyerly–Bridge Replacement in Congressional District 14
Action: Addition to the Program

- 28. P.I. No. 0013816, Whitfield County, SR 201 @ Tanyard Creek in NE Tunnel Hill –Bridge Replacement in Congressional District 14
Action: Addition to the Program