



May 2016 Letting Report

K. Joe Carpenter, Jr., P.E.
Director of P3/Program Delivery

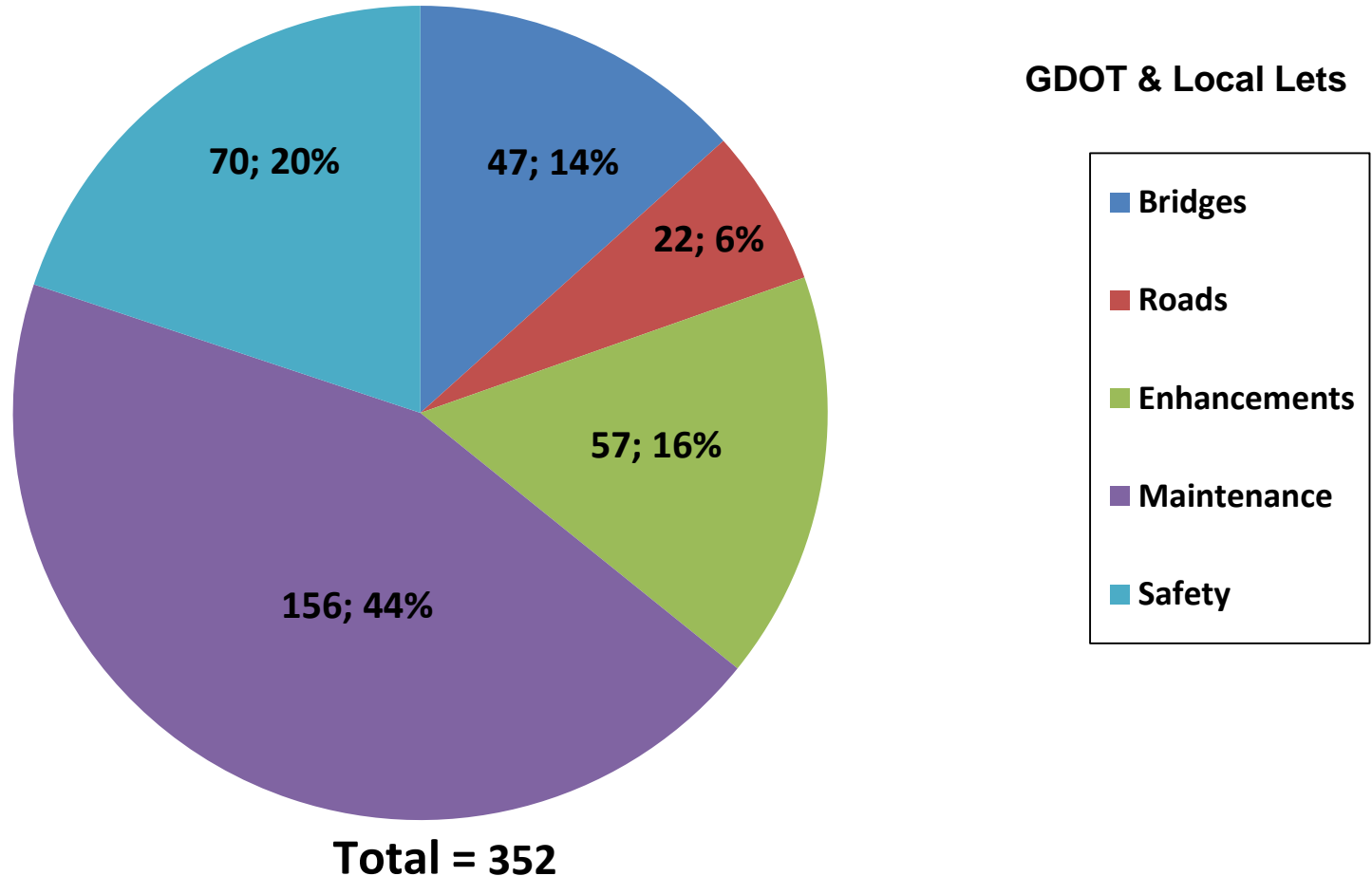
April 21, 2016



Fiscal Year 2016 Letting Report

Number of Projects Let in FY 2016

(Contractor Low Bid Award Data)



Does not include LMIG Projects

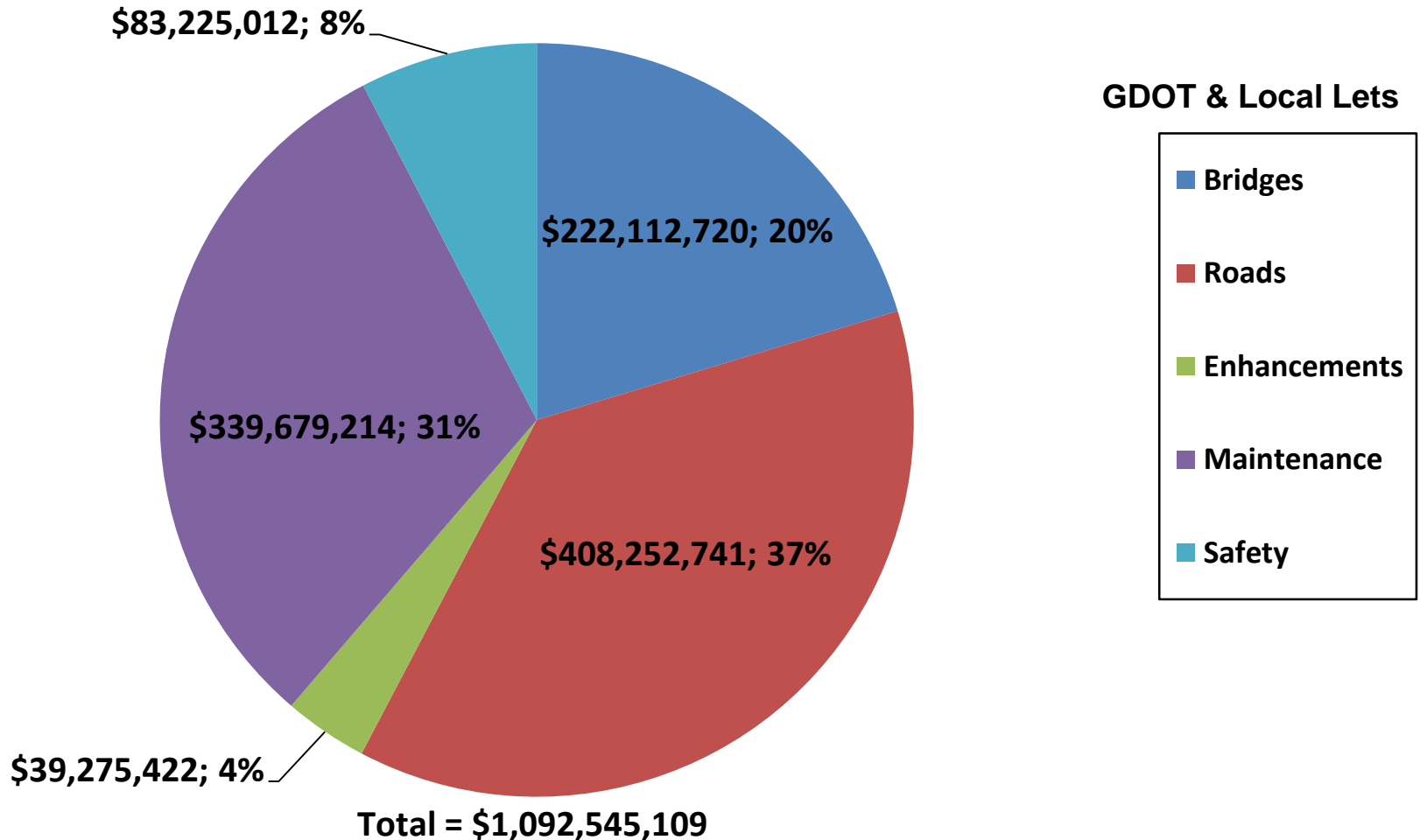
As of April 14, 2016
Source Construction Bidding Administration



Fiscal Year 2016 Letting Report

Dollar Amount of Projects Let in FY 2016

(Contractor Low Bid Award Data)



Does not include LMIG Projects

As of April 14, 2016
Source Construction Bidding Administration



March 2016 Letting Results

Summary	Presented to GDOT Board (Includes Adjustments)	Low Bid (Awarded to Contractor)	Low Bid w/Adjustments (Total Project Obligation)
GDOT Let (Project Count)	46	45	45
GDOT Let (Dollars)	\$190,848,951	\$148,101,257	\$156,402,595
Local Let (Project Count)	5	N/A Local Let	N/A Local Let
Local Let (Dollars)	\$4,339,476	N/A Local Let	N/A Local Let

*Low Bid Award Amount includes the Deferred and Awarded projects.
Does not include Engineering and Inspection, Utilities, Liquid AC, Incentives, LMIG and Rejected projects.



GDOT Let Projects

May 2016 Letting



GDOT Let Projects

May 2016 Letting

Project ID	Description	Primary County	Primary Work Type	Congressional District	Project Let By	Project Sponsor	2014 AADT
M004190	I-16 @ 17 LOCS BETWEEN CANDLER COUNTY & CHATHAM COUNTY	APPLING	Signing	001, 012	DOT	GDOT	various
0007161	SR 32 @ LITTLE SATILLA RIVER OVERFLOW 6 MI SE OF PATTERSON	BRANTLEY	Bridges	001	DOT	GDOT	1410
0013783	OFF-SYSTEM SAFETY IMPROVEMENTS @ 9 LOCS IN BRANTLEY COUNTY	BRANTLEY	Signing	001	DOT	GDOT	various
M005054	SR 40 FROM CHARLTON COUNTY LINE TO E OF CS 556/HENRIETTA ST	CAMDEN	Resurface & Maintenance	001	DOT	GDOT	8570
0013781	OFF-SYSTEM SAFETY IMPROVEMENTS @ 3 LOCS IN CLINCH COUNTY	CLINCH	Signing	001	DOT	GDOT	various
M005029	SR 520 FROM SR 25 TO CR 840/JEKYLL ISLAND ROAD	GLYNN	Resurface & Maintenance	001	DOT	GDOT	4020
0010595	CS 625/CENTRAL AVE WEST @ BLACKSHEAR TRAIN DEPOT	PIERCE	TE-Scenic Hwy/Welcome Ctr	001	LOC	Blackshear	420
0013780	OFF-SYSTEM SAFETY IMPROVEMENTS @ 5 LOCS IN WARE COUNTY	WARE	Signing	001	DOT	GDOT	various
0013790	OFF-SYSTEM SAFETY IMPROVEMENTS @ 25 LOCS IN CRISP COUNTY	CRISP	Signing	002	DOT	GDOT	various
M005007	SR 234 FROM SR 520BU TO CS 1333/INDUSTRY AVE	DOUGHERTY	Resurface & Maintenance	002	DOT	GDOT	14,100 - 34,710
M005035	SR 38 FM E OF UPPER HAWTHORNE TRAIL TO E OF PIERCE CHAPEL RD	GRADY	Resurface & Maintenance	002	DOT	GDOT	5,530 - 17,700
M005271	SR 38 CONN FROM SR 93 TO SR 38/US 84	GRADY	Resurface & Maintenance	002	DOT	GDOT	5,990 - 8,080

****Note: Bridge Bond Project**



GDOT Let Projects

May 2016 Letting

Project ID	Description	Primary County	Primary Work Type	Congressional District	Project Let By	Project Sponsor	2014 AADT
0009111	MILFORD STREET/PHILLIPSBURG ROAD SIDEWALKS/WALKING LANE	MILLER	TE-Bike/Ped Facility	002	LOC	Colquitt	740 - 2,070
M005221	SR 37 FROM BAKER COUNTY LINE TO CAMILLA CITY LIMITS	MITCHELL	Resurface & Maintenance	002	DOT	GDOT	3,230 - 3,510
M005255	SR 37 FM .25 MI N OF CAMILLA CITY LIMITS TO COLQUITT CO LINE	MITCHELL	Resurface & Maintenance	002	DOT	GDOT	1,360 - 2,740
M005354	SR 37 CONN FROM SR 37 TO SR 112	MITCHELL	Resurface & Maintenance	002	DOT	GDOT	4780
0007633	SOUTH LUMPKIN ROAD TRAIL IN COLUMBUS - PHASE II	MUSCOGEE	Multi-use Trail	002	LOC	Columbus	N/A
350730-	SR 982/TALBOTTON RD FROM 7TH AVE TO WOODRUFF RD/HILTON AVE	MUSCOGEE	Widening	002, 003	DOT	GDOT	10400
M004961	SR 49 FROM SR 7 TO 0.15 MI N OF CR 278/ALEXANDER WAY	PEACH	Resurface & Maintenance	002	DOT	GDOT	10,100 - 15,200
0013866	OFF-SYSTEM SAFETY IMPROVEMENTS @ 9 CR LOCS IN PEACH COUNTY	PEACH	Signing	002	DOT	GDOT	various
0012623	CR 875/SR 85 CONN; CR 359/BROOKS ROAD & CR 364/EBENEZER ROAD	FAYETTE	Resurface & Maintenance	003	LOC	Fayette County	1,000-5,000
0013867	OFF-SYSTEM SAFETY IMPROVEMENTS @ 9 CR LOCS IN HARRIS COUNTY	HARRIS	Signing	003	DOT	GDOT	various
M004894	SR 81 FROM SR 20 TO NEWTON COUNTY LINE	HENRY	Resurface & Maintenance	003, 010	DOT	GDOT	4,440 - 16,900
0013865	OFF-SYSTEM SAFETY IMPROVEMENTS @ 14 CR LOCS IN UPSON COUNTY	UPSON	Signing	003	DOT	GDOT	various

****Note: Bridge Bond Project**



GDOT Let Projects

May 2016 Letting

Project ID	Description	Primary County	Primary Work Type	Congressional District	Project Let By	Project Sponsor	2014 AADT
M005376	I-75 @ 1 LOC & I-285 @ 5 LOCS - BRIDGE REHAB	FULTON	Bridges	004, 005, 006, 011	DOT	GDOT	140,000 - 215,000
0012613	CR 5149/KEY RD & CR 78/CONSTITUTION RD @ ENTRENCHMENT CREEK	DEKALB	Bridges	005	LOC	Dekalb County	1,010 - 5,540
0010329	SR 3 FM CS 8028/SOUTH CENTRAL AVE TO CS 3118/NORTH AVE - LCI	FULTON	Bicycle/Ped. Facility	005	LOC	Hapeville	5500
M005400	I-75/I-85 FROM SR 54 TO BROOKWOOD INTERCHANGE	FULTON	Resurface & Maintenance	005	DOT	GDOT	225,000 - 342,000
0007310	SR 120 FM CS 65/JONES BRIDGE RD TO CS 79/PARSON RD-PHASE II	FULTON	Multi-use Trail	006	LOC	Johns Creek	11500
0010858	SR 400 SB @ SR 140 - RAMP IMPROVEMENTS	FULTON	Operational Improvement	006	DOT	GDOT	40,900 - 66,500
0010242	CS 1178/SOUTH LEE ST FM SR 13 TO CS 1086/WEST MORENO STREET	GWINNETT	Bicycle/Ped. Facility	007	LOC	Buford	7140
0013789	OFF-SYSTEM SAFETY IMPROVEMENTS @ 12 LOCS IN DODGE COUNTY	DODGE	Signing	008	DOT	GDOT	various
M005426	SR 38BU FROM SR 35/SR 38 TO SR 3/SR 38 IN THOMASVILLE	THOMAS	Resurface & Maintenance	008	DOT	GDOT	7,460 - 13,600
0013845	OFF-SYSTEM SAFETY IMPROVEMENTS @ 8 LOCS IN WILCOX COUNTY	WILCOX	Signing	008	DOT	GDOT	various
0007169	SR 136 @ ETOWAH RIVER 5.7 MI EAST OF DAWSONVILLE	DAWSON	Bridges	009	DOT	GDOT	810
0010691	LAVONIA DOWNTOWN STREETScape ENHANCEMENT @ 5 LOCS - PHASE II	FRANKLIN	TE-Bike/Ped Facility	009	LOC	Lavonia	various

****Note: Bridge Bond Project**



GDOT Let Projects

May 2016 Letting

Project ID	Description	Primary County	Primary Work Type	Congressional District	Project Let By	Project Sponsor	2014 AADT
0010693	CS 879/LEVEL GROVE RD FM CS 878/IRVIN ST TO SR 15/US 411 BYP	HABERSHAM	TE-Bike/Ped Facility	009	LOC	Cornelia	8050
M005126	SR 105 FROM SR 15 TO 0.03 MI W OF SR 365	HABERSHAM	Resurface & Maintenance	009	DOT	GDOT	4,260 - 10,300
M005282	SR 98 FROM JACKSON COUNTY LINE TO SR 8	MADISON	Resurface & Maintenance	009	DOT	GDOT	4,410 - 5,600
M005179	SR 75 FROM CR 88/ASBESTOS ROAD TO SR 17	WHITE	Resurface & Maintenance	009	DOT	GDOT	7,480 - 6,350
0007561	BIKE TRAIL IN ATHENS-CLARKE COUNTY	CLARKE	Bicycle/Ped. Facility	010	LOC	Athens/Clarke County	640
0007637	NORTH OCONEE RIVER GREENWAY ENHANCEMENT IN ATHENS-CLARKE CO	CLARKE	Multi-use Trail	010	LOC	Athens/Clarke County	N/A
0010411	SR 16 @ LITTLE SHOULDERBONE CREEK 8.6 MI NW OF SPARTA	HANCOCK	Bridges	010	DOT	GDOT	1,040 - 1,200
0013786	OFF-SYSTEM SAFETY IMPROVEMENTS @ 7 LOCS IN MCDUFFIE COUNTY	MCDUFFIE	Signing	010	DOT	GDOT	various
0013785	OFF-SYSTEM SAFETY IMPROVEMENTS @ 5 LOCS IN MORGAN COUNTY	MORGAN	Signing	010	DOT	GDOT	various
0007049**	SR 36 @ YELLOW RIVER 14 MI S OF COVINGTON	NEWTON	Bridges	010	DOT	GDOT	3300
0013873	OFF-SYSTEM SAFETY IMPROVEMENTS @ 29 LOCS IN OCONEE COUNTY	OCONEE	Signing	010	DOT	GDOT	various
M005178	SR 24 FM MORGAN COUNTY TO 0.10 MI N OF CR 107/THOMAS FARM RD	OCONEE	Resurface & Maintenance	010	DOT	GDOT	6,270 - 11400

****Note: Bridge Bond Project**



GDOT Let Projects

May 2016 Letting

Project ID	Description	Primary County	Primary Work Type	Congressional District	Project Let By	Project Sponsor	2014 AADT
0013784	OFF-SYSTEM SAFETY IMPROVEMENTS @ 9 LOCS IN OGLETHORPE COUNTY	OGLETHORPE	Signing	010	DOT	GDOT	various
0013320	CR 384/BARTOW-CARVER RD FM GLADE RD TO BARTOW-CARVER PARK	BARTOW	Pavement Rehab	011	LOC	Bartow County	N/A
M005366	I-75 @ 14 LOCS IN BARTOW & GORDON - BRIDGE PRESERVATION	BARTOW	Bridges	011, 014	DOT	GDOT	60,800 - 96,100
M005307	I-75 SB & NB @ LAKE ALLATOONA - BRIDGE REHAB	BARTOW	Bridges	011	DOT	GDOT	96100
M005381	BRIDGE RP US 41/SR 3 OVER CSX RR/SR 293/CASSVILLE RD EMERSON	BARTOW	Bridges	011	DOT	GDOT	430 - 2,670
M005350	I-575 @ 11 LOCS IN CHEROKEE COUNTY - BRIDGE PRESERVATION	CHEROKEE	Bridges	011	DOT	GDOT	71,280 - 82,200
0012606	SR 5 @ SR 120 ALT	COBB	Intersection Improvement	011	LOC	Marietta	9,360 - 28,200
0012754	SR 3 @ CR 8/CEDARCREST ROAD/AWTREY CHURCH ROAD	COBB	Intersection Improvement	011	LOC	Cobb County	21,900 - 34,900
M004598	SR 26/SR 67 FROM MILL CREEK TO CS 619/NORTH COLLEGE STREET	BULLOCH	Resurface & Maintenance	012	DOT	GDOT	11600
M005079	SR 24 FROM SR 26 TO CR 445/CLITO ROAD	BULLOCH	Resurface & Maintenance	012	DOT	GDOT	4400
0010723	JESTERS CREEK TRAIL ENHANCEMENT	CLAYTON	TE-Bike/Ped Facility	013	LOC	Clayton County	n/a
751810-	CR 1337/FLINT RIVER RD FM GLENWOOD DR TO KENDRICK RD - GRTA	CLAYTON	Widening	013	LOC	Clayton County	16400

****Note: Bridge Bond Project**



GDOT Let Projects

May 2016 Letting

Project ID	Description	Primary County	Primary Work Type	Congressional District	Project Let By	Project Sponsor	2014 AADT
M005443	SR 232 FROM E OF SR 383 TO S OF SR 104	COLUMBIA	Resurface & Maintenance	012	DOT	GDOT	18700
0011694	WOLF CREEK TRAIL	FULTON	TE-Bike/Ped Facility	013	LOC	Fulton County	n/a
0013787	OFF-SYSTEM SAFETY IMPROVEMENTS @ 6 LOCS IN LAURENS COUNTY	LAURENS	Signing	012	DOT	GDOT	various
M004909	SR 2 FROM SR 61 TO 0.50 MI S OF CR 166/DEWBERRY CHURCH RD	MURRAY	Resurface & Maintenance	014	DOT	GDOT	2,450 - 4,496
M005541	I-20 FROM COLUMBIA COUNTY LINE TO SOUTH CAROLINA STATE LINE	RICHMOND	Pavement Markings	012	DOT	GDOT	65600
M004906	SR 71 FM N OF CR 567/ROLAND HILLS RD TO N OF CS 274/WOLFE ST	WHITFIELD	Resurface & Maintenance	014	DOT	GDOT	3,650 - 13,300

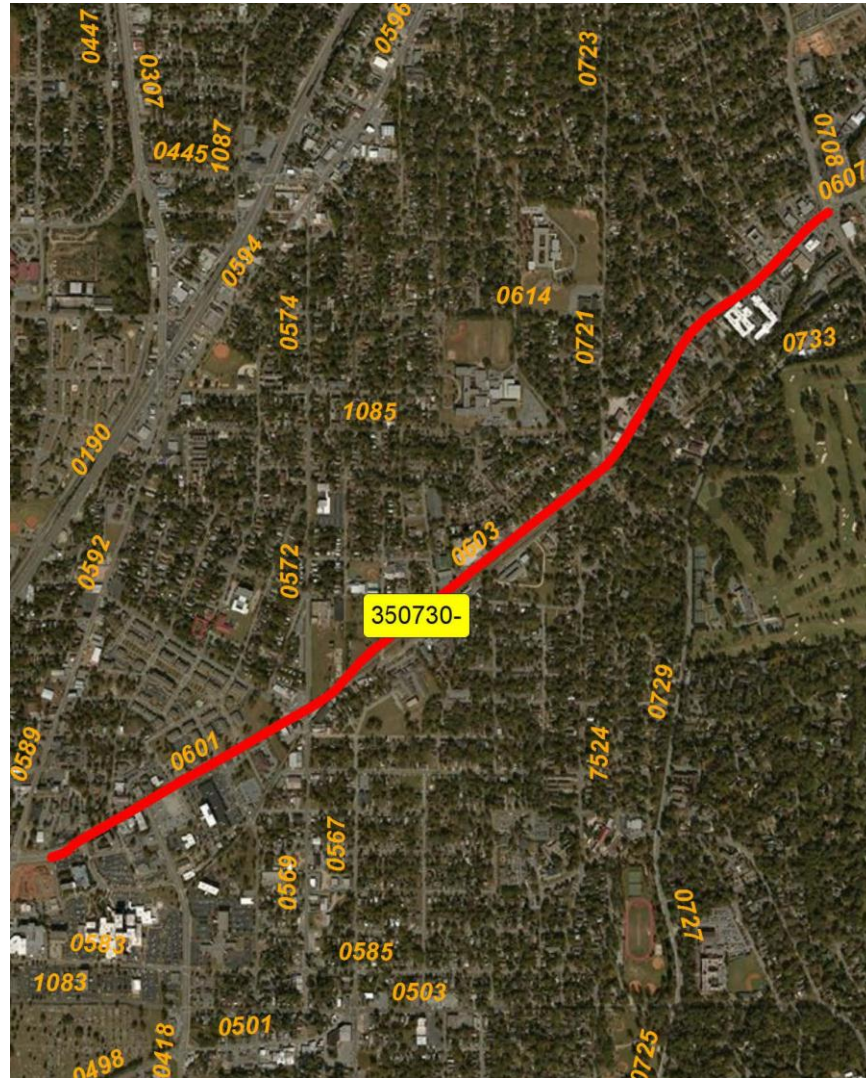
****Note: Bridge Bond Project**



SR 982/TALBOTTON RD FROM 7TH AVE TO WOODRUFF RD/HILTON AVE

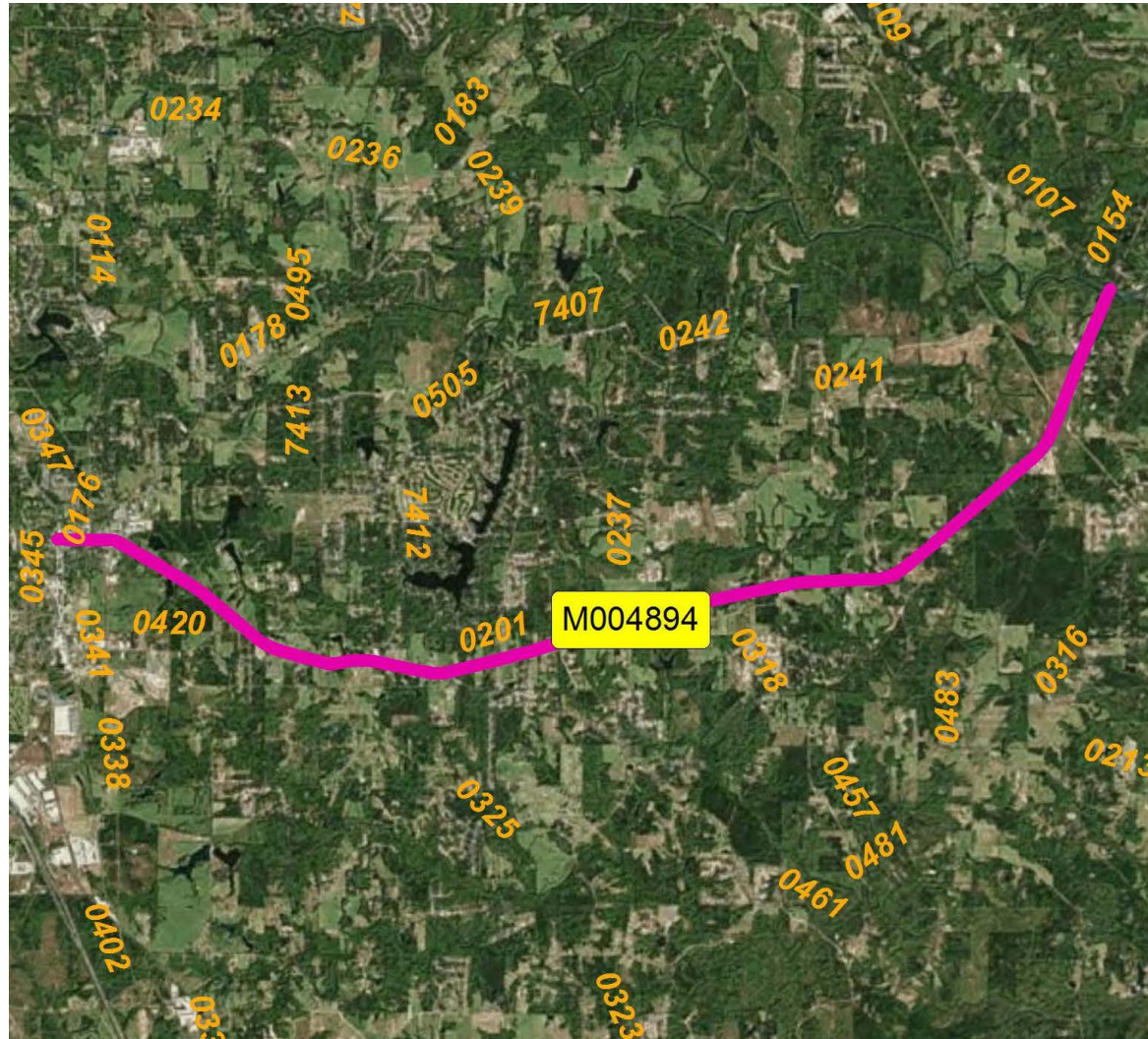
Major Widening Project in Muscogee County

Congressional Districts 2 and 3



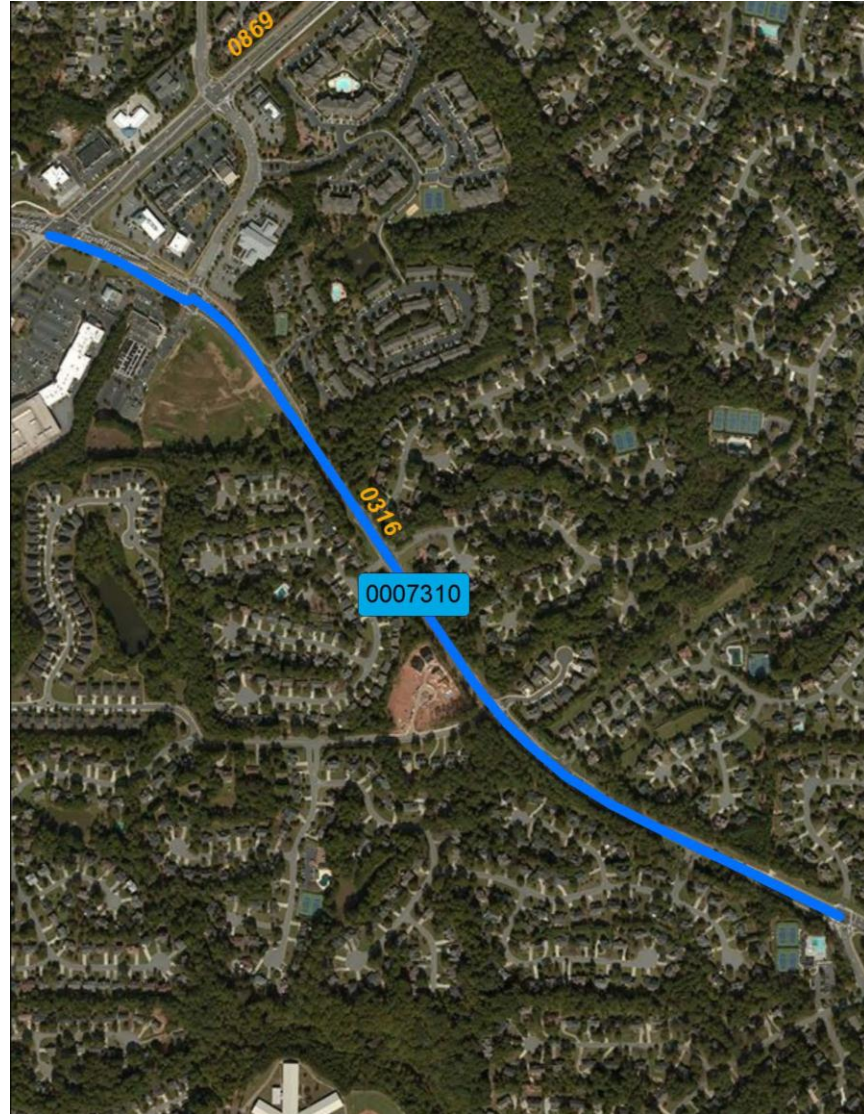


SR 81 FROM SR 20 TO NEWTON COUNTY LINE Resurfacing Project in Henry County Congressional Districts 3 and 10





SR 120 FM CS 65/JONES BRIDGE RD TO CS 79/PARSON RD-PHASE II Multi-use Trail Project in Fulton County Congressional District 6



SR 400 SB @ SR 140 - RAMP IMPROVEMENTS

Operational Improvement Project in Fulton County

Congressional District 6





SR 36 @ YELLOW RIVER 14 MI S OF COVINGTON Bridge Replacement Project in Newton County Congressional District 10

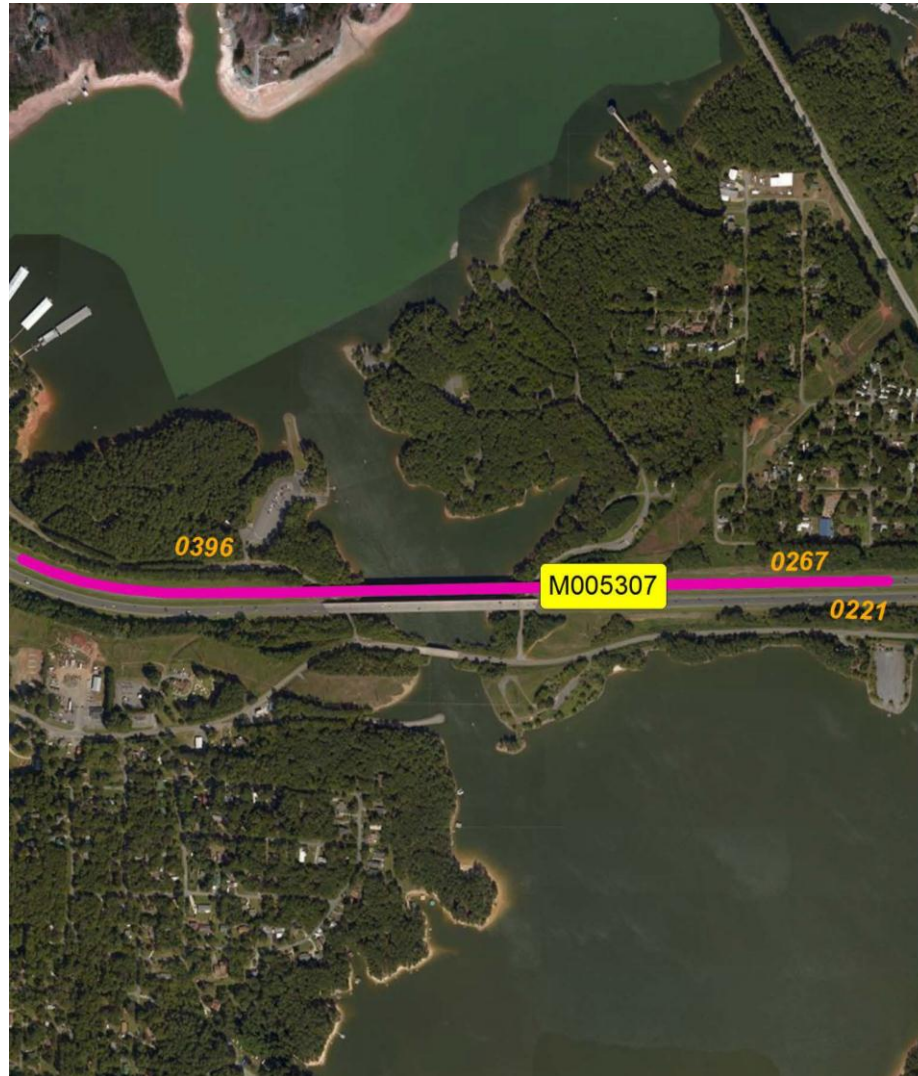


SR 36 @ YELLOW RIVER 14 MI S OF COVINGTON Bridge Replacement Project in Newton County Congressional District 10 (continued)





I-75 SB & NB @ LAKE ALLATOONA Bridge Rehab Project in Bartow County Congressional District 11



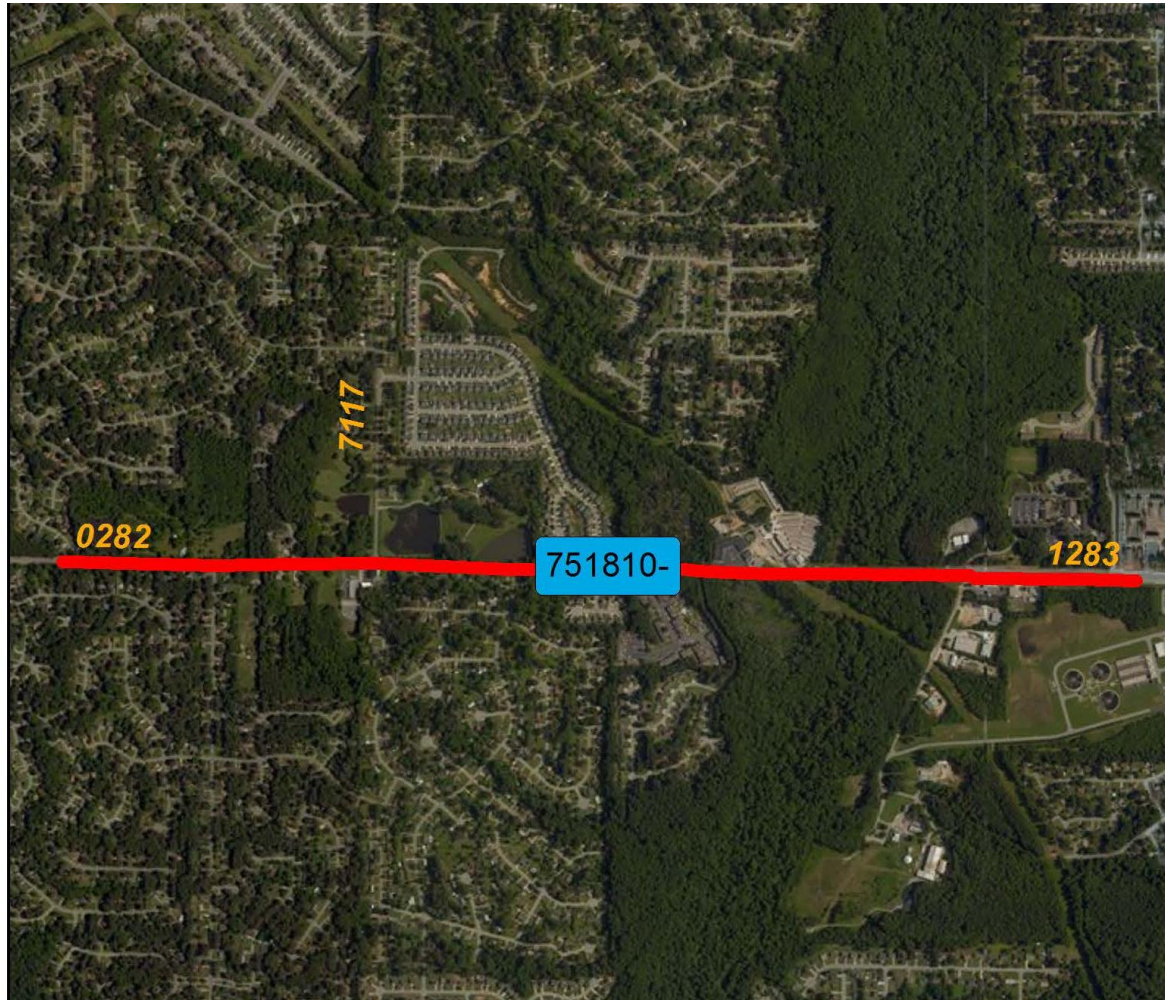


I-75 SB & NB @ LAKE ALLATOONA Bridge Rehab Project in Bartow County Congressional District 11 (continued)





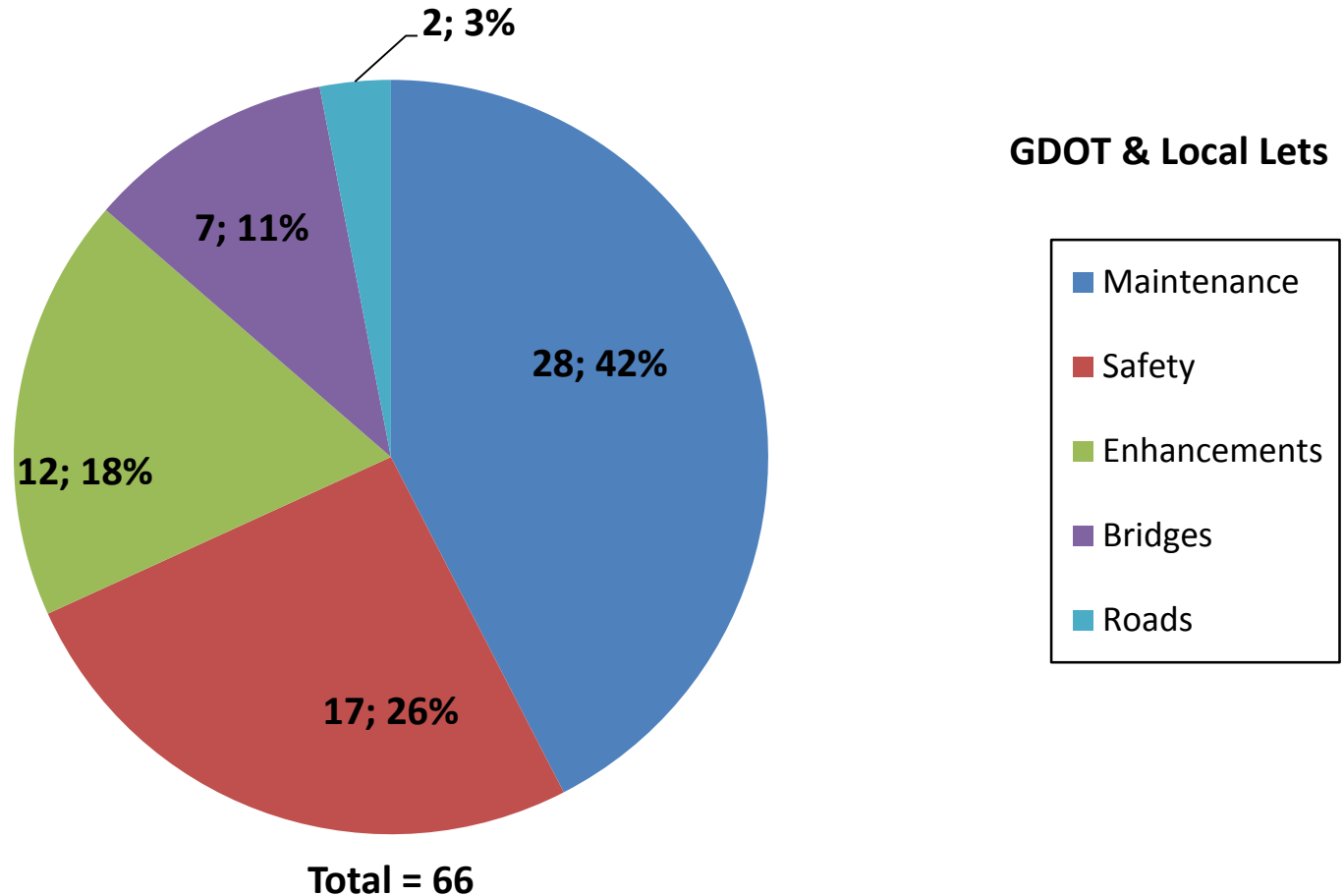
CR 1337/FLINT RIVER RD FM GLENWOOD DR TO KENDRICK RD – GRTA Widening Project in Clayton County Congressional District 13





Fiscal Year 2016 Letting Report

Number of Projects May 2016 Letting



Does not include LMIG Projects

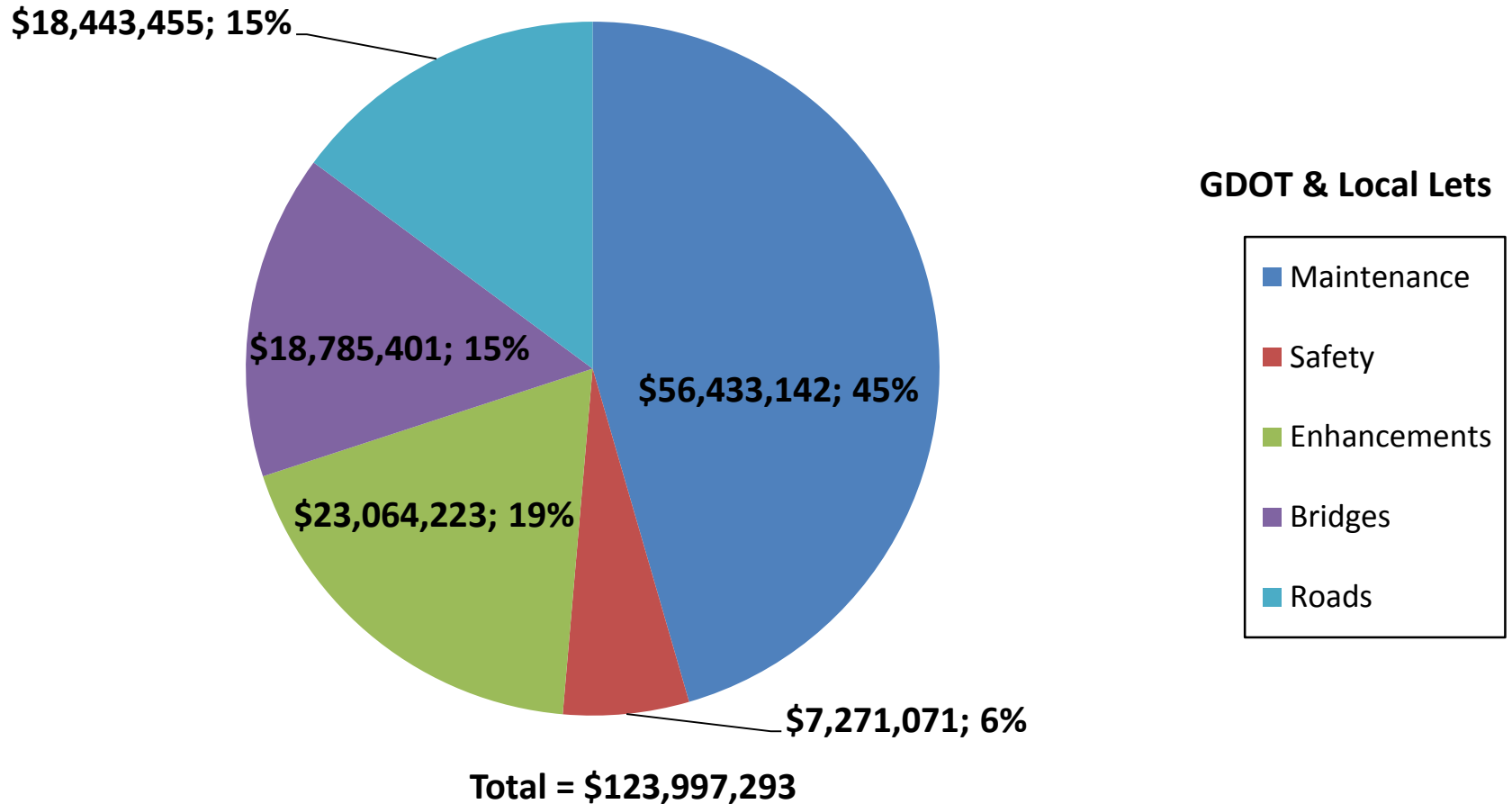
As of April 14, 2016
Source TPro – Chief Approved FY '16 Letting List



Fiscal Year 2016 Letting Report

Dollar Amount of Projects

May 2016 Letting



Does not include LMIG Projects

As of April 14, 2016

Source TPro – Chief Approved FY '16 Letting List