



CHAMP

Coordinated Highway Assistance & Maintenance Program

Committee of the Whole

1/18/17

Andrew Heath, P.E., State Traffic Engineer

CHAMP – What is it?

- This is a brand new program.
 - A statewide freeway service patrol.
- Covering all GA interstates outside of HERO territory (except I-24, I-59)
- Funded with 100% state dollars
- Contract staff
- 16 hours per day / 7 days per week / 365 days per year
 - A free service

Overview of Freeway Service Patrols (FSP)

- Nationwide Survey conducted in 2008.
 - More than 1,900 Full Time Operators representing 84 agencies
 - About 470 Part Time Operators representing 69 agencies
 - About 660 Operators perform FSP and other duties



Overview of Freeway Service Patrols (FSP)

- Largest programs?
 - CA (438), FL (126), VA (108), **GA (100)**, NY (98), IL (95), MD (85), NJ (77), TN (75) and TX (66)



Overview of Freeway Service Patrols (FSP)

- Largest programs with CHAMP?
 - CA (438), **GA (154)**, FL (126), VA (108), NY (98), IL (95), MD (85), NJ (77), TN (75) and TX (66)



Overview of Freeway Service Patrols (FSP)

- Duties:
 - Most: Handle Motorist Assistance (88%+)
 - Many: Handle Roadway Clearance (65%)
 - Some: Authorized as Emergency Vehicles (43%)
 - Few: Transfer Fuel from Overturned Vehicles (13%)

HERO does all of these!

CHAMP will do the first 2.



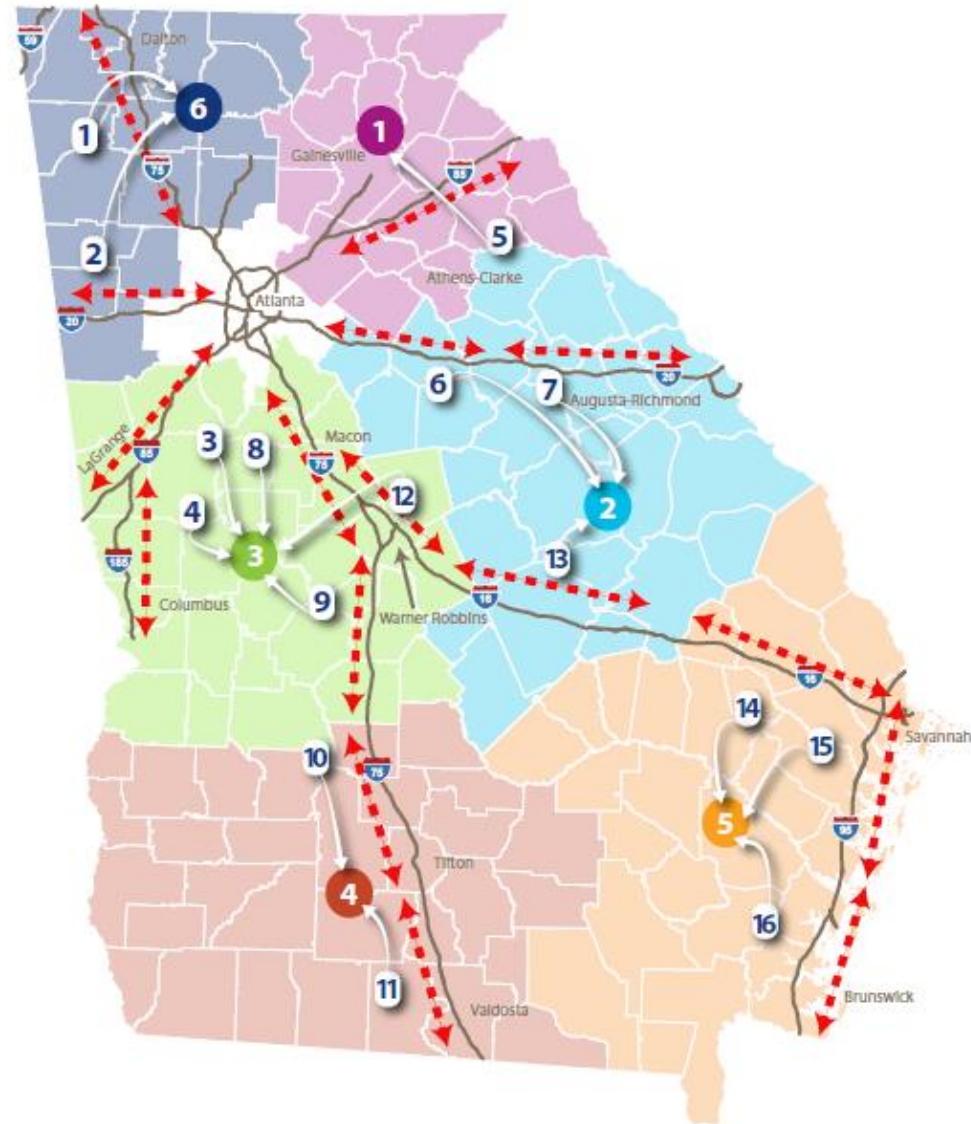
Procurement

- Competitive solicitation through request for proposals.
 - Awarded to AECOM team; KCI and Kennedy Engineering (DBE) subcontractors
- 3 year contract with option to extend



Scope

- 16 interstate routes approx. 50 miles/each
 - Approx. 72 staff
 - 3 managers
 - 3 supervisors
 - 48 operators
 - 18 dispatchers
- 16 hrs/day; 7 days/wk
 - After Hours On-call



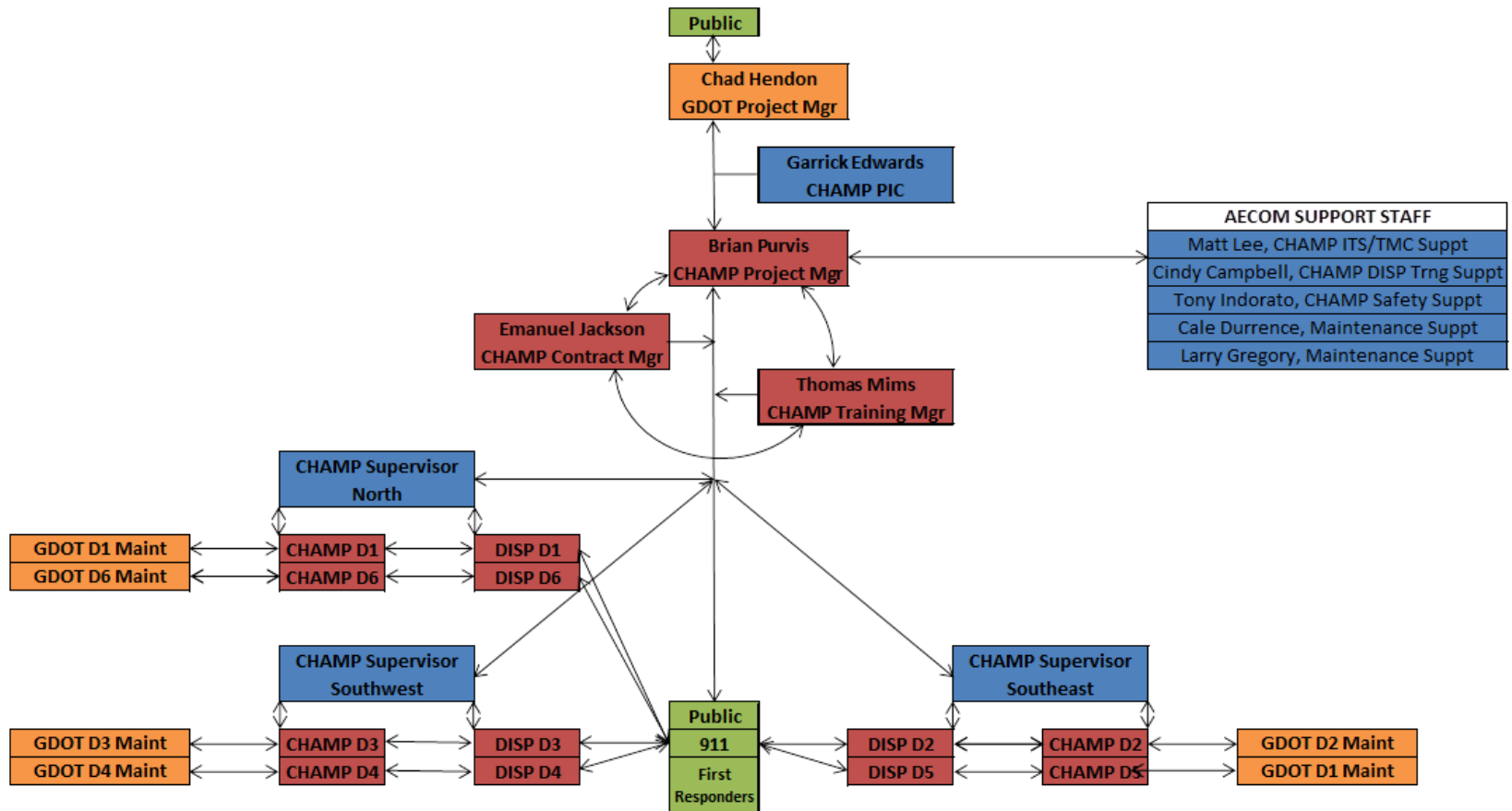
Scope

- What sets CHAMP apart?
 - Maintenance Duties
 - Remove minor debris and trash
 - Clear clogged drainage
 - Remove vegetative growth
 - Respond in lieu of GDOT Maintenance Foreman





Organization





Training

	Day 1	Day 2	Day 3	Day 4	Day 5	Day 6	Day 7	Day 8	Day 9	Day 10	Day 11-15		
800	AECOM WELCOME	ICS 100 INTRODUCTION TO INCIDENT COMMAND SYSTEM	FIRST AID, CPR AND AED TRAINING	ANTI-TERRORISM	RAM DUTIES: CHANGING TIRES, JUMP BATTERY, COORD TOW, PROVIDE FUEL, MINOR REPAIRS, RELOCATE VEHICLE, REMOVE DEBRIS, CLIP VEGETATION	REVIEW OF DISPATCH CENTER OPERATIONS	FHWA SHRP2 TIM TRAINING TO INCLUDE INFORMATION SESSION WITH GDOT AND OUTSIDE AGENCIES	UNIFORM POLICY	WORK ZONE TRAFFIC CONTROL REVIEW: TEMPORARY VS LONG TERM	TIME SHEETS, EXPENSES AND PERSONNEL WRAP UP	Field Trials and Operator Certification		
900	GDOT WELCOME			EM PLAN & EVAC				SLIPS, TRIPS, FALLS				REVIEW OF OPERATOR TRUCK MSG BOARD, EQUIP REVIEW, PRE-CHECK INSP	DEALING WITH THE PUBLIC
1000	COURSE OVERVIEW			AECOM NEW HIRE PAPERWORK				FIRE EXTINGUISHER	BACK INJURY	EYE PROTECTION		MAINTENANCE PROCEDURE REVIEW: PAVEMENT, DRAINAGE, SIGNS, SIGNALS, SHOULDERS, VEGETATION, GUARDRAIL, MARKINGS, ETC.	TABLE TOP EXERCISE, OUTDOOR EXERCISE, COMMUNICATION EXERCISE
1100	INTRODUCTIONS	CHEM & HAZARD COMMUNICATION	HEARING PROTECT		VEGETATION/ENVIR	COMMUNICATION EXERCISE	ASSETS AND OTHERS		ABANDONED AND DISABLED VEHICLE POLICY				
1200													
1300	AECOM FIELD SAFETY TRAINING	BEHAVIOR BASED SAFETY	FIRST AID, CPR AND AED TRAINING	HEARING PROTECT	WEATHER SAFETY	IS 700 NATIONAL INCIDENT MANAGEMENT SYSTEM, AN INTRODUCTION	AECOM EMPLOYEE ORIENTATION	GDOT SOFTWARE REVIEWS: WEBEOC, NAVIGATOR, AGILE ASSETS AND OTHERS	USE OF EMERGENCY VEHICLE LIGHTING AND TRUCK EQUIPMENT PROCEDURES	PERFORMANCE MEASURES, REPORTS, WRAP UP AND OPPORTUNITIES FOR IMPROVEMENT			
1400	IS 700 NATIONAL INCIDENT MANAGEMENT SYSTEM, AN INTRODUCTION			AECOM EMPLOYEE ORIENTATION	FOOT SAFETY							ANIMAL SAFETY	
1500	AECOM NEW HIRE PAPERWORK	RESPECT	FIRST AID, CPR AND AED TRAINING	HEAD PROTECTION	DISTRACTED DRIVING	IS 700 NATIONAL INCIDENT MANAGEMENT SYSTEM, AN INTRODUCTION	AECOM EMPLOYEE ORIENTATION	GDOT SOFTWARE REVIEWS: WEBEOC, NAVIGATOR, AGILE ASSETS AND OTHERS	USE OF EMERGENCY VEHICLE LIGHTING AND TRUCK EQUIPMENT PROCEDURES	PERFORMANCE MEASURES, REPORTS, WRAP UP AND OPPORTUNITIES FOR IMPROVEMENT			
1600		DRUG FREE		HAND & POWER TOOLS	BACKING SAFETY								
1700													

Roll-Out Schedule

- Training/Implementation Schedule
 - 2 week rotation per district starting in D1
 - Continued outreach to GDOT Staff/TMC/GEMA
 - Outreach to Media/Emergency Responders
 - Incident Response and Field Training

	Month 2				Month 3				Month 4				Month 5				Month 6										
begin week	10/17	12/12	12/19	12/26	1/2	1/9	1/16	1/23	1/30	2/6	2/13	2/20	2/27	3/6	3/13	3/20	3/27	4/3	4/10	4/17	4/24	5/1	5/8				
end week	10/21	12/16	12/23	12/30	1/6	1/13	1/20	1/27	2/3	2/10	2/17	2/24	3/3	3/10	3/17	3/24	3/31	4/7	4/14	4/21	4/28	5/5	5/12				
week number	week 1	week 9	week 10	week 11	week 12	week 13	week 14	week 15	week 16	week 17	week 18	week 19	week 20	week 21	week 22	week 23	week 24	week 25	week 26	week 27	week 28	week 29	week 30				
District 1		District 1	Interview	RFA	2 week notice	training D13 Trucks	3 Ops, 1 Sup, 3 KCI Disp Begin Operations																				
District 2			District 2	Interview	RFA	2 week notice	training D26 Trucks	9 Ops, 1 Sup, 3 KEA Disp Begin Operations																			
District 3				District 3	Interview	RFA	2 week notice	training D315 Trucks	15 Ops, 1 Sup, 3 KCI Disp Begin Operations																		
District 4					District 4	Interview	RFA	2 week notice	training D46 Trucks	6 Ops, 3 KCI Disp Begin Operations																	
District 5						District 5	Interview	RFA	2 week notice	training D59 Trucks	9 Ops, 3 KCI Disp Begin Operations																
District 6							District 6	Interview	RFA	2 week notice	training D6 Trucks	6 Ops, 3 KEA Disp Begin Operations															

Public Outreach

- Media launch by District
- Robust media relations
- Emergency Response Community
- City and County Governments
- CHAMP education handouts

CHAMP
Coordinated Highway Assistance
& Maintenance Program

Safety is Georgia DOT's #1 priority and CHAMP is critical to enhancing safety on the roads. This new GDOT service provides emergency response, maintenance support and motorist assistance outside of Atlanta metro.

CHAMP crews:

- Provide emergency response as needed
- Remove roadway debris and address maintenance issues
- Offers motorists assistance

CHAMP includes:

- 48 full time operators,
- 18 full time dispatchers and 54 trucks
- Patrolling 16 initial interstate routes (EXCEPT I-59 and I-24).
- Patrolling 16 hours a day and on-call the remaining hours—7 days a week.

Reach CHAMP statewide by calling 511:

Motorist travelling on the interstate **MUST** Slow Down and "Move Over" one lane when CHAMPs are working – **IT IS THE LAW!**

The Transportation Funding Act of 2015 makes this new Georgia DOT program possible.

A SERVICE PROVIDED BY
GDOT
Georgia Department of Transportation

CHAMP
Coordinated Highway Assistance
& Maintenance Program



The Vehicle





Uniform





Questions?

Andrew Heath, P.E., State Traffic Engineer
404-625-2828