



Atlanta BeltLine Update

State Transportation Board

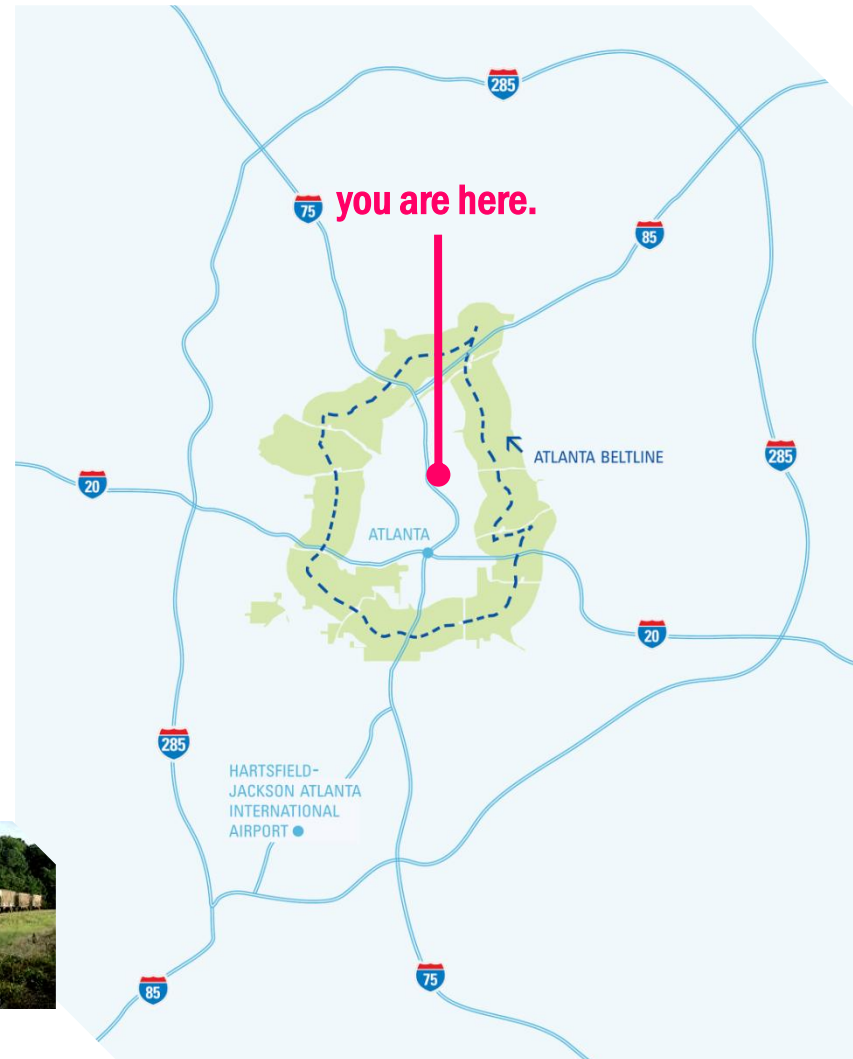
Intermodal Committee

// July 17, 2013

// Where is the Atlanta BeltLine?

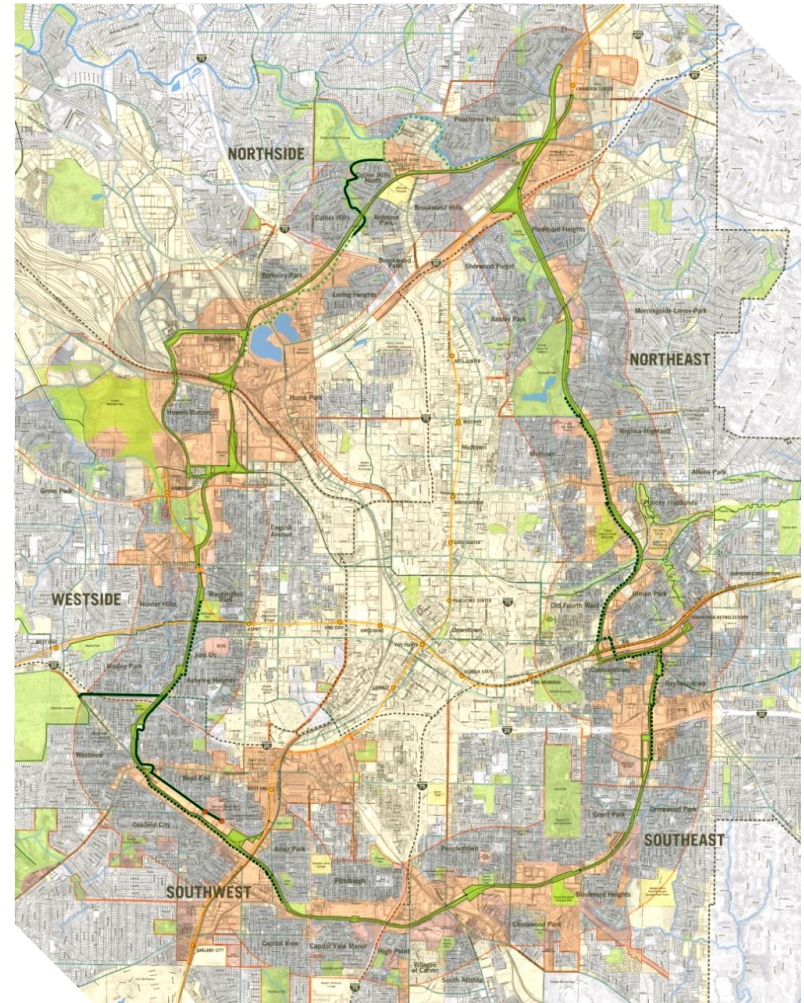


- In the heart of the Atlanta region
- Connects many of Atlanta's cultural destinations
- Utilizes historic freight rail rights of way around the center of town





- Connects 45 neighborhoods
- 22% of City of Atlanta population lives in the planning area
- 19% of the City's land mass is inside the planning area
- 22 miles of light rail transit
- 33 miles of multi-use trails
- 40% increase in Atlanta's parkland
- 6,500 acre TAD



// The Atlanta BeltLine: Key Elements



**Atlanta
BeltLine**



Parks and Arboretum



Trails



**Transit & Transportation
Infrastructure**



**Jobs & Economic
Development**



**Affordable Workforce
Housing**



**Streetscapes &
Public Art**



Historic Preservation



**Environmental
Clean-up**



Project Owner and Sponsor



INVESTATLANTA
Atlanta's Development Authority

Redevelopment Authority



Implementation Agent

// Progress to Date



In Design:

- 9 Gateway/TCSP Plaza
 - 10 Eastside Trail South
 - 11 Southwest Trail
- - Trails
● - Parks

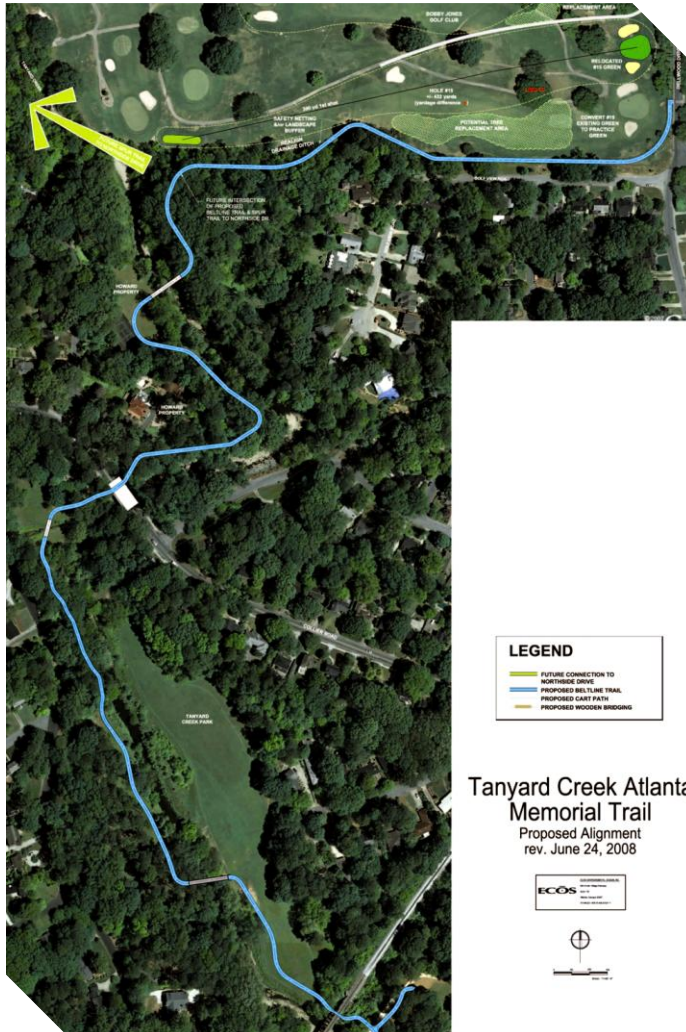
Completed:

- 1 Eastside Trail (Oct 2012)
- 2 Historic Fourth Ward Park (July 2011)
- 3 Skate Park (June 2011)
- 4 Boulevard Crossing Park (Sept 2011)
- 5 D.H. Stanton Park (May 2011)
- 6 West End Trail Phase I (Oct 2008)
- 7 Northside Trail Opened (April 2010)
- 8 West End Trail Phase II (June 2010)



- Approximately 2.4-mile multi-use trail
- Connects historic West End neighborhood to Westview Cemetery
- Funded and constructed by PATH Foundation with **TE Grant**
- Phase I opened 10/08; Phase II opened 06/10





- Approximately 0.9-mile multi-use trail
- Opened to the public April 2010
- Tanyard Creek Park, Howard Park and Bobby Jones Golf Course in Buckhead
- Funded and constructed by PATH Foundation with a **TE Grant**





\$775 million in new private development within half a mile of this section of the Atlanta BeltLine



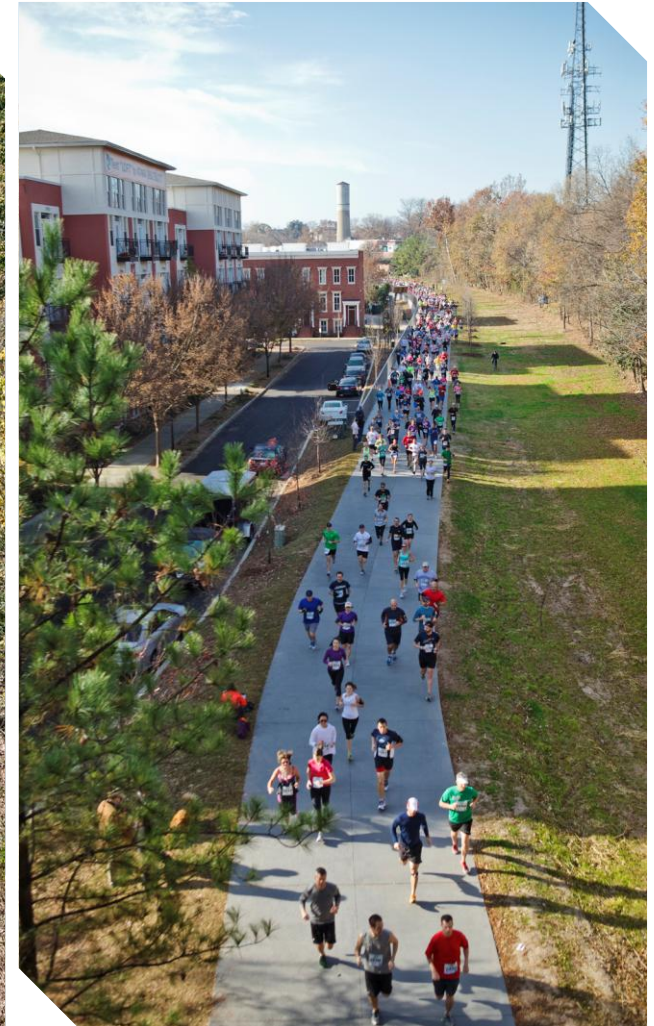
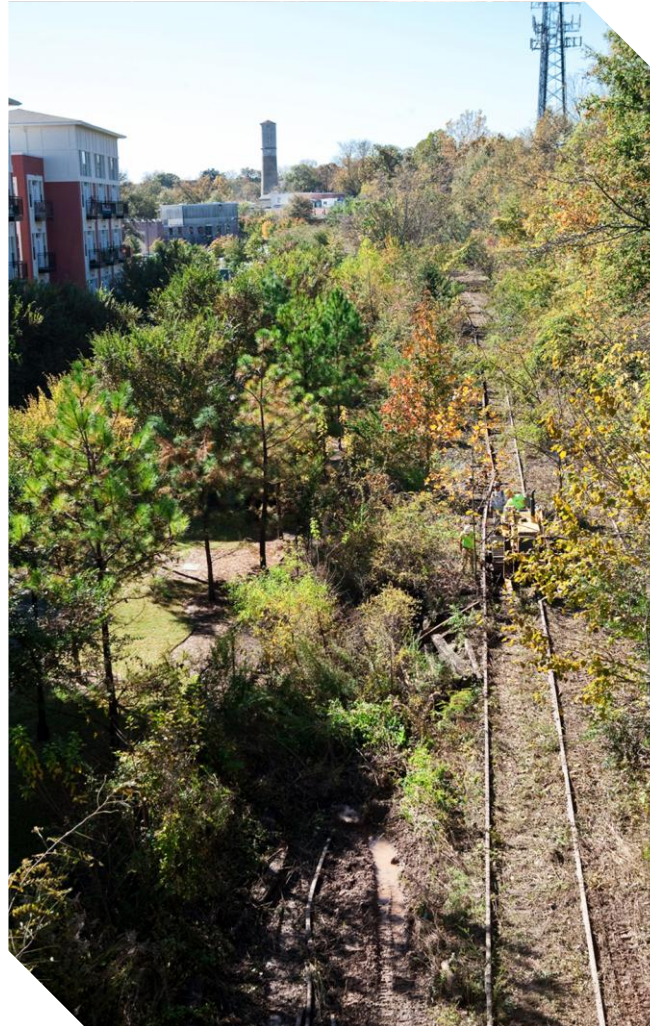
Trail Users

Sunday, May 12

- Bike: 6,956
- Ped: 10,699
- Total User: 17,655

Thursday, May 16

- Bike: 3,233
- Ped: 4,882
- Total User: 8,115



// Eastside Trail - Before



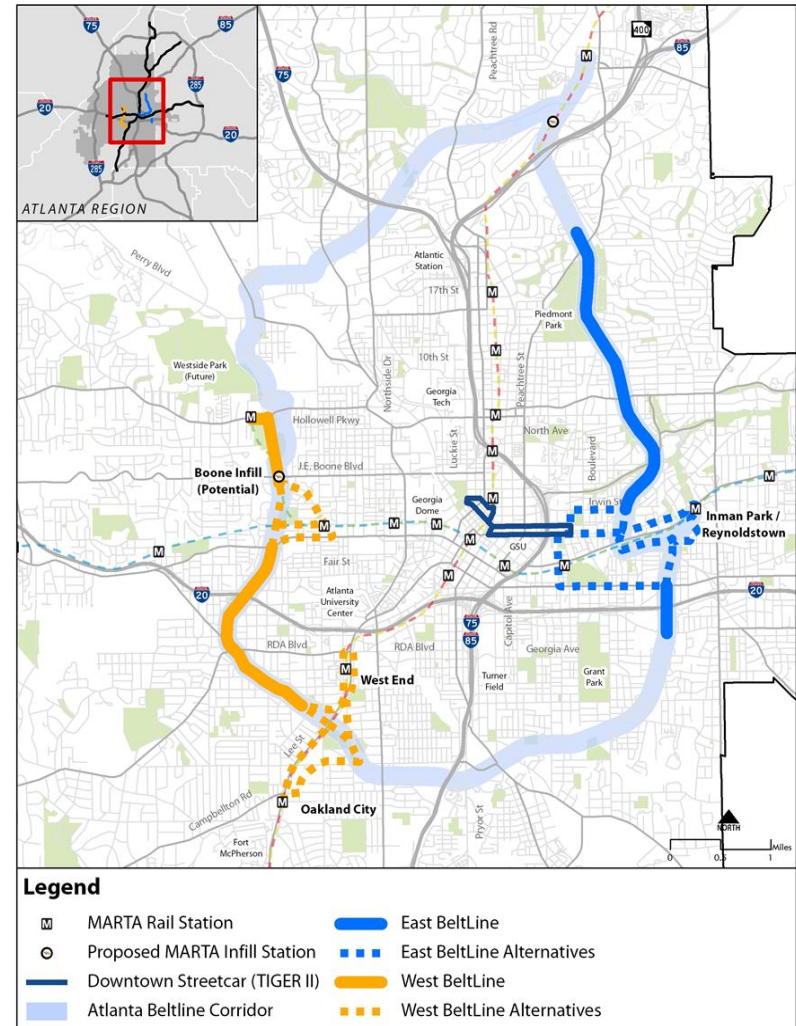
// Eastside Trail - After



- Submitted application for federal TIGER V grant
- Grant would provide remaining \$18 million needed for Southwest Atlanta BeltLine Corridor Trail
- 2.5 miles of multi-use trails within the Atlanta BeltLine corridor
- 16 accessible points of entry
- Safe routes and connections to four local schools
- Connections from neighborhoods to four parks



- Environmental Assessment (EA) Studies
- Study Areas
 - Atlanta BeltLine West
From West End MARTA to Bankhead MARTA
 - Atlanta BeltLine East
From Glenwood Park to Montgomery Ferry Road
 - Studies will kickoff Fall 2013 with a public community engagement process
- Additional EAs funded for extensions of Atlanta Streetcar to be managed by ABI



// Historic Fourth Ward Park

\$400 million in private
new development
within a block of park



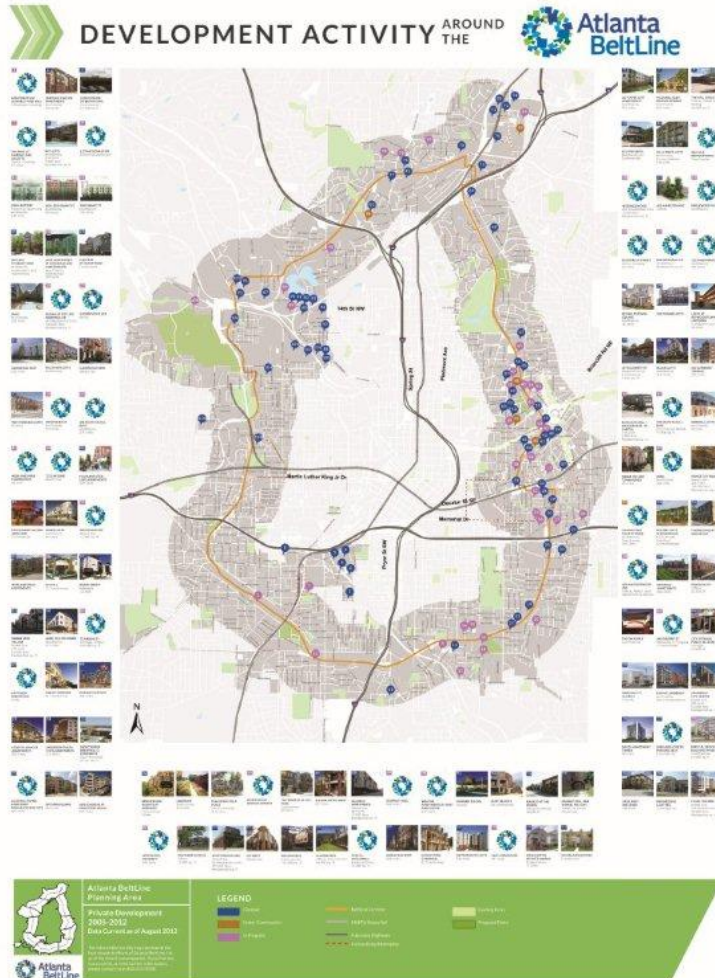
// H4WP Skate Park



// DH Stanton Park

- Renovation and expansion of an existing 8-acre City park
- Funded by Park Improvement Bonds, a grant from the Blank Foundation and the Capital Campaign
- City's first energy cost-neutral park
- Re-opened May 13, 2011





Private development since 2005 in the Atlanta BeltLine Corridor area:

- **Over 90 projects** complete or underway *
- **\$1.1 billion** of new taxable value in tax increment finance district
- **8,908** new residential units completed
- **870,700 SF** of new commercial space completed

**Projects larger than 10 dwelling units and/or 10,000 square feet*



Lake in Historic 4th Ward Park with the old Sears Building, the future home of Ponce City Market, in the background

Ponce City Market

- **\$180M Rehabilitation** of the former Sears Building (1926)
- **2 million sq. Ft. Building** – the largest brick building in the Southeast U.S.
- Class A office, Residential, Restaurants, Commercial, Bike Station, Gardens
- Being built by Jamestown Properties developer of Chelsea Market in New York City

- ✓ Northside Trail – TE Grant via PATH Foundation
- ✓ West End Trail – TE Grant via PATH Foundation
- Southwest Trail – TE Grant award to ABI
- Reynoldstown and Southwest Corridors – Lease and Purchase Option
- Atlanta BeltLine Corridor Design – funding through TIP
- TCSP Grant for Ponce Plaza
- With ARC, LCI Grant for Ponce de Leon Avenue Streetscape Improvements
- ❖ TIGER V – support for grant application



Thank you!

www.beltline.org