



February 2019 Letting Report

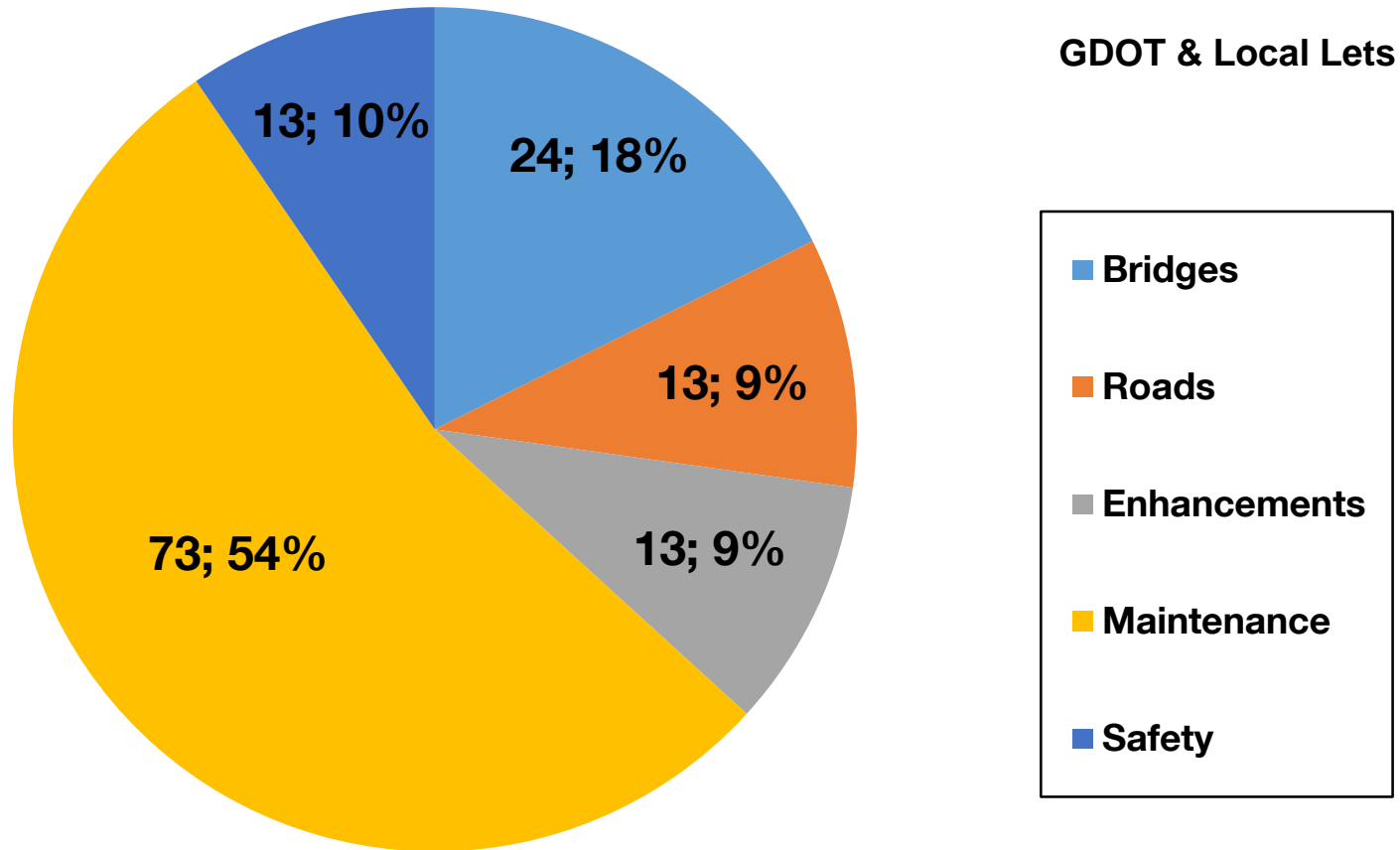
Albert V. Shelby, III
Director of Program Delivery
January 17, 2019



Fiscal Year 2019 Letting Report

Number of Projects Let in FY 2019

(Contractor Low Bid Award Data)



Total = 136

Does not include LMIG Projects

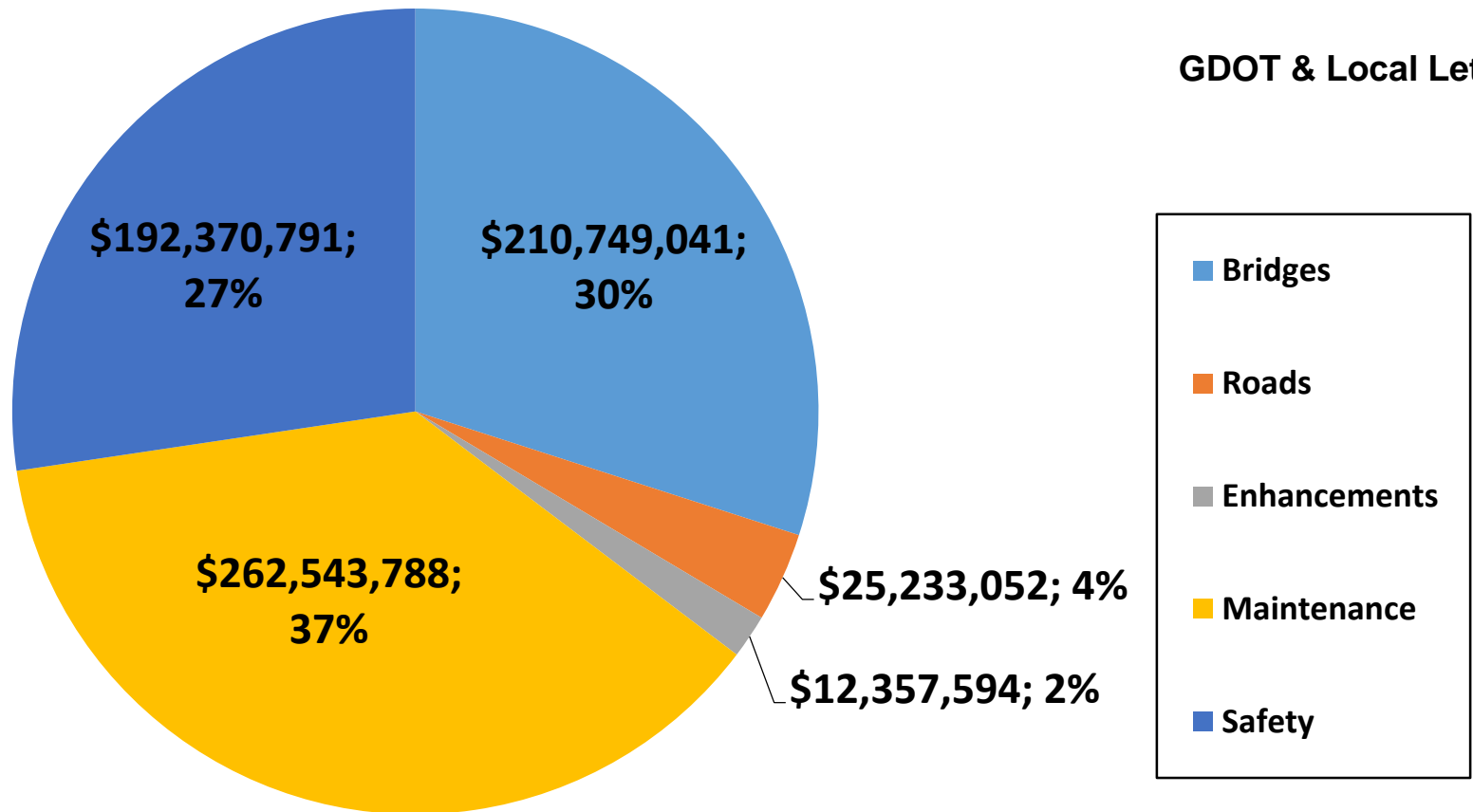
*As of January 2, 2019
Source Bidding Administration*

Fiscal Year 2019 Letting Report

Dollar Amount of Projects Let in FY 2019

(Contractor Low Bid Award Data)

GDOT & Local Lets



Does not include LMIG Projects

Total = \$703,254,265

*As of January 2, 2019
Source Bidding Administration*

December 2018 Letting Results

Summary	Presented to GDOT Board (Includes Adjustments)	Low Bid (Awarded to Contractor)	Low Bid w/Adjustments (Total Project Obligation)
GDOT Let (Project Count)	22	20	20
GDOT Let (Dollars)	\$144,910,507	\$158,797,574	\$163,250,452
Local Let (Project Count)	3	N/A Local Let	N/A Local Let
Local Let (Dollars)	\$3,435,529	N/A Local Let	N/A Local Let

*Low Bid Award Amount includes the Deferred and Awarded projects.
Does not include Engineering and Inspection, Utilities, Liquid AC, Incentives, LMIG and Rejected projects.



Partial Federal Government Shutdown Impact to the February 2019 Letting

GDOT and Local Let Projects Shifted Out of the January 2019 Letting

Project ID	Description	Primary County	Primary Work Type	Congressional District	Project Let By	Project Sponsor
M005770	SR 27 FROM YELLOW BLUFF CREEK TO SR 25	Glynn	Resurface & Maintenance	001	DOT	GDOT
M005776	SR 37 FROM 0.21 MI E OF SR 11 TO 0.02 MI W OF SR 38	Clinch	Resurface & Maintenance	001, 008	DOT	GDOT
M004997	SR 39 CONN FROM SR 39 TO SR 1/US 27	Stewart	Resurface & Maintenance	002	DOT	GDOT
M005248	SR 3/US 19 FROM SR 96 TO UPSON COUNTY LINE;INC SR 3 SO	Taylor	Resurface & Maintenance	002	DOT	GDOT
M005759	SR 270 FROM SR 93 TO COLQUITT COUNTY LINE	Mitchell	Resurface & Maintenance	002	DOT	GDOT
M005638	SR 1/US 27 FROM CR 561/SPRINGDALE RD TO CS 1181/MAPLE ST	Carroll	Resurface & Maintenance	003	DOT	GDOT
M004967	SR 15 FROM WASHINGTON COUNTY LINE TO SR 16	Hancock	Resurface & Maintenance	010	DOT	GDOT
M005754	SR 104 FROM CR 1427/WILLIAM FEW PKWY TO SR 47/SR 150	Columbia	Resurface & Maintenance	010, 012	DOT	GDOT

GDOT and Local Let Projects Shifted Out of the January 2019 Letting

Project ID	Description	Primary County	Primary Work Type	Congressional District	Project Let By	Project Sponsor
M005645	SR 92 FROM SR 6 TO S OF CR 73/OLD BURNT HICKORY ROAD	Paulding	Resurface & Maintenance	011, 014	DOT	GDOT
M005653	SR 14 ALT FROM SR 70 TO SR 14	Fulton	Resurface & Maintenance	013	DOT	GDOT
M005796	SR 92 FM FAYETTE COUNTY LINE TO 0.01 MI N OF CS 4003/BAY ST	Fulton	Resurface & Maintenance	013	DOT	GDOT
M005805	SR 70 FROM CHATTAHOOCHEE RIVER TO CHATTAHOOCHEE RIVER	Douglas	Resurface & Maintenance	013	DOT	GDOT
M005814	SR 6 FROM PAULDING COUNTY LINE TO S OF RICHARD SAILORS PKWY	Cobb	Resurface & Maintenance	013	DOT	GDOT

GDOT and Local Let Projects Shifted Out of the February 2019 Letting

Project ID	Description	Primary County	Primary Work Type	Congressional District	Project Let By	Project Sponsor
0010739	SR 144 @ I-95 SB & NB OFF RAMPs	Bryan	Roundabout	001	DOT	GDOT
0012636	SR 14; CS 4130/W CAMPBELLTON ROAD & CS 4050/SMITH STREET-LCI	Fulton	Bicycle/Ped. Facility	013	LOC	Fairburn
M005360	SR 1BU FROM SR 1 TO SR 1 IN BLAKELY	Early	Resurface & Maintenance	002	DOT	GDOT
M005603	SR 19 FROM CS 766/LANCASTER STREET TO CR 526/OLD MACON ROAD	Laurens	Resurface & Maintenance	012	DOT	GDOT
M005817	I-75 NB FROM SR 36 TO SR 155	Henry	Resurface & Maintenance	003, 010	DOT	GDOT
M005856	I-285 @ 5 LOCS IN FULTON COUNTY - BRIDGE PRESERVATION	Fulton	Bridges	013	DOT	GDOT
M005858	SR 12 @ SNAPPFINGER CREEK - BRIDGE REHAB	DeKalb	Bridges	004	DOT	GDOT
M005859	I-520 FROM SR 232 TO CSX #279466S	Richmond	Resurface & Maintenance	012	DOT	GDOT
M005860	SR 232 FROM CR 579/SCOTT NIKON MEMORIAL BLVD TO I-520	Richmond	Resurface & Maintenance	012	DOT	GDOT
M005938	I-75 SB & NB @ SR 5 CONN - BRIDGE REHAB	Cobb	Bridges	011	DOT	GDOT
M005939	SR 25/US 17 @ SIDNEY LANIER - BRIDGE CABLE DAMPING	Glynn	Bridges	001	DOT	GDOT

GDOT and Local Let Projects

February 2019 Letting

GDOT and Local Let Projects

February 2019 Letting

Project ID	Description	Primary County	Primary Work Type	Congressional District	Project Let By	Project Sponsor
0013282	SR 25 @ PIPEMAKER CANAL - CULVERT REPLACEMENT	Chatham	Bridges	001	DOT	Chatham County
0015773	OLD DIXIE HWY FROM SR 4/SR 15/US 1 TO FOLKSTON CITY LIMITS	Charlton	Resurface & Maintenance	001	DOT	GDOT
0015767	CR 27/BALL ROAD @ PUMPKIN CREEK	Randolph	Bridges	002	DOT	GDOT
M005931	I-75 SB FROM SR 36 TO SR 155	Butts, Henry, and Spalding	Resurface & Maintenance	003, 010	DOT	GDOT
0008121	CS 796/ROCKBRIDGE ROAD FROM ALLGOOD ROAD TO ROWLAND ROAD	DeKalb	Bike/Ped Facility	004	LOC	DeKalb County
0012789	CR 7938/ROCKBRIDGE RD FM ALLGOOD RD TO ROWLAND RD	DeKalb	TE-Bike/Ped Facility	004	LOC	DeKalb County
0009029	SOUTH RIVER TRAIL - PHASE V	DeKalb	TE-Bike/Ped Facility	004, 005	LOC	DeKalb County
0013138	ASHFORD DUNWOODY ROAD & DRESDEN DRIVE-ITS SYS EXPANSION	DeKalb	ITS	006	LOC	Brookhaven
0001810	SR 19/US 23 OVERPASS @ NORFOLK-SOUTHERN RR GRADE CROSSING	Jeff Davis	Railroad Crossing	012	DOT	GDOT

SR 25 @ PIPEMAKER CANAL - CULVERT REPLACEMENT

Bridge Replacement Project in Chatham County

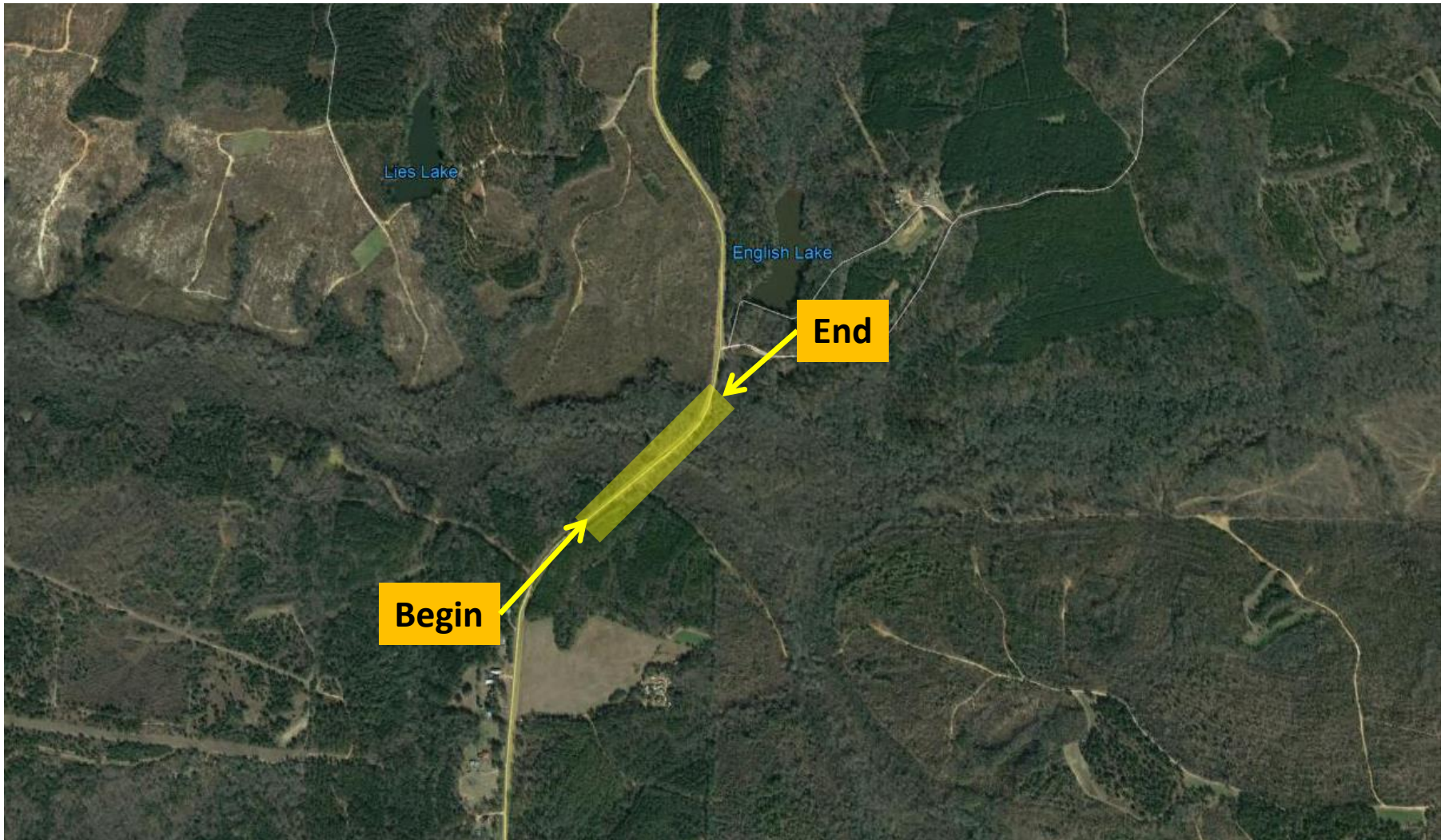
Congressional District 1



SR 25 @ PIPEMAKER CANAL - CULVERT REPLACEMENT
Bridge Replacement Project in Chatham County
Congressional District 1 (Continued)



CR 27/BALL ROAD @ PUMPKIN CREEK
Bridge Replacement Project in Randolph County
Congressional District 2



CR 27/BALL ROAD @ PUMPKIN CREEK
Bridge Replacement Project in Randolph County
Congressional District 2 (Continued)



CS 796/ROCKBRIDGE ROAD FROM ALLGOOD ROAD TO ROWLAND ROAD

Enhancement Projects in DeKalb County

Congressional District 4



SR 19/US 23 OVERPASS @ NORFOLK-SOUTHERN RR GRADE CROSSING

Grade Separated RR Crossing Project in Jeff Davis County

Congressional District 12



SR 19/US 23 OVERPASS @ NORFOLK-SOUTHERN RR GRADE CROSSING
Grade Separated RR Crossing Project in Jeff Davis County
Congressional District 12 (Continued)



Additional Projects to be Advertised in January 2019 with Future Let Dates

January 17, 2019

GDOT Projects

Advertised only in January 2019

Project ID	Description	Primary County	Primary Work Type	Congressional District	Project Let By	Project Sponsor	Future Let Date
0014895	SR 247 @ NS #718364M IN MACON	Bibb	Bridges	002, 008	DOT	GDOT	August 2019
0014899	CR 5813/COLLEGE STREET @ NS #718370R IN MACON	Bibb	Bridges	002	DOT	GDOT	August 2019

SR 247 @ NS #718364M IN MACON
Bridge Replacement Project in Bibb County
Congressional Districts 2 and 8



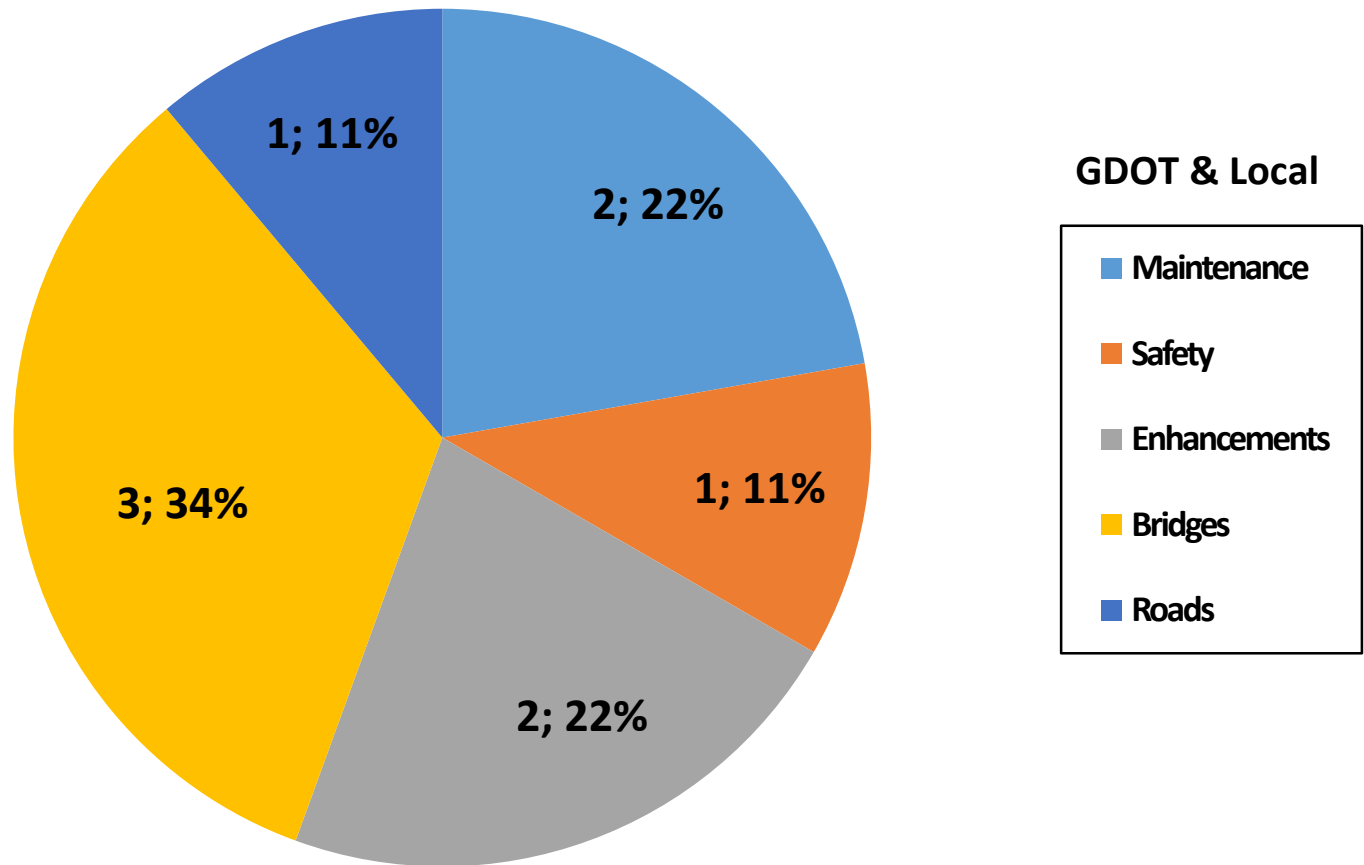
CR 5813/COLLEGE STREET @ NS #718370R IN MACON
Bridge Replacement Project in Bibb County
Congressional District 2



Fiscal Year 2019 Letting Report

Number of Projects

February 2019 Letting



Total = 9

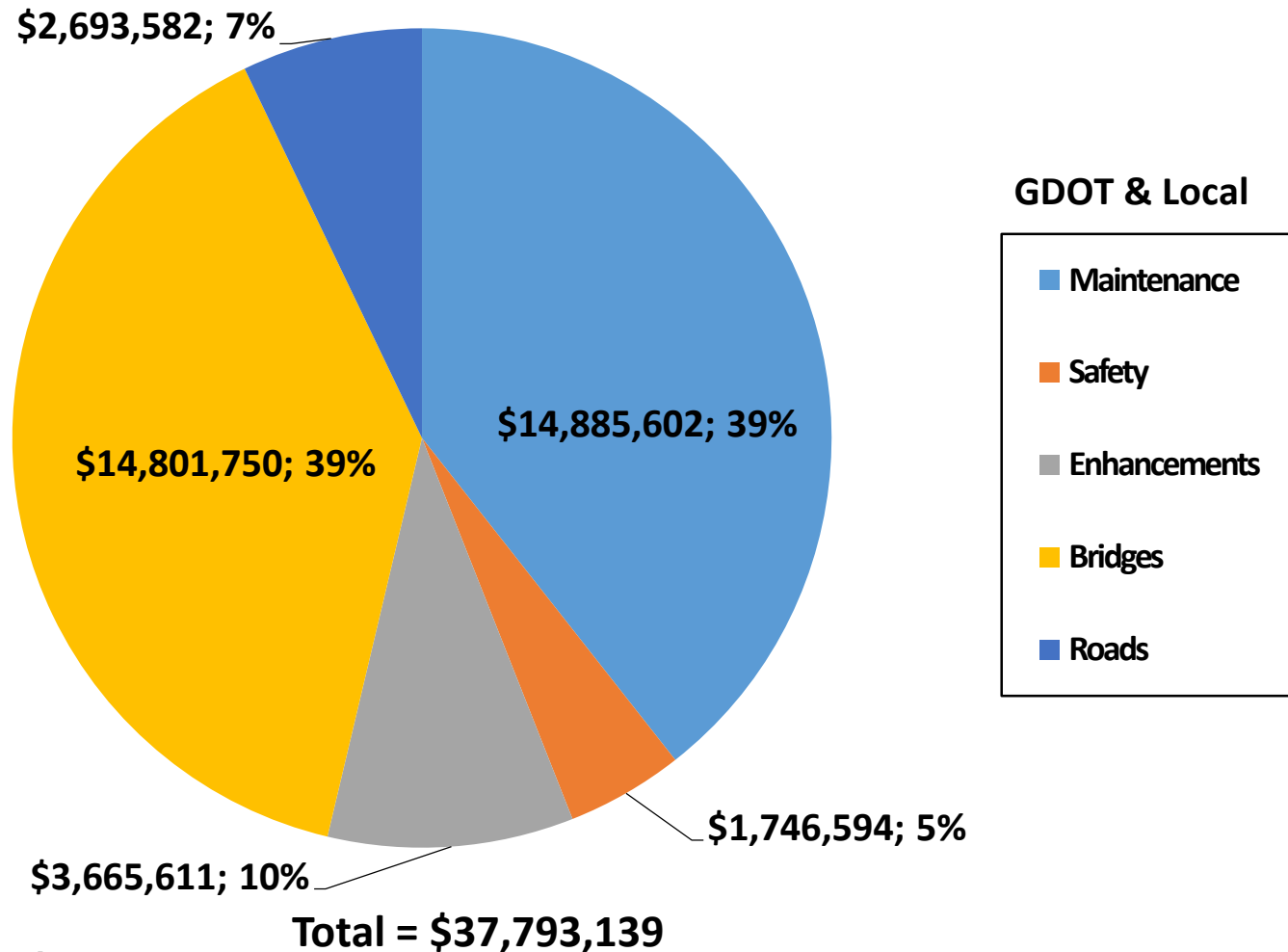
Does not include LMIG Projects

*As of January 8, 2019
Source TPro – Chief Approved FY '19 Letting List*

Fiscal Year 2019 Letting Report

Dollar Amount of Projects

February 2019 Letting



Does not include LMIG Projects

Board Approval

Proposed Revisions To The Construction Work Program

**Jay Roberts
Director of Planning**

January 17, 2019

January 2019 CWP Board Revision

- 1. P.I. No. 0016475, SR 8/US 23@ Lullwater Creek, DeKalb County
Bridge Replacement in Congressional District 5**

Action: Addition to the Program

- 2. P.I. No. 0016476, SR 9/US 19@ CSX #639817J in Atlanta, Fulton County
Bridge Replacement in Congressional District 5**

Action: Addition to the Program

February 2019 CWP Board Revision

- 1. P.I. No. 0016507, I-16 at CR 12/Olive Branch Road 9.1 MI NE of Pembroke, Bryan County
Bridge Replacement in Congressional District 1
Action: Addition to the Program**

- 2. P.I. No. 0016510, SR 89/US 441 at Cypress Creek 1.6 MI S of Fargo, Clinch County
Bridge Replacement in Congressional District 1
Action: Addition to the Program**

- 3. P.I. No. 0016514, SR 89/US 441 at Little Suwanee Creek 8 MI S of Fargo, Echols County
Bridge Replacement in Congressional District 1
Action: Addition to the Program**

February 2019 CWP Board Revision

- 4. P.I. No. 0016508, SR 520/US 27 at First Division Road 7.5 MI NW of Cusseta, Chattahoochee County
Bridge Replacement in Congressional District 2**

Action: Addition to the Program
- 5. P.I. No. 0016520, SR 103 at Mountain Oak Creek 5.5 MI SW of Whitesville, Harris County
Bridge Replacement in Congressional District 3**

Action: Addition to the Program
- 6. P.I. No. 0016521, SR 103 at House Creek 6.5 MI SE of West Point, Harris County
Bridge Replacement in Congressional District 3**

Action: Addition to the Program

February 2019 CWP Board Revision

7. **P.I. No. 0016522, SR 103 at Sand Creek 5.5 MI SE of West Point, Harris County
Bridge Replacement in Congressional District 3**

Action: Addition to the Program

8. **P.I. No. 0016527, SR 362 at Red Oak Creek 6 MI NE of Greenville, Meriwether
County
Bridge Replacement in Congressional District 3**

Action: Addition to the Program

9. **P.I. No. 0016518, SR 8/US 78 at Abandoned Railroad Spur in Atlanta, Fulton
County
Bridge Replacement in Congressional District 5**

Action: Addition to the Program

February 2019 CWP Board Revision

- 10. P.I. No. 0016519, SR 8 at Jackson Creek in Lilburn, Gwinnett County
Bridge Replacement in Congressional District 7**

Action: Addition to the Program

- 11. P.I. No. 0016504, SR 31 at Red Bluff Creek Tributary 9 MI S of Pearson, Atkinson
County
Bridge Replacement in Congressional District 8**

Action: Addition to the Program

- 12. P.I. No. 0016505, SR 3 at Red Bluff Creek 8 MI S of Pearson, Atkinson County
Bridge Replacement in Congressional District 8**

Action: Addition to the Program

February 2019 CWP Board Revision

- 13. P.I. No. 0016513, SR 257 at Gum Swamp Creek 4.7 MI SW of Chester, Dodge County
Bridge Replacement in Congressional District 8**

Action: Addition to the Program

- 14. P.I. No. 0016531, CR 26/Bethel Road at Hat Creek 6.7 MI SE of Sycamore, Turner County
Bridge Replacement in Congressional District 8**

Action: Addition to the Program

- 15. P.I. No. 0016515, SR 5 at the Toccoa River in McCaysville, Fannin County
Bridge Replacement in Congressional District 9**

Action: Addition to the Program

February 2019 CWP Board Revision

- 16. P.I. No. 0016516, SR 106 at Middle Fork Broad River 2.3 MI S of Carnesville,
Franklin County
Bridge Replacement in Congressional District 9

Action: Addition to the Program**
- 17. P.I. No. 0016517, SR 328 at Gumlog Creek 3.8 MI N of Lavonia, Franklin County
Bridge Replacement in Congressional District 9

Action: Addition to the Program**
- 18. P.I. No. 0016523, I-85 at CR 229/Valentine Industrial PWY NW of Jefferson,
Jackson County
Bridge Replacement in Congressional District 9

Action: Addition to the Program**

February 2019 CWP Board Revision

- 19. P.I. No. 0016526, SR 106 at Hudson River 3.8 MI N of Pocatalico, Madison County
Bridge Replacement in Congressional District 9**

Action: Addition to the Program

- 20. P.I. No. 0016530, SR 17 at Broad River 7.5 MI N of Tignall, Elbert County
Bridge Replacement in Congressional Districts 9 and 10**

Action: Addition to the Program

- 21. P.I. No. 0016524, SR 43 at Lloyd Creek 7 MI SW of Lincolnton, Lincoln County
Bridge Replacement in Congressional District 10**

Action: Addition to the Program

February 2019 CWP Board Revision

- 22. P.I. No. 0016525, SR 220 at Soap Creek 5 MI E of Lincolnton, Lincoln County
Bridge Replacement in Congressional District 10**

Action: Addition to the Program

- 23. P.I. No. 0016532, SR 17 at Rock Creek 2.3 MI N of Washington, Wilkes County
Bridge Replacement in Congressional District 10**

Action: Addition to the Program

- 24. P.I. No. 0016533, SR 17 at Broad River Overflow 7.3 MI N of Tignall, Wilkes
County
Bridge Replacement in Congressional District 10**

Action: Addition to the Program

February 2019 CWP Board Revision

- 25. P.I. No. 0016506, I-75 at CR 179/Cedar Creek Road 5.2 MI NW of White, Bartow County
Bridge Replacement in Congressional District 11**

Action: Addition to the Program

- 26. P.I. No. 0016509, SR 108 at Shoal Creek 4.5 MI SW of Waleska, Cherokee County
Bridge Replacement in Congressional District 11**

Action: Addition to the Program

- 27. P.I. No. 0016511, I-59 at CR 104/Daniels Road 3 MI SW of Trenton, Dade County
Bridge Replacement in Congressional District 14**

Action: Addition to the Program

February 2019 CWP Board Revision

- 28. P.I. No. 0016512, I-24 at CR 140/Slygo Road 5 MI NE of New England, Dade County
Bridge Replacement in Congressional District 14**

Action: Addition to the Program

- 29. P.I. No. 0016528, SR 2/SR 61 at Sumac Creek 1.6 MI N of Crandall, Murray County
Bridge Replacement in Congressional District 14**

Action: Addition to the Program

- 30. P.I. No. 0016529, SR 61 at Perry Creek 6.3 MI N of Crandall, Murray County
Bridge Replacement in Congressional District 14**

Action: Addition to the Program