



# State Transportation Board Meeting

February 18, 2021



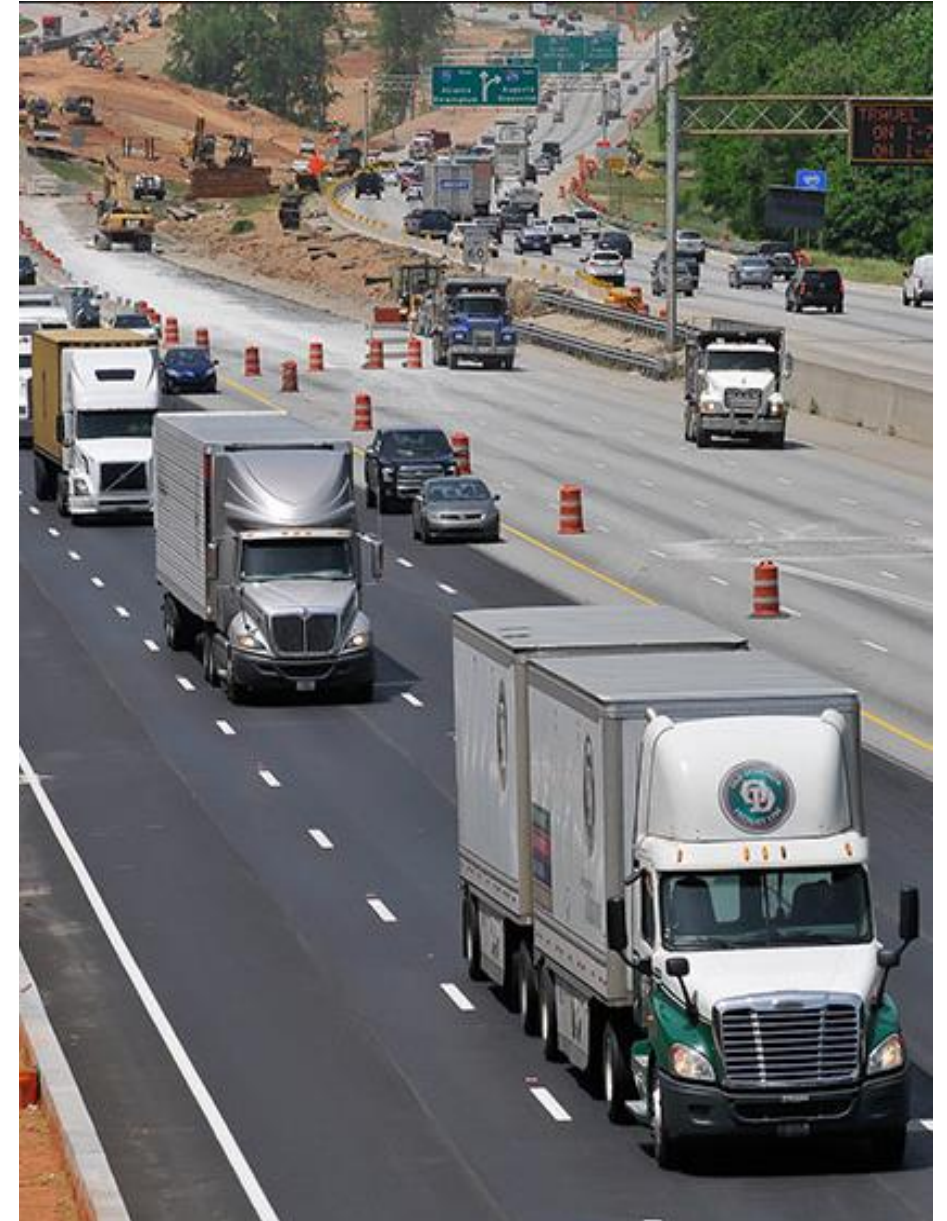
- ☐ Roll Call
- ☐ Invocation
- ☐ Pledge of Allegiance
- ☐ Welcome Remarks
- ☐ Approval of Minutes



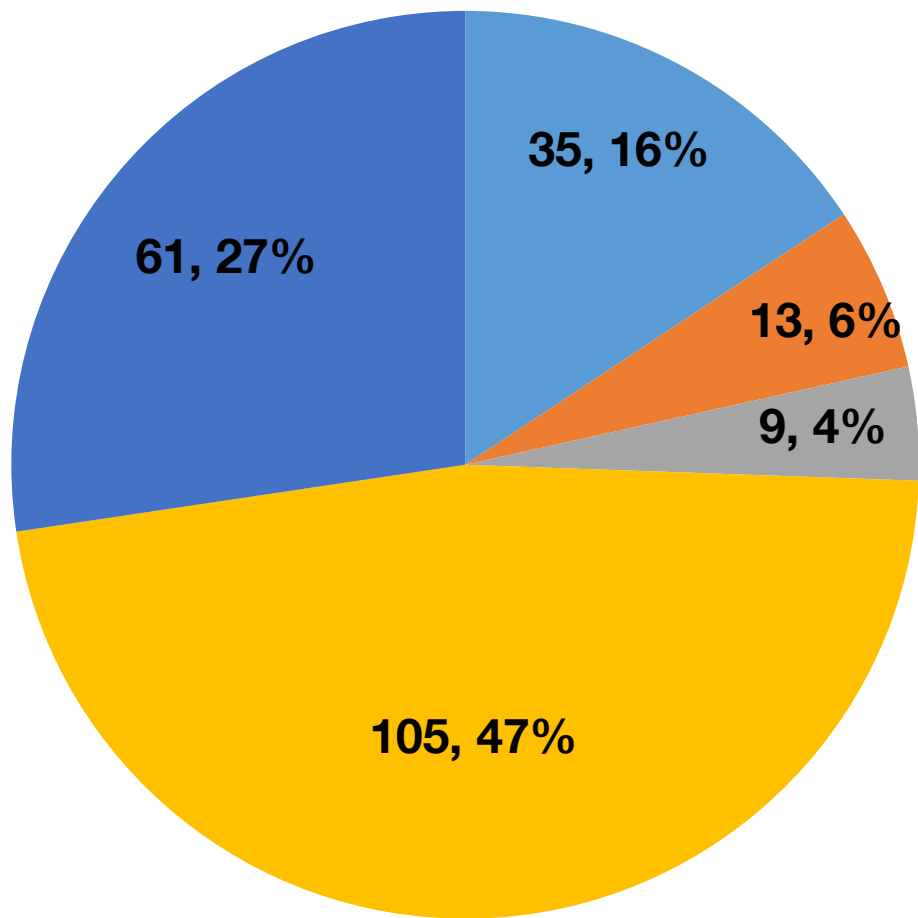


# March 2021 Letting Report

**Albert V. Shelby, III**  
**Director of Program Delivery**  
**February 18, 2021**



## Fiscal Year 2021 Letting Report Number of Projects Let in FY 2021 (Contractor Low Bid Award Data)



**Total = 223**

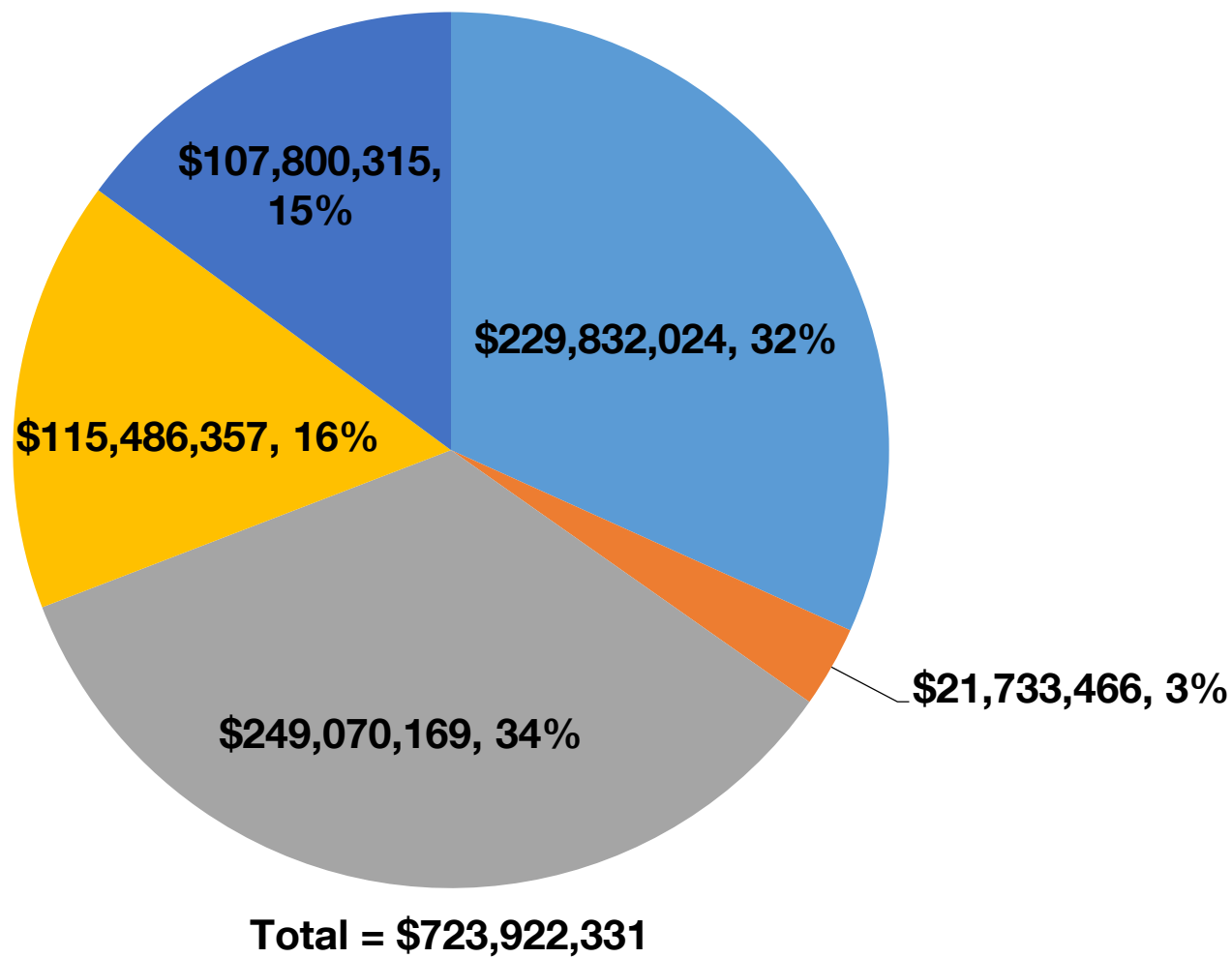
### GDOT & Local Lets

- Bridges
- Roads
- Enhancements
- Maintenance
- Safety

*As of February 4, 2021  
Source Bidding Administration*



## Fiscal Year 2021 Letting Report Dollar Amount of Projects Let in FY 2021 (Contractor Low Bid Award Data)



### GDOT & Local Lets

- Roads
- Enhancements
- Maintenance
- Bridges
- Safety

As of February 4, 2021  
Source Bidding Administration

# January 2021 Letting Results

Summary	Presented to GDOT Board (Includes Adjustments)	Low Bid (Awarded to Contractor)	Low Bid w/Adjustments (Total Project Obligation)
GDOT Let (Project Count)	43	41	41
GDOT Let (Dollars)	\$308,669,329	\$73,335,668	\$80,826,823
<b>Local Let</b>	<b>\$11,169,298</b>	<b>NA</b>	<b>NA</b>

\*Low Bid Award Amount includes the Deferred and Awarded projects.  
Does not include Engineering and Inspection, Utilities, Liquid AC, Incentives, LMIG and Rejected projects.

As of February 4, 2021  
Source Bidding Administration

# **GDOT and Local Let Projects**

## **March 2021 Letting**

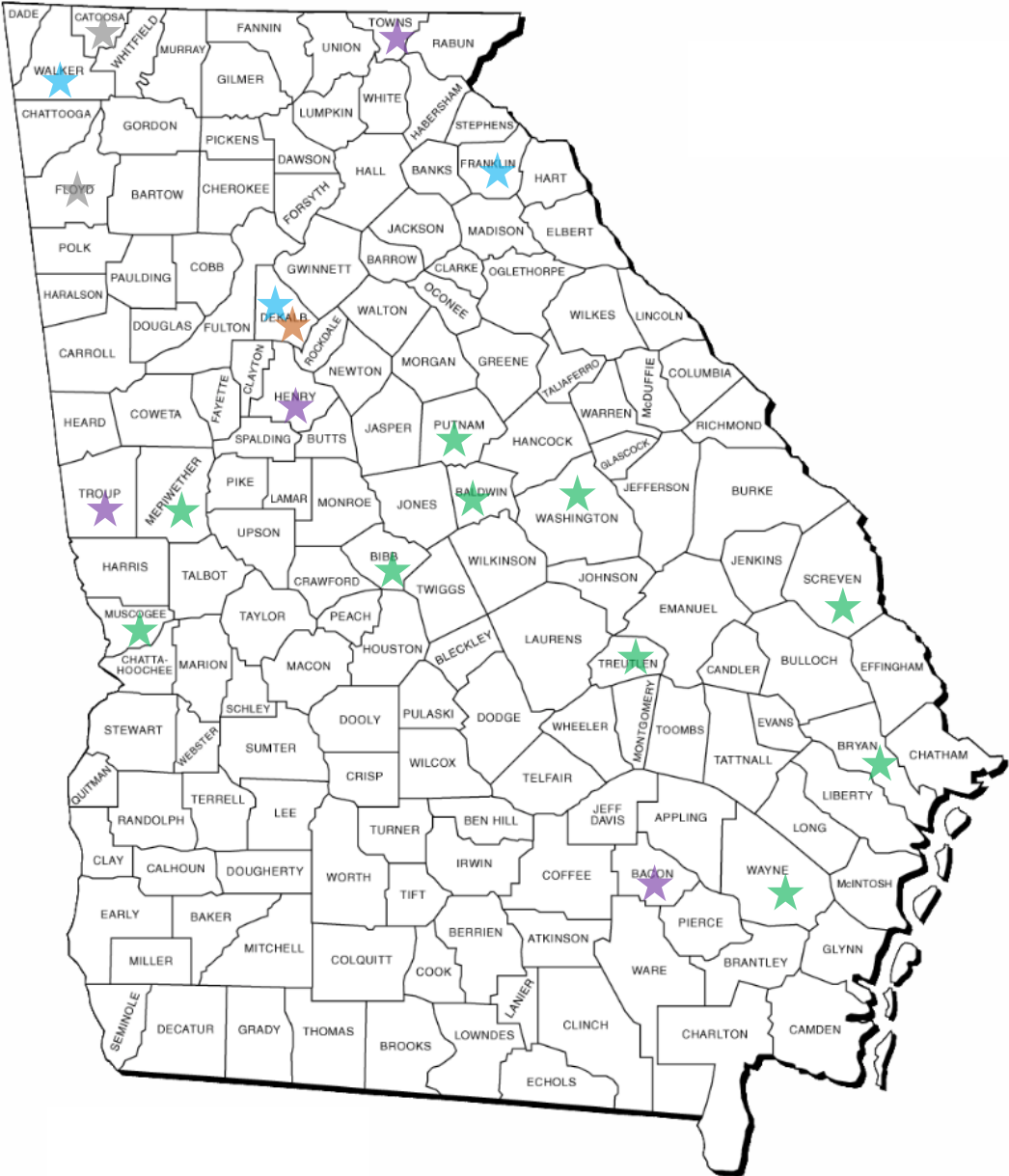
## GDOT and Local Let Projects March 2021 Letting

Project ID	Description	Primary County	Primary Work Type	Congressional District	Project Let By	Project Sponsor
0016913	CR 325/CS 625 @ 1 LOC - OFF-SYSTEM SAFETY IMPROVEMENTS-HRRR	Bacon	Shoulder Work	001	DOT	GDOT
M006025	SR 23/US 301 FROM SR 38 TO 0.32 MI S OF ALTAMAHA RIVER	Wayne	Resurface & Maintenance	001	DOT	GDOT
M006026	SR 30/US 280 FROM CS 513/POPLAR STREET TO I-16	Bryan	Resurface & Maintenance	001	DOT	GDOT
M006027	SR 144 SPUR FROM SR 144 TO E OF CR 215/GRACE COURT DRIVE	Bryan	Resurface & Maintenance	001	DOT	GDOT
M006092	SR 22 SPUR FROM 0.23 MI W OF CR 2111/REESE ROAD TO SR 22	Muscogee	Resurface & Maintenance	002	DOT	GDOT
M006093	SR 247/US 41 FROM N OF SR 49 TO S OF SR 19	Bibb	Resurface & Maintenance	002, 008	DOT	GDOT
0014089	I-185 FROM SR 1/US 27 TO I-85	Troup	Signing	003	DOT	GDOT
M005261	SR 194 FROM SR 18 TO SR 41	Meriwether	Resurface & Maintenance	003	DOT	GDOT
0017129	I-285 @ SR 12; @ REDWING CIRCLE & @ GLENWOOD RD	DeKalb	Bridges	004	DOT	GDOT
0013686	SR 155 @ CR 672/PANOLA ROAD	Henry	Roundabout	004, 013	DOT	GDOT

## GDOT and Local Let Projects March 2021 Letting

Project ID	Description	Primary County	Primary Work Type	Congressional District	Project Let By	Project Sponsor
0017430	ASHFORD-DUNWOODY ROAD EB RAMP @ I-285	DeKalb	Operational Improvement	006	LOC	Perimeter CID - DeKalb
0013938	SR 59 @ MIDDLE FORK BROAD RIVER 1.7 MI SW OF CARNESVILLE	Franklin	Bridges	009	DOT	GDOT
M005154	SR 24 FROM JEFFERSON COUNTY LINE TO SR 231	Washington	Resurface & Maintenance	010	DOT	GDOT
M006123	SR 24 FROM S OF CS 328/MARSHALL RD TO N OF CR 245/CAY DR	Baldwin	Resurface & Maintenance	010	DOT	GDOT
M006132	SR 44 FROM JONES COUNTY LINE TO SR 24	Putnam	Resurface & Maintenance	010	DOT	GDOT
M006053	SR 73 FROM N OF OGEECHEE CREEK TO SR 73 LOOP	Screven	Resurface & Maintenance	012	DOT	GDOT
M006122	I-16 FROM SR 29 TO SR 56	Treutlen	Shoulder Work	012	DOT	GDOT
0009045	REDMOND TRAIL ALONG NORFOLK SOUTHERN RAILROAD CORRIDOR	Floyd	TE-Bike/Ped Facility	014	LOC	Floyd County
0016845	CR 716/HOG JOWL RD @ SHAW BRANCH	Walker	Bridges	014	DOT	GDOT

# March 2021 Projects Throughout Georgia





## SR 30/US 280 FROM CS 513/POPLAR STREET TO I-16 Maintenance Project in Bryan County Congressional District 1





## SR 247/US 41 FROM N OF SR 49 TO S OF SR 19 Maintenance Project in Bibb County Congressional Districts 2 and 8





## SR 155 @ CR 672/PANOLA ROAD Roundabout Project in DeKalb and Henry Counties Congressional Districts 4 and 13





## SR 59 @ MIDDLE FORK BROAD RIVER 1.7 MI SW OF CARNESVILLE Bridge Replacement Project in Franklin County Congressional District 9



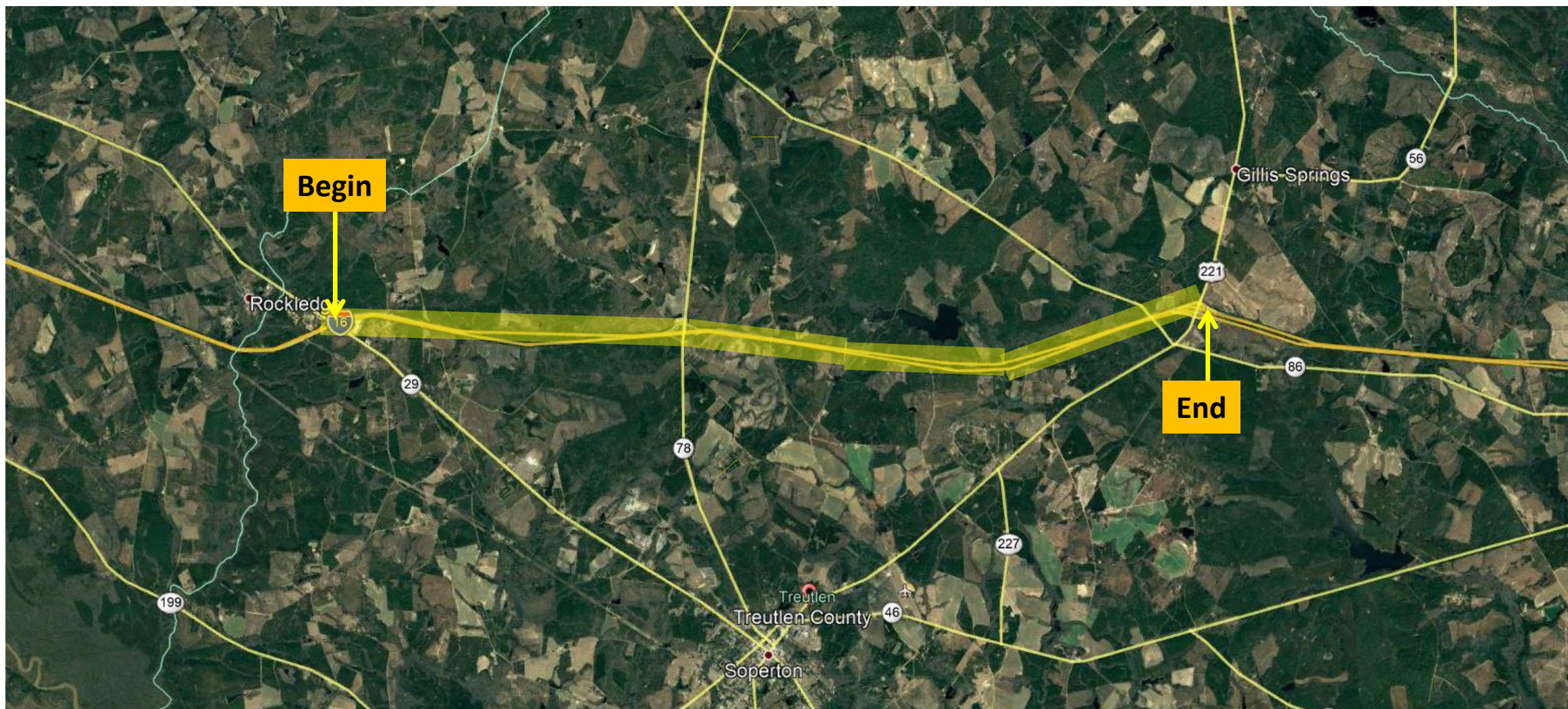


**SR 59 @ MIDDLE FORK BROAD RIVER 1.7 MI SW OF CARNESVILLE**  
**Bridge Replacement Project in Franklin County**  
**Congressional District 9 (Continued)**



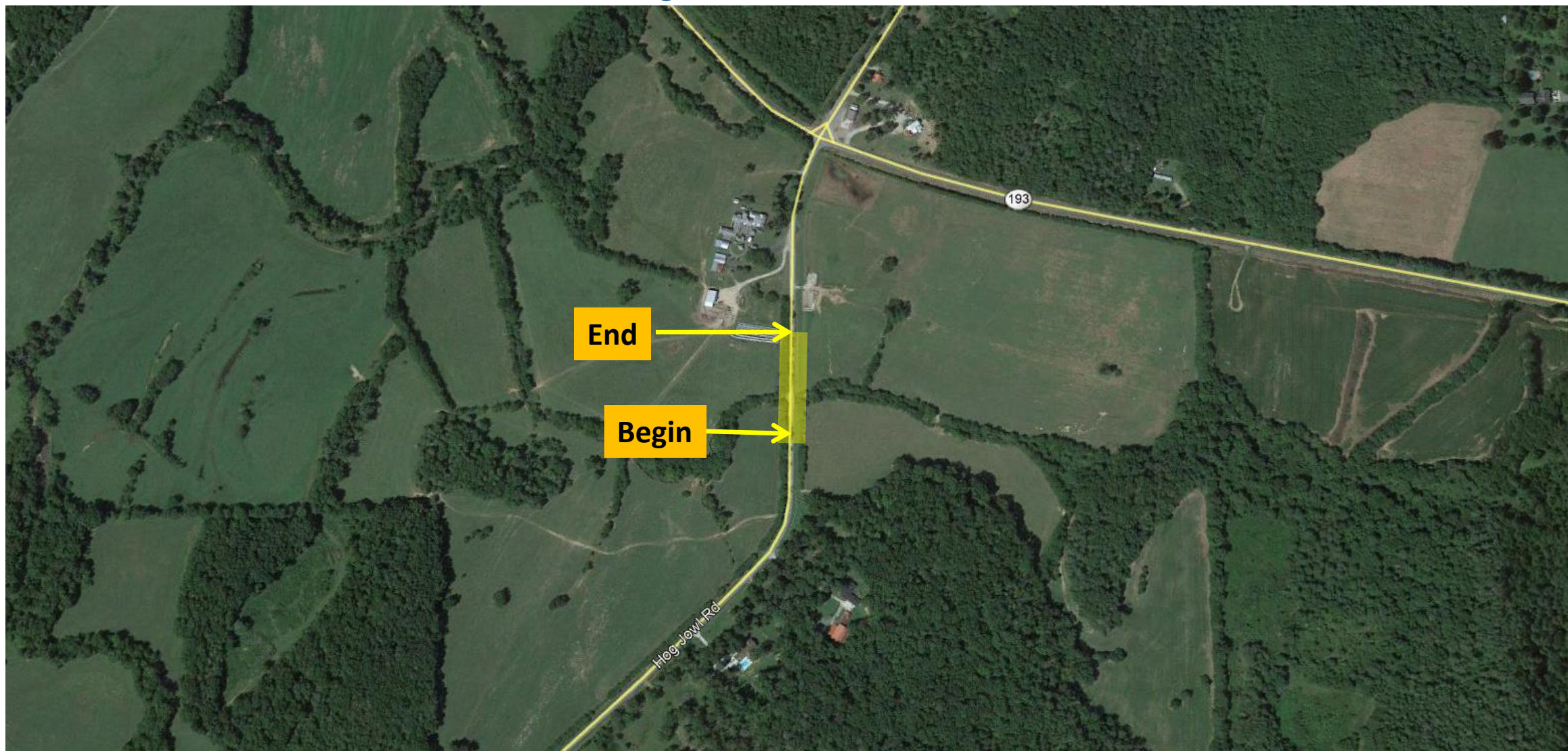


## I-16 FROM SR 29 TO SR 56 Concrete Rehabilitation Project in Treutlen County Congressional District 12





## CR 716/HOG JOWL RD @ SHAW BRANCH Bridge Replacement Project in Walker County Congressional District 14





**CR 716/HOG JOWL RD @ SHAW BRANCH**  
**Bridge Replacement Project in Walker County**  
**Congressional District 14 (Continued)**



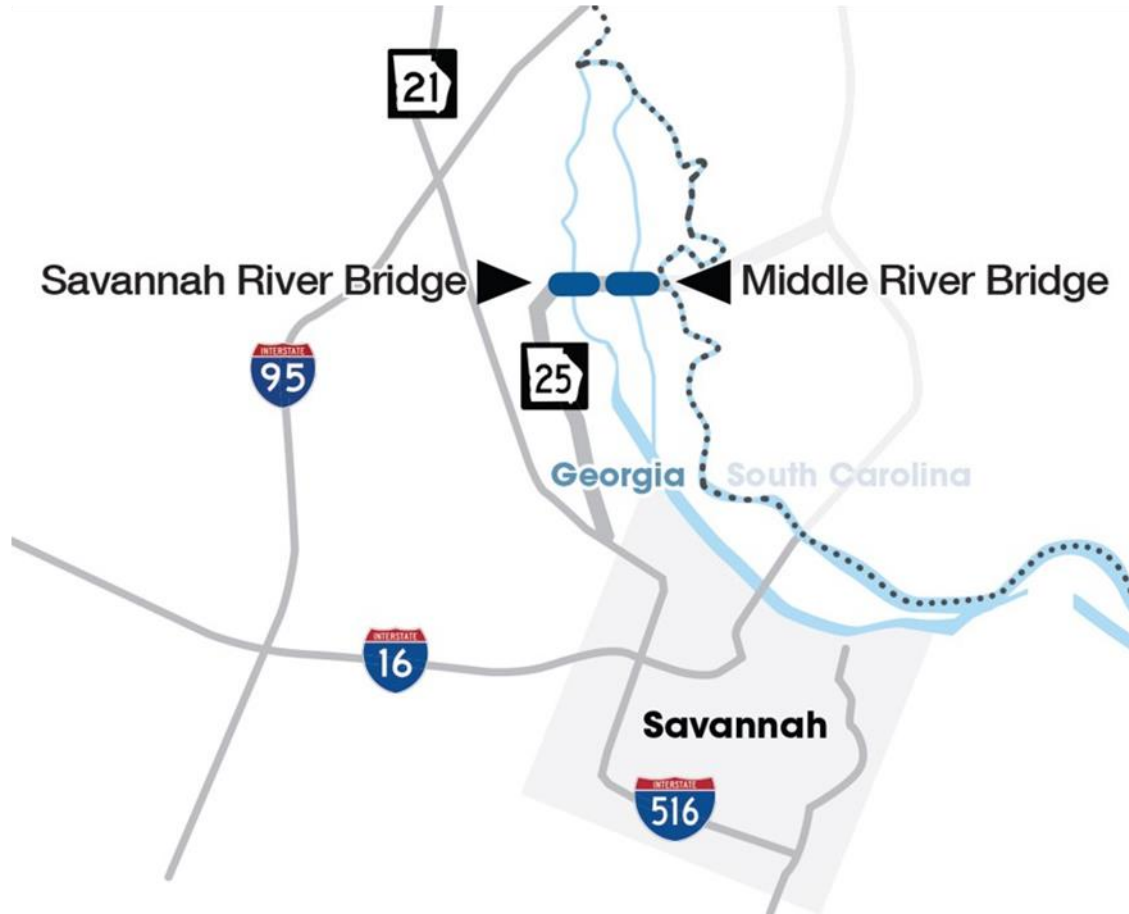


# **Additional Projects to be Advertised in March 2021 with a Future Let Date**

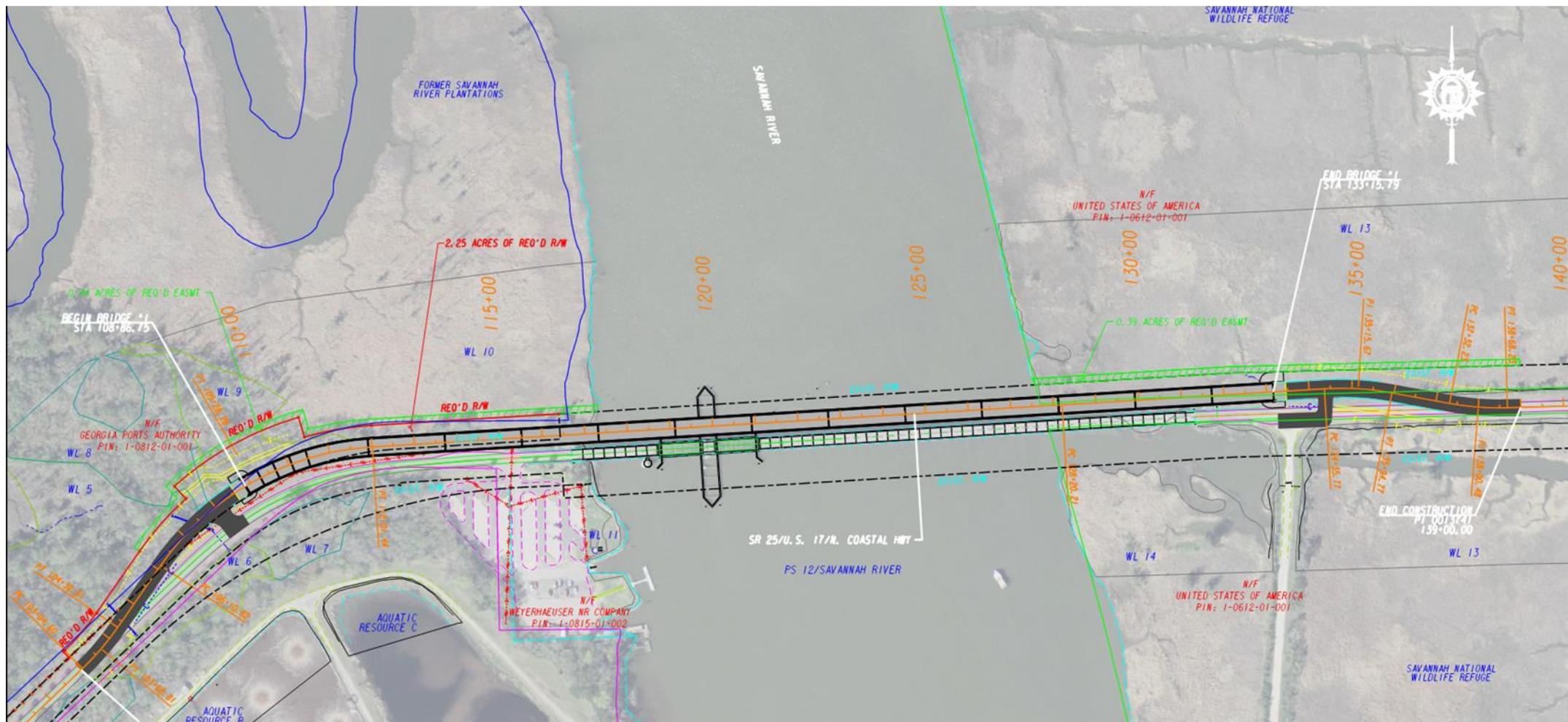
# GDOT Project Advertised only (not let) in October 2020

Project ID	Description	Primary County	Primary Work Type	Congressional District	Project Let By	Project Sponsor	Future Let Date
0013741	SR 25 @ SAVANNAH RIVER IN PORT WENTWORTH	Bridges	Chatham	001	DOT	GDOT	September 2021
0013742	SR 25 @ MIDDLE RIVER IN PORT WENTWORTH	Bridges	Chatham	001	DOT	GDOT	September 2021

**PI No. 0013741 & PI No. 0013742  
SR 25 @ Savannah and Middle Rivers  
Bridge Replacement Projects in Chatham County  
Congressional District 1**



# PI No. 0013741 SR 25 @ Savannah River Bridge Replacement Project in Chatham County Congressional District 1



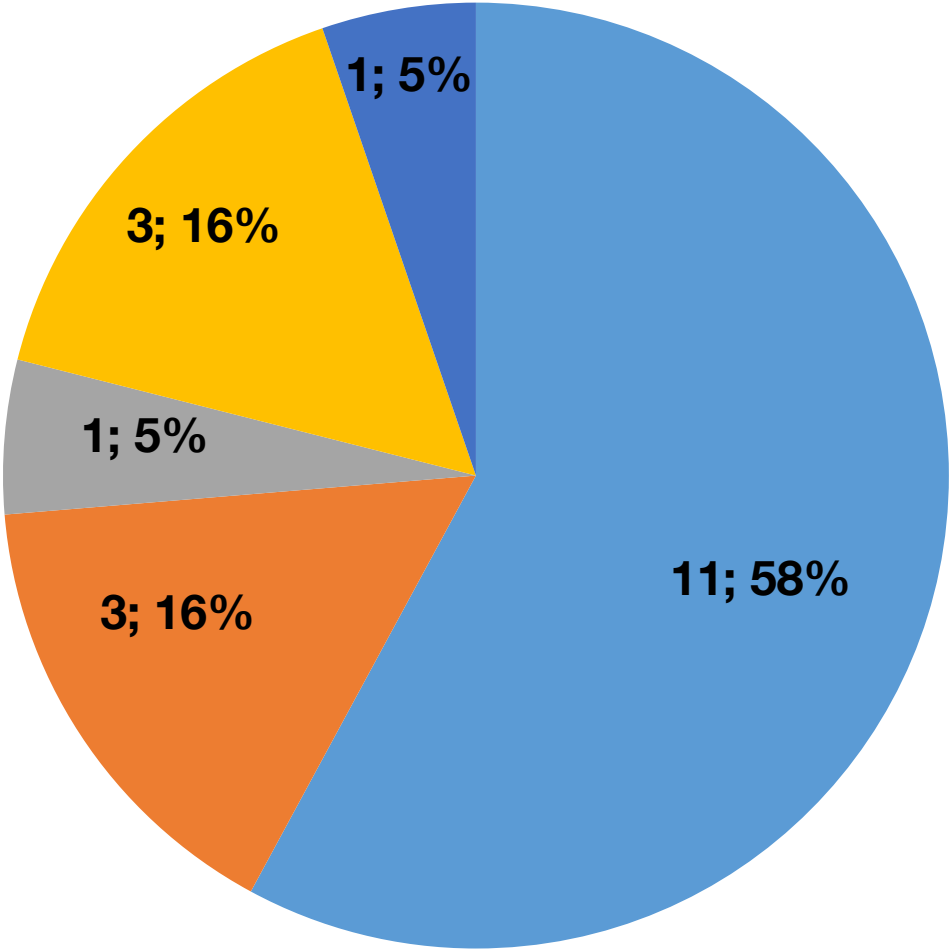


# PI No. 0013742 SR 25 @ Middle River Bridge Replacement Project in Chatham County Congressional District 1



# Fiscal Year 2021 Letting Report

Number of Projects  
March 2021 Letting



GDOT & Local Lets

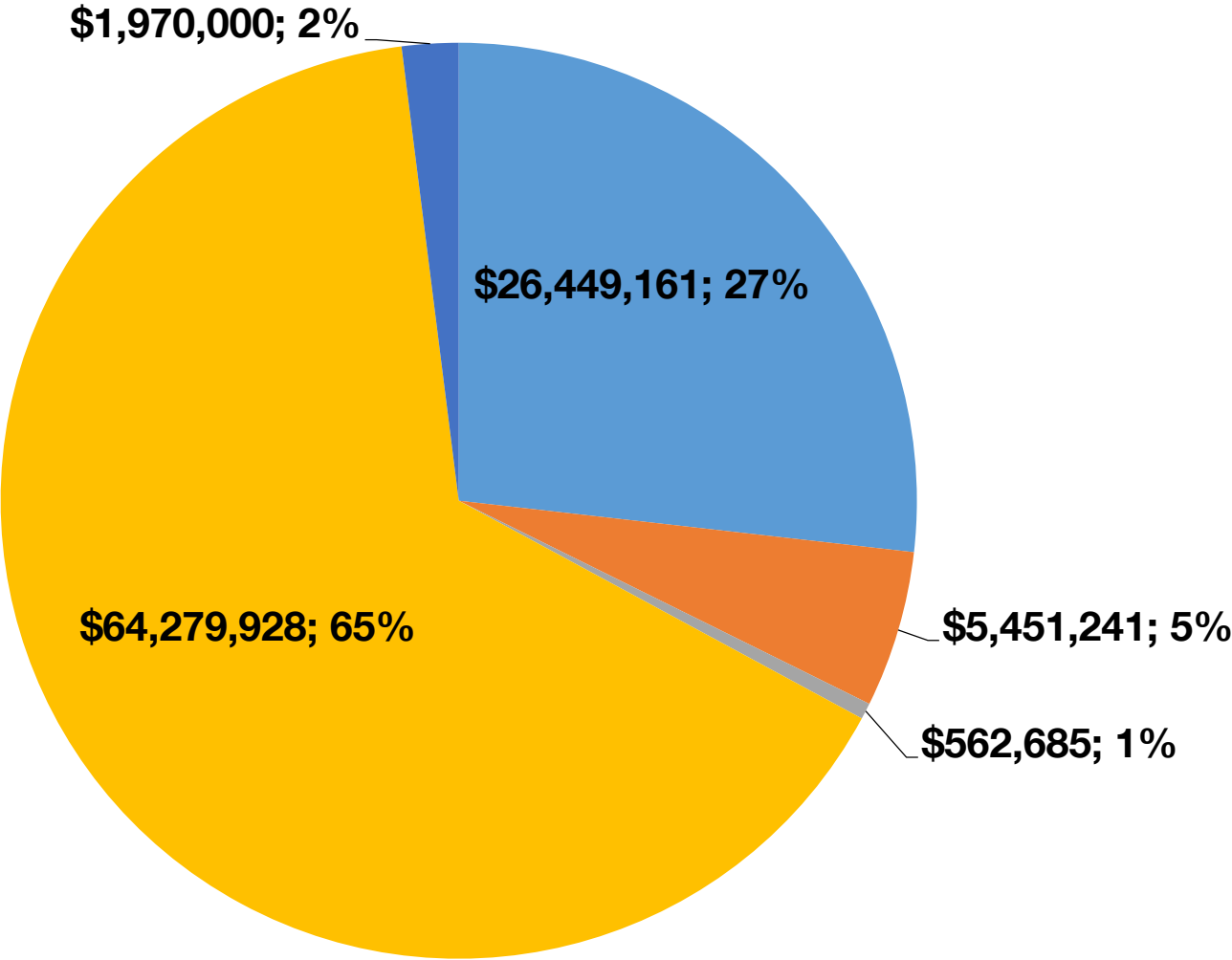


Total = 19

# Fiscal Year 2021 Letting Report

## Dollar Amount of Projects

### March 2021 Letting



#### GDOT & Local Lets



**Total = \$98,807,516**





# Commissioner's Report to the State Transportation Board

**Russell R. McMurry, P.E.**

**Commissioner**

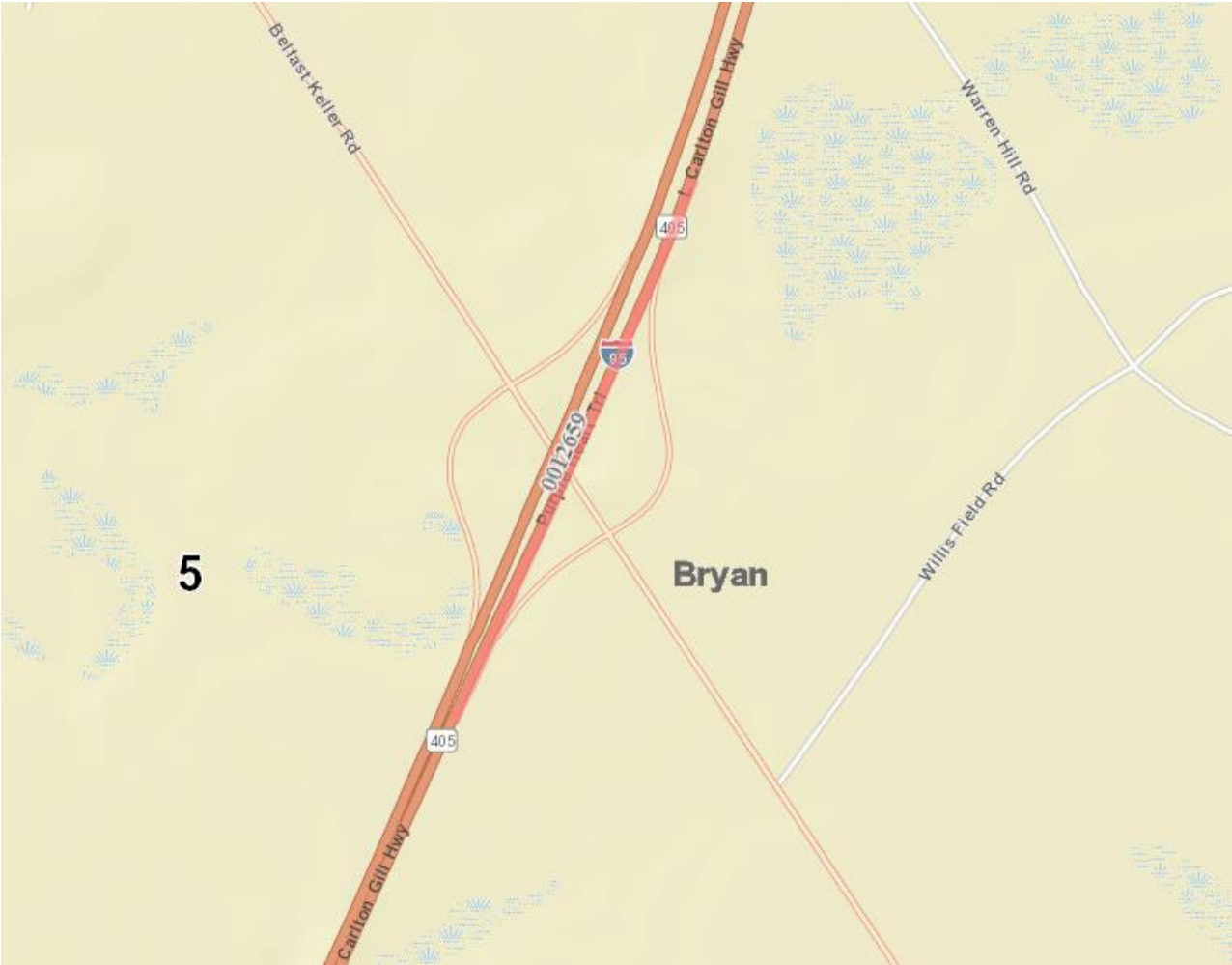
**February 18, 2021**

# Commissioner's Update: January 2021 Data

- ☐ Transportation Fund Collections
- ☐ Employment Data
- ☐ Professional Services Procurement Update
- ☐ Highlights of Projects Open to Traffic

# Construction of a new interchange

on I-95/SR 405 at Belfast Keller Road/CR 90 in Bryan Co.

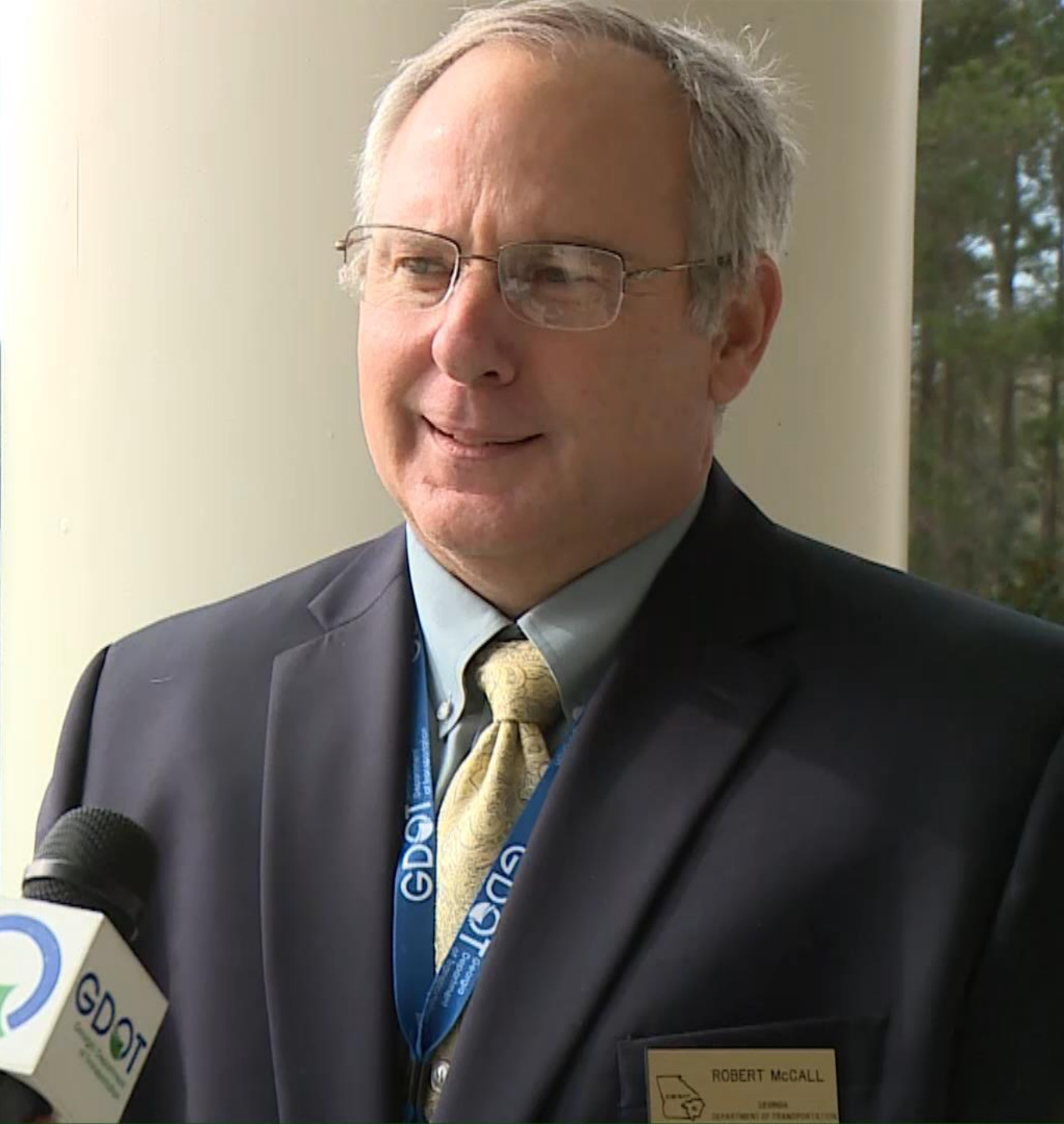




# Construction of a new interchange on I-95/SR 405 at Belfast Keller Road/CR 90 in Bryan Co.







# Construction of a bridge and approaches on Mt. Airy Road/CR 196 over Ossahatchie Creek in Harris County



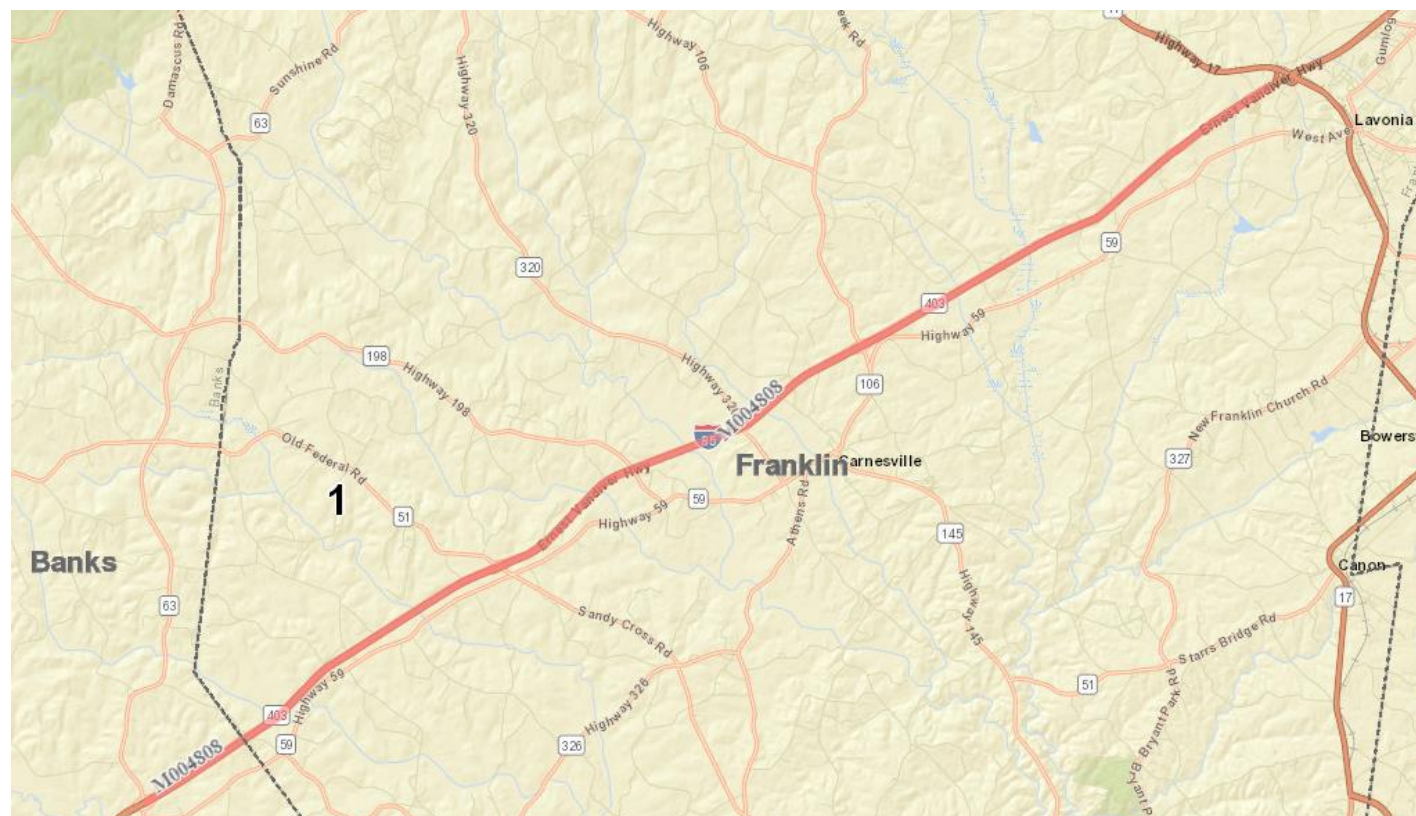


# Construction of a bridge and approaches on Mt. Airy Road/CR 196 over Ossahatchie Creek in Harris County





# Milling, plant mix resurfacing and shoulder rehabilitation on I-85/SR 403 in Banks & Franklin Counties





# Milling, plant mix resurfacing and shoulder rehabilitation on I-85/SR 403 in Banks & Franklin Counties





# South Calhoun Bypass Realignment

## on US 41/SR 3/SR 53 in Gordon County





# South Calhoun Bypass Realignment

on US 41/SR 3/SR 53 in Gordon County



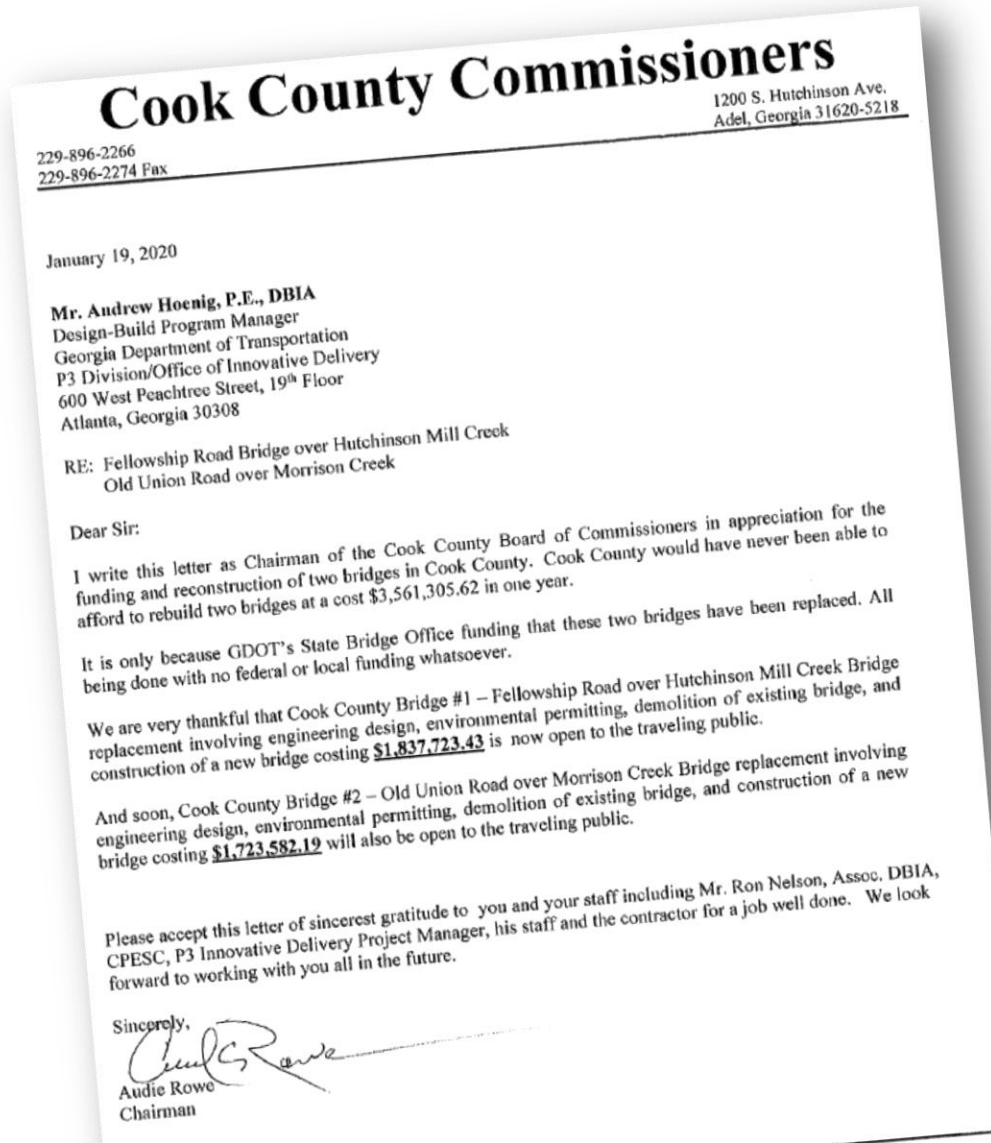


# People's Choice Award





# Cook County Expresses Gratitude for Bridge Projects



***“Cook County would have never been able to afford to rebuild two bridges at a cost of \$3.56M in one year. It is only because of GDOT’s State Bridge Office funding that these two bridges have been replaced. We are very thankful...”***

# Cook County Expresses Gratitude for Bridge Projects

Fellowship Road bridge over Hutchinson Mill Creek

AFTER

BEFORE





# Cook County Expresses Gratitude for Bridge Projects

## Old Union Road bridge over Morrison Creek

**BEFORE**



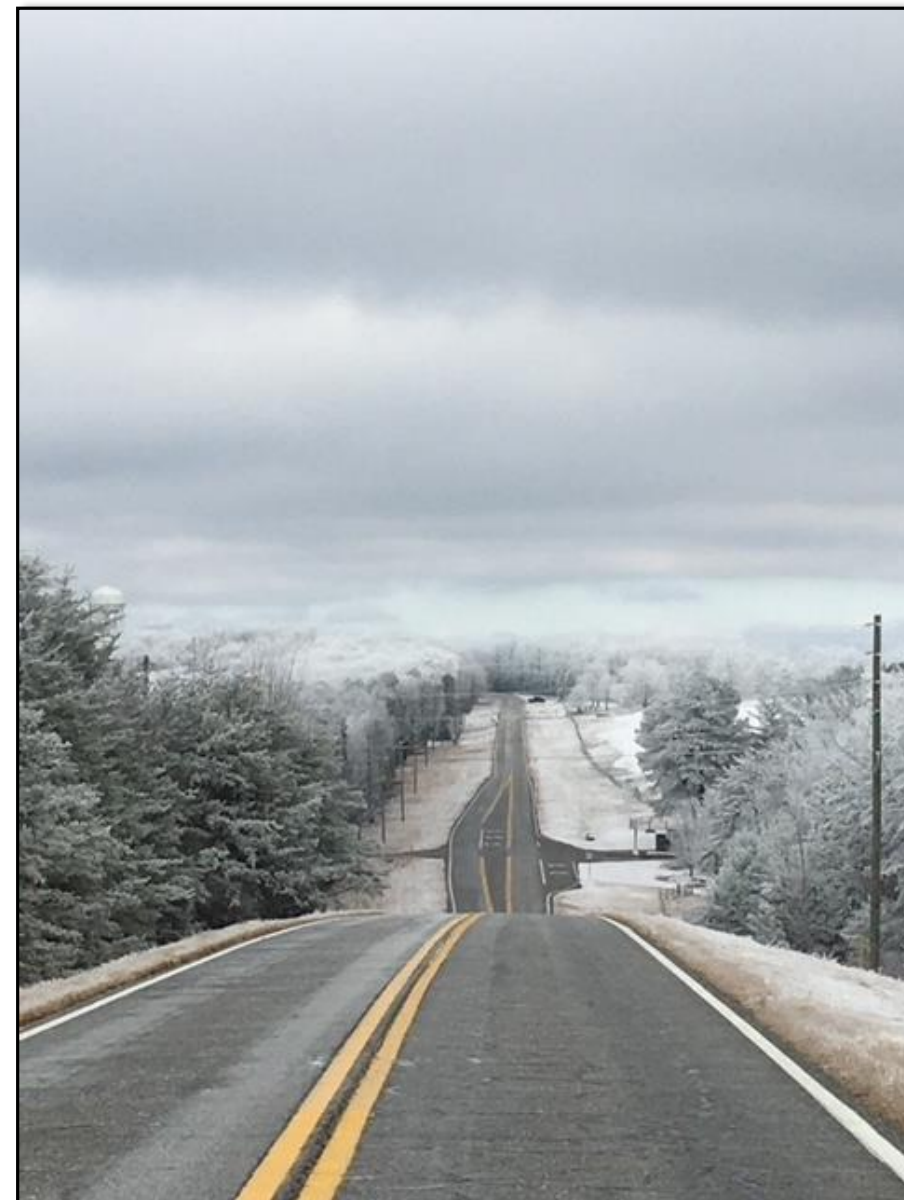
**AFTER**





# Winter Weather Response

Georgia DOT: Stay  
off the roads



# GA Alert Emergency Notification System



## Integrated Public Alert & Warning System | FEMA.gov

Jul 25, 2020 - The Integrated Public Alert & Warning System (IPAWS) is a national system for local alerting that provides authenticated emergency alert and life-saving information messaging to the public through mobile phones using Wireless Emergency Alerts, and to radio and television via the Emergency Alert System.

1. DOT Initiates Event – Requests WEA alert approval from EMA.

2. Website, Text Message, and IVR Systems Activated.

3. EMA approves WEA request.

6. DOT starts two-way comms and information sharing with travelers.

5. Travelers use website to register for the duration of the event.

4. WEA sent to travelers in focus area.





# VideoLog <http://pathweb.pathwayservices.com/ga/>


PathWeb

pathweb.pathwayservices.com/ga/sections/10477/locations/19385

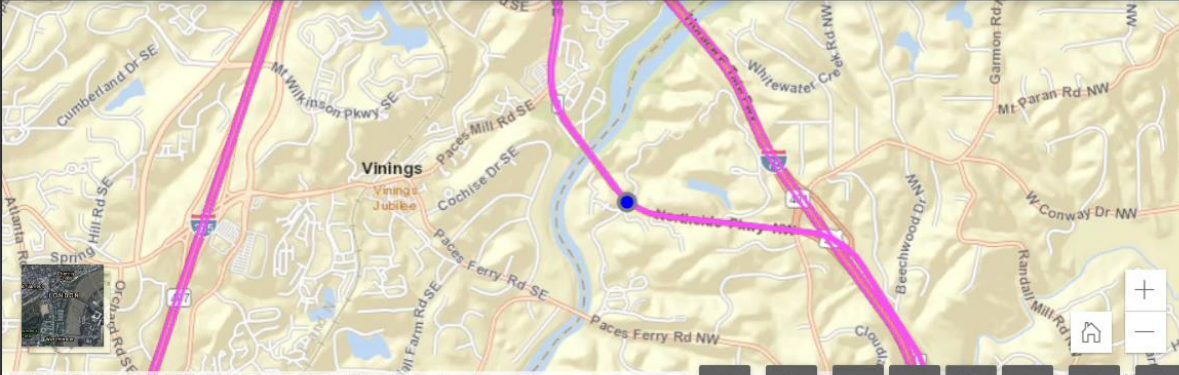
Apps GDOT EOC Links My Benefits | Team... Publication Service... Sign in to Concur |... Time-Lapse Constr... Sites-Tourneau-Site GEMA/HS Dispatch... GDOT\_DAAA\_Board... Charlestown Bosto...

Cycle 2020 Find Road Section

**Forward View**



County: Fulton - 121 Route Number: 00000300 Milepoint: 246.655 Direction: Decreasing Cross-Slope: -4.9% Grade: -0.5% Date Collected: 04/30/2020



Esri, HERE, Garmin, INCREMENT P, NGA, USGS | Pathway Services Inc.

**Pavement View**

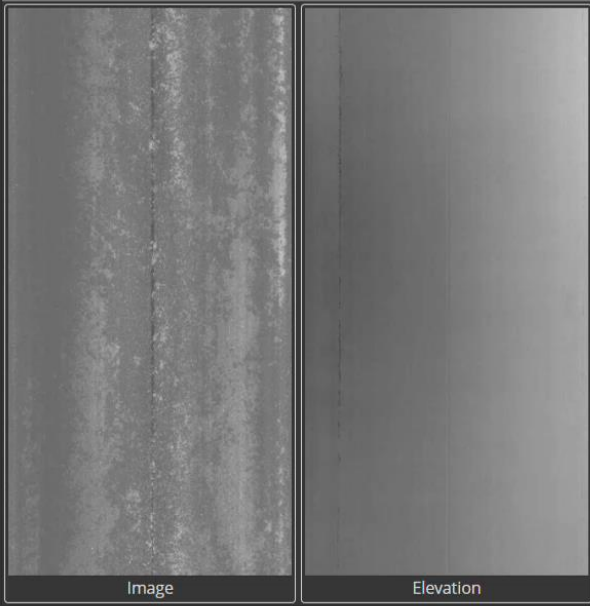
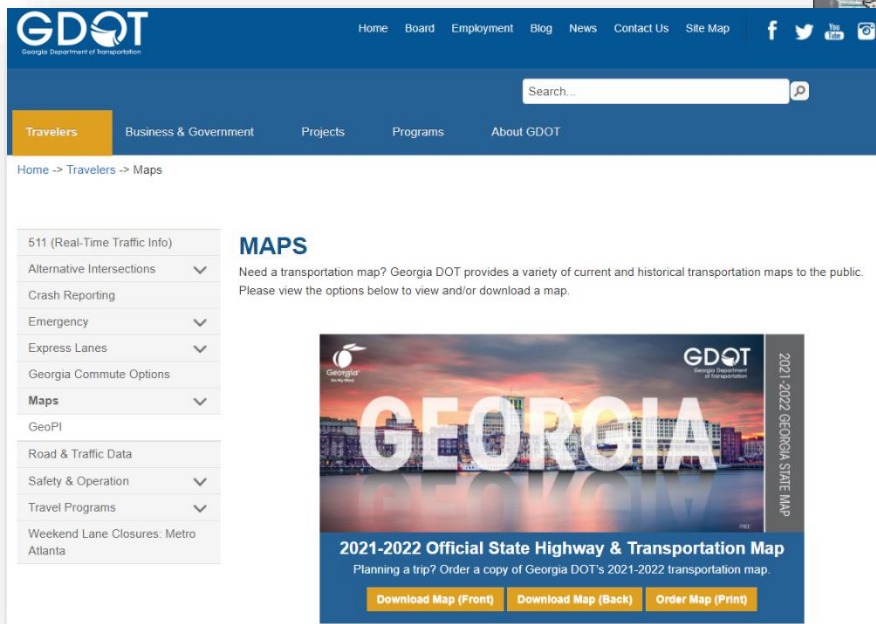


Image Elevation

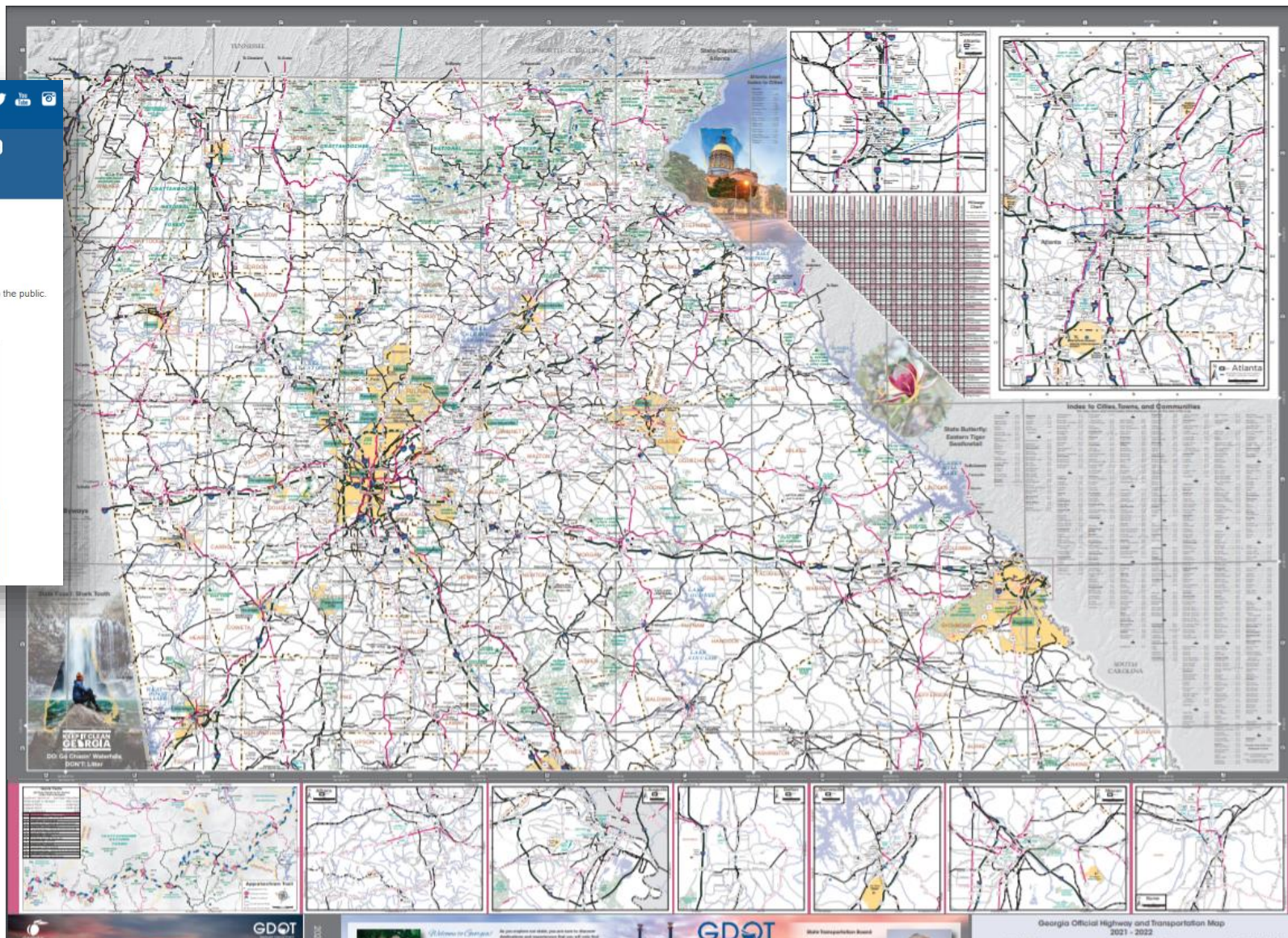


# Georgia's Official State Highway & Transportation Map



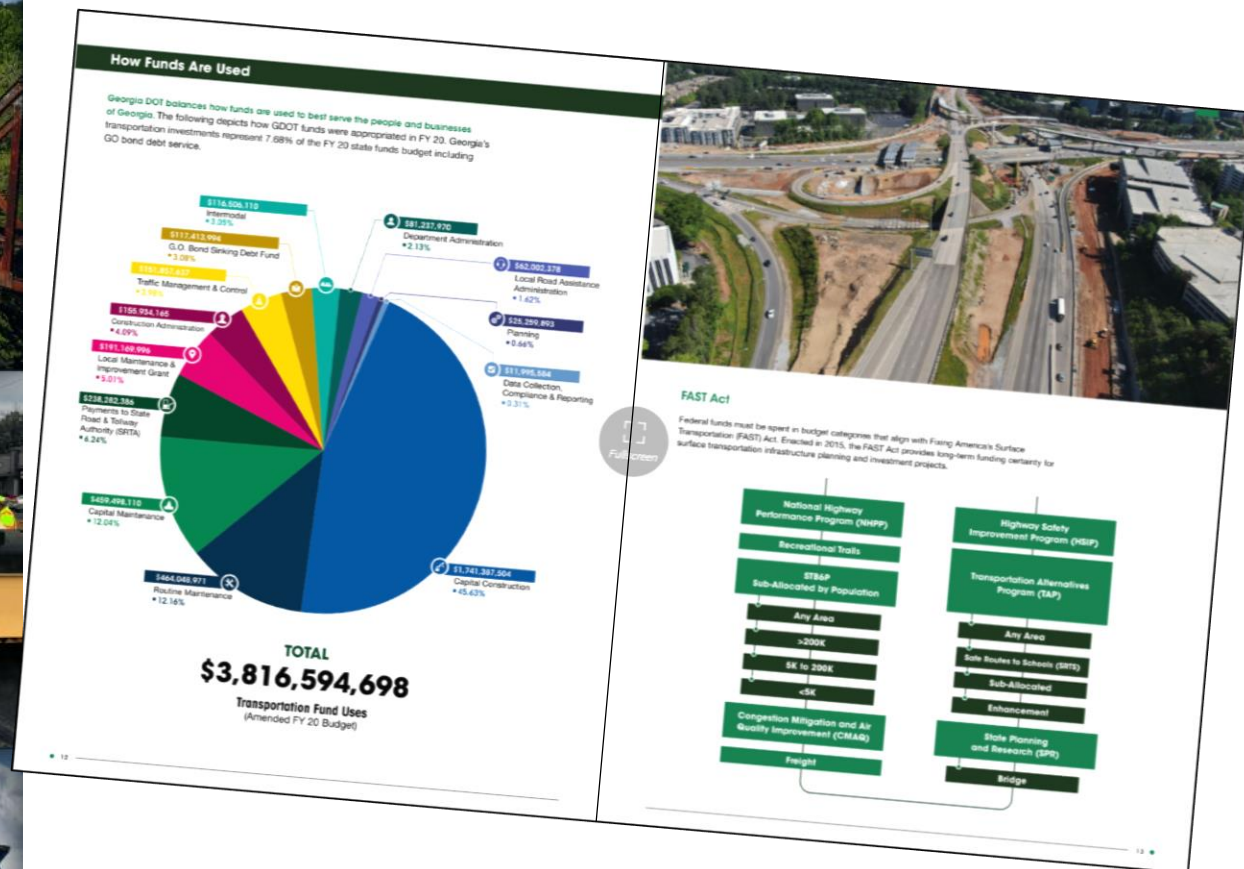
[www.dot.ga.gov/DS/Maps](http://www.dot.ga.gov/DS/Maps)

Email request for answer key to:  
[statemap@dot.ga.gov](mailto:statemap@dot.ga.gov)





# FY 2020 Accountability & Investment Report





# Legislative Update

**Joshua L. Waller**

**Director of Policy & Government Affairs**

**February 18, 2021**



# 2021 Legislative Session

- Session Calendar

2021 Session of the Georgia General Assembly

January						
					1	2
3	4	5	6	7	8	9
10	11	12	13	14	15	16
17	18	19	20	21	22	23
24	25	26	27	28	29	30

Session Days **IN RED**

February						
31	9	10	11	12		6
7	13	14	15	16		13
14	17	18	19			20
21	20	21	22	23	24	27
28						

Crossover Day: **?????**

March/April						
	25					6
7	8	9	10	11	12	13
14	15	16	17	18	19	20
21	22	23	24	25	26	27
28	29	30	31	1	2	3

Sine Die: **?????**

- Legislative Highlights: Freight & Logistics; Truck Weights
- Legislative Horizon



# Amended FY 2021 & FY 22 Budget

**Angela Whitworth**

**Treasurer**

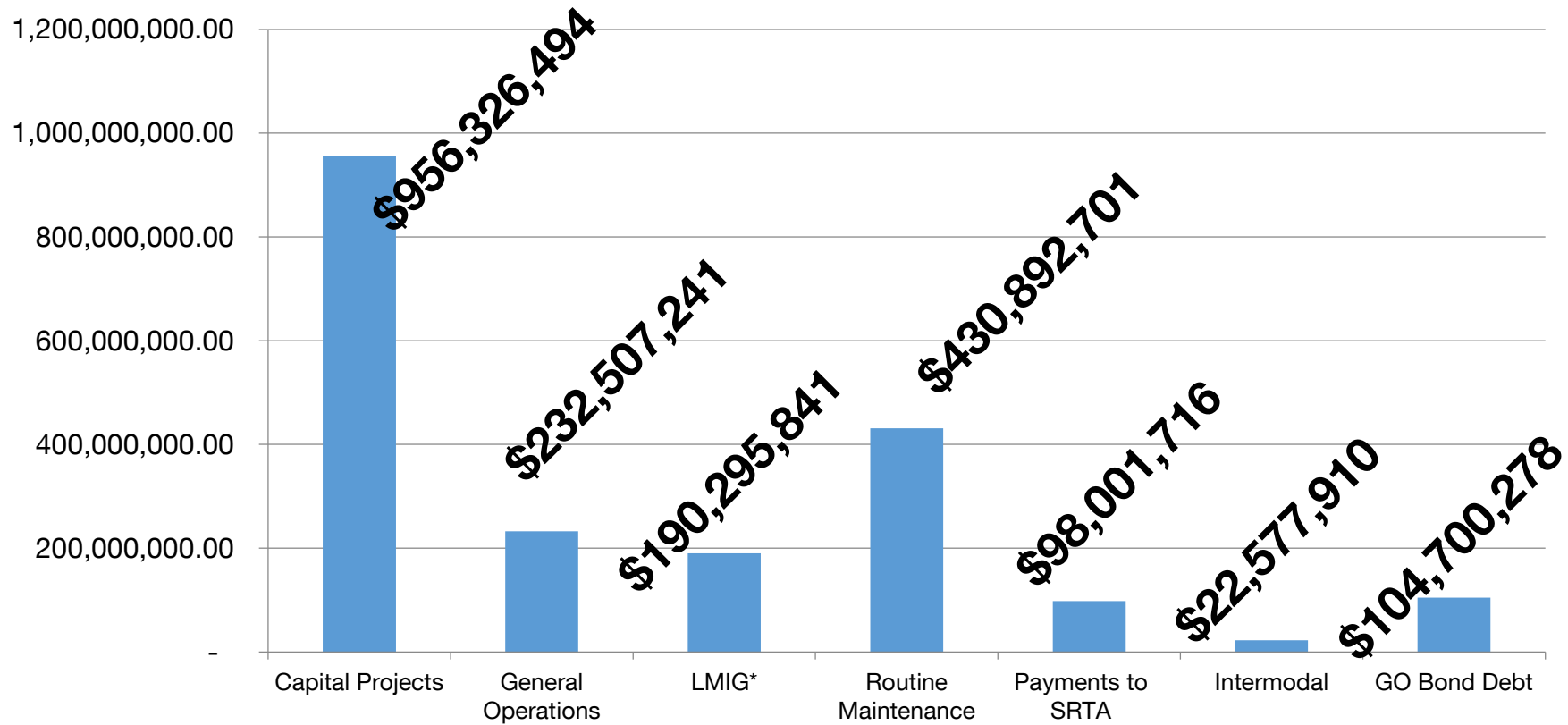
**February 18, 2021**



## FY 2021 Amended Revenue Comparison

	FY 21 Base	Change	AFY 21
Excise:	\$1,743,839,358	\$159,119,054	\$1,902,958,412
Non-Excise:			
	\$110,510,494	\$34,988,185	\$145,498,679
ATL	(\$12,824,445)	\$-	(\$12,824,445)
GRTA	(\$330,465)	\$-	(\$330,465)
Subtotal	\$97,355,584	\$34,988,185	\$132,343,769
GDOT			
Budget:	\$1,841,194,942	\$194,107,239	\$2,035,302,181

# FY 2021 Amended Budget



\* LMIG is 10% excise



## FY 2021 Amended Budget (As Passed)-Motor Fuel

Program (Motor Fuel)	FY 21 BASE	Change	AFY 21 Request
GO Bond Debt	\$110,518,413	(\$40,209,532)	\$70,308,881
Capital Construction	\$739,944,680	\$144,907,557	\$884,852,237
Capital Maintenance	\$81,947,536	(\$14,819,740)	\$67,127,796
Construction Admin	\$99,502,720	\$5,500,000	\$105,002,720
Data Collections	\$2,831,687	\$-	\$2,831,687
Departmental Admin	\$68,793,125	\$3,500,000	\$72,293,125
LMIG	\$174,383,936	\$15,911,905	\$190,295,841
Local Roads	\$4,346,461	\$-	\$4,346,461
Planning	\$2,357,098	\$-	\$2,357,098
Routine Maintenance	\$395,742,701	\$35,150,000	\$430,892,701
Traffic Management	\$50,022,611	\$-	\$50,022,611
Payments to SRTA	\$13,448,390	\$9,178,864	\$22,627,254
<b>TOTAL</b>	<b>\$1,743,839,358</b>	<b>\$159,119,054</b>	<b>\$1,902,958,412</b>

## FY 2021 Amended Budget (As Passed)-Non-Excise (Fees and General Funds)

Program (Fees/SGF)	FY 21 BASE	Change	AFY 21 Request
GO Bond Debt	\$-	\$34,391,397	\$34,391,397
Intermodal	\$21,981,122	\$596,788	\$22,577,910
Payments to SRTA	\$75,374,462	\$-	\$75,374,462
<b>Total</b>	<b>\$97,355,584</b>	<b>\$34,988,185</b>	<b>\$132,343,769</b>



# FY 2021 Amended Budget (As Passed)-One Time Salary Supplement

Program	Number of Employees
Construction Admin	990
Departmental Admin	322
Data Collections	25
Intermodal	14
Planning	20
Routine Maintenance	1,624
Traffic Management	315
<b>Total</b>	<b>3,310</b>

## FY 2022 Revenue Comparison

	FY 21 Base	Change	FY 22
Excise:	\$1,743,839,358	\$216,197,599	\$1,960,036,957
Non-			
Excise:	\$110,510,494	\$19,489,506	\$130,000,000
ATL	(\$12,824,445)	\$12,824,445	\$-
GRTA	(\$330,465)	\$-	(\$330,465)
Subtotal:	\$97,355,584	\$32,313,951	\$129,669,535
Total:	\$1,841,194,942	\$248,511,550	\$2,089,706,492



# FY 2022 Budget Request-Motor Fuel

Program (Motor Fuel)	FY 21 BASE	Change	FY 22 Request
GO Bond Debt	\$110,518,413	\$15,296,504	\$125,814,917
Capital Construction	\$739,944,680	\$99,434,198	\$839,378,878
Capital Maintenance	\$81,947,536	\$45,382,254	\$127,329,790
Construction Admin	\$99,502,720	\$5,500,000	\$105,002,720
Data Collections	\$2,831,687	\$-	\$2,831,687
Departmental Admin	\$68,793,125	\$3,500,000	\$72,293,125
LMIG	\$174,383,936	\$21,619,760	\$196,003,696
Local Roads	\$4,346,461	\$-	\$4,346,461
Planning	\$2,357,098	\$-	\$2,357,098
Routine Maintenance	\$395,742,701	\$35,150,000	\$430,892,701
Traffic Management	\$50,022,611	\$-	\$50,022,611
Payments to SRTA	\$13,448,390	(\$9,685,117)	\$3,763,273
<b>TOTAL</b>	<b>\$1,743,839,358</b>	<b>\$216,197,599</b>	<b>\$1,960,036,957</b>

## FY 2022 Budget Request-Fees

Program (Fees/SGF)	FY 21 BASE	Change	FY 22 Request
GO Bond Debt	\$-	\$19,489,506	\$19,489,506
Payments to SRTA	\$75,374,462	\$-	\$75,374,462
Payments to ATL	\$-	\$12,824,445	\$12,824,445
Intermodal	\$21,981,122	\$-	\$21,981,122
<b>TOTAL</b>	<b>\$97,355,584</b>	<b>\$32,313,951</b>	<b>\$129,669,535</b>



# FY 2022 General Obligation Bonds

Roads and Bridges: \$100M

- 12 Bridge Replacements
- 4 Capital Road Projects

Short line Rail: \$10M

- Upgrade Short-lines to Class II Standard



# Practical Design at GDOT

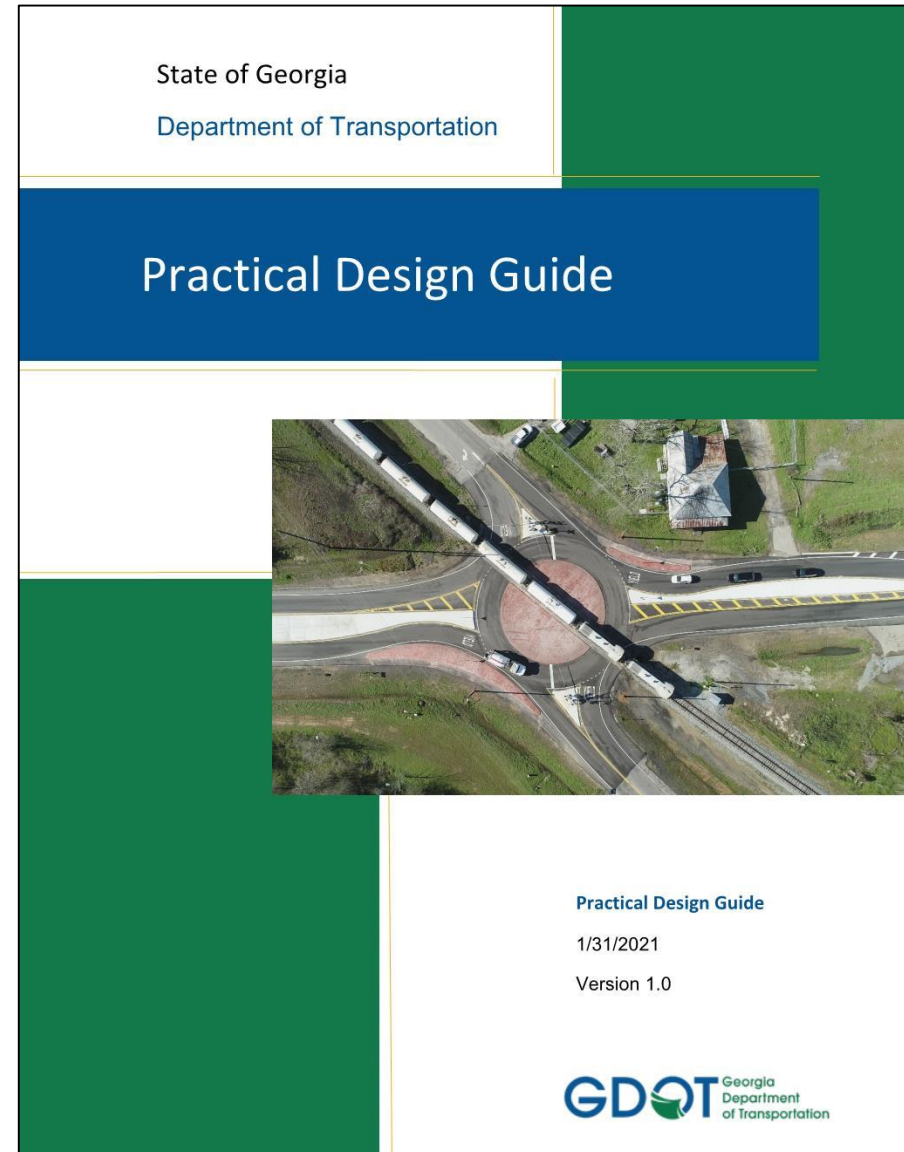
**C. Andy Casey, P.E.**  
**State Roadway Design Engineer**  
**February 18, 2021**



# Practical Design Guide

**“Any investment above the point of diminishing returns is an inefficient use of resources that would yield higher returns if invested elsewhere”**

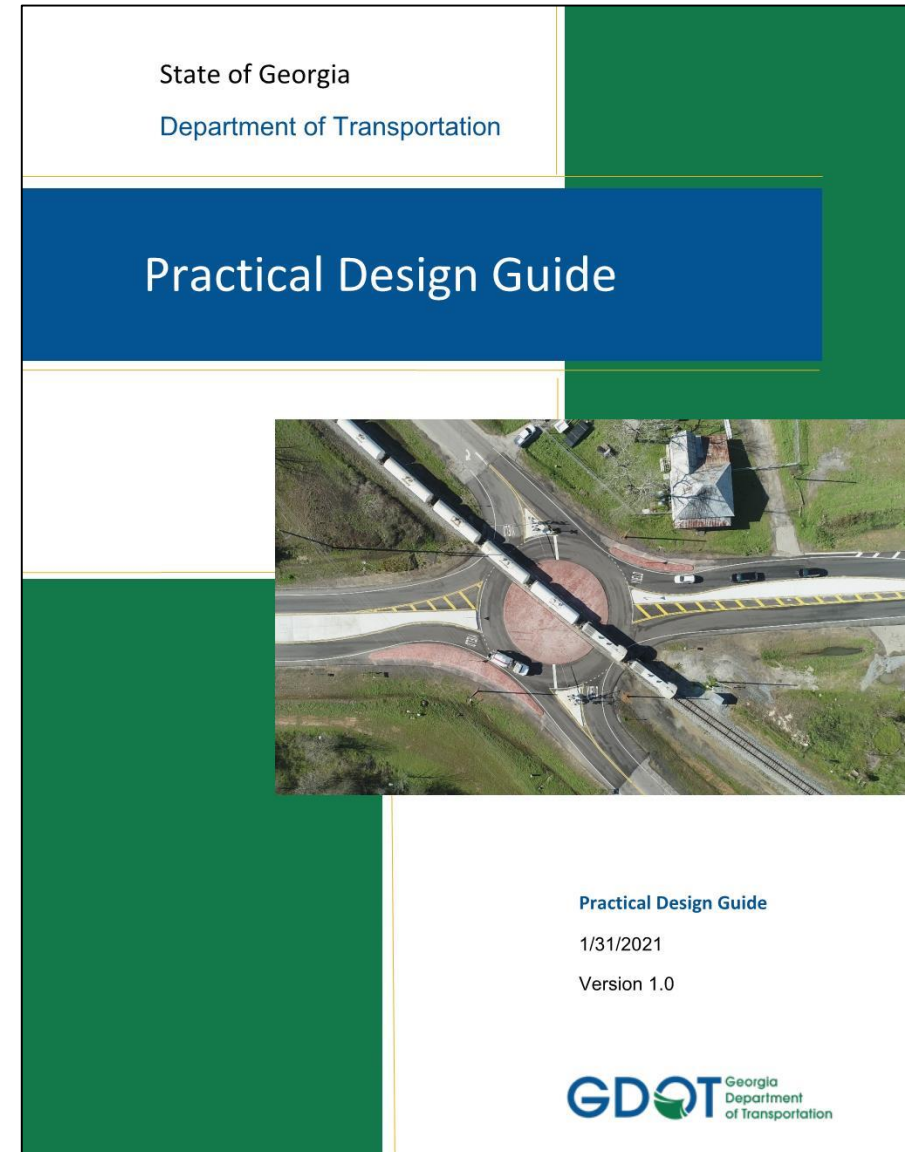
*- According to the law of diminishing returns*



# Practical Design Guide

## Table of Contents

1. Introduction
2. What is Practical Design?
3. Goals and Objectives
4. Georgia DOT's Approach to Practical Design
5. Case Studies
6. Suggested Questions to Ask





# Practical Design at GDOT

## GPTQ Practical Design Task Force

### Task Force Members

Andy Casey - Co-chair- GDOT Roadway Design

Allen Krivsky - Consultant Co-chair- H&L

Chris Rudd - GDOT Design Policy and Support

Denny Meier - WSP

Chris Parypinski - MAA, LLC

Nick Castronova - HNTB

Shrujal Amin - AECOM

# Why Practical Design?

## Maximize available funding while delivering transportation solutions

- Transportation industry faces challenges with establishing and maintaining efficient and effective processes and designs.
- Processes and designs are focused on maximizing benefit to the statewide transportation SYSTEM instead of the single PROJECT.
- A culture of practical design should meet the goal to allow more system needs to be addressed by meeting individual project performance objectives for the least cost.

# Why Practical Design?

## Current GDOT Programs that utilize a practical design mindset/approach

- Value Engineering
- Low Impact Bridge Program (LIBP)
- Quick Response Program (QR)
- Resurfacing, Restoration, and Rehabilitation (3R)
- Off-system Safety Program
- Transportation Improvement Act (TIA)



# Case Study #1

## SR 219/River Road at Schley Creek Bridge Replacement

### Geometric Design

#### **Initial Design/Recommendation:**

The need and purpose of this project was to replace the deficient bridge structure. While the team investigated methods of meeting the project goals with minimal road construction, the initial design included improvements to crest vertical curves and increased shoulder widths, lengthening the project limits outside the required area to replace the bridge and meet the need and purpose.



# Case Study #1

## SR 219/River Road at Schley Creek Bridge Replacement

### Geometric Design

- The proposed improvements were reduced as the project enhanced existing substandard horizontal curves, variances for vertical stopping sight distance and maximum vertical grade were provided to reduce the length of the project outside that of the need and purpose.
- Reduced total project length by approximately 800-ft.
- Reduced total required right-of-way and permanent easement acreage by 50% and 70%, respectively





## Case Study #2

### SR 18 at SR 41/US 27 Alt Intersection Improvement

#### Recommendation:

- Install Roundabout
- Focus on meeting purpose and need
- Improve safety
- Reduce accidents





## Case Study #2

### SR 18 at SR 41/US 27 Alt Intersection Improvement

#### Practical Design Solution:

- Scaled down plan set
- Negotiated bid strategy
- Solicit 3 contractors
- Negotiated scope up to \$200,000
- Utilize GDOT maintenance forces for scope over \$200,000

**Construction Cost:** \$350,000



## Next Step: Promoting a Culture of Practical Design

- GDOT's Culture of Innovation & Collaboration
- Training Workshop
- Knowledge sharing to stimulate innovation
- Add more real GDOT examples and case studies in the next version



Georgia Department of Transportation

# **2021 Statewide Strategic Transportation Plan (SSTP) – 2050 Statewide Transportation Plan (SWTP)** *(Board Approval Request)* **& FY21-24 STIP Update**

**Jannine Miller**

**Director of Planning**

**February 18, 2021**



# Overview of the Statewide Strategic Transportation Plan

## 2021 SSTP & 2050 SWTP

### Purpose of the SSTP/SWTP

- ✓ indicate Governor's and Board's priorities for transportation investments and planning activities
- ✓ guide GDOT program and project decisions for new transportation investment with ~**\$71 billion** in projected revenue (*through 2050*)
- ✓ ensure ongoing alignment with established policies

Meets requirements in both state and federal law

*(including approval by Governor and State Transportation Board)*

Focus is on policy and programs rather than the project specifics

*(how much money to spend on bridges, not which bridges to spend on)*

## Key Features of the 2021 SSTP/2050 SWTP

- Alignment with **Governor's overall strategic goals for Georgia**
- **Performance-based investment strategy**
- Emphasis on **catalytic investments** and **innovation**
- Redirecting existing funds to new programs for **freight** and **rural priorities**
- Strategies to **advance GDOT's planning processes**
- Implemented a **new interoffice working group**

# Integrating the Department's Priorities

- Interoffice Working Group (IWG) implemented as enhancement for 2050 plan
- Status updates at key milestones and collaboration among GDOT Offices:

- » Planning
- » Transportation Data
- » Traffic Operations / Safety

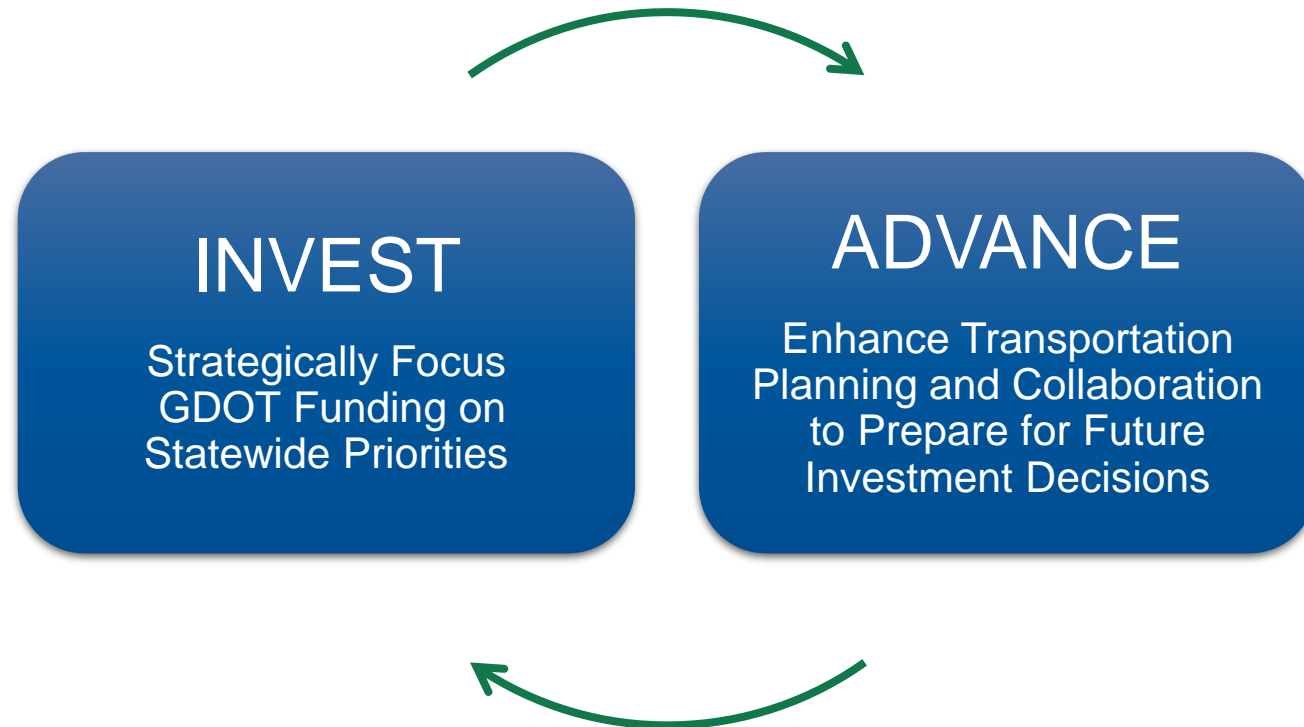
- » Intermodal
- » Communications
- » Performance-Based Management & Research

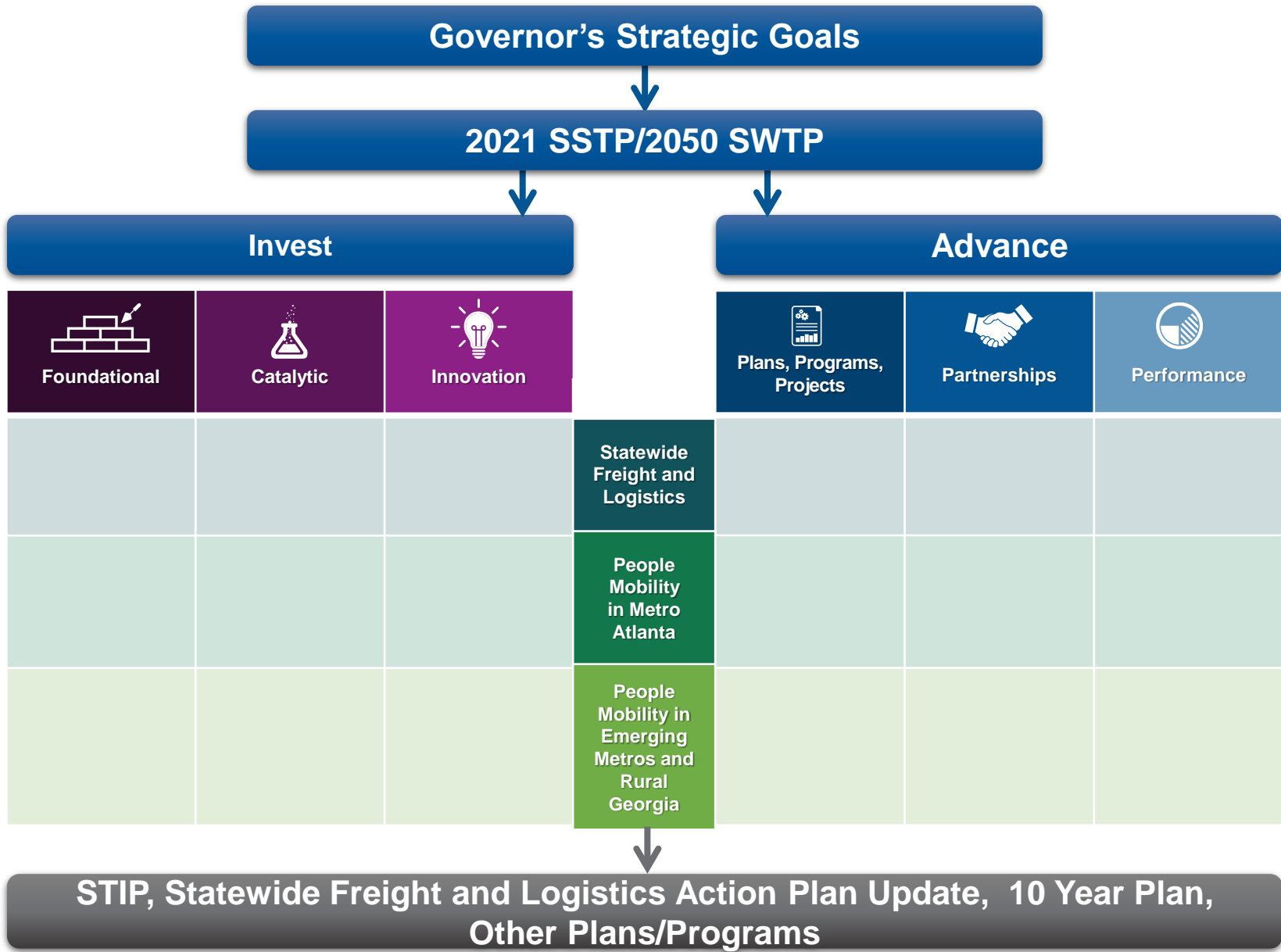
- » Bridge
- » Financial Management
- » Maintenance

- Supports consistent analysis and messaging on GDOT's strategic investment priorities
- Key mechanism to incorporate findings from other Departmental plans



## Two Elements of the Plan





## Statewide Freight and Logistics



- ✓ Georgia's transportation system moved a total of 597 million tons of goods valued at \$875 billion into, out of, and within the state\*
- ✓ 181,000 jobs in 15,000 Georgia businesses\*
- ✓ Logistics-enabled facilities accounted for 84% of private investment by companies that chose to locate new or expanded economic development sites in GA<sup>2</sup>

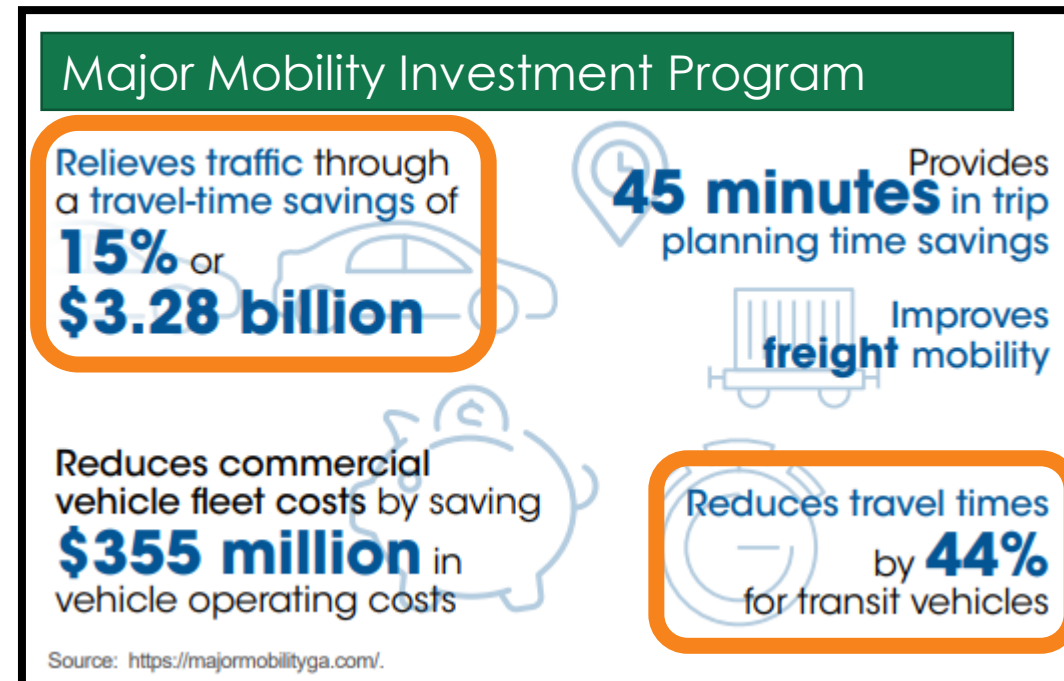
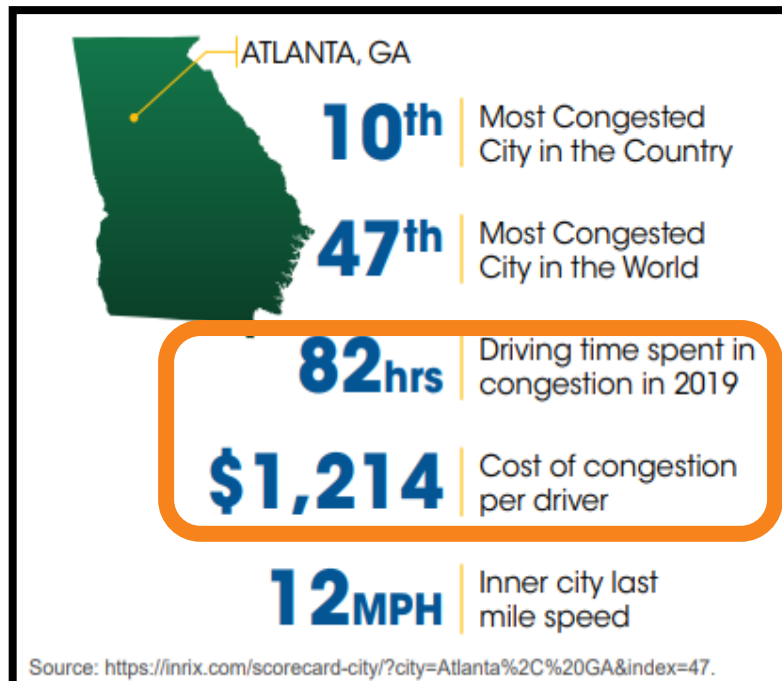
*More than half of all truck trips in Georgia pass through a rural area at some point of their journey.*



## People Mobility in Metro Atlanta



- 6 million residents: more than half of Georgia's population and 61% of Georgia's employees (~3.8 million jobs)
- Major employers in the region include 30 Fortune 1000 companies, generating more than \$348 billion in aggregate revenues<sup>1</sup>



## People Mobility in Emerging Metros and Rural Georgia



- Emerging metros<sup>3</sup> provide options for residents & businesses & serve as regional business centers for more than 20% of GA's population & employees
- Nearly ¼ of personal vehicle miles traveled in GA are on rural roadways, including urban residents traveling to outside their home metros
- Location of production & distribution  
*(agriculture, manufacturing)*

**20%** of Georgians live in rural areas but **54%** of the State's total lane-miles are in rural areas

Fatality rate per 100 million vehicle-miles traveled is 56% greater in rural areas

Rural: **Nearly 2.5**

Metro: **1.6**

## Preliminary Findings: Results from \$2.38 Billion Annual Investment

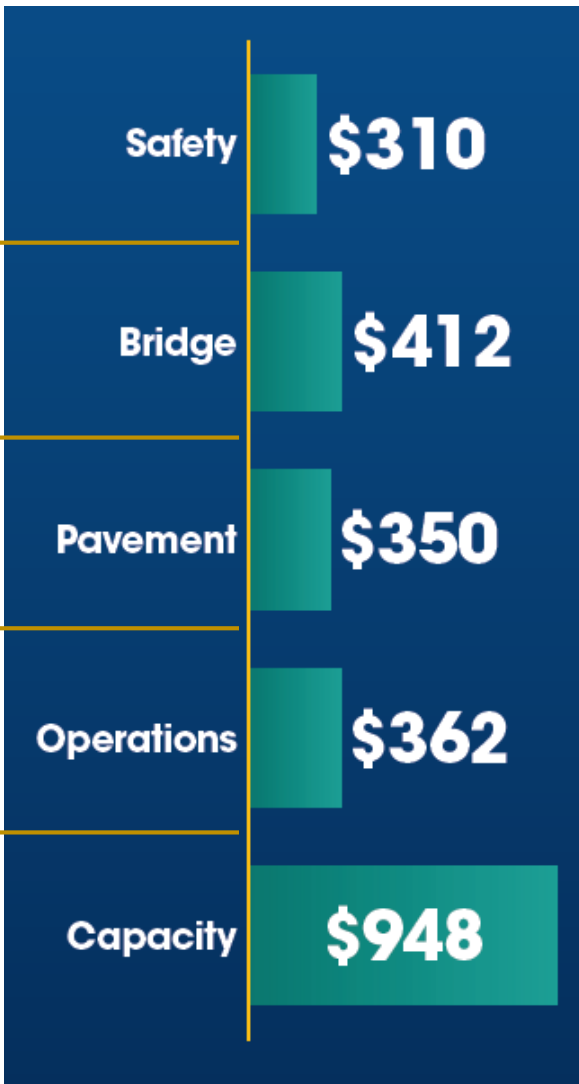
Could **reduce** the number of fatal and serious injury crashes by an **average of 82 each year** through 2050

Keeps ~90% of GDOT-owned bridges in good or fair condition in 2050

Keeps ~88% of GDOT-owned pavement in good or fair condition in 2050

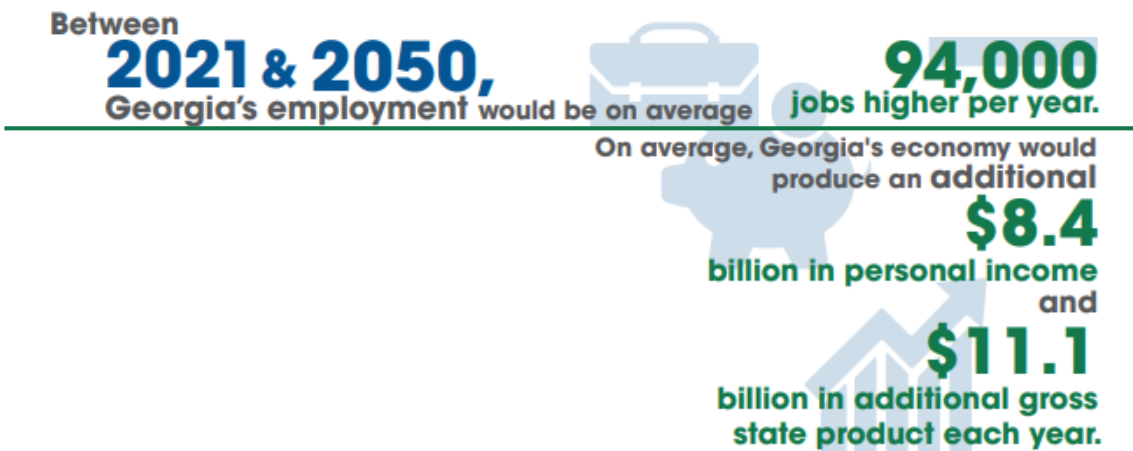
More than **10% decrease in weekly vehicle hours of delay** statewide in 2050




Cumulative 30-year **savings of 15.2 billion hours of travel time, \$425 billion in travel costs, and \$28 billion in vehicle operating costs** for Georgia residents, businesses, and visitors





# Estimated Benefits to Georgia’s Economy from Recommended Investment Plan



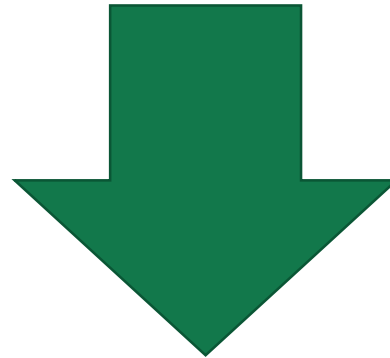
	 Statewide Freight and Logistics	 People Mobility in Metro Atlanta	 People Mobility in Emerging Metros and Rural Atlanta
Jobs	24,440	43,240	26,320
Personal Income (2019 dollars in Billions)	\$2.2	\$3.9	\$2.3
Gross State Product (2019 dollars in Billions)	\$2.9	\$5.1	\$3.1

## Next Step: Approve Plan

**February 11<sup>th</sup>** – Governor Kemp approved

**February 18<sup>th</sup>** – State Transportation Board's approval request

**February 26<sup>th</sup>** – Provide plan to Federal partners



### **SSTP's recommendations will guide future investment**

- ☐ Statewide Transportation Improvement Program (STIP)
- ☐ Decision-making on **freight infrastructure**
- ☐ 10-Year Plan and other transportation plans/programs
- ☐ Priorities for State of Georgia investments in **Metro Atlanta, emerging metros and rural Georgia**

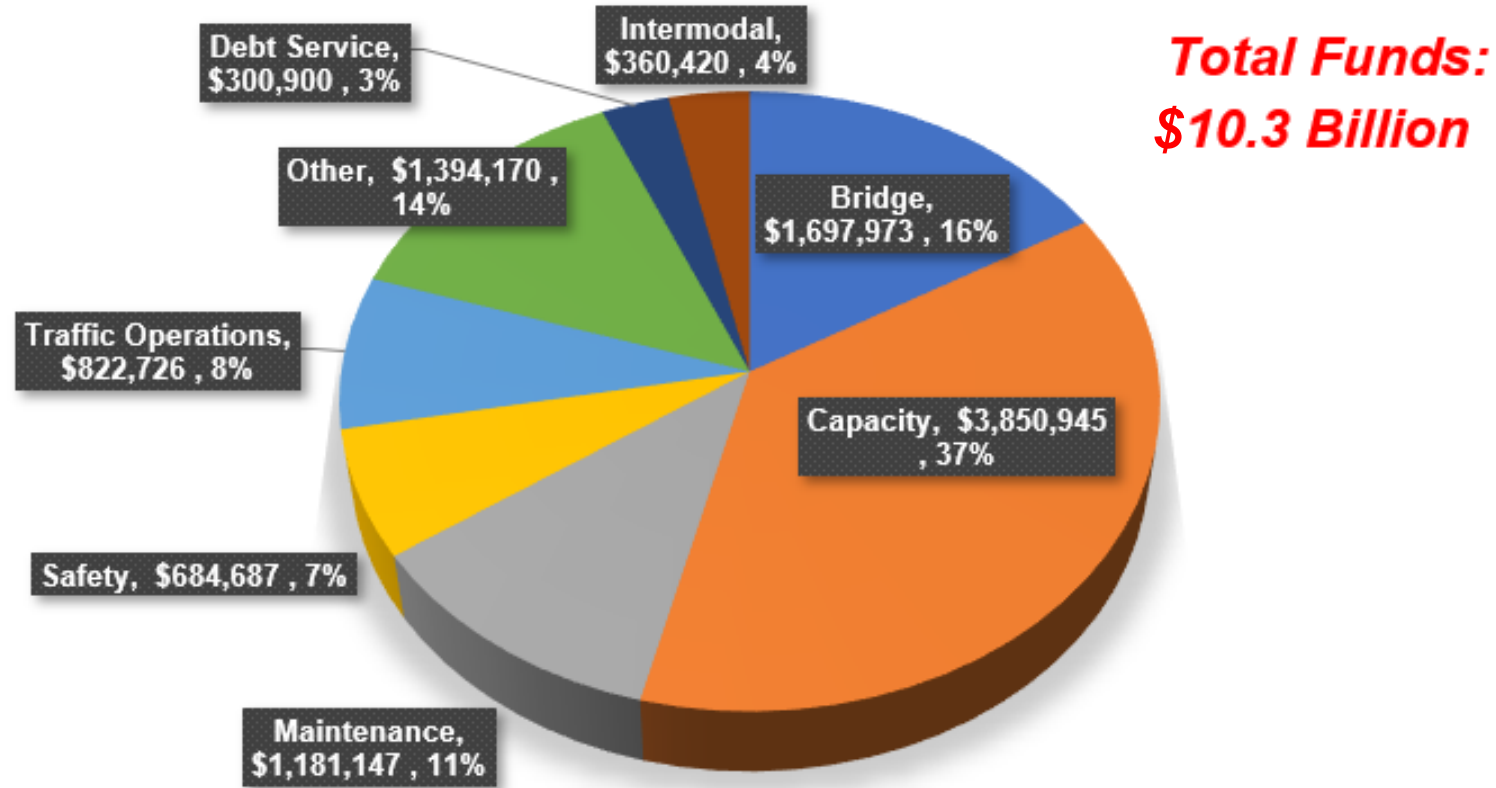
# **Request for Board Approval of the 2021 SSTP/ 2050 SWTP**



## SSTP Alignment with STIP

- List of deliverable project phases in 4-year timeframe
- Indicates Federal fund investments, consistent strategies in SSTP

**2021-2024 STIP Funds by Improvement Type**



# FY 21-24 DRAFT Statewide Transportation Improvement Program (STIP)

- Public outreach: month of March 2021
  - › *virtual public involvement for the first time for a STIP update*
- Will update Board on draft STIP at March 18<sup>th</sup> meeting
- Will request board approval of STIP at April 15<sup>th</sup> meeting

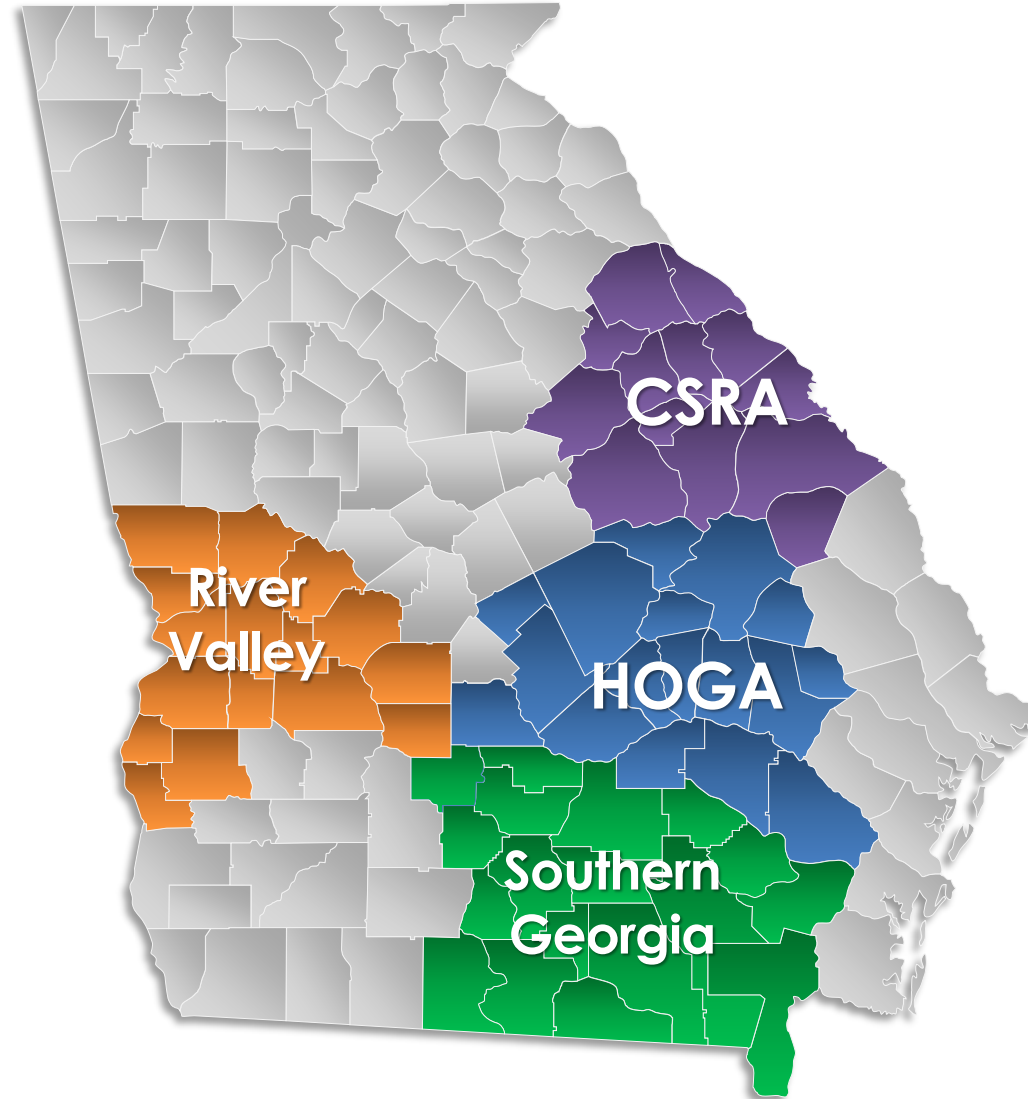


# Transportation Investment Act Annual Update

Kenneth Franks  
State TIA Administrator  
February 18, 2021



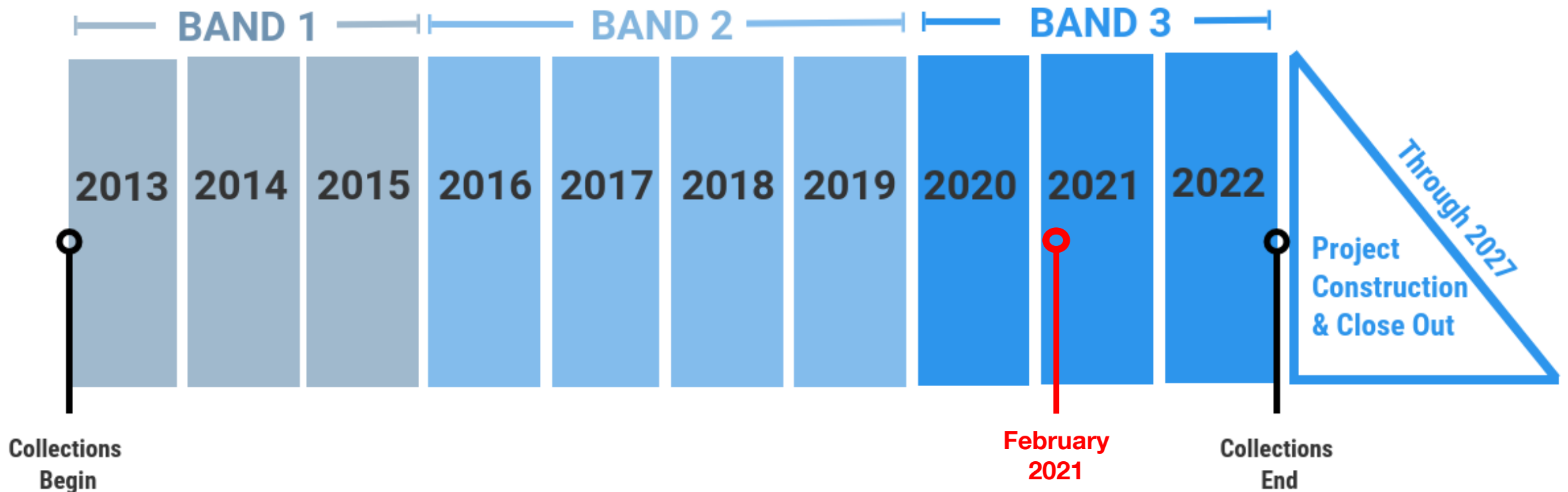
## TIA Regions



## TIA Collections thru December 2020

Region	Total	Approved Investment List (75%)	Local Discretionary (25%)
<b>CSRA</b>	<b>\$556,226,628*</b>	<b>\$417,169,971*</b>	<b>\$139,056,657*</b>
<b>River Valley</b>	<b>\$384,700,034*</b>	<b>\$288,525,026*</b>	<b>\$96,175,009*</b>
<b>Heart of Georgia</b>	<b>\$248,445,061*</b>	<b>\$186,333,796*</b>	<b>\$62,111,266*</b>
<b>Southern Georgia</b>	<b>\$128,797,424*</b>	<b>\$96,598,068*</b>	<b>\$32,199,356*</b>
<b>Totals</b> (*rounded amounts)	<b>\$1,318,169,147</b>	<b>\$988,626,861</b>	<b>\$329,542,288</b>

# TIA Timeline





## First 8 Years of TIA

820 Projects Advanced to Construction  
192/306 Band 3 Projects



# TIA 2020 Highlights

**187**

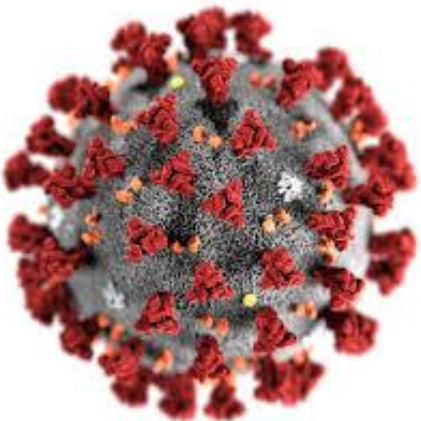
TIA Projects Let to Construction in 2020

**116**

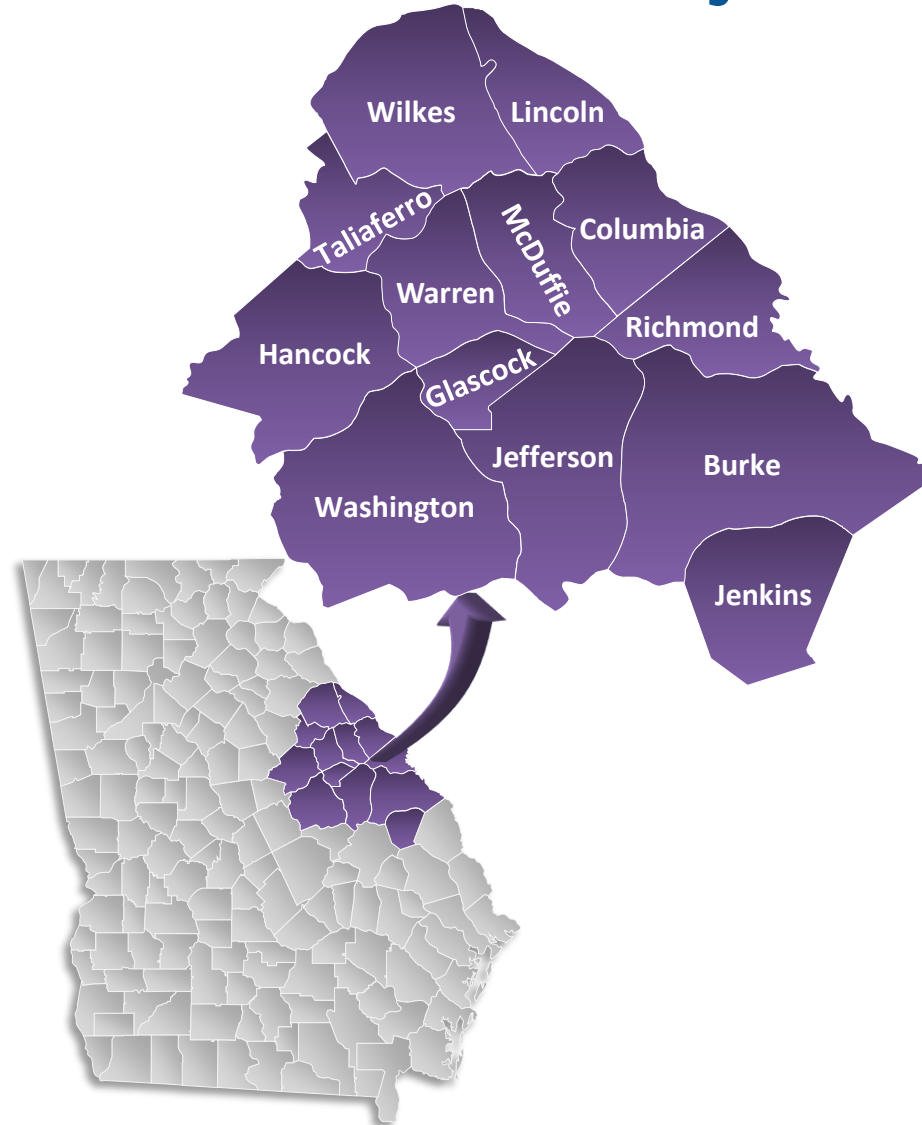
TIA Projects Completed 2020

**\$134,492,448**

TIA Program Expenditures in 2020



## CSRA Project Overview



**84**

Total Projects

**\$546,514,666**

Final Investment List  
Project Total

**18**

In Construction

**52**

Projects Completed

**\$254,878,848**

Total Expenditure to Date  
(as of 02.10.2021)



## PI 222250- SR 17 Widening McDuffie County

**Before**



**After**



## PI 0011373 – Columbia County

- I-20/SR 47 Bridge Replacement and Intersection Improvement
- GDOT Let in June 2020
- Completion date is July 2022
- Project is 31% complete



# River Valley Project Overview



**23**

Total Projects

**\$410,754,730**

Final Investment List  
Project Total

**8**

In Construction

**12**

Projects Completed

**\$189,957,669**

Total Expenditure to Date  
(as of 2.10.2021)



## PI 0007042 - SR 128 @ Whitewater Creek Bridge Macon County

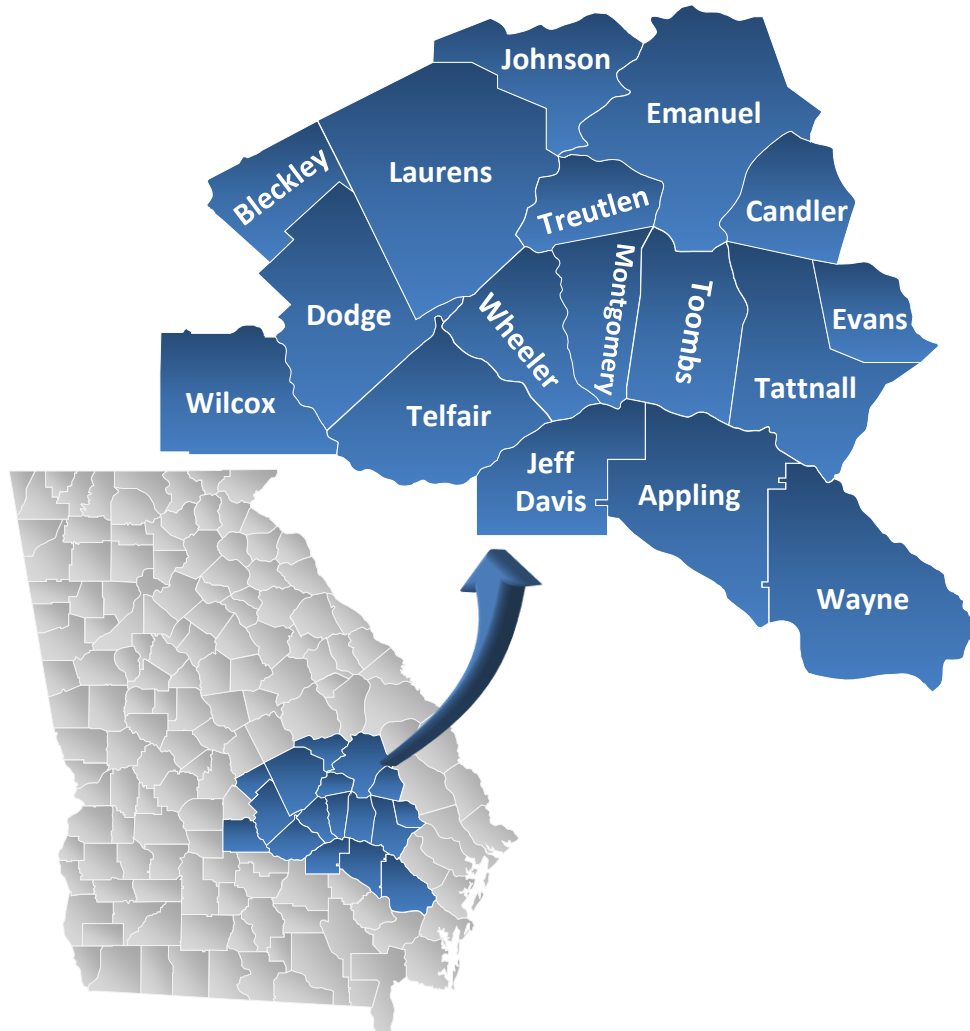




## PI 0011429 - US 27 Northbound Passing Lane Harris County



## HOGA Project Overview



**764**

Total Projects

**\$366,631,175**

Final Investment List  
Project Total

**81**

In Construction

**582**

Projects Completed

**\$132,415,714**

Total Expenditure to Date  
(as of 02-10-21)



## PI 0007413 - Hillcrest Parkway Widening - City of Dublin





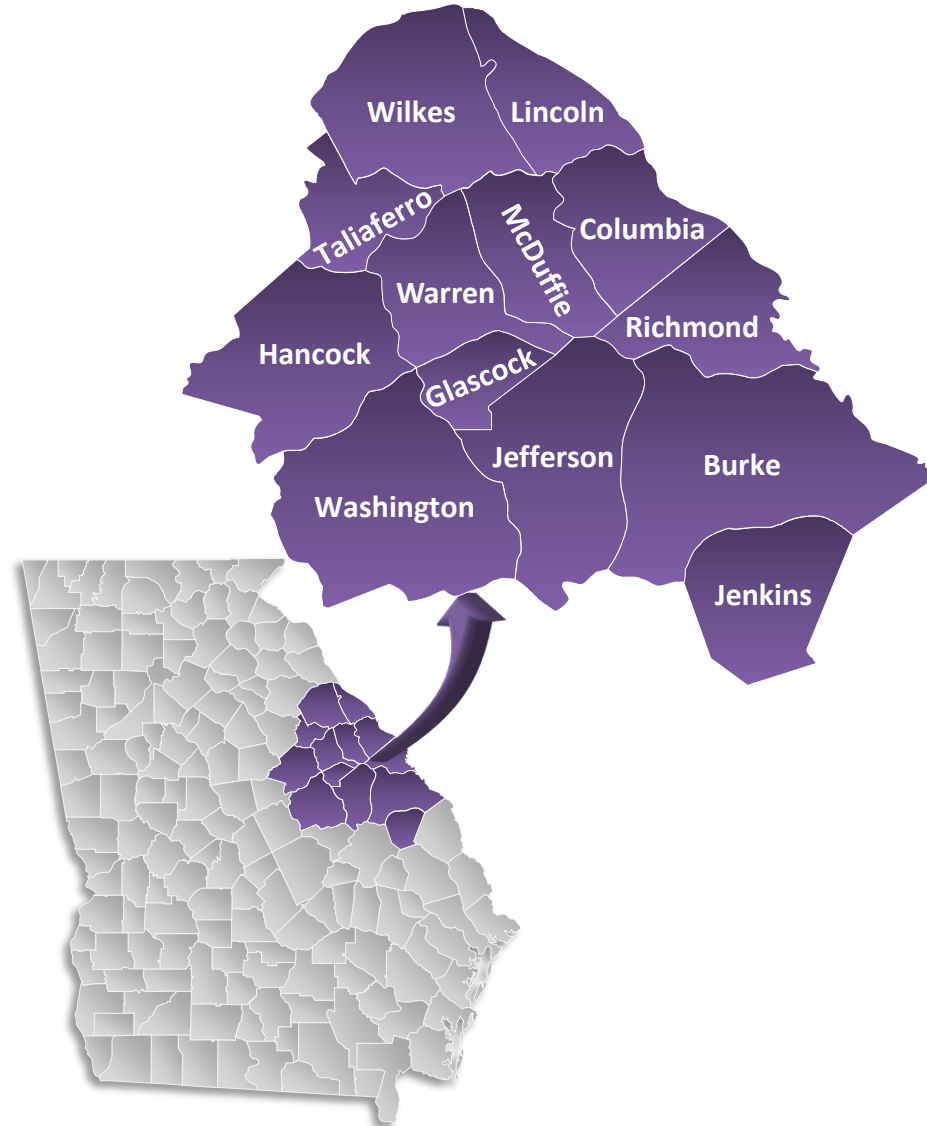
**PI 0011910 – Jim Ross Rd – Dodge County**



**PI 0011908 - Roddy Hwy - Dodge County**



## CSRA TIA 2 2023-2032



**\$ 923,161,980**

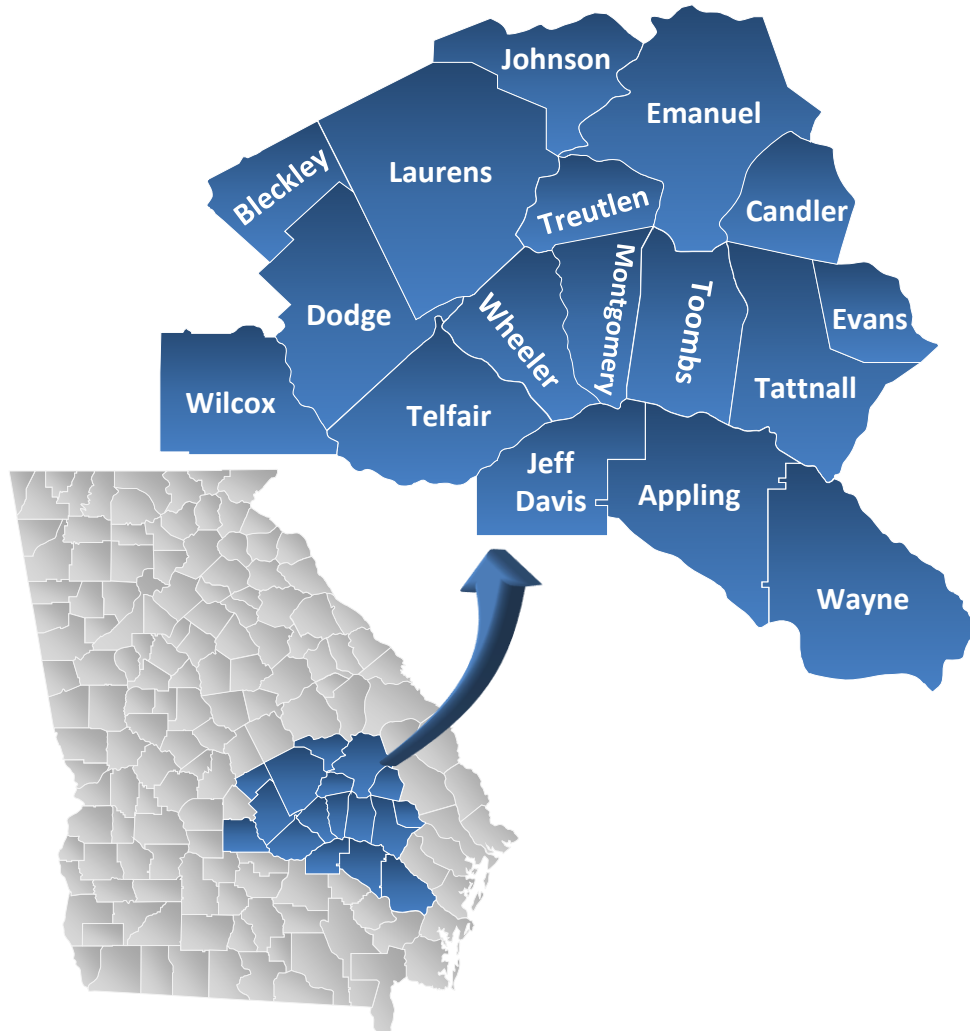
10 year forecast

**162**

Projects



## HOGA TIA 2 2023-2032



**\$392,064,180**  
10 year forecast

**580**  
Projects on the list

**2021\***  
Potential Ballot

\*if regionwide election date is available

## Questions?





- ☐ New Business
- ☐ Adjourn







# State Transportation Board Meeting

February 18, 2020