



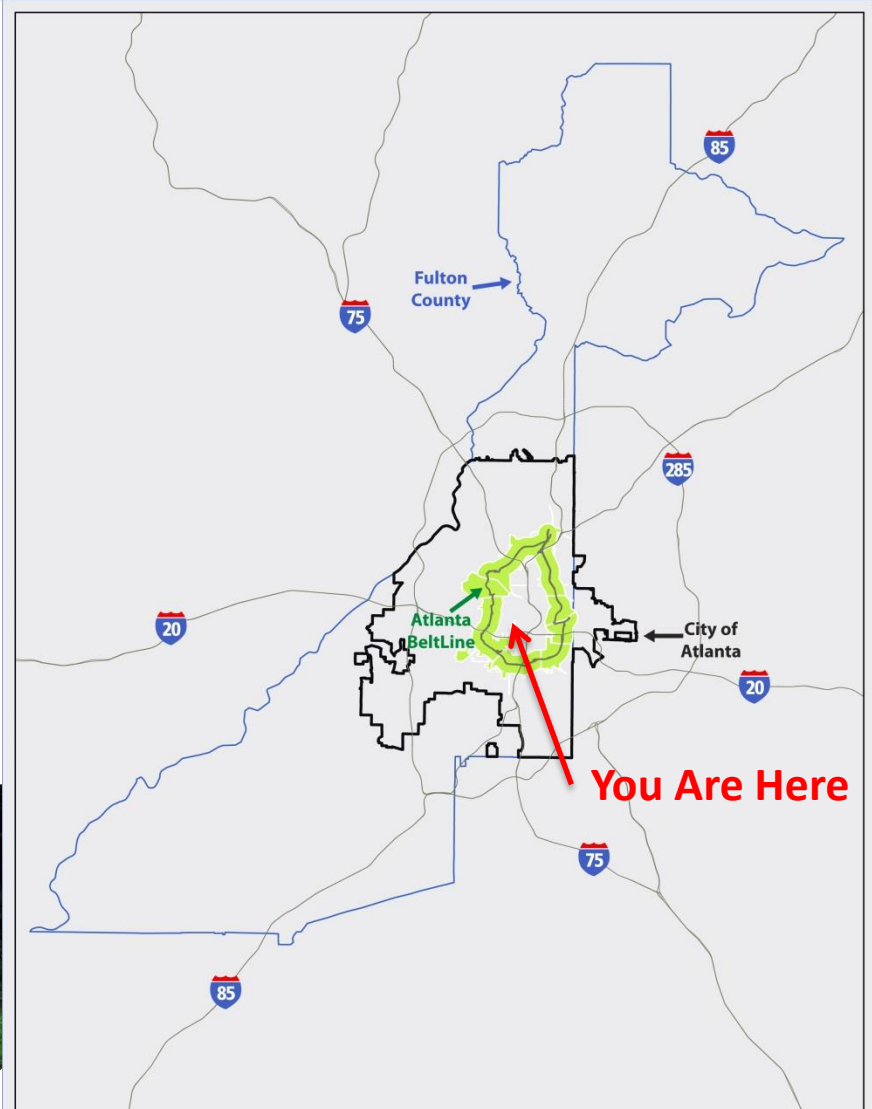
Atlanta BeltLine Update

August 19, 2015 // GDOT

// Where is the Atlanta BeltLine?



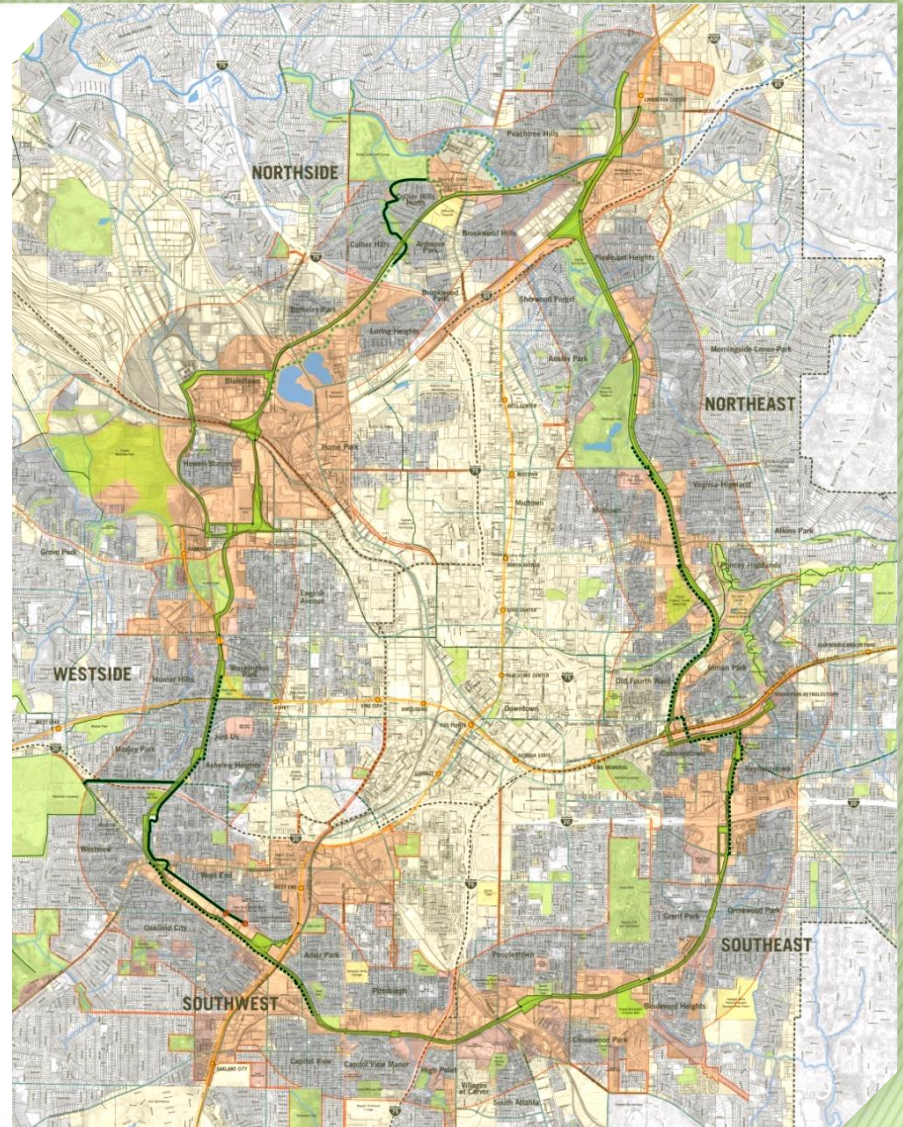
- In the heart of the Atlanta region
- Connects many of Atlanta's cultural landmarks and institutional destinations
- Connects four historic abandoned freight rail rights of way encircling the center of town



// What is the Atlanta BeltLine?



- Unites 45 neighborhoods
- 22% of the City of Atlanta population lives in the Planning Area
- 19% of the City's land mass is inside the mile-wide 15,000 acre planning area
- 6,500 acre TAD



// The Atlanta BeltLine: Key Elements



1,300 ACRES
of New
Greenspace
(+700 ADDITIONAL
ACRES REBUILT)



22 MILES
of Transit &
Transportation
Infrastructure



33 MILES
of Urban Trails



46 MILES
Streetscapes &
Complete Streets



5,600 UNITS
of Affordable
Workforce
Housing
(AS PART OF 28,000
TOTAL UNITS)



**30,000 JOBS &
\$10-20B**
Economic
Development

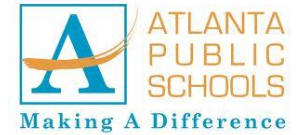


Corridor-wide
Historic
Preservation,
Public Art and
Arboretum



> 1,100 ACRES
of Environmental
Clean-up

// How we have partnered



// Overall Progress to Date



Legend

- ATLANTA BELTLINE RAIL
- ATLANTA BELTLINE TRAIL
- MARTA
- INTERSTATE
- PATH TRAILS
- PARKS (EXISTING)
- PARKS (PLANNED)
- LANDMARKS

Completed Projects

- TRAILS
- PARKS
- AFFORDABLE HOUSING
- BROWNFIELD REMEDIATION
- PUBLIC ART

Total investment to date: \$400 million


// Economic Impacts – Development Activity to Date



Private investment is following public investment:

- **Over 110 projects** complete or underway within Planning Area* valued at over **\$2.4 billion**
 - **13,369** new residential units completed
 - **1,960,000 SF** of new commercial space completed
- **Roughly 6:1 ROI to date**

Development Activity

- FINISHED 
- IN PROGRESS 
- UNDER CONSTRUCTION 

***Projects larger than 10 dwelling units and/or 10,000 square feet**

// Overall Progress to Date



Performance Dashboard

2014

Status

2030 Benchmark (Target: 25-year/20-year reset) time elapsed

36% / 20%

Total Investment

(Target: \$2.8 to 4.8 billion by the Atlanta BeltLine)

\$400 million



Transit Corridor Control (Target: 22 miles)

11.5 miles / 56%



Trail Corridor Control (Target: 33 miles)

26.5 miles / 73%



Park Land Control (Target: 1,300 acres)

562 acres / 44%



Brownfield Remediation (Target: 1,100 acres)

272 acres / 25%



Transit Projects (Target: 22 miles) *Designed/Delivered*

0 miles / 20% / 0%



Trail Projects (Target: 33 miles) *Designed/Delivered*

6.75 miles / 36% / 18%



Park Projects (Target: 1,300 acres) *Designed/Delivered*

202 acres / 16% / 16%



Streetscape Projects (Target: 46 miles) *Designed/Delivered*

2.3 miles / 9% / 5%



Permanent Jobs (Target: 30,000)

4,617 / 15%*



Construction Jobs (Target: 48,000)

22,100 / 46%



Economic Development (Target: \$10 billion w/ ROI of 3.5 to 1)

\$2.46 billion (6 to 1) / 24.6%



Housing Development (Target 28,000)

13,300 / 48%



ABI/IA Supported Affordable Housing (Target 5,600 - 20%)

985 / 18%



* Updated jobs numbers are through 2011. Source: Georgia Dept. of Labor

= On Schedule

= Near Schedule

= Behind Schedule

// ROI - Eastside Trail



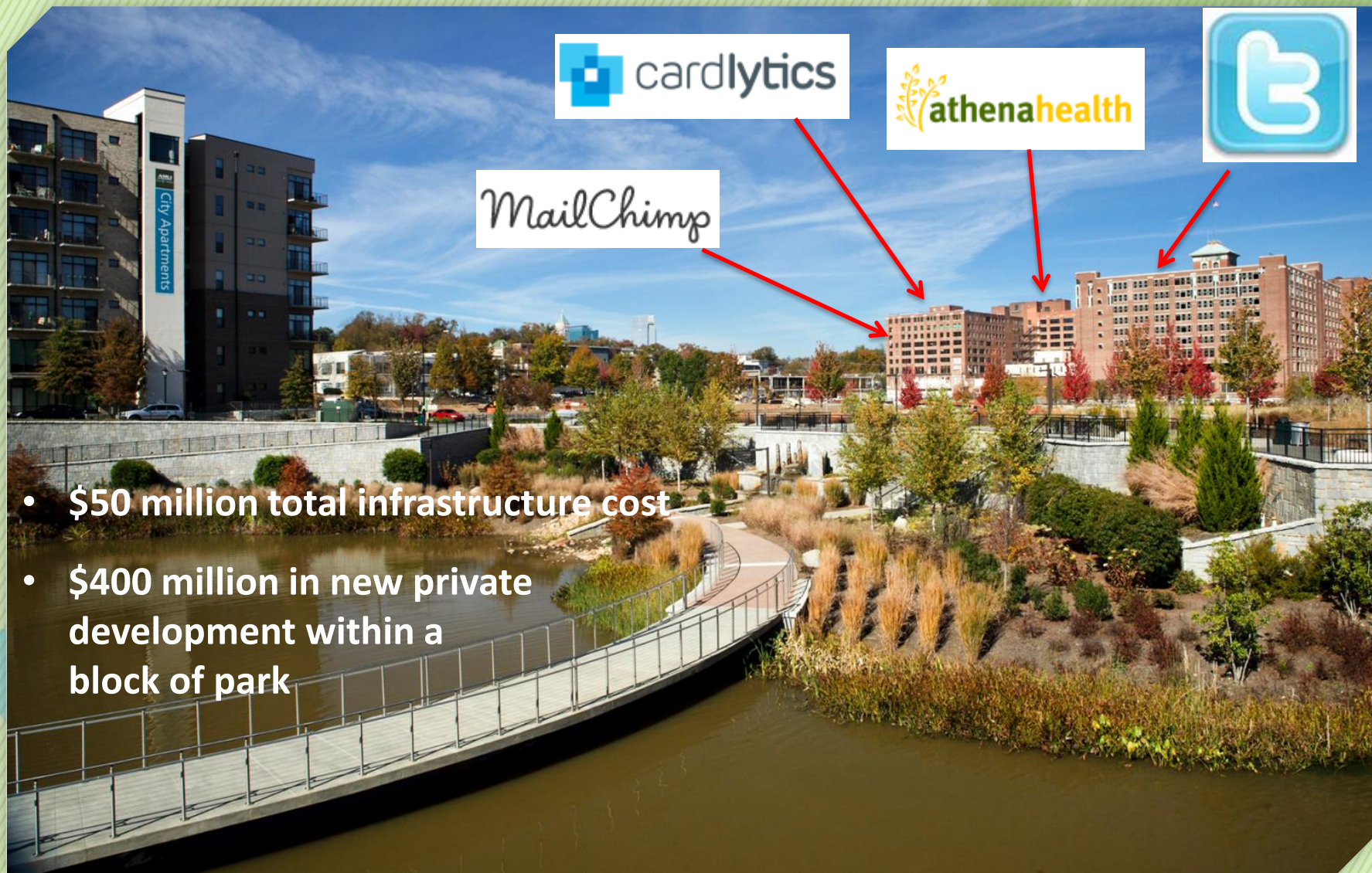
- **\$13 million** post-purchase project cost (design + construction) with \$5 million contribution from private donors
- **Over \$860 million** in new private development within half a mile of this segment of the Atlanta BeltLine



// Historic Fourth Ward Park: Before



// Historic Fourth Ward Park – After



- \$50 million total infrastructure cost
- \$400 million in new private development within a block of park

// Historic Fourth Ward Park – After



61 Workforce housing units,
Mixed-income

52 Workforce housing units,
Trust fund investment

Less than 80% of AMI
Below market-rate loans

// Trails: Westside Trail

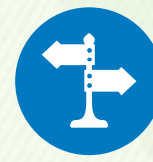


Atlanta
BeltLine

- Westside Trail construction is fully funded and underway
- 3-mile trail will connect 4 schools and 4 parks
- 14 access points
- Vertical connections
- Preparation for future transit
- Construction expected to take 2 years – 2017
- GDOT-supported project

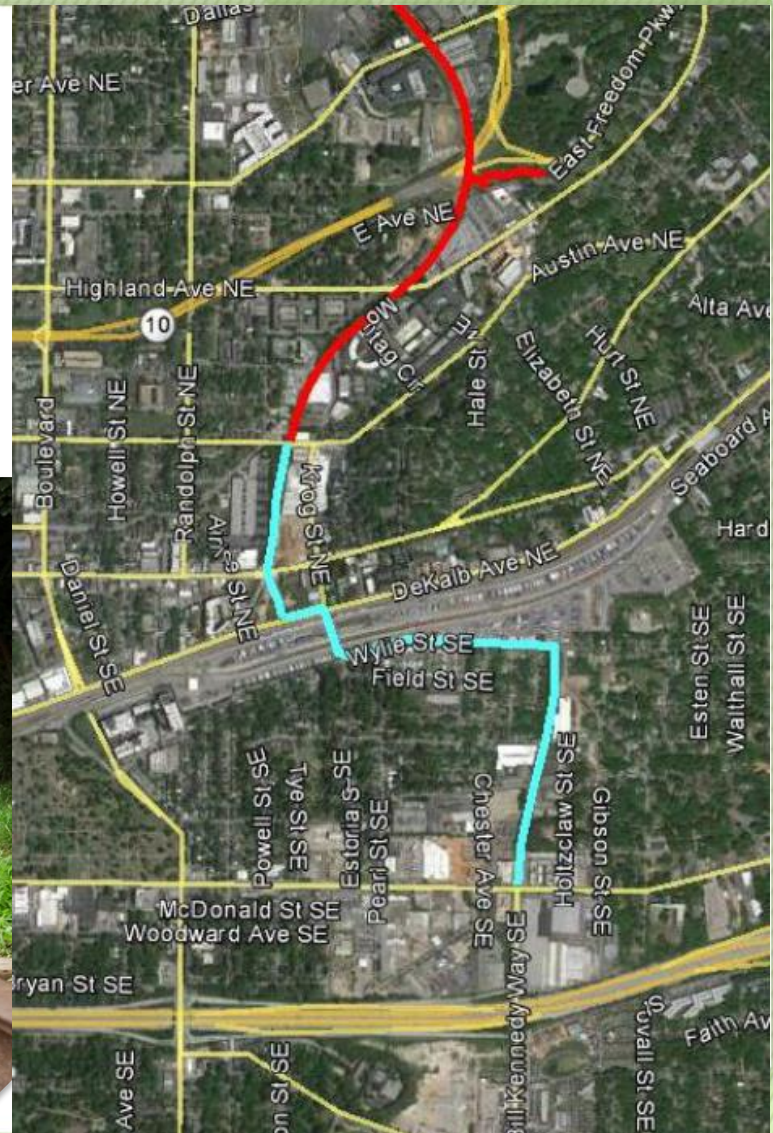


// Trails: Eastside Trail Extension



Atlanta
BeltLine

- Invitation to Bid has been released
- Bids due October 13
- Contractor required to complete project in 18 months



// Ponce de Leon Streetscape

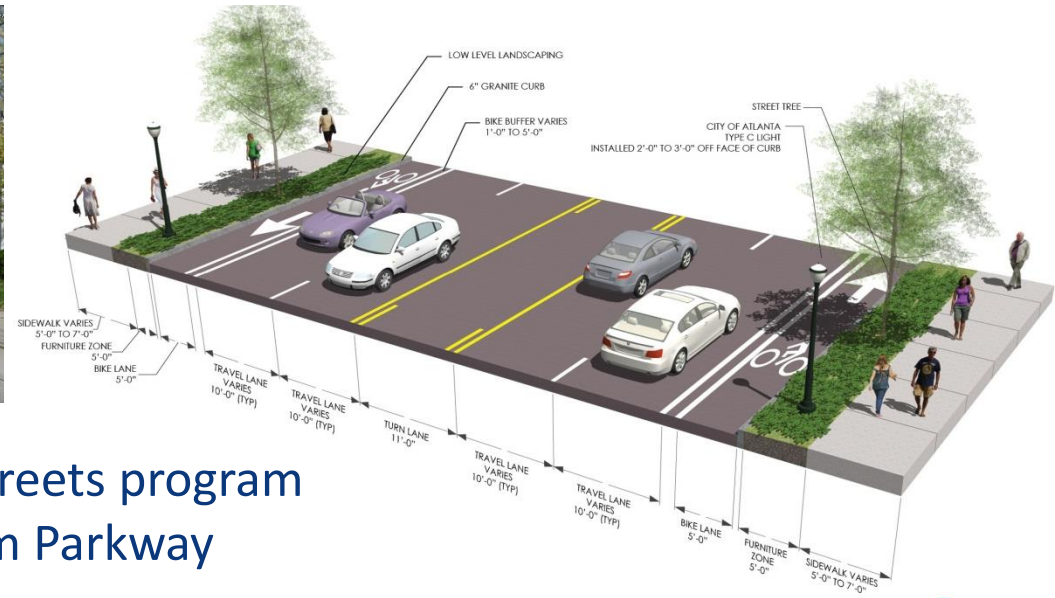


Atlanta
BeltLine

Spring 2013



2017:



- Part of 46 mile complete streets program
- From Boulevard to Freedom Parkway
- Design and ROW: 18 months
- Construction Start: Winter 2017
- Joint venture with GDOT and Ponce City Market

// North Avenue Plaza



Atlanta
BeltLine

- Construction to be completed 2015
- Joint venture with Jamestown Properties
- Coordination with GDOT





- Ground-breaking spring 2015 on Phase 1, the skatepark
- Funding provided by The Coca-Cola Company
- Second official skatepark in City of Atlanta – both on Atlanta BeltLine
- Construction completed later this year





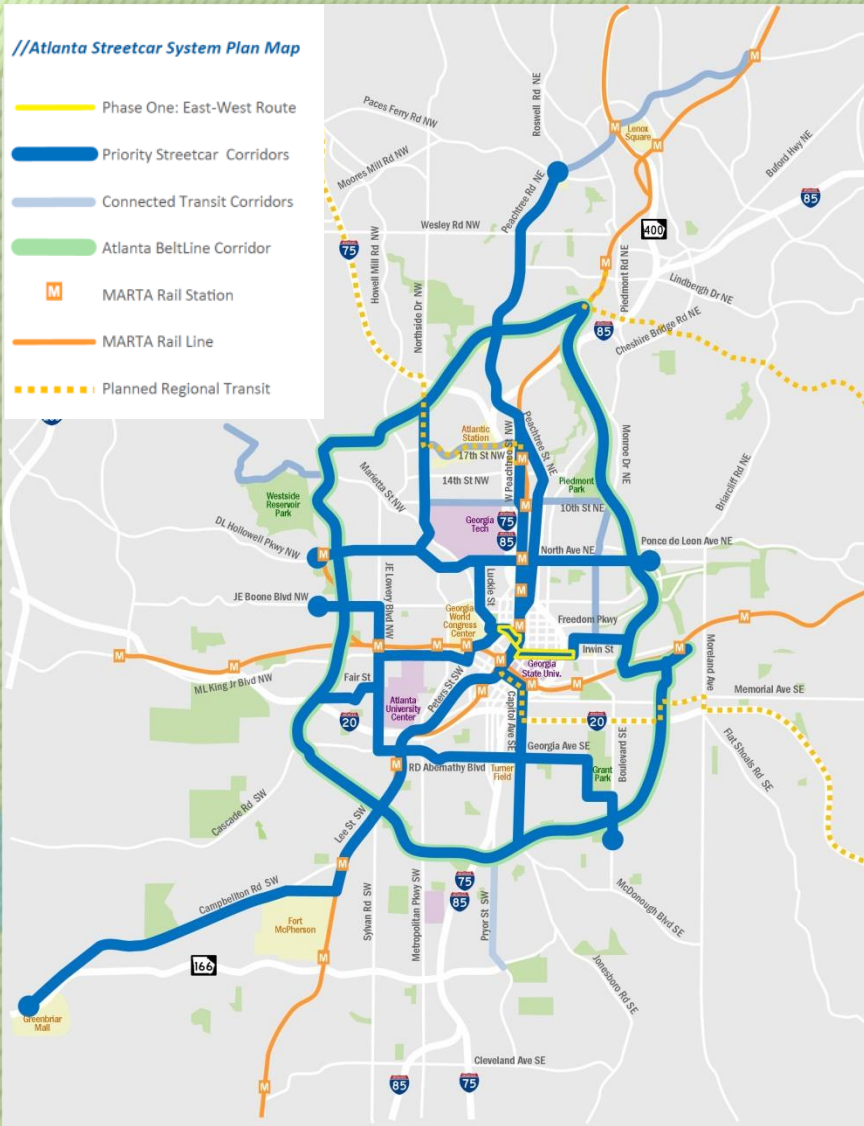
- Atlanta Streetcar
 - Refining Atlanta Streetcar System Plan
- Advancing Environmental Assessment
 - 16 miles of extensions
 - East, Crosstown, West
- Other Transportation Projects
 - North Avenue Plaza
 - Ponce de Leon Avenue Streetscape



// Refined Streetcar System Plan



Atlanta
BeltLine

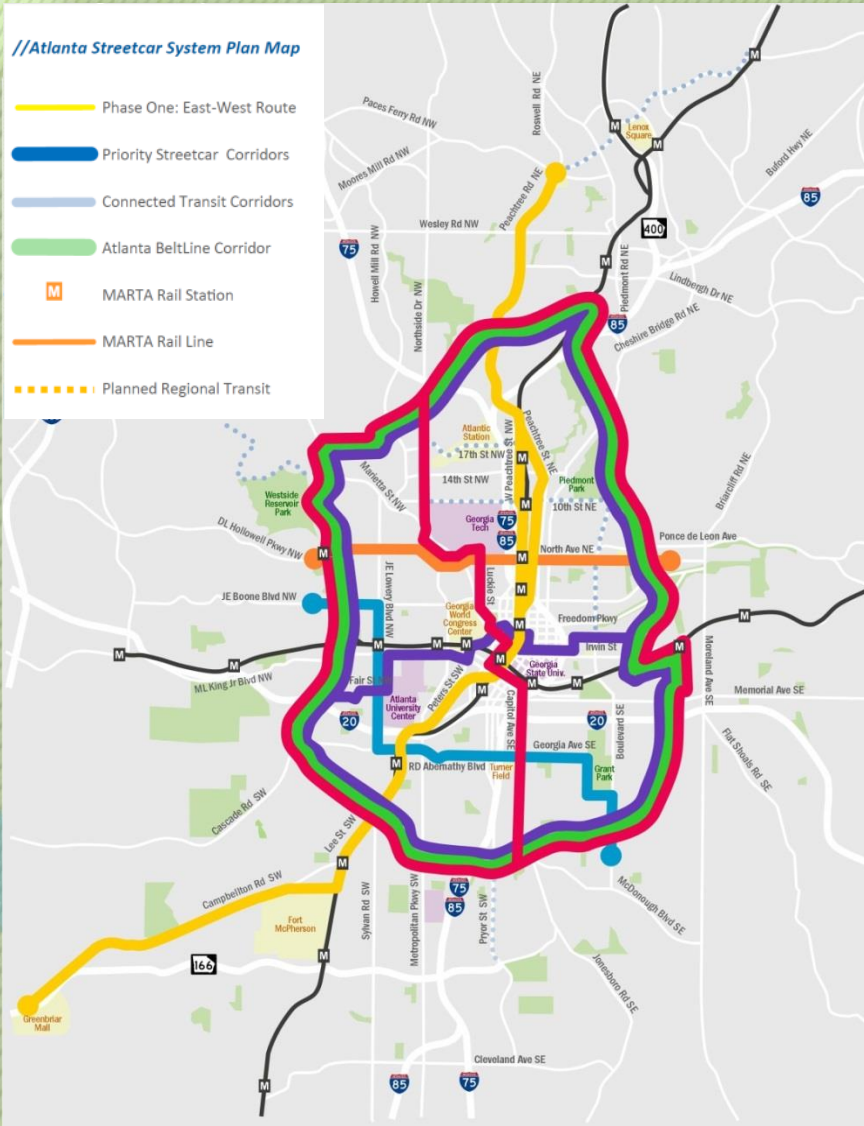


- Priority Streetcar Network
 - 50 miles of streetcar routes
 - Establishes criteria for advancing corridors
- Connected Transit Network
 - 18 miles of new/enhanced transit service interfacing with streetcar system
 - Includes circulators and shuttle service
 - Provides direct access to the streetcar system

// Refined Streetcar System Plan



Atlanta
BeltLine



• Priority Streetcar Network

- 50 miles of streetcar routes
- Establishes criteria for advancing corridors

• Connected Transit Network

- 18 miles of new/enhanced transit service interfacing with streetcar system
- Includes circulators and shuttle service
- Provides direct access to the streetcar system



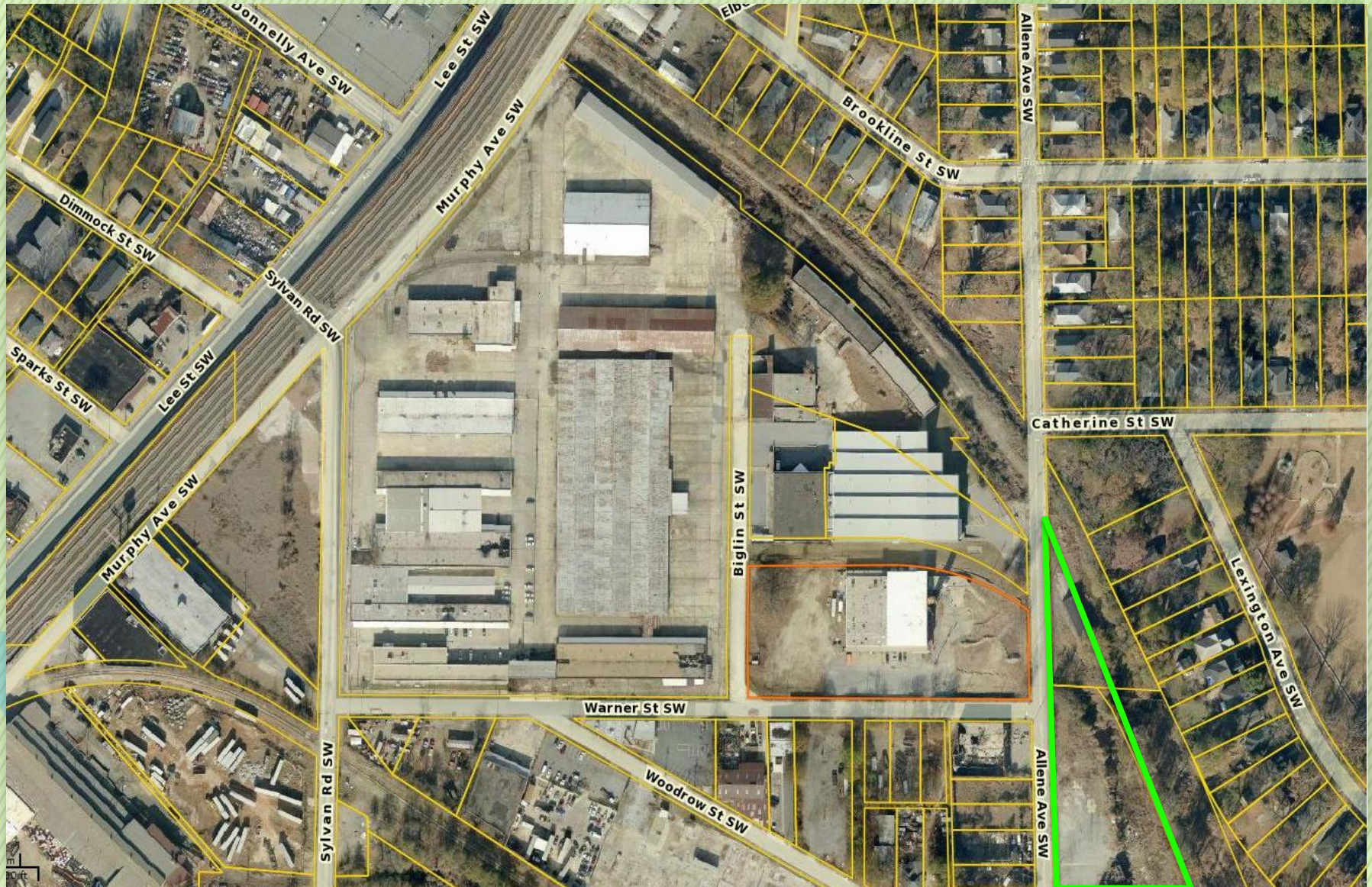
- Farmers have been selected to manage the urban farm site adjacent to the Westside Trail
- Some planting will begin this spring
- Plans are in place for the well to have a water pump
- This site will serve as a pilot for other urban agriculture sites around the Atlanta BeltLine



- \$2.4 billion in new private investment in the planning area since 2006
- 1,960,000 million of new commercial square footage
- ~ \$868 million in TAD development
- ~ \$760 million in Eastside Trail residential development
- Early stages of planning for activation of Murphy Ave site



// Economic Development- State Farmer's Market/Murphy Crossing



- Design Review Committee:
- Architects:
 - David M. Hamilton, AIA
 - Jeffery Robinson, AIA
- Planners:
 - Julie McQueen Price, AICP
 - Johanna McCrehan (TADAC appointee)
- ABI staff:
 - Design Director
 - Program Director
 - Community Planning and Engagement Director
- City staff:
 - Director of Office of Planning and Community Development



// Art on the Atlanta BeltLine



Atlanta
BeltLine

- Largest outdoor, temporary public art display in the south
- Features hundreds of artists including muralists, sculptors, painters, mosaic artists, performers and musicians
- Since inception in 2010, project has grown more than 40%
- Kicks off September 12 with Lantern Parade: 23,000 participants in 2014



// What's Next in FY '16?

- Closed CSX Wylie and University connection lines
- Advance Southside Trail design (Glenwood Avenue to Murphy Avenue)
- Advance Northeast Trail design (Monroe Drive to Armour-Ottley)
- Preliminary work to connect downtown Atlanta Streetcar to Atlanta BeltLine West
- Continued work on Westside Trail, North Avenue Plaza, & Ponce Streetscapes

